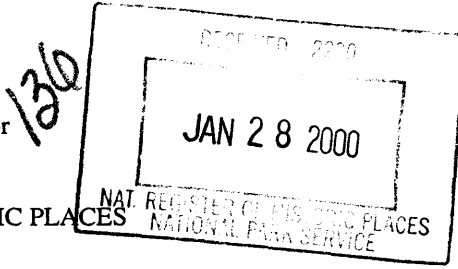


United States Department of the Interior
National Park Service

NATIONAL REGISTER OF HISTORIC PLACES
REGISTRATION FORM



RECEIVED OMB No. 1010-0018

AUG 14 1998

Ala. Historical Commission

1. Name of Property

Historic Name: McClellan, Doit W., Lustron House

Other Names/Site Number: McClellan, Doit W., Lustron House

2. Location

Street & Number: 116 W. Pearl Street Not for Publication: N/A

City or Town: Jackson Vicinity: N/A

State: Alabama Code: AL County: Clarke Code: 025

Zip Code: 36545

3. State/Federal Agency Certification

As the designated authority under the National Historic Preservation Act of 1986, as amended, I hereby certify that this nomination request for determination of eligibility meets the documentation standards for registering properties in the National Register of Historic Places and meets the procedural and professional requirements set forth in 36 CFR Part 60. In my opinion, the property meets does not meet the National Register Criteria. I recommend that this property be considered significant nationally statewide locally. (See continuation sheet for additional comments.)

[Signature] Alabama Historical Commission
Signature of certifying official (State Historic Preservation Office) 1/20/00
State or Federal agency and bureau Date

In my opinion, the property meets does not meet the National Register criteria. (See continuation sheet for additional comments.)

Signature of commenting or other official State or Federal agency and bureau Date

4. National Park Service Certification

I, hereby certify that this property is:

- entered in the National Register
 See continuation sheet.
- determined eligible for the National Register
 See continuation sheet.
- determined not eligible for the National Register
- removed from the National Register
- other (explain:)

[Signature] 2/24/00
Signature of Keeper Date of Action

5. Classification

Ownership of Property (Check as many boxes as apply)

- private
 public-local
 public-State
 public-Federal

Category of Property (Check only one box)

- building(s)
 district
 site
 structure
 object

Number of Resources within Property

Contributing	Noncontributing	
<u>1</u>	<u>0</u>	buildings
<u>0</u>	<u>0</u>	sites
<u>0</u>	<u>1</u>	structures
<u>0</u>	<u>0</u>	objects
<u>1</u>	<u>1</u>	Total

Number of contributing resources previously listed in the National Register N/A

Name of related multiple property listing (Enter "N/A" if property is not part of a multiple property listing.):

Lustron Houses In Alabama

6. Function or Use

Historic Functions (Enter categories from instructions)

Category:
DOMESTIC

Subcategory:
Single Dwelling

Current Functions (Enter categories from instructions)

Category:
DOMESTIC

Subcategory:
Single Dwelling

7. Description

Architectural Classification (Enter categories from instructions)

Other: Lustron House

Materials (Enter categories from instructions)

foundation	<u>Concrete</u>
roof	<u>Metal: Steel</u>
walls	<u>Metal: Steel</u>
other	<u>Metal: Steel, Glass</u>

Narrative Description (Describe the historic and current condition of the property on one or more continuation sheets.)

(See Continuation Sheet Section 7 Page 1)

8. Statement of Significance

Applicable National Register Criteria (Mark "x" in one or more boxes for the criteria qualifying the property for National Register listing)

- A Property is associated with events that have made a significant contribution to the broad patterns of our history.
- B Property is associated with the lives of persons significant in our past.
- C Property embodies the distinctive characteristics of a type, period, or method of construction or represents the work of a master, or possesses high artistic values, or represents a significant and distinguishable entity whose components lack individual distinction.
- D Property has yielded, or is likely to yield information important in prehistory or history.

Criteria Considerations (Mark "X" in all the boxes that apply.) N/A

- A owned by a religious institution or used for religious purposes.
- B removed from its original location.
- C a birthplace or a grave.
- D a cemetery.
- E a reconstructed building, object, or structure.
- F a commemorative property.
- G less than 50 years of age or achieved significance within the past 50 years.

Areas of Significance (Enter categories from instructions)

Architecture
Engineering

Period of Significance

1949

Significant Dates

1949

Significant Person (Complete if Criterion B is marked above): N/A

Cultural Affiliation: N/A

Architect/Builder:

Koch, Carl and Associates (Architect)

Lustron Corporation (Builder)

Narrative Statement of Significance (Explain the significance of the property on one or more continuation sheets.)

(See Continuation Sheet Section 8 Page 3)

Doit W. McClellan Lustron House
Name of Property

Clarke County, Alabama
County and State

9. Major Bibliographical References

(Cite the books, articles, and other sources used in preparing this form on one or more continuation sheets.)

Previous documentation on file (NPS) N/A

- preliminary determination of individual listing (36 CFR 67) has been requested.
 previously listed in the National Register
 previously determined eligible by the National Register
 designated a National Historic Landmark
 recorded by Historic American Buildings Survey # _____
 recorded by Historic American Engineering Record # _____

Primary Location of Additional Data

- State Historic Preservation Office
 Other State agency
 Federal agency
 Local government
 University
 Other

Name of repository: _____

10. Geographical Data

Acreage of Property: less than one acre

UTM References (Place additional UTM references on a continuation sheet)

	Zone Easting	Northing	Zone Easting	Northing
1	<u>164149303</u>	<u>487000</u>	3	_____
2	_____	_____	4	_____

_____ See continuation sheet.

Verbal Boundary Description (Describe the boundaries of the property on a continuation sheet.)

Boundary Justification (Explain why the boundaries were selected on a continuation sheet.)

11. Form Prepared By

Name/Title: Gene A. Ford, Architectural Historian; Susan Enzweiler, AHC Historian; Trina Binkley, AHC Reviewer

Organization: The University of Alabama, Office of Archaeological Services Date: September 9, 1997

Street & Number: 13075 Moundville Archaeological Park Telephone: (205) 348-7774

City or Town: Moundville State: Alabama Zip Code: 35474

Doit W. McClellan Lustron House
Name of Property

Clarke County, Alabama
County and State

Additional Documentation

Submit the following items with the completed form:

Continuation Sheets

Maps

- A USGS map (7.5 or 15 minute series) indicating the property's location.
- A sketch map for historic districts and properties having large acreage or numerous resources.

Photographs

Representative black and white photographs of the property.

Additional items (Check with the SHPO or FPO for any additional items)

Property Owner

(Complete this item at the request of the SHPO or FPO.)

Name: Jewel Hinton

Street & Number: P.R. 4 Box 222 Telephone: (205) 752-5763

City or Town: Thomasville State: Alabama Zip Code: 36784

United States Department of the Interior
National Park Service

NATIONAL REGISTER OF HISTORIC PLACES
CONTINUATION SHEET

Section 7 Page 1

Doit W. McClellan Lustron House
Name of Property

Clarke County, Alabama
County and State

The Doit W. McClellan Lustron House, located in Jackson, Clarke County, Alabama, is a one story, metal, prefabricated house. Built in 1949, the Doit W. McClellan House features a metal side gable roof. Exterior siding consists of 2 ft. square porcelain enamelized metal panels. Two aluminum frame windows, which coincide with a bedroom and the living room, respectively, punctuate the front facade of the house. A portion of the front facade and adjoining side wall are inset forming a porch with an engaged roof. A single metal post supports the roof on the porch. There is a downspout attached to the porch support. A metal and glass panel door and an aluminum frame window pierce the west side of the all metal house. Fenestration on the rear facade includes three aluminum frame windows and a metal and glass panel door. A wood frame, screened porch extends across the entire width of the rear elevation of the house. Attached to the east side of the porch is a wood frame, shed addition. Four aluminum frame windows punctuate the east side of the prefabricated home. A carport is attached to the east elevation of the house. The home rests on a concrete foundation. Inside, the Lustron features metal wall and ceiling panels and built in cabinets, shelves, and a vanity. The Doit W. McClellan Lustron House, a fine example of the two bedroom Westchester model (one of nine in Alabama), retains a high degree of integrity and is in excellent condition.

The Doit W. McClellan Lustron House is situated on a 54 ft x 120 ft lot in a neighborhood that features bungalows, Victorians, and a number of post WWII cottages. The Westchester model measures 31 ft x 35 ft and resembles the quintessential ranch house with its low profile, side gable roof, and sleek rectangular configuration. A scattering of foliage embellishes the associated yard.

A side gable roof of metal panels crowns the Lustron House. The panels are fashioned to imitate the look of ceramic tiles. Painted brown, the porcelain enamelized metal panels are bolted to metal roof trusses. Vertical metal panels cover the gable ends. Attached to the roof and extending along the entire front facade is a metal gutter. A downspout conducts rain water from the gutter to the ground below.

The exterior skin of the Doit W. McClellan Lustron House consists of porcelain enamelized panels. Painted yellow, the panels measure 2 ft square. The yellow finish of the exterior is factory produced and represents one of the seven basic stock colors of the Lustron palette. The exterior of the prefabricated abode does not show any signs of rust, fading, or other deleterious effects from the elements.

Two windows constitute the fenestration of the front facade. Measuring 6 ft x 8 ft, these windows feature a large, fixed, central, plate glass window flanked on either side by a four-light casement window. The frames are constructed of aluminum. The west most of the two slightly projects beyond the wall much like a bay window.

The southwest corner of the Doit W. McClellan House is recessed, creating a 12 ft x 5 ft inset porch. Supporting the end of the engaged roof over the porch is a metal post to which the factory issue downspout is attached. A metal and glass panel door is located at the northeast corner of the porch; the door leads to the living room.

A window opening is cut into the west wall of the prefabricated house. It is fitted with a window similar in design to those of the front facade. The window coincides with the dining room.

United States Department of the Interior
National Park Service

NATIONAL REGISTER OF HISTORIC PLACES
CONTINUATION SHEET

Section 7 Page 2

Doit W. McClellan Lustron House
Name of Property

Clarke County, Alabama
County and State

Fenestration on the rear facade of the Lustron House consists of four openings. The kitchen window opening measures 4 ft square and is fitted with a six light casement window. A doorway is fitted with a metal and glass panel door similar in design to that of the front door. The door leads to the utility room and kitchen. A 4 ft x 2 ft, three light casement serves as the bathroom window. The bedroom window is like those of the front facade. Extending across this side of the house is wood frame, screened porch. The porch features a standing seam metal roof. A concrete slab serves as the floor of the structure. While decidedly not a stock Lustron item, the porch does not detract from the character of the historic prefab. Its massing, scale, and design harmonize with its parent edifice. The porch was built circa 1965.

A circa 1965 wood frame addition is attached to the east side of the porch. It features a shed roof of standing seam metal and plywood siding.

Four rectangular windows pierce the east wall of the Lustron House. Constructed of a single light, these windows resemble those of the south wall of the E. L. Newman Lustron House in Sheffield, Alabama and north wall of the J. P. McKee Lustron House in Jackson, Alabama, suggesting that they are an alternate Lustron window design.

The interior of the Lustron House appears much as it did when it was erected in 1949. The ceiling and wall panels have not been covered or replaced with sheetrock, wood paneling, or other nonoriginal material. Emitting from the porcelain enamelled panels is a lustrous sheen that glows as much as the day the panels were removed from the Lustron Corporation plant ovens in Columbus, Ohio. Throughout the interior, there is indoor/outdoor, mohair, or tight and short napped carpet. While the carpet is not a Lustron stock material, it is a minor concession with respects to the original look of the all metal house.

Intact in the interior of the house is an array of built-in creature comforts. The living room features a built-in book shelf and a complimentary cabinet. The wall divider between the dining room and kitchen has space saving metal cabinets, drawers, and shelves. Metal cabinets line the walls of the kitchen. The original furnace located in the utility room was replaced with another unit. The master bedroom retains its built-in vanity and closets. Metal closets are also featured in the second bedroom.

Archaeological Component

Although no formal archaeological survey has been conducted, there is the potential for subsurface remains.

United States Department of the Interior
National Park Service

NATIONAL REGISTER OF HISTORIC PLACES
CONTINUATION SHEET

Section 8 Page 3

Doit W. McClellan Lustron House
Name of Property

Clarke County, Alabama
County and State

Significance

The Doit W. McClellan House meets the standards established by Criterion C for listing in the National Register of Historic Places and falls under the "Lustron Houses in Alabama" MPS. The Lustron House is significant in the areas of architecture and engineering for its associations with the prefabricated housing industry and nation wide housing shortage immediately following World War II. The Doit W. McClellan Lustron House rates as an outstanding example of the component part technology and all steel construction that the Lustron Corporation utilized in the manufacture of its prefabricated houses from 1946 to 1950. The prefabricated house is the sum total of a critically acclaimed engineering process that included a state of the art factory, production line, storage and distribution system, and marketing strategy. Additionally, the Lustron House embodies the distinct characteristics of post World War II architecture, such as an overall design that was at once contemporary and historic, durability, easy maintenance, and built in creature comforts. It is historically linked with McKee Construction Co., Inc., the dealer of Lustron Houses in Jackson, Alabama, which played a critical role in sales and dissemination of information. As one of only eleven extant Lustrons in the state of Alabama, the Doit W. McClellan House is part of a small yet significant group of houses that represent the development of prefabricated housing in the state. As Lustron promotional information boasted, the Doit W. McClellan House has retained a high degree of its original appearance through its history and is likely to do so for the next half century as well.

Historical Summary

The Doit W. McClellan House is one of eleven extant Lustron Houses in Alabama. The Lustron House was marketed by McKee Construction Co., Inc. in Jackson, Alabama. McKee Construction Co., Inc. owned the Lustron distribution rights for Jackson (Lustron Corporation 1950). The Doit W. McClellan Lustron House is one of two Lustrons built in Jackson.

Once the partnership of McKee Construction Co., Inc. and the Lustron Corporation was struck, an advertisement campaign began in March, 1949. The first advertisement promoting the many benefits of a prefabricated Lustron House appeared in the March 3, 1949 edition of *The Clarke County Democrat*. The ad announced the appointment of McKee Construction Co., Inc. as a new builder of Lustron Houses. It featured a photograph and floor plan of the Lustron House and promoted its many virtues. On April 14, 1949 another advertisement ran in *The Clarke County Democrat*. It announced a week long open house for a demonstration model. Actually, the open house applied to two Lustrons that the McKee Construction Co., Inc. erected in Jackson (McKee 1997). Both houses were furnished by Woodson Furniture Co. of Jackson. J. P. McKee, the head of McKee Construction Co., Inc., purchased the lots, which are diagonally adjacent each other, for both Lustrons from C. T. (Curtis) McCorquodale (McKee 1997).

J. P. McKee maintained ownership of the Lustron House on Pearl Street for one year. Doit W. McClellan acquired the house from McKee on January 16, 1950 as recorded by Deed Book 351, Page 12. According to the Alabama Property Record Card (APRC) associated with the Lustron House, the house was acquired by Jewel Hinton in 1978. Hinton actually lives in Thomasville, but stays in the Lustron when she is in Jackson on business.

United States Department of the Interior
National Park Service

NATIONAL REGISTER OF HISTORIC PLACES
CONTINUATION SHEET

Sections 9,10 Page 4

Doit W. McClellan Lustron House
Name of Property

Clarke County, Alabama
County and State

Bibliography

Alabama Property Record Card. Document maintained on file at the Clarke County Courthouse, Grove Hill, Alabama.

The Clarke County Democrat. Lustron Advertisement. March 3, 1949.
Lustron Advertisement. April 14, 1949.

Deed Book 351, Page 12. Deed Document maintained on file at the Clarke County Courthouse, Grove Hill, Alabama.

Lustron Corporation. Dealer Performance Record. Columbus. 1950.

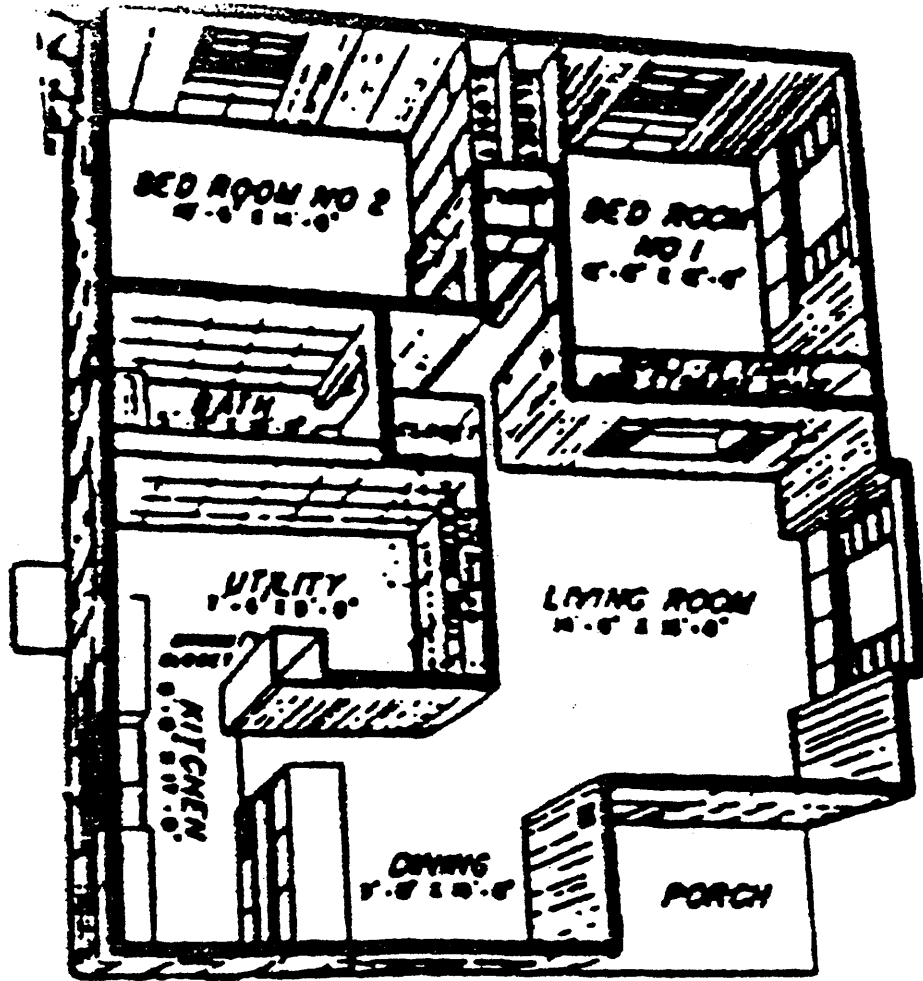
McKee, Mrs. Willie Margaret (widow of J. P. McKee, head of McKee Construction Co., Inc.). Phone Interview. 1997.

Verbal Boundary Description

The boundary of the Doit W. McClellan Lustron House is demarcated in Figure 2, which is derived from Clarke County Tax Map #42-03-05-4-002.

Boundary Justification

The delineated boundaries include the house and lot historically associated with the Lustron House located at 116 W. Pearl Street, Jackson, Alabama.



Floor plan,
Westchester two-bedroom
model.

Figure 1.
DOIT W. MCCLELLAN LUSTRON HOUSE, CLARKE COUNTY, ALABAMA

United States Department of the Interior
National Park Service

NATIONAL REGISTER OF HISTORIC PLACES
CONTINUATION SHEET

Section Photographs Page 5

Doit W. McClellan Lustron House
Name of Property

Clarke County, Alabama
County and State

Photographs

Doit W. McClellan Lustron House
Jackson, Clarke County, Alabama

Photos By: Gene A. Ford
Office of Archaeological Services
Moundville, Alabama 35474

Negatives: Alabama Historical Commission
468 South Perry Street
Montgomery, Alabama 36130-0900

Date: December 26, 1996

1. Front and East Elevations.
2. Front and West Elevations.
3. Front Elevation.
4. Rear Elevation.
5. East Elevation Detail.