

United States Department of the Interior  
National Park Service



National Register of Historic Places  
Registration Form

This form is for use in nominating or requesting determinations for individual properties and districts. See instructions in How to Complete the National Register of Historic Places Registration Form (National Register Bulletin 16A). Complete each item by marking "x" in the appropriate box or by entering the information requested. If any item does not apply to the property being documented enter "N/A" for "not applicable". For functions, architectural classification, materials, and areas of significance, enter only categories and subcategories from the instructions. Place additional entries and narrative terms on continuation sheets (NPS Form 10-900a). Use a typewriter, word processor, or computer, to complete all items.

1. Name of Property

historic name First Burial Ground

other names/site number Park Street Burial Ground

2. Location

street & number Park Street near Centre Street N/A not for publication

city or town Woburn N/A vicinity

state Massachusetts code MA county Middlesex code 017 zip code 01801

3. State/Federal Agency Certification

As the designated authority under the National Historic Preservation Act of 1986, as amended, I hereby certify that this nomination request for determination of eligibility meets the documentation standards for registering properties in the National Register of Historic Places and meets the procedural and professional requirements set forth in 36 CFR Part 60. In my opinion the property  meets  does not meet the National Register Criteria. I recommend that this property be considered significant  nationally  statewide  locally. (See continuation sheet for additional comments.)

*Betsy Friedberg, National Register Director* 9/28/04  
Signature of certifying official/Title Date  
Cara H. Metz, Executive Director  
Massachusetts Historical Commission, State Historic Preservation Officer

In my opinion the property  meets  does not meet the National Register Criteria. (See continuation sheet for additional comments.)

Signature of certifying official/Title Date

State or Federal Agency and bureau Date

4. National Park Service Certification

- I, hereby certify that this property is:  
 entered in the National Register  
 see continuation sheet
- determined eligible for the National Register  
 see continuation sheet
- determined not eligible for the National Register
- removed from the National Register
- other (explain):

*Edson D. Beall* 11.13.04  
Signature of the Keeper Date of Action

**First Burial Ground**  
Name of Property

**Middlesex County, MA**  
County and State

---

### 3. Classification

---

**Ownership of Property**

private  
 public-local  
 public-State  
 public-Federal

**Category of Property**

building(s)  
 district  
 site  
 structure  
 object

**Number of Resources within Property**

<u>Contributing</u>	<u>Non contributing</u>	
		buildings
1		sites
1	4	structures
16	3	objects
18	7	<b>Total</b>

**Name of related multiple property listing**

(enter N/A if property is not part of a multiple property listing)  
N/A

**Number of contributing resources previously listed in the National Register**

N/A

---

### 6. Function or Use

---

**Historic Functions**

(Enter categories from instructions)

Funerary: Cemetery

**Current Functions**

(Enter categories from instructions)

Funerary: Cemetery

---

### 7. Description

---

**Architectural Classification**

(Enter categories from instructions)

N/A

**Materials**

(Enter categories from instructions)

N/A

**Narrative Description**

(Describe the historic and current condition of the property on one or more continuation sheets)

See continuation sheets.

**United States Department of the Interior  
National Park Service**

**National Register of Historic Places  
Continuation Sheet**

**First Burial Ground  
Woburn, Middlesex County, MA**

Section number 7 Page 1

**7. NARRATIVE DESCRIPTION**

Woburn's First Burial Ground is a 1.4-acre site located at the corner of Park Street and Centre Street in the Woburn Square area. It is one block north of City Hall and the Common and one block west of the Main Street business district (Photo #3). The burial ground is sometimes considered part of a larger city-owned property, but both the 1873 atlas and a survey undertaken in 2000 (see attached copies) show it as a separate parcel. There are commercial properties to the east and south of the burial ground, residences to the northwest and an overgrown undeveloped city-owned parcel to the northeast, which is the site of a 19<sup>th</sup> century powder magazine and a former quarry.

Along most of the Park and Centre Street frontage there is a heavily mortared fieldstone retaining wall that varies in height from 4' to 5'. The southern section of the wall, where the former town pound was located (see 1873 atlas), is much lower and less finished with a 6' chain link fence in front of it. Chain link fencing of variable heights and styles also encloses interior sections of the burial ground, separating it from the vacant land to the northeast and from some of the adjacent businesses to the east. The rear of several Main Street buildings also forms a portion of the southeast perimeter of the burial ground.

Pedestrian access is through an unlocked chain link gate on Park Street at the southern end of the burial ground (Photo #1). The granite and concrete path at this entrance leads to a series of late 20<sup>th</sup> century steps and stepped ramps and a small circular plaza containing a flagpole and several commemorative plaques. There is no formal circulation system beyond this short path and no other access points besides those provided by breaks in the chain link fence.

The burial ground is located on a steeply sloping site that rises about 30' above Park Street to an area known as Magazine Hill. The high point is at the northern end, where the Baldwin family monument is dramatically sited (Photo #2). The landscape character of the burial ground is simple with open lawn scattered with a few mature deciduous trees, primarily maples and horsechestnuts. Most of the trees are located along Park Street in a rough row, with a few on the interior. There are no shrubs except invasive vegetation at the edges of the burial ground.

While an 1866 survey recorded about 270 gravestones, a recent inventory undertaken by a group of local residents known as the Grave Group found 203 gravestones, of which 189 have been positively identified. A small percentage of these have footstones, many located in their original position six feet from the headstone. As was typical in very early burial grounds, headstones are arranged randomly and oriented in all directions. They are also concentrated in the central portion of the burial ground, although there may be unmarked graves in other areas. The vast majority of the headstones are slate, erected between 1690 and 1794, with most displaying the

(continued)

United States Department of the Interior  
National Park Service

National Register of Historic Places  
Continuation Sheet

First Burial Ground  
Woburn, Middlesex County, MA

Section number 7 Page 2

winged death's head that was characteristic of 18<sup>th</sup> century New England. Many of the earlier stones are fairly thick, with a large number of light gray slate, some with green diagonal stripes. Almost all have a shouldered main block with rounded tympanum.

Several distinctive styles are evident within the cemetery. A number of the headstones display characteristics attributable to the Lamson family of stone carvers from Charlestown and Malden, Massachusetts who were active from the late 17<sup>th</sup> through the 18<sup>th</sup> century. Some of the earliest stones appear to be the work of Joseph Lamson (1658-1722), founder of the Lamson shop. These display the winged skull, almost always with eyebrows, which was a characteristic of Joseph Lamson's work. They also frequently feature cross bones, hour glasses, inscriptions of "memento mori" and "tempus fugit" in the panel below the tympanum, as well as abstract forms in the side panels. Another characteristic of Joseph Lamson's work was that the lettering typically is in upper case and is set in a box with decorative borders. Examples from the First Burial Ground that appear to be the work of Joseph Lamson include the headstone of Ann Convers (d. 1691) (Photo #4); Lieutenant James Thomson (d. 1693); Francis Wyman (d. 1699); Sarah Johnson (d. 1710); Abraham Fyfeild (d. 1711); Samuel Richardson (d. 1712); and John Burbeen (d. 1713).

By the Revolutionary War period, the shop consisted of several members of the Lamson family and the work of individuals is harder to distinguish. Later headstones carved by the Lamson shop display narrower side panels with simpler motifs; larger death's heads; simpler boxes enclosing the inscription and use of upper and lower case lettering. Examples of stones with Lamson characteristics from this period include Benjamin Wyman (d. 1774); Daniel Thompson (d. 1775) (Photo #5); and Dorothy Gardner (d. 1787) (Photo #6).

The 18<sup>th</sup> century epitaphs are surprisingly expressive of both social history and individual traits. Accidents and disease were frequent causes of death, with a particularly high rate of infant mortality. One broken stone set in a isolated location at the north end of the burial ground reveals that its owner (name illegible) died of smallpox. The headstone of Eleazer Flagg Pool (d. 1776) indicates that "six weeping children in eight days followed father and mother to their graves." Benjamin Brook (d. 1769) was killed by a falling tree. Deacon Samuel Wyman wrote of his wife Abigail (d. 1772) "Here lies the wife of my youth, the desire of my eyes." Judith Tyng (d. 1736, age 99) was commemorated with the words, "A woman of most Exempl'ry Vertue & Piety, Rich in Grace, Ripe for Glory."

In addition to the predominant slate headstones, there are also three 19<sup>th</sup> century marble headstones, one large sandstone (formerly a table tomb, now lying on the ground with engraving missing) and two large monuments. The most prominent monument is that of the Baldwin family, a squat granite block obelisk at the crest of the hill near the north edge of the burial ground. The inscription reads: "To the memory of Col. Loammi Baldwin, who died October 20, 1807, aet. 63. Erected by his children." It honors Loammi Baldwin (1745-1807) Continental

(continued)

**United States Department of the Interior  
National Park Service**

**National Register of Historic Places  
Continuation Sheet**

**First Burial Ground  
Woburn, Middlesex County, MA**

Section number 7 Page 3

Army officer, builder of the Middlesex Canal, and propagator of the Baldwin apple. There are 13 Baldwins buried in the tomb underneath, including Loammi Baldwin the Younger (1780-1838) the father of American civil engineering, builder of naval dry docks, canals and turnpikes, and designer of the Bunker Hill Monument. His brother, James F. Baldwin (1782-1862), builder of the Boston and Lowell Railroad and the Boston water system, is also among the family members buried here.

The other prominent monument is a marble structure located at the southeast corner of the property. It was erected by John Fowle in memory of James Fowle, Esq. (d. 1856, age 62). The Fowle monument consists of an 8' tall eight-sided tapering column topped by a marble urn and set on a marble pedestal and granite base. The inscription on the pedestal is a raised scroll-like panel and the whole is decoratively carved. The most recent stone is that of Asahel Porter, who was killed in the battle of April 19, 1775. The current stone is a replacement which was carved in 1976 as a replacement for Porter's original stone which had disappeared.

Near the entrance to the burying ground are several late 20<sup>th</sup> century commemorative features including a flagpole, and three signs. The sign nearest the entrance is a post mounted iron plaque, painted bronze, erected in 1962 in memory of Deacon Edward Converse, a founder of the City of Woburn. The second sign is also a post mounted iron plaque, painted bronze, identifying the site as "Park Street Burial Ground." It was erected in memory of 15 Revolutionary War soldiers buried here. The third sign is a bronze plaque mounted on a low granite base of recent construction. It identifies the site as "First Burial Ground, 1642 until 1794" and notes that it contains the remains of Daniel Thompson and Ashael Porter, who fought at the battles of Lexington and Concord.

First Burial Ground is an evocative place, one of the oldest surviving cultural resources in Woburn. It retains its colonial character and has an outstanding collection of early slate gravestones, including many carved by noted stone carver Joseph Lamson and other members of the Lamson family. The surrounding area, including the vacant lot to the northeast and the rear of the adjacent commercial buildings, is poorly screened and detracts from the historic setting.

#### **Archaeological Description**

While no ancient Native American sites are recorded in the burial ground, sites may be present. One site is recorded in the general area (within one mile). Environmental characteristics of the burial ground do not represent locational criteria (slope, soil drainage, proximity to wetlands) that favor the presence of Native American sites. While natural soils at the cemetery appear well drained, much of the area is steeply sloped and located over 1,000 feet from the nearest wetlands. Landscaping that included

(continued)

**United States Department of the Interior  
National Park Service**

**National Register of Historic Places  
Continuation Sheet**

**First Burial Ground  
Woburn, Middlesex County, MA**

Section number 7 Page 4

---

terracing, construction of the town pound in the southwestern corner of the burial ground along Park Street, and excavation. Of over 270 graves have also adversely affected the integrity of soil stratigraphy in the area and any resources that were present. Given the above information and the small size of the nominated parcel (1.4 acres), a low potential exists for locating significant ancient Native American resources in the burial ground.

A high potential exists for the recovery of historic archaeological resources in the First Burial Ground. Additional documentary research combined with archaeological survey and testing may locate evidence of unmarked graves, funerary related artifacts, boundary markers, wall fragments, post holes, and the town pound that existed in the burial ground area. Unmarked graves may include stratigraphic evidence of a burial shaft, casket, human remains, and artifacts including personal items of the deceased and memorial offerings buried with the individual(s). Unmarked graves may include multiple interments, partial sets of human remains, or no remains at all. Partial sets of human remains may result from relocated graves that did not remove or re-bury the entire individual or buried body parts. The absence of human remains may result from relocated graves or memorial graves for individuals buried or lost elsewhere. Older graves were reportedly moved when the town pound was constructed. Gravestones, footstones and artifacts related to memorial services may also be found in archaeological contexts throughout the cemetery. Structural evidence of stone walls, post holes, and other boundary markers may be found around the periphery of the burial ground as it changed through time and incorporated areas such as the town pound. Family burial areas may also be marked with boundary markers. Structural evidence of outbuildings related to cemetery operations and maintenance may also exist although none have yet been identified.

(end)

**First Burial Ground**  
Name of Property

**Middlesex County, MA**  
County and State

---

## 8. Statement of Significance

### Applicable National Register Criteria

(Mark "x" in one or more boxes for the criteria qualifying the property for National Register listing)

A Property is associated with events that have made a significant contribution to the broad patterns of our history.

B Property is associated with the lives of persons significant in our past.

C Property embodies the distinctive characteristics of a type, period, or method of construction or that represent the work of a master, or possesses high artistic values, or that represent a significant and distinguishable entity whose components may lack individual distinction.

D Property has yielded, or may be likely to yield, information important in prehistory or history.

### Criteria Considerations

(Mark "x" in all the boxes that apply) N/A

Property is:

A owned by religious institution or used for religious purposes

B removed from its original location

C a birthplace or grave

D a cemetery

E a reconstructed building, object, or structure

F a commemorative property

G less than 50 years of age or achieved significance within the past 50 years

### Narrative Statement of Significance

(Explain the significance of the property on one or more continuation sheets)

See continuation sheets

---

## 9. Major Bibliographic References

(Cite the books, articles, and other sources used in preparing this form on one or more continuation sheets)

See continuation sheets

### Previous documentation on file (NPS)

- preliminary determination of individual listing (36 CFR 67) has been requested
- previously listed in the National Register
- previously determined eligible by the National Register
- designated a National Historic Landmark
- recorded by Historic American Buildings Survey #

### Primary location of additional data

- State Historic Preservation Office
- Other State agency
- Federal Agency
- Local Government
- University
- Other

**Name of Repository:** Woburn Public Library

United States Department of the Interior  
National Park Service

National Register of Historic Places  
Continuation Sheet

First Burial Ground  
Woburn, Middlesex County, MA

Section number 8 Page 1

**8. SIGNIFICANCE**

The First Burial Ground is the oldest burial place in Woburn, dating to approximately 1646 when the present town center was established. It remained the community's primary graveyard until 1794, and was used occasionally after that, with the last interment in 1903. It is a good example of a colonial burial ground that retains strong historical associations and an excellent collection of 17<sup>th</sup> and 18<sup>th</sup> century slate gravestones. The site possesses integrity of location, design, materials, workmanship, feeling and association, and meets National Register Criteria A and C on the local level with a period of significance extending from 1646 to 1903. The site may also have archaeological significance associated with unmarked graves and buried headstones.

The burial ground meets Criterion A due to its strong associations with the early settlement and history of Woburn. It was the only municipal burying ground in active use for the town's first 160 years and contains the graves of over 270 of the town's early citizens, represented by 203 gravestones and monuments. It is a well-preserved example of a colonial New England burial ground that illustrates evolving ideas of death and commemoration in the late 17<sup>th</sup> and 18<sup>th</sup> centuries. Fifteen Revolutionary War veterans are buried here, as are many of the town's founders.

The burial ground meets Criterion C as a well-preserved early graveyard that illustrates the evolving styles of funerary art in Woburn and New England. Most of the gravestones are made of gray slate with shouldered main block headed by a round-arched tympanum and display the winged death's head typical of the 18<sup>th</sup> century. Many of the stones display distinctive carving styles of the well-known Lamson family of carvers from the Charlestown/Malden area, one of the earliest and most important producers of colonial gravestones in New England. There are also two 19<sup>th</sup> century monuments, three marble headstones and a sandstone table tomb.

First Burying Ground meets Criteria Consideration D because it contains graves of persons of transcendent importance to the early settlement and development of Woburn, as well as because of its age, its distinctive headstone design, and the skilled carving of many of the gravestones.

Woburn, ten miles north of Boston, was originally an outlying village of Charlestown, and was settled in 1642. The present town center was established a few years later with a common by 1646 and meeting house around that time. The First Burying Ground was probably established shortly after that and remained the primary municipal burying ground until 1794 when the Second Burying Ground was established. Initially there were about 30 families in the fledgling community, most from Charlestown. This number had roughly doubled by 1675 but a smallpox epidemic in 1677 reduced the population temporarily. A century later in 1775 the population of the Woburn/Burlington area had grown to 1,515.

(continued)

United States Department of the Interior  
National Park Service

National Register of Historic Places  
Continuation Sheet

First Burial Ground  
Woburn, Middlesex County, MA

Section number 8 Page 2

---

Among those buried at the First Burial Ground are four of the town's early ministers and Captain Edward Johnson (1598 – 1672), one of the founders of Woburn and author of *The Wonder Working Providence of Zion's Saviour in New England*, the first printed history of New England (1653). Later burials included 15 soldiers who fought in the Revolutionary War, including Daniel Thompson and Asahel Porter, casualties of the battles of Lexington and Concord.

The first mention of the burial ground in town records dates to 1662. Other early references include payment of 3 shillings and 6 pence to Gershom Flagg in 1678 for "Cutter's grave" and in 1679 John Houghton was appointed "to ring the bell, to dig graves and to cleanse the meetinghouse." The cemetery was closed in 1794 as it had become full. However there were several later interments, including members of the Baldwin and Fowle families, both commemorated by impressive monuments. The Second Burial Ground on Montvale Avenue was active from 1794 to 1845. Since 1845 Woodbrook Cemetery on Salem Street has been the primary municipal burying ground. Calvary Catholic Cemetery was established on Washington Street in the southern part of the community in the 19<sup>th</sup> century, with a small Jewish cemetery adjacent to it.

While the First Burial Ground saw few changes in the 19<sup>th</sup> century, its surroundings continued to evolve. The adjacent hill to the northeast was the site of a powder house erected during the War of 1812 and has been called both Magazine Hill and Powder House Hill. Park Street, which runs along the western edge of the cemetery was initially known as "burying ground lane" and became Park Street when the town accepted it in 1846. The name was derived from a small park owned by G.R. Gage that was located at the corner of present day Park and Centre Streets. Initially the entrance to the burial ground was located near that corner where there was a spring-fed horse trough, but it was later relocated further south to its present location. The stone wall along the Park and Centre Street frontage probably also dates to the 19<sup>th</sup> century when Park Street was created. There were also administrative changes. Until 1824 the burial ground was administered by the First Parish Church. After that the town assumed responsibility.

The current configuration of the burial ground largely reflects its 18<sup>th</sup> century size and shape but there have been minor boundary adjustments. At some point a town pound was carved out of the southwestern corner of the burial ground along Park Street (see 1873 atlas) with some of the oldest graves reportedly relocated at that time. The pound was later removed and the land that it occupied is now part of the burial ground. The lot where the Fowle monument is located is shown on the 1873 atlas as a separate parcel and is now considered part of the burial ground. Otherwise the boundaries of the 1873 atlas correspond with the 2000 Existing Conditions Plan by Allen and Major Associates (copy attached).

The First Burial Ground is unusually well-documented. A narrative history and an inventory of

(continued)

United States Department of the Interior  
National Park Service

National Register of Historic Places  
Continuation Sheet

First Burial Ground  
Woburn, Middlesex County, MA

Section number 8 Page 3

gravestone inscriptions was published by William R. Cutter in 1866, building upon an earlier list compiled by Nathan Wyman in 1847. There were 269 epitaphs recorded in 1866, four less than there were in 1847 (presumably indicating that four headstones had disappeared in the meantime). Two stones were erected in the 19<sup>th</sup> century to honor individuals who had died in the 18<sup>th</sup>; two monuments were erected in the 19<sup>th</sup>. John F. Barrett (1832-1903), whose marble headstone lies near the Fowle monument, is the only 20<sup>th</sup> century burial. Cutter also recorded a breakdown of burials by chronological period. There were 24 burials before 1700, many of which no longer have extant headstones; 128 burials between 1700 and 1750; 84 burials between 1750 – 1775; and 38 burials between 1775 and 1793. Only a few burials occurred after 1800, primarily members of the Baldwin and Fowle families.

Cutter notes that during the earlier periods there was a high mortality rate for women under 40 (presumably associated with childbirth) and that after the Revolution there were few burials and that most were older people. The first burial for which a headstone remains is that of Deacon Josiah Convers (Converse) (d. 1689-90, age 72), followed by Lt. James Fowle (d. 1690, age 49), Elizabeth Carter (d. 1691, age 78), and Ann Convers (Converse) (d. 1691, age 69 (?), [photo 4](#)) wife of James, who was followed a few days later by her infant son Edward (age three days). Cutter also notes that the Richardson family are the most numerous here, with 62 recorded burials.

There is little documentation from the 20<sup>th</sup> century but a ca. 1910 photo from a newspaper article on the burial ground shows it considerably more tree-covered than it is today, with scattered evergreen and deciduous trees. In a 1952 monograph on the cemetery, Cemetery Commissioner S. Robert Cummings commented,

*"I regret to say that instead of a sanctified contemplative retreat, it has often served as a playground for children, idlers and dogs as evidenced every year by the amount of refuse that has to be cleared up before the grass can be cut."*

The burial ground has endured for nearly 350 years, with relatively few changes since 1800. It has an outstanding collection of skillfully carved colonial headstones. The stones are appreciated by the citizens of Woburn, who have recently conducted a detailed inventory of them. Many stones are in good condition, while others are threatened by centuries of weathering and are in need of conservation. Recent efforts to preserve and maintain the First Burial Ground have included participation in the Massachusetts Department of Environmental Management's Historic Cemeteries Initiative, which prepared a conceptual master plan and made prioritized recommendations for improvements.

(continued)

**United States Department of the Interior  
National Park Service**

**National Register of Historic Places  
Continuation Sheet**

**First Burial Ground  
Woburn, Middlesex County, MA**

Section number 8 Page 4

---

**Archaeological Significance**

Historic archaeological resources described above have the potential to contribute important information on the early settlement, history, and population of Woburn from the 17<sup>th</sup> through 19<sup>th</sup> centuries. Identification and mapping of unmarked and marked graves may establish the evolution of burial patterns in the burial ground, the exact date when the burial ground was established, and the extent that early graves were relocated for construction of the town pound. Research identified above may also identify exactly when the town pound was established. The identification of unmarked graves can help identify overall boundaries for the burial ground and its internal subdivisions based on kinship, ethnicity, and socio-economic status. Unmarked graves may contribute important information that indicates how the community treated its less fortunate and usually less documented deceased members including 17<sup>th</sup> and early 18<sup>th</sup> century slaves, unknown persons, paupers, and other indigent persons. Many individuals included in the groups listed above were often buried in unmarked graves around the periphery of the burial grounds or in designated areas yet to be identified.

Osteological studies of human remains associated with unmarked and marked burials may contribute a wealth of information relating to the overall health, general appearance, and pathologies that affected Woburn's early population. Detailed analysis of skeletal remains may contribute important information on the general stature of individuals, ethnic, and socio-economic groups and the accidents and disease that affected those groups.

**(end)**

**First Burial Ground**  
Name of Property

**Middlesex County, MA**  
County and State

---

### 10. Geographical Data

---

#### Acreage of Property

1.4 acre

#### UTM References

(place additional UTM references on a continuation sheet)

1. 19 Zone	323020 Easting	4705280 Northing	3. 19 Zone	Easting	Northing
2. 19 Zone	Easting	Northing	4. 19 Zone	Easting	Northing

See continuation sheet

#### Verbal Boundary Description

(Describe the boundaries of the property on a continuation sheet)

#### Boundary Justification

(Describe why the boundaries were selected on a continuation sheet)

---

### 11. Form Prepared By

---

name/title Shary Page Berg, preservation consultant, with Betsy Friedberg, NR Director, MHC

organization Massachusetts Historical Commission date September 2004

street & number 220 Morrissey Boulevard telephone 617-727-8470

city or town Boston state MA zip code 02125

---

### Additional Documentation

---

Submit the following items with the completed form:

#### Continuation Sheets

##### Maps

A USGS map (7.5 or 15 minute series) indicating the property's location.

A sketch map for historic districts and properties having large acreage or numerous resources.

##### Photographs

Representative black and white photographs of the property.

**Additional Items** (check with the SHPO or FPO for any additional items)

---

### Property Owner

---

(Complete this item at the request of the SHPO or FPO)

name City of Woburn

street and number 10 Common Street telephone 781-935-3010

city or town Woburn state MA zip code 01801

**United States Department of the Interior  
National Park Service**

**National Register of Historic Places  
Continuation Sheet**

**First Burial Ground  
Woburn, Middlesex County, MA**

Section number 9, 10, 12 Page 1

---

**9. BIBLIOGRAPHY**

Coady, Marie et al. "First Burial Ground Inventory." Unpublished manuscript and notes on file at Woburn Redevelopment Authority, 2002.

Cummings, S. Robert. "The Public Cemeteries of Woburn." Woburn Cemetery Commission pamphlet, 1952.

Cutter, William R. "Notes for a Concise History of Woburn" in Edward F. Johnson, *Woburn Records of Births, Deaths and Marriages from 1640 to 1873, Part III - Marriages*. Boston: Winship, Daniels & Co., 1891.

Gabel, Laurel K., gravestone expert. Personal communication, May 2002.

Massachusetts Historical Commission. Survey files and 1980 town narrative.

Sewall, Samuel. *The History of Woburn, Middlesex County, Massachusetts*. Boston: Wiggin and Lunt Publishers, 1868.

Tucker, Ralph. "The Lamson Family Gravestone Carvers of Charlestown and Malden, Massachusetts" in *Markers*, Vol. X, Journal of the Association for Gravestone Studies.

Woburn Public Library. Local history files.

(end)

**10. GEOGRAPHICAL DATA**

**Verbal Boundary Description**

First Burial Ground is bounded on the southwest by Park Street; on the west by Centre Street; on the northeast by Magazine Hill (an undeveloped former quarry), and on the east by the rear of commercial properties that front on Main Street. The cemetery encompasses the southern portion of assessors map 51, block 5, parcel 14. The entire parcel consists of 2 acres, of which about 1.4 acres comprise the cemetery. The boundary between the cemetery and the adjacent undeveloped city-owned parcel to the north is marked by a chain link fence and delineated on Existing Conditions Plan C-1, Magazine Hill, Woburn, MA by Allen and Major Associates Inc, 4/25/2000.

**Boundary Justification**

The boundary includes the entire burial ground developed between 1642 and 1903 including the former town pound and the Fowle lot.

(end)

United States Department of the Interior  
National Park Service

National Register of Historic Places  
Continuation Sheet

First Burial Ground  
Woburn, Middlesex County, MA

Section number 9, 10, 12 Page 2

---

12. LIST OF PHOTOGRAPHS

<i>NR Photo #</i>	<i>Location/Description</i>	<i>Date</i>	<i>Photo by</i>
1	View northeast from Park Street with burial ground entrance at right	5/2002	Shary Berg
2	View northeast towards Quarry Hill with path and flagpole at right and Baldwin monument at left	5/2002	Shary Berg
3	View southeast from near Baldwin monument towards town center and common	5/2002	Shary Berg
4	Ann Convers (Converse) (d. 1691) headstone	5/2002	Shary Berg
5	Daniel Thompson (d. 1775) headstone	5/2002	Shary Berg
6	Dorothy Gardner (d. 1787) headstone	5/2002	Shary Berg

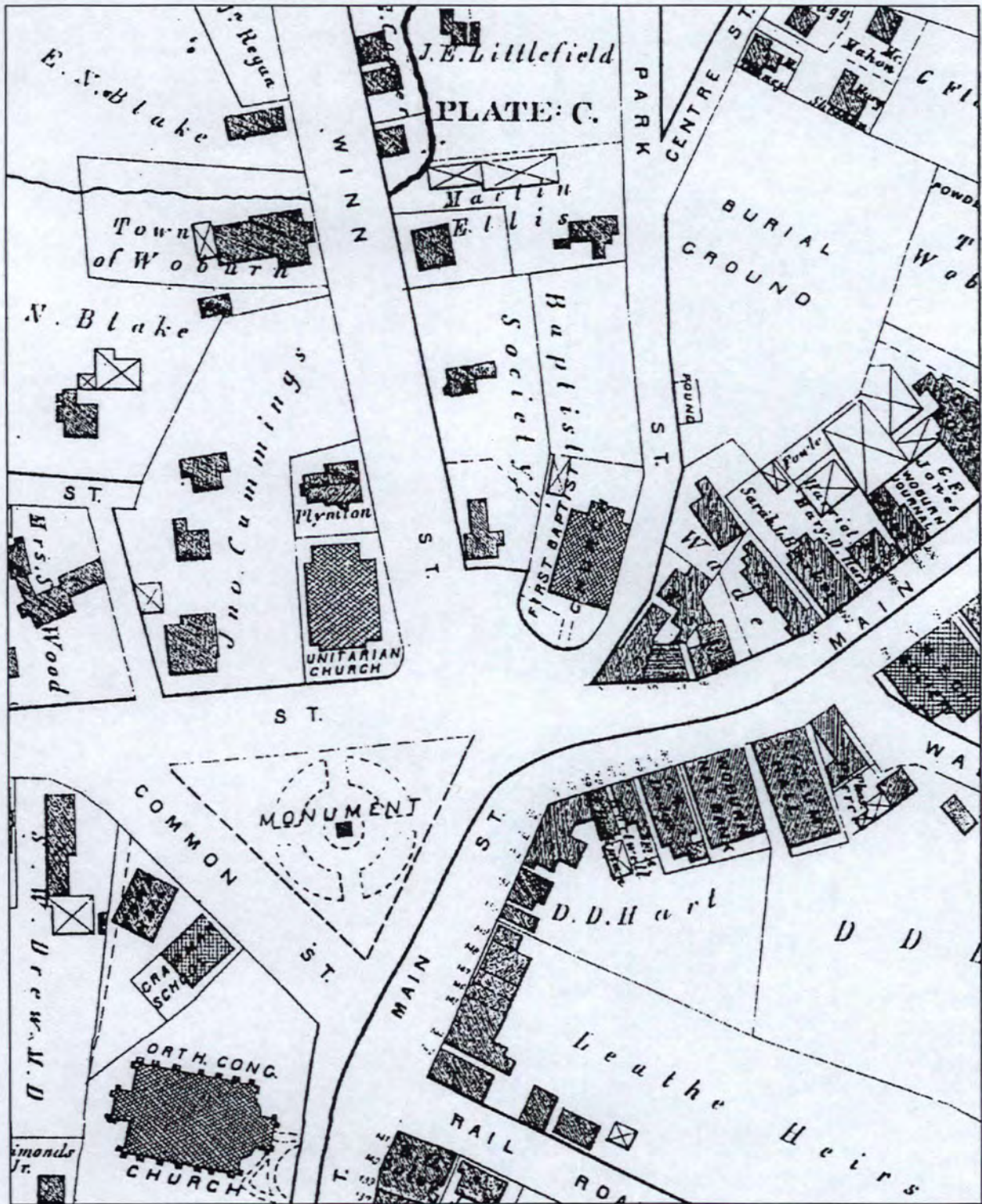
**First Burial Ground**  
**Woburn (Middlesex County), Massachusetts**  
**National Register District Data Sheet**  
**August 2004**

MHC #	NR #	Historic Name	Description/Materials	Date	Status	Type
-------	------	---------------	-----------------------	------	--------	------

		First Burial Ground		1642		1 Site
	1	Perimeter Wall	Fieldstone	19 <sup>th</sup> cent	Contrib	1 Structure
	2	Chain Link Fence	Metal	Late 20 <sup>th</sup> cent	Non-contrib	1 Structure
	3	Stepped path, plaza and flagpole	Granite, concrete	Late 20 <sup>th</sup> cent	Non-contrib	3 Structures
	4	Ann Convers headstone	Slate, carved by Joseph Lamson	Ca. 1691	Contrib	1 Object
	5	Lt. James Thomson headstone	Slate, carved by Joseph Lamson	Ca. 1693	Contrib	1 Object
	6	Francis Wyman headstone	Slate, carved by Joseph Lamson	Ca. 1699	Contrib	1 Object
	7	Sarah Johnson headstone	Slate, carved by Joseph Lamson	Ca. 1710	Contrib	1 Object
	8	Abraham Fyfeild headstone	Slate, carved by Joseph Lamson	Ca. 1711	Contrib	1 Object
	9	Samuel Richardson headstone	Slate, carved by Joseph Lamson	Ca. 1712	Contrib	1 Object
	10	John Burbeen headstone	Slate, carved by Joseph Lamson	Ca. 1713	Contrib	1 Object
	11	Benjamin Wyman headstone	Slate, carved by Lamson studio	Ca. 1774	Contrib	1 Object
	12	Daniel Thompson headstone	Slate, carved by Lamson studio	Ca. 1775	Contrib	1 Object
	13	Dorothy Gardner headstone	Slate, carved by Lamson studio	Ca. 1787	Contrib	1 Object
	14	Eleazar Flagg Pool headstone	Slate, carver unknown	Ca. 1776	Contrib	1 Object
	15	Benjamin Brook headstone	Slate, carver unknown	Ca. 1769	Contrib.	1 Object
	16	Abigail Wyman headstone	Slate, carver unknown	Ca. 1772	Contrib	1 Object
	17	Judith Tyng headstone	Slate, carver unknown	Ca. 1736	Contrib	1 Object
	18	Baldwin Family monument	Granite block obelisk	Early 19 <sup>th</sup> cent	Contrib	1 Object
	19	James Fowle monument	Marble column and pedestal, granite base	Ca. 1856	Contrib	1 Object
	20	Commemorative plaques	Iron, bronze	Late 20 <sup>th</sup> cent	Non-contrib	3 Objects

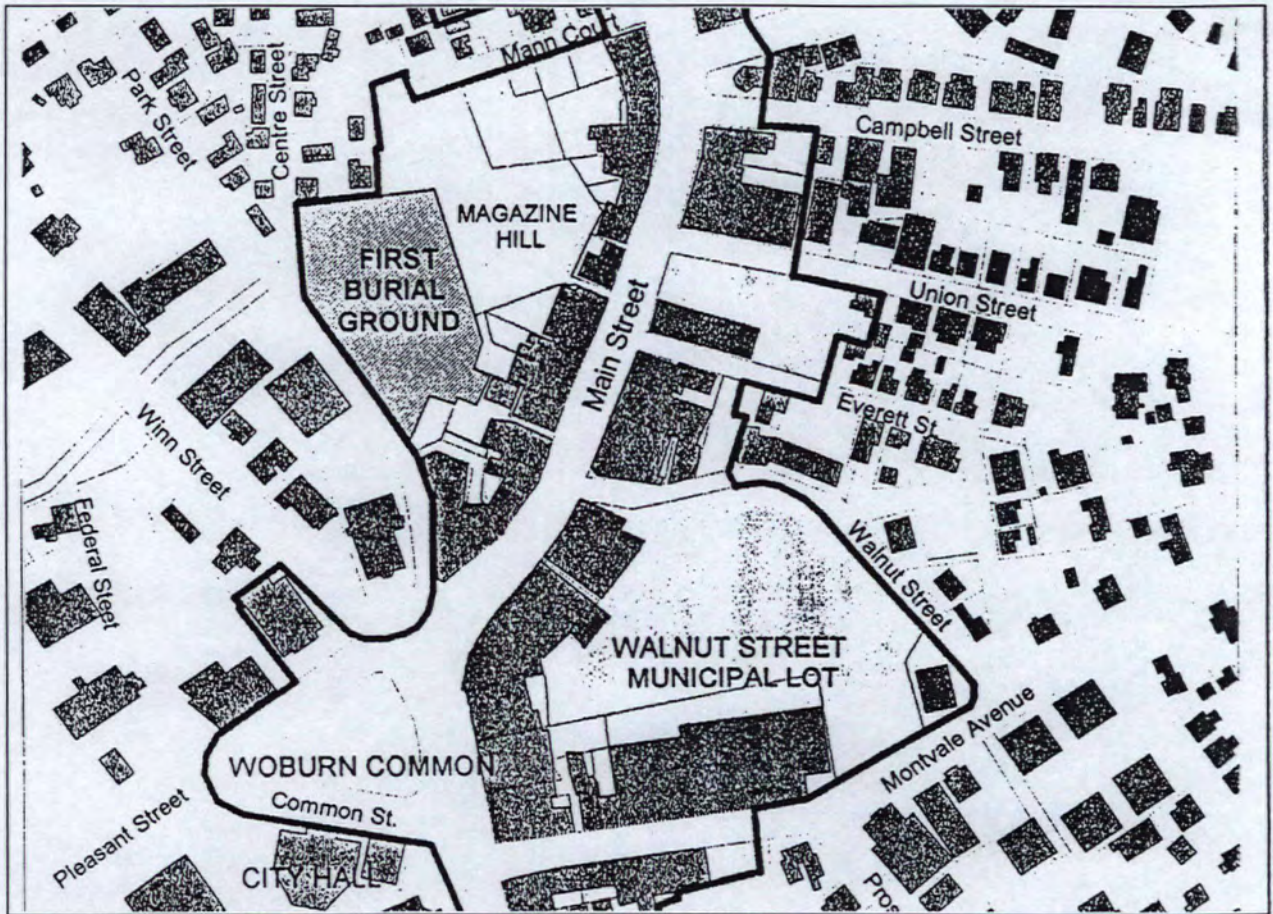
Data sheet includes a selective accounting of noteworthy resources from the cemetery.

	Contributing	Non-contrib
Building	-	-
Site	1	-
Structure	1	4
Object	16	3
Total	18	7



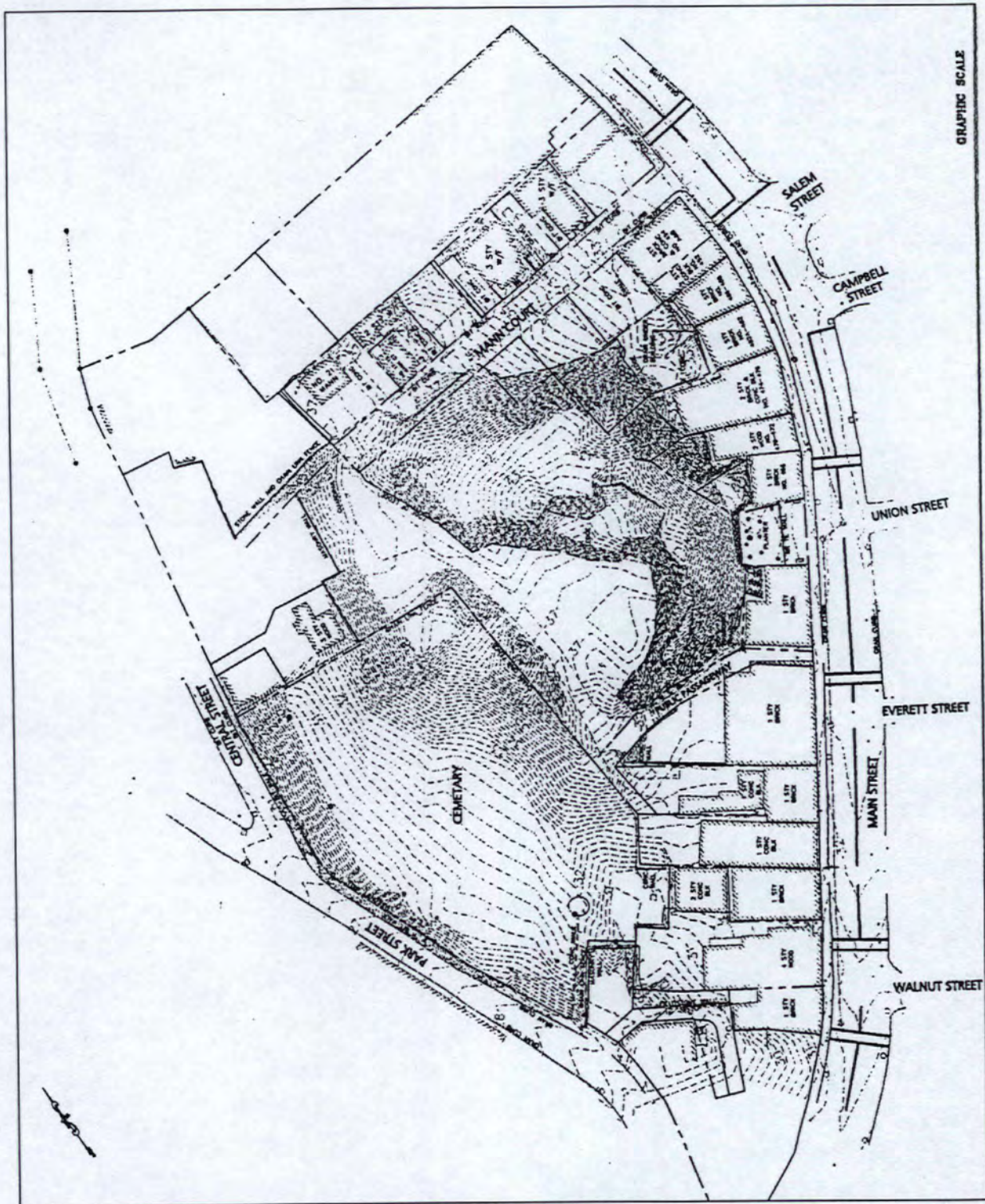
Detail of 1873 Woburn Atlas with burial ground at upper right hand corner. Note pond and Fowle lot which have subsequently been incorporated into the burial ground.

First Burial Ground, Woburn, Middlesex County, MA



Detail of Woburn Redevelopment Authority Map showing current site context

**First Burial Ground, Woburn, Middlesex County, MA**



Existing Conditions Plan C-1 by Allen & Major Associates for Woburn Redevelopment Authority  
 4/25/2000

**First Burial Ground, Woburn, Middlesex County, MA**



UNITED STATES DEPARTMENT OF THE INTERIOR  
NATIONAL PARK SERVICE

NATIONAL REGISTER OF HISTORIC PLACES  
EVALUATION/RETURN SHEET

REQUESTED ACTION: NOMINATION

PROPERTY First Burial Ground  
NAME:

MULTIPLE  
NAME:

STATE & COUNTY: MASSACHUSETTS, Middlesex

DATE RECEIVED: 10/01/04 DATE OF PENDING LIST: 10/29/04  
DATE OF 16TH DAY: 11/13/04 DATE OF 45TH DAY: 11/14/04  
DATE OF WEEKLY LIST:

REFERENCE NUMBER: 04001222

REASONS FOR REVIEW:

APPEAL: N DATA PROBLEM: N LANDSCAPE: N LESS THAN 50 YEARS: N  
OTHER: N PDIL: N PERIOD: N PROGRAM UNAPPROVED: N  
REQUEST: N SAMPLE: N SLR DRAFT: N NATIONAL: N

COMMENT WAIVER: N

ACCEPT  RETURN  REJECT 11.13.04 DATE

ABSTRACT/SUMMARY COMMENTS:

Entered in the  
National Register

RECOM./CRITERIA \_\_\_\_\_

REVIEWER \_\_\_\_\_ DISCIPLINE \_\_\_\_\_

TELEPHONE \_\_\_\_\_ DATE \_\_\_\_\_

DOCUMENTATION see attached comments Y/N see attached SLR Y/N

If a nomination is returned to the nominating authority, the nomination is no longer under consideration by the NPS.



First Burial Ground  
Woburn, Middlesex County, MA

2002

Photo 1 - overview w/ Balducci Monument in background

HERE LYES Y BODY OF  
ANN CONUERS WIFE  
TO JAMES CONUERS  
AGED 69 YEARS  
DIED AUGUST THE  
10 1691

First Burial ground, Woburn, Middlesex County, MA 2002

Photo #2 - Ann Convers headstone, 1691



First Burying Ground, Woburn, Middlesex Co, MA

ZONA PHOTO<No. 10>002  
135 14\*\* N-1 N-205 2(035)©

Photo 3 - View Southeast toward town centre

S/2002

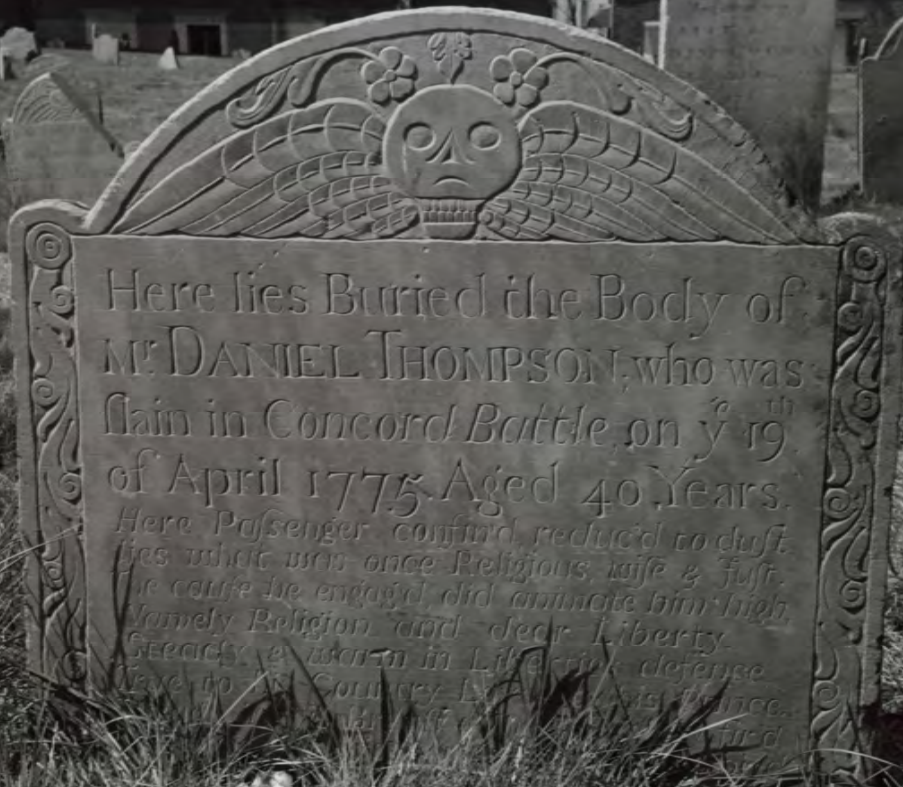


HERE LYES Y BODY OF  
ANN CONUERS WIFE  
TO JAMES CONUERS  
AGED 69 YEARS  
DIED AUGUST THE  
10 1691

First Burial Ground, Woburn, Middlesex Co, MA

ZONA PHOTO<No.11A>010  
135 14\*\* N-1 N-1 14N 2<035>©

Photo 4 - Headstone of Ann Converse (Converse) (d. 1691) S/2002

A black and white photograph of a gravestone for Daniel Thompson. The stone is rectangular with a decorative, arched top featuring a central skull with a sad expression, flanked by floral motifs. The text on the stone is engraved in a serif font. The stone is set in a cemetery with other headstones visible in the background and tall grass in the foreground.

Here lies Buried the Body of  
MR DANIEL THOMPSON, who was  
slain in Concord Battle on y<sup>e</sup> 19<sup>th</sup>  
of April 1775 Aged 40 Years.

Here Passenger confined reduced to dust  
lies what was once Religious wife & Just  
in cause he engag'd did annote him high  
Noble Religion and dear Liberty  
SERRYS & warm in Liberty's defence  
True to his Country Liberty's defence  
True to his Country Liberty's defence

First Burial Ground, Woburn, Middlesex Co, MA

ZONA PHOTO<No. 7A>008  
135 14\*\* N-1 N N-04 2<035>©

Photo 5 Headstone of Daniel Thompson (d. 1775) S/2002



In Memory of  
MRS DOROTHY GARDNER  
Wife of  
MR SAMUEL GARDNER  
who died  
Feb<sup>ry</sup> the 11 1787

First Burial Ground, Woburn, Middlesex Co, MA

ZONA PHOTO<No. 6A>005  
115-14\*\* N-1 N N-03 2<035> ©

Photo 6 - Headstone of Dorothy Gardner (d. 1787)

5/2002

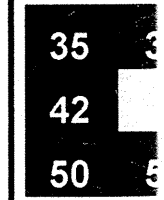


LEGEND

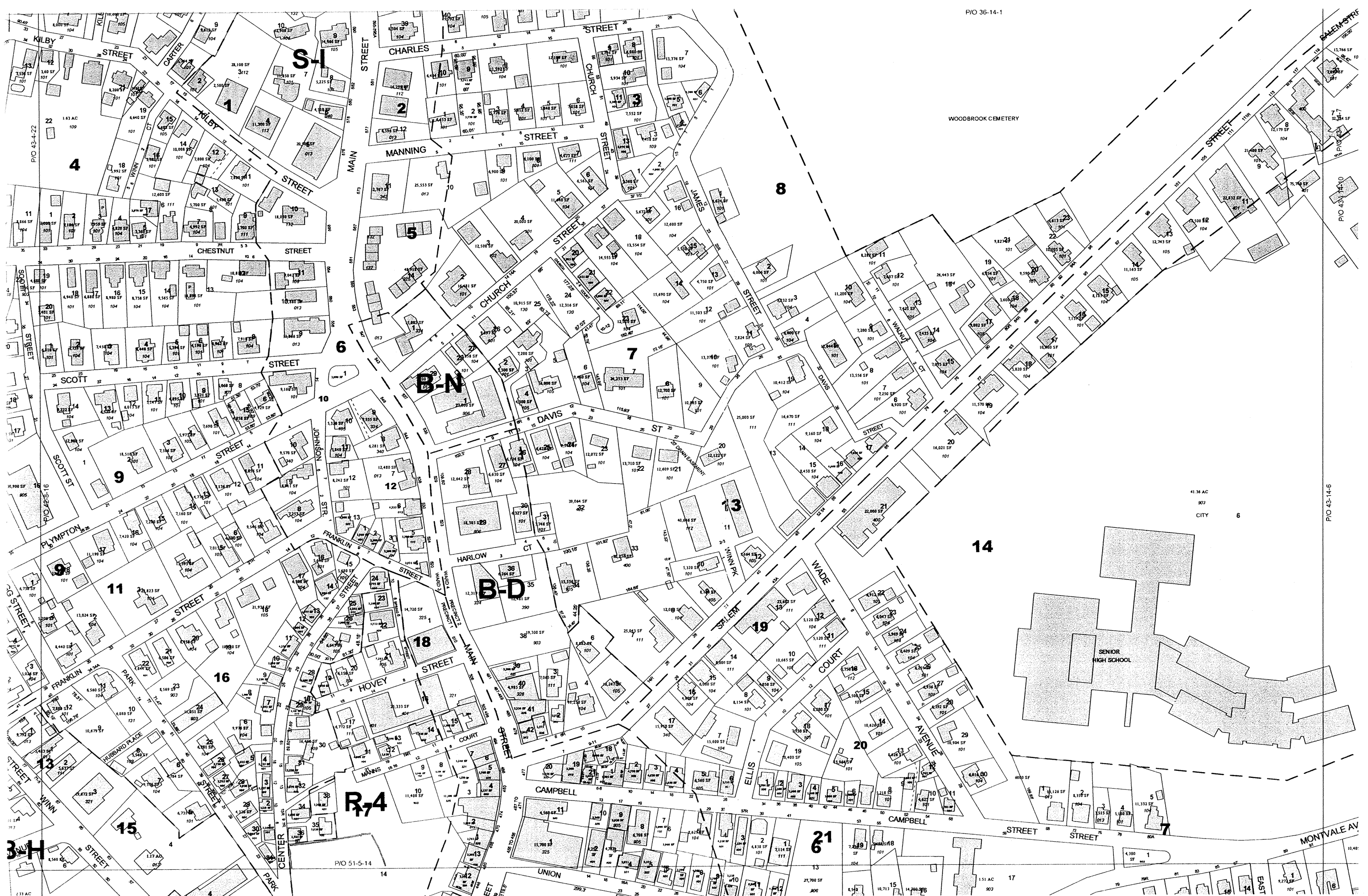
- City
- Pr
- Zo
- Ea
- Ri
- Pa
- W
- Bu
- 12 Pa
- 8 Bl
- 5,275 SF Ac
- 83.35' Di
- R-2 Zo



THIS MAP IS PREPARED FROM AERIAL PHOTOGRAPHS AND IS COMPILED FROM PLATS, TAX MAPS, SURVEY MAPS, AND OTHER PUBLIC RECORDS. THE INFORMATION CONTAINED HEREIN IS FOR INFORMATIONAL PURPOSES ONLY AND DOES NOT CONSTITUTE A WARRANTY OF ANY KIND. THE CITY OF WORCESTER ASSUMES NO LIABILITY FOR ANY ERRORS OR OMISSIONS.

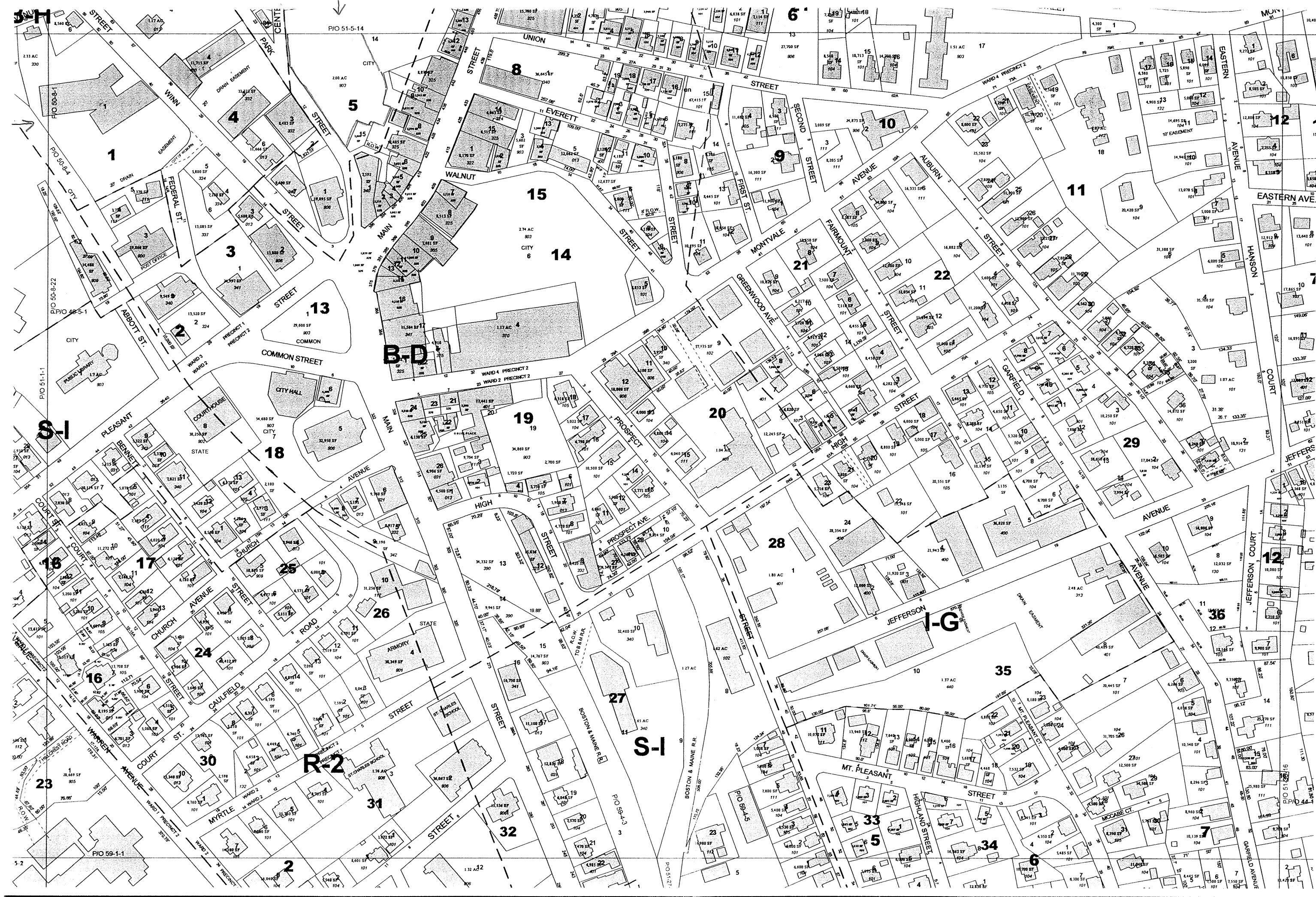


CONVERSION DATA  
 REVISION DATA  
 City of Worcester  
 Engineering



First Burial Ground National Register Nomination  
Woburn, Middlesex County, MA Map 2 of 2

Accession maps.  
First Burial Ground  
Woburn



- LEC
- 20' Easement
  - 12' Easement
  - 8' Easement
  - 5,275 SF
  - 83.35'
  - R-2

42  
50  
58

Scale 1 in.  
50 0 50

CONVERSION D  
REVISION D  
City  
Engineer

THIS MAP IS PREPARED BY THE CITY ENGINEER AND IS COMPILED FROM PLATS, TAX MAPS, SURVEY MAPS, AND OTHER PUBLIC RECORDS. THE CITY ENGINEER HAS MADE A REASONABLE ATTEMPT TO VERIFY THE INFORMATION CONTAINED HEREON, BUT HE MAKES NO WARRANTY AS TO THE ACCURACY OF THE INFORMATION CONTAINED HEREON.

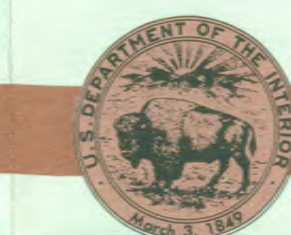
First Burial Ground National Register Nomination  
Woburn, Middlesex County, MA Map 1 of 2

1:25 000-scale metric  
topographic map



7.5 X 15 MINUTE QUADRANGLE  
SHOWING

- Contours and elevations in meters
- Highways, roads and other manmade structures
- Water features
- Woodland areas
- Geographic names



GEOLOGICAL SURVEY

1985

Produced by the United States Geological Survey in cooperation with Massachusetts Department of Public Works

Control by USGS, NOS/NOAA, and Commonwealth of Massachusetts agencies  
Compiled by photogrammetric methods from aerial photographs taken 1978. Field checked 1979. Map dated 1985  
Supersedes Boston North and Lexington 1:25,000-scale maps dated 1971

Selected hydrographic data compiled from NOS chart 13272 (1982)  
This information is not intended for navigational purposes  
Projection and 1000-meter grid: Universal Transverse Mercator, zone 19  
10,000-foot grid ticks based on Massachusetts coordinate system, maintained zone, 1927 North American Datum  
To place on the predicted North American Datum 1983 move the projection lines 4 meters south and 41 meters west as shown by dashed corner ticks  
There may be private subdivisions within the boundaries of the National or State reservations shown on this map

CONTOUR INTERVAL 3 METERS  
NATIONAL GEODETIC VERTICAL DATUM OF 1929  
CONTROL ELEVATIONS SHOWN TO THE NEAREST 0.3 METER  
OTHER ELEVATIONS SHOWN TO THE NEAREST 0.3 METER  
DEPTH CLINES AND SOUNDINGS IN METERS  
DATUM IS MEAN LOW WATER  
THE RELATIONSHIP BETWEEN THE TWO DATUMS IS VARIABLE  
SHORELINE SHOWN REPRESENTS THE APPROXIMATE LINE OF MEAN HIGH WATER  
THE MEAN RANGE OF TIDE IS APPROXIMATELY 2.9 METERS

THIS MAP COMPLIES WITH NATIONAL MAP ACCURACY STANDARDS

FOR SALE BY U.S. GEOLOGICAL SURVEY

DENVER, COLORADO 80225, OR RESTON, VIRGINIA 22092

Meters	Feet	DECLINATION DIAGRAM	ADJOINING MAPS
1	3.2808		1 Billionaire
2	6.5617		2 Reading
3	9.8425		3 Salem
4	13.1234		4 Maynard
5	16.4042		5 Lynn
6	19.6850		6 Framingham
7	22.9659		7 Boston South
8	26.2467		8 Hull
9	29.5276		
10	32.8084		

ISBN 0-607-23443-1  
9 780607 234435

Topographic Map Symbols

- Primary highway, hard surface
- Secondary highway, hard surface
- Light-duty road, hard or improved surface
- Unimproved road, trail
- Route marker: Interstate, U. S. State
- Railroad: standard gauge; narrow gauge
- Bridge: drawbridge
- Footbridge: overpass; underpass
- Built-up area: only selected landmark buildings shown
- House; barn; church; school; large structure
- Boundary:
  - National, with monument
  - State
  - County, parish
  - Civil township, precinct, district
  - Incorporated city, village, town
  - National or State reservation; small park
  - Land grant with monument; found section corner
  - U. S. public lands survey; range, township, section
  - Range, township, section line; location approximate
  - Fence or field line
  - Power transmission line, located tower
  - Dam; dam with rock
  - Cemetery; grave
  - Campground; picnic area; U. S. location monument
  - Windmill; water well; spring
  - Mine shaft; prospect; adit or cave
  - Control: horizontal station; vertical station; spot elevation
  - Contours: index; intermediate; supplementary; depression
  - Distorted surface: strip mine, lava, sand
  - Bathymetric contours: index; intermediate
  - Personal lake and stream: intermittent lake and stream
  - Rapids, large and small; falls, large and small
  - Submerged marsh; marsh, swamp
  - Land subject to controlled inundation; woodland
  - Straw; mangrove
  - Orchard; vineyard

A pamphlet describing topographic maps is available on request





**The Commonwealth of Massachusetts**  
William Francis Galvin, Secretary of the Commonwealth  
Massachusetts Historical Commission

September 28, 2004

Ms. Carol Shull  
National Register of Historic Places  
Department of the Interior  
National Park Service  
1201 Eye Street, NW, 8<sup>th</sup> floor  
Washington, DC 20005

Dear Ms. Shull:

Enclosed please find the following nomination form:

First Burial Ground, Woburn (Middlesex), MA

The nomination has been voted eligible by the State Review Board and has been signed by the State Historic Preservation Officer. The owners of the property were notified of pending State Review Board consideration 30 to 45 days before the meeting and were afforded the opportunity to comment.

Two letters of support have been received.

Sincerely,

A handwritten signature in cursive script that reads "Betsy Friedberg".

Betsy Friedberg  
National Register Director  
Massachusetts Historical Commission

enclosure

cc: Shary Page Berg, consultant  
Tracey A. Harwood, Woburn Historical Commission  
Mayor John C. Curran, City of Woburn  
Donald Borchelt, Woburn Redevelopment Authority  
John Cashell, Woburn Planning Board



# *City of Woburn*

## Historical Commission

City Hall, 10 Common Street, Woburn MA 01801

781 354-2529

WoburnHistoricalCommission@yahoo.com

www.CityofWoburn.com

---

September 3, 2004

Betsy Friedberg, Director  
National Register Program  
Massachusetts Historic Commission  
220 Morrissey Boulevard  
Boston, Massachusetts 02125

Re: National Register Nomination of First Burial Ground, Woburn, Massachusetts

Dear Ms. Friedberg:

The Woburn Historic Commission would like to offer its strong support for the nomination of the First Burial Ground for the Massachusetts and National Registers of Historic Places. The First Burial Ground is one of the oldest landmarks in the City of Woburn. Opened when the town was founded in 1642, the site served as the community's principal cemetery until 1793, when a second yard was opened on the other side of the Center. As an historic landscape, the First Burial Ground has experienced surprisingly little change over the centuries, with the burial markers still lying in the spontaneous pattern established in the 17<sup>th</sup> Century.

The First Burial Ground is of great significance not only for the quality of its Plantation and Colonial period headstones, but also because of the important personages who were buried here. These include Captain Edward Johnson (1598-1672), founder of the Town of Woburn and author of "The Wonder Working Providence of Zion's Savior in New England," the first printed history of New England (1653). The ancestors of Presidents Franklin Pierce, Grover Cleveland, Benjamin Harrison, Calvin Coolidge, and Herbert Hoover are interred here. Daniel Thompson and Ashael Porter, casualties of the Battle of Lexington and Concord (1775), and fifteen Revolutionary War veterans are also buried within this ground. Porter was killed by the first fire of the British on Lexington Green. At the top of the hillside is the granite obelisk which marks the Baldwin family tomb. Here lies Colonel Loammi Baldwin (1745-1807), builder of the Middlesex Canal, propagator of the Baldwin Apple, and Continental Army officer. Loammi Baldwin the Younger (1780-1838)—known as the "Father of American Civil Engineering," builder of naval dry-docks, canals, and turnpikes, and designer of the Bunker Hill Monument—and his brother James F. Baldwin (1782-1862), builder of the Boston and Lowell Railroad and the Boston Water System, are also among the thirteen Baldwins entombed within. The historic significance of this important asset to the City of Woburn and to the region cannot be overstated.

The consideration and support of the Massachusetts Historic Commission in this nomination and our overall restoration effort is greatly appreciated. Thank you.

Sincerely,

Tracey A. Harwood  
*Chairman*

NR nla



CITY OF WOBURN  
MASSACHUSETTS

City Hall  
10 Common Street  
Woburn, MA 01801

(781) 932-4501  
FAX (781) 932-4506

John C. Curran  
Mayor

September 3, 2004

Ms. Betsy Friedberg  
National Register Director  
Massachusetts Historic Commission  
220 Morrissey Boulevard  
Boston, MA 02125

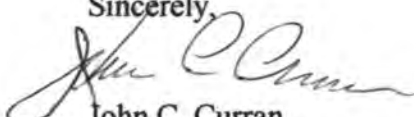
Re: National Register Nomination of First Burial Ground, Woburn, Massachusetts

Dear Ms. Friedberg:

I am writing to offer the City of Woburn's strong support for the nomination of the First Burial Ground for the National Register of Historic Places. The First Burial Ground dates from the founding of the community in 1642, and is perhaps the oldest, and certainly one of the most significant historic assets within the community. The site is located on the edge of Woburn Square, just behind the commercial blocks, where it has sometimes been overlooked as it lies in the shadow of other important historic downtown landmarks, such as the Woburn Public Library, designed by Richardson, the First Congregational Church, and the Woburn Common. However, the ancestors of five U.S. presidents are interred in the First Burial Ground, along with two casualties of the Battle of Lexington and Concord and fifteen Revolutionary War veterans.

In recent years, an informal community group has been organized, dedicated to increasing the public's awareness and appreciation of the historic value of the First Burial Ground, and the City's other historic cemeteries. Both the recognition of this important asset which will be afforded by the listing on the National Register, and, hopefully, financial support for its restoration through the approval of the City's pending MPPF application, will go a long way to securing the First Burial Ground as one of the City of Woburn's premier historic artifacts.

The consideration and support of the Massachusetts Historic Commission in this nomination, and for our overall restoration effort, is greatly appreciated.

Sincerely,  
  
John C. Curran  
Mayor