



#1347

National City: RR Freight Office
Hotel National on right

C1890

1. STATION AND GENERAL OFFICE,
CALIFORNIA SOUTHERN RAILROAD
NATIONAL CITY, CA
2. SAN DIEGO COUNTY, CA
3. PHOTOGRAPHER UNKNOWN
4. C. 1887-1895
5. SAN DIEGO HISTORICAL SOCIETY, SAN DIEGO, CA
6. WEST AND SOUTH FACADES OF STATION,
FACING NORTHEAST.
7. #1



21137

Railroads: National City Depot

c 1885

ENGINE, COAL CAR & PASSENGER CAR

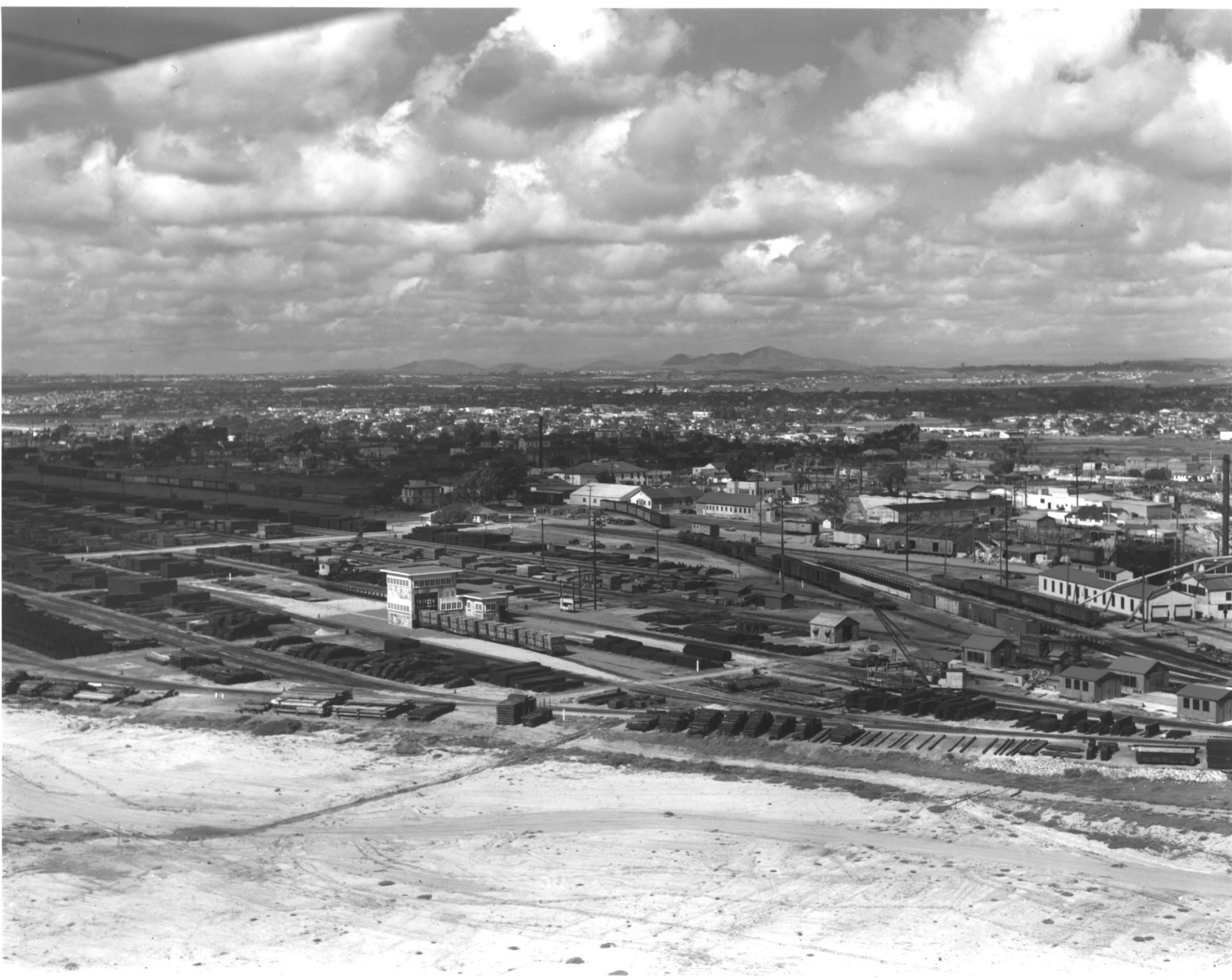
1. STATION AND GENERAL OFFICE,
CALIFORNIA SOUTHERN RAILROAD
NATIONAL CITY, CA
2. SAN DIEGO COUNTY, CA
3. UNKNOWN
4. C. 1885
5. SAN DIEGO HISTORICAL SOCIETY, SAN DIEGO, CA
6. WEST AND NORTH FACADES OF THE STATION, FACING SOUTHEAST
7. #2



12043

2-1956

1. STATION AND GENERAL OFFICE
CALIFORNIA SOUTHERN RAILROAD
NATIONAL CITY, CA
2. SAN DIEGO COUNTY, CA
3. UNKNOWN
4. C. 1956
5. SAN DIEGO HISTORICAL SOCIETY, SAN DIEGO, CA
6. WEST AND SOUTH FACADES OF STATION, FACING NORTHEAST
7. #3



6387

National City: aerial - low level

1949

Sante Fe Tie-treating plant

1. STATION AND GENERAL OFFICE
CALIFORNIA SOUTHERN RAILROAD
NATIONAL CITY, CA
2. SAN DIEGO COUNTY, CA
3. UNKNOWN
4. C. 1949
5. SAN DIEGO HISTORICAL SOCIETY, SAN DIEGO, CA
6. AERIAL PHOTOGRAPH, NOTE RELATIONSHIP TO FREIGHT LINES
7. #4



NP

NATIONAL
PROJECTS



NOTICE

CALIFORNIA So. R. R. Depot

PHOTO #1

1. STATION AND GENERAL OFFICE
CALIFORNIA SOUTHERN RAILROAD
NATIONAL CITY CA
2. SAN DIEGO COUNTY, CA
3. DOLORES MELLON
4. APRIL 6, 1994
5. ARCH. M. W. DONALDSON FAIA, INC
530 SIXTH AVE, SAN DIEGO, CA 92101
6. DEPOT'S EAST FACADE FACING
SOUTHWEST, ALSO SERVES AS THE
MAIN ENTRANCE

7. #5



CALIFORNIA So. R.R. Depot

PHOTO # 2

1. STATION AND GENERAL OFFICE
CALIFORNIA SOUTHERN RAILROAD
NATIONAL CITY CA
2. SAN DIEGO COUNTY CA
3. DOLORES MELLON
4. APRIL 6, 1994
5. ARCHITECT M W DONALDSON FAIA INC
530 SIXTH AVE SAN DIEGO CA
6. NORTH AND WEST FACADES FACING
SOUTHEAST.
7. #6

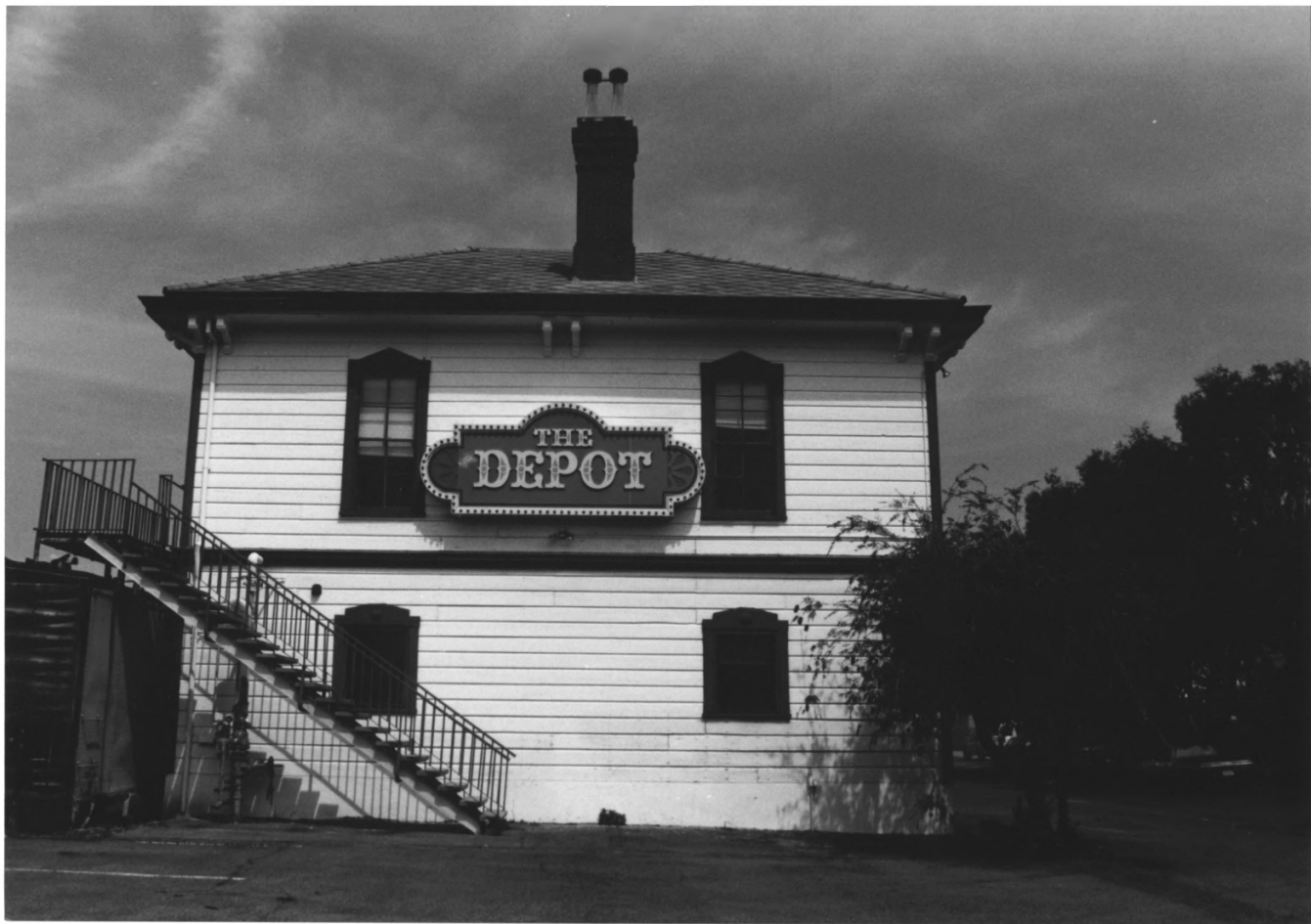


THE
DEPOT

CALIFORNIA So. R.R. Depot

PHOTO #3

1. STATION AND GENERAL OFFICE
CALIFORNIA SOUTHERN RAILROAD
NATIONAL CITY CA
2. SAN DIEGO COUNTY CA
3. DOLORES MELLON
4. APRIL 6, 1994
5. ARCHITECT M W DONALDSON FAIA INC
530 SIXTH AVE SAN DIEGO CA 92101
6. SOUTH AND WEST FACADES FACING
NORTHEAST. NOTE EXTERIOR STAIRWAY
AND FREIGHT CAR ADDITIONS
7. #7



THE
DEPOT

CALIFORNIA S.O. R.R. Depot

PHOTO #4

1. STATION AND GENERAL OFFICE
CALIFORNIA SOUTHERN RAILROAD
NATIONAL CITY CA
2. SAN DIEGO COUNTY CA
3. DOLORES MELLON
4. APRIL 6, 1994
5. ARCHITECT M W DONALDSON FAIA INC
530 SIXTH AVE SAN DIEGO CA 92101
6. SOUTH FACADE FACING NORTH
7. #8



CALIFORNIA S.O. R.R. DEPOT

PHOTO #5

1. STATION AND GENERAL OFFICE
CALIFORNIA SOUTHERN RAILROAD
NATIONAL CITY CA
2. SAN DIEGO COUNTY CA
3. DOLORES MELLON
4. APRIL 6, 1994
5. ARCHITECT M W DONALDSON FAIA INC
530 SIXTH AVE SAN DIEGO CA 92101
6. WEST FACADE FACING EAST, DOOR
ALTERATION DETAIL
7. #9



CALIFORNIA S O R R. ASST
PHOTO # 6

1. STATION AND GENERAL OFFICE
CALIFORNIA SOUTHERN RAILROAD
NATIONAL CITY, CA
2. SAN DIEGO COUNTY CA
3. DOLORES MELLON
4. APRIL 6, 1994
5. ARCHITECT M W DONALDSON FAIA INC
530 SIXTH AVE SAN DIEGO CA 92101
6. INTERIOR VIEW OF BOX CAR ADDITION
FACING WEST
7. # 10



CALIF So R.R DEPOT

PHOTO # 7

1. STATION AND GENERAL OFFICE
CALIFORNIA SOUTHERN RAILROAD
NATIONAL CITY CA
2. SAN DIEGO COUNTY CA
3. DOLORES MELLON
4. APRIL 6, 1994
5. ARCHITECT M. W. DONALDSON FAIA INC
530 SIXTH AVE SAN DIEGO CA 92101
6. EAST FACADE SECOND STORY FENESTRATION
AND ROOFLINE DETAIL
7. # 11



CALIF. SO R.R. DEPOT

PHOTO # 8

1. STATION AND GENERAL OFFICE
CALIFORNIA SOUTHERN RAILROAD
NATIONAL CITY CA
2. SAN DIEGO COUNTY CA
3. DOLORES MELLON
4. APRIL 6, 1994
5. ARCHITECT M W DONALDSON FAIA INC
530 SIXTH AVE SAN DIEGO CA 92101
6. SOUTH FACADE, FIRST FLOOR FENESTRATION
DETAIL
7. # 12



NATIONAL PROJECTS

CALIF SO RR DEPOT

PHOTO #9

1. STATION AND GENERAL OFFICE
CALIFORNIA SOUTHERN RAILROAD
NATIONAL CITY CA
2. SAN DIEGO COUNTY CA
3. DOLORES MELLON
4. APRIL 6, 1994
5. ARCHITECT M W DONALDSON FAIA INC
530 SIXTH AVE SAN DIEGO CA 92101
6. EAST AND SOUTH FACADES FACING
NORTHWEST
7. #13



CALIF. SO. R.R. DEPOT

PHOTO # 10

1. STATION AND GENERAL OFFICE
CALIFORNIA SOUTHERN RAILROAD
NATIONAL CITY CA
2. SAN DIEGO COUNTY CA
3. DOLORES MELLON
4. APRIL 6, 1994
5. ARCHITECT M W DONALDSON FATA INC
530 SIXTH AVE SAN DIEGO CA 92101
6. EAST FACADE, FIRST FLOOR WINDOW AND
SIDING ALTERATION DETAIL
7. #14



CALIF. S.O. R.R. DEPOT

PHOTO #11

1. STATION AND GENERAL OFFICE
CALIFORNIA SOUTHERN RAILROAD
NATIONAL CITY CA
2. SAN DIEGO COUNTY CA
3. DOLORES MELLON
4. APRIL 6, 1994
5. ARCHITECT M W DONALDSON FAIA INC
530 SIXTH AVE SAN DIEGO CA 92101
6. NORTH AND EAST FACADES FACING
SOUTHWEST. WATER TOWER AND ONE
STORY ADDITION DETAIL
7. #15



CALIF. SO. R R DEPOT

PHOTO # 12

1. STATION AND GENERAL OFFICE
CALIFORNIA SOUTHERN RAILROAD
NATIONAL CITY CA
2. SAN DIEGO COUNTY CA
3. DOLORIS MELLON
4. APRIL 6, 1994
5. ARCHITECT M W DONALDSON FATA INC
530 SIXTH AVE SAN DIEGO CA 92101
6. INTERIOR PHOTO OF BUILDING'S ORIGINAL
NORTH FACADE, INCLUDING BAGGAGE ROOM
ENTRANCE, NOW ENCLOSED.
7. #16



CALIF. So. R. R. Depot
PHOTO #13

1. STATION AND GENERAL OFFICE
CALIFORNIA SOUTHERN RAILROAD
NATIONAL CITY CA
2. SAN DIEGO COUNTY CA
3. DOLORES MELLON
4. APRIL 6, 1994
S&T 81-NIINN 28-18 200
5. ARCHITECT M W DONALDSON FATI INC
530 SIXTH AVE SAN DIEGO CA 92101
6. INTERIOR PHOTO OF BUILDING'S ORIGINAL
NORTH FACADE, INCLUDING ORIGINAL
PASSENGER ENTRANCE DOORWAY
7. #17



1. STATION AND GENERAL OFFICE
CALIFORNIA SOUTHERN RAILROAD
NATIONAL CITY CA

2. SAN DIEGO COUNTY, CA

3. EDWARD GOHLICH

4. DECEMBER 1, 1995

5. EDWARD GOHLICH PHOTOGRAPHY

10101 COUNTRY VIEW ROAD

LA MESA CA 91941

6. INTERIOR PHOTO OF THE ORIGINAL STAIRWAY.
NOTE THE ADDITION OF WOOD PANELING.

7. #18



CALIF. SO. R. R. DEPOT

PHOTO #15

1. STATION AND GENERAL OFFICE
CALIFORNIA SOUTHERN RAILROAD
NATIONAL CITY CA
2. SAN DIEGO COUNTY CA
3. DOLORES MELLON
4. APRIL 6, 1994
5. ARCHITECT M W DONALDSON FAIA INC
530 SIXTH AVE SAN DIEGO CA 92101
6. INTERIOR PHOTO OF NORTHWEST ROOM, FORMERLY
THE PASSENGER WAITING ROOM. NOTE THE WOOD
COVERING THE ORIGINAL GLASS TRANSOMS.
7. #19



CALIFORNIA
SOUTHERN
R.R. CO.



RAYMOND
&

WILSHIRE

SAN FRANCISCO.

CALIF. SO. R. R. DEPOT
PHOTO #16

1. STATION AND GENERAL OFFICE
CALIFORNIA SOUTHERN RAILROAD
NATIONAL CITY CA
2. SAN DIEGO COUNTY CA
3. DOLORES MELLON
4. APRIL 6, 1994
5. ARCHITECT M W DONALDSON FAIA INC
530 SIXTH AVE SAN DIEGO CA 92101
6. RAILROAD SAFE LOCATED ON FIRST FLOOR
7. #20



CALIFORNIA
SOUTHERN
R.R. CO

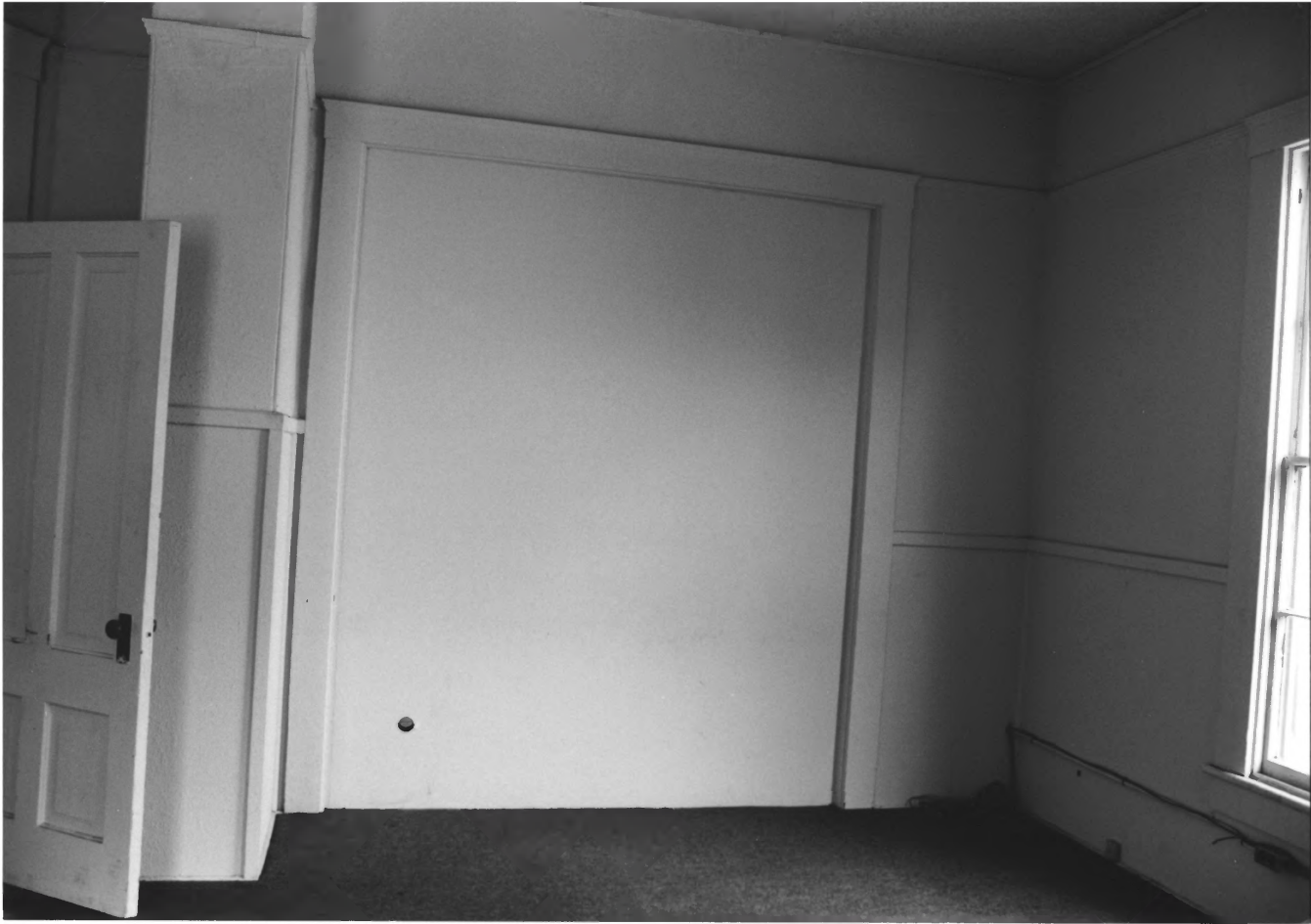
CALIF. SO. R.R. Depot
PHOTO #17

1. STATION AND GENERAL OFFICE
CALIFORNIA SOUTHERN RAILROAD
NATIONAL CITY CA
2. SAN DIEGO COUNTY CA
3. DOLORES MELLON
4. APRIL 6, 1994
5. ARCHITECT M W DONALDSON FAIA INC
530 SIXTH AVE SAN DIEGO CA 92101
6. RAILROAD SAFE
7. #21



CALIF. SO. R. R. DEPOT -
PHOTO # 18

1. STATION AND GENERAL OFFICE
CALIFORNIA SOUTHERN RAILROAD
NATIONAL CITY CA
2. SAN DIEGO COUNTY CA
3. DOLORES MELLON
4. APRIL 6, 1994
5. ARCHITECT M W DONALDSON FATA INC
530 SIXTH AVE SAN DIEGO CA 92101
6. SECOND FLOOR SOUTH SIDE OF STRUCTURE.
NOTE ORIGINAL FIREPLACE
7. # 22



CALIF. SO R. R. DEPOT

1. STATION AND GENERAL OFFICE
CALIFORNIA SOUTHERN RAILROAD
NATIONAL CITY CA

2. SAN DIEGO COUNTY CA

3. DOLORES MELLON

4. APRIL 6, 1994

005 81-04 NN11N 109

5. ARCHITECT M W DONALDSON FATIA

530 SIXTH AVE SAN DIEGO CA 92101

6. NORTHEAST SECOND FLOOR INTERIOR FACING WEST
NOTE DOORWAY NOW ENCLOSED.

7. # 23



CALIF So. R. R. DEPOT

PHOTO # 20

1. STATION AND GENERAL OFFICE
CALIFORNIA SOUTHERN RAILROAD
NATIONAL CITY CA

2. SAN DIEGO COUNTY CA

3. DOLORES MELLON

009 81-04 NN1NN 109

4. APRIL 6, 1994

5. ARCHITECT M W DONALDSON FAIA INC
530 SIXTH AVE SAN DIEGO CA 92101

6. SECOND FLOOR STATION-MASTER'S RESIDENCE.
NOTE GLASS TRANSOM COVERED BY WOOD

7. #24



CALIF. S. R. R. Depot
PHOTO # 21

1. STATION AND GENERAL OFFICE
CALIFORNIA SOUTHERN RAILROAD
NATIONAL CITY CA
2. SAN DIEGO COUNTY CA
3. DOLORES MELUN
4. APRIL 6, 1994
5. ARCHITECT M W DONALDSON FAIA INC
530 SIXTH AVE SAN DIEGO CA 92101
6. SECOND FLOOR NORTHEAST CORNER.
NOTE THE ADDITION OF THE RESTAURANT
DUMB-WAITER

7. #25



CALIF SO. R.R. DEPOT
PHOTO #22

1. STATION AND GENERAL OFFICE
CALIFORNIA SOUTHERN RAILROAD
NATIONAL CITY CA
2. SAN DIEGO COUNTY CA
3. DOLores MELLON
4. APRIL 6, 1994 SET NUMBER 40-18 200
5. ARCHITECT M W DONALDSON FAIA INC
530 SIXTH AVE SAN DIEGO CA 92101
6. SECOND FLOOR INTERIOR FACING SOUTHWEST
7. #26



1. STATION AND GENERAL OFFICE
CALIFORNIA SOUTHERN RAILROAD
NATIONAL CITY CA
2. SAN DIEGO COUNTY CA
3. EDWARD GOHLICH
4. DECEMBER 1, 1995
5. EDWARD GOHLICH PHOTOGRAPHY
10101 COUNTRY VIEW ROAD
LA MESA CA 91941
6. SOUTH AND WEST FACADES SHOWING BOX CARS
7. # 27