



DOLF

AUG 1 6 1979

Mount Pisgah A.M.E. Church -
Greenwood County - Julie Burr,
April, 1979-S.C. Dept. of Archives
& History - Front (NE) facade and
partial view of right (SE) facade.

JUL 10 1979

1067



D&E
AUG 16 1979

Mount Pisgah A.M.E. Church -
Greenwood County - Ruth LaForge,
March, 1979 - Upper Savannah
Council of Governments - Right
(SE) facade.

JUL 10 1979 # 2 of 7

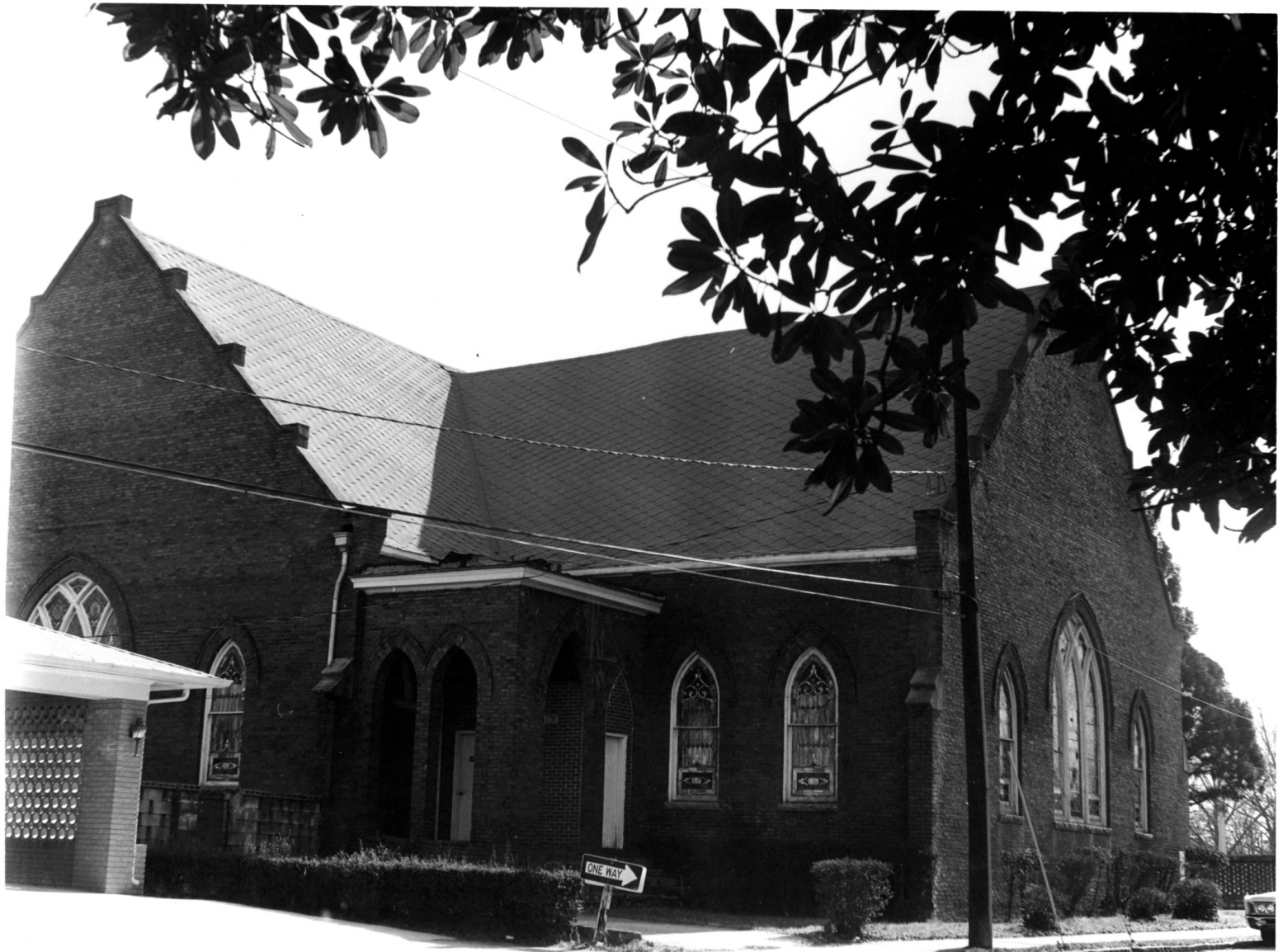


Mount Pisgah A.M.E. Church JUL 10 1979

Photo # 3 of 7

Greenwood County - Julie Burr,
April, 1979 - S.C. Dept. of Archives
& History - Rear (SW) facade and
partial view of left (NW) facade.

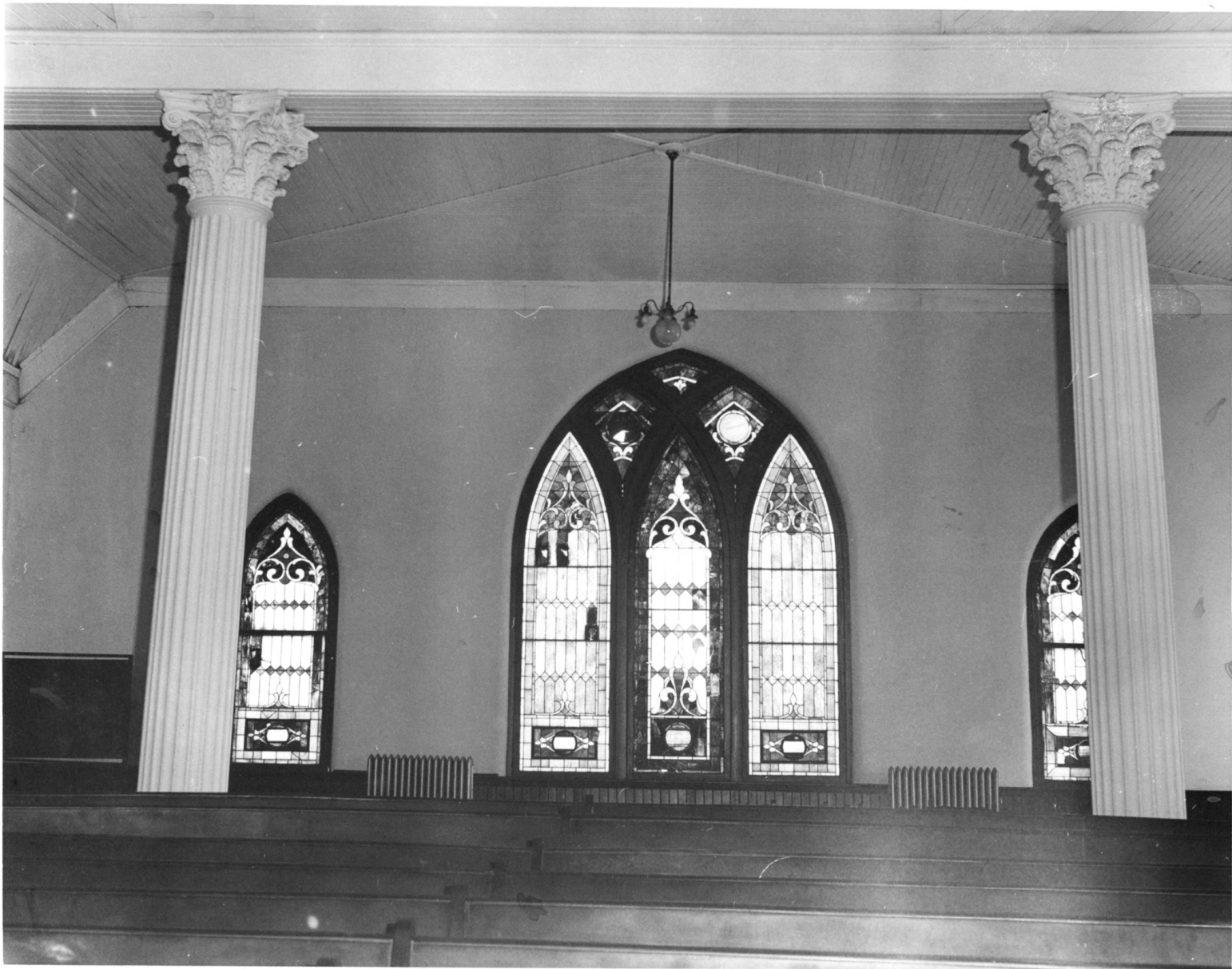
^{DOE}
AUG 16 1979



AUG 16^{DOE} 1979

Mount Pisgah A.M.E. Church -
Greenwood County - Ruth LaForge,
March, 1979 - Upper Savannah
Council of Governments - Front
(NE) facade and partial view of
left (NW) facade. # 4887

MOUNT
PISGAH
A.M.E.
CHURCH



DOE

AUG 16 1979

Mount Pisgah A.M.E. Church -
Greenwood County - Ruth LaForge,
March, 1979 - Upper Savannah
Council of Governments - Interior,
view (NE) of nave, # 5 of 7
JUL 10 1979

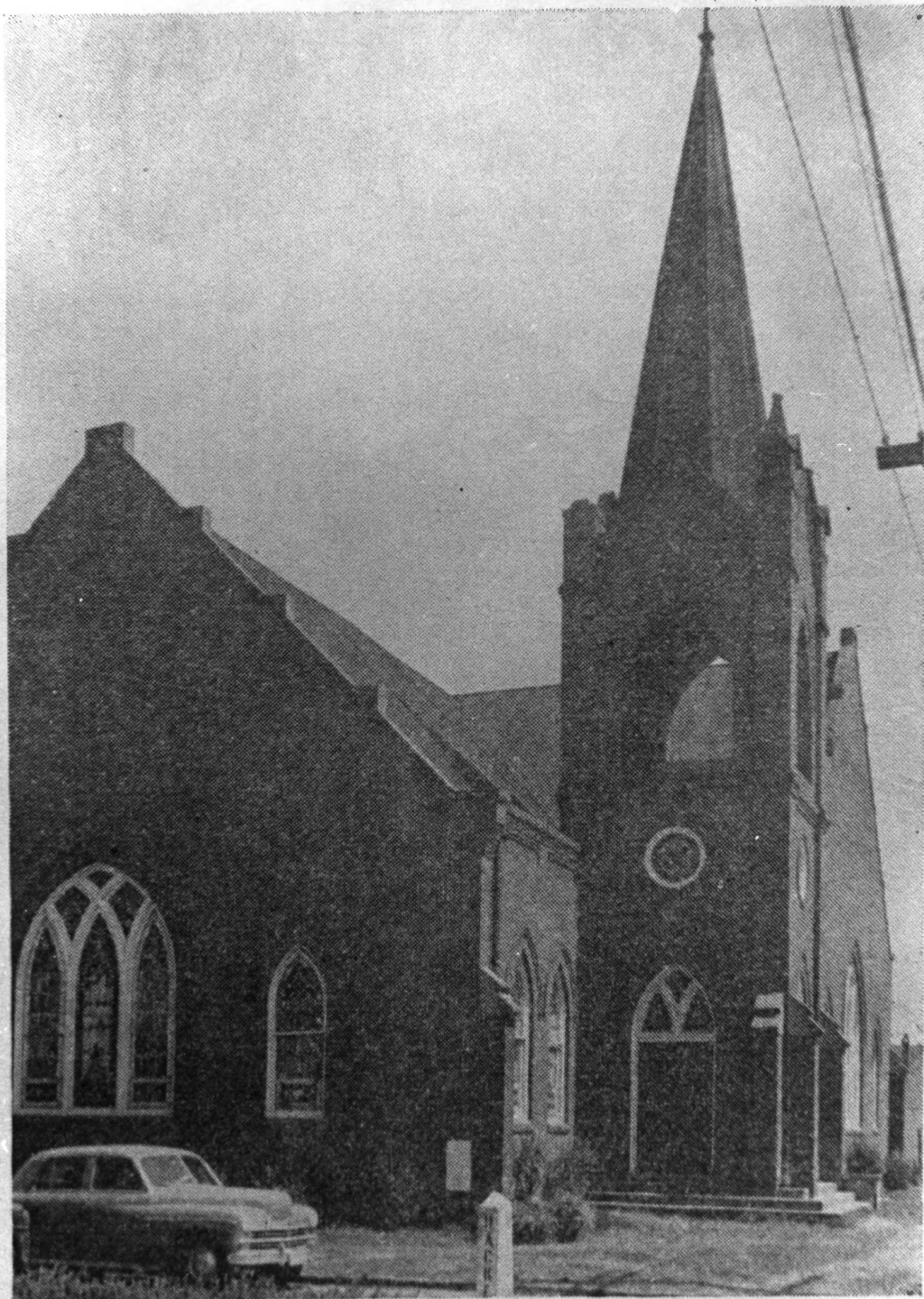


D&E

AUG 16 1979

Mount Pisgah A.M.E. Church -
Greenwood County - Ruth LaForge,
March, 1979 - Upper Savannah
Council of Governments - Interior,
view (SW) of chancel. # 6 of 7

JUL 10 1979



MT. PISGAH A. M. E. CHURCH

DOE
AUG 16 1979

JUL 10 1979
Mount Pisgah A.M.E. Church-
Greenwood County, S.C. -Julia Hill,
May, 1979--from 1950 photo in church
anniversary program--Partial view of
Front(NE) & Right(SE) facades #787