

UNITED STATES DEPARTMENT OF THE INTERIOR
NATIONAL PARK SERVICE

NATIONAL REGISTER OF HISTORIC PLACES
EVALUATION/RETURN SHEET

REQUESTED ACTION: NOMINATION

PROPERTY NAME: Johnson City Warehouse and Commerce Historic District (Boundary Decrease)

MULTIPLE NAME:

STATE & COUNTY: TENNESSEE, Washington

DATE RECEIVED: 10/17/14 DATE OF PENDING LIST: 11/12/14
DATE OF 16TH DAY: 11/28/14 DATE OF 45TH DAY: 12/03/14
DATE OF WEEKLY LIST:

REFERENCE NUMBER: 14000998

REASONS FOR REVIEW:

APPEAL: N DATA PROBLEM: N LANDSCAPE: N LESS THAN 50 YEARS: N
OTHER: N PDIL: N PERIOD: N PROGRAM UNAPPROVED: N
REQUEST: N SAMPLE: N SLR DRAFT: N NATIONAL: N

COMMENT WAIVER: N

ACCEPT RETURN REJECT 12.2.14 DATE

ABSTRACT/SUMMARY COMMENTS:

Entered in
The National Register
of
Historic Places

RECOM./CRITERIA Accept Boundary Decrease
REVIEWER Edson Beall DISCIPLINE History
TELEPHONE _____ DATE 12.2.14

DOCUMENTATION see attached comments Y/N see attached SLR Y/N

If a nomination is returned to the nominating authority, the nomination is no longer under consideration by the NPS.

United States Department of the Interior
National Park Service

National Register of Historic Places Continuation Sheet

Section number

 N/A

Page

 1

Johnson City Warehouse and Commerce Historic
District (Boundary Decrease)
Washington County, Tennessee

The Johnson City Warehouse and Commerce Historic District was listed in the National Register of Historic Places on July 17, 2003 for its local significance in commerce from 1900-1953. The original nomination listed twenty-six contributing buildings: one- and two part- warehouses, professional buildings and specialty stores along with one non-contributing resource. Of the twenty-six contributing resources, seven were demolished in October of 2012 by the City of Johnson City due to flood plain issues and the properties will become a storm water retention basin. The demolished properties are within the city block bounded on the north by West King Street, on the west by Montgomery Street, on the east by North Boone Street and on the south by West Market Street (also known as TN-91). As a result of the demolitions, the boundaries of the listed historic district should be altered to remove the portion mentioned outlined above. The following includes a list of inventory numbers with addresses that are the demolished properties within the boundary decrease area:

Resource #1	107 North Boone Street (formerly 349)
Resource #19	200 West Market Street (formerly 375)
Resource #20	204 West Market Street (formerly 352)
Resource #21	210 West Market Street (formerly 353)
Resource #22	214 West Market Street (formerly 355)
Resource #26	100-102 Montgomery Street (formerly 357a)
Resource #27	104 Montgomery Street (formerly 357b)

The remaining nineteen contributing buildings within the Johnson City Warehouse and Commerce Historic retain sufficient integrity to remain listed in the National Register.

Claudette Stager, Deputy State Historic Preservation Officer

Date

United States Department of the Interior
National Park Service

National Register of Historic Places Continuation Sheet

Section number N/A Page 2

Johnson City Warehouse and Commerce Historic District (Boundary Decrease)
Washington County, Tennessee

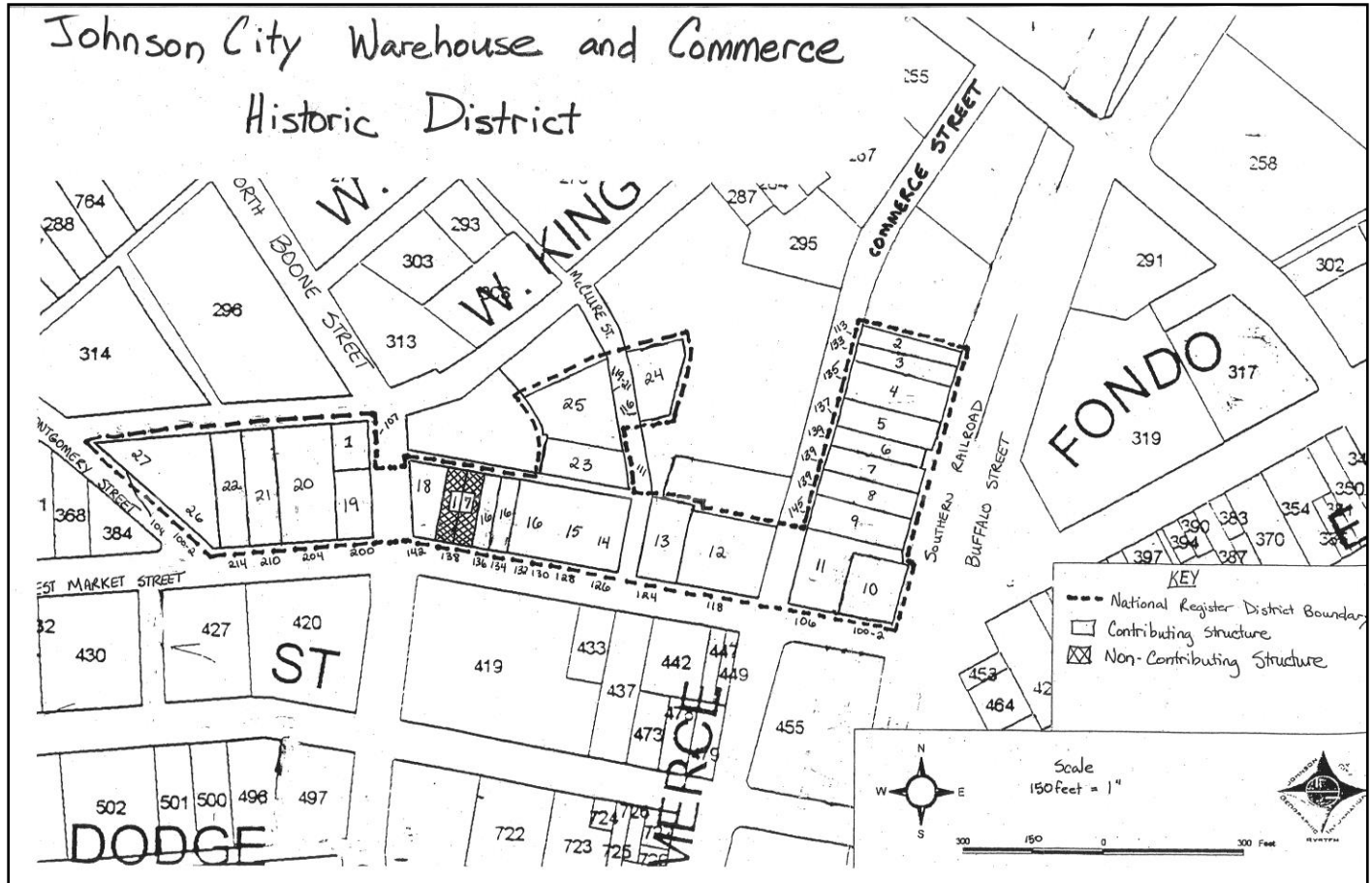


Figure 1: Original Boundary for the Johnson City Warehouse and Commerce Historic District

United States Department of the Interior
National Park Service

National Register of Historic Places Continuation Sheet

Section number N/A Page 3

Johnson City Warehouse and Commerce Historic
District (Boundary Decrease)
Washington County, Tennessee



Figure 2: Streetscape of West Market Street in 2003. View to the west.



Figure 3: Streetscape of North Boone Street in 2003. View to the north-northwest.

United States Department of the Interior
National Park Service

National Register of Historic Places Continuation Sheet

Section number N/A Page 4

Johnson City Warehouse and Commerce Historic
District (Boundary Decrease)
Washington County, Tennessee



Figure 4: 200 West Market Street in 2003. View is to the north-northwest.



Figure 5: 204 West Market Street in 2003. View to the north.

United States Department of the Interior
National Park Service

National Register of Historic Places Continuation Sheet

Section number N/A Page 5

Johnson City Warehouse and Commerce Historic
District (Boundary Decrease)
Washington County, Tennessee



Figure 6: 210 West Market Street in 2003. View is to the north.



Figure 7: 214 West Market Street in 2003. View is to the North.

United States Department of the Interior
National Park Service

National Register of Historic Places Continuation Sheet

Section number N/A Page 6

Johnson City Warehouse and Commerce Historic
District (Boundary Decrease)
Washington County, Tennessee



Figure 8: 200 West Market Street in 2003. View is to the east.



Figure 9: Building at the corner of King and Montgomery Streets in 2003. View is to the east.

United States Department of the Interior
National Park Service

National Register of Historic Places Continuation Sheet

Section number N/A Page 7

Johnson City Warehouse and Commerce Historic
District (Boundary Decrease)
Washington County, Tennessee



Figure 11: Rear elevations on King Street for the 204 and 210 West Market and the north elevation of 107 North Boone Street in 2003. View is to the east.



Figure 12: 107 North Boone Street in 2003. View is to the southwest.

United States Department of the Interior
National Park Service

National Register of Historic Places Continuation Sheet

Section number N/A Page 8

Johnson City Warehouse and Commerce Historic District (Boundary Decrease)
Washington County, Tennessee

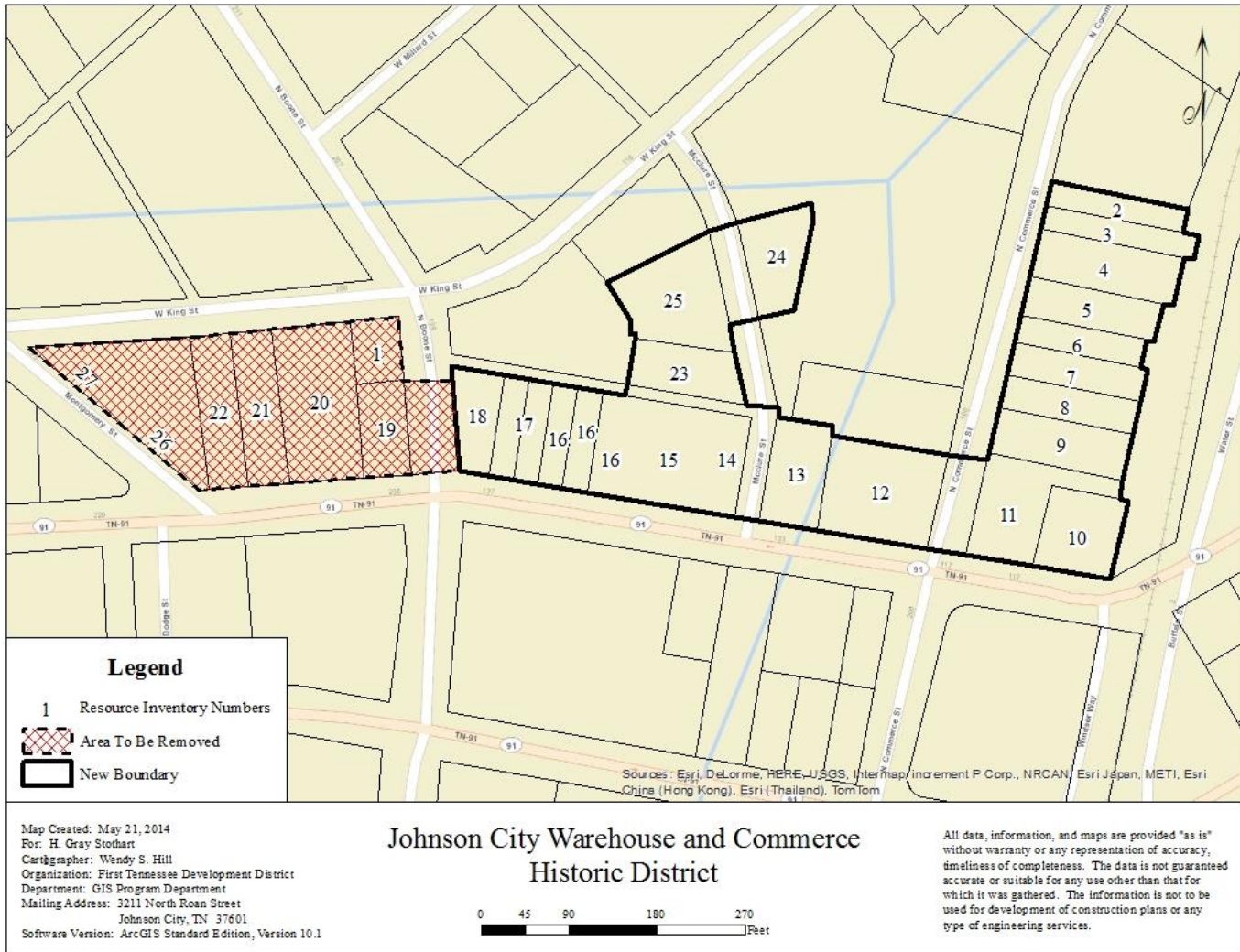


Figure 13: New boundary map showing the decrease area that is being removed.

United States Department of the Interior
National Park Service

National Register of Historic Places Continuation Sheet

Section number N/A Page 9

Johnson City Warehouse and Commerce Historic
District (Boundary Decrease)
Washington County, Tennessee



Figure 14: View to the east along the south side of West King Street which originally had the rear elevations of the frontages along West Market Street. Photo taken from the northeast corner of West King Street and North Boone Street. Photo dated 10/16/2012



Figure 15: View to the east of the original east elevation of 107 North Boone Street. Photo dated 10/16/2012.

United States Department of the Interior
National Park Service

National Register of Historic Places Continuation Sheet

Section number N/A Page 10

Johnson City Warehouse and Commerce Historic
District (Boundary Decrease)
Washington County, Tennessee



Figure 16: View to the north of the south elevation of 200 West Market Street. Photo dated 10/16/2012.



Figure 17: View to the northwest of the locations of 204, 210, 24 West Market Street, south facades.
Photo dated 10/16/2012.

United States Department of the Interior
National Park Service

National Register of Historic Places Continuation Sheet

Section number N/A Page 11

Johnson City Warehouse and Commerce Historic
District (Boundary Decrease)
Washington County, Tennessee



Figure 18: Demolition of 200 West Market Street. View is to the south of the rear (north) elevation.
Photo dated 10/16/2012.



Figure 19: Demolition of 200 West Market Street. View is to the northwest of the south façade.
Photo dated 10/16/2012.

United States Department of the Interior
National Park Service

National Register of Historic Places Continuation Sheet

Section number N/A Page 12

Johnson City Warehouse and Commerce Historic
District (Boundary Decrease)
Washington County, Tennessee



Figure 20: View to the south of the rubble of the resources. Photo dated 10/16/2012.



Figure 21: View to the southeast of the previous location of 104 Montgomery Street. Photo dated 10/16/2012.

United States Department of the Interior
National Park Service

National Register of Historic Places Continuation Sheet

Section number N/A Page 13

Johnson City Warehouse and Commerce Historic
District (Boundary Decrease)
Washington County, Tennessee



Figure 22: View to the south and west of the empty block along West King Street. Photo dated 12/06/13.

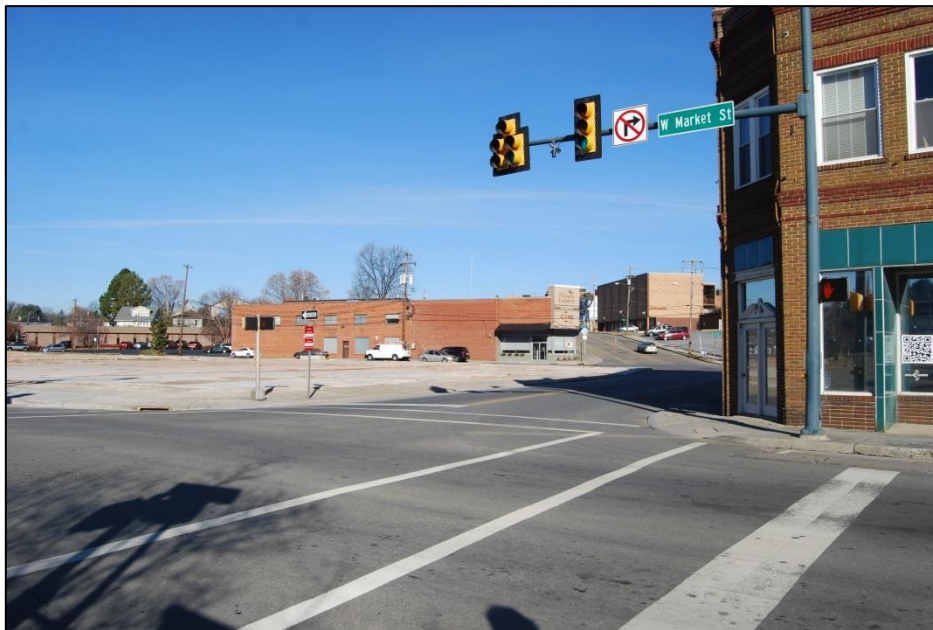


Figure 23: View to the north of the former location of 200 West Market Street and 107 North Boone Street.
Photo dated 12/06/13.

United States Department of the Interior
National Park Service

National Register of Historic Places Continuation Sheet

Section number N/A Page 14

Johnson City Warehouse and Commerce Historic
District (Boundary Decrease)
Washington County, Tennessee



Figure 24: View to the west of the demolished block. Photo dated 12/06/2013.



TENNESSEE HISTORICAL COMMISSION
STATE HISTORIC PRESERVATION OFFICE
2941 LEBANON ROAD
NASHVILLE, TENNESSEE 37243-0442
OFFICE: (615) 532-1550
E-mail: Claudette.Stager@tn.gov
(615) 770-1089
www.tnhistoricalcommission.org



September 26, 2014

Carol Shull
Keeper of the National Register
National Park Service
National Register Branch
1201 Eye Street NW
8th floor
Washington, DC 20005

Dear Ms. Shull:

Enclosed please find the documentation to reduce the boundary of the Johnson City Warehouse and Commerce Historic District currently listed on the National Register of Historic Places. The enclosed disk contains the true and correct copy of the additional documentation requesting the decrease of the National Register boundary of the Johnson City Warehouse and Commerce Historic due to demolition of seven of the originally included buildings.

If you have any questions or if more information is needed, contact Peggy Nickell at 615/532-1550, extension 128 or Peggy.Nickell@tn.gov.

Sincerely,

Claudette Stager
Deputy State Historic Preservation Officer

Cs:pn

Enclosure (3)