



KREUZER RANCH, 167 Kreuzer Ln., Napa, CA 94558

Photographer: unknown

Date: c. 1910

FEB 11 1982

Neg. Loc.: Caldwell, P.O. Box J, Yountville, CA

View: Kreuzer Ranch House, Northwest facade;

Photographer looking southeast

7/8.

JAN 12 1982



STATE	
California	
COUNTY	
Inyo	
FOR NPS USE ONLY	
ENTRY NUMBER	DATE
	DEC 31 1974

# NATIONAL REGISTER OF HISTORIC PLACES PROPERTY PHOTOGRAPH FORM

(Type all entries - attach to or enclose with photograph)

SEE INSTRUCTIONS

### 1. NAME

COMMON: **Eagle Borax Works**

AND/OR HISTORIC:

### 2. LOCATION

STREET AND NUMBER:

**Death Valley National Monument**

CITY OR TOWN:

**Death Valley**

STATE:

**California**

CODE

**06**

COUNTY:

**Inyo**

CODE

**027**

### 3. PHOTO REFERENCE

PHOTO CREDIT: **Robert V. Simmonds**

DATE OF PHOTO: **1971**

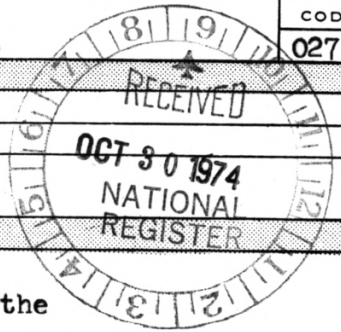
NEGATIVE FILED AT:

**Denver Service Center**

### 4. IDENTIFICATION

DESCRIBE VIEW, DIRECTION, ETC.

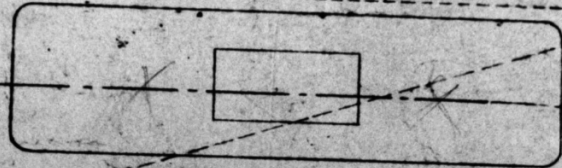
**Eagle Borax Works remains: the rise in the background is the site of the plant**





TONOPAH

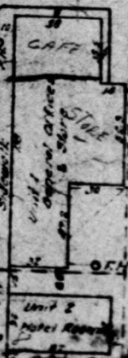
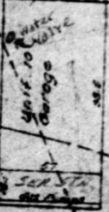
STATE HIGHWAY



DRIVEWAY

Unit 4 - Hotel Rooms

50 ROOMS IN HOTEL



BURNED

NOT TO SCALE WITHIN BOUNDARY AND DISTANCE UNLESS NOTED OTHERWISE

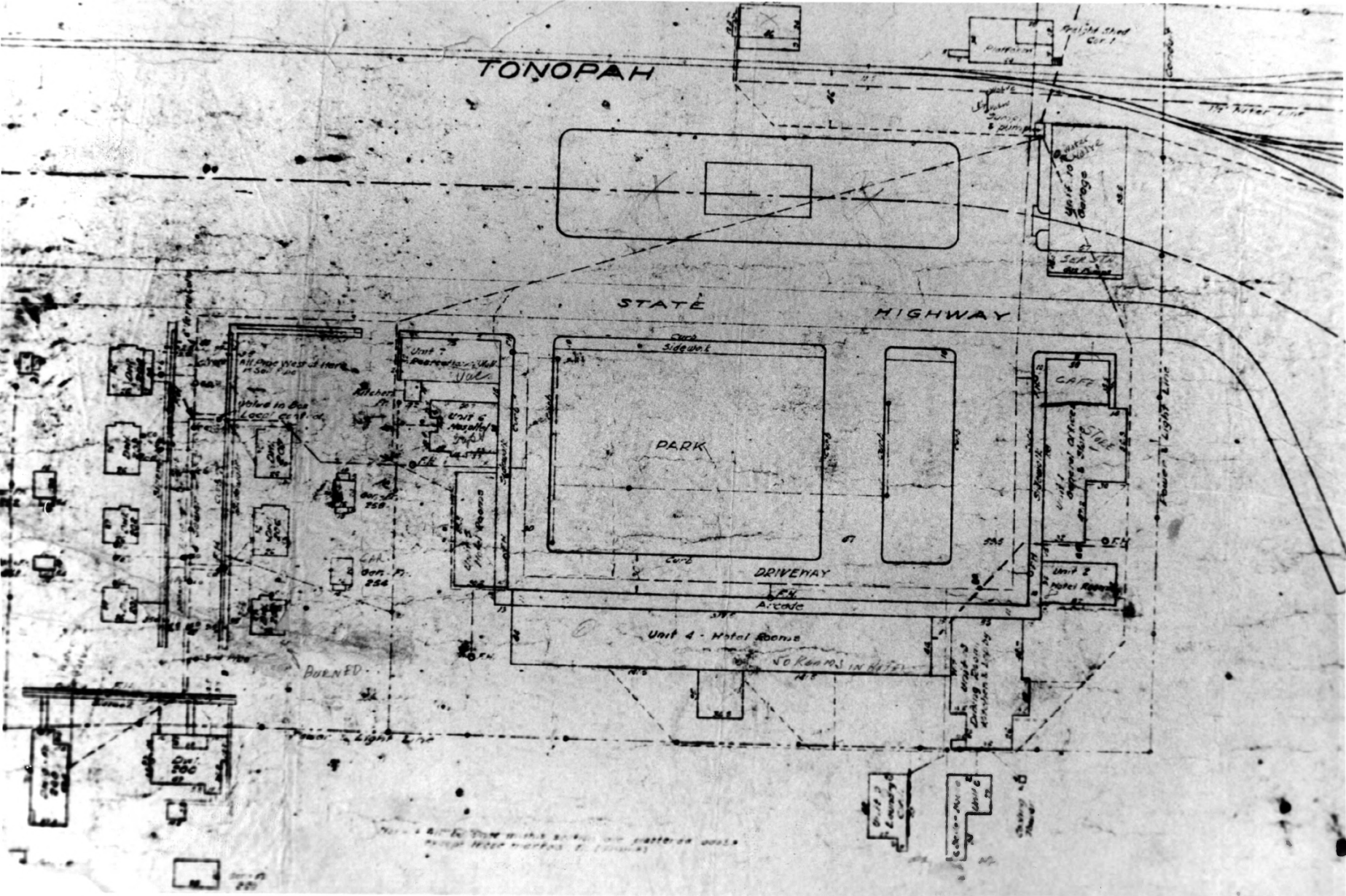
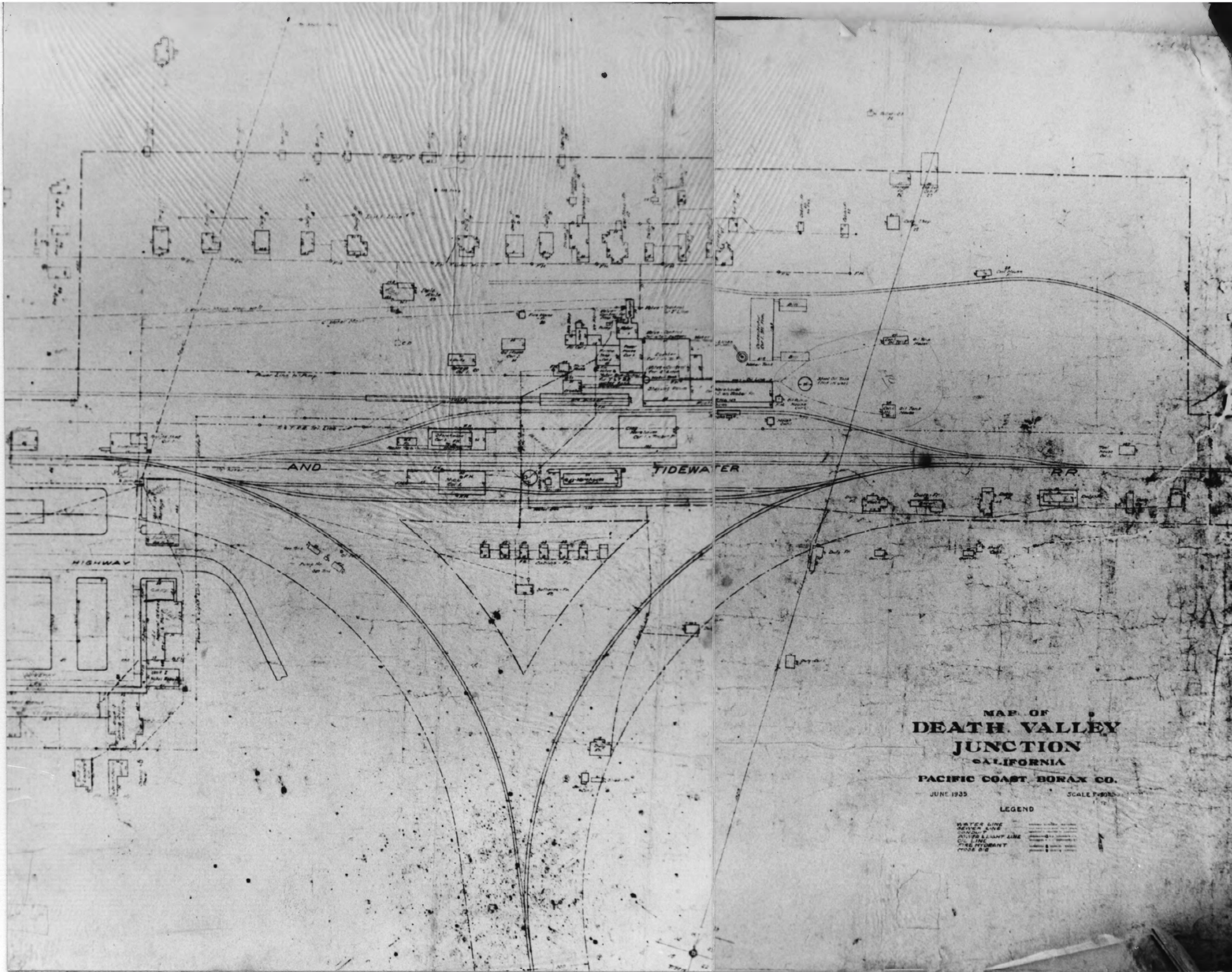


Figure 1-Sect. of 1935 Survey  
Death Valley Junction Hist. District  
Hwy. 127, Death Valley Jct., Inyo CA  
Marc Appleton *Co.*  
April 26, 1980 ~~SEP~~ 2 1980  
Death Valley Junction, CA 92328  
Photograph # 1 of 42





MAP OF  
**DEATH VALLEY  
 JUNCTION**  
 CALIFORNIA

PACIFIC COAST BORAX CO.  
 JUNE 1935 SCALE 1"=500'

LEGEND

- WATER LINE
- SEWER LINE
- STORM
- WATER FLUM LINE
- SCALE LINE
- SETTLEMENT
- CRACKS



Figure 2 - Sect. of 1935 Survey  
Death Valley Junction Hist. District  
Hwy. 127, Death Valley Jct., Inyo CA  
Marc Appleton  
April 26, 1980  
Death Valley Junction, CA 92328  
Photograph #2 of 42

SEP 2 1980

*Cal.*





Plate I-1 - Building # 1  
Death Valley Junction Hist. District  
Death Valley Junction, Inyo, CA  
Marc Appleton *Co.*  
April 26, 1980 SEP 2 1980  
Death Valley Junction, CA 92328  
Skylight over corridor - NE  
Photograph #3 of 42





Plate I-2 - Building # 6

Death Valley Junction Hist. District

Death Valley Junction, Inyo, CA

Marc Appleton

SEP 2 1980

April 26, 1980

Death Valley Junction, CA 92328

Lower - SW

Photograph #4 of 42



Plate I-3 - Building #1  
Hwy. 127, Death Valley Junction CA  
Death Valley Junction Hist. District  
Death Valley Junction, Inyo, CA  
Marc Appleton  
April 26, 1980 SEP 2 1980  
Death Valley Junction, CA 92328  
Collonade - West / Photo # 5 of 42

GROCERIES.

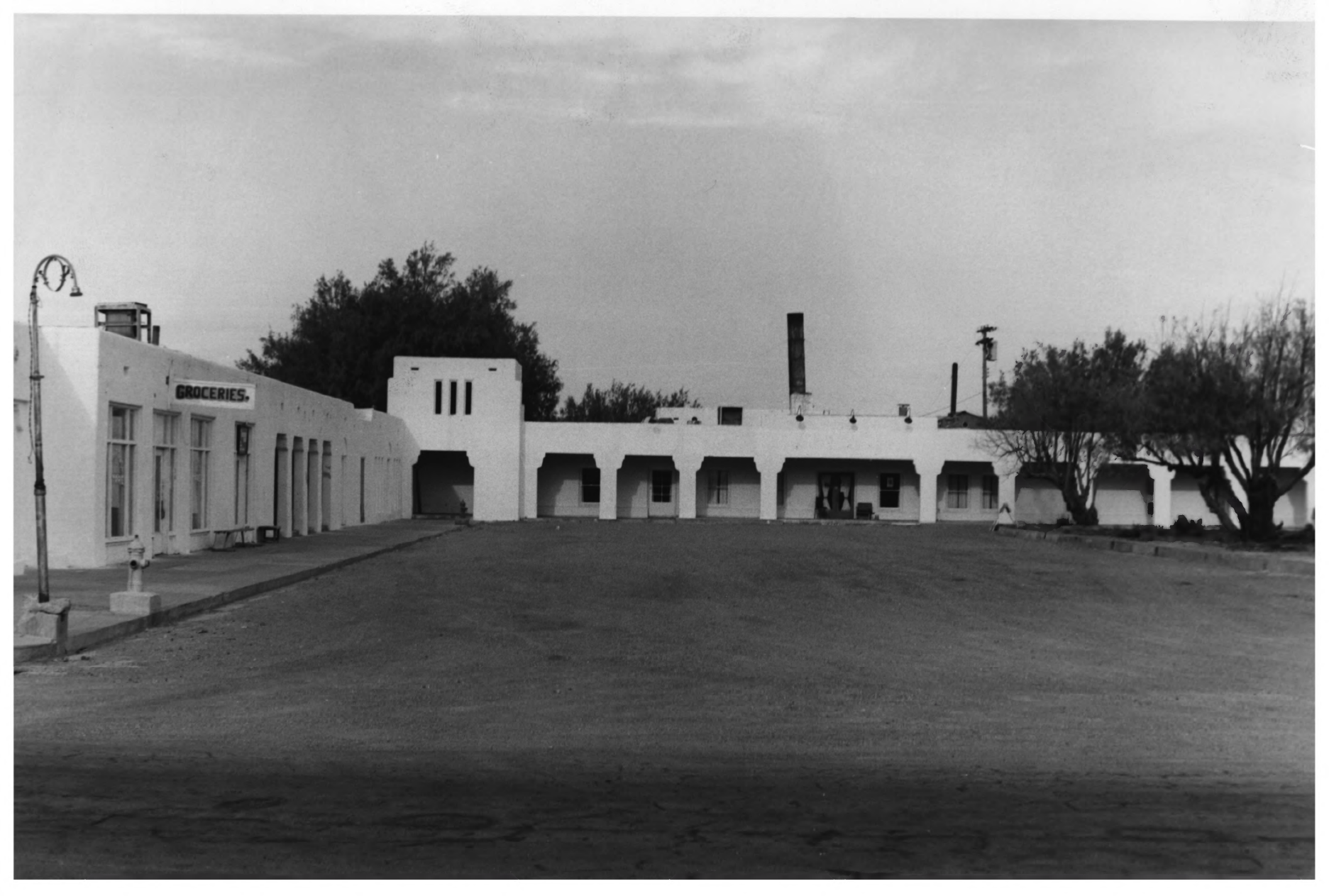


Plate I-4 - Building Group I  
Death Valley Junction Hist. District  
Hwy. 127, Death Valley Jct., Inyo CA  
Marc Appleton *Co.*  
April 26, 1980 SEP 2 1980  
Death Valley Junction, CA 92328  
SW Cor. of Bldg. Group  
Photo # 6 of 42





Plate I-5 - Building Group I  
Death Valley Junction Hist. District.  
Hwy. 127, Death Valley Jct., Inyo, CA  
Marc Appleton *CO.*  
April 26, 1980 SEP 2 1980  
Death Valley Junction, CA 92328  
Columnaded porch - North  
Photo # 7 of 42





Plate I-6 -Building Group I  
Death Valley Junction Hist. District  
Hwy. 127, Death Valley Jct., Inyo, CA  
Marc Appleton SEP 2 1980 Co.  
April 26, 1980  
Death Valley Junction, CA 92328  
View across Plaza - Northwest  
Photo # 8 of 42



Plate I-7 - Streetlight/Bldg. Gp. I  
Death Valley Junction Hist. District  
Hwy. 127, Death Valley Jct., Inyo, CA  
Marc Appleton SEP 2 1980 *Co.*  
April 26, 1980  
Death Valley Junction, CA 92328  
Streetlight standard - Northeast  
Photo # 9 of 42





NO PARKING

Plate I-8 - Building Group I  
Death Valley Junction Hist. District  
Hwy. 127, Death Valley Jct., Inyo, CA

Marc Appleton

April 26, 1980

SEP

2 1980

Death Valley Junction, CA 92328

Main Entrance of Hotel - West

Photo # 10 of 42





Plate I-9 - Building Group I  
Death Valley Junction Hist. District  
Hwy. 127, Death Valley Jct., Inyo, CA  
Marc Appleton *Co.*

April 26, 1980 SEP 2 1980  
Death Valley Junction, CA 92328  
Central corridor w/skylight - North  
Photo # 11 of 42

DEC 10 1980



Plate I-10 - Building Group I  
Death Valley Junction Hist. District  
HWY. 127, Death Valley Jct., Inyo, CA  
Marc Appleton

April 26, 1980 SEP 2 1980

Death Valley Junction, CA 92328

Interior - Dining Room - NorthEast

Photo # 12 of 42



Plate I-11 -Building Group I  
Death Valley Junction Hist. District  
Hwy. 127, Death Valley Jct., Inyo, CA  
Marc Appleton  
April 26, 1980 SEP 2 1980  
Death Valley Junction, CA 92328  
Interior - typical hotel bathroom  
Photo # 13 of 42





Plate I-12 - Building Group I  
Death Valley Junction Hist. District  
Hwy. 127, Death Valley Jct., Inyo, CA  
Marc Appleton *CD.*  
April 26, 1980 SEP 2 1980  
Death Valley Junction, CA 92328  
Interior - Mural by Marta Becket  
Photo # 14 of 42 /off corridor






Plate I-13 - Building Group I  
Death Valley Junction Hist. District  
Hwy. 127, Death Valley Jct., Inyo, CA  
Marc Appleton  SEP 2 1980  
April 26, 1980  
Death Valley Junction, CA 92328  
Porch of Dormitory Sect. - SouthEast  
Photo # 15 of 42



Plate I-14 - Building Group I  
Death Valley Junction Hist. District  
Hwy. 127, Death Valley Jct., Inyo, CA  
Marc Appleton <sup>CO.</sup> SEP 2 1980  
April 26, 1980  
Death Valley Junction, CA 92328 DEC 1 0  
South Dormitory - South  
Photo # 16 of 42







Plate I-15 - BuildingGroup I (No. 8&7)  
Death Valley Junction Hist. District  
Hwy. 127, Death Valley Jct., Inyo, CA  
T.B. Williams SEP 2 1980  
September 1979  
Death Valley Junction, CA 92328  
South wing of Bldg. Gp. - Southwest  
Photo # 17 of 42



Plate I-16 -Building Group I (No.8)  
Death Valley Junction Hist. District  
Hwy. 127, Death Valley Jct., Inyo, CA  
Marc Appleton  
April 26, 1980 SEP 2 1980 DEC 10 1  
Death Valley Junction, CA 92328  
Barber Shop and Company Office-South  
Photo # 18 of 42



AMARGOSA  
GENERAL  
STORE

THE  
DESERT  
RAT  
CITY  
BOUTIQUE  
DESERT JEWELS

KODAK  
OPEN  
197.11  
POST OFFICE

U.S.  
197.11  
DROP

OFFICE



Plate I-17 - Building Group I (No.8)  
Death Valley Junction Hist. District  
Hwy. 127, Death Valley Jct., Inyo, CA  
Marc Appleton  
April 26, 1980 SEP 2 1980  
Death Valley Junction, CA 92328  
Center Sect. South Wing of Gp. - South  
Photo # 19 of 42



Plate I-18 - Building Group I  
Death Valley Junction Hist. District  
Hwy. 127, Death Valley Jct., Inyo, CA  
Marc Appleton *Co.*  
April 26, 1980 SEP 2 1980  
Death Valley Junction, CA 92328  
Company Store - South (No.8)  
Photo # 20 of 42





Plate I-19 - Building Group I  
Death Valley Junction Hist. District  
Hwy. 127, Death Valley Jct., Inyo, CA  
Marc Appleton *Cal.*  
April 26, 1980 SEP 2 1980  
Death Valley Junction, CA 92328  
Interior - Cafe (No. 8)  
Photo # 21 of 42



Plate I-20 Building Group I  
Death Valley Junction Hist. District  
Hwy. 127, Death Valley Jct., Inyo, CA  
T.B. Williams *Co.*  
September 1979 SEP 2 1980  
Death Valley Junction, CA 92328  
North wing of Complex - Northwest  
Photo # 22 of 42





Plate I-21 - Building Group I  
Death Valley Junction Hist. District  
Hwy. 127, Death Valley Jct., Inyo, CA  
Marc Appleton *CO.*  
April 26, 1980 SEP 2 1980  
Death Valley Junction, CA 92328  
North Dormitory - North (No. 3)  
Photo # 23 of 42



Plate I-22 - Building Group I  
Death Valley Junction Hist. District  
Hwy. 127, Death Valley Jct., Inyo, CA  
Marc Appleton SEP 2 1980 *CD*  
April 26, 1980  
Death Valley Junction, CA 92328  
Dr's Residence & Hospital - East (No4)  
Photo # 24 of 42



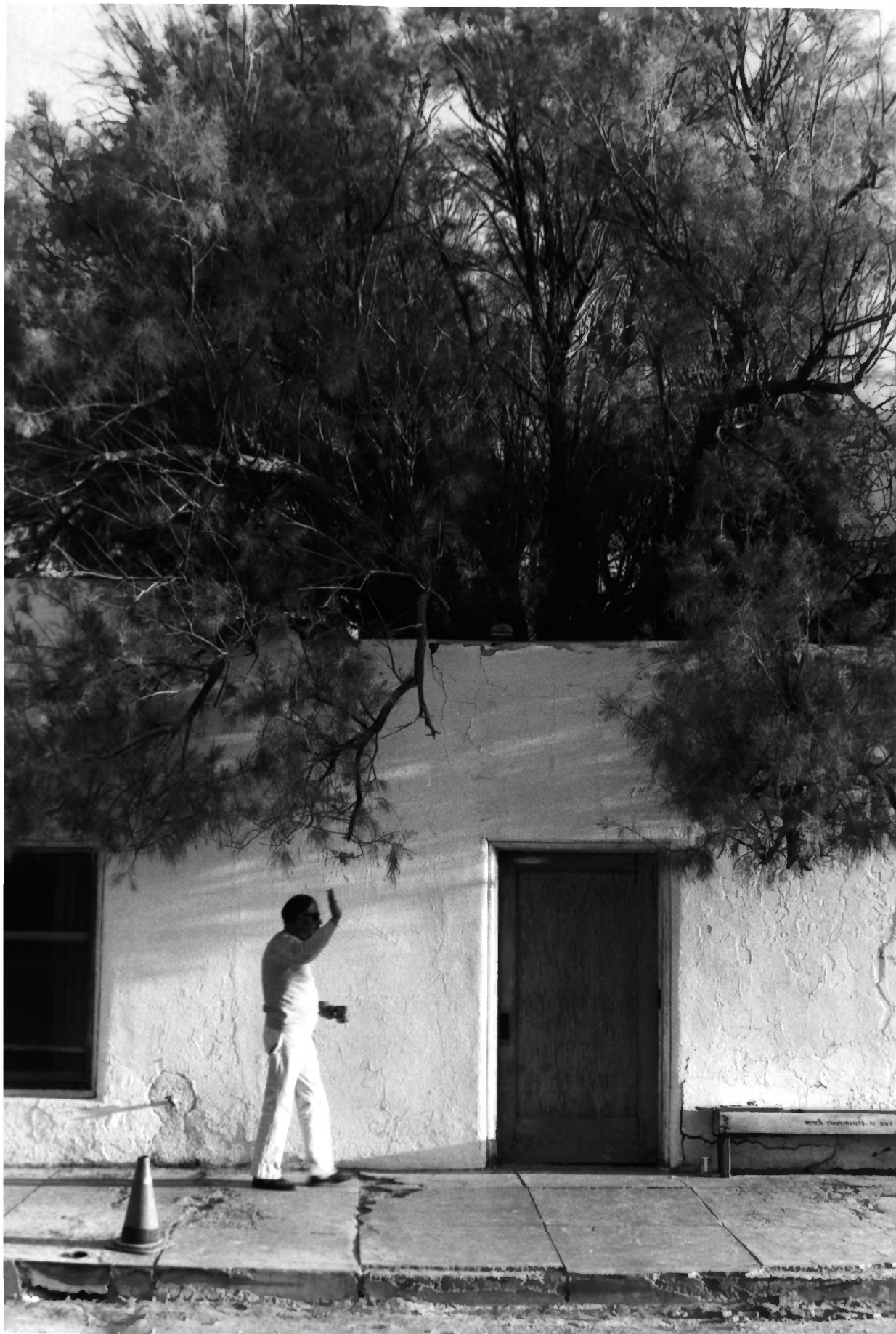




Plate I-23 - Building Group I  
Death Valley Junction Hist. District  
Hwy. 127, Death Valley Jct., Inyo, CA  
Marc Appleton SEP 2 1980 *cl.* DEC 10 1980  
April 26, 1980  
Death Valley Junction, CA 92328  
Patio Door - North (No. 4&5)  
Photo # 25 of 42



**OPERA HOUSE**

Plate I-24 - Building Group I (No5)  
Death Valley Junction Hist. District  
Hwy. 127, Death Valley Jct., Inyo, CA  
Marc Appleton  
April 26, 1980 SEP 2 1980  
Death Valley Junction, CA 92328  
Amargosa Opera House facade - North  
Photo # 26 of 42

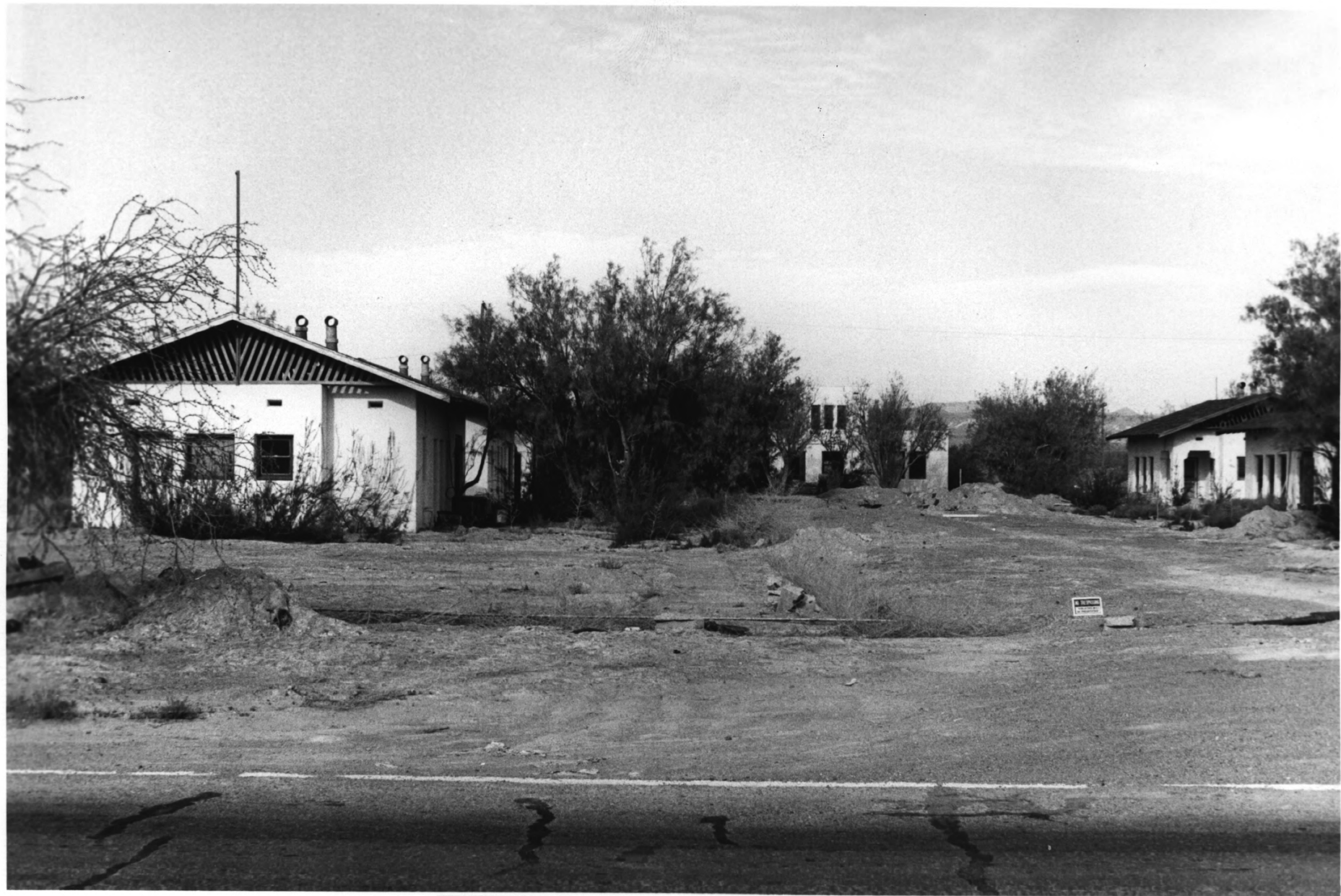




Plate II-1 - Building Group II  
Death Valley Junction Hist. District  
Hwy. 127, Death Valley Jct., Inyo, CA  
Marc Appleton

April 26, 1980

DEC 10 1980

Death Valley Junction, CA 92328  
Central avenue - West from Hwy. 127

Photo # 27 of 42

SEP 2 1980



Plate II-2 - Building Group II  
Death Valley Junction Hist. District  
Hwy. 127, Death Valley Jct., Inyo, CA  
Marc Appleton  
April 26, 1980  
Death Valley Junction, CA 92328  
Cottage (No. 13) - West  
Photo # 28 of 42  
DEC 10 1980  
SEP 2 1980





Plate II-3 - Building Group II  
Death Valley Junction Hist. District  
Hwy. 127, Death Valley Jct., Inyo, CA  
Marc Appleton  
April 26, 1980  
Death Valley Junction, CA 92328  
End view typical cottage - East  
Photo # 29 of 42

DEC 10 1980  
SEP 2 1980



Plate II-4 - Building Group II  
Death Valley Junction Hist. District  
Hwy. 127, Death Valley Jct., Inyo, CA  
Marc Appleton  
April 26, 1980  
Death Valley Junction, CA 92328  
Cottage (NO. 15) - Northeast  
Photo # 30 of 42

SEP 2 1980

*Ed.*

DEC 10 1980





Plate II-5 - Building Group II  
Death Valley Junction Hist. District  
Hwy. 127, Death Valley Jct., Inyo, CA  
Marc Appleton  
April 26, 1980 SEP 2 1980  
Death Valley Junction, CA 92328  
One-bedroom Cottage (No. 17&19) - NEast  
Photo # 31 of 42

DEC 10 1980



Plate II-6 - Building Group II  
Death Valley Junction Hist. District  
Hwy. 127, Death Valley Jct., Inyo, CA  
Marc Appleton *CO.*

April 26, 1980 SEP 2 1980

Death Valley Junction, CA 92328

Cottage (No. 17) - North

Photo # 32 of 42

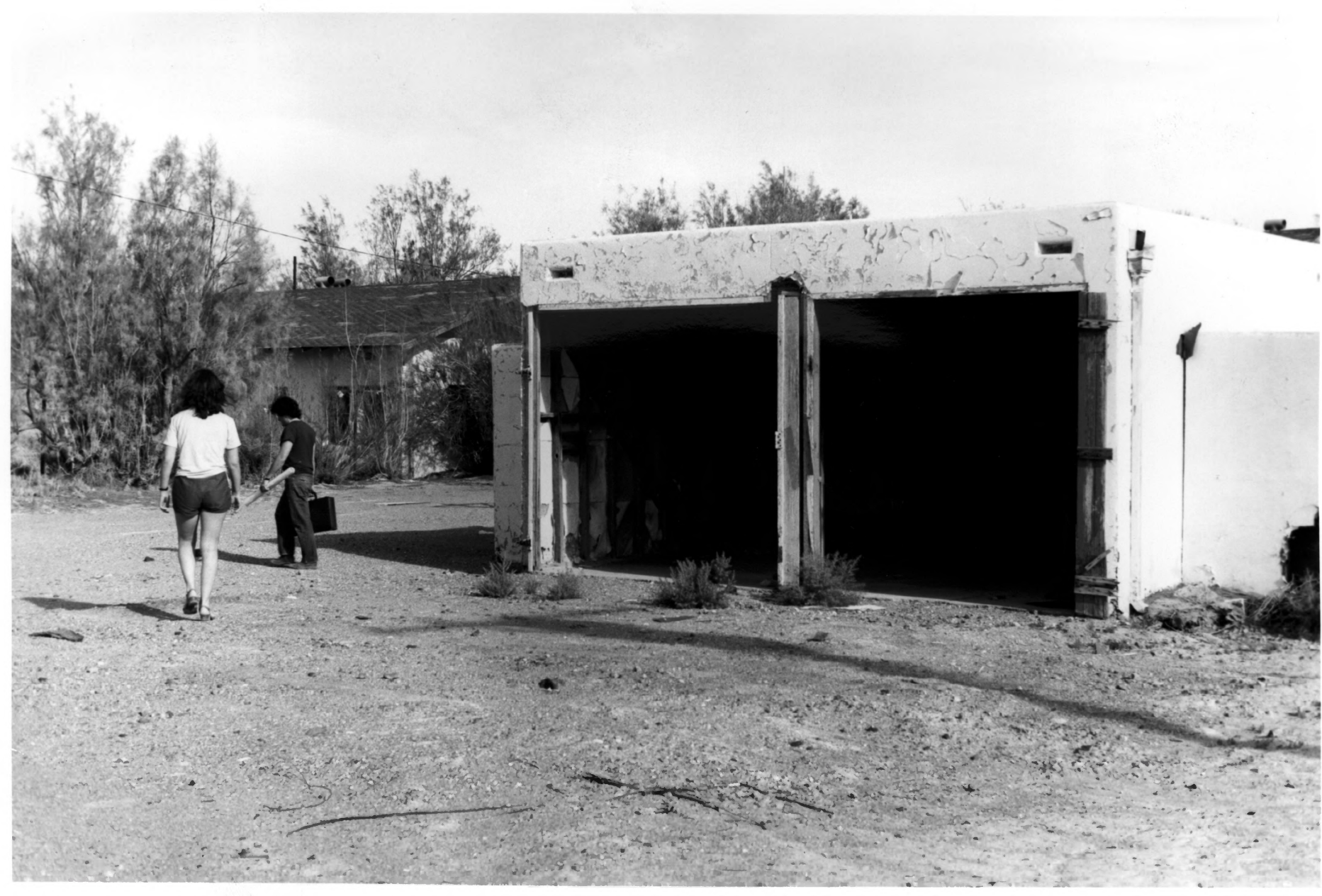




Plate II-7 - Building Group II  
Death Valley Junction Hist. District  
Hwy. 127, Death Valley Jct., Inyo, CA  
Marc Appleton *Co.*  
April 26, 1980 SEP 2 1980  
Death Valley Junction, CA 92328  
Two-car Garage (No. 23 (type) - NWest  
Photo # 33 of 42



Plate II-8 - Building Group II  
Death Valley Junction Hist. District  
Hwy. 127, Death Valley Jct., Inyo, CA  
Marc Appleton *CA.*  
April 26, 1980 SEP 2 1980  
Death Valley Junction, CA 92328  
Garage (No. 24-type) - Cottage (No. 19) - So  
Photo # 34 of 42 DEC 10 1980







Plate II-9 - Building Group II  
Death Valley Junction Hist. District  
Hwy. 127, Death Valley Jct., Inyo, CA  
Marc Appleton  
April 26, 1980  
Death Valley Junction, CA 92328  
Superintendent's Residence (No.20)-W  
Photo # 35 of 42

DEC 10 1980



Plate II-10- Building Group II  
Death Valley Junction Hist. District  
HWY. 127, Death Valley Jct., Inyo, CA  
Marc Appleton *Co.*  
April 26, 1980 SEP 2 1980  
Death Valley Junction, CA 92328  
Superintendent's Residence (No. 20)-Eas  
Photo # 36 of 42





Plate II-11 - Building Group II  
Death Valley Junction Hist. District  
Hwy. 127, Death Valley Jct., Inyo, CA

Marc Appleton

SEP 2 1980

April 26, 1980

Death Valley Junction, CA 92328

Residence (No. 22) - West

Photo # 37 of 42

DEC 10 1980



Plate M-1 - MISC. Structures  
Death Valley Junction Hist. District  
Hwy. 127, Death Valley Jct., Inyo, CA  
Marc Appleton *Co.*  
April 26, 1980  
Death Valley Junction, CA 92328  
Laundry ( No. 25 ) - Northeast  
Photo# 38 of 42

SEP 2 1980

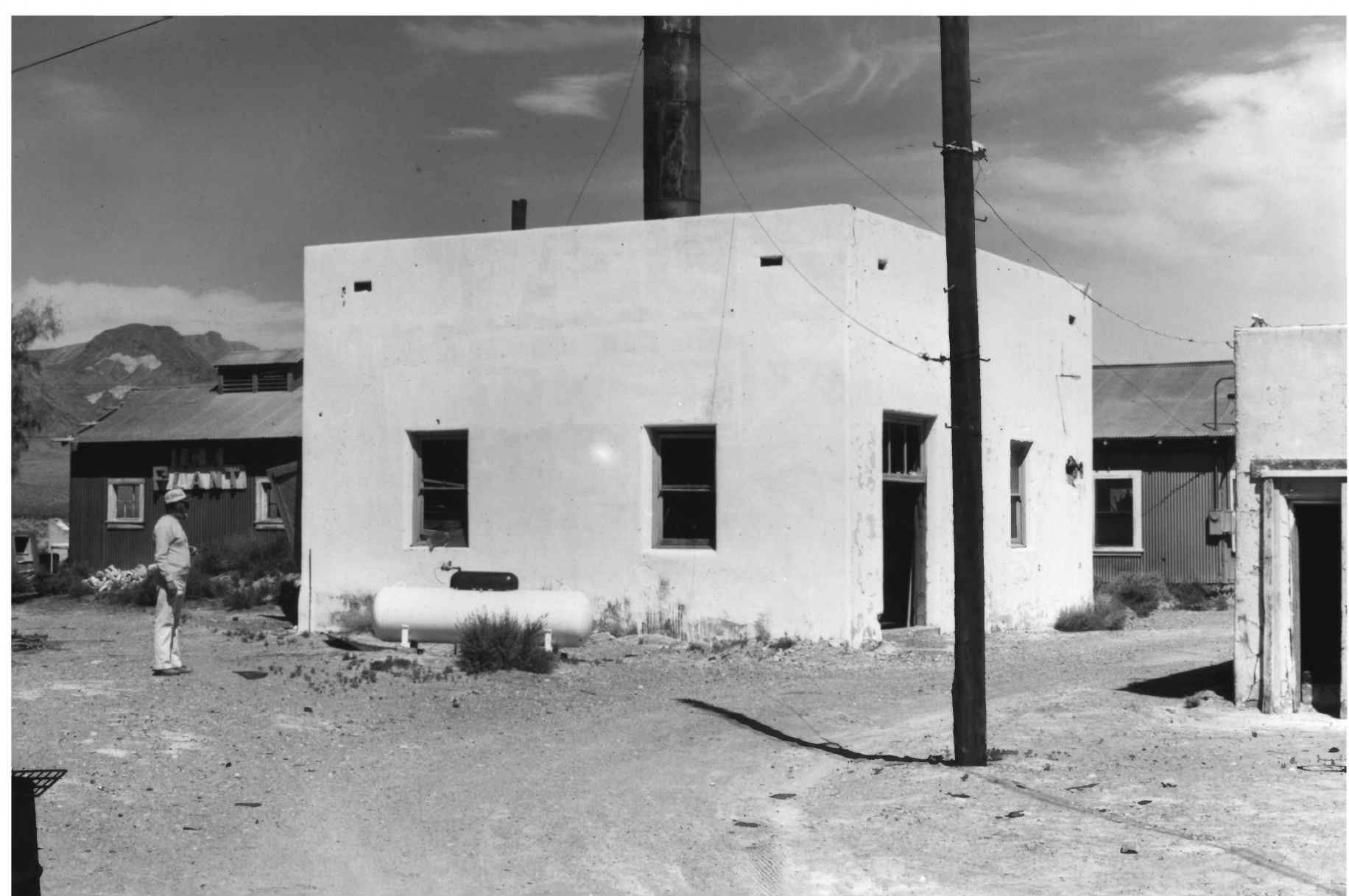




Plate M-2 - MISC. Structures

Death Valley Junction Hist. District

Hwy. 127, Death Valley Jct., Inyo, CA

Marc Appleton

DEC 10 1980

April 26, 1980

Death Valley Junction, CA 92328

Boiler House ( No.26) - Northwest

Photo # 39 of 42

CENT  
FRANT



Plate M-3 - MISC. Structures  
Death Valley Junction Hist. District  
Hwy. 127, Death Valley Jct., Inyo, CA  
Marc Appleton  
April 26, 1980  
Death Valley Junction, CA 92328  
Ice Plant (No. 26) - North  
Photo # 40 of 42

DEC 10 1980

SEP 2 1980

# DEATH VALLEY JUNCTION

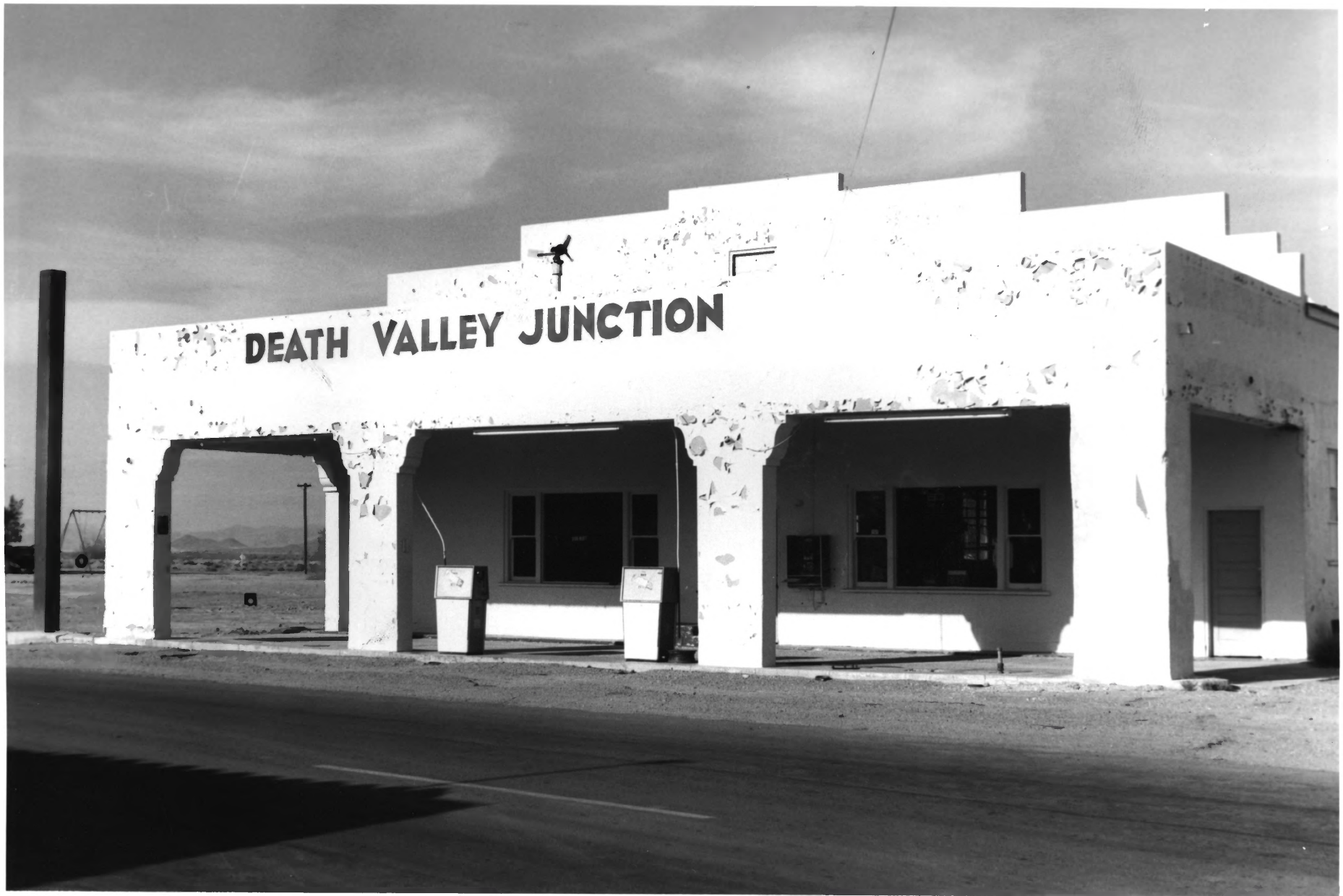




Plate M-4 - MISC. Structures

Death Valley Junction Hist. District

Hwy. 127, Death Valley Jct., Inyo, CA

Marc Appleton

SEP 2 1980

April 26, 1980

Death Valley Junction, CA 92328

Facade of Garage (No. 9) - NEast

Photo # 4(↑) of 42

DEC 10 1980



JIM JUDGE

Plate M-5 - MISC. Structures

Death Valley Junction Hist. District

Hwy. 127, Death Valley Jct., Inyo, CA

Marc Appleton

April 26, 1980

Death Valley Junction, CA 92328

Side view of Garage (No. 9) - South

Photo # 42 of 42

SEP 2 1980

DEC 10 1980