



Riviera Apartments  
901 Druid Park Lake Drive  
Baltimore City, MD

Tim Noble, Photographer  
July 1998

Noble Preservation  
10 Log House Rd Bionville Pt 18092  
Looking SW at main (north) entrance  
Photograph 1 of 15



NO  
LOITERING  
NO  
TRESPASSING

NOT BEING  
USED AS A  
PLACE OF  
BUSINESS  
OR  
OFFICE  
OR  
RENTAL  
AGENCY  
OR  
FOR  
ANY  
OTHER  
PURPOSE  
WITHOUT  
THE  
CONSENT  
OF  
THE  
PROPERTY  
OWNER

Riviera Apartments  
901 David Park Lake Drive

Baltimore City, MD

Tim Noble, Photographer

July 1998

Noble Preservation

10 Ley House Rd Zionsville PA 18992

Detail of main (north) entrance, today south

Photograph 2 of 15



Riviera Apartments  
901 Druid Park Lake Drive  
Baltimore City, MD

Tim Noble, Photographer  
July 1998

Noble Preservation Services  
10 Log House Rd Bionville PA 18792

Looking south at decorative panels in main entrance  
Photograph 3 of 15



Reveria Apartments

901 David Park Lake Drive

Baltimore City, MD

Tim Noble, Photographer

July 1998

Noble Preservation Services

10 Log House Etnoville PA 18092

Looking South at decorative panels in main entrance

Photograph 4 of 15





NO  
LOITERING  
NO  
TRESPASSING

NO POSTING  
NO POSTING

Riviera Apartments  
901 David Park Lake Drive  
Baltimore City, MD

Tim Noble, Photographer  
July 1998

Noble Preservation Services  
10 Log House Rd Zionsville PA 18092

Looking west at last entrance

Photograph 5 of 15



Riviera Apartments

901 Druid Park Lake Drive

Baltimore City, MD

Tim Noble, Photographer

July 1998

Noble Preservation Services

10 Log House Rd

Zionsville PA 18092

Looking east in main lobby

Photograph 6 of 15



Riviera Apartments  
901 Druid Park Lake Drive  
Baltimore City, MD

Tim Noble, Photographer  
July 1998

Noble Preservation Services  
10 Log House Rd Bonaville Pt 1092  
Looking west through main lobby  
Photograph #15



Livira Apartments

901 Druid Park Lake Drive  
Baltimore City, MD

Tim Noble, Photographer

July 1998

Noble Preservation Services

10 Log House Rd Bionville PA 18092

Looking east through secondary (east) door

Photograph 8 of 15





Rivers Apartments

901 Druid Park Lake Drive

Baltimore City, MD

Tim Noble, Photographer

July 1998

Noble Preservation

10 Log House Rd Bonaville PA 15092

Looking SE in Southeastern 1<sup>st</sup> floor apartment - typical

Photograph 9 of 15



Riviera Apartments

901 Druid Park Lake Drive

Baltimore City, MD

Tim Noble, Photographer

July 1998

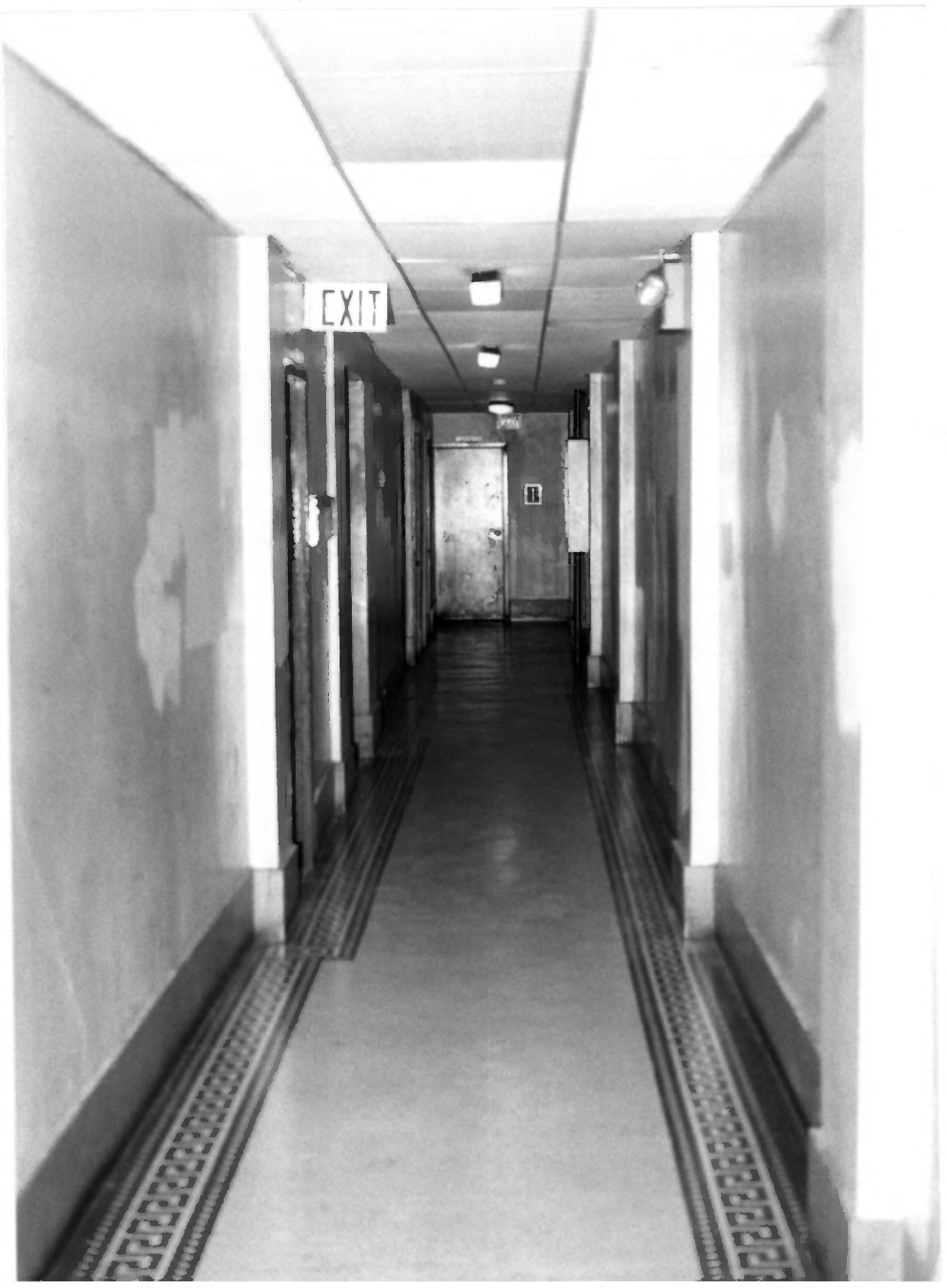
Noble Preservation

10 Log House Rd Zionsville PA 19072

Detail of Stair rail at second floor (typical), looking south

Photograph 10 of 15

EXIT



Riviera Apartments  
901 Druid Park Lake Drive  
Baltimore City, MD

Tim Noble, Photographer  
July 1998

Noble Preservation Services  
10 Log House Rd  
Bonsville PA 18092

Looking west through typical corridor at 2<sup>nd</sup> floor  
Photograph 112 of 15



Riviera Apartments  
901 Dwid Park Lake Drive  
Baltimore City, MD  
Tim Noble, Photographer

July 1998

Note Preservation

10 Log House Rd. Bonsville PA 18092

Typical ceiling detail in northeast unit  
Photograph 12 of 15





Riviera Apartments  
901 Druid Park Lake Drive  
Baltimore City, MD

Tom Noble, Photographer  
July 1998

Noble Preservation Services  
10 Log House Rd. Bonsville PA 18092

Typical apartment hallway in 6<sup>th</sup> fl. northeast corner unit  
Photograph 13 of 15



Riviera Apartments  
901 Druid Park Lake Drive  
Baltimore City, MD

Tim Noble, Photographer

July 1998

Noble Preservation Series

10 Log House Rd Bismarck PA 18922

Typical wall end details example in 6<sup>th</sup> floor southeast unit

Photograph 14 of 15



Livicon Apartments

901 Druid Park Lake Drive

Baltimore City, MD

Tim Noble, Photographer

July 1998

Noble Preservation Services

10 Log House Rd Bionville PA 18092

Typical sunroom door example in 6<sup>th</sup> floor southwest corner unit

Photograph 15 of 15