

United States Department of the Interior
National Park Service

National Register of Historic Places
Registration Form

This form is for use in nominating or requesting determinations for individual properties and districts. See instructions in *How to Complete the National Register of Historic Places Registration Form* (National Register Bulletin 16A). Complete each item by marking "x" in the appropriate box or by entering the information requested. If an item does not apply to the property being documented, enter "N/A" for "not applicable." For functions, architectural classification, materials, and areas of significance, enter only categories and subcategories from the instructions. Place additional entries and narrative items on continuation sheets (NPS Form 10-900a). Use a typewriter, word processor, or computer, to complete all items.

1. Name of Property

historic name Young Women's Christian Association of Plainfield / North Plainfield

other names/site number YWCA of Plainfield / North Plainfield

2. Location

street & number 232 East Front Street NA not for publication

city or town Plainfield vicinity

state New Jersey code NJ county Union code 039 zip code 07060

3. State/Federal Agency Certification

As the designated authority under the National Historic Preservation Act, as amended, I hereby certify that this nomination request for determination of eligibility meets the documentation standards for registering properties in the National Register of Historic Places and meets the procedural and professional requirements set forth in 36 CFR Part 60. In my opinion, the property meets does not meet the National Register criteria. I recommend that this property be considered significant nationally statewide locally. (See continuation sheet for additional comments.)

Signature of certifying official/Title

Date

Assistant Commissioner for Natural & Historic Resources/DSHPO
State of Federal agency and bureau

In my opinion, the property meets does not meet the National Register criteria. (See continuation sheet for additional comments.)

Signature of commenting official/Title

Date

State or Federal agency and bureau

4. National Park Service Certification

I hereby certify that the property is:

- entered in the National Register. See continuation sheet.
- determined eligible for the National Register See continuation sheet.
- determined not eligible for the National Register.
- removed from the National Register.
- other, (explain:)

Signature of the Keeper

Date of Action

Edson H. Beall

3.12.98

YWCA of Plainfield/North Plainfield
Name of Property

Union County, NJ
County and State

5. Classification

Ownership of Property
(Check as many boxes as apply)

- private
- public-local
- public-State
- public-Federal

Category of Property
(Check only one box)

- building(s)
- district
- site
- structure
- object

Number of Resources within Property
(Do not include previously listed resources in the count.)

Contributing	Noncontributing	
1	0	buildings
0	0	sites
0	0	structures
0	0	objects
0	0	Total

Name of related multiple property listing
(Enter "N/A" if property is not part of a multiple property listing.)

N/A

**Number of contributing resources previously listed
in the National Register**

N/A

6. Function or Use

Historic Functions
(Enter categories from instructions)

SOCIAL: civic

DOMESTIC: institutional housing

Current Functions
(Enter categories from instructions)

SOCIAL: civic

7. Description

Architectural Classification
(Enter categories from instructions)

Tudor Revival

Materials
(Enter categories from instructions)

foundation STONE

walls BRICK

roof SLATE

other _____

Narrative Description

(Describe the historic and current condition of the property on one or more continuation sheets.)

See continuation sheets

8. Statement of Significance

Applicable National Register Criteria

(Mark "x" in one or more boxes for the criteria qualifying the property for National Register listing.)

- A** Property is associated with events that have made a significant contribution to the broad patterns of our history.
- B** Property is associated with the lives of persons significant in our past.
- C** Property embodies the distinctive characteristics of a type, period, or method of construction or represents the work of a master, or possesses high artistic values, or represents a significant and distinguishable entity whose components lack individual distinction.
- D** Property has yielded, or is likely to yield, information important in prehistory or history.

Criteria Considerations

(Mark "x" in all the boxes that apply.) N/A

Property is:

- A** owned by a religious institution or used for religious purposes.
- B** removed from its original location.
- C** a birthplace or grave.
- D** a cemetery.
- E** a reconstructed building, object, or structure.
- F** a commemorative property.
- G** less than 50 years of age or achieved significance within the past 50 years.

Narrative Statement of Significance

(Explain the significance of the property on one or more continuation sheets.)

9. Major Bibliographical References

Bibliography

(Cite the books, articles, and other sources used in preparing this form on one or more continuation sheets.)

Previous documentation on file (NPS): N/A

- preliminary determination of individual listing (36 CFR 67) has been requested
- previously listed in the National Register
- previously determined eligible by the National Register
- designated a National Historic Landmark
- recorded by Historic American Buildings Survey # _____
- recorded by Historic American Engineering Record # _____

Areas of Significance

(Enter categories from instructions)

SOCIAL HISTORY

ARCHITECTURE

Period of Significance

1924 - 1947

Significant Dates

1924

Significant Person

(Complete if Criterion B is marked above)

N/A

Cultural Affiliation

N/A

Architect/Builder

Ware, Arthur / Walter Kidde & Company, Inc.

Primary location of additional data:

- State Historic Preservation Office
- Other State agency
- Federal agency
- Local government
- University
- Other

Name of repository:

United States Department of the Interior
National Park Service

**National Register of Historic Places
Continuation Sheet**

Section number 7 Page 1

**YWCA of Plainfield / North Plainfield
Union County, NJ**

Description

Summary

The present YWCA building was constructed in 1924 by Arthur Ware of F. B. & A. Ware, a noted New York City architectural firm nationally recognized for the design of many YWCA buildings. The YWCA building, representing the work of Arthur Ware, possesses high artistic values and embodies the distinctive characteristics of a period of construction. Overall, the building reads in the Tudor Revival (old English Tudor) style. This formal style was commonly utilized for both residential and public buildings through the United States during the 1920s and was the chosen style of the founding board members (YWCA of Plainfield / North Plainfield 1979). Close examination of the building's stylistic construction details, however, reveals Arthur Ware's creative play on this style. Ware altered classical organizational rules by using asymmetrical and discontinuous window and corner quoin-work. His attention to shade and finish variations of exterior building materials (ledgestone, brick, limestone, slate) is unique to this building. The YWCA of Plainfield / North Plainfield has maintained the integrity of its original 1920s Tudor Revival facade, building design, floor plan, and much of its interior finishes. It continues to function in a capacity similar to its earlier established program.

Text

Arthur Ware designed both the exterior and interior of the Plainfield YWCA in the Tudor Revival style (Photo 1). The building is three stories in height. The first and second stories are finished with "clinker" brick in random shades laid in a Flemish bond. The raised basement is finished with variegated ledge stone, quarried in Princeton, and laid in a random/broken-coursed pattern (Photo 2). The hipped, dormered slate roof with a projecting copper cornice conceals the third floor. The watertable, band courses, window jambs and heads, and parapets are Indiana limestone. The limestone's variegated shades range from buffs to blues.

This Tudor Revival building is diagonally oriented towards the corner of East Front Street and Church Street (Photos 3, 4, 5, 6). The westerly-facing main entrance commands a visual presence which stems from the Beaux Arts tradition. The principal facade is organized around a two-story, limestone entrance bay which is capped by an ornamentally carved parapet and is placed on a 45-degree angle connecting the northwest and southwest wings.

United States Department of the Interior
National Park Service

National Register of Historic Places
Continuation Sheet

Section number 7 Page 2

YWCA of Plainfield / North Plainfield
Union County, NJ

Description (continued)

The main entrance is approached by granite steps which terminate upon an uncoursed, multi-colored, slate-paved patio that lines the principal facade. An asymmetrical projecting bay above the paired cafeteria doors is inscribed with "YWCA" (Photo 7). All limestone window and door surrounds have Tudor detailing. All 105 double-hung windows and 69 casement windows remain. The main entrance and cafeteria doors have been replaced.

The interior of the building is organized around a 2-story, hexagonal, main-entrance foyer (Photos 8, 9). White oak paneled columns, moldings, and balustrade are detailed in a Tudor motif (Photos 10, 11). The main access stairway is located in an extension of the foyer. Its cast iron newel posts are embellished in low relief with ornamental caps and bases, and its flat cast iron balusters are molded into geometric patterns (Photo 12). All principal first- and second-floor spaces, such as the reception area, two-story gymnasium, theater, cafeteria, classrooms, and office spaces, are accessed off the foyer and main staircase (Photos 13, 14, 15, 16, 17). All the original Tudor-style finishes and detailing remain, including a circular chandelier hanging in the foyer (Photo 18). During the YWCA's heyday young women congregated in the terrace room for midday lunch, breaks from their factory jobs, dinners, dances, weddings and receptions. Today the terrace room is used for a variety of functions, including after-school programs and classes, the summer camp, senior citizen activities and meetings, and receptions.

The original first-floor plan also included the board room, reading room, general secretary's office, building office, information office, health office, examining room, theater box office, kitchen, help's dining room, kitchen storage, dressing room, and two public bathrooms (PSE&G 1924). The second floor originally housed the following: dressmaking and classrooms, a fitting room, rooms for the business women's club (including the girls' club room, the girls' work secretary room, the members' service room, a staff kitchen, a public bathroom, and the auditorium, which included a moving picture booth, stage, and dressing rooms in back of the stage (PSE&G 1924).

The YWCA of Plainfield / North Plainfield provided temporary living quarters to transient girls from 1908 until some time after World War II. The entire third floor, which includes eleven former bedrooms, one large room which may have originally housed one or two private suites, a closet which originally was the trunk storage space, a small space which was the original linen room, and two public bathrooms, housed the above-mentioned living quarters (PSE&G 1924).

The basement houses the swimming pool, gymnasium, locker room attendant's office with bathroom, auxiliary gymnasium, large and small laundry facility, boiler room, hall, dressing rooms,

United States Department of the Interior
National Park Service

National Register of Historic Places Continuation Sheet

Section number 7 Page 3

YWCA of Plainfield / North Plainfield
Union County, NJ

Description (continued)

showers, and bathrooms (Photo 19). All dressing rooms are original, including the white pine partitions. Most of the original basement finishes and detailing remain, with minor alterations, such as a drop ceiling in the swimming pool room.

United States Department of the Interior
National Park Service

National Register of Historic Places Continuation Sheet

Section number 8 Page 4

YWCA of Plainfield / North Plainfield
Union County, NJ

Statement of Significance

Summary

As with many Young Women's Christian Associations (YWCA) throughout the nation, the YWCA of Plainfield / North Plainfield was founded by middle- to upper-class women to serve the needs of the working-class, single girl. The YWCA served the working-class population of European ancestry from Plainfield, as well as the surrounding towns of Garwood, Westfield, Bound Brook, Dunellen, Fanwood, and Somerville (YWCA of Plainfield / North Plainfield 1912). Its presence in Plainfield afforded these girls the opportunity for relaxation, learning, and exercise. The YWCA became the social hub of Plainfield, offering cotillions and a place for wedding receptions and social lunches. It provided transient housing for single women, supported the women's suffrage movement (Anonymous 1967b), and, during the Depression era, became the city's center for domestic employment (Anonymous 1931). Arthur Ware, noted for his other YWCA designs, was chosen as the architect for the building.

Although black women did not partake of the YWCA's services in its early days, an addition to the YWCA building on West Fourth Street was constructed to house both the Moorland Branch of the YWCA, for African-American boys, and a branch of the YWCA for African-American girls in 1926 (Plainfield Chamber of Commerce 1924; Anonymous 1967a; Sanborn Map Company 1910/1951). In October 1955, the board members of the separate Plainfield / North Plainfield YWCAs made the decision to integrate "in order to promote the principle of inclusiveness" (Anonymous 1956). This decision predated the civil rights movement of the 1960's.

The YWCA of Plainfield / North Plainfield is eligible for listing on the National Register of Historic Places under Criterion A, association with events that have made a significant contribution to the broad patterns of history, for its important role in the history of the women's labor movement and African-American integration. It is also eligible under Criterion C, as a representative work of highly respected architect Arthur Ware of F.B. & A. Ware, a noted New York City architectural firm that was recognized for the designs of many YWCA buildings throughout the United States. In addition to meeting those criteria, the YWCA remains largely intact, maintaining its original floor plan, finishes, and facades. It continues to function in its original capacity. The degree to which this YWCA building has maintained the integrity of its design adds to its importance as an example of Ware's work and its place in social history.

United States Department of the Interior
National Park Service

National Register of Historic Places Continuation Sheet

Section number 8 Page 5

YWCA of Plainfield / North Plainfield
Union County, NJ

Statement of Significance (continued)

Text

The Young Women's Christian Association (YWCA) is an important part of the history of the women's labor movement, which began with the mid-19th-century Industrial Revolution and continues to this day. In 1855, the YWCA was founded in England by affluent women who wished to help counter the effects of the Industrial Revolution on the lives of poor and working-class women. The plight of the American working woman, relegated to 12-hour workdays in factories, bakeries, laundries, etc., began to be recognized around the same time. With the recognition of the harsh working conditions came the realization that working women lacked opportunities to relax and pursue recreation in the little spare time available to them. In the early 1860s, missionary Lucretia Boyd asked a group of church women, "Cannot something be done for these girls by benevolent ladies that shall remain a permanent institution?" (YWCA National Board n.d.:1-2).

The American Young Women's Christian Association began in Boston and New York City. By the late 1860s YWCAs were created in many industrial cities throughout the eastern and central United States such as Providence, Hartford, Pittsburgh, Cleveland, St. Louis, Dayton, Washington, D.C., Buffalo, Philadelphia, and Springfield, Massachusetts (Sims 1935:7). "Wanted: Girls" became a familiar newspaper advertisement in any industrial city. Although the YWCA expressed concern about the working conditions of young women who worked in factories, advocacy was not the main mission. Newly chartered YWCAs were not necessarily formed to change the work environment, but to create a socially oriented outlet where women could enjoy recreational and educational benefits (Anonymous n.d.).

The history of the YWCA of Plainfield / North Plainfield illustrates a significant component of Plainfield's history, part of a broader pattern of social change which occurred in the United States in the mid- to late 1800s and the early part of this century. Plainfield, like many small American cities transformed by industrialization in that period, developed a set of related social and economic problems. The formation of organizations such as the YWCA reflects the growing awareness of social issues on the part of the wealthy, and their efforts to address some of these problems through charitable works.

United States Department of the Interior
National Park Service

National Register of Historic Places Continuation Sheet

Section number 8 Page 6

YWCA of Plainfield / North Plainfield
Union County, NJ

Statement of Significance (continued)

The creation of the YWCA in Plainfield was the work of Mrs. Frederick G. Mead, a member of the National Board of the YWCA in New York City. Mrs. Mead organized a group of Plainfield citizens to establish a board of directors. Miss Amy Pryor Tapping, a former volunteer at the Utica YWCA, was hired as general secretary in charge of the YWCA's activities and programs (Anonymous 1967a). Mrs. Margaret E. Mosher became this YWCA's first physical director (Anonymous 1934). As with many YWCA's throughout the nation, the YWCA of Plainfield / North Plainfield was founded by middle- to upper-class women to serve the needs of the working-class, single girl. The Plainfield YWCA originally served Plainfield as well as the neighboring towns of Garwood, Westfield, Bound Brook, Dunellen, Fanwood, and Somerville (Plainfield YWCA 1912).

On April 18, 1907, the YWCA of Plainfield was chartered. Mrs. Mead acquired the former home of the recently deceased Dr. Olin L. Jenkins at 212 East Front Street, about one block west of where the YWCA is currently located, to provide a headquarters for the organization. These original facilities included a meeting room and an office on the first floor, classrooms on the second floor, and bedrooms for transient guests on the third floor. Miss Tapping soon discovered that a majority of the young women wanted to take part in gym classes: "Women were aware that men had been enjoying such programs at the YMCA for years. They wanted the same activities and they got them" (Anonymous 1967a). The backyard shed became a basketball court and recreational hall, and the Green Brook, which ran behind the building, was used for swimming in summer months, while other athletics took place on the lawn and nearby fields. The high school pool was used for swimming in the winter months. Privately owned tennis courts, located on wealthy residential properties, were utilized for tennis lessons (YWCA of Plainfield / North Plainfield 1914-1915). The YWCA provided classes in Bible study, cooking, current events, dressmaking, embroidery, English for foreigners, German, millinery, gymnasium, advanced gymnasium, basketball, and dancing, along with a reading club and a glee club for single young women (YWCA of Plainfield / North Plainfield 1914-1915).

The home of Dr. Jenkins was remodeled in 1909 by James E. Ware & Sons to better serve the needs of the YWCA's programming. This facility was soon outgrown and the board members looked for alternative arrangements. The directors of the YWCA of Plainfield purchased a nearby piece of property which is known today as 232 East Front Street. Funds for the construction of the new building were raised by member subscription and from other sources including the sale of the old YWCA building (Anonymous 1942, YWCA of Plainfield / North Plainfield 1925). The new YWCA was opened to the public on October 18, 1925.

United States Department of the Interior
National Park Service

**National Register of Historic Places
Continuation Sheet**

Section number 8 Page 7

YWCA of Plainfield / North Plainfield
Union County, NJ

Statement of Significance (continued)

A building committee, chaired by Mrs. Charles L. Hyde, was appointed by the board to select an architect for the construction of the new building (Anonymous 1934). The committee engaged Dr. Warren P. Laird, Professor of Architecture at the University of Pennsylvania, to run an architectural design competition. Arthur Ware of F. B. & A. Ware submitted the winning entry and was chosen as project architect. The sum of \$3,259 was spent on this competition (YWCA of Plainfield / North Plainfield 1925). Walter Kidde and Company Inc., Engineers and Constructors, of 140 Cedar Street in New York, was responsible for the general construction of the new YWCA building. Arthur F. Neumann's crew took care of all plumbing installations. A. V. Searing was the electrical contractor and Charles H. Dutcher was the heating contractor (Anonymous n.d.[c]). The Public Service Electric and Gas Company provided the specifications for lighting (PSE&G 1924).

Arthur Ware was the obvious choice for the YWCA's architect. Ware graduated from Columbia University's School of Architecture in 1898 and attended the Ecole des Beaux Arts in Paris from 1902 to 1905. After the completion of his studies, Ware became a partner in his father's architectural firm, James E. Ware & Sons, and held the position from 1905 until 1918, the year of his father's death. At that time, Ware formed a new partnership with his brother Franklin, who was also a graduate of Columbia University's School of Architecture, and created the firm F. B. & A. Ware. Arthur Ware was an associate professor of architecture at Columbia University from 1914 to 1922. He died in 1939 at the age of 62 (New York Herald Tribune 1939).

His father's firm, James E. Ware & Sons, had previously established itself in Plainfield's upper-class circles. In 1909, James E. Ware had renovated the home of Dr. Jenkins for the YWCA of Plainfield (James E. Ware & Sons 1909). Between 1914 and 1916, Franklin B. and Arthur designed and constructed the Neo-Renaissance home of Louis K. Hyde in Plainfield (Anonymous 1914; Anonymous 1916). Arthur Ware was noted for the design of the Grant Avenue Presbyterian Church, also located in Plainfield (Withey and Withey 1956:632).

Arthur Ware had something more than local recognition; his architectural firm had acquired a reputation as a YWCA designer. Prior to the construction of the YWCA of Plainfield, Ware constructed the Niagara Falls YWCA, the Galveston, Texas YWCA, and the Cedar Rapids YWCA (letter, F. B. & A. Ware to Mrs. Charles Hyde, Nov. 6, 1924). Just after his death, the Herald Tribune wrote, "The firm has designed many Young Woman's Christian Association Buildings in various cities and numerous country homes." Arthur Ware pronounced the YWCA of Plainfield "one of the finest buildings he had ever worked upon" (Anonymous 1942).

United States Department of the Interior
National Park Service

**National Register of Historic Places
Continuation Sheet**

Section number 8 Page 8

YWCA of Plainfield / North Plainfield
Union County, NJ

Statement of Significance (continued)

In the early days, African-American women were not included in the YWCA. It was not until 1920 that YW board members met with African-American leaders to discuss providing services for African-American girls (Anonymous 1967). In 1923, a branch known as the Moorland Branch of the YMCA was established for African-American boys in rooms on West 2nd Street (Plainfield Chamber of Commerce 1924). In 1926 an addition to the YMCA building on West Fourth Street was constructed to house both the Moorland Branch of the YMCA and a branch of the YWCA for African-American girls (Plainfield Chamber of Commerce 1924; Anonymous 1967; Sanborn 1910-1951).

In 1939, Jessie Munger, a wealthy Plainfield citizen, donated a building located on East Fifth Street, providing African-American girls their own YWCA building (Anonymous 1967; Mrs. Katherine Mayers, personal communication 8/6/96). The National Board in New York City sent Jane Sadler to be the executive director (Mrs. Katherine Mayers, personal communication 8/6/96). The East Fifth Street YWCA served as the home for various community organizations such as the Y-teens and was utilized by the Bethel Presbyterian Chapel. The East Fifth Street YWCA did not have a swimming pool and could not offer the array of programming provided by the main YWCA (Mrs. Sara Frances Wood, personal communication 8/6/96).

It began to be recognized that maintaining two separate YWCA was not economically sound or socially acceptable (Mrs. Sara Frances Wood, personal communication 8/6/96) and therefore efforts towards integration began nationally as well as locally. In the 1940s, the National YWCA Convention stated formally, in the Interracial Charter, its intent to be one fellowship without distinctions (YWCA National Board n.d.). In 1944, the YWCA of Plainfield set up an "Interracial Practices Study" and in 1947 initiated an anti-discriminatory survey (Plainfield YWCA 1944, 1947). During the early 1950s the YWCA sponsored meetings and discussions concerning race relations and civil rights (Plainfield YWCA 1952a). In 1952, the YWCA Integration Committee recommended integration of the administration, staff, committees, and leadership groups and a gradual integration of the program activities (Plainfield YWCA 1952b). The YWCA's movement towards integration predates the civil rights movement of the 1960s. The Board of the Plainfield YWCA, in its effort to provide services for the entire community, offered a program that was inclusive of all girls and women.

United States Department of the Interior
National Park Service

**National Register of Historic Places
Continuation Sheet**

Section number 9 Page 9

YWCA of Plainfield / North Plainfield
Union County, NJ

Bibliography

Anonymous

1914 Residence of Mr. Louis K. Hyde, Plainfield, N.J. Floor plans in *The American Architect*, Vol. CVI, No. 2014, July 29, 1914.

Anonymous

1916 House of Louis K. Hyde, Esq., Plainfield, NJ; Messrs. Franklin B. Ware and Arthur Ware, Architects. Photo and floor plans shown in *The American Architect*, Vol. CIX, No. 2103, April 12, 1916.

Anonymous

1931 YWCA Arranges Schedule to Meet Economic Stress. Dated October 28, 1931. Newspaper clipping on file at the YWCA of Plainfield / North Plainfield.

Anonymous

1934 YWCA Building Opened Doors Oct. 18, 1925 as Permanent Institution. Newspaper clipping on file at the YWCA of Plainfield / North Plainfield.

Anonymous

1942 Plainfield YWCA, founded in 1907, has modern home. From newspaper clipping in the files of the YWCA of Plainfield / North Plainfield.

Anonymous

1956 "YW" Will Sell Fifth Street Building. *Courier News*, April 6, 1956. Newspaper clipping on file at the residence of Dr. Bethel (pastor of Bethel Presbyterian Church 1982-1992), Plainfield.

- Anonymous

1967a First General Secretary Recalls Early "YW" Years. *Courier News* April 7. In the files of the YWCA of Plainfield / North Plainfield.

Anonymous

1967b Plainfield "Y" minutes show history changes. *Courier News* April 7. In the files of the YWCA of Plainfield / North Plainfield.

United States Department of the Interior
National Park Service

**National Register of Historic Places
Continuation Sheet**

Section number 9 Page 10

YWCA of Plainfield / North Plainfield
Union County, NJ

Bibliography (continued)

Anonymous

n.d. A History of Plainfield; Chapter 9 - A Gradual Change. From a newspaper clipping in the files of the YWCA of Plainfield / North Plainfield.

James E. Ware & Sons

1909 Alterations to the YWCA of Plainfield, 212-208 East Front Street, dated April 29, 1909; City #3612. In the files of the Plainfield Public Library (File #33F).

Mayers, Katherine

1996 personal communication, August 6.

New York Herald Tribune

1939 Arthur Ware, N.Y. architect, is dead at 62. *New York Herald Tribune*, February 20, 1939.

Plainfield Chamber of Commerce

1924 Everyone ready for community chest campaign. *Plainfield Chamber of Commerce Magazine*. Vol. 3, No. 5, November 1924. On file at the YWCA of Plainfield / North Plainfield.

Plainfield YWCA

1912 *Sixth Annual Report of the Young Women's Christian Association of Plainfield, N.J.*

1914-1915 *Young Women's Christian Association, 210 East Front Street, Plainfield, New Jersey, 1914-1915.*

1944 Notes on Executive Committee Meeting, June 7.

1947 Minutes of Executive Committee Meeting, April 9.

1952a Minutes, Board of Directors, January 23.

1952b Minutes, Integration Committee, September 23.

1979 *Whys and Wherefores - Spring Edition (April, May, June).*

United States Department of the Interior
National Park Service

**National Register of Historic Places
Continuation Sheet**

Section number 9 Page 11

YWCA of Plainfield / North Plainfield
Union County, NJ

Bibliography (continued)

Public Service Electric Company

1924 *Specifications for Lighting - YWCA - Plainfield, N.J.* On file at the YWCA of Plainfield / North Plainfield.

Sims, Mary S.

1935 *The Natural History of a Social Institution - the YWCA.* The Woman's Press, New York.

Withey, Henry F., and Elsie Rathburn Withey

1956 *Biographical Dictionary of American Architects (Deceased).* New Age Publishing Co., L.A., California.

Wood, Sara Frances

1996 Personal communication, August 6.

YWCA of Plainfield / North Plainfield

1925 Treasurer's Report (lists assets and contractual obligations), dated May 19, 1925. On file at the YWCA of Plainfield / North Plainfield.

YWCA National Board

n.d. *The Story of the YWCA.* From the files of the YWCA of Plainfield / North Plainfield.

Correspondence

1924 Letter from firm of F. B. & A. Ware to Mrs. Charles Hyde regarding the YWCA of Plainfield / North Plainfield, dated Nov. 6, 1924; signed by Arthur Ware.

Historic Photos:

Bryniarski, H.J.

1924 Model of YWCA. *Plainfield Chamber of Commerce Magazine.* Vol. 3, No. 5, November. Plainfield, N.J. (caption - "Young women's activities will be outstanding feature of the Plainfields when new Y.W.C.A. building is finished next year").

Courier-News

1926 Y.W.C.A. *Plainfield and Vicinity in Pictures.* Courier-News, Plainfield, N.J.

United States Department of the Interior
National Park Service

National Register of Historic Places Continuation Sheet

Section number 9 Page 12

YWCA of Plainfield / North Plainfield
Union County, NJ

Bibliography (continued)

Maps:

Sanborn Map Company

1910-1951 *Insurance Maps of the City of Plainfield, Union Co. and Borough of North Plainfield, Somerset Co., New Jersey.* Sanborn Map Company, New York.

United States Department of the Interior
National Park Service

National Register of Historic Places
Continuation Sheet

Section number 10 Page 13

YWCA of Plainfield / North Plainfield
Union County, NJ

Verbal boundary description

Block 310, Lot 1. Start at the southwest corner of East Front Street and Church Street. Proceed southeast along Church Street (N46°47'00"W) 167.72 feet. Turn northeast (S43°13'00"W), proceed 106.73 feet. Turn northwest (S46°49'00"E), proceed 86.19 feet. Turn southwest (N43°11'00"E), proceed 6.3 feet. Turn northwest (S46°49'00"E), proceed 75.16 feet. Turn southwest (N46°51'00"E), proceed 100.52 feet to starting southwest corner.

Verbal boundary justification

The nominated property includes the entire YWCA building footprint, as well as the front corner entrance and adjacent walkways, to include the entire tax map lot.

United States Department of the Interior
National Park Service

**National Register of Historic Places
Continuation Sheet**

Section number Photos Page 14

**YWCA of Plainfield / North Plainfield
Union County, NJ**

All photos are of the YWCA of Plainfield / North Plainfield, Union County, NJ.

Photo 1

Photographer: Dawn Turner

Date: 5/29/96

Location of Negative: CRCG, Highland Park, NJ (roll 1, neg. 32, exp. 4)

Description: Three-dimensional model from 1924. Source - Plainfield Chamber of Commerce Magazine Vol. 3, No. 5.

Photo 2

Photographer: Carla Cielo

Date: 6/20/96

Location of Negative: CRCG, Highland Park, NJ (roll 8, neg. 1, exp. 1)

Description: Detail from Church Street elevation. View facing northeast. Note variegated ledge stone at basement, limestone watertable, and "clinker" brick first story.

Photo 3

Photographer: Dawn Turner

Date: 5/29/96

Location of Negative: CRCG, Highland Park, NJ (roll 2, neg. 13, exp. 3)

Description: Main entrance at corner of East Front Street and Church Street. View facing east. (Photo taken shortly after the building's opening in October 1925).

Photo 4

Photographer: Carlo Cielo

Date: 6/20/96

Location of Negative: CRCG, Highland Park, NJ (roll 8, neg. 9, exp. 9)

Description: Main entrance at the corner of East Front Street and Church Street. View facing east.

**United States Department of the Interior
National Park Service**

**National Register of Historic Places
Continuation Sheet**

Section number Photos Page 15

**YWCA of Plainfield / North Plainfield
Union County, NJ**

Photo 5

Photographer: Carla Cielo

Date: 6/20/96

Location of Negative: CRCG, Highland Park, NJ (roll 8, neg. 6, exp: 6)

Description: East Front Street elevation. View facing southeast.

Photo 6

Photographer: Carla Cielo

Date: 6/20/96

Location of negative: CRCG, Highland Park, NJ (roll 8, neg. 24, exp: 24)

Description: Church Street elevation, View facing northeast.

Photo 7:

Photographer: Carla Cielo

Date: 6/20/96

Location of negative: CRCG, Highland Park, NJ (roll 8, neg. 13, exp. 13)

Description: Projecting limestone bay window. View facing southeast.

Photo 8:

Photographer: Dawn Turner

Date: 4/30/96

Location of negative: CRCG, Highland Park, NJ (roll 3, neg. 25, exp. 2)

Description: Tudor entrance foyer with circular balcony. View facing south. (Photo taken shortly after the building's opening in October 1925).

Photo 9:

Photographer: Carla Cielo

Date: 6/20/96

Location of negative: CRCG, Highland Park, NJ (roll 8, neg. 16, exp. 16)

Description: Church Street elevation, View facing northeast.

**United States Department of the Interior
National Park Service**

**National Register of Historic Places
Continuation Sheet**

Section number Photos Page 16

**YWCA of Plainfield / North Plainfield
Union County, NJ**

Photo 10:

Photographer: Carla Cielo

Date: 5/30/96

Location of negative: CRCG, Highland Park, NJ (roll 7, neg. 20, exp. 3)

Description: Upper level of Tudor foyer. View facing south.

Photo 11:

Photographer: Carla Cielo

Date: 6/20/96

Location of negative: CRCG, Highland Park, NJ (roll 8, neg. 18, exp. 18)

Description: Detail of Tudor foyer. View facing southeast.

Photo 12:

Photographer: Carla Cielo

Date: 5/30/96

Location of negative: CRCG, Highland Park, NJ (roll 6, neg. 18, exp. 2)

Description: Main access stairway with cast iron newel post and balusters. View facing south.

Photo 13:

Photographer: Dawn Turner

Date: 5/29/96

Location of negative: CRCG, Highland Park, NJ (roll 3, neg. 27, exp. 4)

Description: Reception area. View facing northeast. (Photo taken shortly after the building's opening in October 1925).

Photo 14:

Photographer: Carla Cielo

Date: 6/20/96

Location of negative: CRCG, Highland Park, NJ (roll 8, neg. 14, exp. 14)

Description: Reception area. View facing northeast.

United States Department of the Interior
National Park Service

**National Register of Historic Places
Continuation Sheet**

Section number Photos Page 17

**YWCA of Plainfield / North Plainfield
Union County, NJ**

Photo 15

Photographer: Carla Cielo

Date: 5/30/96

Location of negative: CRCG, Highland Park, NJ (roll 6, neg. 1, exp. 1)

Description: Gymnasium. View facing north.

Photo 16

Photographer: Dawn Turner

Date: 5/29/96

Location of negative: CRCG, Highland Park, NJ (roll 2, neg. 15, exp. 5)

Description: Theater, second level. View facing southeast. (Photo taken shortly after the building's opening in October 1925).

Photo 17

Photographer: Carla Cielo

Date: 5/30/96

Location of negative: CRCG, Highland Park, NJ (roll 6, neg. 2, exp. 2)

Description: Theater, second level. View facing southeast.

Photo 18

Photographer: Carla Cielo

Date: 5/30/96

Location of negative: CRCG, Highland Park, NJ (roll 6, neg. 4, exp. 4)

Description: View of original lighting fixture.

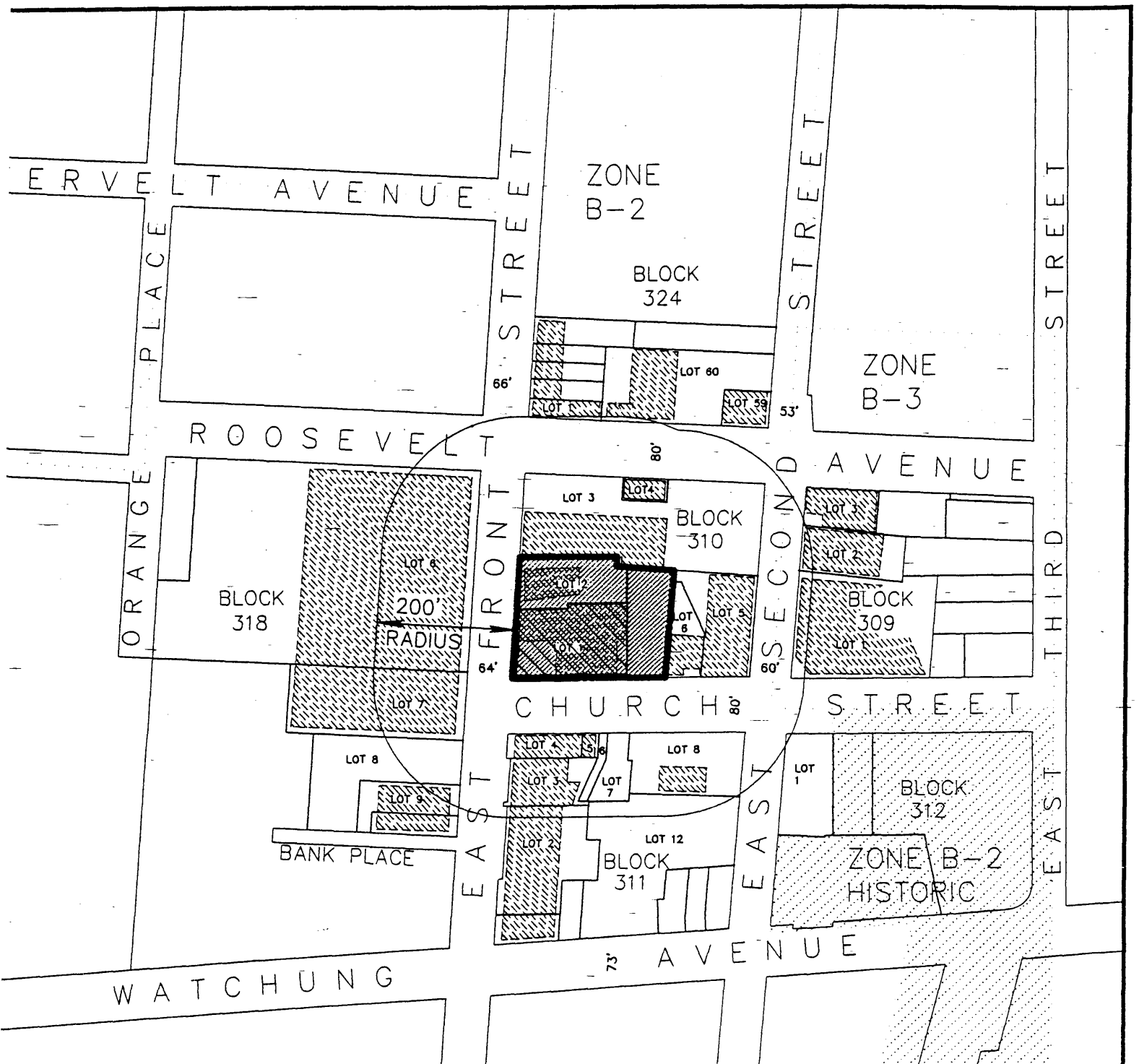
Photo 19

Photographer: Carla Cielo

Date: 5/30/96

Location of negative: CRCG, Highland Park, NJ (roll 6, neg. 3, exp. 3)

Description: Original dressing rooms. View facing northeast.



EXISTING BUILDINGS
 ZONE BOUNDARY

AREA MAP
 SCALE 1" = 200'

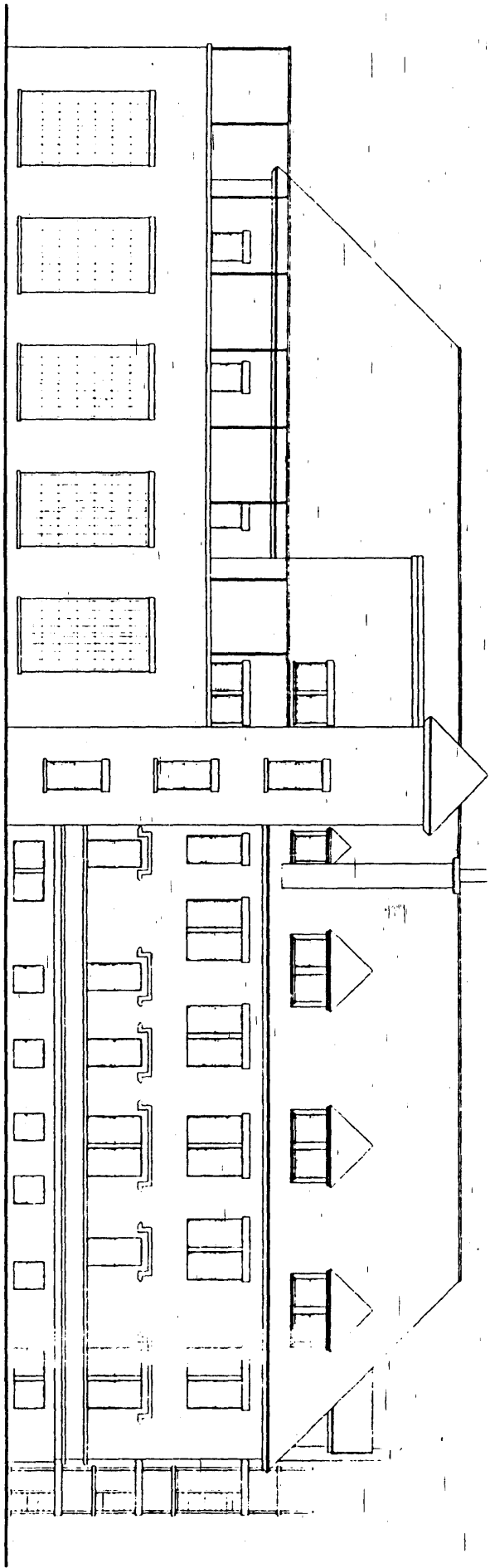


RECEIVED
 NOV 17 1997
 HISTORIC PRESERVATION OFFICE

NOTES :

1. PROPERTY BEING KNOWN AS LOTS 1 & 2 BLOCK 310 AS SHOWN ON THE CITY OF PLAINFIELD, UNION COUNTY TAX MAP SHEET No. 2.
2. BOUNDARY INFORMATION TAKEN FROM A SURVEY PERFORMED BY LYNCH, GIULIANO & ASSOC., INC. ON 6/23/97. PREPARED BY R. NEILS SPERLING P.L.S., P.P., L.S. No. 27503.

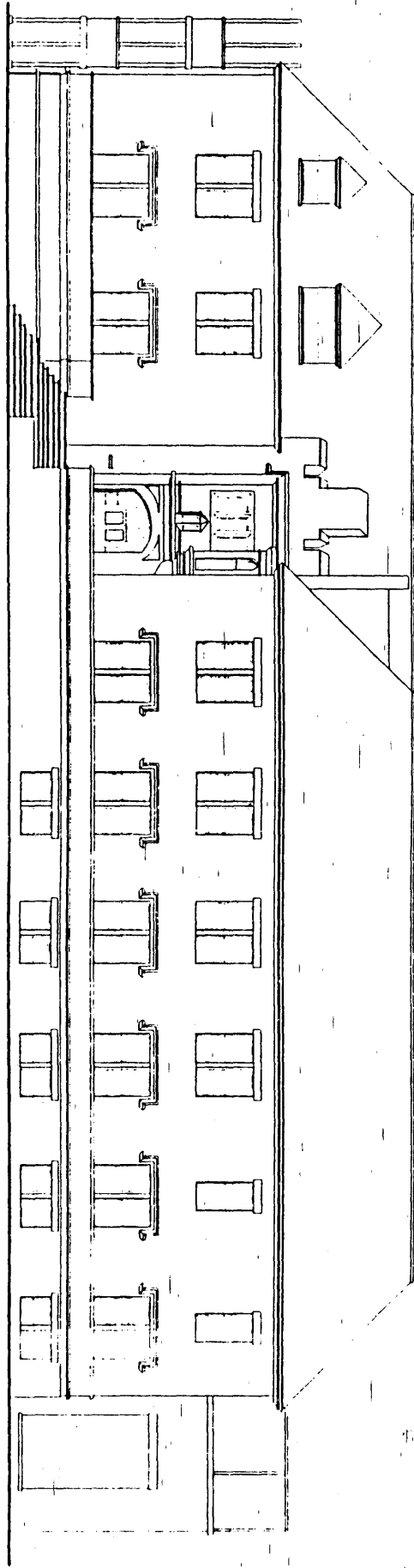
NORTH ELEVATION



DATABASE NAME ywca.d

	DATE	REV. DATE	DESCRIPTION	NORTH ELEVATION 261 MAPLE AVENUE RED BANK, N.J. 07701 TEL. 808 842 8021 FAX 808 747 7636	Gary T. Kaplan, AIA C637 Edmund H. Gaunt, Jr., AIA C521 Robert F. DeSantis, AIA C835	Y.W.C.A. Union County PLANFIELD, NEW JERSEY
	12 AUG 96					

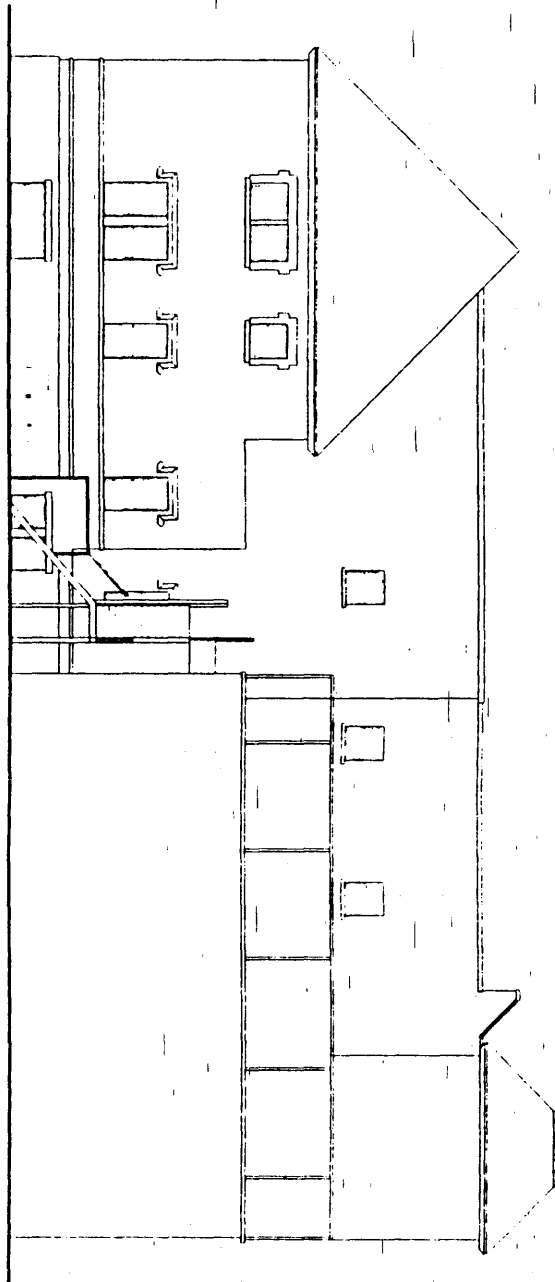
SOUTH ELEVATION



DATABASE NAME yood db

	DATE	NO. (SHEET)	DESCRIPTION	PROJECT	ADDRESS	DESIGNER	CITY	Y.W.C.A. Union County PLANFELD. NEW JERSEY
	12 AUG 96		SOUTH ELEVATION	241 MAPLE AVENUE RED BANK, N J 07701 TEL. 808 842 8071 FAX 808 747 7634	Gary Y. Kaplan, AIA Edmund H. Gajda, JR., AIA Robert F. DeSantis, AIA	CJBY CS71 CS25		
9630								

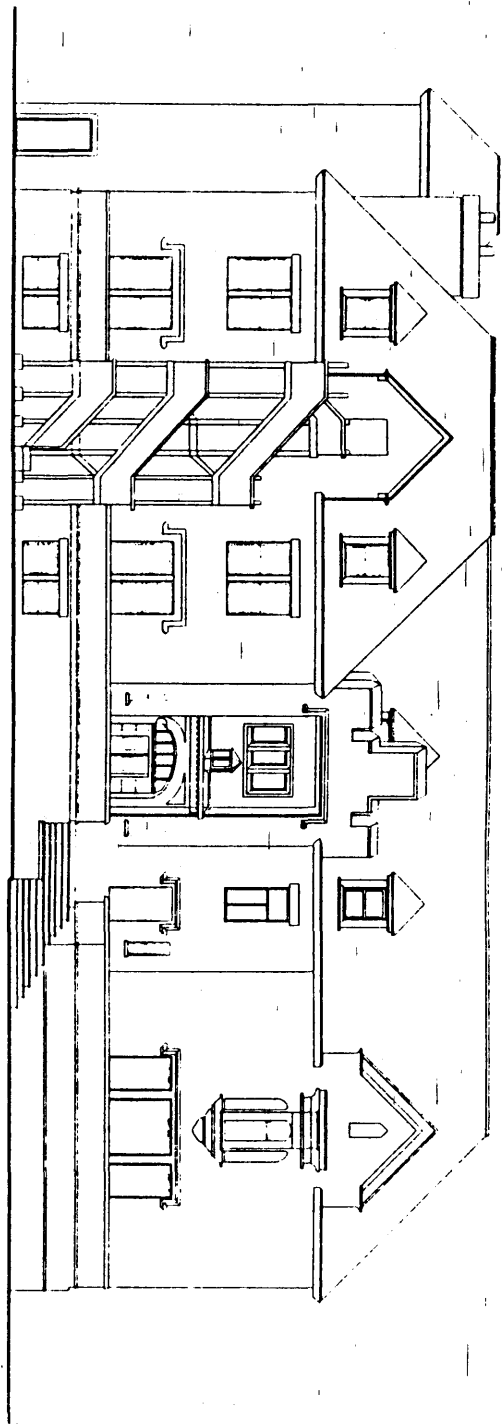
EAST ELEVATION




DATABASE NAME ywca.d

	DATE	DESCRIPTION	EAST ELEVATION	241 MAPLE AVENUE RED BANK, N J 07701 TEL 908 842 8071 FAX 908 747 7834	Gary Y. Kaplan, AIA C4387 Edmund H. Daurt, Jr., AIA C5251 Robert F. DeSantis, AIA C8325	Y.W.C.A. Union County PLANFELD, NEW JERSEY
	9630					

WEST ELEVATION

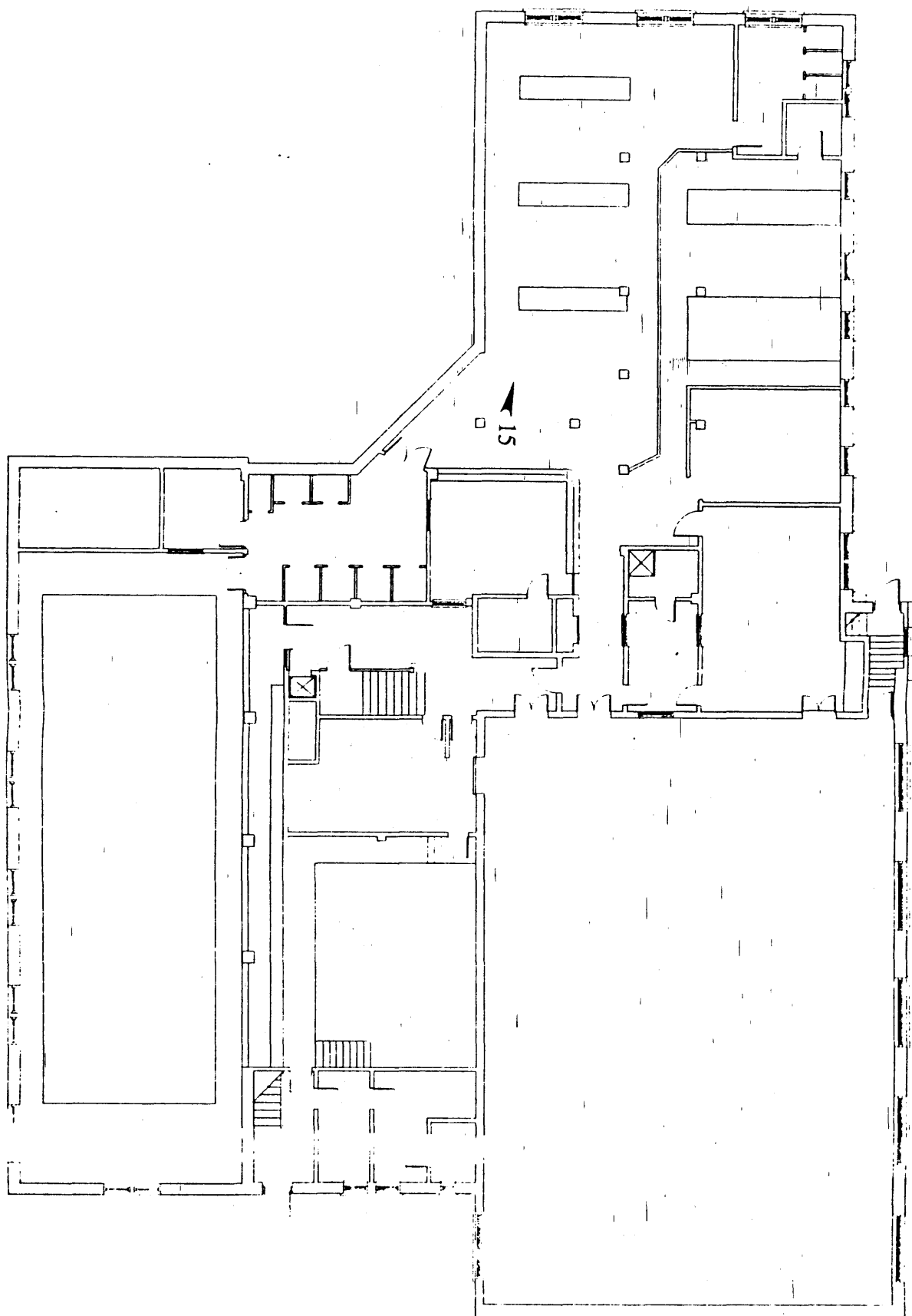
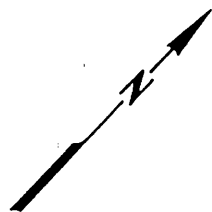


DATABASE NAME 10000

	12 AUG 96 9630	REV. DATE _____ _____ _____ _____ _____	DESCRIPTION WEST ELEVATION	261 MAPLE AVENUE RED BANK, N.J. 07701 TEL 808 842 8021 FAX 808 747 7834	Gary T. Kaplan, AIA CA387 Edmund H. Gauril, Jr., AIA C3251 Robert F. DeSantis, AIA C8325	Y.W.C.A. Union County PLANFELD, NEW JERSEY
	441 AS NOTED TEL MET MAIL ENHANC	0819211 8160	DRAWN LAT	211 012111		

KEY

▲ 15 = CRCC PHOTO ANGLE

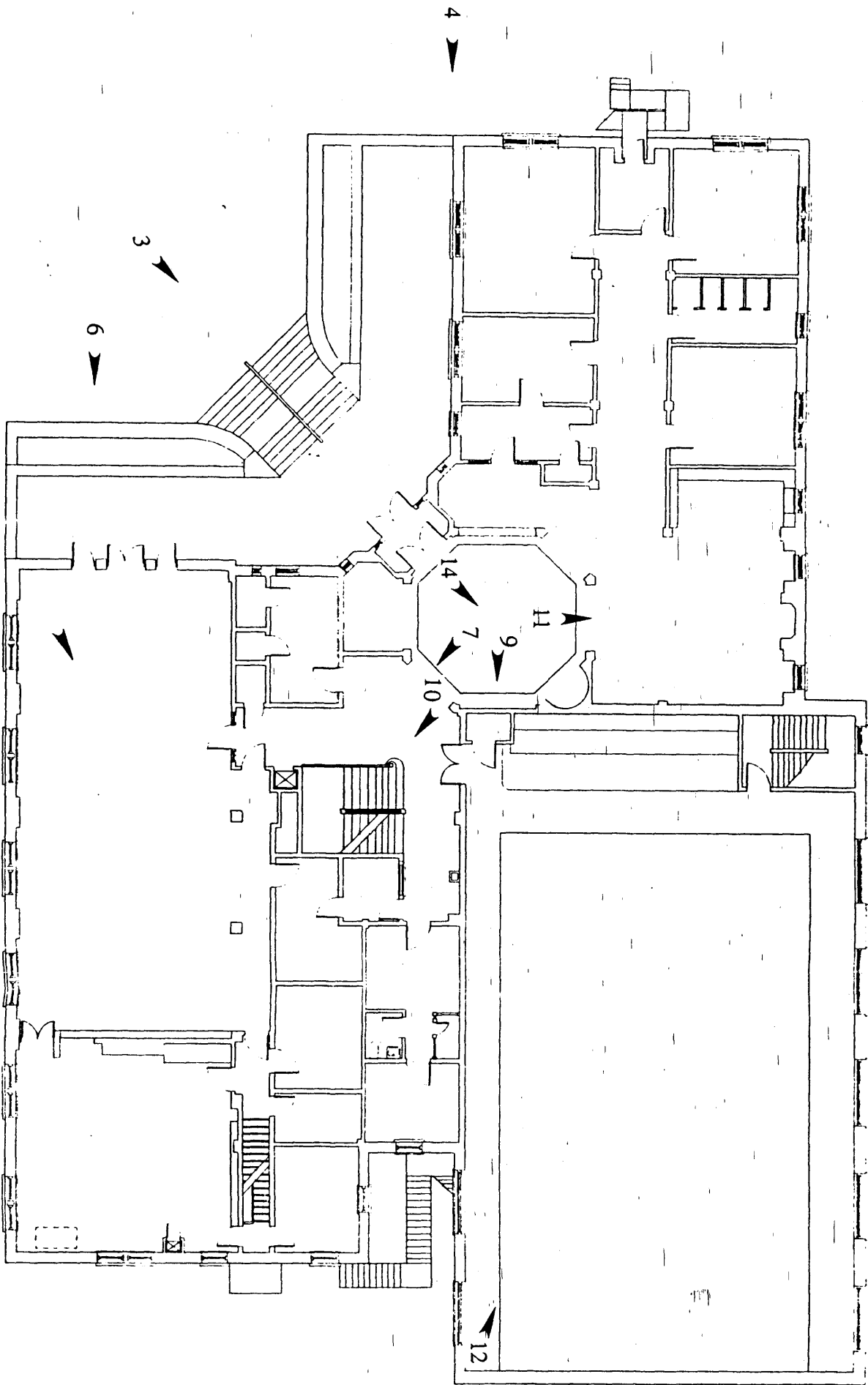
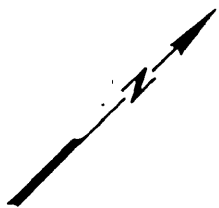


BASEMENT PLAN

DATABASE NAME jacob

E-1	DATE	REV. DATE	DESCRIPTION	EXISTING BASEMENT PLAN	KAPLAN HALINI DESANTIS ARCHITECTS	241 MAPLE AVENUE	Gary Y. Kaplan, AIA C4387	T.W.C.A. Union County PLANFELD/NPLANFELD, NEW JERSEY
	25 SEPT 96					RED BANK, N. J. 07701	Edmund H. Oauri, Jr., AIA C5211	
	96330					TEL 908 842 8071	Robert F. DeSantis, AIA C6325	
						FAX 908 747 7644		
	SCALE	1/8" = 1'-0"	DATE	2-96	DRAWN	LAT		
		(1) NOT SCALE DRAWING						

KEY
 ▲ 15 = CIRC PHOTO ANGLE



FIRST FLOOR PLAN



2

5

DATABASE NAME: *yruc 01*

DATE 25 OCT 96	NO.	DATE	DESCRIPTION
	1		
PROJECT NO. 9630	NO.	DATE	DESCRIPTION
	1		

EXISTING
 FIRST FLOOR PLAN

SCALE: 1/8" = 1'-0"
 BY: M.J. BLAZ DRAWING

CHECKED: []
 DATE: []

KAPLAN
 HAUNT
 DESANTIS
 ARCHITECTS

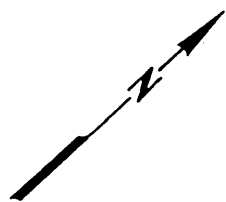
261 MAPLE AVENUE
 RED BANK, N.J. 07701
 TEL: 908 842 8021
 FAX: 908 747 7634

Dary Y. Kaplan, AIA C4387
 Edmund H. Haunt, Jr., AIA C5251
 Robert F. DeSantis, AIA C8325

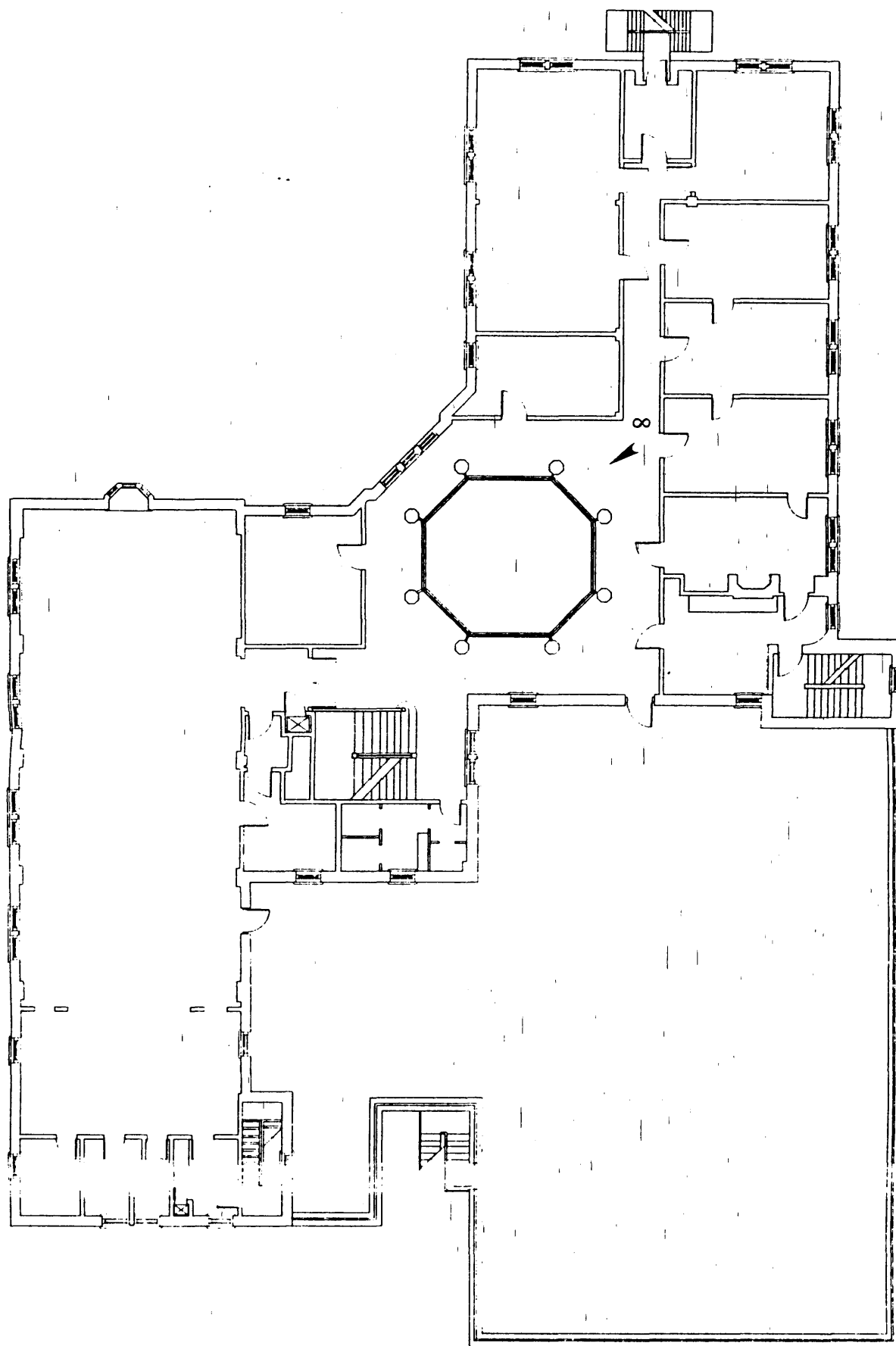
T.W.C.A.
 Union County
 PLANFIELD/N.PLANFIELD, NEW JERSEY

KEY

▲ 15 = CRCC PHOTO ANGLE



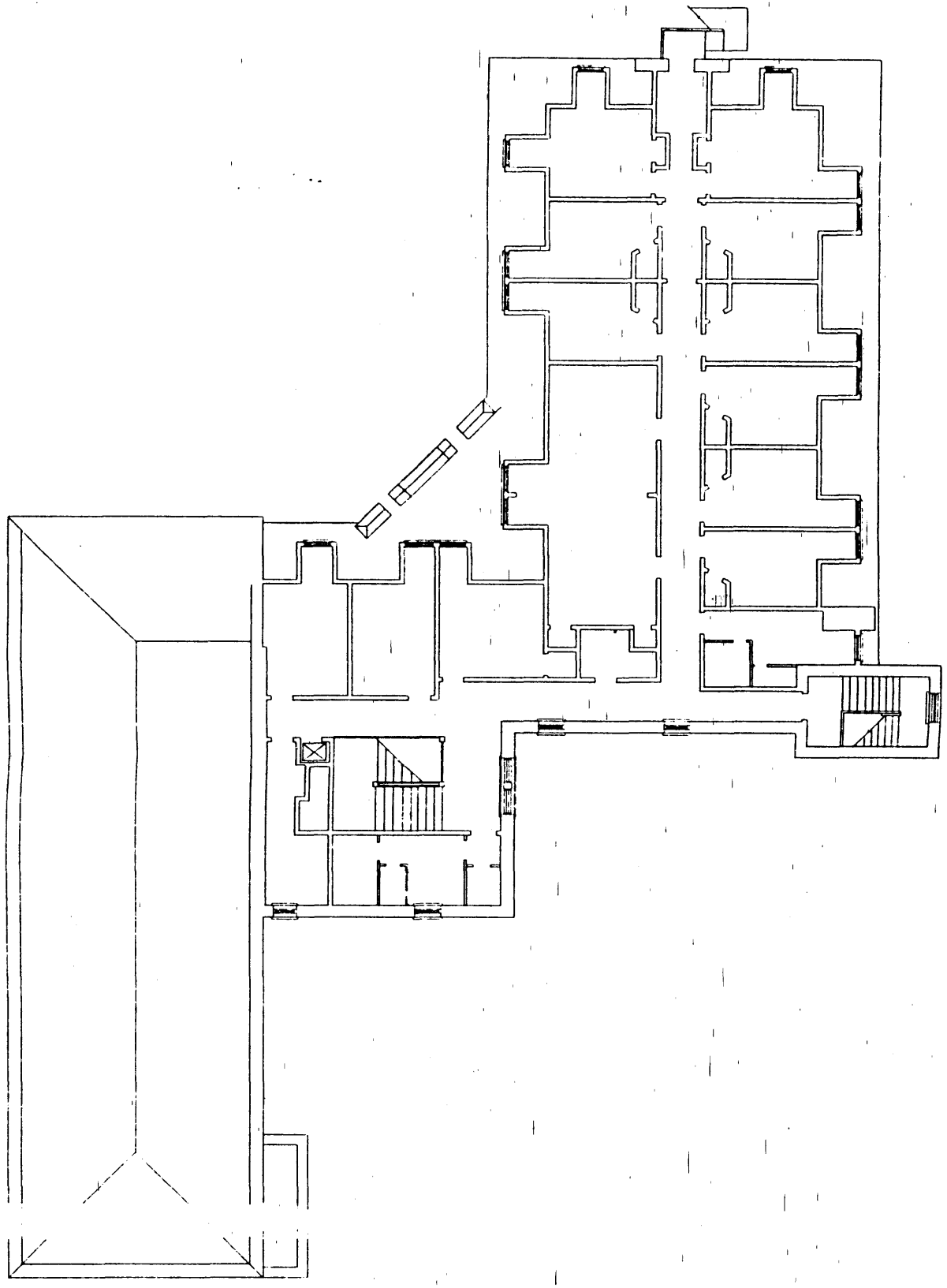
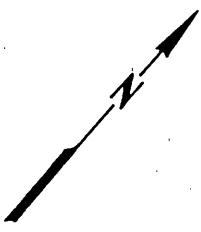
SECOND FLOOR PLAN



DATABASE NAME yoon.db

DATE 23 OCT 96	REV. DATE	DESCRIPTION	KAPLAN		241 MAPLE AVENUE	Gary H. Kaplan, AIA	CA387	Y.W.C.A.
			HAUNT		RED BANK, N. J. 07701	Edmund H. Gaunt, Jr., AIA	CS251	
PROJECT NO. 9630			DESANTIS		TEL 908 842 8071	Robert F. DeSantis, AIA	CS325	Union County PLAINFIELD/NPLAINFIELD, NEW JERSEY
			ARCHITECTS		FAX 908 747 7614			
SCALE: 1/8" = 1'-0" (1: NOT SCALE DRAWING)			DATEPLOT E16	DRAWN LAT				

E-3



THIRD FLOOR PLAN

DATABASE NAME jpsm.d

E-4	DATE 25 SEPT 96	REV. DATE	DESCRIPTION	KAPLAN GALINT DESANTIS ARCHITECTS	241 MAPLE AVENUE	Gary T. Kaplan, AIA	CS317	T.W.C.A. Union County PLANFIELD/NPLANFIELD. NEW JERSEY
	9630		EXISTING THIRD FLOOR PLAN		RED BANK, N. J. 07701	Edmund H. Galint, Jr., AIA	CS251	
			SCALE 1/8" = 1'-0" (SEE NOTE SCALE DRAWING)	DATE EHS	Drawn LAT	TEL 908 842 8021	Robert F. DeSantis, AIA	CS325
						FAX 908 747 7634		