



THE CASTLE

1

RAMONA, CALIFORNIA

214

TAKEN BY RUTH S. MEYER

SEPTEMBER 6, 1977

NEGATIVES IN PHOTOGRAPHER'S POSSESSION

ENTRANCE DRIVEWAY -
LOOKING NW

(TAKEN ABOUT MID-
WAY ALONG DRIVE-
WAY, SHOWING
STONE ENTRANCE
PILLARS)

San Diego County

NOV 18 1977

PROPERTY OF THE NATIONAL REGISTER



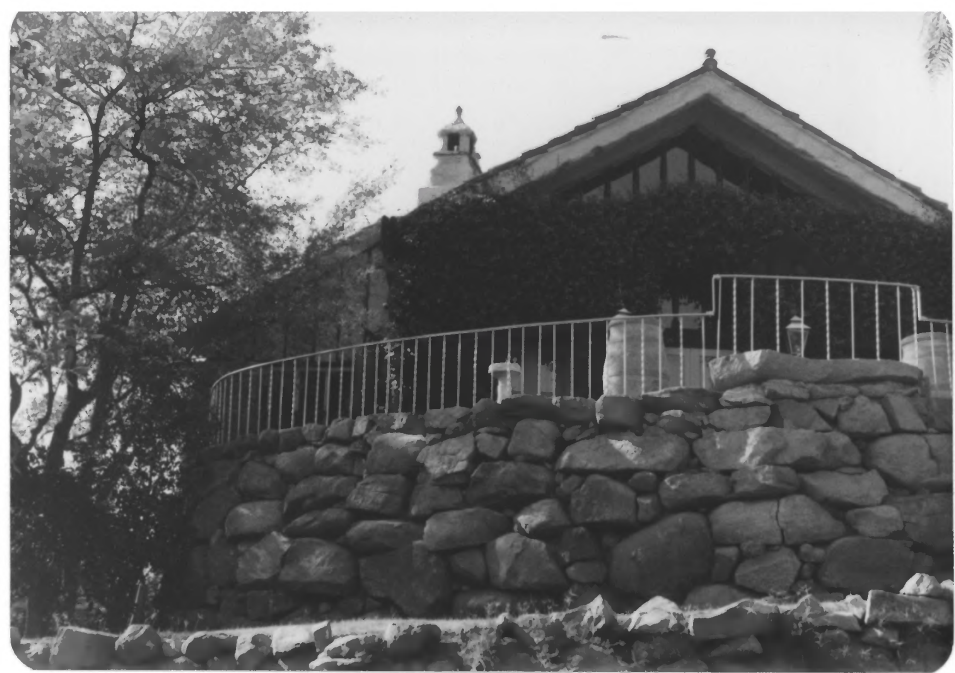
#2

THE CASTLE
RAMONA, CALIFORNIA
TAKEN BY RUTH S MEYER
SEPTEMBER 6, 1977
NEGATIVE IN PHOTO-
GRAPHER'S POSSESSION
"VEGETATION MOUNT" WITH
LOW WALL (ON WEST
SIDE OF CASTLE) —
LOOKING NW

San Diego County

NOV 18 1977

PROPERTY OF THE NATIONAL REGISTER



THE CASTLE
RAMONA, CALIFORNIA
TAKEN BY RUTH S. MEYER
SEPTEMBER 6, 1977
NEGATIVE IN PHOTOGRAPHER'S POSSESSION
CASTLE BALCONY -
LOOKING NORTH
San Diego County

#3

1/14

PROPERTY OF THE NATIONAL REGISTER
18 1977



#4
814

THE CASTLE
RAMONA, CALIFORNIA
TAKEN BY RUTH MEYER
SEPTEMBER 6, 1977
NEGATIVE IN PHOTO-
GRAPHER'S POSSESSION
S. ENTRANCE BALCONY
LOOKING WEST
San Diego County

PROPERTY OF THE NATIONAL ARCHIVES

NOV 18 1977



#5

14

THE CASTLE
 RAMONA, CALIFORNIA
 TAKEN BY RUTH MEYER
 SEPTEMBER 1977
 NEGATIVE PHOTO -
 GRAPHER'S POSSESSION
 GENERAL VIEW OF S.
 END OF CASTLE;
 DOORWAY ON RIGHT
 LOOKING NW
 San Diego County
 NOV 18 1977

PROPERTY OF THE NATIONAL ARCHIVE



THE CASTLE
RAMONA, CALIFORNIA
TAKEN BY RUTH S MEYER
SEPTEMBER 6, 1977
NEGATIVE IN PHOTO-
GRAPHER'S POSSESSION
ENTRANCE DOORWAY
LOOKING WEST
San Diego County

REGISTER #6
14
PROPERTY OF THE NATIONAL ARCHIVE
1 8 1977



THE CASTLE
RAMONA, CALIFORNIA
TAKEN BY RUTH S. MEYER
SEPTEMBER 6, 1977

NEGATIVE & PHOTO -
GRAPHER'S POSSESSION
LARGE (72 FOOT LONG)
LIVING ROOM -
LOOKING SOUTH
Diago County

NOV 18 1977

MAR 30 1978

PROPERTY OF THE NATIONAL REGISTER # 7
814



#8

14

THE CASTLE
RAMONA, CALIFORNIA
TAKEN BY RUTH S. MEYER
SEPTEMBER 6, 1977
NEGATIVE IN PHOTO-
GRAPHER'S POSSESSION
LARGE LIVING ROOM
LOOKING NORTH
SAN Diego County
NOV 18 1977

PROPERTY OF THE NATIONAL REGISTER



THE NATIONAL REGISTER

9
214

THE CASTLE
RAMONA, CALIFORNIA
TAKEN BY RUTH S. MEYER
SEPTEMBER 21 1977
NEGATIVE IN PHOTO-
GRAPHER'S POSSESSION

SWIMMING POOL AND
SUMMER HOUSE
LOOKING EAST
San Diego County

NOV 18 1977



MAR 30 1978

#10

THE CASTLE
RAMONA, CALIFORNIA
TAKEN BY RUTH MEYER
SEPTEMBER, 1977
NEGATIVE IN PHOTO-
GRAPHER'S POSSESSION
NORTH PORTION OF
CASTLE (FROM DOORWAY
NORTH) + WINDMILL -
LOOKING WEST
ACROSS POOL
(PATIO BEHIND LIGHT
AND HEDGE)

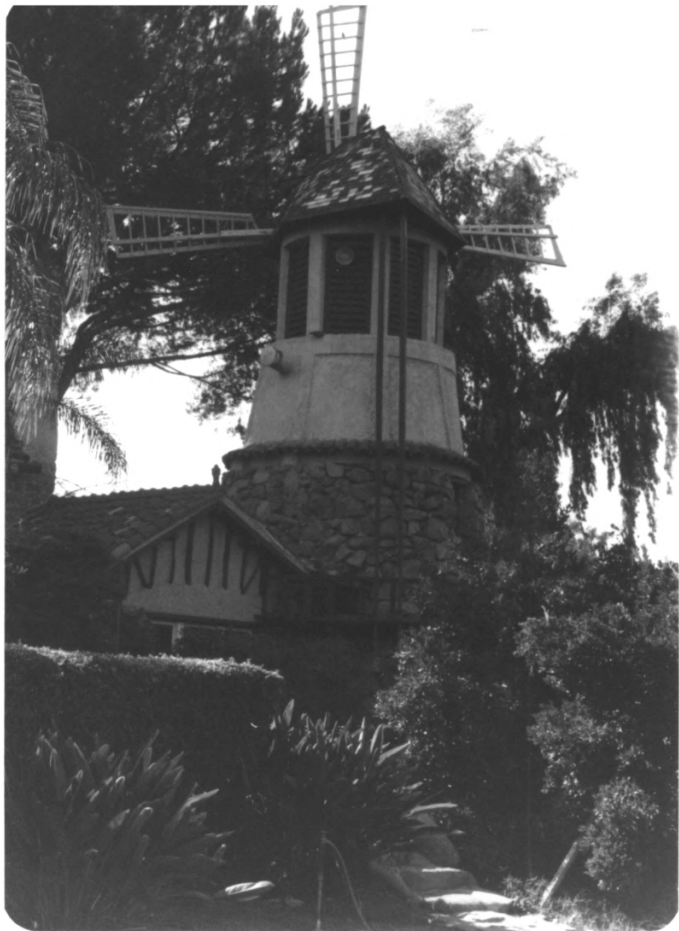
San Diego County, NOV 18 1977



THE CASTLE
RAMONA, CALIFORNIA
TAKEN BY RUTH MEYER
SEPTEMBER, 1977
NEGATIVE IN PHOTOGRAPHER'S POSSESSION
PATIO FOUNTAIN -
LOOKING SOUTH
SAN DIEGO COUNTY

NOV 18 1977

MAR 30 1978



#12
214

THE CASTLE
RAMONA, CALIFORNIA
TAKEN BY RUTH MEYER
SEPTEMBER 6, 1977
NEGATIVE IN PHOTO-
GRAPHER'S POSSESSION
DUTCH WINDMILL
LOOKING NW
SAN DIEGO COUNTY

PROPERTY OF THE NATIONAL ARCHIVES

NOV 18 1977

MAR 30 1978

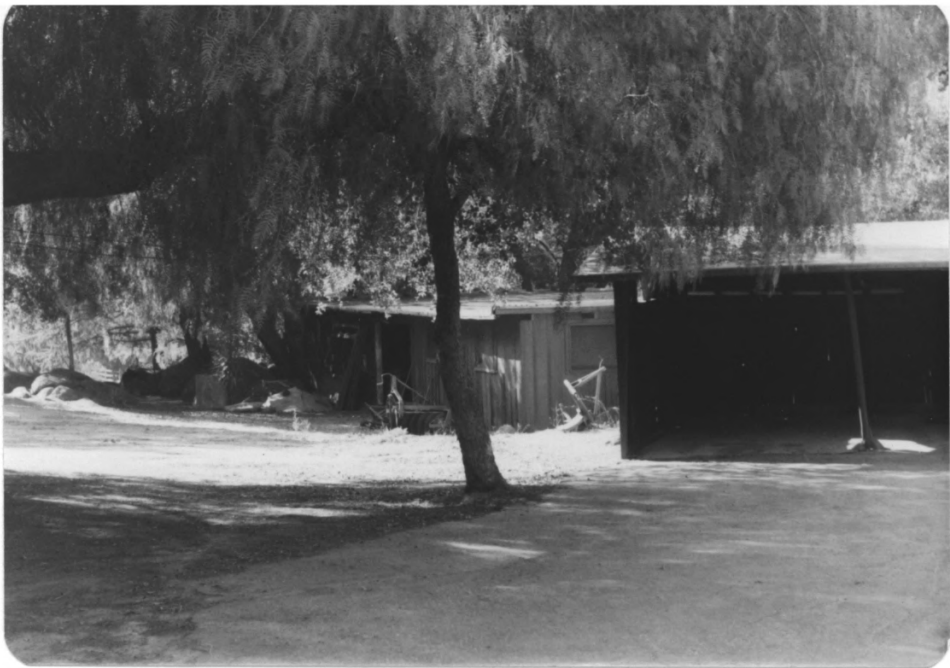


THE CASTLE
RAMONA, CALIFORNIA
TAKEN BY RUTH MEYER
SEPTEMBER, 1977
NEGATIVE PHOTO-
GRAPHER'S POSSESSION
STONE GARAGE (AND
BASE OF WINDMILL)
LOOKING NORTH
SAN DIEGO COUNTY

NOV 18 1977

MAR 30 1978

PROPERTY OF THE NATIONAL REGISTER #13
214



14

THE CASTLE
RAMONA, CALIFORNIA
TAKEN BY RUTH MEYER
SEPTEMBER 1977
NEGATIVE IN PHOTO-
GRAPHER'S POSSESSION
FRAME GARAGE AND
SHED - LOOKING
WEST
SAN Diego County
NOV 18 1977

PROPERTY OF THE NATIONAL REGISTER

MAR 30 1978