

NATIONAL REGISTER OF HISTORIC PLACES REGISTRATION FORM

This form is for use in nominating or requesting determinations of eligibility for individual properties or districts. See instructions in "Guidelines for Completing National Register Forms" (National Register Bulletin 16). Complete each item by marking "X" in the appropriate box or by entering the requested information. If an item does not apply to the property being documented, enter "N/A" for "not applicable." For functions, styles, materials, and areas of significance, enter only the categories and subcategories listed in the instructions. For additional space use continuation sheets (Form 10-900a). Type all entries.

1. Name of Property

historic name Mineral Bluff Depot
other names/site number N/A

2. Location

street & number 150 Railroad Avenue
city, town Mineral Bluff () vicinity of
county Fannin code GA 111
state Georgia code GA zip code 30559

() not for publication

3. Classification

Ownership of Property:

- () private
- () public-local
- (X) public-state
- () public-federal

Category of Property:

- (X) building(s)
- () district
- () site
- () structure
- () object

Number of Resources within Property:

Contributing

Noncontributing

buildings	1	0
sites	0	0
structures	0	0
objects	0	0
total	1	0

Contributing resources previously listed in the National Register: N/A

Name of previous listing: N/A

Name of related multiple property listing: N/A

4. State/Federal Agency Certification

As the designated authority under the National Historic Preservation Act of 1966, as amended, I hereby certify that this nomination meets the documentation standards for registering properties in the National Register of Historic Places and meets the procedural and professional requirements set forth in 36 CFR Part 60. In my opinion, the property meets the National Register criteria. () See continuation sheet.

Richard Coates
Signature of certifying official

1-9-07
Date

W. Ray Luce
Historic Preservation Division Director
Deputy State Historic Preservation Officer

In my opinion, the property () meets () does not meet the National Register criteria. () See continuation sheet.

Signature of commenting or other official

Date

State or Federal agency or bureau

5. National Park Service Certification

I, hereby, certify that this property is:

entered in the National Register

Eden H. Beall 3.1.07

determined eligible for the National Register

determined not eligible for the National Register

removed from the National Register

other, explain:

see continuation sheet

[Signature]
Keeper of the National Register Date

6. Function or Use

Historic Functions:

TRANSPORTATION: rail-related

Current Functions:

WORK IN PROGRESS

7. Description

Architectural Classification:

NO STYLE

Materials:

foundation	STONE BRICK
walls	BRICK
roof	METAL
other	N/A

Description of present and historic physical appearance:

The city of Mineral Bluff is located in Fannin County in central North Georgia approximately five miles south of the Georgia-Tennessee state line and five miles north of the city of Blue Ridge, the county seat.

The Mineral Bluff Depot is located on the (now abandoned) CSX rail line in downtown Mineral Bluff. The one-story, rectangular, brick building was constructed in 1887 as a passenger and freight depot (photographs 1-5). The building has a side-gable metal roof with wood knee braces and round-arched window and door openings (photographs 2, 3, and 6). There are brick pilasters separating the bays and at the corners of the building (photographs 2, 5, and 6). The passenger entrance faces Railroad Avenue and the freight entrance and platform face the rail line. The original windows, transoms, and entrance doors are no longer extant.

Historically, the interior of the depot was divided into a passenger waiting room, office, and freight room; due to deterioration and alterations, historic interior finishes or materials were removed during recent stabilization activities preceding the proposed rehabilitation of the building (photographs 8-11).

In federal fiscal year 1996, a Transportation Enhancement Activity (TEA) grant was given for the rehabilitation of the depot. A concrete floor was poured as part of the project (photograph 10).

8. Statement of Significance

Certifying official has considered the significance of this property in relation to other properties:

nationally statewide locally

Applicable National Register Criteria:

A B C D

Criteria Considerations (Exceptions): N/A

A B C D E F G

Areas of Significance (enter categories from instructions):

TRANSPORTATION

Period of Significance:

1887-1956

Significant Dates:

1887—construction of the depot

Significant Person(s):

N/A

Cultural Affiliation:

N/A

Architect(s)/Builder(s):

N/A

National Register of Historic Places Continuation Sheet

Section 8—Statement of Significance

Statement of significance (areas of significance)

Attempts to establish a railroad through north Georgia were made as early as 1846 when the "Etowah Railroad" was chartered by the state legislature, but never built. In 1854, a second charter was granted for the "Ellijay Railroad" that was also not built. In 1859, a state funded bill was submitted for the "Marietta, Canton, and Ellijay Railroad" but the beginning of the Civil War in 1861 put plans for the north Georgia line on hold. In 1870, the state legislature authorized funding for the "Marietta and North Georgia Railroad," and by 1879, the railroad was constructed to Canton. The Mineral Bluff Depot was built in 1887, the year after the Marietta and North Georgia Railroad was extended through Fannin County, to serve as the passenger and freight depot. Passenger service ended in 1949, and the depot was manned by an agent until the late 1950s when freight transport ended.

The Mineral Bluff Depot is significant in the area of transportation for its direct association with passenger and freight transportation in Mineral Bluff. As the only railroad-related building in Mineral Bluff, the depot represents the importance of the railroad to the history of the town. With the ability to move freight through the north Georgia mountains, the town of Mineral Bluff grew and prospered in the late 19th and early 20th centuries. The major industries were the Union Tannery and timber and mining companies, all of which benefited from the railroad.

National Register Criteria

The Mineral Bluff Depot is eligible for listing in the National Register of Historic Places under Criterion A for its direct association with rail transportation in Mineral Bluff.

Criteria Considerations (if applicable)

N/A

Period of significance (justification)

The period of significance begins in 1887 with the construction of the depot and ends in 1956, the end of the historic period, to include the time period when the depot was used for passenger travel (ended in 1949) and freight transportation (ended in the late 1950s).

Contributing/Noncontributing Resources (explanation, if necessary)

There is only one building on the property, the depot, which is contributing.

National Register of Historic Places Continuation Sheet

Section 8—Statement of Significance

Developmental history/historic context (if appropriate)

NOTE: The following developmental history was prepared by Elma Ettman and edited by Gretchen Brock, National Register Coordinator, Historic Preservation Division, “Mineral Bluff Depot,” draft National Register of Historic Places Form, July 23, 2004. On File at the Historic Preservation Division, Georgia Department of Natural Resources, Atlanta, Georgia.

Mineral Bluff is located in the central part of Fannin County, 92 miles north of Atlanta, and five miles north of Blue Ridge, the county seat. This part of Fannin County was first settled for agricultural purposes and Mineral Bluff is one of the county's oldest towns.

The Marietta and North Georgia Railroad completed its route from Marietta, the county seat of Cobb County, to Blue Ridge in 1886, and the railroad came through Mineral Bluff in 1887.

Attempts to establish a railroad for North Georgia were made as early as 1846 when the “Etowah Railroad” was chartered by the state legislature, but was never built. In 1854, a second railroad obtained its charter from the legislature, but the “Ellijay Railroad” was not built either. In 1859, the name changed to the “Marietta, Canton and Ellijay Railroad” and a state-funding bill for its establishment was introduced in the legislature. Unfortunately, the Civil War began in 1861, and all plans for the railroad were put on hold.

After the Civil War, interest in a railroad for North Georgia was renewed. In 1870, the legislature authorized loan funding for the Marietta, Canton and Ellijay line. The railroad's name changed again with the new name being the “Marietta and North Georgia Railroad.” Local fundraising began in November 1879, and the railroad opened in Canton, the county seat of Cherokee County.

The railroad came through Mineral Bluff in 1887 and the Mineral Bluff Depot was built by the Marietta and North Georgia Railroad to serve as a passenger and freight depot. Mineral Bluff was at this time a well-developed town, although unincorporated. In 1898, the city of Mineral Bluff with a population of approximately 300 was incorporated.

The depot was the focal point for transporting local items including lumber and other agricultural products. The depot was manned by an agent and had full-fledged service until the late 1950s. Passenger service was terminated on March 1, 1949.

During the historical period, Mineral Bluff was mainly an agricultural and mining town. Industries in the town included the Union Tannery with its rail spur, various timber companies, and marble and slate mines.

Mineral Bluff Depot is currently owned by the Georgia Department of Transportation and leased to Fannin County. The depot is currently being rehabilitated through a Transportation Enhancement Activity (TEA) grant for use as a railroad museum and excursion destination.

9. Major Bibliographic References

Barclay, R.E. The Railroad Comes to Ducktown. 1973.

Dyer, Dale, and Ethelene Jones. Facets of Fannin: A History of Fannin County, Georgia. 1989.

Ettman, Elma. "Mineral Bluff Depot," draft National Register of Historic Places Form, July 23, 2004.
On File at the Historic Preservation Division, Georgia Department of Natural Resources,
Atlanta, Georgia.

North Georgia Journal. Summer 1990 and Spring 1996.

Russell, Edith. Fannin County's Centennial (1854-1854). 1954, 2004.

Thompson, Kathy. In Touch with the Past. 1982.

Previous documentation on file (NPS): (X) N/A

- preliminary determination of individual listing (36 CFR 67) has been requested**
- preliminary determination of individual listing (36 CFR 67) has been issued**
date issued:
- previously listed in the National Register**
- previously determined eligible by the National Register**
- designated a National Historic Landmark**
- recorded by Historic American Buildings Survey #**
- recorded by Historic American Engineering Record #**

Primary location of additional data:

- State historic preservation office**
- Other State Agency**
- Federal agency**
- Local government**
- University**
- Other, Specify Repository:**

Georgia Historic Resources Survey Number (if assigned): N/A

10. Geographical Data

Acreage of Property Less than one acre.

UTM References

A) Zone 16 Easting 748534 Northing 3866567

Verbal Boundary Description

The National Register boundary is indicated on the attached site plan drawn to scale with a heavy, black line.

Boundary Justification

The proposed boundary is to the north edge of the pavement on Railroad Avenue, 15 feet from either end of the building, and to the south edge of the railroad track/bed.

11. Form Prepared By

State Historic Preservation Office

name/title Gretchen A. Brock/National Register Coordinator
organization Historic Preservation Division, Georgia Department of Natural Resources
mailing address 34 Peachtree Street, Suite 1600
city or town Atlanta **state** Georgia **zip code** 30303
telephone (404) 656-2840 **date** December 14, 2006
e-mail gretchen_brock@dnr.state.ga.us

Consulting Services/Technical Assistance (if applicable) () not applicable

name/title Elma Ettman
organization N/A
mailing address PO Box 1
city or town Blue Ridge **state** Georgia **zip code** 30513
telephone (706) 838-4727
e-mail N/A

- () **property owner**
(X) **consultant**
() **regional development center preservation planner**
() **other:**

Property Owner or Contact Information

name (property owner or contact person) Richard Vollrath, Chair
organization (if applicable) Fannin County Board of Commissioners
mailing address 400 West Main Street
city or town Blue Ridge **state** Georgia **zip code** 30513
e-mail (optional) N/A

National Register of Historic Places Continuation Sheet

Photographs



Name of Property: Mineral Bluff Depot
City or Vicinity: Mineral Bluff
County: Fannin
State: Georgia
Photographer: James R. Lockhart
Negative Filed: Georgia Department of Natural Resources
Date Photographed: April 2006

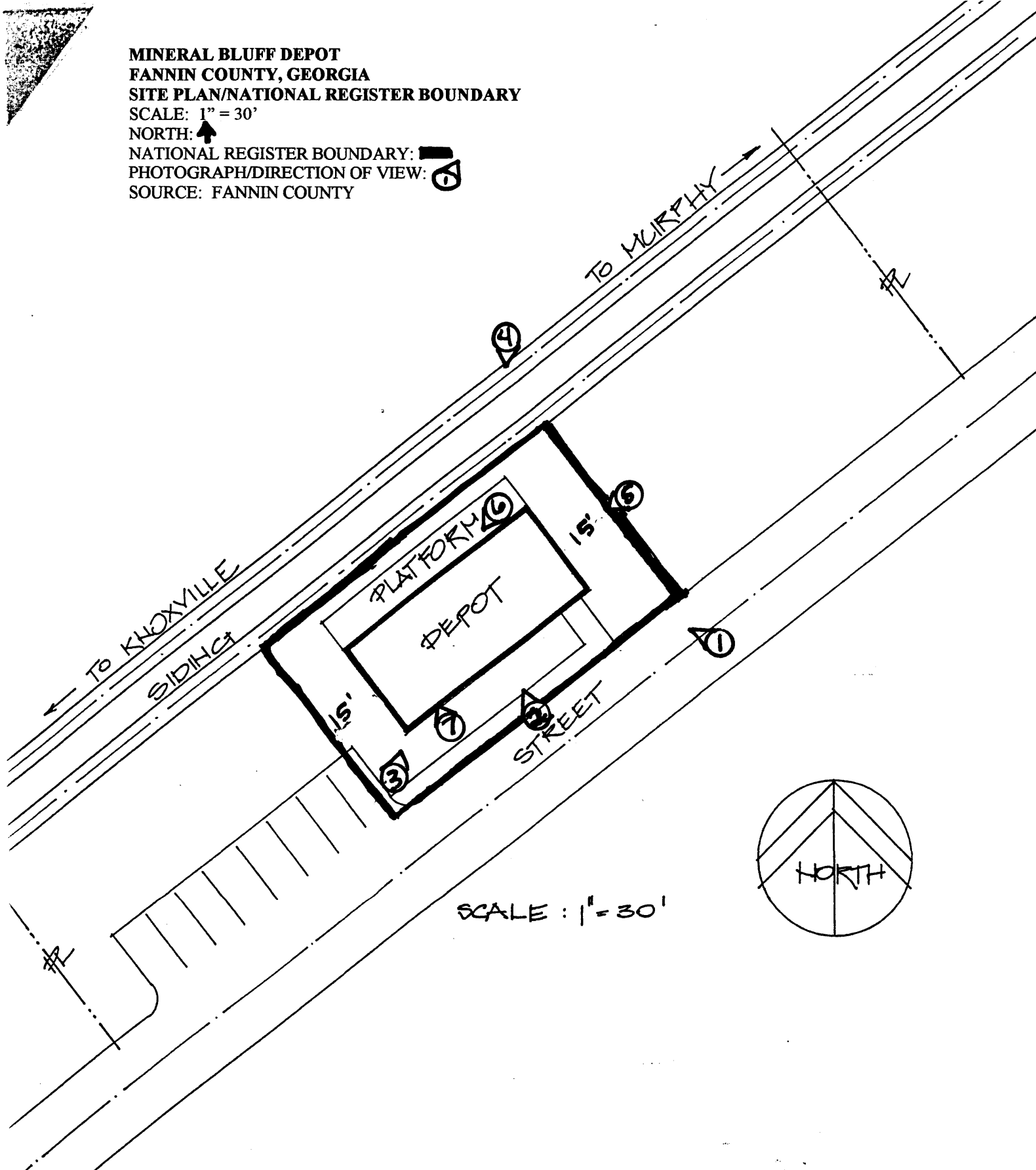
Description of Photograph(s):

Number of photographs: 12

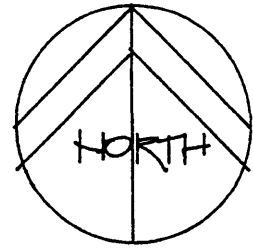
1. Street-side (south) and east façades; photographer facing west.
2. Street-side (south) façade; photographer facing northwest.
3. Street-side (south) and west facades; photographer facing north.
4. Trackside (north) and east facades; photographer facing south.
5. West façade; photographer facing southwest.
6. Detail of trackside of depot and platform; photographer facing southwest.
7. Detail of freight door on south façade; photographer facing northwest.
8. Interior, former freight room; photographer facing southwest.
9. Interior of depot; photographer facing east.
10. Interior of depot; photographer facing west.
11. Interior, detail of freight door; photographer facing northwest.

(HPD WORD form version 11-03-01)

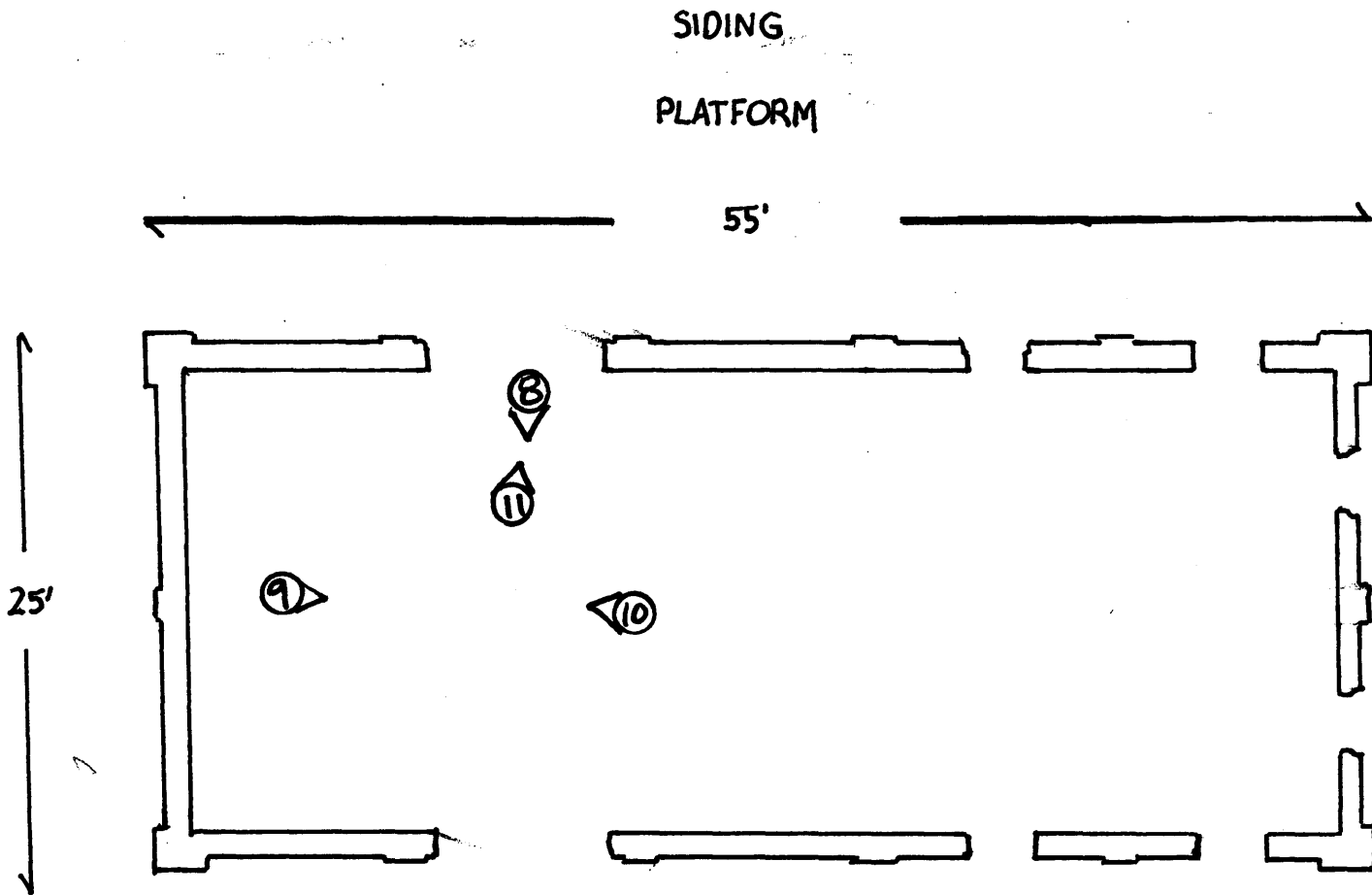
MINERAL BLUFF DEPOT
FANNIN COUNTY, GEORGIA
SITE PLAN/NATIONAL REGISTER BOUNDARY
SCALE: 1" = 30'
NORTH: ↑
NATIONAL REGISTER BOUNDARY: 
PHOTOGRAPH/DIRECTION OF VIEW: 
SOURCE: FANNIN COUNTY





SCALE : 1" = 30'



Milan Vancura Architect
754 Juniper Street, #8
Atlanta, Georgia 30308



MINERAL BLUFF DEPOT
 FANNIN COUNTY, GEORGIA
 CURRENT FLOOR PLAN
 SCALE: NOT TO SCALE
 NORTH: 
 PHOTOGRAPH/DIRECTION OF VIEW: 
 SOURCE: FANNIN COUNTY

DEPOT
 MINERAL BLUFF GA.

DEPOT AVE.

To MURKIN

L. & N. RAIL TRACK. MERCY BRANCH

To KNOXVILLE

SIDING

11'-9 1/2"

6'-6"

8'

PLATFORM.

0'-3 1/2"

0'-9"

0'-11"

21'-3"

WAITING ROOM.

10'-10" x 21'-3"

T.W.

Ceiling 13'-4 1/2" high.

OFFICE

9'-0" x 21'-3"

FREIGHT ROOM.

21'-3" x 31'-0"

21'-3"

BRICK DEPOT AT
MINERAL BLUFF,
GA.

SCALE 1/8"=1'. JUNE 27, 08.

OFFICE ASST ENGR, ETOWAH.

S. 5 59 100

MINERAL BLUFF DEPOT
FANNIN COUNTY, GEORGIA
HISTORIC FLOOR PLAN

SCALE: NOT TO SCALE

NORTH: 

PHOTOGRAPH/DIRECTION OF VIEW:

SOURCE: FANNIN COUNTY