





Photograph 1a

Photographer: Dave Hester, NPS

Date: 04/17/91

Location: Wounded Knee, South Dakota

View looking EAST from the head of
the ravine towards the massacre
site

NOV 25 1992









































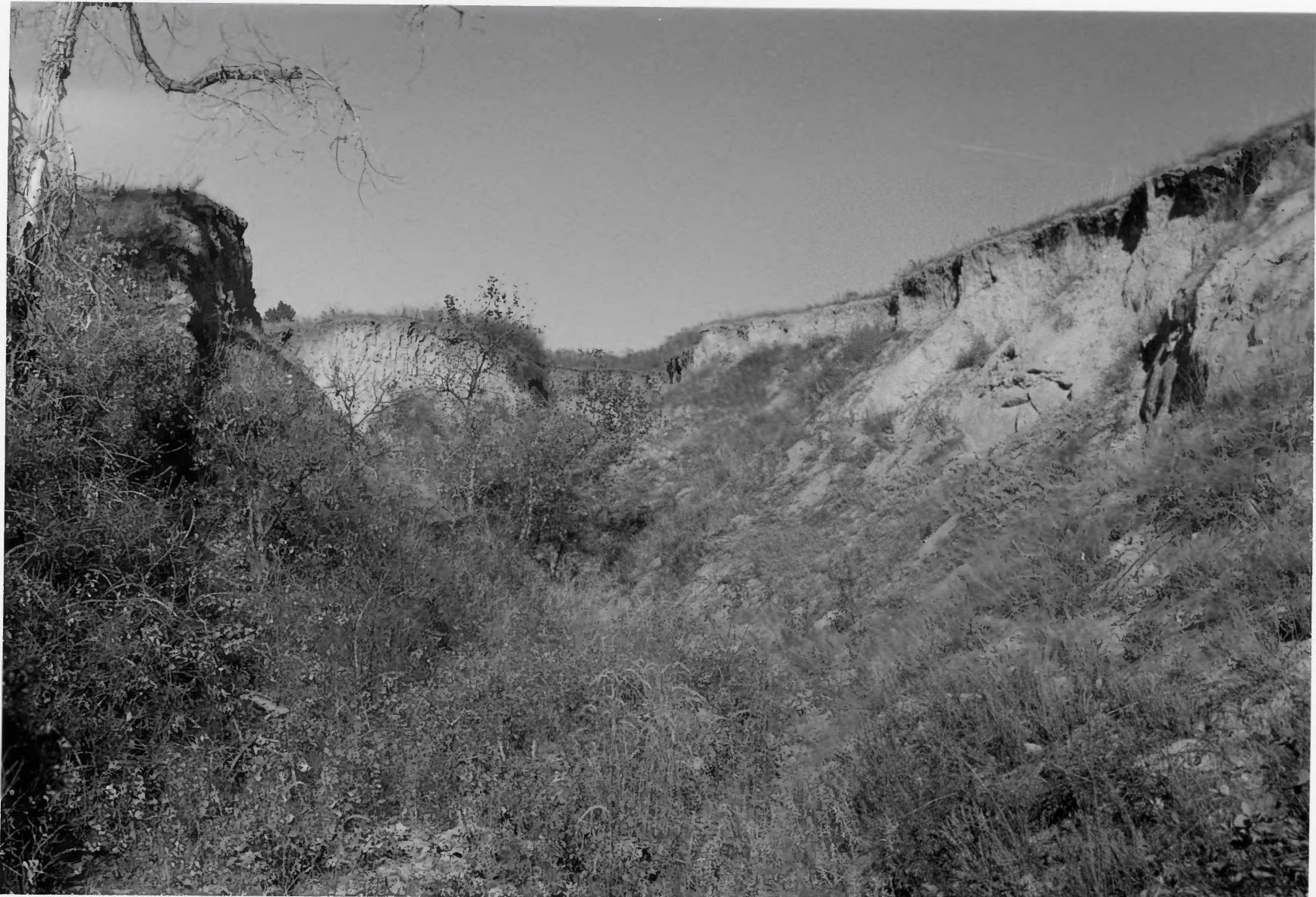


























View of Wounded Knee battle-field
2 days after the fight. P.R. Agency. S.D.



Birds Eye View of Battle Field at
Wounded Knee S.D. looking S.W.
Copyrighted Jan 1911 by the War Photo Co
Chadron Neb





Birds Eye View
of the Battlefield
after the Battle of
Wounded Knee
1890

*View of Wounded Knee battle-field after the fight
Lieutenant Cloeman of 9th. Cavalry, mounted*



Mo. 1384

Indians of Wounded Knee Canyon



Birds Eye View of Canyon at
Wounded Knee S. D. copy Richard VanLe.
New Western Photo Co
Cheyenne Neb. 1891



Burial of the Dead
at the Battle of Wounded Knee S.D.
copy Righted Jan 31 1891 by the
North Western Photo Co
Chadron Neb
No 1



© M. L. R.



PUBLISHED BY
FISHER & Co,
DEADWOOD S.DAK

THE GREAT AND LAST HOSTILE INDIAN CAMP ON BRULE RIVER, BEFORE THE "WOUNDED KNEE MASSACRE" IN 1891.

"The Great and Last Hostile Indian Camp on Brule River
before the Wounded Knee Massacre in 1891." Published by
Fishel & Co., Deadwood, South Dakota. Wittemann Collec-
tion, Library of Congress.



3687. "Gen. Brook's Camp" Camp near
Fine Ridge, S. D., Jan. 17, '91. Photo and copy-
right '91. by Grabbill, Deadwood, S. D.

Camp of troops under General John R. Brooke, near Pine Ridge, South Dakota, January 17, 1891. Photograph copy-righted 1891 by Grabill, of Deadwood, ~~San~~ S. D. Collections of the Library of Congress.



3637. "Gen. Brook's Camp" Camp near
Pine Ridge, S. D., Jan. 17, '91. Photo and copy
right '91. by Grabbill, Deadwood, S. D.

Wounded Knee Battlefield

General Brooke's Camp

Jan 17, 1891

Photo by. Grubbitt, 1891, Deadwood S.D.

10-15-66 D.O.E.