

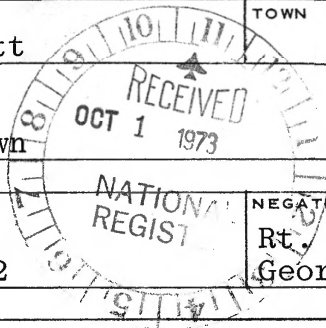


UNITED STATES DEPARTMENT OF THE INTERIOR
NATIONAL PARK SERVICE

**NATIONAL REGISTER OF HISTORIC PLACES
PROPERTY PHOTOGRAPH FORM**

(Type all entries - attach to or enclose with photograph)

1. NAME		
COMMON	AND/OR HISTORIC	NUMERIC CODE <i>(Assigned by NPS)</i>
Robert Sanders House		OCT 15 1973
2. LOCATION		
STATE	COUNTY	TOWN
Kentucky	Scott	Georgetown
STREET AND NUMBER		
U.S. 25, 2 miles south of Georgetown		
3. PHOTO REFERENCE		
PHOTO CREDIT	DATE	NEGATIVE FILED AT
Ann B. Bevins	1972	Rt. 4 - Lexington Pike Georgetown, Kentucky
4. IDENTIFICATION		
DESCRIBE VIEW, DIRECTION, ETC.		



Taken from the east, showing the front and the unaltered end of this house.

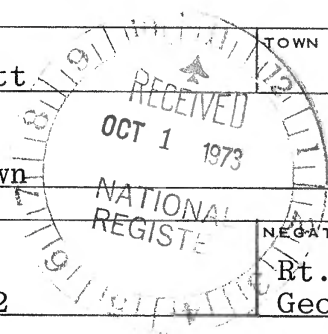


UNITED STATES DEPARTMENT OF THE INTERIOR
NATIONAL PARK SERVICE

NATIONAL REGISTER OF HISTORIC PLACES
PROPERTY PHOTOGRAPH FORM

(Type all entries - attach to or enclose with photograph)

1. NAME		
COMMON	AND/OR HISTORIC	NUMERIC CODE (Assigned by NPS)
Robert Sanders House		906 15 1973
2. LOCATION		
STATE	COUNTY	TOWN
Kentucky	Scott	Georgetown
STREET AND NUMBER		
U.S.25, 2 miles south of Georgetown		
3. PHOTO REFERENCE		
PHOTO CREDIT	DATE	NEGATIVE FILED AT
Ann B. Bevins	1972	Rt. 4 - Lexington Pike Georgetown, Kentucky
4. IDENTIFICATION		
DESCRIBE VIEW, DIRECTION, ETC.		



Taken from the east at the west end of the Sanders house, showing old stone barn with some walls having been relaid, windows having been added at the time of restoration.



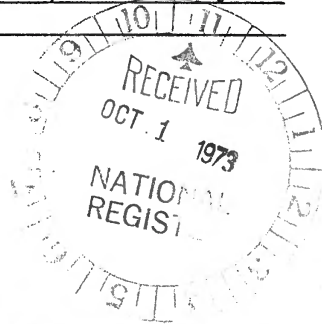
UNITED STATES DEPARTMENT OF THE INTERIOR
NATIONAL PARK SERVICE

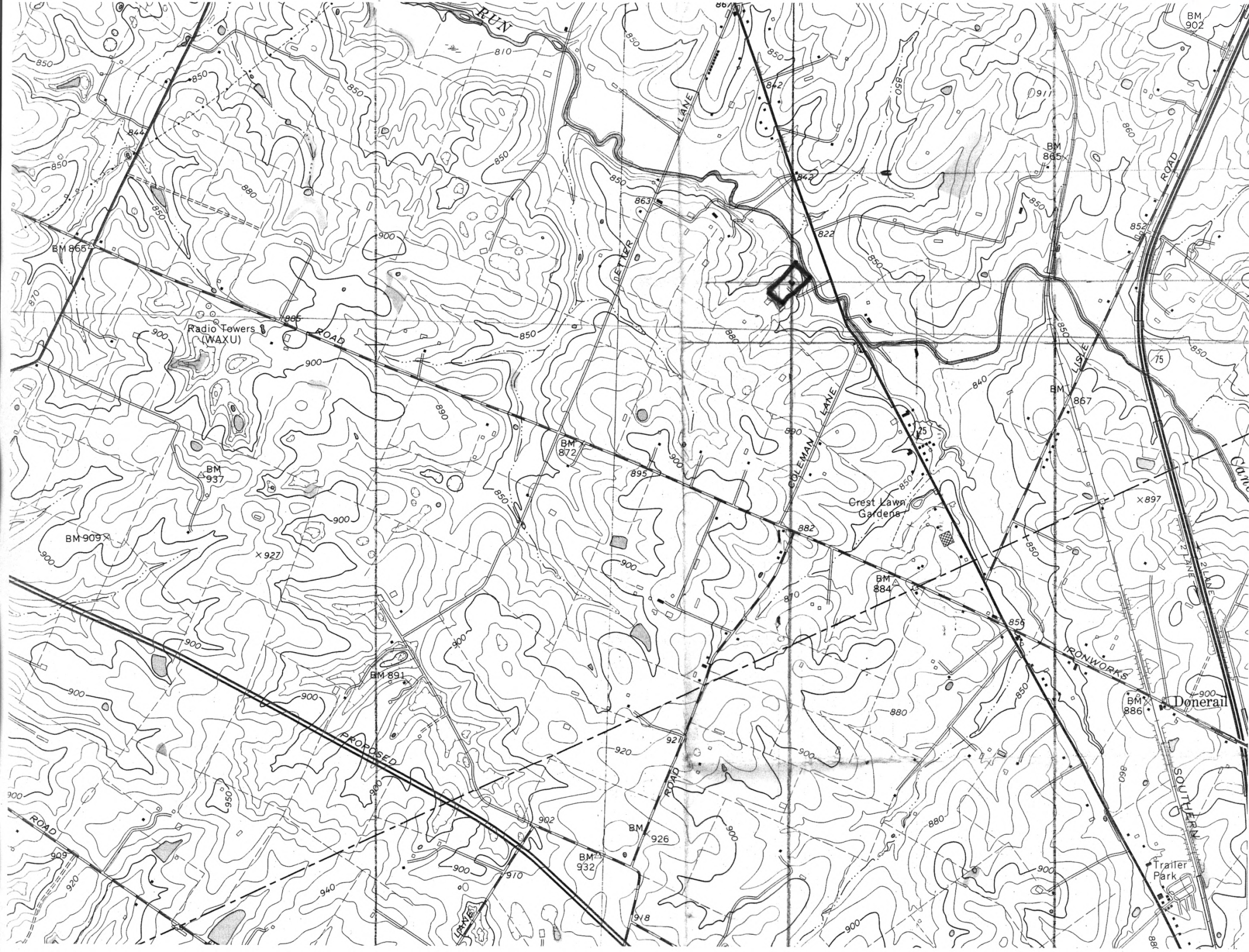
NATIONAL REGISTER OF HISTORIC PLACES
PROPERTY PHOTOGRAPH FORM

(Type all entries - attach to or enclose with photograph)

1. NAME		
COMMON	AND/OR HISTORIC	NUMERIC CODE (Assigned by NPS)
Robert Sanders House		
2. LOCATION		
STATE	COUNTY	TOWN
Kentucky	Scott	Georgetown
STREET AND NUMBER		
U.S.25, 2 miles south of Georgetown		
3. PHOTO REFERENCE		
PHOTO CREDIT	DATE	NEGATIVE FILED AT
Ann B. Bevins	1972	Rt. 4 - Lexington Pike Georgetown, Kentucky
4. IDENTIFICATION		
DESCRIBE VIEW, DIRECTION, ETC.		

Mantelpiece and shelving on east parlor end wall.





Radio Towers
(WAXU)

Crest Lawn
Gardens

Doneral

Trailer Park

BM 866

BM 937

BM 909

BM 891

BM 872

BM 932

BM 926

BM 884

BM 865

BM 867

BM 886

BM 902

844

880

850

810

850

850

842

822

850

891

860

852

900

900

890

850

895

890

882

840

850

850

900

900

900

850

900

850

850

850

850

900

900

900

850

900

880

880

850

900

900

900

900

850

920

900

880

850

900

900

900

900

850

918

900

880

850

900

900

900

900

850

918

900

880

850

900

900

900

900

850

918

900

880

850

900

900

900

900

850

918

900

880

850

900