



Mark Twain House, 1974

Hartford Conn.

South side, main entrance,

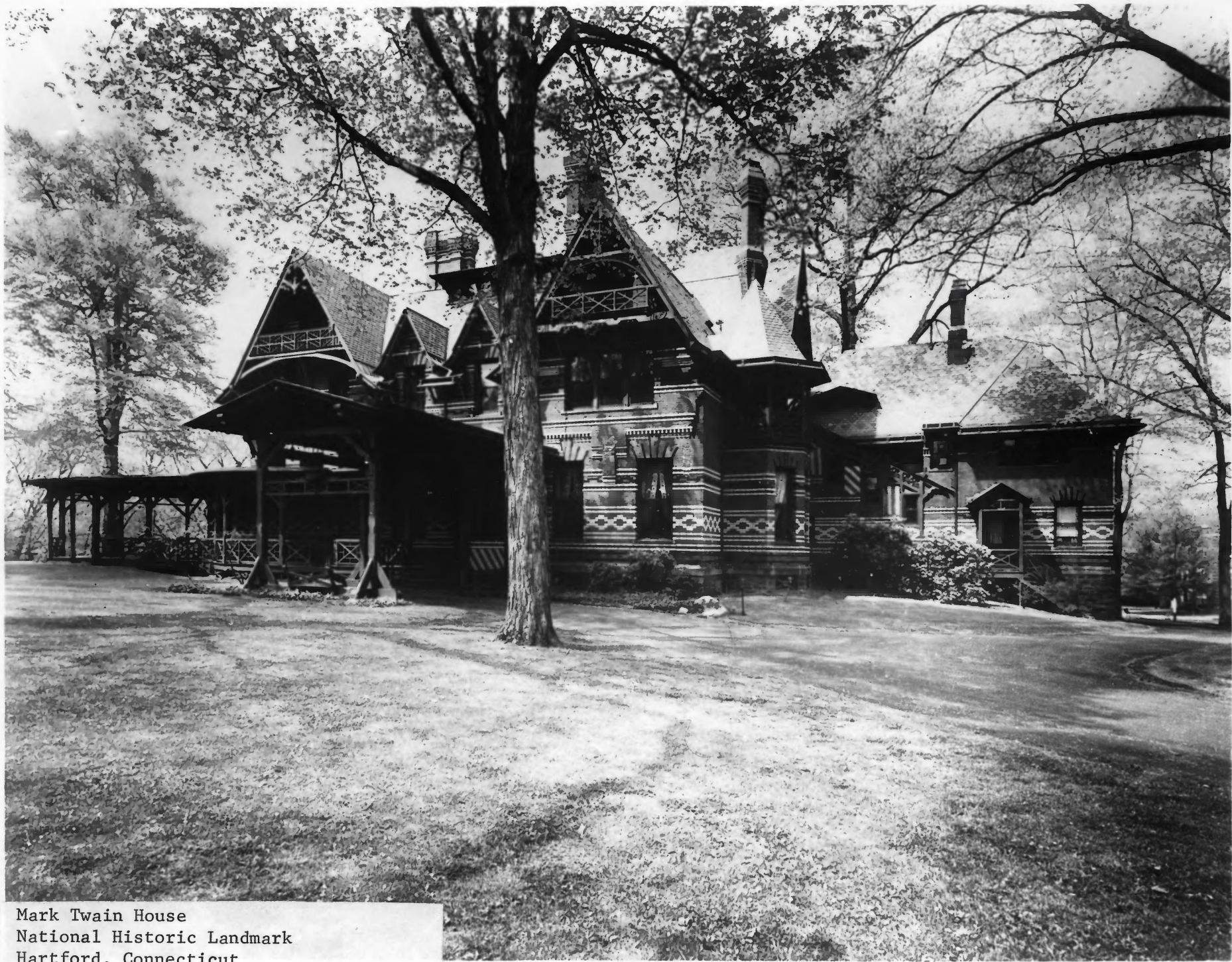
Carriage house in rear



Mark Twain House 1974

Hartford Conn

SE view showing the "ombra"
and porte cochère



Mark Twain House
National Historic Landmark
Hartford, Connecticut

UNITED STATES DEPARTMENT OF THE INTERIOR
NATIONAL PARK SERVICE

**NATIONAL REGISTER OF HISTORIC PLACES
PROPERTY PHOTOGRAPH FORM**

FOR NPS USE ONLY

RECEIVED

DATE ENTERED

SEE INSTRUCTIONS IN *HOW TO COMPLETE NATIONAL REGISTER FORMS*
TYPE ALL ENTRIES ENCLOSE WITH PHOTOGRAPH

1 NAME

HISTORIC

Mark Twain House

AND/OR COMMON

2 LOCATION

CITY, TOWN
Hartford

____VICINITY OF

COUNTY
Hartford

STATE
Connecticut

3 PHOTO REFERENCE

PHOTO CREDIT Mark Twain Memorial

DATE OF PHOTO about 1965

NEGATIVE FILED AT Mark Twain Memorial, Hartford, Connecticut

4 IDENTIFICATION

DESCRIBE VIEW, DIRECTION, ETC. IF DISTRICT, GIVE BUILDING NAME & STREET

PHOTO NO.

East (front) facade



Mark Twain House

Hartford Conn.

1968 (before restoration)

Mark Twain's bedroom

second floor, northeast



Mark Twain House
Hartford, Conn.
pre 1971

pre restoration view of
the library and conservatory
taken from the north