

United States Department of the Interior
National Park Service

RECEIVED
FEB 02 1993

National Register of Historic Places
Registration Form

This form is for use in nominating or requesting determinations for individual properties and districts. See instructions in *How to Complete the National Register of Historic Places Registration Form* (National Register Bulletin 16A). Complete each item by marking "x" in the appropriate box or by entering the information requested. If an item does not apply to the property being documented, enter "N/A" for "not applicable." For functions, architectural classification, materials, and areas of significance, enter only categories and subcategories from the instructions. Place additional entries and narrative items on continuation sheets (NPS Form 10-900a). Use a typewriter, word processor, or computer, to complete all items.

1. Name of Property

historic name U.S. Post Office--Hazlehurst, Mississippi

other names/site number N/A

2. Location

street & number 130 Caldwell Drive N/A not for publication

city or town Hazlehurst N/A vicinity

state Mississippi code MS county Copiah code 029 zip code 39083

3. State/Federal Agency Certification

As the designated authority under the National Historic Preservation Act, as amended, I hereby certify that this nomination request for determination of eligibility meets the documentation standards for registering properties in the National Register of Historic Places and meets the procedural and professional requirements set forth in 36 CFR Part 60. In my opinion, the property meets does not meet the National Register criteria. I recommend that this property be considered significant nationally statewide locally. (See continuation sheet for additional comments.)

He Ree Odum, Historic Coordinator 9/21/92
Signature of certifying official/Title Date
United States Postal Service, Memphis District Service Center
State of Federal agency and bureau

In my opinion, the property meets does not meet the National Register criteria. (See continuation sheet for additional comments.)

Kenneth H. P. Pool JAN. 28, 1993
Signature of certifying official/Title Date
Deputy State Historic Preservation Officer
State or Federal agency and bureau

4. National Park Service Certification

I hereby certify that the property is:

- entered in the National Register.
 See continuation sheet.
- determined eligible for the National Register.
 See continuation sheet.
- determined not eligible for the National Register.
- removed from the National Register.
- other, (explain): _____

to Signature of the Keeper Date of Action
Ma J. M. Way 3/18/93

5. Classification

Ownership of Property
(Check as many boxes as apply)

Category of Property
(Check only one box)

Number of Resources within Property
(Do not include previously listed resources in the count.)

- private
- public-local
- public-State
- public-Federal

- building(s)
- district
- site
- structure
- object

Contributing	Noncontributing	
1		buildings
		sites
		structures
		objects
1	0	Total

Name of related multiple property listing
(Enter "N/A" if property is not part of a multiple property listing.)

Number of contributing resources previously listed in the National Register

Mississippi Post Offices
Thematic Resources, 1931-1941

0

6. Function or Use

Historic Functions
(Enter categories from instructions)

Current Functions
(Enter categories from instructions)

Government: Post Office

Government: Post Office

7. Description

Architectural Classification
(Enter categories from instructions)

Materials
(Enter categories from instructions)

Colonial Revival

foundation Brick

walls Brick

Limestone

roof Ceramic Tile

other N/A

Narrative Description

(Describe the historic and current condition of the property on one or more continuation sheets.)

Please see continuation sheets.

8. Statement of Significance

Applicable National Register Criteria

(Mark "x" in one or more boxes for the criteria qualifying the property for National Register listing.)

- A** Property is associated with events that have made a significant contribution to the broad patterns of our history.
- B** Property is associated with the lives of persons significant in our past.
- C** Property embodies the distinctive characteristics of a type, period, or method of construction or represents the work of a master, or possesses high artistic values, or represents a significant and distinguishable entity whose components lack individual distinction.
- D** Property has yielded, or is likely to yield, information important in prehistory or history.

Criteria Considerations

(Mark "x" in all the boxes that apply.)

Property is: N/A

- A** owned by a religious institution or used for religious purposes.
- B** removed from its original location.
- C** a birthplace or grave.
- D** a cemetery.
- E** a reconstructed building, object, or structure.
- F** a commemorative property.
- G** less than 50 years of age or achieved significance within the past 50 years.

Areas of Significance

(Enter categories from instructions)

Politics/Government

Art

Architecture

Period of Significance

1938

1939

Significant Dates

1938

1939

Significant Person

(Complete if Criterion B is marked above)

N/A

Cultural Affiliation

N/A

Architect/Builder

Office of Supervising Architect

Algernon Blair (Montgomery, Alabama)

Narrative Statement of Significance

(Explain the significance of the property on one or more continuation sheets.)

9. Major Bibliographical References

Bibliography

(Cite the books, articles, and other sources used in preparing this form on one or more continuation sheets.)

Previous documentation on file (NPS):

- preliminary determination of individual listing (36 CFR 67) has been requested
- previously listed in the National Register
- previously determined eligible by the National Register
- designated a National Historic Landmark
- recorded by Historic American Buildings Survey # _____
- recorded by Historic American Engineering Record # _____

Primary location of additional data:

- State Historic Preservation Office
- Other State agency
- Federal agency
- Local government
- University
- Other

Name of repository:

U.S. Postal Service

10. Geographical Data

Acreage of Property less than 1 acre

UTM References

(Place additional UTM references on a continuation sheet.)

1	1 5	74 6 40 5	3 5 2 78 5 0
	Zone	Easting	Northing
2			

3			
	Zone	Easting	Northing
4			

See continuation sheet

Verbal Boundary Description

(Describe the boundaries of the property on a continuation sheet.)

Boundary Justification

(Explain why the boundaries were selected on a continuation sheet.)

11. Form Prepared By

name/title Susan M. Enzweiler
 (Private Practice)
 organization Historic Preservation Consultant date 15 August 1992
 street & number 1356 Seminole Ave. telephone (504) 834-9024
 city or town Metairie state LA zip code 70005

Additional Documentation

Submit the following items with the completed form:

Continuation Sheets

Maps

A **USGS map** (7.5 or 15 minute series) indicating the property's location.

A **Sketch map** for historic districts and properties having large acreage or numerous resources.

Photographs

Representative **black and white photographs** of the property.

Additional items

(Check with the SHPO or FPO for any additional items)

Property Owner

(Complete this item at the request of SHPO or FPO.)

name U.S. Postal Service, Real Estate Division (Contact: Ila Lee Odom)
 street & number 1407 Union Street telephone (901) 722-7421
 city or town Memphis state TN zip code 38166-0330

Paperwork Reduction Act Statement: This information is being collected for applications to the National Register of Historic Places to nominate properties for listing or determine eligibility for listing, to list properties, and to amend existing listings. Response to this request is required to obtain a benefit in accordance with the National Historic Preservation Act, as amended (16 U.S.C. 470 et seq.).

Estimated Burden Statement: Public reporting burden for this form is estimated to average 18.1 hours per response including time for reviewing instructions, gathering and maintaining data, and completing and reviewing the form. Direct comments regarding this burden estimate or any aspect of this form to the Chief, Administrative Services Division, National Park Service, P.O. Box 37127, Washington, DC 20013-7127; and the Office of Management and Budget, Paperwork Reductions Projects (1024-0018), Washington, DC 20503.

**United States Department of the Interior
National Park Service****National Register of Historic Places
Continuation Sheet**Section number 7 Page 1U.S. Post Office--Hazlehurst
Mississippi Post Offices
Thematic Resources Nomination
1931-1941**#7 Narrative Description**

The United States Post Office in Hazlehurst is located in the central business district approximately three blocks north of the courthouse. It is Colonial Revival in style. A brick basement level rises above grade to a double-course limestone water table. The elevated main floor is accessed by a flight of limestone steps with cast iron railings which terminate at the sidewalk in a pair of lantern standards. The exterior walls consist of one full story crowned by a wooden frieze which is continuous around the building. A denticulated cornice spans the front facade and partially continues down the side elevations. A hipped roof covered in tiles is located over the lobby area with a flat, built-up roof to the rear over the work area. Basement windows are exposed on the main facade by means of an areaway with a railing in front of the areaway for protection. A square, wooden, two stage cupola is centered over the central bay on the roof ridge. It is articulated by a quoined base and wooden, double hung, six over six windows flanked by fluted pilasters. Additionally, it has a peaked metal roof and weather vane. The street facade consists of five bays reading window-window-door-window-window. The central doorway is articulated by a flanking pair of wooden, fluted Doric pilasters; block paneled transom; architrave with dentils; and above that a semicircular, recessed, stucco panel with a brick voissior surround in which is centered a cast metal eagle approximately eighteen inches high. Windows in this facade are wooden, double hung, twelve over twelve sash with limestone lintels and sills. The north and south facades each consist of five bays of windows with the same treatment, although one window has a vent replacing the lights in its upper sash. A mailing vestibule and platform project from the rear (east) facade. Brick masonry laid in an English bond is used throughout. A full basement level exists.

The interior plan (see attached plan drawings) consists of an L-shaped lobby with the postmaster's office on the northwest corner. The remaining area is given over to a large work area and the aforementioned mailing vestibule and platform. A partial mezzanine level containing a lookout is located over the vault area. The lobby contains a polychrome terrazzo floor, marble wainscoting, the original wooden vestibule and an altered screenline.

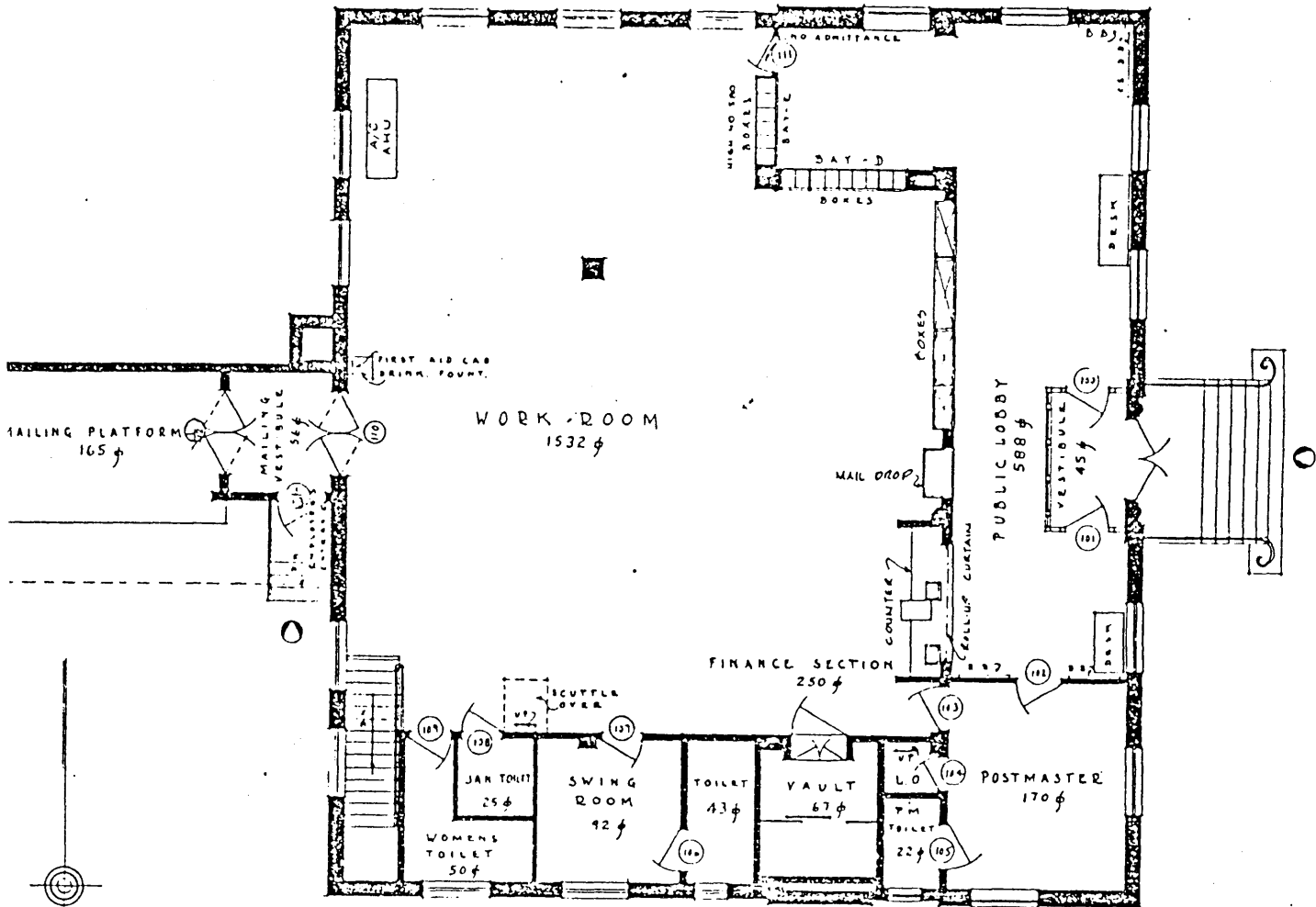
A mural by Auriel Bessemer, created under the Treasury Department's Section of Fine Arts program, was completed and installed in 1939 at a cost of \$700.00. It is presently in a fair state of preservation. Her Hazlehurst mural, entitled "Life in the Mississippi Cotton Belt", depicts various scenes in a realistic stylé. The scenes include workers picking cotton, a factory building a river boat, a fisherman and grazing cattle. For more information on the mural, see the Statement of Significance ("Composite Biographical Sketches of Artists").

United States Department of the Interior
National Park Service

National Register of Historic Places
Continuation Sheet

U.S. Post Office--Hazlehurst
Mississippi Post Offices
Thematic Resources Nomination
1931-1941

Section number 7 Page 2



FIRST FLOOR PLAN
SCALE 1/8" = 1'-0"

HAZLEHURST-MISS.

H. KRISTEN
7-11-38
JASCOMB 4-25-57
PAYNE 8-10-59
EDWARDS 8-31-59
THOMAS 7-16-72

United States Department of the Interior
National Park Service

National Register of Historic Places
Continuation Sheet

U.S. Post Office--Hazlehurst
Mississippi Post Offices
Thematic Resources Nomination
1931-1941

Section number 8 Page 1

#8 Statement of Significance

ARCHITECTURE

The Hazlehurst Post Office, built in 1938, is a locally important work of mid-twentieth century Colonial Revival architecture, and is a well-executed and well-maintained example of the colonial style post offices built in Mississippi by the Federal government during the Great Depression. It is the only known governmental building in Hazlehurst that is designed in the Colonial Revival style. The post office and Copiah County's 1918 Neoclassical style courthouse are prominent architectural landmarks in Hazlehurst's central business district, an area generally marked by buildings which lack architectural distinction. As a significant landmark, the post office represents not only the Federal presence in Hazlehurst but also the town's participation in the Union.

The U. S. Post Office in Hazlehurst is an excellent example of the Colonial Revival architecture constructed under various New Deal programs in Mississippi communities during the 1930s and early 1940s and retains a high degree of architectural integrity.

ART

The oil-paint-on-canvas mural entitled "Life in the Mississippi Cotton Belt" was painted by Auriel Bessemer, an artist originally from Grand Rapids, Michigan. Her work was also hung in the post offices of Arlington, Virginia and Winnsboro, South Carolina. It is not known if any of her murals hang in other Mississippi post offices ("Composite Biographical Sketches of Artists").

Auriel Bessemer studied at Columbia University, the Master Institute of Roerich Museum and the National Academy of Design. She served as director, registrar and curator at the Gallery of Modern Masters in Washington and also painted murals for the American Museum of Natural History in New York ("Composite Biographical Sketches of Artists").

Bessemer's Hazlehurst mural is representative of the type of art work generated by the Treasury Department's Section of the Fine Arts in the 1930s and early 1940s. It depicts in a realistic style "the American scene" as it would have been understood in Hazlehurst, a rural Mississippi community with a diversified economy. "Life in the Mississippi Cotton Belt" symbolizes the New Deal's attempt to educate and inspire Americans who lived in small towns such as Hazlehurst.

The mural was completed and installed in 1939.

United States Department of the Interior
National Park Service

National Register of Historic Places Continuation Sheet

U.S. Post Office--Hazlehurst
Mississippi Post Offices
Thematic Resources Nomination
1931-1941

Section number 8 Page 2

POLITICS/GOVERNMENT

The Hazlehurst Post Office and mural illustrate how the Federal government through Franklin Delano Roosevelt's leadership transformed its role from one of "neutral arbiter to social welfare activist", a role the government has retained down to today. Hazlehurst, along with the rest of rural Mississippi, suffered greatly during the Great Depression. The construction of Hazlehurst's post office and the painting of its mural demonstrate how the Federal government sought to alleviate the economic hardships of an American community through work relief while also attempting to hearten and encourage that community through public beautification (Craig 1979: 343).

United States Department of the Interior
National Park Service

National Register of Historic Places Continuation Sheet

U.S. Post Office--Hazlehurst
Mississippi Post Offices
Thematic Resources Nomination
1931-1941

Section number 9 Page 1

#9 Bibliography

"Composite Biographical Sketches of Artists." This report was submitted with the original National Register nomination.

Craig, Lois and the staff of the Federal Architecture Project. The Federal Presence: Architecture, Politics, and Symbols in United States Government Building. Cambridge: The MIT Press, 1979.

United States Department of the Interior
National Park Service

National Register of Historic Places Continuation Sheet

U.S. Post Office--Hazlehurst
Mississippi Post Offices
Thematic Resources Nomination
1931-1941

Section number 10 Page 1

#10 Geographical Data

VERBAL BOUNDARY DESCRIPTION

A tract of land lying and being in the City of Hazlehurst, County of Covich, State of Mississippi, and described as follows:

Beginning at a point being the intersection of the southerly side of Green Street with the easterly side of Croker Street; running thence in an eastwardly direction along the southerly side of Green Street, a distance of 100 feet to a point; thence in a southwardly direction, a distance of 120 feet to a point; thence in a westwardly direction, a distance of 100 feet to a point in the easterly side of Croker Street; thence in a northwardly direction along the easterly side of Croker Street, a distance of 120 feet to the point or place of beginning, as shown by plat "Land proposed to be acquired through condemnation proceedings as a Post Office site at Hazlehurst, Mississippi. . . ."

BOUNDARY JUSTIFICATION

The boundaries of the nominated property are the historical boundaries of the U.S. Post Office in Hazlehurst.