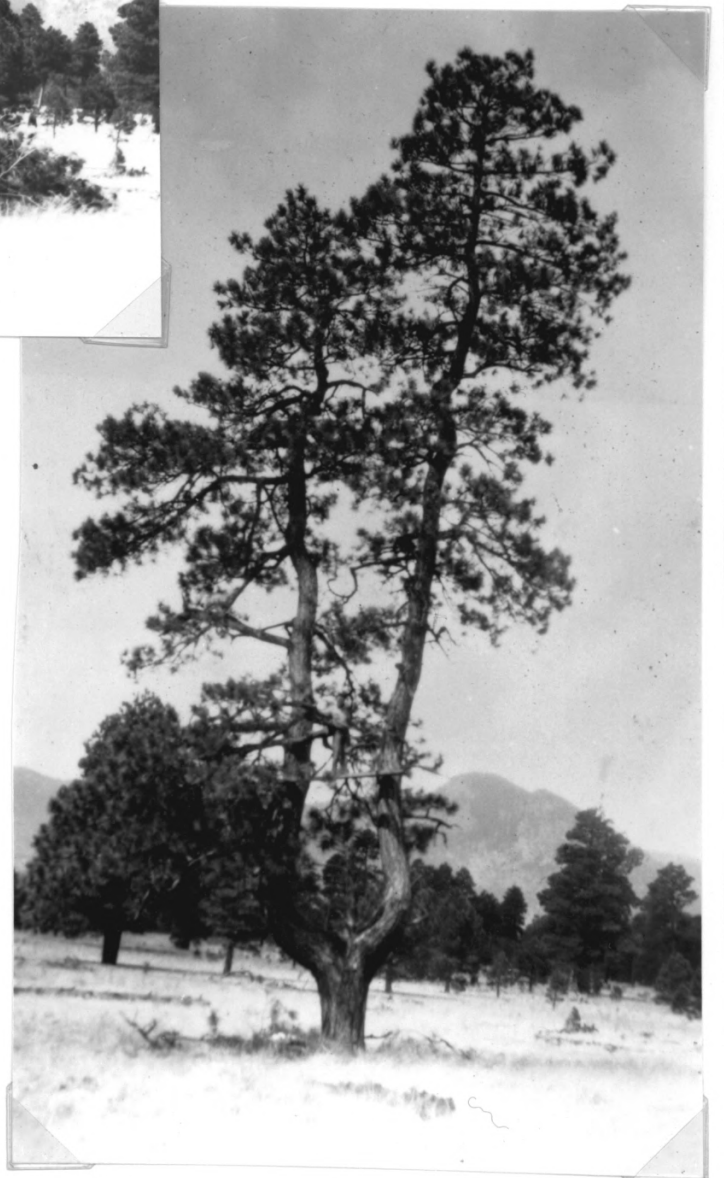


An unidentified lumberjack prunes the forked trunk of a native ponderosa pine which was used as the distinctive entry way for the Dean Eldredge Museum, known today as The Museum Club.

LOCATION The Museum Club
3404 E. Route 66, Flagstaff, AZ 86004
DATE circa 1931
PHOTOGRAPHER Unknown
NEGATIVE AT NAU Special Collections Library
DIRECTION Facing northwest
PHOTO NUMBER Historic #1 & #2



Ponderosa pine logs were used to construct the exterior walls,
built around five upright ponderosa pine trees, limbs and all (note
branches sticking through the rafters).

LOCATION The Museum Club
3404 E. Route 66, Flagstaff, AZ 86004
DATE circa 1931
PHOTOGRAPHER Unknown
NEGATIVE AT NAU Special Collections Library
DIRECTION Facing northwest
PHOTO NUMBER Historic #3



Ponderosa pine logs were used to construct the exterior walls and a full-width one-story Tidewater porch. Situated in the largest stand of ponderosa pine found in the United States, this material was readily available and lent itself to the naturalistic setting desired by the builder, Dean Eldredge.

LOCATION The Museum Club
3404 E. Route 66, Flagstaff, AZ 86004
DATE circa 1931
PHOTOGRAPHER Unknown
NEGATIVE AT NAU Special Collections Library
DIRECTION Facing west
PHOTO NUMBER Historic #4



Dean Eldredge's boyhood dream became a reality in 1931 when he built The Museum to house his unique collection of taxidermied animals, valuable rifles and Indian artifacts. The attraction drew the interest of Route 66 travelers who paid an admission price of 25 cents.

LOCATION The Museum Club
3404 E. Route 66, Flagstaff, AZ 86004
DATE circa 1931
PHOTOGRAPHER Unknown
NEGATIVE AT NAU Special Collections Library
DIRECTION Facing northeast
PHOTO NUMBER Historic #5



According to early newspaper reports, The Dean Eldredge Museum housed more than 30,000 specimens including everything from Hawaiian trigger fish to freak calves and ducks, from arrowheads to rare rifles. More than 80 animal mounts were also on display.

LOCATION The Museum Club
3404 E. Route 66, Flagstaff, AZ 86004
DATE 1931
PHOTOGRAPHER Unknown
NEGATIVE AT The Museum Club
DIRECTION Interior; facing north wall
PHOTO NUMBER Historic #6



This 1914 Ford belonged to Dean Eldredge who constructed The Dean Eldredge Museum in 1931 east of Flagstaff along Route 66.

LOCATION The Museum Club
3404 E. Route 66, Flagstaff, AZ 86004
DATE circa 1931
PHOTOGRAPHER Unknown
NEGATIVE AT The Museum Club
DIRECTION Facing north
PHOTO NUMBER Historic #7



The Museum Club prior to stabilization and re-siding circa 1989.

LOCATION The Museum Club
3404 E. Route 66, Flagstaff, AZ 86004
DATE circa 1989
PHOTOGRAPHER Unknown
NEGATIVE AT The Museum Club
DIRECTION Facing northwest
PHOTO NUMBER Historic #8



The fireplace features a plethora of mineral specimens and artifacts found in Northern Arizona including; colorful pieces of petrified wood, geodes, two Indian metates, rough malpais rock, cylindrical red volcanic "bombs and smooth river rocks with colored strata.

LOCATION The Museum Club
3404 E. Route 66, Flagstaff, AZ 86004
DATE July 3, 1993
PHOTOGRAPHER Steve Chambers
NEGATIVE AT The Museum Club
DIRECTION Interior; eastward
PHOTO NUMBER 1



The Museum Club is an expressive example of a large massed Midland Tradition log house with a Tidewater front porch (now enclosed). Constructed extensively from local natural materials, it incorporates unusual natural features including the inverted forked trunk of a ponderosa pine as an entry way.

LOCATION The Museum Club
3404 E. Route 66, Flagstaff, AZ 86004

DATE July 3, 1993

PHOTOGRAPHER Steve Chambers

NEGATIVE AT The Museum Club

DIRECTION Facing northwest

PHOTO NUMBER 2



Martin Zanzucchi, owner of The Museum Club since 1978, has invested heavily in the restoration of this historic structure on Route 66. A Flagstaff native, he helped lead the renaming effort to bring Route 66 back as the name of the city's main thoroughfare.

LOCATION The Museum Club
3404 E. Route 66, Flagstaff, AZ 86004
DATE July 3, 1993
PHOTOGRAPHER Steve Chambers
NEGATIVE AT The Museum Club
DIRECTION Facing north
PHOTO NUMBER 3



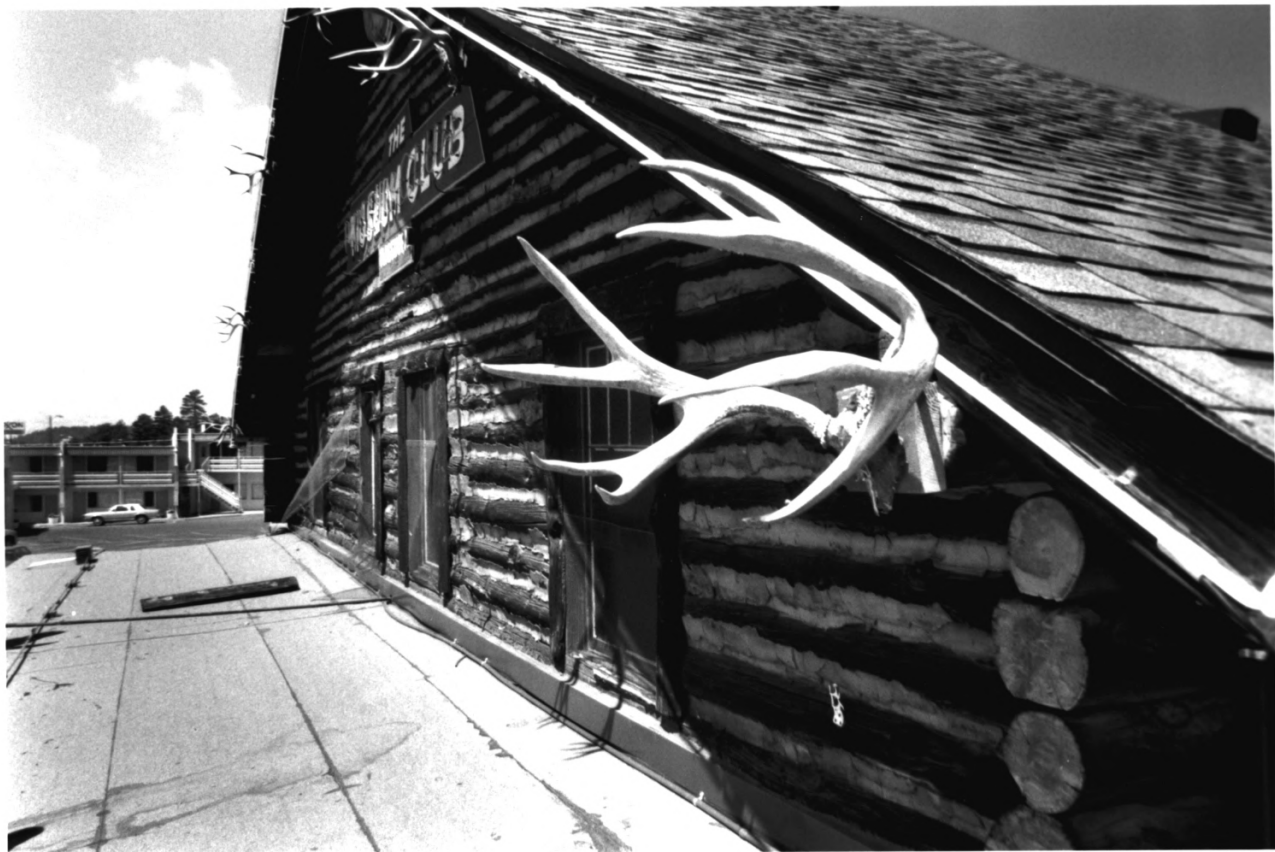
The Museum Club was once promoted as Arizona's largest log cabin. Today it remains a highlight along Arizona's Route 66.

LOCATION The Museum Club
3404 E. Route 66, Flagstaff, AZ 86004
DATE July 3, 1993
PHOTOGRAPHER Steve Chambers
NEGATIVE AT The Museum Club
DIRECTION Facing northeast
PHOTO NUMBER 4



The Museum Club's existing windows are original, consisting of 4-over-1 casements on the second story (pictured here) and 3-over-1 casement units on each side facade. Antlers are used as exterior decoration just as they were in 1931.

LOCATION The Museum Club
3404 E. Route 66, Flagstaff, AZ 86004
DATE July 3, 1993
PHOTOGRAPHER Steve Chambers
NEGATIVE AT The Museum Club
DIRECTION Facing west
PHOTO NUMBER 5



Log construction is visible throughout the interior. Corners frequently show the saddle notches used to stack the logs.

LOCATION The Museum Club
3404 E. Route 66, Flagstaff, AZ 86004
DATE July 3, 1993
PHOTOGRAPHER Steve Chambers
NEGATIVE AT The Museum Club
DIRECTION
PHOTO NUMBER 6



The dance floor is studded with five mature ponderosa pines that provide interior decoration and support.

LOCATION The Museum Club
3404 E. Route 66, Flagstaff, AZ 86004
DATE July 3, 1993
PHOTOGRAPHER Steve Chambers
NEGATIVE AT The Museum Club
DIRECTION Interior; facing east
PHOTO NUMBER 7



The interior of The Museum Club retains a high degree of integrity, with nearly all historic elements still in place. Taxidermied animal mounts still decorate the interior as they did in the days of The Dean Eldredge Museum

LOCATION The Museum Club
3404 E. Route 66, Flagstaff, AZ 86004
DATE July 3, 1993
PHOTOGRAPHER Steve Chambers
NEGATIVE AT The Museum Club
DIRECTION
PHOTO NUMBER 8



Antlers and animal mounts loom in the rafters of The Museum Club. A large historic (but not original to the building) wood bar was milled in Alabama in the 1890s (pictured in background).

LOCATION The Museum Club
3404 E. Route 66, Flagstaff, AZ 86004
DATE July 3, 1993
PHOTOGRAPHER Steve Chambers
NEGATIVE AT The Museum Club
DIRECTION Interior; northwest corner.
PHOTO NUMBER 9

