

1407

United States Department of the Interior  
National Park Service

NATIONAL REGISTER OF HISTORIC PLACES  
REGISTRATION FORM

=====

1. Name of Property

=====

historic name Hotel Love

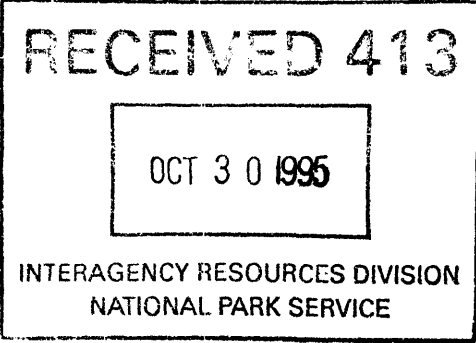
other names/site number N/A

=====

2. Location

=====

street & number 200 West Main not for publication N/A  
city or town Purcell vicinity N/A  
state Oklahoma code OK county McClain code 087  
zip code 73080







=====

6. Function or Use

=====

Historic Functions (Enter categories from instructions)

Cat: <u>DOMESTIC</u>	Sub: <u>hotel</u>
_____	_____
_____	_____
_____	_____
_____	_____
_____	_____
_____	_____

Current Functions (Enter categories from instructions)

Cat: <u>COMMERCE/TRADE</u>	Sub: <u>Specialty Store</u>
<u>COMMERCE/TRADE</u>	<u>Organizational</u>
<u>COMMERCE/TRADE</u>	<u>Restaurant</u>
_____	_____
_____	_____
_____	_____
_____	_____

=====

7. Description

=====

Architectural Classification (Enter categories from instructions)

LATE VICTORIAN: Italianate

\_\_\_\_\_

\_\_\_\_\_

Materials (Enter categories from instructions)

foundation	<u>STONE: Sandstone</u>
roof	<u>METAL: Steel</u>
walls	<u>BRICK</u>
other	<u>WOOD</u>
_____	_____

Narrative Description (Describe the historic and current condition of the property on one or more continuation sheets).

=====  
8. Statement of Significance  
=====

Applicable National Register Criteria (Mark "x" in one or more boxes for the criteria qualifying the property for National Register listing)

- A Property is associated with events that have made a significant contribution to the broad patterns of our history.
- B Property is associated with the lives of persons significant in our past.
- C Property embodies the distinctive characteristics of a type, period, or method of construction or represents the work of a master, or possesses high artistic values, or represents a significant and distinguishable entity whose components lack individual distinction.
- D Property has yielded, or is likely to yield information important in prehistory or history.

Criteria Considerations (Mark "X" in all the boxes that apply.)

- A owned by a religious institution or used for religious purposes.
- B removed from its original location.
- C a birthplace or a grave.
- D a cemetery.
- E a reconstructed building, object, or structure.
- F a commemorative property.
- G less than 50 years of age or achieved significance within the past 50 years.

Areas of Significance (Enter categories from instructions)

COMMERCE  
\_\_\_\_\_  
\_\_\_\_\_  
\_\_\_\_\_  
\_\_\_\_\_  
\_\_\_\_\_  
\_\_\_\_\_

Period of Significance 1896-ca. 1925  
\_\_\_\_\_  
\_\_\_\_\_

Significant Dates March 1896  
1909  
\_\_\_\_\_

=====  
8. Statement of Significance (Continued)  
=====

Significant Person (Complete if Criterion B is marked above)

N/A

Cultural Affiliation N/A

Architect/Builder Unknown

Narrative Statement of Significance (Explain the significance of the property on one or more continuation sheets.)

=====  
9. Major Bibliographical References  
=====

(Cite the books, articles, and other sources used in preparing this form on one or more continuation sheets.)

Previous documentation on file (NPS)

       preliminary determination of individual listing (36 CFR 67) has been requested.

       previously listed in the National Register

       previously determined eligible by the National Register

       designated a National Historic Landmark

       recorded by Historic American Buildings Survey #           

       recorded by Historic American Engineering Record #           

Primary Location of Additional Data

  X   State Historic Preservation Office

       Other State agency

       Federal agency

  X   Local government

       University

  X   Other

Name of repository: Purcell Public Library; McClain County Museum

=====  
10. Geographical Data  
=====

Acreage of Property less than one (1) acre

UTM References (Place additional UTM references on a continuation sheet)

	Zone	Easting	Northing	Zone	Easting	Northing
1	<u>14</u>	<u>649520</u>	<u>3875420</u>	3	<u>    </u>	<u>    </u>
2	<u>    </u>	<u>    </u>	<u>    </u>	4	<u>    </u>	<u>    </u>

N/A See continuation sheet.

Verbal Boundary Description (Describe the boundaries of the property on a continuation sheet).

Boundary Justification (Explain why the boundaries were selected on a continuation sheet.)

=====  
11. Form Prepared By  
=====

name/title Jerry and Elaine Butler, owners; ed. by Susan Allen OK/SHPO  
organization \_\_\_\_\_ date June 30, 1995  
street & number 200 West Main telephone 405/527-9592  
city or town Purcell state OK zip code 73080-4222

=====  
Additional Documentation  
=====

Submit the following items with the completed form:

Continuation Sheets

Maps

A USGS map (7.5 or 15 minute series) indicating the property's location.  
A sketch map for historic districts and properties having large acreage or numerous resources.

Photographs

Representative black and white photographs of the property.

Additional items (Check with the SHPO or FPO for any additional items)

=====  
Property Owner  
=====

(Complete this item at the request of the SHPO or FPO.)

name Jerry D. Butler and Elaine Butler  
street & number 200 West Main telephone 405/527-9592  
city or town Purcell state OK zip code 73080  
=====



United States Department of the Interior  
National Park Service

NATIONAL REGISTER OF HISTORIC PLACES  
CONTINUATION SHEET

Section 7 Page 9

OMB No. 1024-0018

RECEIVED 413

OCT 30 1995

INTERAGENCY RESOURCES DIVISION  
 HOTEL LOVE  
 NATIONAL PARK SERVICE  
 name of property  
 McClain County, Oklahoma  
 county and State



DESCRIPTION

ROOF: Asphalt

SUMMARY

The Hotel Love in Purcell, Oklahoma is a three-story, red brick building constructed in 1896 with a 1909 addition. The 1909 addition is attached to the west side of the original building and gives the facade an El-shape. The long leg of the El (the original portion of the building) is setback twenty-six (26) feet from the street. The short leg of the El (the 1909 addition) projects 10 feet beyond this setback and is even with other buildings in the block. Across the original portion of the building is a shed roofed, second story wood balcony. The balcony is supported by spindled wood columns and features a spindled frieze and balcony railing. The machicolated and corbelled brick along the parapet and the segmental arched windows lend an Italianate influence to the building. Located at the southwest corner of Main and Second, the building occupies a prominent spot in the downtown business district and is surrounded by one- and two-story brick commercial buildings that date from the late 19th and early 20th century. That portion of Second Street immediately east of the building has been vacated to form Santa Fe Plaza, a downtown park containing a Santa Fe Railway caboose. Although the building has been altered, it continues to retain much of its historic integrity.

DESCRIPTION

The Hotel Love in Purcell, Oklahoma is a three-story, red brick building constructed in 1896 with a 1909 addition. The 1909 addition is attached to the west side of the original building and gives the facade an El-shape. The long leg of the El (the original portion of the building) is setback twenty-six (26) feet from the street. The short leg of the El (the 1909 addition) projects 10 feet beyond this setback and is even with other buildings in the block. Across the original portion of the building is a shed roofed, second story wood balcony. The balcony is supported by spindled wood columns and features a spindled frieze and balcony railing. The machicolated and corbelled brick along the parapet and the segmental arched windows lend an Italianate influence to the building.

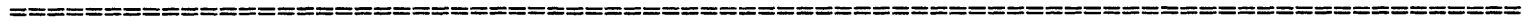
The original building faces north and is rectangular in form, measuring one hundred and twenty-five (125) feet (north to south) and forty-eight (48) feet (east to west). There are two entrances on the (front) north side of the building and three large fixed windows with segmental arched fixed transoms above. The second story displays five bays with segmental arched window

United States Department of the Interior  
National Park Service

NATIONAL REGISTER OF HISTORIC PLACES  
CONTINUATION SHEET

Section 7 Page 10

Hotel Love  
name of property  
McClain County, Oklahoma  
county and State



openings containing nonoriginal aluminum hung windows on stone sills. A wooden balcony extends across the front of the second story. The third story also displays five bays with segmental arched window openings containing nonoriginal aluminum hung windows on stone sills. Each third story bay appears in a setback framed by decorative pilaster strips extending above the stone cornice line. Each of the two corners is designed to resemble a simple tower, more elaborately machicolated and slightly taller. The coping and pilaster caps are of stone.

The east elevation is twelve bays deep, with a consistent use of segmental arches above windows and doors. There are two entrances on this side. Pilasters divide the bays on all three levels. The tower design is repeated midway down the east side and at the southeast corner. All but one of the windows on the third floor are boarded over. Some of the wood hung windows on the second floor have been replaced with aluminum hung windows. The windows on the first floor include wood hung and fixed windows.

The north and east side of the building, except the top portion of the third floor on the east side, is painted brick color (to cover green paint applied many years ago).

There are seven segmental arched windows on stone sills on the west side of both the second and third floor of the original building. Four windows are aluminum, one is wooden and nine are boarded over. The brick on the west side of the original building has never been painted.

The rear of the original hotel has two windows and a door on the first floor. The door and one of the windows have been closed off from the inside. The second floor has two segmental arched windows with stone sills and a fire escape. In 1986 the wooden door to the fire escape was replaced with an aluminum storm door. One wooden window has been replaced and one window is boarded over. The third floor has two segmental arched windows with stone sills and a fire escape. The fire escape has a wooden door and both windows are boarded over. New guttering was completed on the rear of the building in November 1994 and some repair work has been done to the mortar and brick. This side of the building is partially covered with green and white paint.

The 1909 addition is rectangular in form, measuring fifty (50) feet (north and south) and twenty-seven (27) feet (east to west). There are two entrances on the front of the addition. The front four rectangular windows have stone sills and simple polychromatic corbelled brickwork appears below the coping. The stone cornice line is broken by elevated caps at each corner. There are five rectangular windows with stone sills on the west side of both the second and

United States Department of the Interior  
National Park Service

NATIONAL REGISTER OF HISTORIC PLACES  
CONTINUATION SHEET

Section 7 Page 11

Hotel Love  
name of property  
McClain County, Oklahoma  
county and State

third floor of the addition. Seven are boarded over.

There are five rectangular windows with stone sills on the south side of the second floor addition. Two windows are aluminum and three windows are boarded over. There are four rectangular windows with stone sills, one small square window with stone sill, and a fire escape door on the south side of the third floor of the addition. Two windows are wooden, three are boarded over and the fire escape door is boarded over. This addition is painted a red brick color on the east, north and west sides. The south side of the addition has never been painted.

ALTERATIONS

The hotel is in its original location at the corner of 200 West Main and although altered in previous years, it was rehabilitated in 1993.

The building was altered over the years from circa 1925 through the 1940s. In circa 1925, the second story balcony was removed. In the 1940s, the first floor facade of the 1909 addition was altered by removing the center double doors and boarding over the clerestory. At that time a wall was built dividing the first floor in half lengthwise. Half of the first floor facade now has a wood and glass storefront door with transom and a plate glass window with black ceramic tile below. The other half has a center glass door with plate glass windows on each side.

In September 1945, the building was sold by the Love family to James C. Nance. At that time the lobby of the hotel was moved into the smaller west section of the original building which was once the billiard room of the hotel. A one-story ten (10) foot brick extension was added to the front of the original building to bring it out even with the 1909 addition and large plate glass windows and a glass door with glass side lights added to the front. Ceilings in several rooms on both the second and third floors were lowered and bathrooms added at an unknown date. When ceilings were lowered in a room, the wooden windows in those rooms were removed and replaced with aluminum windows. Other windows on the second and third floors are wood. A drop ceiling was put in the original lobby area, five windows on the east side were bricked in, the wall separating the original lobby from the dining room was removed and the grand stairway was torn down. The original lobby and hotel dining area became a drug store. The hotel was operated under the name of McClain Hotel from 1945 until it closed in 1975. When the hotel was closed, the second and third floors were closed off and the west lobby area rented to various businesses. The drug store closed its doors December 31, 1992. At some point during this time, most of the exterior walls were painted green.

United States Department of the Interior  
National Park Service

NATIONAL REGISTER OF HISTORIC PLACES  
CONTINUATION SHEET

Section 7 Page 12

Hotel Love  
name of property  
McClain County, Oklahoma  
county and State

Beginning January 4, 1993, the 1945 brick extension was removed from the original building. Historic photographs were used to reconstruct the front elevation. On the first floor, a brick front with two entrances and three windows was constructed. New brick was used to construct the wall around the entrances and windows. The entrance to the lobby has a segmental arched doorway with a wood and glass storefront door, a glass panel above, and sidelights with wood panels below. The door to the entrance of the former "billiard room" of the hotel is the same but has no sidelights. The segmental arched windows contain fixed plate glass with glass lights above. Wood trim around all windows and doors is painted white.

Bricks were removed from three large first floor windows on the east side of the lobby and plate glass windows with glass panels above were set within new arched wooden frames. Bricks were also removed from a door on the east side of the original lobby and a wood and glass storefront door was set within a new arched wooden frame with glass panel above. Four entrances located on the southern half of the first floor of the east elevation have also been altered (these alterations occurred prior to the 1993 renovation). Two of the entrances originally opened to sample rooms and were converted to windows. A large entrance that formerly opened to a freight elevator has been partially infilled with wood paneling and fixed windows. A fourth entrance at the middle of the building has been boarded up and an air conditioner installed in the transom area.

The drop ceiling of the lobby area was recently torn out revealing the original pressed tin ceiling, which was repaired and painted. The wall separating the original lobby from the hotel dining area was rebuilt and an oak stairway leading to the second floor was constructed by patterning it after the stairway that leads from the second to the third floor. A portion of the original oak flooring was uncovered and refinished. The renovation of the lobby was completed in 1993 and was opened July 3, 1993. The original lobby area, billiard room, thirteen former sleeping rooms and six former bathrooms on the second floor of the hotel building are now occupied by an antique store. The remaining rooms on the second and third floors are empty. The rear of the first floor contains the offices for the Purcell Main Street Program. An espresso bar and cafe is located in the first floor of the 1909 addition. Future plans include restoring second floor rooms in the 1909 addition as a bed and breakfast. This project is scheduled to open in March of 1996 when the hotel will celebrate its centennial.

Although the Hotel Love has undergone alterations and rehabilitation since the period of significance, it retains integrity of location, design, feeling, workmanship, and association.

United States Department of the Interior  
National Park Service

NATIONAL REGISTER OF HISTORIC PLACES  
CONTINUATION SHEET

Section 8 Page 13

Hotel Love  
name of property  
McClain County, Oklahoma  
county and State

SUMMARY

The Hotel Love is eligible for the National Register of Historic Places under Criterion A for its association with the early commercial history of Purcell, Oklahoma. Constructed in 1896 and enlarged in 1909, the Hotel Love served the traveling public and the community for many years and is the only turn-of-the century hotel building still extant in Purcell. The period of significance is from 1896 to ca. 1925 when the second story balcony was removed.

HISTORICAL SIGNIFICANCE

The town of Purcell is located in south central Oklahoma in what was formerly the Chickasaw Nation, Indian Territory. "On the 5th day of April 1887, the present site of Purcell was blocked from the broad expanse of prairie which was then but a wild and unsettled reservation, roamed by its thousands of cattle and horses, with here and there a herder. At that time business enterprises were almost unknown institutions to this most valuable and fast becoming civilized and agricultural section. It was at this time that the first business establishment was placed on the present site of the city of Purcell."<sup>1</sup> Shortly thereafter, the Gulf, Colorado, and Santa Fe Railway met the Atchison, Topeka and Santa Fe Railway and the junction was completed near Purcell on April 26, 1887. The two established a switching yard at Purcell. A frame business district grew along Canadian Street, running north and south, parallel to and on the hill above the railway.

Hotels and boarding houses were very important during the early growth of Purcell. When the railroad was completed through Indian Territory, people began to locate in the community. Prior to that time the only visitors to Purcell "were an occasional ranchman, a stragglng hunting party, or bands of Indians."<sup>2</sup> Anyone arriving by wagon or on the train would of necessity seek accommodation in one of the local hotels or boarding houses. The earliest hotels were frame buildings constructed in 1887. They included the Santa Fe Hotel, Barnes Hotel (built on the southwest corner of Main and Second, the present site of the Hotel Love), and the Green Front Hotel. In 1891, the frame Clifton Hotel was built. In 1893, several large fires occurred in Purcell.

<sup>1</sup>Business Directory of Purcell, Ind. Ter., pub. Purcell Citizen Print, 1 November 1900, comp. J.F. Sharp, Attorney, n.p.

<sup>2</sup>Purcell (Indian Territory) Register, November 23, 1887, as quoted in Joyce Rex, ed, McClain County, Oklahoma: History and Heritage, Book 1, (McClain County Historical and Genealogical Society, 1986) 55.

United States Department of the Interior  
National Park Service

NATIONAL REGISTER OF HISTORIC PLACES  
CONTINUATION SHEET

Section 8 Page 14

Hotel Love  
name of property  
McClain County, Oklahoma  
county and State

=====  
Fire partially damaged the Clifton Hotel and later the same year a larger fire completely gutted the Barnes Hotel and the frame buildings west of it. After fire destroyed the Barnes Hotel, the frame Perry House was constructed on the same site in early 1894. Another fire in 1895 almost completely destroyed the prosperous mercantile district, including the Commercial Hotel, the Santa Fe Hotel and the Perry House. Later that year, construction began on the brick three-story Hotel Love. The Helena Hotel opposite the Santa Fe depot opened in 1901. Other hotels listed in the November 1, 1900 Purcell Business Directory include the Hotel Wall Street and the Canadian Hotel. Of all the hotel buildings constructed from 1887 through 1901, only the Hotel Love is in existence today.

When fire destroyed most of the earliest buildings early in 1895, entrepreneurs began construction of the permanent brick buildings that exist today extending west on Main Street from Canadian. Many of the individuals best remembered for their roles in the development of Purcell's central business district intermarried with Chickasaw tribal members, and once they were listed on the tribal government rolls they could own land and participate in the tribal government. One such settler was Robert Jeremiah Love, a young rancher from Missouri, born October 2, 1852. Love, an orphan at age fourteen, hired out to herd horses at \$8 per month, and in subsequent years, lived mostly in cow camps. He saved his wages and in 1876 travelled to the Chickasaw Nation with his life savings, two saddle ponies, and thirty-two head of cattle. There he met Sallie Gaines Criner, a Chickasaw on her mother's side. They were married March 15, 1877. Their home for the first five years was in the Red River area. In 1882 he moved his family to a ranch about twelve miles south of Purcell and in 1896, the family moved to Purcell.<sup>3</sup>

Love became involved in several business ventures in Purcell. Along with J.W. Downer and A.D. Hawk, Love purchased the Bank of Purcell and in 1892 organized the Chickasaw National Bank of which he became president, serving in that capacity until his death January 19, 1899. The Purcell Cotton Seed Oil Mill was established April 22, 1897 with Love elected as President.<sup>4</sup> He was also a stockholder in the grain elevator of Purcell. Among other buildings in

<sup>3</sup>McClain County, Oklahoma--History and Heritage, Book 1, McClain County Historical and Genealogical Society, copr. 1986, pub. Lanham Campbell, p. 153-154.

<sup>4</sup>McClain County, Oklahoma--History and Heritage, Book 2, McClain County Historical and Genealogical Society, copr. 1988, pub. Lanham Campbell, p. 65.

United States Department of the Interior  
National Park Service

NATIONAL REGISTER OF HISTORIC PLACES  
CONTINUATION SHEET

Section 8 Page 15

Hotel Love  
name of property  
McClain County, Oklahoma  
county and State

Purcell, Love built the Hotel Love at a cost of \$20,000.<sup>5</sup>

Construction began on the hotel in 1895 and it opened for business in March of 1896. The Purcell Register, a territorial newspaper, reported that the building was "by far the finest hotel in the Chickasaw nation and has but one equal in the territory--one at Muskogee."<sup>6</sup> The newspaper also called the Hotel Love "The Pride of Purcell. The building is superior to anything of its kind in the Indian Territory."<sup>7</sup> The Business Directory of Purcell, Ind., Ter., published in 1900, stated "The hotels . . . of our city are quite a few in number and are well deserving of the great patronage they receive. Among those that might be given honorable mention are the Love, which is a brick building three stories high and combines all the modern conveniences of an up-to-date hotel, consisting of sixty rooms . . ."<sup>8</sup> These "modern conveniences" included electric lights, steam heat, a dining room, sample rooms for the use of salesmen, and in the early years of the hotel's existence, a barber shop.

Following statehood in 1907 and during the early decades of the twentieth century, Purcell thrived as a stop along the Gulf/Santa Fe railways and was home to the short-lived Oklahoma Central Railway's general offices and shops. With access to these lines, Purcell became a shipping center for corn, cotton, and livestock produced in the locality.<sup>9</sup> As an important commercial and agricultural center, and as the seat of McClain County, Purcell benefitted from those coming to town to conduct business. As a result, lodging establishments such as the Hotel Love benefitted, too.

The hotel continued in operation until 1975 although it operated under the name of the McClain Hotel from 1945 until it closed. The period of significance for the Hotel Love is from 1896 when it opened for business, until ca. 1925 when the second story balcony was removed. The balcony was reconstructed in 1993 so that the building looks much as it did during the period of significance.

<sup>5</sup>McClain Cony, Oklahoma --History and Heritage, Book 1, p. 154.

<sup>6</sup>The Purcell [Oklahoma] Register, 7 February 1896, p. 5.

<sup>7</sup>Ibid., 20 March 1896, p. 5.

<sup>8</sup>Business Directory of Purcell, Ind. Ter.

<sup>9</sup>Hunter James, "Purcell, Seat of McLain[sic] County," Sturm's Oklahoma Magazine 7 (October 1908): 26-27.

United States Department of the Interior  
National Park Service

NATIONAL REGISTER OF HISTORIC PLACES  
CONTINUATION SHEET

Section 9, 10 Page 16

Hotel Love  
name of property  
McClain County, Oklahoma  
county and State

=====

BIBLIOGRAPHY

Business Directory of Purcell, Ind. Ter., comp. J.F. Sharp, Attorney; pub. Purcell Citizen Print, 1 November 1900.

James, Hunter. "Purcell, Seat of McLain [sic] County," Sturm's Oklahoma Magazine, 7 (October, 1908): 26-27.

McClain County, Oklahoma--History and Heritage, Book 2, McClain County Historical and Genealogical Society, copr. 1988, pub. Lanham Campbell.

Purcell [Indian Territory] Register, 7 February 1896; 20 March 1896.

Rex, Joyce, ed., McClain County, Oklahoma--History and Heritage, Book 1, McClain County [Oklahoma] Historical and Genealogical Society, copr. 1986, pub. Lanham Campbell.

Sanborn Fire Insurance Maps, Purcell, Oklahoma, 1896, 1904, 1909, 1914, 1925.

Selland, Thomas and Mark Robinson, Purcell Architecture and Urbanization Study, University of Oklahoma, College of Environmental Design, 1983.

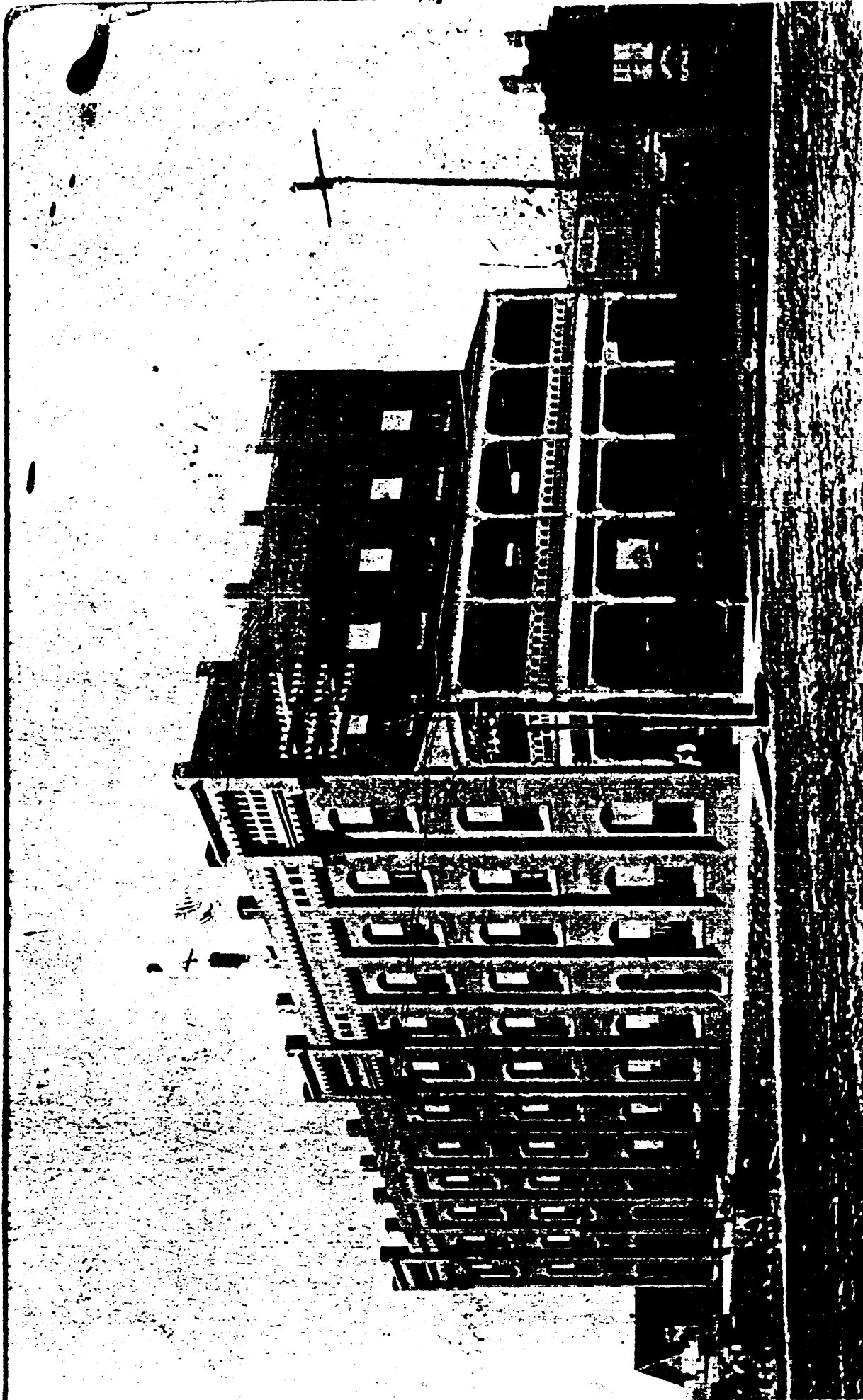
VERBAL BOUNDARY DESCRIPTION

Lots fourteen (14), fifteen (15), and sixteen (16), Block One Hundred Seventeen (117), LESS AND EXCEPT the South 45 feet 6 inches of Lots 14, 15, 16, Block 117, in the City of Purcell, McClain County, Oklahoma.

BOUNDARY JUSTIFICATION

The boundaries described above include the nominated property and excludes a two story apartment building attached to the nominated property and a larger one story building west of the apartment building.





6635 LOVE HOTEL PURCELL OKLA.

Love Hotel, Purcell, Okla.

