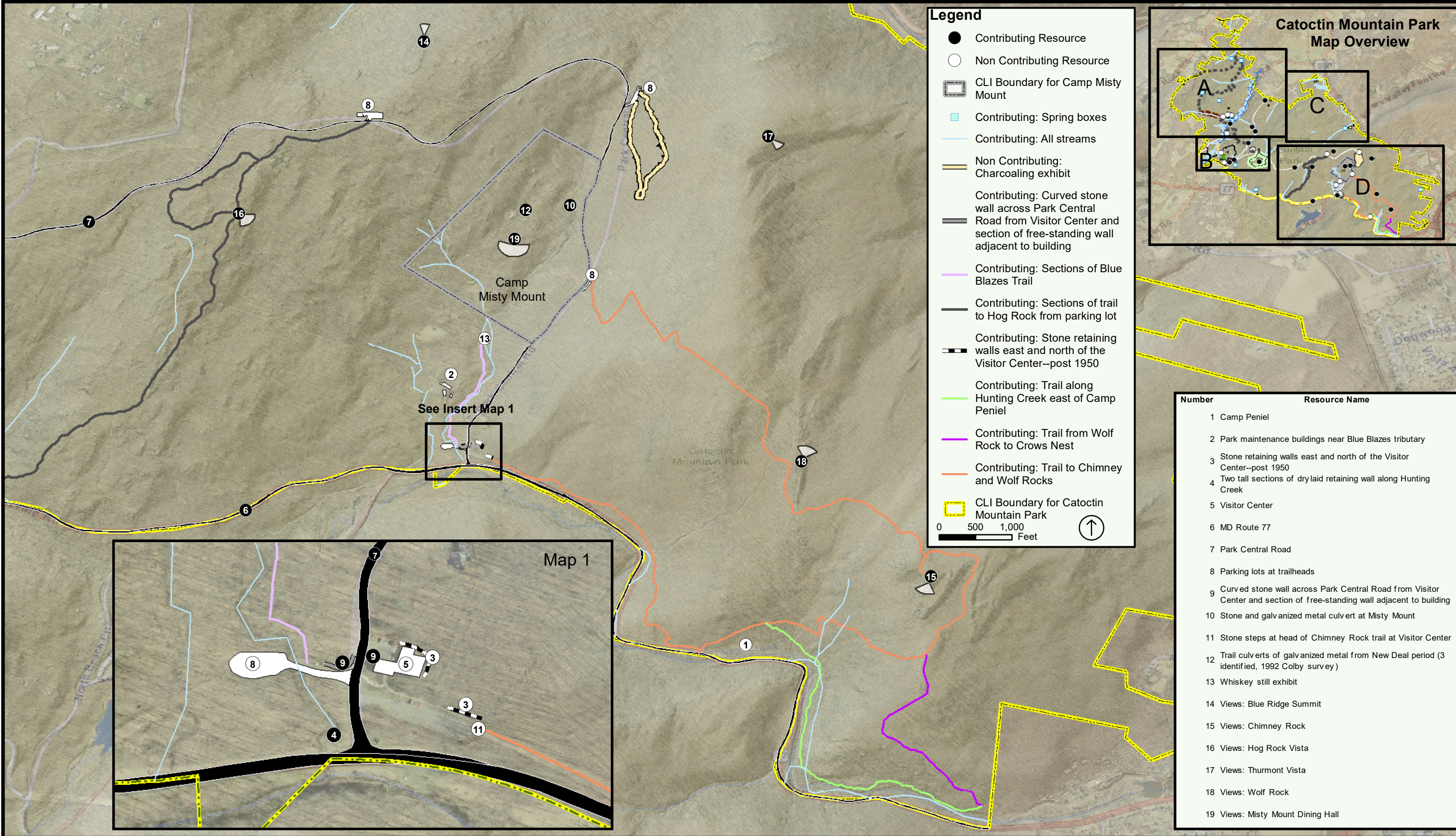


Catoctin Mountain Park

Catoctin Mountain Park CLI - Existing Conditions Site Plan: Map D

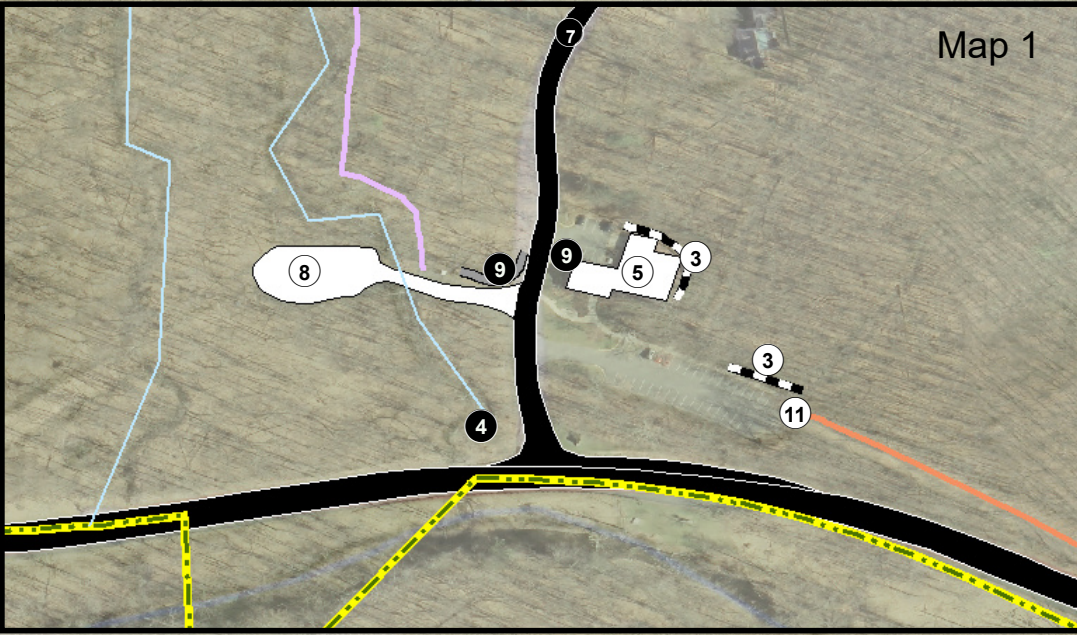
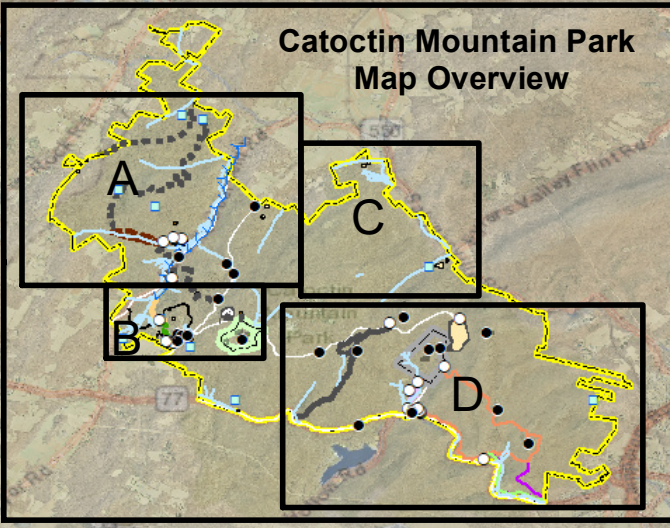
National Capital Region - Cultural Landscapes Program - Cultural Landscape Inventory: 2014



Legend

- Contributing Resource
- Non Contributing Resource
- ▭ CLI Boundary for Camp Misty Mount
- Contributing: Spring boxes
- Contributing: All streams
- Non Contributing: Charcoaling exhibit
- Contributing: Curved stone wall across Park Central
- Road from Visitor Center and section of free-standing wall adjacent to building
- Contributing: Sections of Blue Blazes Trail
- Contributing: Sections of trail to Hog Rock from parking lot
- Contributing: Stone retaining walls east and north of the Visitor Center—post 1950
- Contributing: Trail along Hunting Creek east of Camp Peniel
- Contributing: Trail from Wolf Rock to Crows Nest
- Contributing: Trail to Chimney and Wolf Rocks
- ▭ CLI Boundary for Catoctin Mountain Park

0 500 1,000 Feet



Number	Resource Name
1	Camp Peniel
2	Park maintenance buildings near Blue Blazes tributary
3	Stone retaining walls east and north of the Visitor Center—post 1950
4	Two tall sections of drylaid retaining wall along Hunting Creek
5	Visitor Center
6	MD Route 77
7	Park Central Road
8	Parking lots at trailheads
9	Curved stone wall across Park Central Road from Visitor Center—post 1950 and section of free-standing wall adjacent to building
10	Stone and galvanized metal culvert at Misty Mount
11	Stone steps at head of Chimney Rock trail at Visitor Center
12	Trail culverts of galvanized metal from New Deal period (3 identified, 1992 Colby survey)
13	Whiskey still exhibit
14	Views: Blue Ridge Summit
15	Views: Chimney Rock
16	Views: Hog Rock Vista
17	Views: Thurmont Vista
18	Views: Wolf Rock
19	Views: Misty Mount Dining Hall