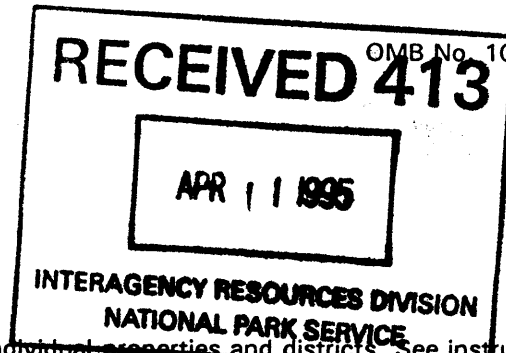


United States Department of the Interior
National Park Service

National Register of Historic Places Registration Form



This form is for use in nominating or requesting determination for individual properties and districts. See instruction in *How to Complete the National Register of Historic Places Registration Form* (National Register Bulletin 16A). Complete each item by marking "x" in the appropriate box or by entering the information requested. If an item does not apply to the property being documented, enter "N/A" for "not applicable." For functions, architectural classification, materials and areas of significance, enter only categories and subcategories from the instructions. Place additional entries and narrative items on continuation sheets (NPS Form 10-900a). Use a typewriter, word processor, or computer, to complete all items.

1. Name of Property

historic name Santa Fe Trail (Marion County Trail Segments)
other names/site number Durham Ruts/NPS Master Plan #84

2. Location

street & number 3-1/2 mi. s. of FAS 426 on FAS 184¹ [n/a] not for publication
city or town Durham [X] vicinity
state Kansas code KS county Marion code 115 zip code 67438

3. State/Federal Agency Certification

As the designated authority under the National Historic Preservation Act, as amended, I hereby certify that this [X] nomination [] request for determination of eligibility meets the documentation standards for registering properties in the National Register of Historic Places and meets the procedural and professional requirements set forth in 36 CFR Part 60. In my opinion, the property [X] meets [] does not meet the National Register criteria. I recommend that this property be considered significant [] nationally [] statewide [X] locally.
(See continuation sheet for additional comments [].)

Ramon Powers SHPO 11.2.94
Signature of certifying official/Title Date
Kansas State Historical Society
State or Federal agency and bureau

In my opinion, the property [] meets [] does not meet the National Register criteria.
(See continuation sheet for additional comments [].)

Signature of certifying official/Title Date

State or Federal agency and bureau

4. National Park Service Certification

I hereby certify that the property is:

- entered in the National Register
See continuation sheet [].
- determined eligible for the National Register
See continuation sheet [].
- determined not eligible for the National Register.
- removed from the National Register
- other, explain
See continuation sheet [].

Entered in the
National Register

Edson B. Beall 5.11.95
Signature of the Keeper Date

Santa Fe Trail
(Marion County...)
Name of Property

Marion County/Kansas
County/State

Historic Resources of the Santa Fe Trail
Multiple Property Submission

5. Classification

Ownership of Property

(Check as many boxes as apply)

- private
- public-local
- public-State
- public-Federal

Category of Property

(Check only one box)

- building(s)
- district
- site
- structure
- object

Number of Resources within Property

(Do not count previously listed resources.)

Contributing	Noncontributing	
0	0	buildings
1	0	sites
0	1	structures
0	0	objects
1	1	Total

Name of related multiple property listing.

(Enter "N/A" if property is not part of a multiple property listing.)

Historic Resources of the Santa Fe Trail

Number of contributing resources previously listed in the National Register.

N/A

6. Function or Use

Historic Function

(Enter categories from instructions)

TRANSPORTATION/road-related

Current Functions

(Enter categories from instructions)

AGRICULTURE/subsistence/agricultural field

7. Description

Architectural Classification

(Enter categories from instructions)

N/A

Materials

(Enter categories from instructions)

foundation N/A
walls N/A

roof N/A
other N/A

Narrative Description

(Describe the historic and current condition of the property on one or more continuation sheets.)

Santa Fe Trail
(Marion County...)
Name of Property

Marion County/Kansas
County/State

Historic Resources of the Santa Fe Trail
Multiple Property Submission

8. Statement of Significance

Applicable National Register Criteria
(Mark "x" in one or more boxes for the criteria qualifying the property for National Register listing.)

A Property is associated with events that have made a significant contribution to the broad patterns of our history

B Property is associated with the lives of persons significant in our past.

C Property embodies the distinctive characteristics of a type, period, or method of construction or represents the work of a master, or possesses high artistic values, or represents a significant and distinguishable entity whose components lack individual distinction.

D Property has yielded, or is likely to yield, information important in prehistory or history.

Criteria Considerations
(Mark "x" in all the boxes that apply.)

Property is:

A owned by a religious institution or used for religious purposes.

B removed from its original location.

C a birthplace or grave.

D a cemetery.

E a reconstructed building, object, or structure.

F a commemorative property.

G less than 50 years of age or achieved significance within the past 50 years.

Narrative Statement of Significance
(Explain the significance of the property on one or more continuation sheets.)

9. Major Bibliographic References

Bibliography
(Cite the books, articles and other sources used in preparing this form on one or more continuation sheets.)

Previous documentation on file (NPS):

preliminary determination of individual listing (36 CFR 67) has been requested

previously listed in the National Register

previously determined eligible by the National Register

designated a National Historic Landmark

recorded by Historic American Buildings Survey

recorded by Historic American Engineering Record

Areas of Significance
(Enter categories from instructions)

Transportation

Commerce

Periods of Significance

1822 - 1870

Significant Dates

N/A

Significant Person(s)

(Complete if Criterion B is marked above).

N/A

Cultural Affiliation

N/A

Architect/Builder

N/A

Primary location of additional data:

State Historic Preservation Office

Other State Agency

Federal Agency

Local Government

University

Other:

Name of repository:
National Park Service Regional Office--
Santa Fe, New Mexico

Santa Fe Trail
(Marion County...)
Name of Property

Marion County/Kansas
County/State

Historic Resources of the Santa Fe Trail
Multiple Property Submission

10. Geographical Data

Acreage of Property 36 acres

UTM References

(Place additional UTM references on a continuation sheet.)

A. Zone 14 Easting 651720 Northing 4259460

B. Zone 14 Easting 651090 Northing 4258440

C. Zone 14 Easting 650380 Northing 4257580

D. Zone 14 Easting 649080 Northing 4256560

See continuation sheet

Verbal Boundary Description

(Describe the boundaries of the property on a continuation sheet.)

Boundary Justification

(Explain why the boundaries were selected on a continuation sheet.)

11. Form Prepared By

name/title See Continuation Sheet, section 11

organization The URBANA Group date May 1993

street & number 202 South Broadway, Suite 206, P.O. Box 1028 telephone (217) 344-7526

city or town Urbana state IL zip code 61801-9028

Additional Documentation

Submit the following items with the completed form:

Continuation Sheets

Maps

A USGS map (7.5 or 15 minute series) indicating the property's location.

A Sketch map for historic districts and properties having large acreage or numerous resources.

Photographs

Representative black and white photographs of the property.

Additional Items

(Check with the SHPO or FPO for any additional items)

Property Owner

(Complete this item at the request of SHPO or FPO.)

name Doug Sharp - Scully Estate Farm Management

street & number 114 South Freeborn telephone _____

city or town Marion state KS zip code 66861

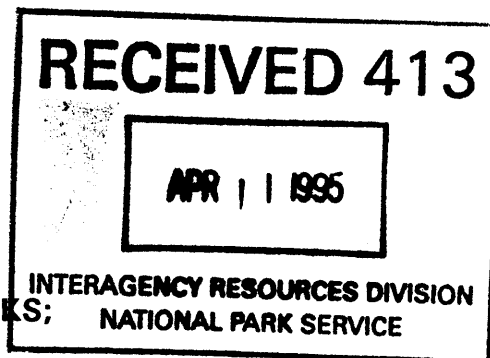
Paperwork Reduction Act Statement: This information is being collected for applications to the National Register of Historic Places to nominate properties for listing or determine eligibility for listing, to list properties, and to amend existing listings. Response to this request is required to obtain a benefit in accordance with the National Historic Preservation Act, as amended (16 U.S.C. 470 et seq.).

Estimated Burden Statement: Public reporting burden for this form is estimated to average 18.1 hours per response including time for reviewing instructions, gathering and maintaining data, and completing and reviewing the form. Direct comments regarding this burden estimate or any aspect of this form to the Chief, Administrative Services Division, National Park Service, P.O. Box 37127, Washington, DC; and the Office of Management and Budget, Paperwork Reductions Projects (1024-0018), Washington, DC 20503.

United States Department of the Interior
National Park Service

National Register of Historic Places
Continuation Sheet

Santa Fe Trail (Marion County Trail Segments); Marion Co., KS;
Historic Resources of the Santa Fe Trail, 1821-1880
Section number 2



Page 1

1. According to the Kansas Department of Transportation's road system designations, "FAS" indicates "Federal-Aid Secondary Highway System."

**United States Department of the Interior
National Park Service**

**National Register of Historic Places
Continuation Sheet**

**Santa Fe Trail (Marion County Trail Segments); Marion Co., KS;
Historic Resources of the Santa Fe Trail, 1821-1880
Section number 2**

Page 2

Narrative Description

The Santa Fe Trail (Marion County Trail Segments) site is located approximately two and one-half miles southwest of the town of Durham in Marion County, Kansas. The site is reached from roads in Township 18S, Range 1E bordering sections 24/19 (an unimproved road) and 34/35 (FAS 184). The contains one contributing resource (a rutted Trail segment) and one non-contributing resource (FAS 184 which disrupts the continuity of the ruts to the southwest of the site).

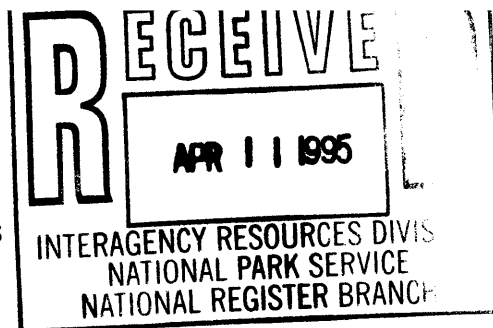
The site consists of a long rutted segment described by the National Park Service as "outstanding."¹ The ruts trend southwest-northeast and continue for approximately 16,000 feet (3.03 miles) across unbroken prairie land. The ruts begin in section 24 at the unimproved section line road, and extend southwestward in a corridor approximately twelve meters wide which passes through sections 25, 26, 35, and extends approximately 160 meters into section 34. At times as many as four parallel swales are visible. The most visible segment occurs where the ruts pass from section 24 into section 25, in an area known as the "blowout" where wind and water erosion, accelerated by grazing cattle, have created deeply etched ruts. At this point, the main passage is some four feet deep and 4.5 meters wide, with four separate swales visible. At the southwestern edge of section 25 and the southeastern edge of section 26, the ruts turn slightly west (235 degrees east of north) while crossing a low drainage, but apart from this, the segment proceeds in a nearly straight line varying in heading from 210 to 230 degrees east of north.

The site is generally flat; elevation varies from 1450 feet at the northeast end of the segment, to 1520 feet at the southeastern end, establishing a gradual rise of seventy feet over the three miles. Along the segment, the ruts tend to follow the rises, crossing over lower drainage systems. The vegetation on the site is short grass, indicative of cattle pasture. The surrounding terrain outside of the site boundaries is utilized either as pasture or cultivated land. The only intrusions onto the visual scene are the tracks of the St. Louis Southwestern Railroad which cross the ruts at the point they are interrupted by FAS 184, and a simple power line supported by wooden poles which follows the road. These intrusions are minimal in impact, and do not mar the vistas of grass and ruts which the site affords.

The environmental context of the site is excellent, as the ruts lie in uncultivated areas, and the continuing presence of the ruts provides integrity of location and setting. The presence of natural vegetation and the absence of development have allowed the ruts to retain aspects of the historic visual context, thereby providing a sense of feeling and association with the related historic contexts of the Santa Fe Trail.

United States Department of the Interior
National Park Service

National Register of Historic Places
Continuation Sheet



Santa Fe Trail (Marion County Trail Segments); Marion Co., KS;
Historic Resources of the Santa Fe Trail, 1821-1880
Section number 2

Page 3

Endnotes

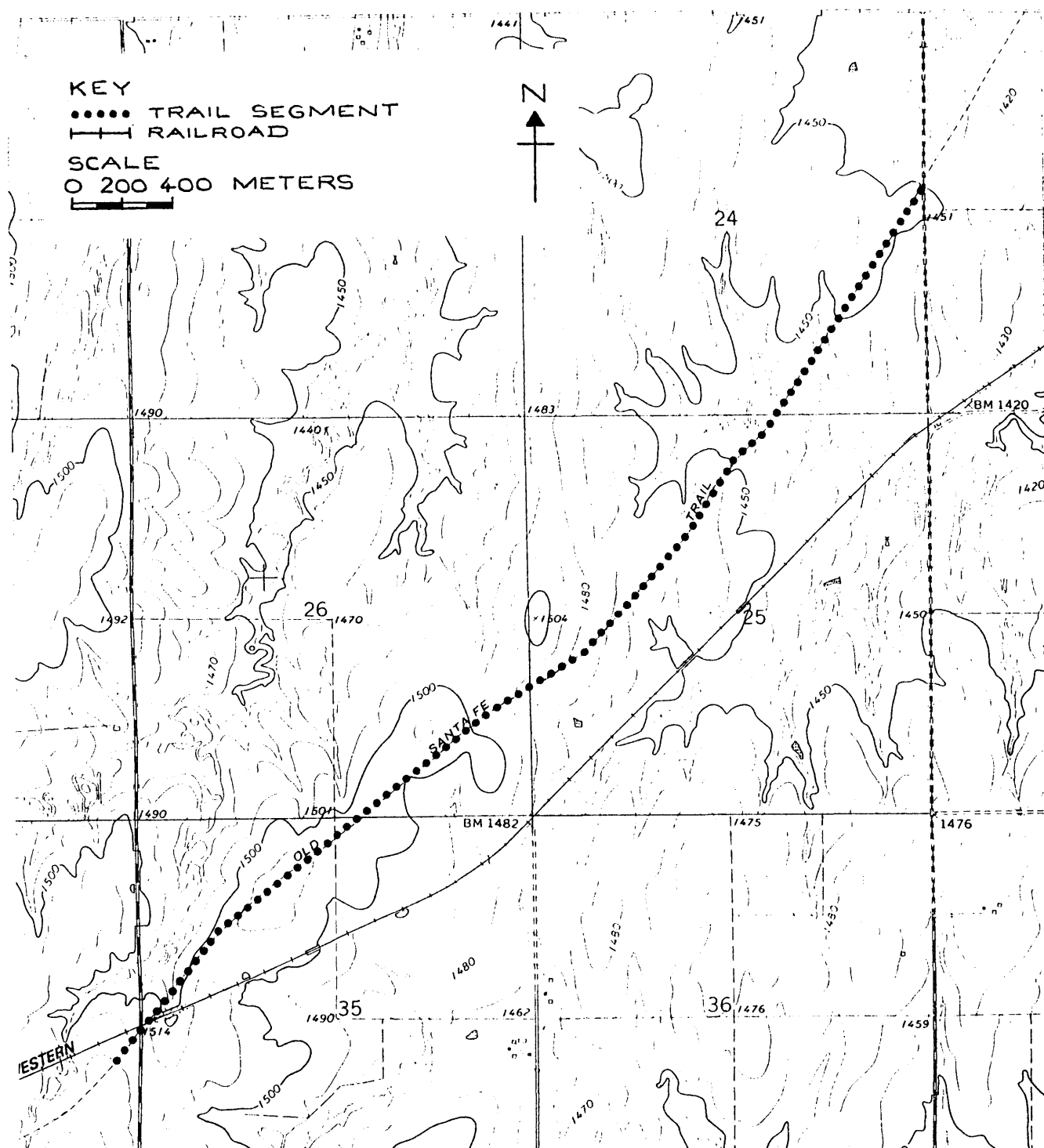
1. United States Department of the Interior/National Park Service, Santa Fe National Historic Trail: Comprehensive Management and Use Plan (Washington, D.C.: U.S. Government Printing Office, 1990), p.98.

United States Department of the Interior
National Park Service

National Register of Historic Places
Continuation Sheet

Santa Fe Trail (Marion County Trail Segments); Marion Co., KS;
Historic Resources of the Santa Fe Trail, 1821-1880
Section number 7

Sketch Map



**United States Department of the Interior
National Park Service**

**National Register of Historic Places
Continuation Sheet**

**Santa Fe Trail (Marion County Trail Segments); Marion Co., KS;
Historic Resources of the Santa Fe Trail, 1821-1880
Section number 8**

Page 5

Narrative Statement of Significance

Summary

The Santa Fe Trail (Marion County Trail Segments) site is eligible for the National Register under Criterion A as a reflection of historically-significant Santa Fe Trail traffic. The ruts are significant within the areas of commerce and transportation. The property fulfills the requirements of the Historic Trail property type as outlined within Section F of the Historic Resources of the Santa Fe Trail, 1821-1880 Multiple Property Documentation Form (hereafter, Santa Fe Trail MPS). The site's period of significance begins with the initiation of wagon movement over the Trail in 1822 and ends with the declining use of this portion of the Trail in 1870. The ruts retain integrity in location, setting, feeling and association and bear witness to the Trail's importance in trans-Mississippi transport in the late antebellum period. Thus, they materially reflect important historic events outlined in the historic contexts: International Trade on the Mexican Road, 1821-1846; The Mexican War and the Santa Fe Trail, 1846-48; and Expanding National Trade on the Santa Fe Trail, 1848-1865.

History

The Marion County segment of the Santa Fe Trail between Council Grove and the Arkansas River was used from early Trail days. These ruts comprise the longest extant rut segment in Kansas, and are located approximately two miles south-southwest of the Cottonwood Creek Crossing, a prominent Trail camping ground. In use by the time of the Sibley Commission, surveyor Joseph C. Brown described the Cottonwood Crossing in his field notes.¹ Others who passed over and wrote about this area of the Trail include Josiah Gregg (1831), Matt Field (1839) and Susan Shelby Magoffin (1846).² The heavy use of this Trail segment and the nearby camp site is evidenced by an 1859 traveler who "reported that an estimated 700 travelers were camped at the Cotton-wood Crossing at one time."³ By 1834, a military presence is recorded for the area when Captain Clifton Wharton took a company of dragoons from Fort Gibson to the Cottonwood Crossing where they met the spring caravan of Santa Fe traders, with Josiah Gregg as captain, whom they subsequently escorted to the Cimarron Crossing of the Arkansas.⁴

These ruts are also associated with the town of Durham, Kansas, which emerged due to Trail proximity. About 1856, a stage station and trading ranch were begun at the Cottonwood Crossing.⁵ Atlantic Abraham and Ira Moore purchased the station and ranch in 1858, and operated them until 1870-71 when the railroad arrived, ending this segment of Trail.⁶ A. A. Moore became Postmaster of Marion County's first post office in 1861.⁷ His property became

**United States Department of the Interior
National Park Service**

**National Register of Historic Places
Continuation Sheet**

**Santa Fe Trail (Marion County Trail Segments); Marion Co., KS;
Historic Resources of the Santa Fe Trail, 1821-1880
Section number 8**

Page 6

the largest trading ranch on the Trail west of Council Grove.⁸ He opened a store in Durham in 1861, and the town came to provide food and shelter for Trail travellers.⁹

The ruts contained within this site retain sufficient visual integrity to ensure qualities of feeling and association; integrity of location and setting is very strong. This site currently evokes its historic role in the trade and transportation network of the Santa Fe Trail.

United States Department of the Interior
National Park Service

National Register of Historic Places
Continuation Sheet

Santa Fe Trail (Marion County Trail Segments); Marion Co., KS;
Historic Resources of the Santa Fe Trail, 1821-1880
Section number 8

Page 7

Endnotes

1. Hobart E. Stocking, The Road to Santa Fe (New York: Hastings House, 1971), p. 99.
2. Josiah Gregg, The Commerce of the Prairies, Edited by Milo Milton Quaife, Bison Book edition (Lincoln, Nebraska and London: University of Nebraska Press, 1967), p. 40; John E. Sunder, ed., Matt Field on the Santa Fe Trail (Norman: University of Oklahoma Press, 1960), pp. 3, 83; Stella M. Drumm, ed., Down the Santa Fe Trail and Into Mexico: The Diary of Susan Shelby Magoffin, 1846-1847, (New Haven: Yale University Press, 1926 and 1962; reprint ed., Lincoln, Nebraska and London: University of Nebraska Press, 1982), pp. 27-28.
3. United States Department of the Interior/National Park Service, "Santa Fe Trail Site/Segment Survey Form: Site Number 83," unpublished document, mimeographed, March 24, 1988, p. 3.
4. Dean Earl Wood, The Old Santa Fe Trail From the Missouri River (Kansas City: E.L. Mendenhall, Inc., 1955), pp. 93-94; Leo E. Oliva, Soldiers on the Santa Fe Trail (Norman: University of Oklahoma Press, 1967), p. 37.
5. United States Department of the Interior/National Park Service, Santa Fe National Historic Trail: Comprehensive Management and Use Plan (Washington, D.C.: Government Printing Office, 1990), p. 98.
6. Jack D. Rittenhouse, The Santa Fe Trail: A Historical Bibliography (Albuquerque: University of New Mexico Press, 1971), p. 82; United States Department of the Interior/National Park Service, Santa Fe National Historic Trail, p. 98.
7. A. T. Andreas, History of the State of Kansas (Chicago: A. T. Andreas, 1883), pp. 1255-1256.
8. United States Department of the Interior/National Park Service, Santa Fe National Historic Trail, p. 98.
9. Andreas, p. 1256.

United States Department of the Interior
National Park Service

National Register of Historic Places
Continuation Sheet

Santa Fe Trail (Marion County Trail Segments); Marion Co., KS;
Historic Resources of the Santa Fe Trail, 1821-1880
Section number 9

Page 8

Bibliography

- Andreas, A. T. History of the State of Kansas. Chicago: A. T. Andreas, 1883.
- Drumm, Stella M., ed. Down the Santa Fe Trail and Into Mexico: The Diary of Susan Shelby Magoffin, 1846-1847. New Haven: Yale University Press, 1926 and 1962; reprint ed., Lincoln, Nebraska and London: University of Nebraska Press, 1982.
- Gregg, Josiah. The Commerce of the Prairies, Edited by Milo Milton Quaife, Bison Book edition. Lincoln, Nebraska and London: University of Nebraska Press, 1967.
- Oliva, Leo E. Soldiers on the Santa Fe Trail. Norman: University of Oklahoma Press, 1967.
- Rittenhouse, Jack D. The Santa Fe Trail: A Historical Bibliography. Albuquerque: University of New Mexico Press, 1971.
- Stocking, Hobart E. The Road to Santa Fe. New York: Hastings House, 1971.
- Sunder, John E., ed. Matt Field on the Santa Fe Trail. Norman: University of Oklahoma Press, 1960.
- United States Department of the Interior/National Park Service. Santa Fe National Historic Trail: Comprehensive Management and Use Plan. Washington, D.C.: U.S. Government Printing
- United States Department of the Interior/National Park Service. "Santa Fe Trail Site/Segment Survey Form: Site Number 83." unpublished document, mimeographed. March 24, 1988. Office, 1990.
- Wood, Dean Earl. The Old Santa Fe Trail From the Missouri River. Kansas City: E.L. Mendenhall, Inc., 1955.

**United States Department of the Interior
National Park Service**

**National Register of Historic Places
Continuation Sheet**

**Santa Fe Trail (Marion County Trail Segments); Marion Co., KS;
Historic Resources of the Santa Fe Trail, 1821-1880
Section number 9**

Page 9

UTM References

E. 14 648470 4255880

Verbal Boundary Description

In Township 18S, Range 1E, beginning at a point along the unimproved section line road 600 meters south of the intersection at the northeast corner of section twenty-four, the Trail ruts trend generally northeast to southwest. They pass through the SE 1/4 of section twenty-four; pass into section twenty-five at 600 meters from the road, then cross through the NW corner of section twenty-five. The ruts then pass into section twenty-six 500 meters from the SE corner of the section, crossing the SE 1/4. They continue into the NW 1/4 of section thirty-five, ninety meters from the 1/2 mile point. They disappear momentarily near the intersection of FAS 184 and the St. Louis southwestern railroad track, then continue approximately 160 meters into the SE 1/4 of section thirty-four after which they are no longer visible due to agricultural activity. The boundaries of the site encompass a thirty-meter corridor centered on the Trail segment.

Boundary Justification

Because the ruts extend across numerous topographic features, the site boundaries followed a narrow corridor thirty meters wide centered on the ruts as suggested in National Register Bulletin #30, p. 27. The ruts are no longer visible to the southwest of this boundary due to agricultural activity.

**United States Department of the Interior
National Park Service**

**National Register of Historic Places
Continuation Sheet**

**Santa Fe Trail (Marion County Trail Segments); Marion Co., KS;
Historic Resources of the Santa Fe Trail, 1821-1880
Section number 11**

Page 10

Form Prepared By

For The URBANA Group:

Susan Enscoe/Historical Geographer
Writer

Archaeological Survey, University of Missouri-St. Louis
Colleen Hamilton and Brad Mueller/Historic Archaeologists
Field Work