

United States Department of the Interior
National Park Service

National Register of Historic Places Continuation Sheet—Additional Documentation

*Norton House
Los Angeles County, California*

Section Photos Page 14

MPS: Cultural Resources of the Recent Past—City of Pasadena

Norton House – Pasadena
Los Angeles County, California
Barbara Lamprecht, Jones & Stokes
March 24, 2008
Negative: Jones & Stokes
View: east elevation, view northwest.
CA_LosAngelesCounty_820BurleighDrive6.tiff



United States Department of the Interior
National Park Service

National Register of Historic Places Continuation Sheet—Additional Documentation

*Norton House
Los Angeles County, California*

Section Photos Page 15

MPS: Cultural Resources of the Recent Past—City of Pasadena

Norton House – Pasadena
Los Angeles County, California
Barbara Lamprecht, Jones & Stokes
March 24, 2008
Negative: Jones & Stokes
View: east elevation, view west.
CA_LosAngelesCounty_820BurleighDrive7.tiff



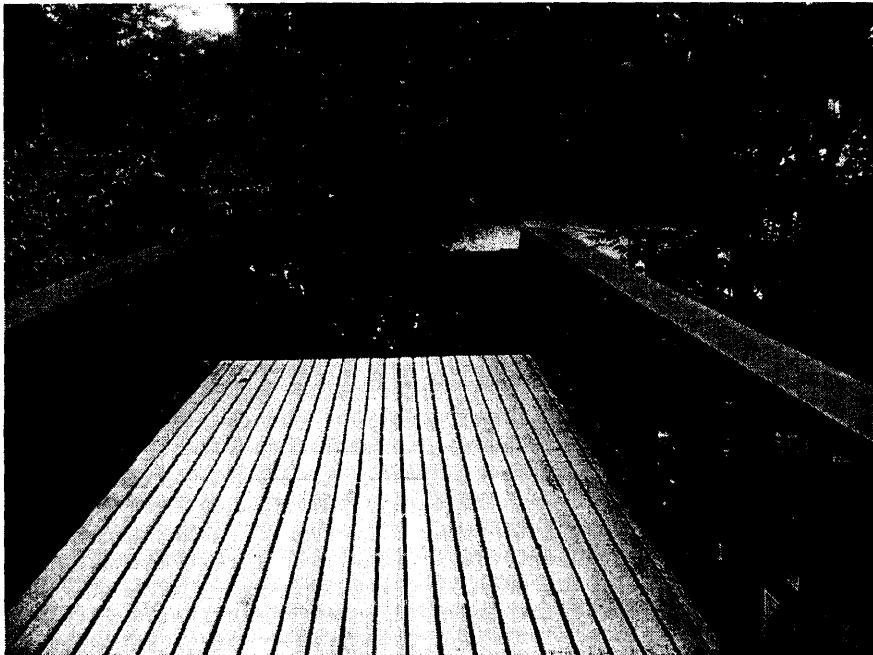
United States Department of the Interior
National Park Service

National Register of Historic Places Continuation Sheet—Additional Documentation

Section Photos Page 16

*Norton House
Los Angeles County, California
MPS: Cultural Resources of the Recent Past—City of Pasadena*

Norton House – Pasadena
Los Angeles County, California
Barbara Lamprecht, Jones & Stokes
March 24, 2008
Negative: Jones & Stokes
View: Detail of exterior walkway.
CA_LosAngelesCounty_820BurleighDrive8.tiff



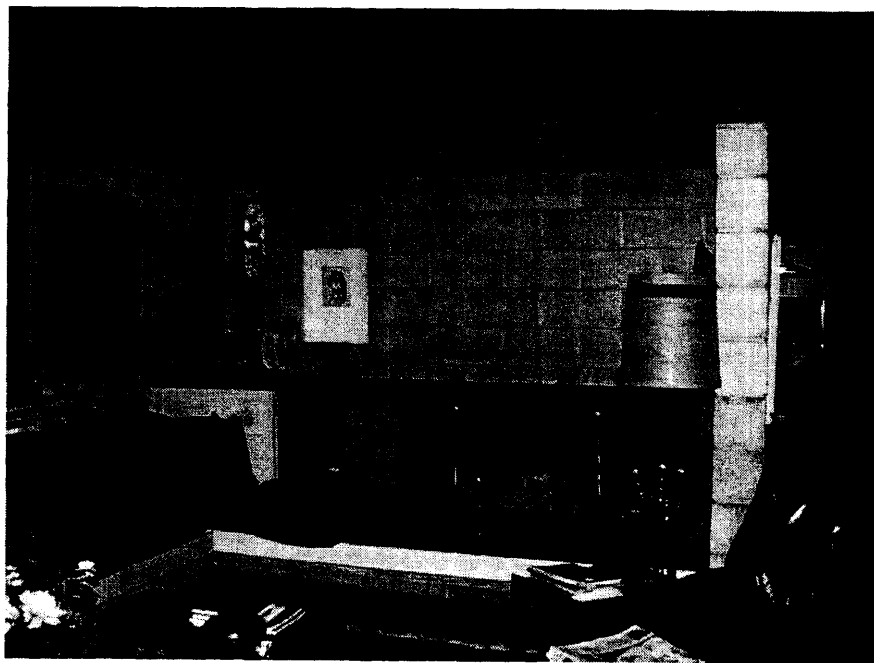
United States Department of the Interior
National Park Service

National Register of Historic Places Continuation Sheet—Additional Documentation

Section Photos Page 17

*Norton House
Los Angeles County, California
MPS: Cultural Resources of the Recent Past—City of Pasadena*

Norton House – Pasadena
Los Angeles County, California
Barbara Lamprecht, Jones & Stokes
March 24, 2008
Negative: Jones & Stokes
View: Interior detail of concrete block fireplace.
CA_LosAngelesCounty_820BurleighDrive9.tiff



United States Department of the Interior
National Park Service

National Register of Historic Places Continuation Sheet—Additional Documentation

*Norton House
Los Angeles County, California*

Section Photos Page 18

MPS: Cultural Resources of the Recent Past—City of Pasadena

Norton House – Pasadena
Los Angeles County, California
Barbara Lamprecht, Jones & Stokes
March 24, 2008
Negative: Jones & Stokes
View: Interior detail of hall.
CA_LosAngelesCounty_820BurleighDrive10.tiff



United States Department of the Interior
National Park Service

National Register of Historic Places Continuation Sheet—Additional Documentation

*Norton House
Los Angeles County, California*

Section Photos Page 19

MPS: Cultural Resources of the Recent Past—City of Pasadena

Norton House – Pasadena
Los Angeles County, California
Barbara Lamprecht, Jones & Stokes
March 24, 2008
Negative: Jones & Stokes
View: Interior detail of wall.
CA_LosAngelesCounty_820BurleighDrive11.tiff



United States Department of the Interior
National Park Service

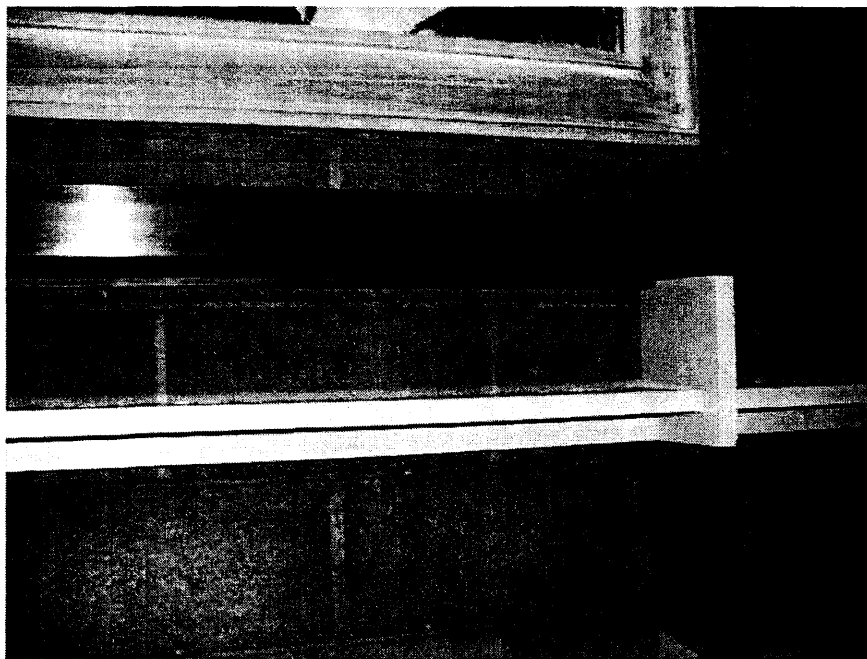
National Register of Historic Places Continuation Sheet—Additional Documentation

*Norton House
Los Angeles County, California*

Section Photos Page 20

MPS: Cultural Resources of the Recent Past—City of Pasadena

Norton House – Pasadena
Los Angeles County, California
Barbara Lamprecht, Jones & Stokes
March 24, 2008
Negative: Jones & Stokes
View: Interior detail of concrete block wall.
CA_LosAngelesCounty_820BurleighDrive12.tiff



United States Department of the Interior
National Park Service

National Register of Historic Places Continuation Sheet—Additional Documentation

*Norton House
Los Angeles County, California*

Section Photos Page 21

MPS: Cultural Resources of the Recent Past—City of Pasadena

Norton House – Pasadena
Los Angeles County, California
Barbara Lamprecht, Jones & Stokes
March 24, 2008
Negative: Jones & Stokes
View: Interior detail of kitchen.
CA_LosAngelesCounty_820BurleighDrive13.tiff



United States Department of the Interior
National Park Service

National Register of Historic Places Continuation Sheet—Additional Documentation

*Norton House
Los Angeles County, California*

Section Photos Page 22

MPS: Cultural Resources of the Recent Past—City of Pasadena

Norton House – Pasadena
Los Angeles County, California
Barbara Lamprecht, Jones & Stokes
March 24, 2008
Negative: Jones & Stokes
View: Interior detail of floor.
CA_LosAngelesCounty_820BurleighDrive14.tiff



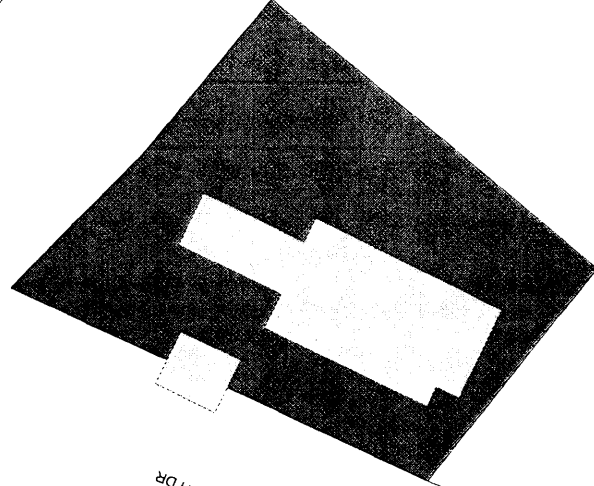
Norton House - 820 Burleigh Drive, Pasadena, CA

LAGUNA RD

BURLEIGH DR

BURLEIGH DR

LAGUNA RD



Legend

Parcel Lines

Norton House Property Boundaries

Norton House Footprint

