



5509

LEE M. FORD HOUSE (401 4th AVE. No.)

GREAT FALLS, MONTANA 59401

BERNICE DE HAAS, PHOTOGRAPHER

NOVEMBER 29, 1988

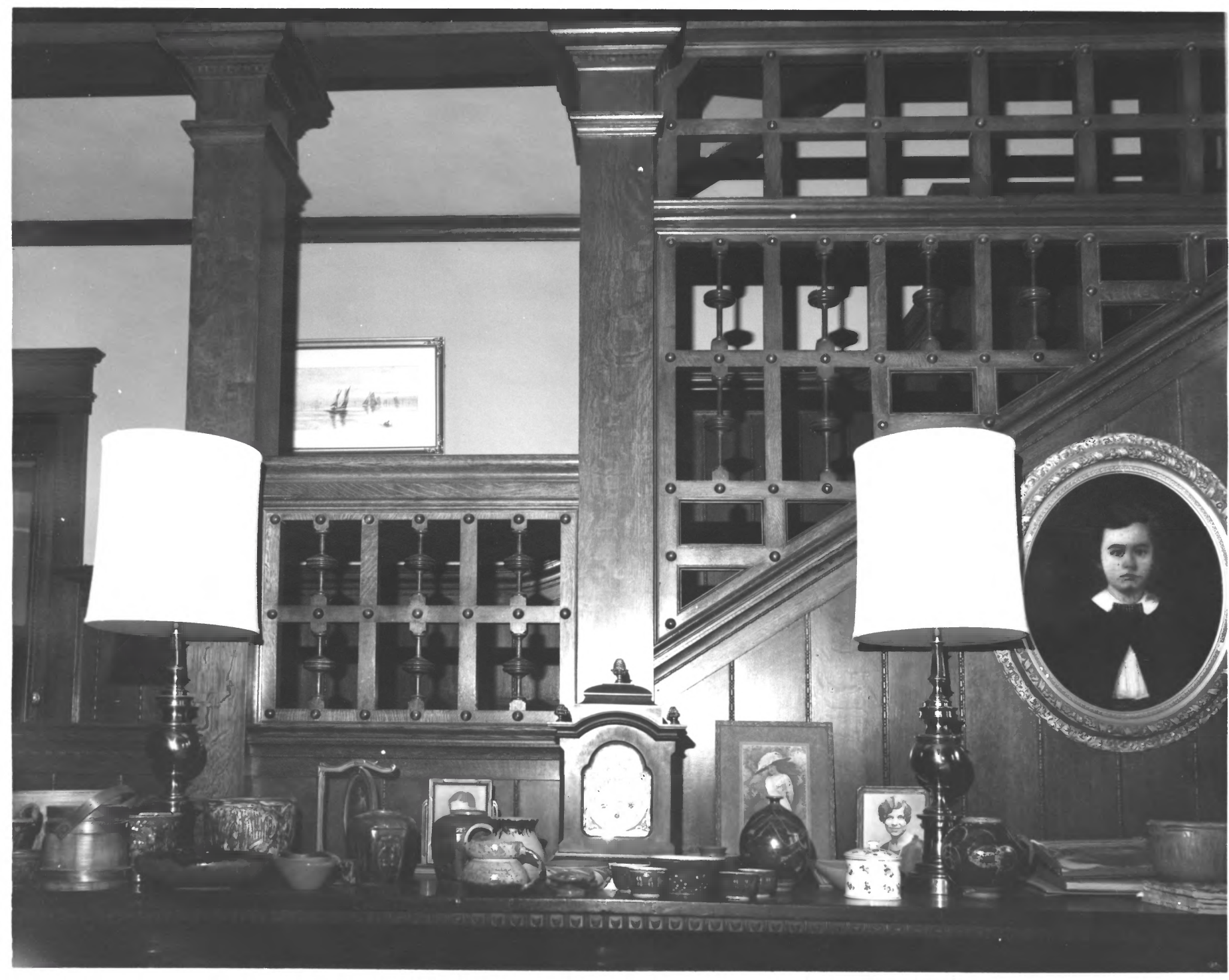
Negative LOCATION -

JOHN N. DE HAAS, 1021 So. TRACY, BOZEMAN, MONTANA 59715

NEGATIVE No. 5,509

FRONT AND EAST SIDE OF EXTERIOR

LOOKING NORTHWEST, SHOWING PORTE COCHERE.



LEE M. FORD HOUSE (901 4th Ave, No.)

GREAT FALLS, MONTANA 59401

BERNICE DE HAAS, PHOTOGRAPHER

NOVEMBER 29, 1988

NEGATIVE LOCATION -

JOHN N. DE HAAS, 1021 SO. TRACY, BOZEMAN, MT. 59715

NEGATIVE NO. 5525

FRONT STAIRS IN RECEPTION HALL (LOOKING NORTH)



5526

LEE M. FORD HOUSE (401 4th AVE. No.)

GREAT FALLS, MONTANA 59401

BERNICE DE HAAS, PHOTOGRAPHER

NOVEMBER 29, 1988

NEGATIVE LOCATION -

JOHN N. DE HAAS 1021 SO. TRACY, BOZEMAN, MT. 59715

NEGATIVE No. 5526

FIREPLACE IN LIBRARY (LOOKING NORTHWEST)



LEE M. FORD HOUSE (401 4th AVE. No.)

GREAT FALLS, MONTANA 59401

BERNICE DE HAAS, PHOTOGRAPHER

NOVEMBER 29, 1988

NEGATIVE LOCATION

JOHN N. DE HAAS 1021 SO. TRACY, BOZEMAN MT. 59715

NEGATIVE NO. 5505

FRONT OF GARAGE LOOKING NORTH



LEE M. FORD HOUSE (401 4th AVE. No.)

5514

GREAT FALLS, MONTANA, 59401

BERNICE DE HAAS, PHOTOGRAPHER

NOVEMBER 29, 1988

NEGATIVE LOCATION -

JOHN N. DE HAAS, 1021 SO. TRACY, BOZEMAN, MONTANA
59715

NEGATIVE NO. 5512

FRONT AND WEST SIDES OF EXTERIOR
LOOKING NORTHEAST.