



Smith Gallegos House
San Luis Historic District
San Luis, Co. Nov. 1975
Gordon Ayres Photography
825 N. Indian Hill Claremont
Ca.

View is looking west toward the
house

DEC 22 1978

MAY 2 1977



Choury Easterday House #2
San Luis Hist. Dist.
San Luis, Co. 11/11/75
Gordon Ayres Photography
825 N. Indian Hill
Claremont, Ca.

Looking south west towards hc
house

DEC 22 1978

MAY 2 1977



Church of the Most Precious
Blood #3

San Luis Hist. Dist.

San Luis Colorado

Gordon Ayres Photo 11/75

825 N. Indian Hills

Claremont Ca. DEC 22 1978

looking north to the
front of the church

MAY 2 1977

JAQUEZ GROCERY

ROYAL TOWN
COLA



Jacques Grocery 4
San Luis Hist. Dist.
San Luis, Co. 11/11/75

Gordon Ayres Photography
825 N. Indian Hill
Claremont, Ca.

Looking east towards the
grocery MAY 2 1977

MAY 2 1977



Convent

San Luis Hist. District

San Luis Colorado 12/11/76

Floyd Patterson

State Historical Society

200 14th Ave.

Denver, Co. 80203

View is looking east

DEC 2 1978

MAY 2 1977



La Morada 6
San Luis Historic Dist
San Luis, Co. 11/11/75
Gordon Ayre Photography
825 N. Indian Hill
Claremont, Ca.

View is looking north west

MAY 2 1977

11/11/75



ROMERO'S HARDWARE

ROMERO'S
Sentry
HARDWARE

HUNTING
and
FISHING
Licenses
KAYAKS
XTACKLE
XTROUBLE
XTROUBLE

GEORGE

SUPERMARKET

ROMERO & SONS INC.

D.D. SUPERMARKET



Salazar's Store 7
San Luis Historic District
San Luis, Co. 12/11/76
Floyd Patterson
State Historical Society
200 14th Ave

Denver, Colorado DEC 11 1978

View is looking west

MAY 2 1977

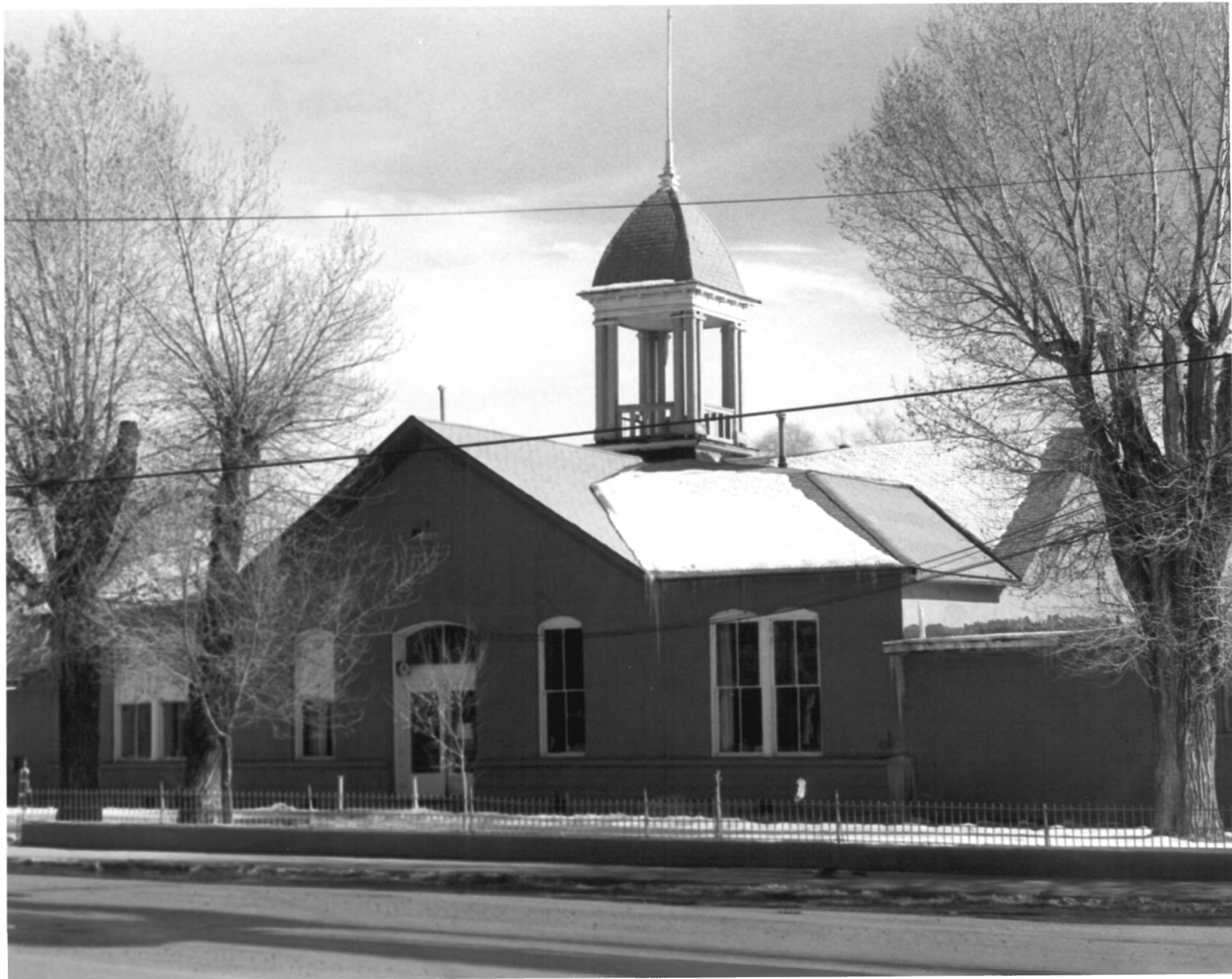


Mondragon Grocery 8
San Luis Historic District
San Luis Co. 12/11/76
Floyd Patterson
State Historical Society
200 14th Ave.

Denver, Co. 80203

View is looking south west.

MAY 2 1977



Costilla County Courthouse
#9

San Luis Hist. Dist.

San Luis Co.

Floyd Patterson 12/76

State Historical Society

200 14th Ave **MAY 2 1977**

Denver, Co.

looking east to the front
of the building

DEC 22 1978



Small window on the upper floor of the main building.

Window with curtains on the ground floor of the main building.

Small square window on the ground floor of the main building.

MAN ST
1000 E

CO
OFF

Nsario Gallegos Store #10
~~XXXXXXXXXX~~ San Luis Hist.
Dist.

San Luis Colorado
Floyd Patterson 12/76
~~State Historical Society~~
200 14th Ave.
Denver Co. MAY 2 1977

View is southeast towards
the store. DEC 22 1978



#11

Zegob Store

San Luis Historic Dist.

San Luis, Co. 11/11/75

Gordon Ayres Photography

825 N. Indian Hill

Claremont, Ca.

View is looking east.

DEC 22 1978 MAY 2 1977



WALSH'S DEPT STORE
DRY GOODS CLOTHING SHOES

#12

San Luis Valley State Bank
San Luis Historic District
San Luis Colorado 12/11/76
Floyd Patterson
State Historical Society

200 14th Ave.

Denver, Co. 80203

View is looking west.

DEC 22 1978

MAY 2

1977



Emma Hacienda #13
San Luis Historic District
San Luis, Colorado 11/11/75
Gordon Ayres Photography
825 N. Indian Hill
Claremont, Ca.

View is looking northwest

DEC 22 1978 MAY 2 1977



14

San Luis People's Ditch

San Luis Historic Dist.

San Luis, Co. 12/10/76

Floyd Patterson

DEC 22 1976

State Historical Society

200 14th Ave.

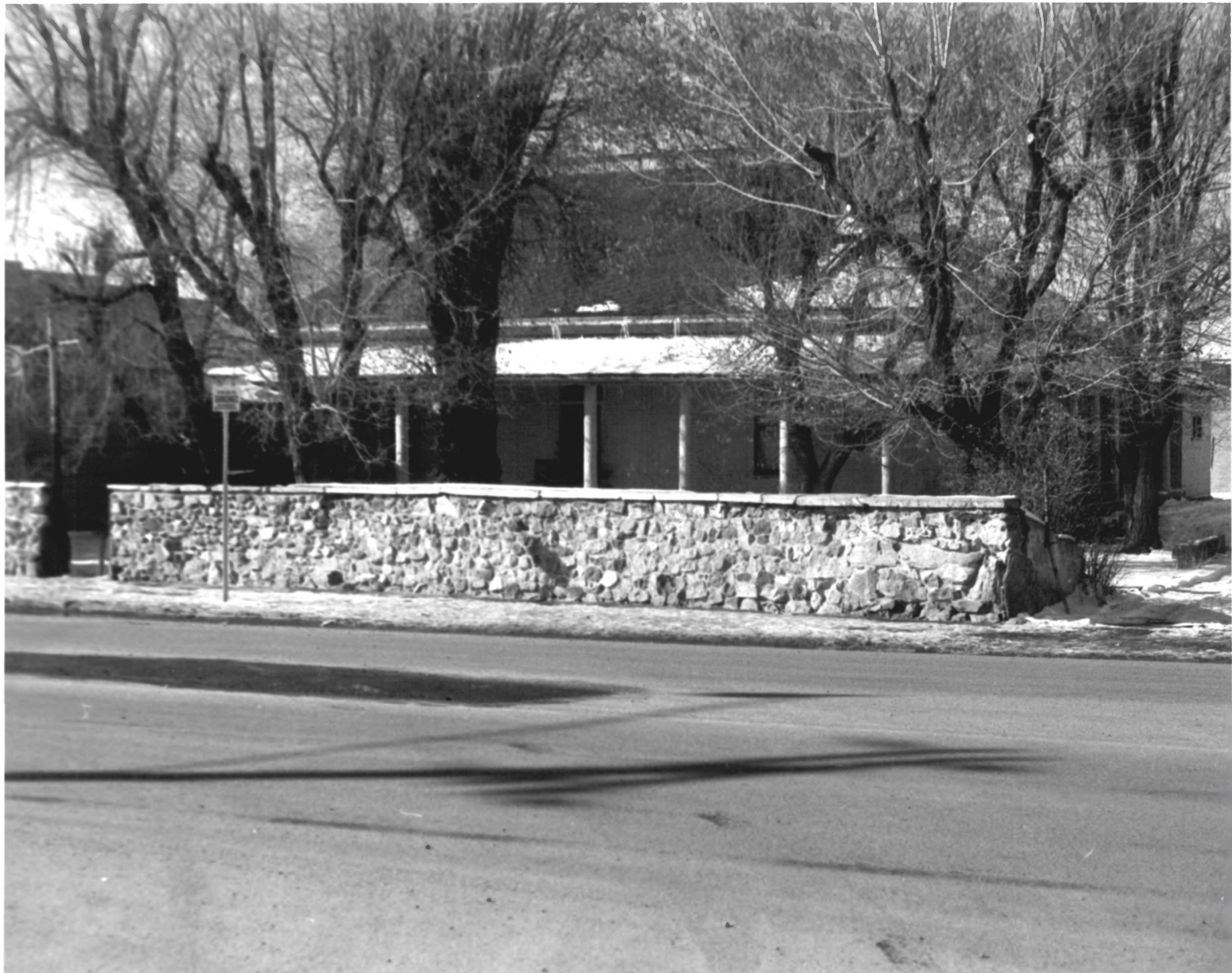
Denver, Co. 80203

MAY 2 1977

Picture is taken just south of town where the ditch crosses

Colo. 159. View is looking

east towards the Vega.



#15

Valencia Hotel
San Luis Historic District
San Luis, Co. 12/10/76
Floyd Patterson
State Historical Society
200 14th Ave.
Denver, Co. 80203

DEC 22 1976

View is looking west towards
the hotel.

MAY 2 1977



The Vega

#16

San Luis Hist. Dist.

San Luis, Colorado

Floyd Patterson 12/76

200 14th Ave.

Denver Colorado

View is east towards
the Vega.

MAY 2 1977

DEC 22 1978



#17a

Old Highschool

San Luis Historic Dist.

San Luis Co. 12/10/76

Floyd Patterson

State Historical Society

~~200 14th Ave.~~

Denver. Co.

DEC 22 1978

View is looking north and east

MAY 2 1977

LLIPS
6



JCT
C
142



#17b

Old Highschool

San Luis Historic District

San Luis, Co. 12/10/76

Floyd Patterson

State Historical Society

200 14th Ave.

Denver, Co. 80203

View is looking north east.

Note Church behind bldg.

DEC 22 1978

MAY 2 1977



#18

Residential area

San Luis Historic District

San Luis Co. 12/10/76

Floyd Patterson

State Historic Society

200 14th Ave.

Denver, Co. **MAY 2 1977**

View is looking north and east.

DEC 22 1978



#19

House

San Luis Historic District

San Luis Co. 12/10/76

Floyd Patterson

State Historical Society

200 14th Ave.

Denver, Co. 80203

DEC 22 1978

View is looking east to the
front facade.

MAY 2 1977



#20

Costilla County Community Ctr.

San Luis Historic Dist.

San Luis, Co. 12/10/76

Floyd Patterson

State Historical Society

DEC 22 1976

~~200 7th Ave.~~
200 14th Ave.

Denver, Co. 80203

MAY 2 1977

View is looking south and east.



#21

General view east side Main
San Luis Historic District
San Luis, Co. 12/10/76

Floyd Patterson
State Historical Society

~~200 14th Ave.~~ DEC 22 1978

Denver, Co. 80203

View is looking east.

MAY 2 1977



#22

Western boundary
San Luis Historic District
San Luis, Co. 12/10/76
Floyd Patterson
State Historical Society

200 14th Ave.

Denver, Co. 80203 **DEC 22 1978**

Boundary run along line of
vegetation -- the river --
note new construction to the
right which is outside of the
historic district.

MAY 2 1977



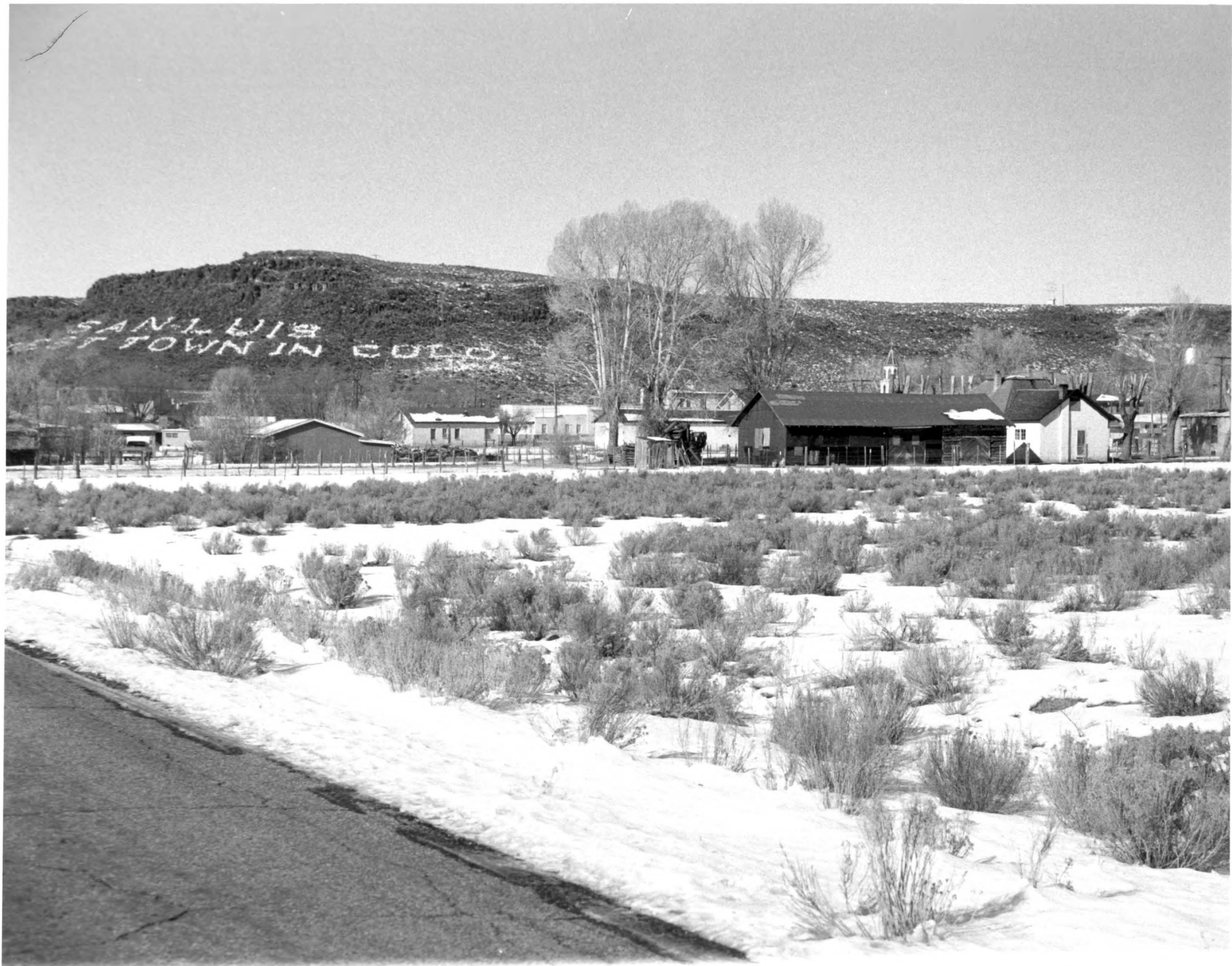
#23

Looking up Gaspar Street
San Luis Historic District
San Luis, Co. 11/11/75
Gordon Ayres Photography
825 N. Indian Hill
Claremont, Ca.

Looking north west towards the
county courthouse.

MAY 2 1977

DEC 22 1978



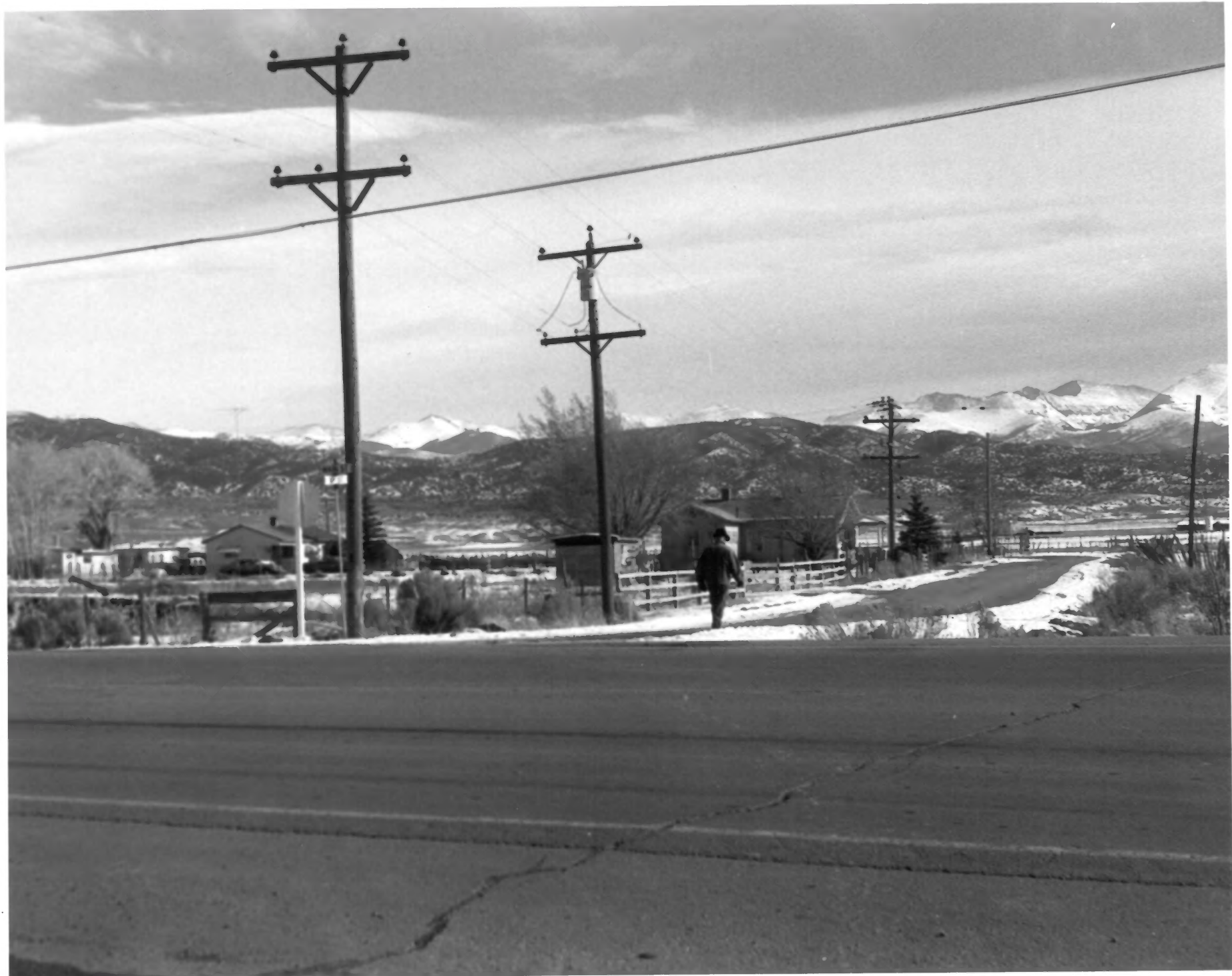
#24

San Luis Historic District
San Luis, Co. 12/10/76
Floyd Patterson
State Historical Society
200 14th Ave.
Denver, Co. 80203

Looking west towards San Luis.

DEC 22 1978

MAY 2 1977



~~XXXXXXXXXXXXXXXXXXXX~~ # 25

San Luis Hist. Dist.

San Luis, Co.

Floyd Patterson 12/76

State Historical Society

200 14th Ave.

Denver

View is east along first street.

MAY 2 1977

DEC 22 1978