





KENTUCKY HERITAGE COUNCIL
STATE HISTORIC PRESERVATION OFFICE
FRANKFORT, KENTUCKY 40601

Name ARMSTRONG ROW

Location W.2nd St., Maysville, Mason Co., KY

Photographer Doug Loescher

Date Taken December, 1983

Negative Location City of Maysville

View Front elevation, looking northeast

Photo # 1



PEPSI

BOARDING
HOUSE



KENTUCKY HERITAGE COUNCIL
STATE HISTORIC PRESERVATION OFFICE
FRANKFORT, KENTUCKY 40601

Name ARMSTRONG ROW

Location W. 2nd St., Maysville, Mason Co., KY

Photographer Doug Loescher

Date Taken December, 1983

Negative Location City of Maysville

View Front elevation, looking northwest

Photo # 2





KENTUCKY HERITAGE COUNCIL
STATE HISTORIC PRESERVATION OFFICE
FRANKFORT, KENTUCKY 40601

Name ARMSTRONG ROW

Location W.2nd St., Maysville, Mason Co., KY

Photographer Doug Loescher

Date Taken December, 1983

Negative Location City of Maysville

View Front elevation, looking north

Photo # 3





KENTUCKY HERITAGE COUNCIL
STATE HISTORIC PRESERVATION OFFICE
FRANKFORT, KENTUCKY 40601

Name ARMSTRONG ROW

Location W. 2nd St., Maysville, Mason Co., KY

Photographer Doug Loescher

Date Taken December, 1983

Negative Location City of Maysville

View Rear elevation, looking south

Photo # 4





KENTUCKY HERITAGE COUNCIL
STATE HISTORIC PRESERVATION OFFICE
FRANKFORT, KENTUCKY 40601

Name ARMSTRONG ROW

Location W.2nd St., Maysville, Mason Co., KY

Photographer Doug Loescher

Date Taken December, 1983

Negative Location City of Maysville

View Adjacent buildings to the east,
looking north.

Photo # 5



(11)



KENTUCKY HERITAGE COUNCIL
STATE HISTORIC PRESERVATION OFFICE
FRANKFORT, KENTUCKY 40601

Name ARMSTRONG ROW, 207 West Second

Location W.2nd St., Maysville, Mason Co., KY

Photographer Doug Loescher

Date Taken December, 1983

Negative Location City of Maysville

View Front elevation, looking W

Photo # 6





KENTUCKY HERITAGE COUNCIL
STATE HISTORIC PRESERVATION OFFICE
FRANKFORT, KENTUCKY 40601

Name ARMSTRONG ROW, 209 West Second

Location W.2nd St., Maysville, Mason Co., KY

Photographer Doug Loescher

Date Taken December, 1983

Negative Location City of Maysville

View Front elevation, looking W

Photo # 7



07

5



KENTUCKY HERITAGE COUNCIL
STATE HISTORIC PRESERVATION OFFICE
FRANKFORT, KENTUCKY 40601

Name ARMSTRONG ROW, 211 W. Second

Location W.2nd St., Maysville, Mason Co., KY

Photographer Doug Loescher

Date Taken December, 1983

Negative Location City of Maysville

View Front elevation, looking W

Photo # 8





KENTUCKY HERITAGE COUNCIL
STATE HISTORIC PRESERVATION OFFICE
FRANKFORT, KENTUCKY 40601

Name ARMSTRONG ROW

Location W. 2nd St., Maysville, Mason Co., KY

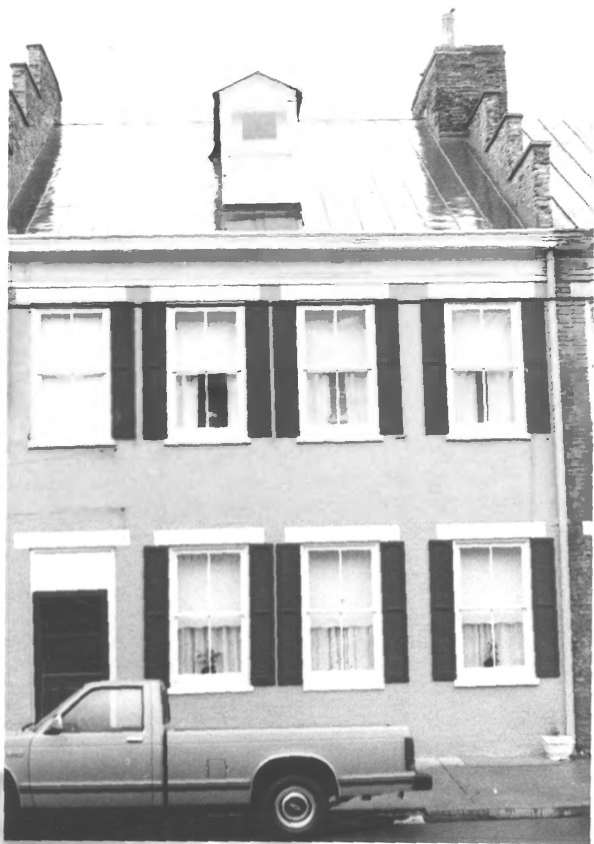
Photographer Doug Loescher

Date Taken December, 1983

Negative Location City of Maysville

View Rear elevation of 211 Second Street

Photo # 9





KENTUCKY HERITAGE COUNCIL
STATE HISTORIC PRESERVATION OFFICE
FRANKFORT, KENTUCKY 40601

Name ARMSTRONG ROW, 213 West Second

Location W. 2nd St., Maysville, Mason Co., KY

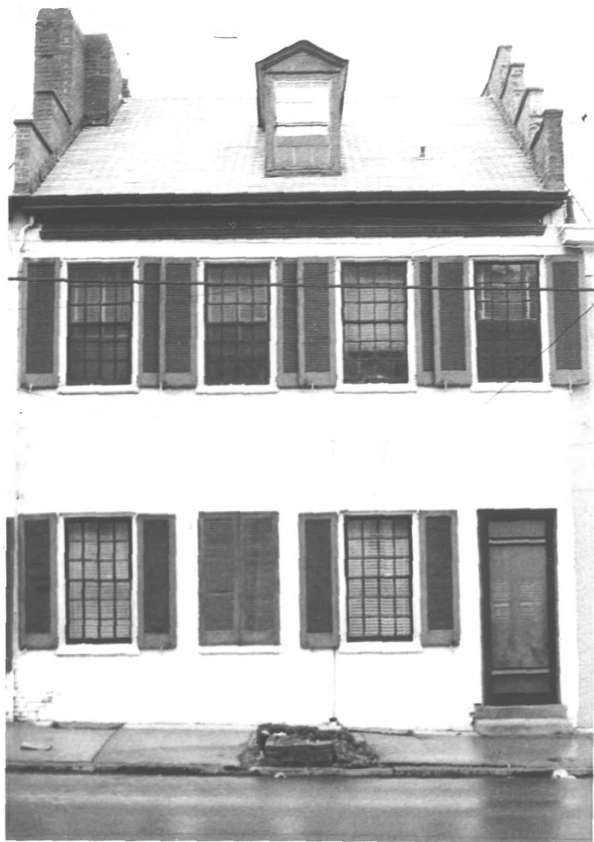
Photographer Doug Loescher

Date Taken December, 1983

Negative Location City of Maysville

View Front elevation, looking N

Photo # 10



47



KENTUCKY HERITAGE COUNCIL
STATE HISTORIC PRESERVATION OFFICE
FRANKFORT, KENTUCKY 40601

Name ARMSTRONG ROW, 215 West Second

Location W.2nd St., Maysville, Mason Co., KY

Photographer Doug Loescher

Date Taken December 1983

Negative Location City of Maysville

View Front elevation

Photo # 11





KENTUCKY HERITAGE COUNCIL
STATE HISTORIC PRESERVATION OFFICE
FRANKFORT, KENTUCKY 40601

Name ARMSTRONG ROW, 217 West Second

Location W.2nd St., Maysville, Mason Co., KY

Photographer Doug Loescher

Date Taken December, 1983

Negative Location City of Maysville

View Front elevation

Photo # 12





KENTUCKY HERITAGE COUNCIL
STATE HISTORIC PRESERVATION OFFICE
FRANKFORT, KENTUCKY 40601

Name ARMSTRONG ROW, 219 West Second

Location W.2nd St., Maysville, Mason Co., KY

Photographer Doug Loescher

Date Taken December, 1983

Negative Location City of Maysville

View Front elevation

Photo # 13





KENTUCKY HERITAGE COUNCIL
STATE HISTORIC PRESERVATION OFFICE
FRANKFORT, KENTUCKY 40601

Name ARMSTRONG ROW, 221 West Second

Location W.2nd St., Maysville, Mason Co., KY.

Photographer Doug Loescher

Date Taken December, 1983

Negative Location City of Maysville

View Front elevation

Photo # 14





KENTUCKY HERITAGE COUNCIL
STATE HISTORIC PRESERVATION OFFICE
FRANKFORT, KENTUCKY 40601

Name ARMSTRONG ROW, 223 West Second

Location W.2nd St., Maysville, Mason Co., KY

Photographer Doug Loescher

Date Taken December, 1983

Negative Location City of Maysville

View Front elevation

Photo # 15





KENTUCKY HERITAGE COUNCIL
STATE HISTORIC PRESERVATION OFFICE
FRANKFORT, KENTUCKY 40601

Name ARMSTRONG ROW, 225 West Second

Location W.2nd St., Maysville, Mason Co., KY

Photographer Doug Loescher

Date Taken December, 1983

Negative Location City of Maysville

View Front elevation

Photo # 16





KENTUCKY HERITAGE COUNCIL
STATE HISTORIC PRESERVATION OFFICE
FRANKFORT, KENTUCKY 40601

Name ARMSTRONG Row, 227 West Second

Location W.2nd St., Maysville, Mason Co., KY.

Photographer Doug Loescher

Date Taken December, 1983

Negative Location City of Maysville

View Front Elevation

Photo # 17



SPEED
LIMIT
25



KENTUCKY HERITAGE COUNCIL
STATE HISTORIC PRESERVATION OFFICE
FRANKFORT, KENTUCKY 40601

Name 237 West Second Street

Location W.2nd St., Maysville, Mason Co., KY.

Photographer Doug Loescher

Date Taken December, 1983

Negative Location City of Maysville

View Structures to the west of Armstrong Row

Photo # 18