

60-211-4100-61

UNITED STATES DEPARTMENT OF THE INTERIOR
NATIONAL PARK SERVICE60-17-77
FOR NPS USE ONLY

RECEIVED

DATE ENTERED

NATIONAL REGISTER OF HISTORIC PLACES
INVENTORY -- NOMINATION FORMSEE INSTRUCTIONS IN HOW TO COMPLETE NATIONAL REGISTER FORMS
TYPE ALL ENTRIES -- COMPLETE APPLICABLE SECTIONS

1 NAME

HISTORIC

Ragland House

AND/OR COMMON

2 LOCATION

STREET & NUMBER

1617 Center

NOT FOR PUBLICATION

CITY, TOWN

CONGRESSIONAL DISTRICT

Little Rock,

VICINITY OF

Second

STATE

CODE

COUNTY

CODE

Arkansas

05

Pulaski

119

3 CLASSIFICATION

CATEGORY

OWNERSHIP

STATUS

PRESENT USE

DISTRICT

PUBLIC

X OCCUPIED

AGRICULTURE

MUSEUM

X BUILDING(S)

X PRIVATE

UNOCCUPIED

COMMERCIAL

PARK

STRUCTURE

BOTH

WORK IN PROGRESS

EDUCATIONAL

X PRIVATE RESIDENCE

SITE

PUBLIC ACQUISITION

ACCESSIBLE

ENTERTAINMENT

RELIGIOUS

OBJECT

IN PROCESS

X YES: RESTRICTED

GOVERNMENT

SCIENTIFIC

BEING CONSIDERED

YES: UNRESTRICTED

INDUSTRIAL

TRANSPORTATION

NO

MILITARY

OTHER:

4 OWNER OF PROPERTY

NAME

Otis E. & Wanda L. Hamilton

STREET & NUMBER

1617 Center Street

CITY, TOWN

Little Rock,

VICINITY OF

STATE

Arkansas

5 LOCATION OF LEGAL DESCRIPTION

COURTHOUSE,

REGISTRY OF DEEDS, ETC. Circuit Clerk's Office

STREET & NUMBER

Pulaski County Courthouse

CITY, TOWN

Little Rock,

STATE

Arkansas

6 REPRESENTATION IN EXISTING SURVEYS

TITLE

DATE

FEDERAL STATE COUNTY LOCAL

DEPOSITORY FOR
SURVEY RECORDS

CITY, TOWN

STATE

7 DESCRIPTION

CONDITION

☐ EXCELLENT
☒ GOOD
☐ FAIR

☐ DETERIORATED
☐ RUINS
☐ UNEXPOSED

CHECK ONE

☐ UNALTERED
☒ ALTERED

CHECK ONE

☒ ORIGINAL SITE
☐ MOVED DATE _____

DESCRIBE THE PRESENT AND ORIGINAL (IF KNOWN) PHYSICAL APPEARANCE

The Ragland House, located in Little Rock's historic Quapaw Quarter district, was constructed in 1891-92 by architect, Charles L. Thompson. The house presents characteristics of Queen Anne architecture in its collection of Victorian elements. Dominant features of the house include a corner tower, variety of textural usage, bay windows, stained glass and ornamental woodwork.

Of frame construction, the Ragland House rests on a brick foundation and is topped by a multi-gable high-hipped slate roof. Four brick chimneys with corbelling and geometric patterns rise from the roofline of the house. The irregular-shaped house is sheathed in clapboard siding on the first floor level of the main wing. Clapboard siding covers both stories of the east wing. The second storey of the main wing is sheathed in alternating rows of shingles laid with staggered butts. A belt course runs around the main wing of the house directly beneath the second-story windows. The gable ends of this main section of the house are covered in waffle-patterned stick work.

The most outstanding feature of the Ragland House is a corner-tower located on the southeast corner. This two-story tower is capped by a bell-cast roof with a finial. A brick chimney marks the south side of the tower. Facing west on the tower on both the first and second story levels is a set of three double-hung curved windows separated by fluted mullions. These windows are topped by a horizontal leaded stained-glass transom. Located on the cornice of the tower is a pattern of Doric-capital pilasters regularly spaced with decorative circle moldings.

The facade (west elevation) of the Ragland House features a gable end on the north end covered in waffle patterned stickwork surrounding a large semi-circular window of leaded stained glass in geometric patterns. A wide double-hung window flanked on either side by narrow double-hung windows are found at the second story level under the gable end. At the first floor level is a wide single light window topped by a stained glass horizontal transom. Narrow double-hung windows flank either side of this window. Below these windows is a narrow horizontal center section of vertical flushboard flanked by small sections of diagonal flushboard. The gable and the first and second story windows are found in a slightly projected bay.

A one-story portico beginning in the center of the facade circles around the southwest corner to the south elevation. This portico is supported by delicately turned posts with decorative brackets. Beneath the cornice of the portico runs a band of small square balluster-like posts. A railing with square vertical and horizontal balusters runs around the porch.

UNITED STATES DEPARTMENT OF THE INTERIOR
NATIONAL PARK SERVICE

FOR NPS USE ONLY

RECEIVED

DATE ENTERED

**NATIONAL REGISTER OF HISTORIC PLACES
INVENTORY -- NOMINATION FORM**

CONTINUATION SHEET

ITEM NUMBER 7 PAGE 1

In the center of the second story of the facade is a small portico covered by a shed-roof-like extension of the center hipped roof. Turned bracketed posts and square balluster-like posts under the cornice are featured on this small portico. A railing with square vertical and horizontal posts runs around the portico.

The dominant feature of the south elevation is a two story projection. A brick chimney with geometric designs runs up the center of the projection. The gable end is covered in waffle-patterned stick work. Double-hung single-light shuttered windows flank either side of the chimney on both first and second story levels. The east end of the south elevation is covered in clapboard siding and features a two-over-two-light double-hung shuttered window at both first and second story levels. Three small double-hung windows are found irregularly spaced on this section of the house. Two four-light windows with arched wooden heads are found at the basement level.

The east elevation features a two-story portico with a basement. The original lattice remains around the first floor portico while a portion of the second story portico has been enclosed.

The south elevation of the Ragland House is dominated by a two-story gable bay. Waffle-patterned stick work covers the gable end. A pair of double-hung windows is found at the second story level. The first floor of the bay is three sided featuring a double-hung shuttered window on each side.

The irregular-shaped Ragland House contains eleven rooms. Most of the original features of the house remain intact such as the brass door hinges. All windows have metal bases and screens fixed to go inside. The house is heated by radiator but contains seven intact fireplaces. A wine cellar in the basement features a safe door with a patent date of 1921. At one time the house contained an elevator.

Although complex in exterior shape, the Ragland House is basically a central hall plan. The original hardwood woodwork is found throughout the house in mantels, floors, doors, wainscoting, baseboards and window and door trim. All seven fireplace mantels are unique in design. The mantel in the south parlor is of decoratively designed birds-eye maple. The doors feature an unusual design in their panelling. An open well two-run stairway rises to the second floor from the central hall.

UNITED STATES DEPARTMENT OF THE INTERIOR
NATIONAL PARK SERVICE

NATIONAL REGISTER OF HISTORIC PLACES
INVENTORY -- NOMINATION FORM

FOR NPS USE ONLY

RECEIVED

DATE ENTERED

CONTINUATION SHEET

ITEM NUMBER 7 PAGE 2

The stairway features an ornamental newel post and turned ballusters. Several of the original light fixtures wired for gas and electricity are found in the house.

The Ragland House remains in much its original condition. The only alterations of which the present owner is aware are the enclosure of a butler's pantry and the enclosure of part of the second story portico on the east elevation.

The Ragland House rests in good condition on its original site. Designed by Arkansas' leading architect at the time of its construction in 1891-92, the Ragland House is an excellent example of Victorian architecture.

8 SIGNIFICANCE

F D		AREAS OF SIGNIFICANCE -- CHECK AND JUSTIFY BELOW			
—	HISTORIC	— ARCHEOLOGY-PREHISTORIC	— COMMUNITY PLANNING	— LANDSCAPE ARCHITECTURE	— RELIGION
— 1400-1499	— ARCHEOLOGY-HISTORIC	— CONSERVATION	— LAW	— SCIENCE	
— 1500-1599	— AGRICULTURE	— ECONOMICS	— LITERATURE	— SCULPTURE	
— 1600-1699	X ARCHITECTURE	— EDUCATION	— MILITARY	— SOCIAL/HUMANITARIAN	
— 1700-1799	— ART	— ENGINEERING	— MUSIC	— THEATER	
X 1800-1899	X COMMERCE	— EXPLORATION/SETTLEMENT	— PHILOSOPHY	— TRANSPORTATION	
— 1900-	— COMMUNICATIONS	— INDUSTRY	— POLITICS/GOVERNMENT	— OTHER (SPECIFY)	
		— INVENTION			

SPECIFIC DATES 1891-92 BUILDER/ARCHITECT Charles L. Thompson

STATEMENT OF SIGNIFICANCE

The Ragland House, located at 1617 Center in Little Rock's historic Quapaw Quarter District is an excellent example of eclectic Victorian architecture. Possessing elements of modified Queen Anne architecture in it's usage of a tower, textural variety, irregular shape and multiple gables and bays, the house is an architecturally significant structure in the city. Charles L. Thompson, noted Arkansas architect, was responsible for the design of the house. The majority of Thompson's structures were designed around the turn of the centruy and are basically classical in style. Thus the Ragland House is unusual in that it is one of his earlier designs and of modified Queen Anne architecture. In addition to its architectural merit, the Ragland House is significant in its association with the Urganhart family in whose hands the house remained from the time of its construction in 1891-92 until 1958.

The Ragland House was constructed for Margaret Urganhart Ragland and her husband, William H. Ragland. W. H. Ragland was a banker and stockbroker. A respected citizen of Little Rock, Ragland was appointed in 1891 to the Little Rock Democratic Executive Committee. Mr. and Mrs. Ragland moved to Alabama and in 1898, sold their house to Mrs. Ragland's parents, Edmond and Henrietta Urganhart.

Edmond Urganhart was born in Fort Henry, Ontario on April 5, 1834. His father Edward Urganhart was an officer in the British Army with the rank of quartermaster-general. Both Edward Urganhart and his wife, Elizabeth were natives of Wales. Edward Urganhart died in 1846. At the age of twelve, Edmond Urganhart was apprenticed to a forwarding and shipping firm in Hamilton, Ontario. He completed his apprenticeship six years later. At eighteen, Urganhart's early start in business proved advantageous in securing a job with the Great Western Railroad Company with whom he worked for three years. At the completion of his employment with the railroad, Urganhart established a shipping house in St. Catherine in Canada under the name of Urganhart and Bowen. There he built several vessels to engage in the booming Great Lakes grain trade. This business venture was so profitable that he moved to St. Louis, Missouri in 1861 where he worked with a distillery. He later moved to Memphis. At the end of the Civil War, Urganhart entered the hardware business and began the manufacture of cotton

UNITED STATES DEPARTMENT OF THE INTERIOR
NATIONAL PARK SERVICE

NATIONAL REGISTER OF HISTORIC PLACES
INVENTORY -- NOMINATION FORM

FOR NPS USE ONLY

RECEIVED

DATE ENTERED

CONTINUATION SHEET

ITEM NUMBER 8 PAGE 2

seed oil. He utilized an old government building in the Memphis Navy Yard and equipped it with special machinery for crushing and extracting oil from cotton seed. While in residence in Memphis, Urguhart helped found the Fourth National Bank and Home Insurance Company.

In 1876 Urguhart established a cotton seed oil mill in Little Rock on East Second Street. He became president of this company which was established under the name of the Little Rock Oil Company. This was among the pioneer cotton seed oil concerns in Arkansas. By 1880 he had established a total of eight mills, all of which he was president and by 1895 he was president of twelve oil seed companies, representing a capital of more than \$2 million.

All of Urguhart's companies and a few other cotton seed oil companies merged to form the American Cotton Oil Trust, the main office being in Little Rock with Urguhart subsequently becoming president. To manage the immensely expanded business, Urguhart moved to New York City where he stayed until he retired and moved back to Little Rock in 1903.

Besides his business success in the cotton seed oil business, Urguhart was Director of the First National Bank of Little Rock and was president and founder of the Ladies Building and Loan Association. Urguhart also owned several plantations along the Arkansas River. He also established the Varner Branch Railroad which connected his plantation and mills with the main railroads.

Edmond Urguhart and his wife, Henrietta, who he married in 1864, had three daughters, one of whom died in infancy. Built for one daughter, Mrs. W. H. Ragland, the house was sold in 1898 to Edmond and Henrietta Urguhart. Upon Urguhart's death in 1905, his second daughter and her husband, Mr. and Mrs. William H. Miller, moved into the house with Henrietta Urguhart. Mrs. Urguhart lived in the house until her death in 1932. Mr. Miller died shortly thereafter but Mrs. Miller lived in the house until her death in 1958. The house then went to a daughter of Mrs. Ragland from which point the house had three owners before the present owners purchased the house in 1975.

Architecturally, the Ragland House is one of the most important Victorian structures in Little Rock. The house also represents the family of a nationally prominent businessman. The Ragland House is a surviving structure of a gilded period of history in which architectural ornateness

UNITED STATES DEPARTMENT OF THE INTERIOR
NATIONAL PARK SERVICE

NATIONAL REGISTER OF HISTORIC PLACES
INVENTORY -- NOMINATION FORM

FOR NPS USE ONLY

RECEIVED

DATE ENTERED

CONTINUATION SHEET

ITEM NUMBER 8

PAGE 3

abounded and it was possible to achieve immense business success through diligence, honesty and intelligence.

9 MAJOR BIBLIOGRAPHICAL REFERENCES

Arkansas Gazette, February 19, 1891.

Arkansas Gazette, December 2, 1905.

Arkansas Gazette, May 30, 1938.

Hamilton, Wanda, Personal interviews at the Ragland House, Little Rock, Arkansas, April 22 and November 1, 1976.

Quapaw Quarter Association. Ragland House File.

Thomas, David Y., Ed. Arkansas and Its People. New York: The American

10 GEOGRAPHICAL DATA

ACREAGE OF NOMINATED PROPERTY less than one acre.

UTM REFERENCES

A 15 566360 3843480
ZONE EASTING NORTHING

B
ZONE EASTING NORTHING

C

D

VERBAL BOUNDARY DESCRIPTION

LIST ALL STATES AND COUNTIES FOR PROPERTIES OVERLAPPING STATE OR COUNTY BOUNDARIES

STATE	CODE	COUNTY	CODE
-------	------	--------	------

STATE	CODE	COUNTY	CODE
-------	------	--------	------

11 FORM PREPARED BY

NAME / TITLE

Sandra Taylor, Historian

ORGANIZATION

Arkansas Historic Preservation Program

DATE

12-14-76

STREET & NUMBER

Suite 500, Continental Building, Main & Markham

TELEPHONE

371-2763

CITY OR TOWN

Little Rock,

STATE

Arkansas

12 STATE HISTORIC PRESERVATION OFFICER CERTIFICATION

THE EVALUATED SIGNIFICANCE OF THIS PROPERTY WITHIN THE STATE IS:

NATIONAL

STATE

LOCAL

As the designated State Historic Preservation Officer for the National Historic Preservation Act of 1966 (Public Law 89-665), I hereby nominate this property for inclusion in the National Register and certify that it has been evaluated according to the criteria and procedures set forth by the National Park Service.

STATE HISTORIC PRESERVATION OFFICER SIGNATURE Anne Bartley

TITLE

State Historic Preservation Officer

DATE

12-14-76

FOR NPS USE ONLY

I HEREBY CERTIFY THAT THIS PROPERTY IS INCLUDED IN THE NATIONAL REGISTER

DATE

DIRECTOR, OFFICE OF ARCHEOLOGY AND HISTORIC PRESERVATION
ATTEST:

DATE

KEEPER OF THE NATIONAL REGISTER



United States Department of the Interior

NATIONAL PARK SERVICE
1849 C Street, N.W.
Washington, D.C. 20240

The attached property, Ragland House, in Pulaski County, Arkansas, reference number 77000271, was listed in the National Register of Historic Places by the Keeper of the National Register on 06/17/1977, as evidenced by the FEDERAL REGISTER/WEEKLY LIST notice of Tuesday, February 7, 1978, Part II, Vol. 43, No. 26, page 5171. The attached nomination form is a copy of the original documentation provided to the Keeper at the time of listing.


Keeper of the National Register of Historic Places

9/12/2008
Date

Missing Core Documentation

Property Name

Ragland House

County, State

Pulaski, Arkansas

Reference Number

77000271

The following Core Documentation is missing from this entry:

☒ Nomination Form (Photocopy from SHPO Present)

☐ Photographs

☐ USGS Map



1. RAGLAND HOUSE
PULASKI COUNTY, ARKANSAS
FACADE, VIEWED FROM THE SOUTHWEST
DOE 6-17-77

199

Form No. 10-301a
(Rev. 10-74)

UNITED STATES DEPARTMENT OF THE INTERIOR
NATIONAL PARK SERVICE

NATIONAL REGISTER OF HISTORIC PLACES
PROPERTY PHOTOGRAPH FORM

FOR NPS USE ONLY

RECEIVED

FEB 4 1977

DATE ENTERED

JUN 17 1977

SEE INSTRUCTIONS IN HOW TO COMPLETE NATIONAL REGISTER FORMS
TYPE ALL ENTRIES -- ENCLOSE WITH PHOTOGRAPH

1 NAME

HISTORIC

Ragland House

AND/OR COMMON

2 LOCATION

CITY, TOWN

Little Rock

____ VICINITY OF

COUNTY

Pulaski

STATE

Arkansas

3 PHOTO REFERENCE

PHOTO CREDIT Bob Dunn

DATE OF PHOTO November, 1976

NEGATIVE FILED AT Arkansas Historic Preservation Program

4 IDENTIFICATION

DESCRIBE VIEW, DIRECTION, ETC. IF DISTRICT, GIVE BUILDING NAME & STREET

Facade, viewed from the southwest

PHOTO NO.

1



2. RAGLAND HOUSE
PULASKI COUNTY, ARKANSAS
GABLED BAY ON FACADE, VIEWED FROM THE NORTHWEST
D.O.P. 6-17-77

Form No. 10-301a
(Rev. 10-74)

UNITED STATES DEPARTMENT OF THE INTERIOR
NATIONAL PARK SERVICE

NATIONAL REGISTER OF HISTORIC PLACES
PROPERTY PHOTOGRAPH FORM

FOR NPS USE ONLY

RECEIVED FEB 4 1977

JUN 17 1977

DATE ENTERED

SEE INSTRUCTIONS IN *HOW TO COMPLETE NATIONAL REGISTER FORMS*
TYPE ALL ENTRIES -- ENCLOSE WITH PHOTOGRAPH

1 NAME

HISTORIC

Ragland House

AND/OR COMMON

2 LOCATION

CITY, TOWN

Little Rock

____ VICINITY OF

COUNTY

Pulaski

STATE

Arkansas

3 PHOTO REFERENCE

PHOTO CREDIT Bob Dunn

DATE OF PHOTO November, 1976

NEGATIVE FILED AT Arkansas Historic Preservation Program

4 IDENTIFICATION

DESCRIBE VIEW, DIRECTION, ETC. IF DISTRICT, GIVE BUILDING NAME & STREET

Gabled bay on facade, viewed from the northwest

PHOTO NO.

2 of 9

INT: 2983-75

PROPERTY OF THE NATIONAL REGISTER



2. RAGLAND HOUSE
PULASKI COUNTY, ARKANSAS
SOUTH ELEVATION, VIEWED FROM THE SOUTH
D.O.C. 6-17-77

Form No. 10-301a
(Rev. 10-74)

UNITED STATES DEPARTMENT OF THE INTERIOR
NATIONAL PARK SERVICE

**NATIONAL REGISTER OF HISTORIC PLACES
PROPERTY PHOTOGRAPH FORM**

FOR NPS USE ONLY

RECEIVED FEB 4 1977

DATE ENTERED JUN 17 1977

SEE INSTRUCTIONS IN *HOW TO COMPLETE NATIONAL REGISTER FORMS*
TYPE ALL ENTRIES -- ENCLOSE WITH PHOTOGRAPH

1 NAME

HISTORIC

Ragland House

AND/OR COMMON

2 LOCATION

CITY, TOWN

Little Rock

____ VICINITY OF

COUNTY

Pulaski

STATE

Arkansas

3 PHOTO REFERENCE

PHOTO CREDIT Bob Dunn

DATE OF PHOTO November, 1976

NEGATIVE FILED AT Arkansas Historic Preservation Program

4 IDENTIFICATION

DESCRIBE VIEW, DIRECTION, ETC. IF DISTRICT, GIVE BUILDING NAME & STREET

South elevation, viewed from the south

PHOTO NO.

3069

INT: 2983-75

DEPARTMENT OF THE INTERIOR
NATIONAL REGISTER



4. RAGLAND HOUSE
PULASKI COUNTY, ARKANSAS
Gabled bay on north elevation, viewed from the northwest
D.O.C. 6-17-77
4 of 9

Form No. 10-301a
(Rev. 10-74)

UNITED STATES DEPARTMENT OF THE INTERIOR
NATIONAL PARK SERVICE

**NATIONAL REGISTER OF HISTORIC PLACES
PROPERTY PHOTOGRAPH FORM**

FOR NPS USE ONLY

RECEIVED

FEB 4 1977

DATE ENTERED JUN 17 1977

SEE INSTRUCTIONS IN *HOW TO COMPLETE NATIONAL REGISTER FORMS*
TYPE ALL ENTRIES -- ENCLOSE WITH PHOTOGRAPH

1 NAME

HISTORIC

Ragland House

AND/OR COMMON

2 LOCATION

CITY, TOWN

Little Rock

____ VICINITY OF

COUNTY

Pulaski

STATE

Arkansas

3 PHOTO REFERENCE

PHOTO CREDIT Bob Dunn

DATE OF PHOTO November, 1976

NEGATIVE FILED AT Arkansas Historic Preservation Program

4 IDENTIFICATION

DESCRIBE VIEW, DIRECTION, ETC. IF DISTRICT. GIVE BUILDING NAME & STREET

Gabled bay on north elevation, viewed from the northwest

PHOTO NO.

4

INT: 2983-75

PROPERTY OF THE NATIONAL REGISTER



5. RAGLAND HOUSE
PULASKI COUNTY, ARKANSAS
EAST ELEVATION, VIEWED FROM THE SOUTHEAST

D.O.C. 6-17-77

5 of 9

Form No. 10-301a
(Rev. 10-74)

UNITED STATES DEPARTMENT OF THE INTERIOR
NATIONAL PARK SERVICE

**NATIONAL REGISTER OF HISTORIC PLACES
PROPERTY PHOTOGRAPH FORM**

FOR NPS USE ONLY

RECEIVED FEB 4 1977

DATE ENTERED JUN 17 1977

SEE INSTRUCTIONS IN *HOW TO COMPLETE NATIONAL REGISTER FORMS*
TYPE ALL ENTRIES -- ENCLOSE WITH PHOTOGRAPH

1 NAME

HISTORIC

Ragland House

AND/OR COMMON

2 LOCATION

CITY, TOWN

Little Rock

____ VICINITY OF

COUNTY

Pulaski

STATE

Arkansas

3 PHOTO REFERENCE

PHOTO CREDIT Bob Dunn

DATE OF PHOTO November, 1976

NEGATIVE FILED AT Arkansas Historic Preservation Program

4 IDENTIFICATION

DESCRIBE VIEW, DIRECTION, ETC. IF DISTRICT, GIVE BUILDING NAME & STREET

East elevation, viewed from the southeast

PHOTO NO.

5 of 9

INT: 2983-75

PROPERTY OF THE NATIONAL REGISTER



6. RAGLAND HOUSE
PULASKI COUNTY, ARKANSAS
interior of curved window in bay
D.O.E. 6-17-77

Form No. 10-301a
(Rev. 10-74)

UNITED STATES DEPARTMENT OF THE INTERIOR
NATIONAL PARK SERVICE

**NATIONAL REGISTER OF HISTORIC PLACES
PROPERTY PHOTOGRAPH FORM**

FOR NPS USE ONLY

RECEIVED

FEB 4 1977

DATE ENTERED

JUN 17 1977

SEE INSTRUCTIONS IN *HOW TO COMPLETE NATIONAL REGISTER FORMS*
TYPE ALL ENTRIES -- ENCLOSE WITH PHOTOGRAPH

1 NAME

HISTORIC

Ragland House

AND/OR COMMON

2 LOCATION

CITY, TOWN

Little Rock

____ VICINITY OF

COUNTY

Pulaski

STATE

Arkansas

3 PHOTO REFERENCE

PHOTO CREDIT

Bob Dunn

DATE OF PHOTO November, 1976

NEGATIVE FILED AT

Arkansas Historic Preservation Program

4 IDENTIFICATION

DESCRIBE VIEW, DIRECTION, ETC. IF DISTRICT, GIVE BUILDING NAME & STREET

Interior of curved window in bay.

PHOTO NO.

6

INT: 2983-75

OFFICE OF THE NATIONAL REGISTER



7. RAGLAND HOUSE
Pulaski County, ARKANSAS
UNUSUAL PANEL DESIGN IN DOORS
D.O.E. 6-17-77
7 of 9

Form No. 10-301a
(Rev. 10-74)

UNITED STATES DEPARTMENT OF THE INTERIOR
NATIONAL PARK SERVICE

**NATIONAL REGISTER OF HISTORIC PLACES
PROPERTY PHOTOGRAPH FORM**

FOR NPS USE ONLY

RECEIVED FEB 4 1977

DATE ENTERED JUN 17 1977

SEE INSTRUCTIONS IN *HOW TO COMPLETE NATIONAL REGISTER FORMS*
TYPE ALL ENTRIES -- ENCLOSE WITH PHOTOGRAPH

1 NAME

HISTORIC

Ragland House

AND/OR COMMON

2 LOCATION

CITY, TOWN

Little Rock

____ VICINITY OF

COUNTY

Pulaski

STATE

Arkansas

3 PHOTO REFERENCE

PHOTO CREDIT Bob Dunn

DATE OF PHOTO November, 1976

NEGATIVE FILED AT Arkansas Historic Preservation Program

4 IDENTIFICATION

DESCRIBE VIEW, DIRECTION, ETC. IF DISTRICT, GIVE BUILDING NAME & STREET

Unusual panel design in doors.

PHOTO NO.

789

INT: 2983-75

PROPERTY OF THE NATIONAL REGISTER



8. RAGLAND HOUSE
PULASKI COUNTY, ARKANSAS
STAIRWAY IN CENTRAL HALL
D.O.E. 6-17-77
8 of 9

Form No. 10-301a
(Rev. 10-74)

UNITED STATES DEPARTMENT OF THE INTERIOR
NATIONAL PARK SERVICE

**NATIONAL REGISTER OF HISTORIC PLACES
PROPERTY PHOTOGRAPH FORM**

FOR NPS USE ONLY

RECEIVED FEB 4 1977

JUN 17 1977

DATE ENTERED

SEE INSTRUCTIONS IN *HOW TO COMPLETE NATIONAL REGISTER FORMS*
TYPE ALL ENTRIES -- ENCLOSE WITH PHOTOGRAPH

1 NAME

HISTORIC

Ragland House

AND/OR COMMON

2 LOCATION

CITY, TOWN

Little Rock

— VICINITY OF

COUNTY

Pulaski

STATE

Arkansas

3 PHOTO REFERENCE

PHOTO CREDIT

Bob Dunn

DATE OF PHOTO November, 1976

NEGATIVE FILED AT

Arkansas Historic Preservation Program

4 IDENTIFICATION

DESCRIBE VIEW, DIRECTION, ETC. IF DISTRICT, GIVE BUILDING NAME & STREET

Stairway in central hall.

PHOTO NO.

8

INT: 2983-75

PROPERTY OF THE NATIONAL REGISTER



9. RAGLAND HOUSE
PULASKI COUNTY, ARKANSAS
BIRD'S-EYE MAPLE MANTEL
D.O.E. 6-17-77

9 of 9

Form No. 10-301a
(Rev. 10-74)

UNITED STATES DEPARTMENT OF THE INTERIOR
NATIONAL PARK SERVICE

NATIONAL REGISTER OF HISTORIC PLACES
PROPERTY PHOTOGRAPH FORM

FOR NPS USE ONLY

RECEIVED FEB 4 1977

DATE ENTERED JUN 17 1977

SEE INSTRUCTIONS IN HOW TO COMPLETE NATIONAL REGISTER FORMS
TYPE ALL ENTRIES -- ENCLOSE WITH PHOTOGRAPH

1 NAME

HISTORIC

Ragland House

AND/OR COMMON

2 LOCATION

CITY, TOWN

Little Rock

____ VICINITY OF

COUNTY

Pulaski

STATE

Arkansas

3 PHOTO REFERENCE

PHOTO CREDIT Bob Dunn

DATE OF PHOTO November, 1976

NEGATIVE FILED AT Arkansas Historic Preservation Program

4 IDENTIFICATION

DESCRIBE VIEW, DIRECTION, ETC. IF DISTRICT, GIVE BUILDING NAME & STREET

Bird's-Eye maple mantel.

PHOTO NO.

9

UNITED STATES DEPARTMENT OF THE INTERIOR
NATIONAL PARK SERVICE

**NATIONAL REGISTER OF HISTORIC PLACES
PROPERTY MAP FORM**

FOR NPS USE ONLY

RECEIVED FEB 4 1977
JUN 17 1977

DATE ENTERED

SEE INSTRUCTIONS IN *HOW TO COMPLETE NATIONAL REGISTER FORMS*
TYPE ALL ENTRIES -- ENCLOSE WITH MAP

1 NAME

HISTORIC

Ragland House

AND/OR COMMON

2 LOCATION

CITY, TOWN

____ VICINITY OF

COUNTY

STATE

Little Rock

Pulaski

Arkansas

3 MAP REFERENCE

SOURCE United States Geological Survey

SCALE 1:24,000

DATE 1961 (Photo revised 1970)

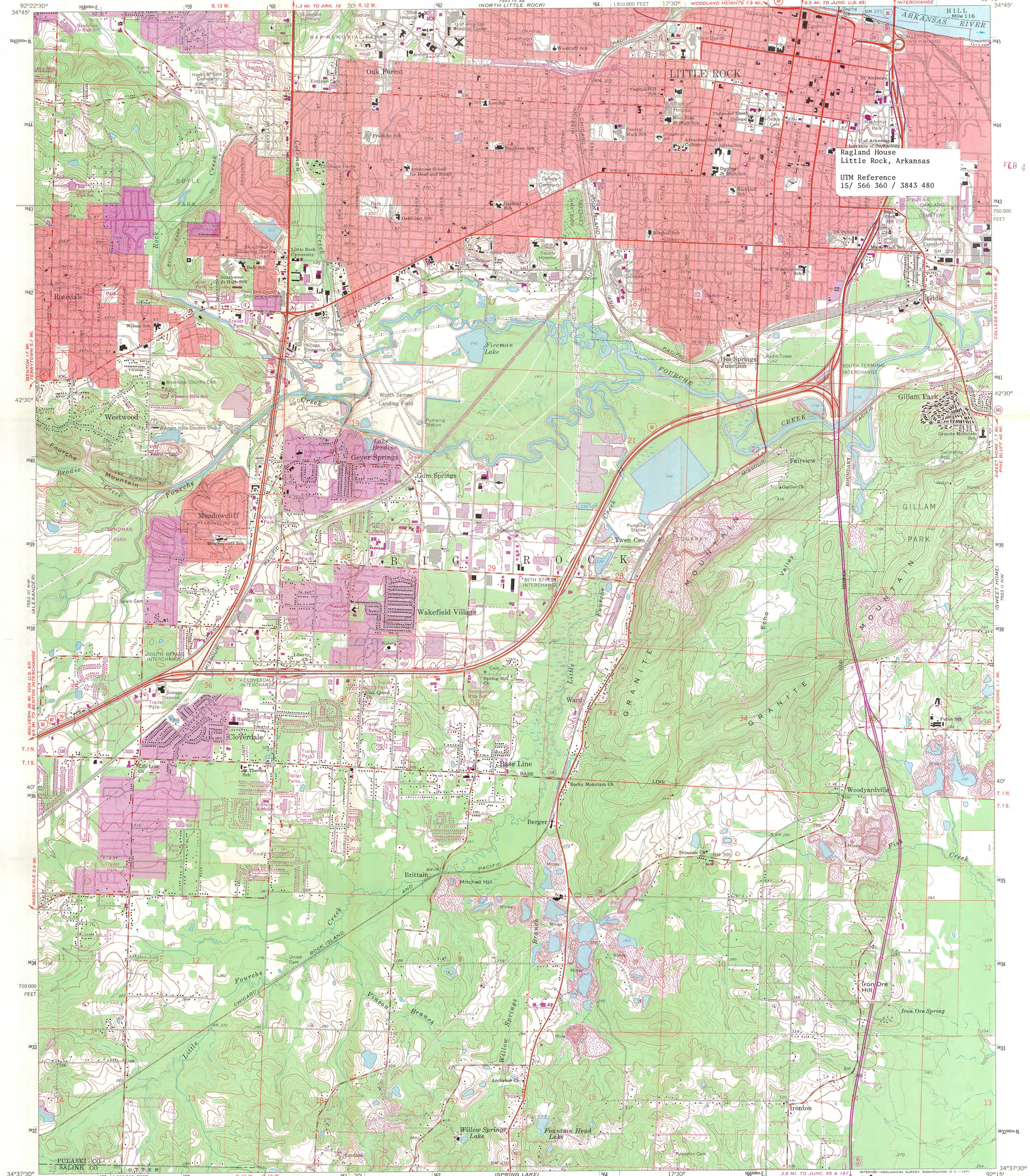
4 REQUIREMENTS

TO BE INCLUDED ON ALL MAPS

1. PROPERTY BOUNDARIES
2. NORTH ARROW
3. UTM REFERENCES

FEB 4 1977

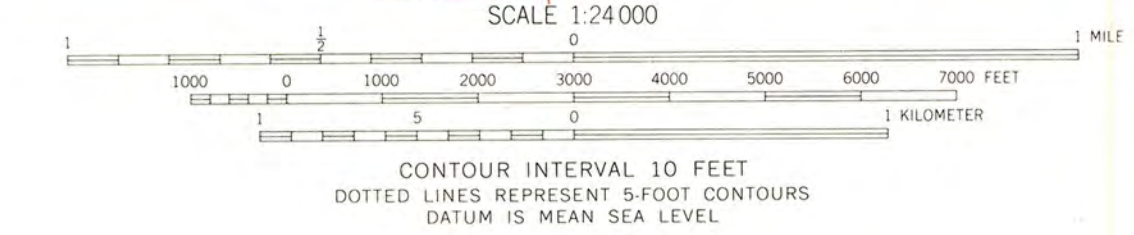
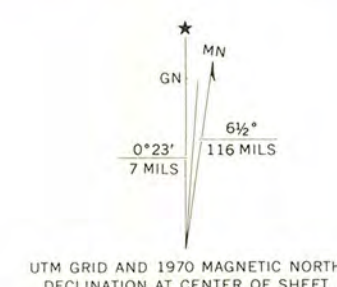
7553 I NW
PINE BLUFF 40 MI



Ragland House
Little Rock, Arkansas
UTM Reference
15/ 566 360 / 3843 480

FEB 4 1977

Maped, edited, and published by the Geological Survey
Control by USGS and USC&GS
Topography by photogrammetric methods from aerial
photographs taken 1960. Field checked 1961
Polyconic projection. 1927 North American datum
10,000-foot grid based on Arkansas coordinate system, south zone
1000-meter Universal Transverse Mercator grid ticks,
zone 15, shown in blue
Red tint indicates areas in which only landmark buildings are shown
Fine red dashed lines indicate selected fence and field lines where
generally visible on aerial photographs. This information is unchecked
Revisions shown in purple compiled from aerial photographs
taken 1970. This information not field checked
Purple tint indicates extension of urban areas



THIS MAP COMPLIES WITH NATIONAL MAP ACCURACY STANDARDS.
FOR SALE BY U.S. GEOLOGICAL SURVEY, DENVER, COLORADO 80225, OR WASHINGTON, D. C. 20242
AND BY THE ARKANSAS GEOLOGICAL COMMISSION, LITTLE ROCK, ARKANSAS 72201
A FOLDER DESCRIBING TOPOGRAPHIC MAPS AND SYMBOLS IS AVAILABLE ON REQUEST

ROAD CLASSIFICATION
Heavy-duty ——— Light-duty ———
Medium-duty ——— Unimproved dirt ———
Interstate Route ——— U.S. Route ——— State Route ———

RECEIVED
FEB 4 1977
NATIONAL
REGISTER

LITTLE ROCK, ARK.
NE/4 ALEXANDER 15' QUADRANGLE
N 3437.5 — W 9215/7.5
1961
PHOTOREVISED 1970
AMS 7553 III NE—SERIES Y884