



United States Department of the Interior
National Park Service

National Register of Historic Places Registration Form

NATIONAL
REGISTER

This form is for use in nominating or requesting determinations of eligibility for individual properties or districts. See instructions in *Guidelines for Completing National Register Forms* (National Register Bulletin 16). Complete each item by marking "x" in the appropriate box or by entering the requested information. If an item does not apply to the property being documented, enter "N/A" for "not applicable." For functions, styles, materials, and areas of significance, enter only the categories and subcategories listed in the instructions. For additional space use continuation sheets (Form 10-900a). Type all entries.

1. Name of Property

historic name Moore Potato House

other names/site number CRS#-6664

2. Location

street & number Road 72, Box 337

not for publication

city, town Laurel

vicinity

state Delaware

code DE

county Sussex

code 005

zip code 19956

3. Classification

Ownership of Property

private

public-local

public-State

public-Federal

Category of Property

building(s)

district

site

structure

object

Number of Resources within Property

Contributing

1

Noncontributing

N/A buildings

_____ sites

_____ structures

_____ objects

1

NA Total

Name of related multiple property listing:

Sweet Potato Houses of Sussex County, Delaware

Number of contributing resources previously

listed in the National Register 0

4. State/Federal Agency Certification

As the designated authority under the National Historic Preservation Act of 1966, as amended, I hereby certify that this nomination request for determination of eligibility meets the documentation standards for registering properties in the National Register of Historic Places and meets the procedural and professional requirements set forth in 36 CFR Part 60. In my opinion, the property meets does not meet the National Register criteria. See continuation sheet.

Signature of certifying official

Division of Historical and Cultural Affairs

State or Federal agency and bureau

- 3480

Date

9/25/90

In my opinion, the property meets does not meet the National Register criteria. See continuation sheet.

Signature of commenting or other official

State or Federal agency and bureau

INA

Date

5. National Park Service Certification

I, hereby, certify that this property is:

entered in the National Register.

See continuation sheet.

determined eligible for the National Register. See continuation sheet.

determined not eligible for the National Register.

removed from the National Register.

other, (explain:)

Alanna Byers 11/15/90

fu Signature of the Keeper

Date of Action

6. Function or Use

Historic Functions (enter categories from instructions)

Agriculture/processing, storage

Current Functions (enter categories from instructions)

Agriculture/storage

7. Description

Architectural Classification
(enter categories from instructions)Other: Potato House

Materials (enter categories from instructions)

foundation brick & concrete block
walls wood/weatherboard

roof tin/wood shingles in situother N/A

Describe present and historic physical appearance.

The Moore Potato House is a one and one half story, gable fronted, balloon frame structure built circa 1920. It is located south/southeast of intersection of Roads 72 and 463 lying on the south side of Road 72. It belongs to a farm complex which not being considered for nomination and measures 16 feet 6 inches by 20 feet 4 inches. The surrounding environment consists of a farm courtyard with extensive outbuildings including a chicken house, barn, three sheds, hen house, ice house, privy, and corn crib. The potato house is located on the southeast side of the farmyard complex and stands partly within a small woods. The complex is surrounded by open fields both cultivated and uncultivated and lies on a medium duty county road. During the heyday of the sweet potato this farm produced Indian corn and produce vegetables such as peas cucumbers, and tomatoes as well as sweet potatoes.

The Moore Potato House is triple sheathed having weatherboards over diagonal boards, over interior planking (wall covering). The fenestration of both front and back is original and reflects the design standard of the majority of gable fronted potato houses. A central first floor door capped by a second floor window, capped in turn by a small ventilation window in the gable comprises the front gable fenestration. The rear gable fenestration is identical. A single window pierces the left side wall presumably for additional ventilation. The present roof is tin over original wood shingles.

The interior has been thoroughly converted to storage space. There is no evidence of stove, chimney, or storage bins. There is the distinguishing gap between walls and ceilings which allowed warm air unimpeded passage to potatoes on the upper floor. The floors are slated, likewise enhancing air circulation.

The building is in fair condition. The exterior is still largely preserved and it is structurally sound. However, neglect is evident.

 See continuation sheet

8. Statement of Significance

Certifying official has considered the significance of this property in relation to other properties:

nationally statewide locally

Applicable National Register Criteria A B C D

Criteria Considerations (Exceptions) A B C D E F G

Areas of Significance (enter categories from instructions)

Agriculture
Architecture

Period of Significance

1920-1937

Significant Dates

N/A

Cultural Affiliation

N/A

Significant Person

N/A

Architect/Builder

~~N/A~~ unknown

State significance of property, and justify criteria, criteria considerations, and areas and periods of significance noted above.

The Moore Potato House is eligible for nomination to the National Register of Historic Places as an example of an architectural reflection of a broad historical trend and as a significant architectural type. The potato house, as a functional type, relates to the Delaware Comprehensive Historic Preservation Plan's study unit III under the 1880-1940 period and is an example of that plan's property type 1B reflecting major economic and cultural trends relating to agriculture.

The broad historical pattern to which the potato house is directly linked is the modernization of agricultural practices in southern Delaware during the first half of the twentieth century including the emergence of truck farming, the growth of perishable produce crops, and the development of modern agricultural marketing. The growth of sweet potato cultivation in southern Delaware was one of the major manifestations of these changes in production practices and crop choice. The potato house is the remaining physical evidence of this important trend in Sussex County's agricultural history when the sweet potato was "king".

Sweet potato cultivation dominated the region particularly in the years between 1910-1940 and was one of the first crops to benefit from truck farming and modern agricultural marketing. The long (eight month) and multi-phased process of sweet potato production impacted the culture and economy of the rural community in Sussex County during the years of its prominence as one of the area's cash crops.

The potato house is significant as an architectural type. It was essential to the process of sweet potato production in both curing and storage capacities

See continuation sheet

9. Major Bibliographical References

Delaware Agricultural Statistics, Historical Series 1866-1974, Bul. no. 419,
Newark: University of Delaware, Agricultural Experiment Station, 1976.

Hancock, Harold B. The History of Sussex County, Sussex County Bicentennial
Committee, 1976.

Herman, Bernard and Siders, Rebecca. The Delaware Comprehensive Historic Preservation
Plan, prepared for the Delaware State Office of Archaeology and Historic
Preservation, 1987.

Oral History Interviews with retired sweet potato farmers of Sussex County, August 1986.
Tapes with the Center for Historic Architecture and Engineering, University of Delaware.

Scharf, Thomas. History of Delaware, 1609-1888, Philadelphia: L. J. Richards & Co., 1888.

See continuation sheet

Previous documentation on file (NPS):

- preliminary determination of individual listing (36 CFR 67)
has been requested
- previously listed in the National Register
- previously determined eligible by the National Register
- designated a National Historic Landmark
- recorded by Historic American Buildings
Survey # _____
- recorded by Historic American Engineering
Record # _____

Primary location of additional data:

- State historic preservation office
- Other State agency
- Federal agency
- Local government
- University
- Other

Specify repository: _____

10. Geographical Data

Acreage of property .02 acres (422 square feet)

UTM References

A

| | |
|---|---|
| 1 | 8 |
|---|---|

| | | | | | |
|---|---|---|---|---|---|
| 4 | 5 | 6 | 3 | 8 | 8 |
|---|---|---|---|---|---|

| | | | | | | |
|---|---|---|---|---|---|---|
| 4 | 2 | 6 | 3 | 5 | 1 | 7 |
|---|---|---|---|---|---|---|

Zone Easting Northing

B

| | | | | | | |
|--|--|--|--|--|--|--|
| | | | | | | |
|--|--|--|--|--|--|--|

| | | | | | | |
|--|--|--|--|--|--|--|
| | | | | | | |
|--|--|--|--|--|--|--|

| | | | | | | |
|--|--|--|--|--|--|--|
| | | | | | | |
|--|--|--|--|--|--|--|

Zone Easting Northing

C

| | | | | | | |
|--|--|--|--|--|--|--|
| | | | | | | |
|--|--|--|--|--|--|--|

| | | | | | | |
|--|--|--|--|--|--|--|
| | | | | | | |
|--|--|--|--|--|--|--|

| | | | | | | |
|--|--|--|--|--|--|--|
| | | | | | | |
|--|--|--|--|--|--|--|

D

| | | | | | | |
|--|--|--|--|--|--|--|
| | | | | | | |
|--|--|--|--|--|--|--|

| | | | | | | |
|--|--|--|--|--|--|--|
| | | | | | | |
|--|--|--|--|--|--|--|

| | | | | | | |
|--|--|--|--|--|--|--|
| | | | | | | |
|--|--|--|--|--|--|--|

See continuation sheet

Tax Parcel Map #: 3-32-5, 7.3

Verbal Boundary Description

The boundary of the site is a rectangle surrounding the potato house and extending ten feet from the roof line of the building on all sides.

See continuation sheet

Boundary Justification

The boundary is justifiable because this nomination asks for the consideration of only the potato house. The property and additional non-contributing structures associated with the site are not included in this nomination.

See continuation sheet

11. Form Prepared By

name/title Judith Quinn
organization Center for Historic Architecture and Engineering date December 23, 1987
street & number Urban Affairs, University of Delaware telephone 302-451-2394
city or town Newark state Delaware zip code 19716

**United States Department of the Interior
National Park Service**

**National Register of Historic Places
Continuation Sheet**

Section number 8 Page 1

CRS#-6664

and was developed as a distinct building type to provide the functional needs required for a successful, saleable sweet potato crop. Potato houses share common construction elements and are recognizable on the landscape as belonging to this specific property type.

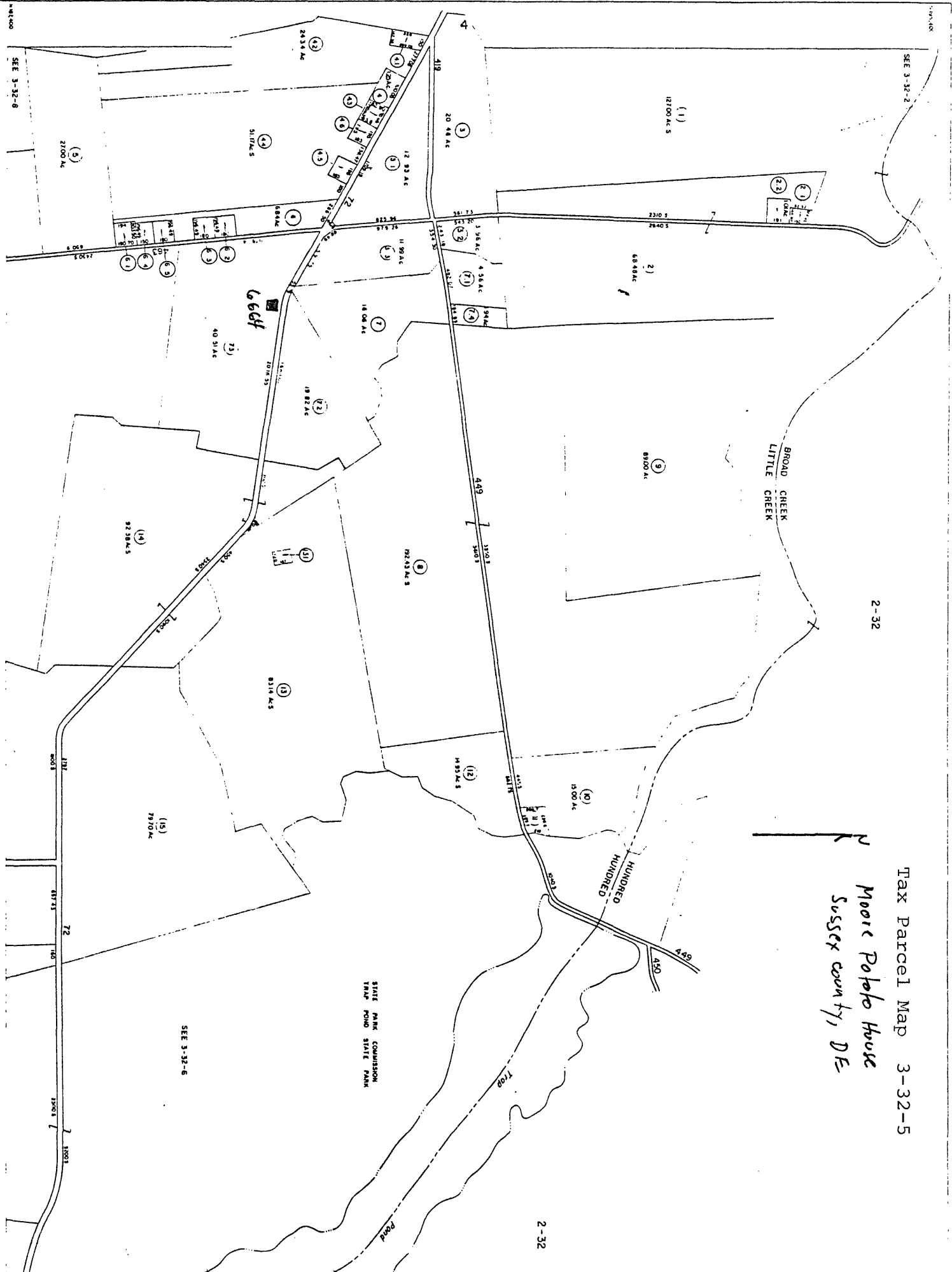
The significance of the Moore Potato House lies in its well preserved exterior and in commonly shared construction elements related to the function and design of sweet potato houses. These elements include; tall and narrow proportions, triple siding, minimal fenestration, tightly fitting window hatches, and interior ventilation features (especially the slated floor). The Moore Potato House has integrity of design, materials, workmanship, and association.

Tax Parcel Map 3-32-5

Moore Popolo House
Sussex county, DE

2-32

2-32



STATE PARK COMMISSION
TRAP POND STATE PARK

SEE 3-32-6

AERO SERVICE
Philadelphia, Pennsylvania 19135

DATE OF REVISION
OCTOBER 1972

Not responsible for errors
due to changes in laws
and regulations.

SUSSEX COUNTY
DELAWARE

LEGEND

| | |
|-----------------|--------------------------|
| County line | Map parcel number |
| Numbered line | Original lot number |
| Unnumbered line | Map to land distribution |