



CHAMPION MILL (NETHS#CH01-1)
CHAMPION, GADSDEN COUNTY, NEBRASKA

PHOTO BY TIM HAJEK, CHAMPION
MILL STATE HISTORICAL PARK, MARCH 1988.

VIEW LOOKING SOUTHWEST SHOWING
NORTH AND WEST FACADES OF MILL BLDG.

PHOTO # 1 OF 13

720



CHAMPION MILL (NEHBS #CH01-1)
CHAMPION, CHASE COUNTY, NEBRASKA

PHOTO BY TIM HAUCK, CHAMPION
MILL STATE HISTORICAL PARK. MARCH 1988.

VIEW LOOKING NORTHEAST SHOWING
SOUTH AND WEST FACADES OF MILL BLDG.

PHOTO # 2 OF 13

22



CHAMPION MILL (NETHS #CH01-1)

CHAMPION, CHASE COUNTY, NEBRASKA

PHOTO BY TIM HAJEK, CHAMPION
MILL STATE HISTORICAL PARK. MARCH 1988.

VIEW LOOKING NORTHWEST SHOWING
SOUTH AND EAST FACADES OF MILL BLDG.

PHOTO # 3 OF 13



Champion Mill (NHS #CH01-1)

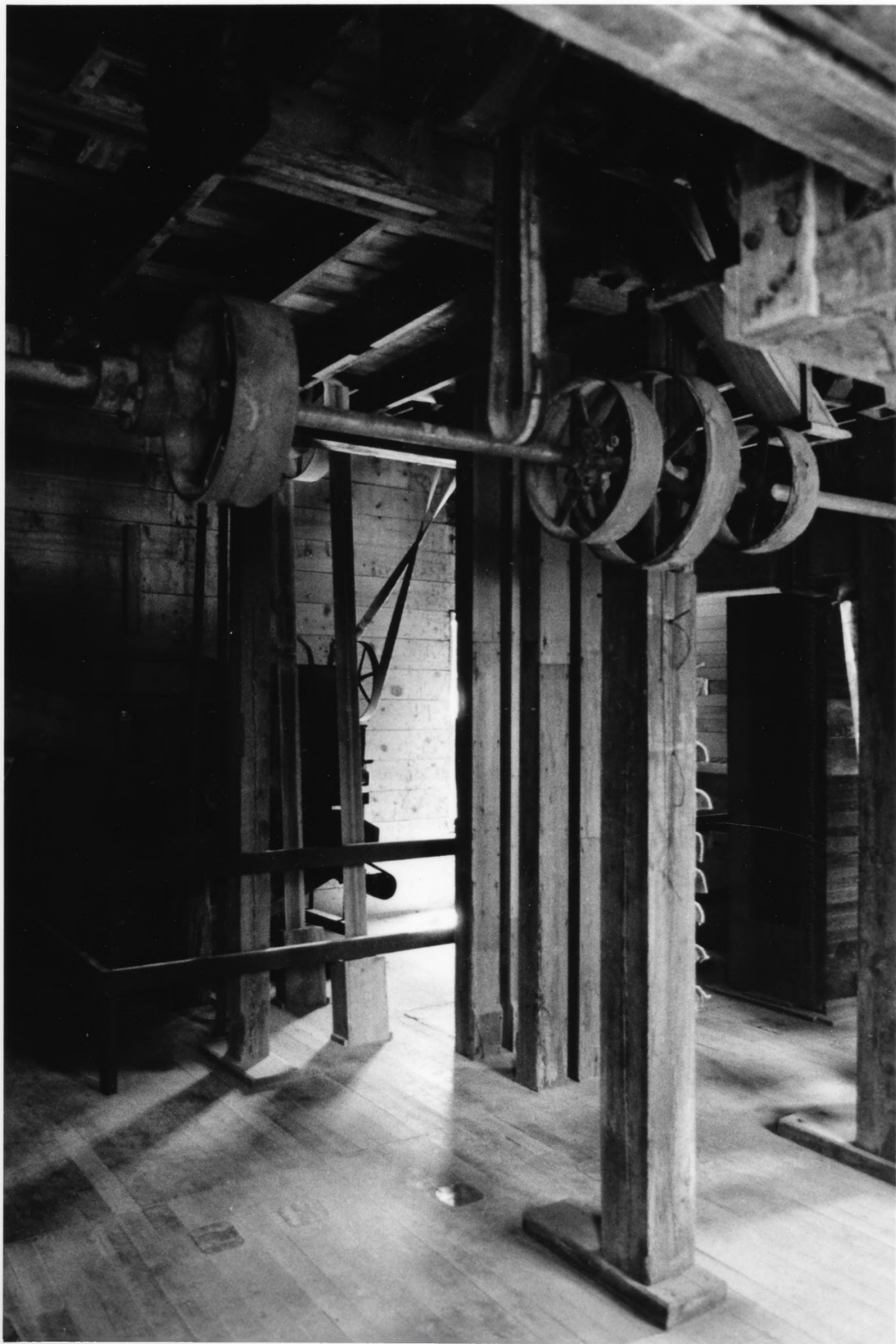
Champion, Chase County, Nebraska

Photo by D. Murphy, Nebraska State
Historical Society, July, 1977

(NHS 7707/20:1a)

View looking west showing
first floor main milling room
with roller and elevators.

Photo # 4 of 13



CHAMPION MILL (NET#BS #CHOI-1)

CHAMPION, CHASE COUNTY, NEBRASKA

PHOTO BY D. MURPHY, NE STATE
HISTORICAL SOCIETY, JULY, 1977
(NHSIS 7707/20:4a)

VIEW LOOKING SOUTHWEST SHOWING
SECOND FLOOR MAIN ROOM WITH
LINE SHEDDING (TOP) AND RECEIVING
SEPARATOR. (CENTER-LEFT)

PHOTO # 5 OF 13

7707/20:4a 1181-40 R803 822



CHAMPION MILL (NETHS # CH01-1)

CHAMPION, CHASE COUNTY, NEBRASKA

PHOTO BY D. MURPHY, NE. STATE
HISTORICAL SOCIETY, JULY, 1977
(NHS 7707/20:8a)

VIEW LOOKING EAST SHOWING THIRD
FLOOR MAIN ROOM (WEST HALF OF
MONITOR WITH NORTH ADDITION)

PHOTO # 6 OF 13

1781-52 RSD 3 SCL

7707/20:8a
8a



CHAMPION MILL (NETBS #CH01-1)

CHAMPION, CHASE COUNTY, NEBRASKA

PHOTO BY D. MUMFORD, NEBRASKA

STATE HISTORICAL SOCIETY, JULY, 1977

(NSHS 7707/19:16)

VIEW LOOKING SOUTHWEST SHOWING HEADRACE.

PHOTO # 7 OF 13

SEL

RBD1

LCB1-40

7707/19:16



CHAMPION MILL (NETHS# CH01-1)

CHAMPION, CHASE COUNTY, NEBRASKA

PHOTO BY D. MURPHY, NEBRASKA STATE
HISTORICAL SOCIETY, JULY, 1977
(NETHS 7707/19:23)

VIEW LOOKING WEST SHOWING HEADRACE.

PHOTO # 8 OF 13

sec

R8D1

11B1-60

7707/19:23



CHAMPION MILL (NETHS #CHOI-1)

CHAMPION, CHASE COUNTY, NEBRASKA

PHOTO BY D. MURPHY, NEBRASKA

STATE HISTORICAL SOCIETY, JULY, 1977

(NSHS 7707/19:2)

VIEW LOOKING SOUTHEAST SHOWING
NORTH AND WEST FACADES OF MILL BLDG.

PHOTO # 9 OF 13

RBDA SOL

1181-409

7707/19:2



CHAMPION MILL (NETHS # CH01-1)

CHAMPION, CHASE COUNTY, NEBRASKA

PHOTO BY D. MURPHY, NEBR. STATE
HISTORICAL SOCIETY, JULY, 1977

(NSTHS 7707/19:25)

VIEW LOOKING NORTHEAST SHOWING
SOUTH AND WEST FACADES OF MILL BLDG.

PHOTO # 10 OF 13

7707/19:25
12B1-65
RBD/ sec



Champion Mill (NeHS #CH01-1)

Champion, Chase County, Nebraska

PHOTO BY D. MURPHY, NEBRASKA STATE
HISTORICAL SOCIETY, JULY, 1977

(NHS 7707/19:29)

VIEW LOOKING NORTHWEST SHOWING
SOUTH AND EAST FACADES OF MILL BLDG.

PHOTO # 11 OF 13

SEC

R803

1181-35

7707/19:29

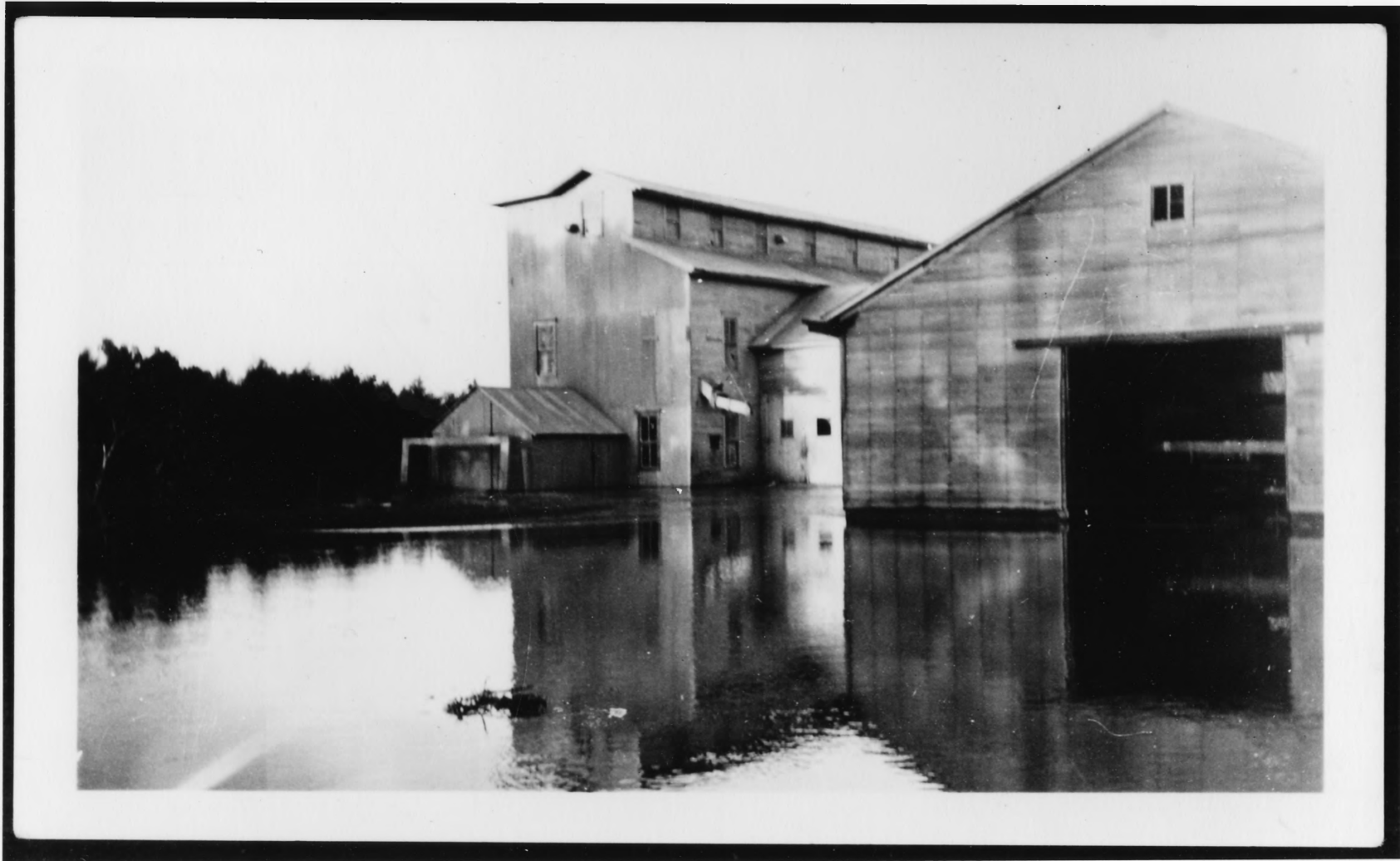


Champion Mill (NEHBS #CH01-1)
Champion, Chase County, Nebraska

Nebraska State Historical Society
Photo Collections, Historic View,
ca. 1930s-1940 (M657-131)

View looking south-southwest
showing north and east facades
of the mill block.

Photo # 12 of 13.



Champion Mill (NeHS#CH01-1)
Champion, Chase County, Nebraska

NEBRASKA STATE HISTORICAL SOCIETY
PHOTO COLLECTIONS. HISTORIC VIEW
1940. (M657-133)

VIEW LOOKING NORTHWEST SHOWING
SOUTH AND WEST FACADES OF
MILL BLDG. (FLOOD WATERS RECEEDING).

PHOTO # 13 OF 13