



UNITED STATES DEPARTMENT OF THE INTERIOR
NATIONAL PARK SERVICE

NATIONAL REGISTER OF HISTORIC PLACES
PROPERTY PHOTOGRAPH FORM

(Type all entries - attach to or enclose with photograph)

STATE New Mexico	
COUNTY Santa Fe	
FOR NPS USE ONLY	
ENTRY NUMBER 16	DATE APR 16 1973

1. NAME

COMMON: Pueblo of Tesuque (Tatunge)

AND/OR HISTORIC:

2. LOCATION

STREET AND NUMBER:

On the west bank of the Tesuque River

CITY OR TOWN:

Approx. 8 miles north of Santa Fe.

STATE:

New Mexico

CODE

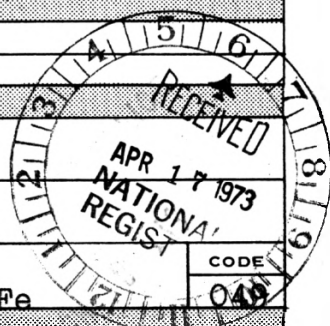
35

COUNTY:

Santa Fe

CODE

048



3. PHOTO REFERENCE

PHOTO CREDIT: Richard Federici

DATE OF PHOTO: 12-26-73

NEGATIVE FILED AT: State Planning Office, 200 W. DeVargas,
Santa Fe, New Mexico.

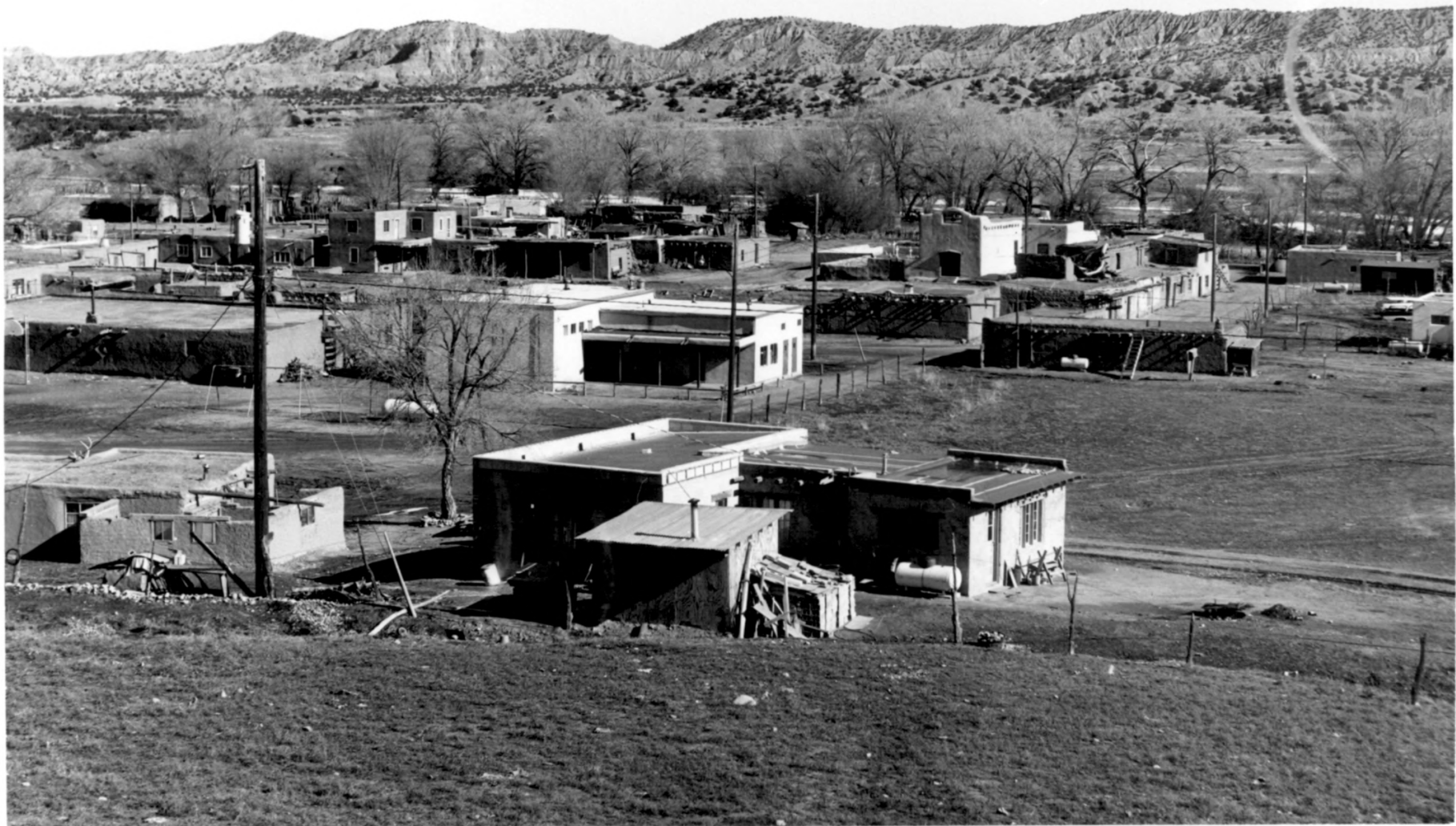
4. IDENTIFICATION

DESCRIBE VIEW, DIRECTION, ETC.

View of Church taken from position facing north by
northwest

#1 of 2

SEE INSTRUCTIONS



UNITED STATES DEPARTMENT OF THE INTERIOR
NATIONAL PARK SERVICE

NATIONAL REGISTER OF HISTORIC PLACES
PROPERTY PHOTOGRAPH FORM

(Type all entries - attach to or enclose with photograph)

STATE New Mexico	
COUNTY Santa Fe	
FOR NPS USE ONLY	
ENTRY NUMBER	DATE
	JUL 16 1973

1. NAME

COMMON: Pueblo of Tesuque (Tatunge)

AND/OR HISTORIC:

2. LOCATION

STREET AND NUMBER:

On the west bank of the Tesuque River

CITY OR TOWN:

Approx. 8 miles north of Santa Fe.

STATE:

New Mexico

CODE

35

COUNTY:

Santa Fe

CODE

18049

3. PHOTO REFERENCE

PHOTO CREDIT: Richard Federici

DATE OF PHOTO: 2-26-73

NEGATIVE FILED AT: State Planning Office, 200 W. DeVargas, Santa Fe, New Mexico.

4. IDENTIFICATION

DESCRIBE VIEW, DIRECTION, ETC.

Overall view of the pueblo taken facing northwest.

#2 of 2

SEE INSTRUCTIONS

