



Buildings #16, #15 and Site #14 (foreground)

Buildings #19 and #20 (background)

Winooski Falls Historic District Amendment (Boundary Increase)

Burlington, Chittenden County, Vermont

Photograph by Louis L. McAllister from the Louis L. McAllister  
Papers, Wilbur Collection, Bailey-Howe Library, University  
of Vermont, Burlington, Vt.

1927

Negative filed at Vermont Division for Historic Preservation

View looking South

Photo 1

86-A-207



Colchester Avenue

86-7-206

Building #20 (right) and Riverside Garage (left, no longer standing)

Winooski Falls Historic District Amendment (Boundary Increase)

Burlington, Chittenden County, Vermont

Photograph by Louis L. McAllister from the Louis L. McAllister Papers, Wilbur Collection, Bailey-Howe Library, University of Vermont, Burlington, Vt.

c. 1927

Negative filed at Vermont Division for Historic Preservation

View looking East

Photo 2



Structure #13 (foreground)

86-A-207

Buildings #17, #14, #15, and Site #14 (background)

Buildings #19 and #20 (far background)

Winooski Falls Historic District Amendment (Boundary Increase)

Burlington, Chittenden County, Vermont

Photograph by Louis L. McAllister from the Louis L. McAllister  
Papers, Wilbur Collection, Bailey-Howe Library, University  
of Vermont, Burlington, Vt.

1928

Negative filed at Vermont Division for Historic Preservation

View looking South

Photo 3



86-7-206

Colchester Avenue

Structure #13 (background) and Buildings #20 and #15

Winooski Falls Historic District Amendment (Boundary Increase)

Burlington, Chittenden County, Vermont

Photograph by Louis L. McAllister from the Louis L. McAllister  
Papers, Wilbur Collection, Bailey-Howe Library, University  
of Vermont, Burlington, Vt.

October 1929

Negative filed at Vermont Division for Historic Preservation

View looking North

Photo 4





Colchester Avenue

86-7-207

Structure #13 (foreground) and Buildings #15, Riverside Garage  
(no longer standing) and #20

Winooski Falls Historic District Amendment (Boundary Increase)

Burlington, Chittenden County, Vermont

Photograph by Louis L. McAllister from the Louis L. McAllister  
Papers, Wilbur Collection, Bailey-Howe Library, University  
of Vermont, Burlington, Vt.

c. 1929

Negative filed at Vermont Division for Historic Preservation

View looking South

Photo 5



Mill Street

86-7-207

Buildings #1, #17, #14, #15

Winooski Falls Historic District Amendment (Boundary Increase)

Burlington, Chittenden County, Vermont

Photograph by Louis L. McAllister from the Louis L. McAllister  
Papers, Wilbur Collection, Bailey-Howe Library, University  
of Vermont, Burlington, Vt.

November 1935

Negative filed at Vermont Division for Historic Preservation

View looking west

Photo 6



Mill Street

S67-207

Buildings #17, #16, #15 and Structure #13

Winooski Falls Historic District Amendment (Boundary Increase)

Burlington, Chittenden County, Vermont

Photograph by Louis L. McAllister from the Louis L. McAllister  
Papers, Wilbur Collection, Bailey-Howe Library, University  
of Vermont, Burlington, Vt.

November 1935

Negative filed at Vermont Division for Historic Preservation

View Looking West

Photo 7



86A-206

Barrett Street

Buildings #20, #19, #18

Winooski Falls Historic District Amendment (Boundary Increase)

Burlington, Chittenden County, Vermont

Photograph by Louis L. McAllister from the Louis L. McAllister  
Papers, Wilbur Collection, Bailey-Howe Library, University of  
Vermont, Burlington, Vt.

June 1941

Negative filed at Vermont Division for Historic Preservation

View looking Northeast

Photograph 8





86-7-208

Barrett Street

Buildings #20, #19, #19a

Winooski Falls Historic District Amendment (Boundary Increase)

Burlington, Chittenden County, Vermont

Photograph by Louis L. McAllister from the Louis L. McAllister

Papers; Wilbur Collection, Bailey-Howe Collection, University  
of Vermont, Burlington, VT

June 1941

Negative filed at Vermont Division for Historic Preservation

View looking East

Photo 9



Colchester Avenue

86-A-204 10

Buildings #15, #20, #19

Winooski Falls Historic District Amendment (Boundary Increase)

Burlington, Chittenden County, Vermont

Photograph by Thomas D. Visser

August 1986

Negative filed at Vermont Division for Historic Preservation

View looking Northeast

Photo 10



13. The Winooski Bridge

86-7-209 #1

14. Burlington Flouring Company Grist Mill Site

Winooski Falls Historic District Amendment (Boundary Increase)

Winooski/Burlington, Chittenden County, Vermont

Photograph by Thomas D. Visser

August 1986

Negative filed at Vermont Division for Historic Preservation

View looking Northeast

Photo 11



15. Duncan Blacksmith Shop (495-97 Colchester Avenue) 86-77-205  
Winooski Falls Historic District Amendment (Boundary Increase)

Burlington, Chittenden County, Vermont

Photograph by Thomas D. Visser

August 1986

Negative filed at Vermont Division for Historic Preservation

View looking East.

Photo 12





86-A-206-13

15. Duncan Blacksmith Shop (495-97 Colchester Avenue)

Winooski Falls Historic District Amendment (Boundary Increase)

Burlington, Chittenden County, Vermont

Photograph by Louis L. McAllister from the Louis L. McAllister

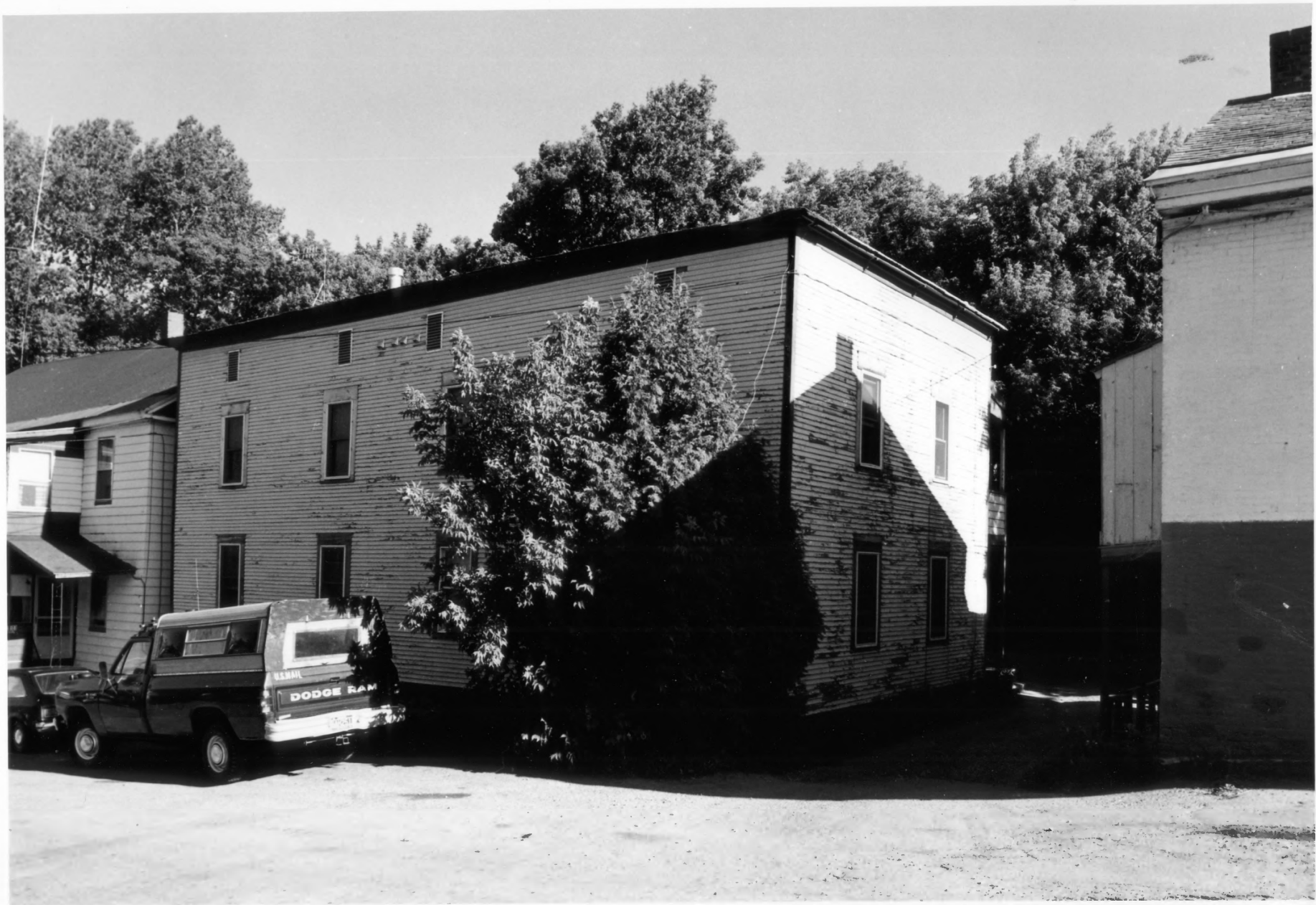
Papers, Wilbur Collection, Bailey-Howe Library, University  
of Vermont, Burlington, Vt.

c. 1927

Negative filed at Vermont Division for Historic Preservation

View looking East

Photograph 13



16. I. S. Dubuc Tenement Building (5-11 Mill Street)

Winooski Falls Historic District Amendment (Boundary Increase)

Burlington, Chittenden County, Vermont

Photograph by Thomas D. Visser

August 1986

Negative filed at Vermont Division for Historic Preservation

View looking Southeast

Photo 14

86-7-205



86A-205

17. Burlington Cotton Company Tenant Building  
(13-19 Mill Street)

Winooski Falls Historic District Amendment (Boundary Increase)

Burlington, Chittenden County, Vermont

Photograph by Thomas D. Visser

August 1986

Negative filed at Vermont Division for Historic Preservation

View looking Southwest

Photograph 15



17a. 21 Mill Street

Winooski Falls Historic District Amendment (Boundary Increase)

Burlington, Chittenden County, Vermont

Photograph by Thomas D. Visser

August 1986

Negative filed at Vermont Division for Historic Preservation

View looking West

Photo 16

86 A-204





18. Burlington Cotton Company Tenement Building (32 Barrett  
Street)

86-A-206

Winooski Falls Historic District Amendment (Boundary Increase)

Burlington, Chittenden County, Vermont

Photograph by Thomas D. Visser

August 1986

Negative filed at Vermont Division for Historic Preservation

View looking Northeast

Photo 17



19. Hickock - Burlington Cotton Company Tenement

Duplex (14-16 Barrett Street)

86-7-204

Winooski Falls Historic District Amendment (Boundary Increase)

Burlington, Chittenden County, Vermont

Photograph by Thomas D. Visser

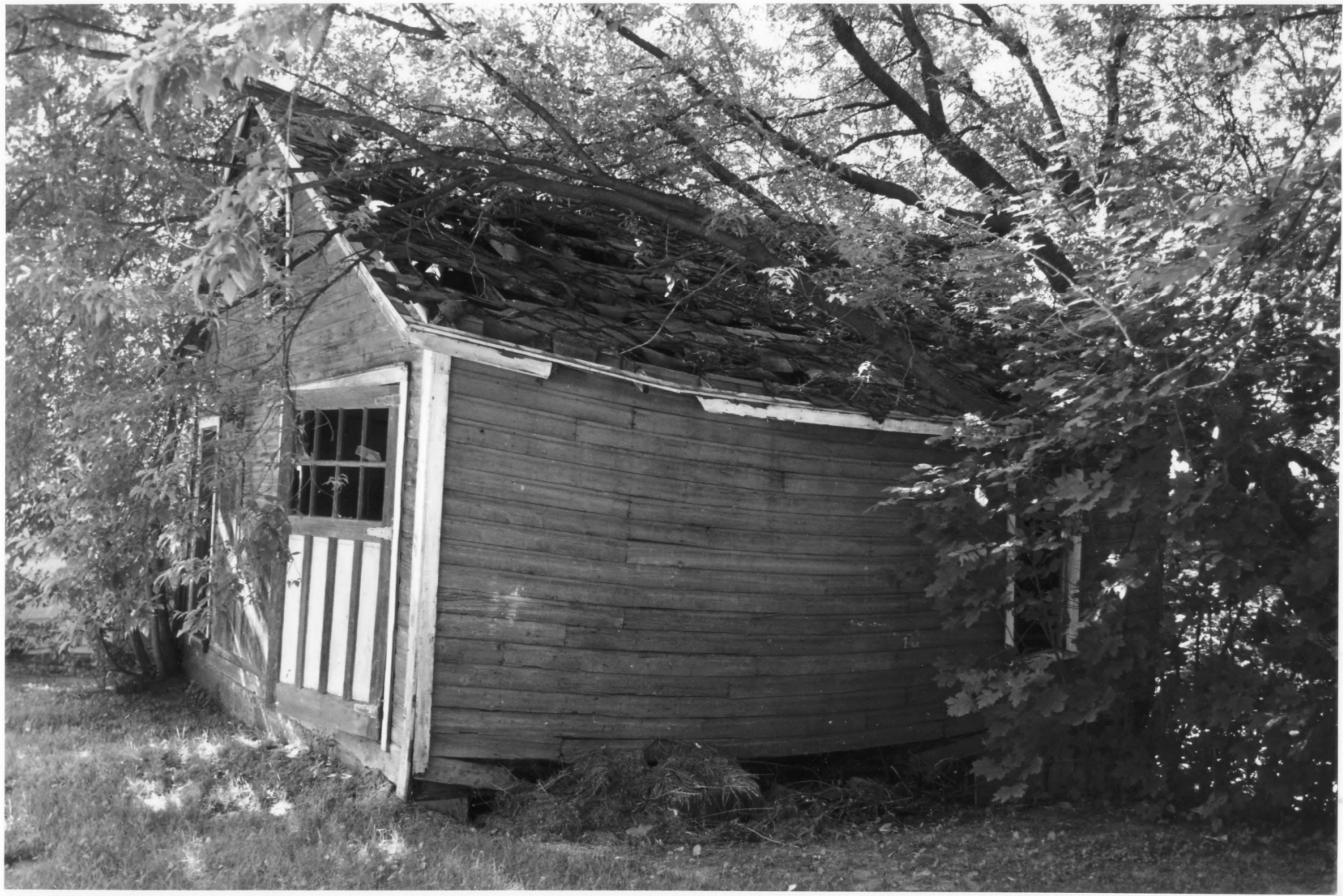
August 1986

Negative filed at Vermont Division for Historic Preservation

View looking Northeast

Photo 18

(Demolished, March 1993)



86-A-205 19.

19 a. Garage (18 Barrett Street)

Winooski Falls Historic District Amendment (Boundary Increase)

Burlington, Chittenden County, Vermont

Photograph by Thomas D. Visser

August 1986

Negative filed at Vermont Division for Historic Preservation

View looking Northwest

Photo 19

(Demolished c1992)



20. Hickock - Burlington Cotton Company Tenement Building  
(485 Colchester Avenue / 8-10 Barrett Street

86-~~D~~-205

Winooski Falls Historic District Amendment (Boundary Increase)  
Burlington, Chittenden County, Vermont

Photograph by Thomas D. Visser

August 1986

Negative filed at Vermont Division for Historic Preservation

View looking Southeast

Photo 20

(addition at left demolished c. 1990)





Barrett Street

86-7-206

Buildings #19a, #19, #20

Winooski Falls Historic District Amendment (Boundary Increase)

Burlington, Chittenden County, Vermont

Photograph by Louis L. McAllister from the Louis L. McAllister  
Papers, Wilbur Collection, Bailey Howe Library, University  
of Vermont, Burlington, Vt.

September 1941

Negative filed at Vermont Division for Historic Preservation

View looking West

Photograph 21