



NPS Number 91-9-34-0018

Title: Batsto Village

Loc. Burlington Co., NJ.
Stone walled forage
pit

#4665
Batsto



NPS Number 71.9.34.0018

Title: Batsto Village

Loc. Burlington Co, NJ
Double corn crib

CAPTION

Corn crib at the Colonial Village of Batsto, located on the 96,000 acre State-owned Wharton Tract in central-south Jersey. This historic site and tract of land is supervised by the New Jersey Department of Conservation and Economic Development, Trenton.

#

PROPERTY OF THE NATIONAL REGISTER

4671 - 5/1/57 Corn crib ab Batsto

MWR



Public Information Office
Dept. of Conservation &
Economic Development
205 West State Street
Trenton 25, New Jersey

AS Number 71.9.34.0018

Title: Batsto Mansion

Loc. Burlington Co., NJ
West End of Batsto
Mansion



70 P 90

copy

Public Information
Office of the Commissioner
New Jersey Dept. of Conservation &
Economic Development
Labor & Industry Building
John Fitch-Plaza
P. O. Box 1390
Trenton 25, New Jersey

NPS Number 71.9.34.0018

Title: Batsto Village

Loc. Burlington Co., NJ
Mansion from the
southeast



Public Information
Office of the Commissioner
New Jersey Dept. of Conservation &
Economic Development
Labor & Industry Building
John Fitch-Plaza
P. O. Box 1390
Trenton 25, New Jersey

70991

Copy

NPS Number 71.9.340018

Title: Batsto Mansion

Loc. Burlington Co., NJ
Batsto Mansion from
the southeast corner

⑤



NPS Number 71.9.34.0018

Title: Batsto Village

Loc. Burlington Co, NJ

Two of 18 original
workers cottages

(6)

PROPERTY OF THE NATIONAL REGISTER

Batsto Iron Worker's Houses

4761



Public Information Office
Dept. of Conservation &
Economic Development
205 West State Street
Trenton 25, New Jersey

NPS Number 71.9.34.0018

Title: Batsto Mansion

Loc. Burlington Co., NJ
interior - Batsto
Mansion

PROPERTY OF THE NATIONAL REGISTER

7067
~~7026~~-60



NPS Number 71.9.34.0018

Title: Batsto Village

Loc. Burlington Co, NJ
Aerial View of entire
Village

⑨

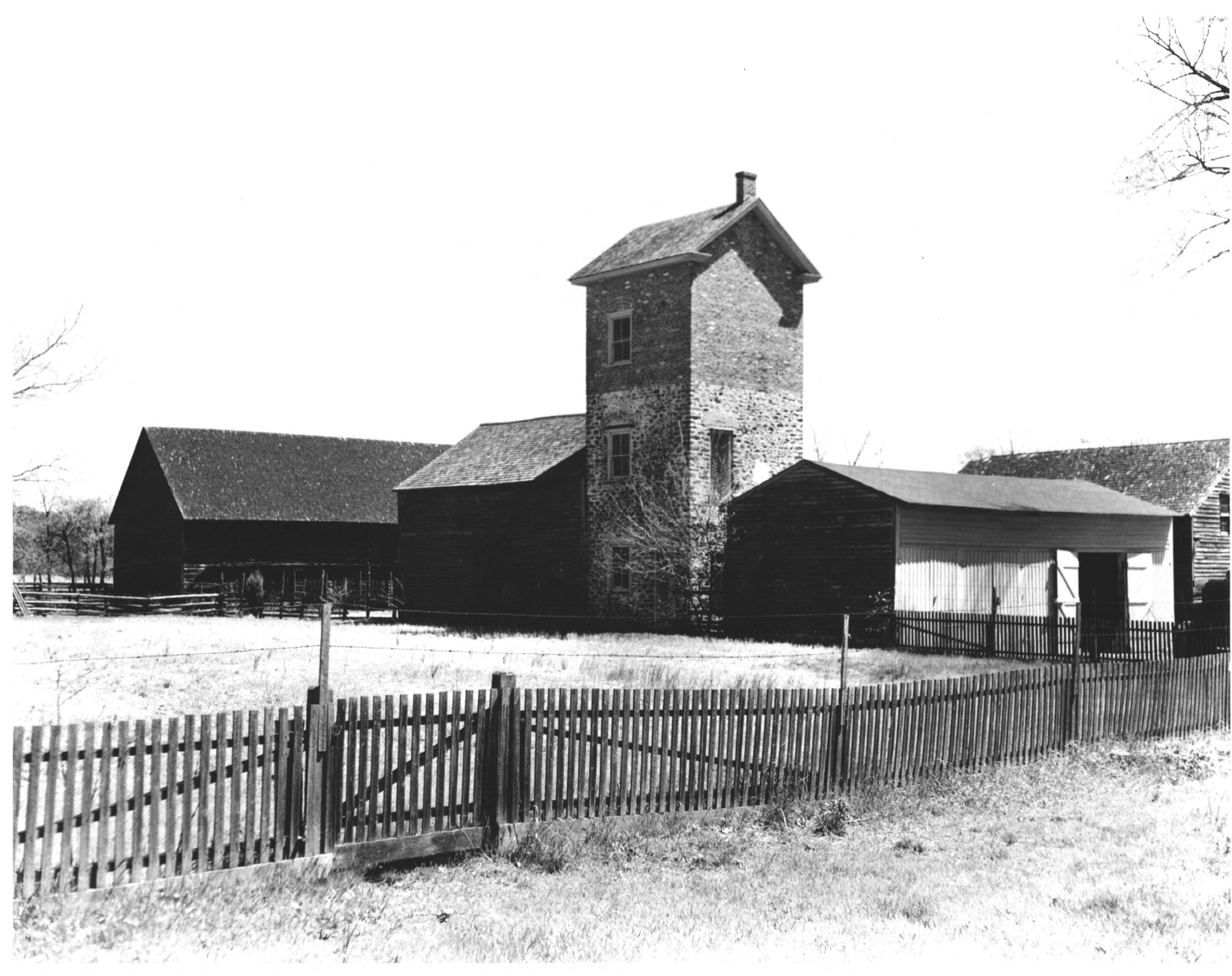
PROPERTY OF THE NATIONAL REGISTER

JACK E. BOUCHER

Photographer

25 JACKSON AVE. NORTHFIELD, N.J.

JBP-61-122



4657

Batsto

NPS Number 71.9.34.0018

Title: Batsto Village

Loc. Burlington Co, New Jersey
Batsto barn complex
from the NW



Department of Conservation and Economic
Development, Room 3, State House Annex
Trenton 7, New Jersey

Number 71.9.34.0018

Title: *Batsto Village # 37*
store - Post Office

Loc. *Burlington Co, New Jersey*

The Batsto store post office

PROPERTY OF THE NATIONAL REGISTER

This Photo is Loaned
PLEASE RETURN
N. J. Dept. Conservation
Trenton 7, New Jersey

*Photo - Burlington Co
Batsto NJ
(see article on
N.J. Wetlands
Wilderness)*

Department of Conservation and Economic
Development, Room 3, State House Annex
Trenton 7, New Jersey

SUN	NAME OF SUBJECT
SIZE <i>3 x 3 3/4</i>	ADDRESS
% <i>64.8</i>	CITY
LETTER <i>FSF</i>	REMARKS
<i>9/10/60</i>	

Batsto