



#15

1247

GRIDLEY-HOWE-FADEN-ATKINS FARMSTEAD (BROOKSIDE FARM)

NEHBS # KMD-002

RURAL KIMBALL COUNTY, NEBRASKA

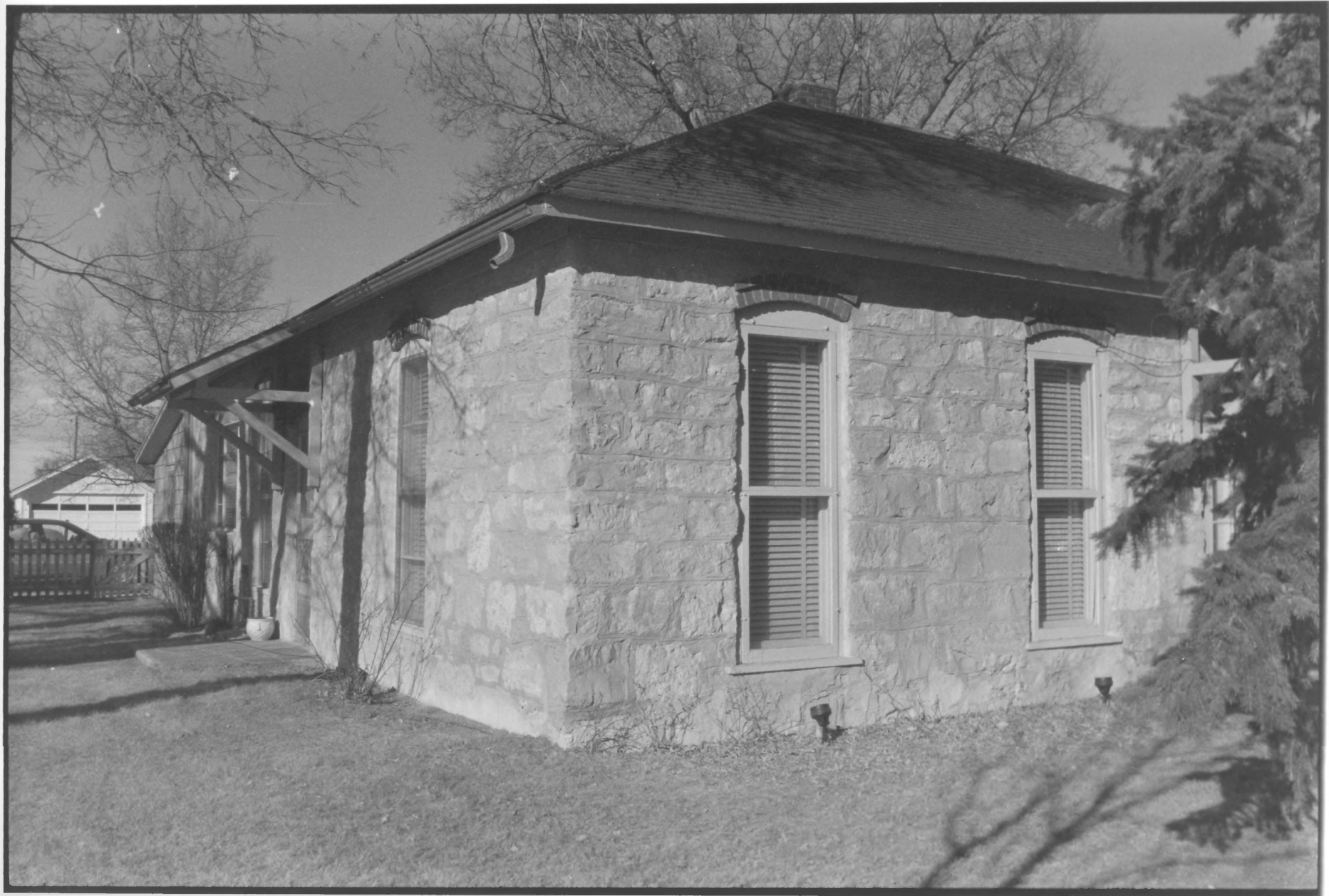
PHOTO BY BILL CALLAHAN, JAN. 1997

NEBRASKA STATE HISTORICAL SOCIETY

(NSHS 9701/4:15)

FARMHOUSE, VIEW LOOKING NORTH, NORTHWEST.

PHOTO 1 of 12



#30

1247

GRIDLEY-HOWE-FADEN-ATKINS FARMSTEAD (BROOKSIDE FARM)

NEHBS # KMOD-002

RURAL KIMBALL COUNTY, NEBRASKA

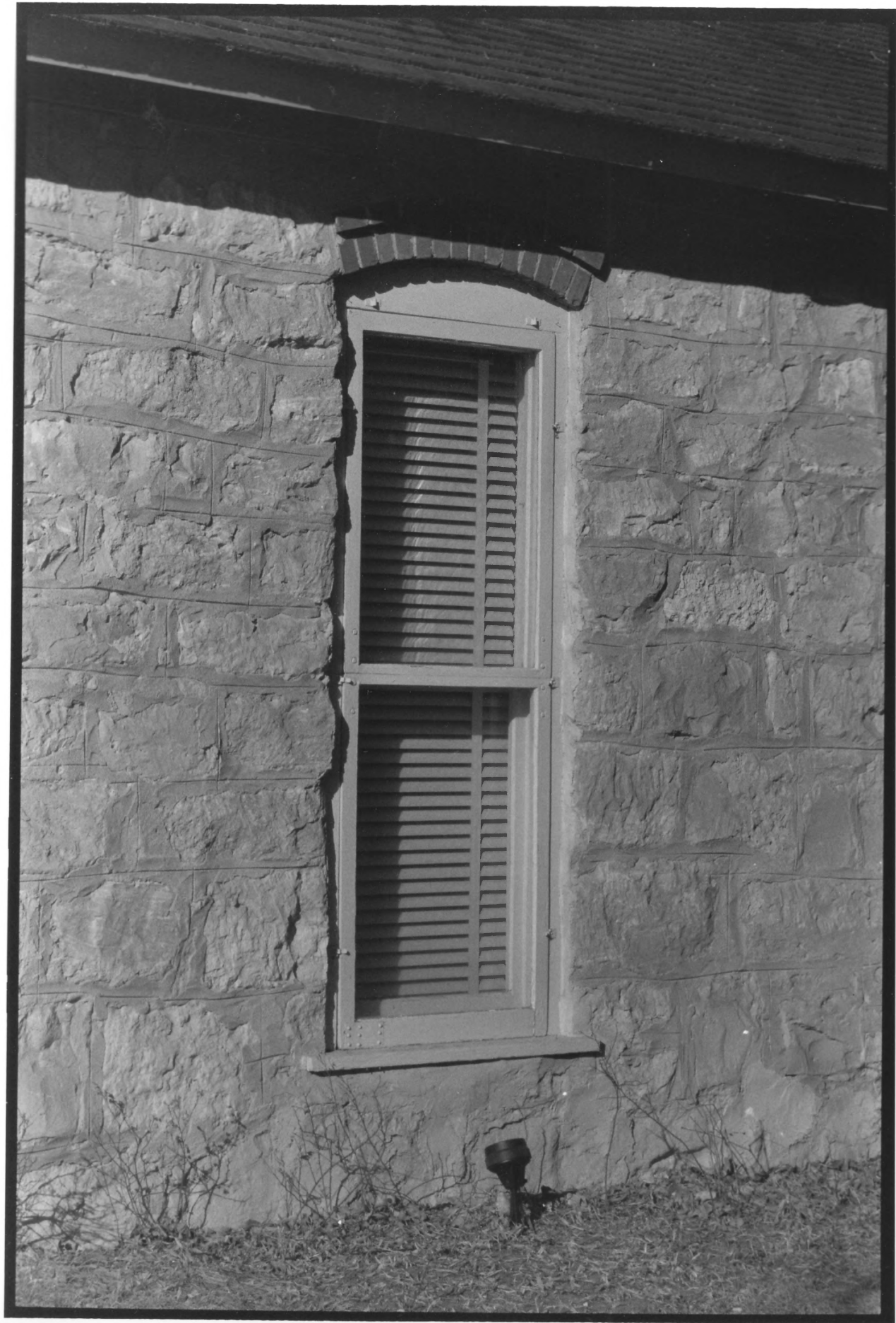
PHOTO BY BILL CALLAHAN, JAN. 1997

NEBRASKA STATE HISTORICAL SOCIETY

(NSHS 9701/4:30)

FARM HOUSE, VIEW LOOKING WEST.

PHOTO 2 of 12



247  
GRIDLEY-HOWE-FADEN-ATKINS FARMSTEAD (BROOKSIDE FARM)

NEHBS # KM00-002

RURAL KIMBALL COUNTY, NEBRASKA

PHOTO BY BILL CALLAHAN, JAN. 1997

NEBRASKA STATE HISTORICAL SOCIETY

(NSHS 9701/4:29)

FARM HOUSE, WINDOW DETAIL, VIEW LOOKING NORTHWEST.

PHOTO 3 of 12

# 29



1247

GRIDLEY-HOWE-FADEN-ATKINS FARMSTEAD (BROOKSIDE FARM)

NEHBS # KM00-002

RURAL KIMBALL COUNTY, NEBRASKA

PHOTO BY BILL CALLAHAN, JAN. 1997

NEBRASKA STATE HISTORICAL SOCIETY

(NSHS 9701/4:25)

TANK HOUSE

PHOTO 4 of 12

#25





GRIDLEY-HOWE-FADEN-ATKINS FARMSTEAD (BROOKSIDE FARM)

NEHBS # KM00-002

RURAL KIMBALL COUNTY, NEBRASKA

PHOTO BY BILL CALLAHAN, JAN. 1997

NEBRASKA STATE HISTORICAL SOCIETY  
(NSHS 9701/4:0)

HOG SHED, VIEW LOOKING NORTH

PHOTO 5 of 12

L7701



#3

1247

GRIDLEY-HOWE-FADEN-ATKINS FARMSTEAD (BROOKSIDE FARM)

NEHBS #KM00-002

RURAL KIMBALL COUNTY, NEBRASKA

PHOTO BY BILL CALLAHAN, JAN. 1997

NEBRASKA STATE HISTORICAL SOCIETY

(NSHS 9701/4:3)

HOG SHED & BARN, VIEW LOOKING WEST

PHOTO 6 of 12



#1

1247

GRIDLEY-HOWE-FADEN-ATKINS FARMSTEAD (BROOKSIDE FARM)

NEHBS # KM00-002

RURAL KIMBALL COUNTY, NEBRASKA

PHOTO BY BILL COLAHAN, JAN. 1997

NEBRASKA STATE HISTORICAL SOCIETY

(NSHS 9701/4:1)

BARN & SHEEP BARN, VIEW LOOKING WEST

PHOTO 7 of 12



#0

1247

GRIDLEY-HOWE-FADEN-ATKINS FARMSTEAD (BROOKSIDE FARM)

NEHBS # KMOD-002

RURAL KIMBALL COUNTY, NEBRASKA

PHOTO BY BILL CALLAHAN, JAN. 1997

NEBRASKA STATE HISTORICAL SOCIETY

(NSHS 9701/5:0)

BARN & SHEEP BARN, VIEW LOOKING SOUTHEAST

PHOTO 8 of 12





#1

1247

GRIDLEY-HOWE-FADEN-OTKINS FARMSTEAD (BROOKSIDE FARM)

NEHBS # KM00-002

RURAL KIMBALL COUNTY, NEBRASKA

PHOTO BY BILL CALLAHAN, JAN. 1997

NEBRASKA STATE HISTORICAL SOCIETY

(NSHS 9701/5:1)

SHEEP BARN, VIEW LOOKING SOUTHEAST

PHOTO 9 of 12



#4

1247

GRIDLEY - HOWE - FADEN - ATKINS FARMSTEAD (BROOKSIDE FARM)

NEHBS # KM00-002

RURAL KIMBALL COUNTY, NEBRASKA

PHOTO BY BILL COLAHAN, JAN. 1997

NEBRASKA STATE HISTORICAL SOCIETY

(NSHS 9701/5:4)

SHEEP BARN. BARN, VIEW LOOKING NORTHEAST

PHOTO 10 of 12



#34

1247

GRIDLEY-HOWE-FADEN-ATKINS FARMSTEAD (BROOKSIDE FARM)  
NEHBS # KM00-002  
RURAL KIMBALL COUNTY, NEBRASKA

PHOTO BILL CALLAHAN, JAN. 1997  
NEBRASKA STATE HISTORICAL SOCIETY  
(NSHS 9701/4:34)

OVERALL VIEW OF FARM BUILDINGS, SHOWING GARAGE, SHEEP BARN & BARN,  
VIEW LOOKING WEST  
PHOTO 11 OF 12



#9

1247

GRIDLEY-HOWE-FADEN-ATKINS FARMSTEAD (BROOKSIDE FARM)  
(NEHBS # KM00-002)  
RURAL KIMBALL COUNTY, NEBRASKA

PHOTO BY BILL CALLAHAN, JAN. 1997  
NEBRASKA STATE HISTORICAL SOCIETY  
(NSHS 9701/5:9)

CHICKEN COOP, VIEW LOOKING NORTHEAST

PHOTO 12 of 12