



WA-I-159 - Lantz-Ziegler House

Washington Co MD

m. Stinson, 4/97

MD SHPO

S. elev.

neg #2

#1/10



WA-I-159 Lantz-Ziegler House
Washington Co. MD.

M. Stinson 10/96

East elevation

MD SHPO

neg #16

2/10



WA-I-159 Lantz-Ziegler House

Washington Co. MD

M. Stinson, 4/97

MD SHPO

W. elev.

neg #5

#3/10



WA - I - 159 Lantz - Ziegler House

Washington County MD

M. Stinson, 4/97

MD SHPO

stair

neg # 26

4/10

A large, stylized handwritten signature or set of initials, possibly 'JL', written in black ink.



WA-I-159 Lantz-Ziegler House

Washington County MD

M. Stinson, 4/97

MD SHPO

door = SW room

key # 22.

5 / 10



WA - I - 159 Lantz - Ziegler House

Washington County MD

m. Stinson, 4/97

MD SHPO.

NW study: mantel

neg #230

#6/10



WA-I-159 Lantz-Ziegler House
Washington Co. MD

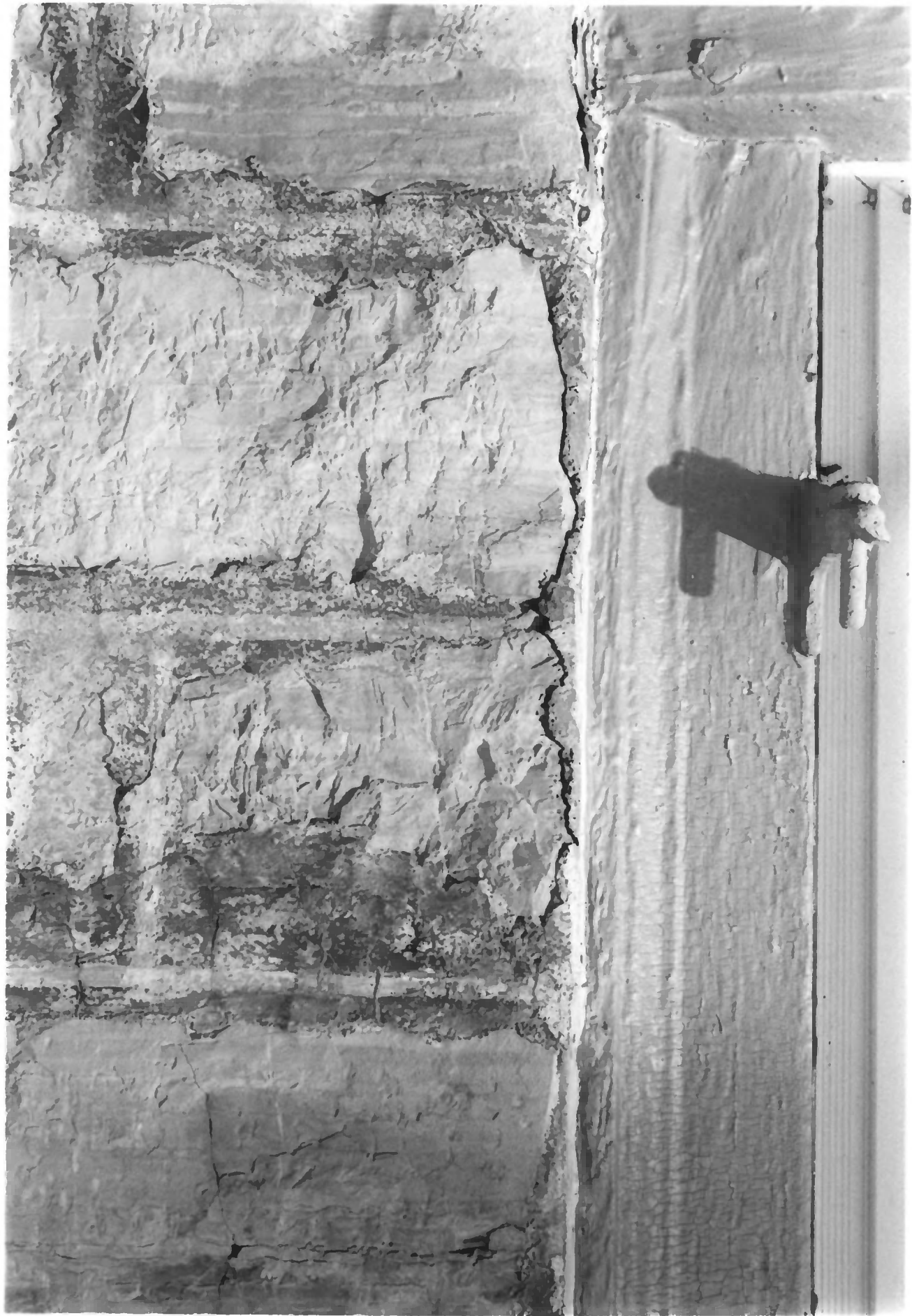
M. Stinson, 4/97

MD SHPO

E. parlor fireplace

neg # 20

7 / 10



WA-I-159 - Lantz - Ziegler House

Washington County MD

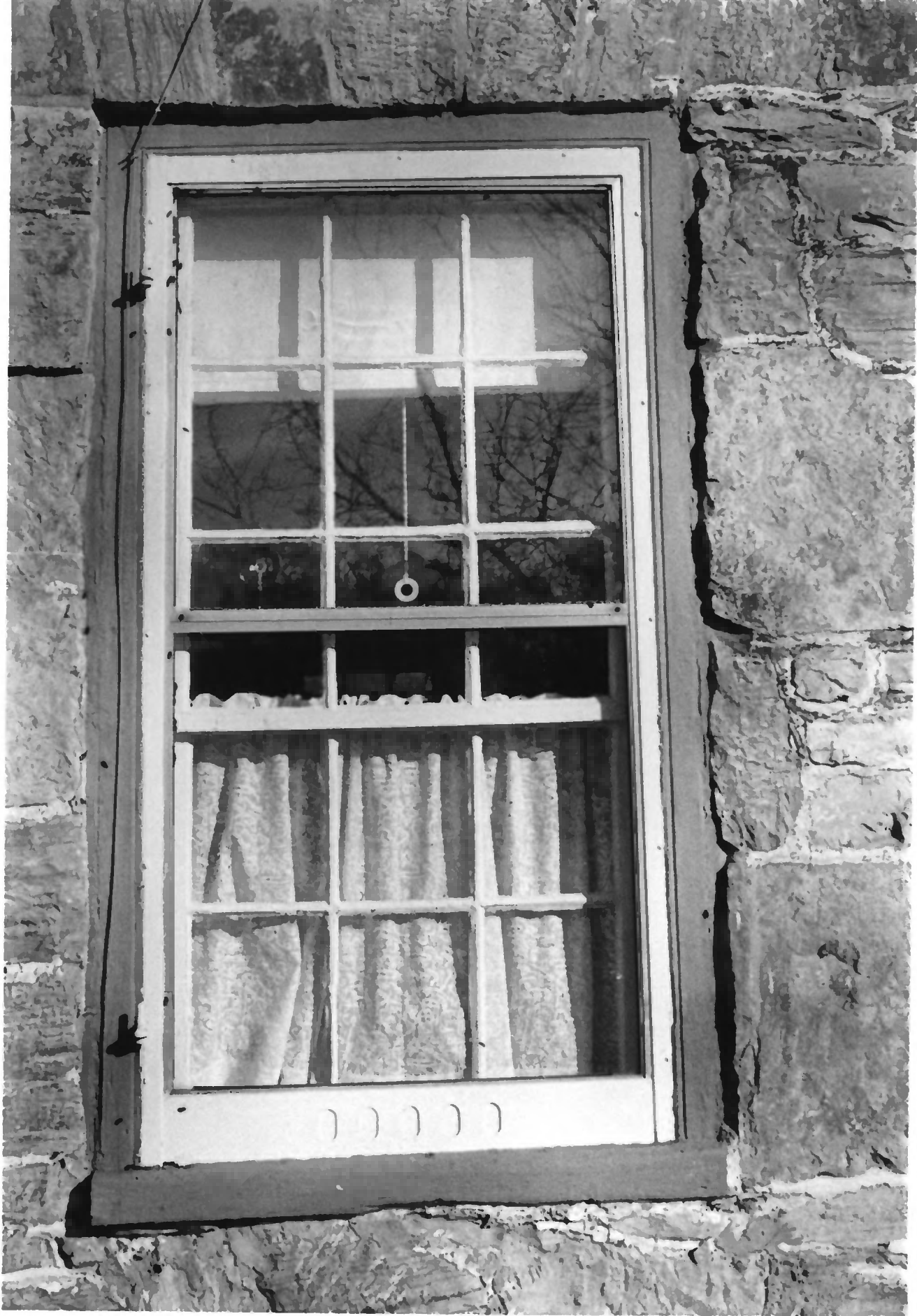
m. Stinson, 4/97

MD SHPO

Selev. mortar joints

neg #31

#8/10



WA-I-159- Lantz Ziegler House

Washington County MD

m. Stinson, 4/97

MD SHPo

w.elev. = ell

neg #7

9/10



WA-I-159 Lantz-Ziegler House
Washington Co. MD
M. Stinson, 4/97

MD SHPO
E. elev. well

10/10