

United States Department of the Interior
National Park Service

National Register of Historic Places Continuation Sheet

Name of Property

County and State

Name of multiple property listing (if applicable)

Section number _____ Page _____

SUPPLEMENTARY LISTING RECORD

NRIS Reference Number: 15000074

Date Listed: 3/17/2015

Property Name: Davis, W.T., Building

County: Madison

State: FL

This property is listed in the National Register of Historic Places in accordance with the attached nomination documentation subject to the following exceptions, exclusions, or amendments, notwithstanding the National Park Service certification included in the nomination documentation.



Signature of the Keeper

3-17-2015

Date of Action

Amended Items in Nomination:

Section 2: Location

The address of this property is hereby changed to 196-200 Southwest Range Avenue

The Florida State Historic Preservation Office was notified of this amendment.

DISTRIBUTION:

- National Register property file**
- Nominating Authority (without nomination attachment)**

United States Department of the Interior
National Park Service

NATIONAL REGISTER OF HISTORIC PLACES
REGISTRATION FORM



74

This form is for use in nominating or requesting determinations for individual properties and districts. See instructions in How to Complete the National Register of Historic Places Registration Form (National Register Bulletin 16A). Complete each item by marking "x" in the appropriate box or by entering the information requested. If any item does not apply to the property being documented, enter "N/A" for "not applicable." For functions, architectural classification, materials, and areas of significance, enter only categories and subcategories from the instructions. Place additional entries and narrative items on continuation sheets (NPS Form 10-900a). Use a typewriter, word processor, or computer, to complete all items.

1. Name of Property

historic name W.T. DAVIS BUILDING

other names/site number FMSF # MD187

2. Location

street & number 200 Southeast Range Avenue N/A not for publication

city or town Madison N/A vicinity

state Florida code FL county Madison code 079 zip code 32340

3. State/Federal Agency Certification

As the designated authority under the National Historic Preservation Act, as amended, I hereby certify that this nomination request for determination of eligibility meets the documentation standards for registering properties in the National Register of Historic Places and meets the procedural and professional requirements set forth in 36 CFR Part 60. In my opinion, the property meets does not meet the National Register criteria. I recommend that this property be considered significant nationally statewide locally. (See continuation sheet for additional comments.)

Glissa Lade Lotane 1/21/15
Signature of certifying official/Title Date

Florida Department of State, Division of Historical Resources, Bureau of Historic Preservation
State or Federal agency and bureau

In my opinion, the property meets does not meet the National Register criteria. (See continuation sheet for additional comments.)

Signature of certifying official/Title Date

State or Federal agency and bureau

4. National Park Service Certification

I hereby certify that the property is:

- entered in the National Register
 - See continuation sheet
- determined eligible for the National Register
 - See continuation sheet.
- determined not eligible for the National Register
 - See continuation sheet.
- removed from the National Register.
- other, (explain) _____

Jerry Galt
Signature of the Keeper

Date of Action

3-17-2015

W.T. Davis Bldg.
Name of Property

Madison Co., FL
County and State

5. Classification

Ownership of Property
(Check as many boxes as apply)

- private
- public-local
- public-State
- public-Federal

Category of Property
(Check only one box)

- buildings
- district
- site
- structure
- object

Number of Resources within Property
(Do not include any previously listed resources in the count)

Contributing	Noncontributing	
1	0	buildings
0	0	sites
0	0	structures
0	0	objects
1	0	total

Name of related multiple property listings
(Enter "N/A" if property is not part of a multiple property listing.)

"N/A"

Number of contributing resources previously listed in the National Register

0

6. Function or Use

Historic Functions
(Enter categories from instructions)

COMMERCIAL: retail; professional _____

CULTURAL: theater _____

Current Functions
(Enter categories from instructions)

CULTURAL: museum/theater _____

7. Description

Architectural Classification
(Enter categories from instructions)

Masonry Two-Part Commercial Block _____

Materials
(Enter categories from instructions)

foundation BRICK _____

walls BRICK _____

METAL _____

roof METAL _____

other _____

Narrative Description

(Describe the historic and current condition of the property on one or more continuation sheets.)

W.T. Davis Building
Name of Property

Madison Co., FL
County and State

10. Geographical Data

Acreage of Property less than one

UTM References

(Place additional references on a continuation sheet.)

1	1	7	2	6	8	3	1	7	3	3	7	3	1	1	3
	Zone		Easting						Northing						
2															

3															
	Zone		Easting						Northing						
4															

See continuation sheet

Verbal Boundary Description

(Describe the boundaries of the property on a continuation sheet.)

Boundary Justification

(Explain why the boundaries were selected on a continuation sheet.)

11. Form Prepared By

name/title McLeod, Ann/Robert O. Jones, Historic Preservationist

organization Bureau of Historic Preservation date January 2015

street & number 500 South Bronough Street telephone 850-245-6333

city or town Tallahassee state FL zip code 32399-0250

Additional Documentation

Submit the following items with the completed form:

Continuation Sheets

Maps

A **USGS map** (7.5 or 15 minute series) indicating the property's location.

A **Sketch map** for historic districts and properties having large acreage or numerous resources.

Photographs

Representative **black and white photographs** of the property.

Additional items

(check with the SHPO or FPO for any additional items)

Property Owner

(Complete this item at the request of SHPO or FPO.)

name Treasures of Madison County Museum, Inc.; attn: Ann McLeod

street & number Post Office Box 541 telephone 850-973-6488

city or town Madison state Florida zip code 32340

Paperwork Reduction Act Statement: This information is being collected for applications to the National Register of Historic Places to nominate properties for listing or determine eligibility for listing, to list properties, and amend listings. Response to this request is required to obtain a benefit in accordance with the National Historic Preservation Act, as amended (16 U.S.C. 470 et seq.)

Estimated Burden Statement: Public reporting burden for this form is estimated to average 18.1 hours per response including time for reviewing instructions, gathering and maintaining data, and completing and reviewing the form. Direct comments regarding this burden estimate or any aspect of this form to the Chief, Administrative Services Division, National Park Service, P.O. Box 37127, Washington, DC 20013-7127; and the Office of Management and Budget, Paperwork Reductions Projects (1024-0018), Washington, DC 20503.

**United States Department of the Interior
National Park Service**

**NATIONAL REGISTER OF HISTORIC PLACES
CONTINUATION SHEET**

Section number 7 Page 1

**W. T. DAVIS BUILDING, MADISON,
MADISON COUNTY, FLORIDA**

SUMMARY

The W.T. Davis Building is located at 196 South Range Street in the City of Madison, Madison County, Florida. The two-story brick commercial building was constructed in 1892 by local builder William Turner Davis. It is an excellent example of a Two-Part Commercial Block Building that is enhanced with a Classical Style, ornamental sheet-metal façade manufactured by the Mesker Brothers Iron Works of St. Louis. The first story consists of original store fronts surrounding three entrances. A central single door flush with the elevation accesses the interior stairs, and to the north and south are two recessed entrances with double doors flanked by canted fixed-glass. The second story features an elaborate ornamental sheet-metal surface, and a bank of single windows. The windows are separated with Classical columns on pedestals. A large ornamental cornice with brackets forms the parapet. A triangular peak crowns the top with a name plate "W.T. Davis" beneath.

SETTING

The W. T. Davis Building was built by local entrepreneur, William Turner Davis, who also constructed several other buildings in the area. The building is located in downtown Madison, on the second block south of the Madison County Courthouse which fronts onto State Road 90, the major thoroughfare east/west through the city. The W. T. Davis building faces the east and is located on the southeast corner of Range and Rutledge Streets (Photo #1). The building is surrounded with commercial one and two-story buildings fronting onto sidewalks. The city is laid out on an orthogonal grid.

PHYSICAL DESCRIPTION

Exterior

The two-story brick building's north wall abuts an adjacent commercial two-story building clad in vinyl siding. The clipped-gable roof has a parapet and internal drain. All windows have double-hung 2/2 wooden sashes arranged individually on the façade, with individual and paired windows on the south elevation.

The east façade fronts onto Range Street and retains its original first story store fronts and the second story has a bank of nine single windows set within an ornamental pressed sheet-metal front manufactured by the Mesker Brothers of St. Louis. This features an elaborate cornice, and a parapet with triangular centerpiece with nameplate. The entire storefront first story is filled with fixed glass and glass transoms. The three separate entrances are equally spaced (Photo #2). The central door is wood paneled with a fixed glass window. This door is flush with the elevation. The other two entrances, south and north, have recessed double doors with canted fixed glass display windows flanking them. Framing all three entries are eight galvanized iron rectangular columns. Three of these columns on the south half of the elevation are marked "Mesker Bro's Front Builders St. Louis, Mo." The two corner columns have ornamental sheet-metal capitals. The second story is crowned by a cornice

**United States Department of the Interior
National Park Service**

**NATIONAL REGISTER OF HISTORIC PLACES
CONTINUATION SHEET**

Section number 7 Page 2

**W. T. DAVIS BUILDING, MADISON,
MADISON COUNTY, FLORIDA**

with two projecting corner ornamental brackets (Photo #3). Following the pattern of the three entrances on the first story, the nine windows on the second story are subtly grouped into threes. Classical columns separate each window, and pairs of columns separate every third window, with paired columns finishing the north and south ends. Above the windows is an ornamental entablature that spans the elevation. Above the entablature is a large projecting cornice with six sculpted brackets and smaller brackets lining the underside of the projection. The projection forms a parapet, with an ornamental triangular element that caps the center of the facade. Below the triangle is a name plate that reads "W.T. Davis," after the building's original owner and builder.

The south elevation fronts onto Rutledge Street with a brick wall, and is characterized with historic windows, two entryways (Photo #4). Projecting courses of structural brick outline three bays on this elevation as well as the division between the first and second story. Near the west corner is a single door with transom flanked by single 2/2 windows. The door has wood panels in the bottom half and a light in the top half (Photo #5). To the east of this door and windows is a single window, and to the east of it are (sealed) double doors with panels and lights like the other, topped by a transom. A contemporary metal awning shelters these windows and doors.

The west elevation fronts onto an alley. It has five windows on the second floor; one is in the south half, and four are in the north half with one of these in-filled. The first floor has six windows, four of which are boarded over.

Interior

On the first floor the two sets of double doors open into two large individual rooms, and the central single door opens to a flight of stairs to the second floor. The rooms have beadboard walls and ceilings. The single door entrance on Rutledge Street opens onto a genealogy and archives research room that extends halfway across the back of the building (Photo #6). A door in the interior north wall opens to the north half of the building. Most of the south half of the first floor (except the genealogy room) is used by the Treasures of Madison County Museum (Photos #7 & 8). The main entry at the northeast accessed an open room occupied by the Rural Area Theater that uses approximately a quarter of the first floor. A stage is located at the west side of the room (Photo #9). The northwest quarter of the first floor has storage rooms, a hall, a bathroom, and a dog-leg stairway to the second floor. The second floor is accessed by the long stairway that opens off the single central door in the east façade, or the dog-leg stairs in the northwest corner. From the long stairway landing to the west wall is a central hall (Photo #10). Off of this hall are eleven rooms that had been used as offices. The second floor is currently unoccupied.

ALTERATIONS

The interior of the W.T. Davis Building has undergone numerous partition changes to accommodate commercial retail and office space over the years. The 1903 Sanborn Map shows five different retail

**United States Department of the Interior
National Park Service**

**NATIONAL REGISTER OF HISTORIC PLACES
CONTINUATION SHEET**

Section number 7 Page 3

**W. T. DAVIS BUILDING, MADISON,
MADISON COUNTY, FLORIDA**

establishments occupying the first floor with partitions running east to west. Remarkably, most historic interior surfaces remain in both the northern and southern half of the interior. The biggest change was the removal of the opera house that occupied the second floor until the middle of the 20th century. Office spaces were created with studs and wooden paneling. Much of this appears to be non-historic.

The Treasures of Madison County Museum, Inc., was given the building in 1998 as a gift from Judge Charles McClure, a great-grandson of Mr. W. T. Davis. The Museum immediately began the work of restoring the building and received two preservation grants from the Florida Department of State, Bureau of Historic Preservation to assist in the effort.

**United States Department of the Interior
National Park Service**

**NATIONAL REGISTER OF HISTORIC PLACES
CONTINUATION SHEET**

Section number 8 Page 1

**W. T. DAVIS BUILDING, MADISON,
MADISON COUNTY, FLORIDA**

SUMMARY

The W. T. Davis Building is nominated to the National Register under Criterion C at the local level for its Architecture. Built in 1892 by William Turner Davis, a local master builder, he constructed this exceptional example of a Two-Part Commercial Block Building which employed the use of an elaborate, sculpted sheet-metal façade manufactured by the Mesker Brothers Front Makers in St. Louis, Missouri. The application of pressed metal facades was a nation-wide building trend during the late 19th and early 20th century, and the W.T. Davis Building is the most elaborate example locally and in the north central Florida region.

HISTORICAL CONTEXT

The W. T. Davis Building was originally constructed to house offices, small businesses, and an opera house for the community. Davis' son William had a pharmacy downstairs and his son, Charles, had his law practice upstairs. Judge Charles Edgar Davis, and his grandson, William Turner Davis, each eventually used the building to house their law practices. Mr. Davis constructed many landmark buildings in Madison such as St. Mary's Episcopal Church (NR 1997) at 108 North Horry Street; the Dial House (NR 1973) at 105 East Marion Street, and the Merchants Hotel at 111 North Range Street (which burned in 1907). Davis built for his children as well, with the Will Davis House at 200 West Marion Street, the Charles Davis House (destroyed by fire), and the Ida Davis Whitlock House at 503 West Base Street. His own home, which was behind the Ida Whitlock House on Pinckney Street was torn down. When the 1898 First Baptist Church sanctuary was built (NR 1978), Mr. Davis was called in to help the builders engineer the rafters to span the broad ceiling of that building. Davis was also the builder of the City Jail constructed in 1888. These buildings constitute a legacy of his creative vision and are community treasures.

The W. T. Davis Building functioned as the center of community activity from 1890-1910. The second floor housed the opera house which had bare, level, pine floors with straight back chairs that could be moved during a play to allow for a better view. These chairs functioned as the reserved seat section. Benches were provided for general admission and were elevated in the rear of the auditorium behind the reserved seat section. The large stage was on the west end of the room with dressing rooms on each side. This room was very important to the Madison County community and was used for many various functions. The hometown militia used it as an armory and their lockers lined the north wall. Thanksgiving, Christmas and New Year's dances were held there with tickets running from \$3.00-\$5.00 per couple (a significant amount for that time). Attractions like "The Old Maids Convention" staged by the local Knights of Pythias Lodge, and minstrel shows with all white performers played to large crowds.

The best documented event at Davis' Opera House was the scene of the last social function of the year 1901 when the society of the town gathered to participate in a farewell ball to the old year. The Valdosta Orchestra furnished music for the occasion. Elegant costumes were worn by the ladies and gentlemen. The society circles

United States Department of the Interior
National Park Service

**NATIONAL REGISTER OF HISTORIC PLACES
CONTINUATION SHEET**

Section number 8 Page 2

**W. T. DAVIS BUILDING, MADISON,
MADISON COUNTY, FLORIDA**

of nearby cities were well represented as they danced to waltzes.¹ The programs presented at the opera house ended sometime during the mid-century and the room was divided into offices occupied by lawyers and doctors.

William Turner Davis, builder of the W. T. Davis Building, was born in Madison on October 17, 1850 and lived in Madison almost all of his life. He spent a few years of his early life in Jacksonville, and Jefferson County, but returned to Madison in 1870 and stayed. In 1868, he married Sarah Rogers. Davis was an energetic man and with his business skills he acquired wealth. As a contractor and builder, many of Madison's substantial buildings were erected by him. He also engaged in farming on a considerable scale. He was a member of several fraternal orders such as the Masons, Knights of Pythias, and the Elks. His wife died in 1901, and he died on Sunday, October 20, 1907.

Charles Edgar Davis, son of William Turner and Sarah Rogers Davis, was born February 1, 1873 near Aucilla in Jefferson County, Florida, but grew up and lived nearly all his life in Madison. He had the first law office in the building the W. T. Davis Building. For a few years he lived in Miami, where he served as City Attorney for Coral Gables and as Assistant City Attorney for the city of Miami. He graduated from the University of Florida, when it was located in Lake City. He received his law degree from Washington and Lee University. Mr. Charles Edgar Davis and his wife, the former Miss Leila Stoy, were the parents of four children. Judge Davis was a member of the Florida House of Representatives in 1909, and then served two terms in the Florida Senate. He was President of the Senate in 1915, a position to which his son, W. Turner Davis, attained exactly forty years later. About 1928 he was appointed by the Florida Supreme Court to be one of three Supreme Court Commissioners to assist in disposing of the overload of cases that had built up during the Florida boom days and served in that capacity for several years. He was also at various times City Attorney of Madison and Greenville, Madison County Attorney, School Board Attorney and County Prosecuting Attorney. Mr. Davis retired from the active practice of law on January 1, 1957 and passed away on March 5, 1958. His political career included: Chairman of the State Democratic Executive Committee, Chairman of Indian War Claims Commission during Governor Broward's Administration, Member of House of Representatives (1909), State Senator two terms, State Senate President (1915); and Member of a Supreme Court Commission (1929-1932).²

William Turner Davis, son of Charles Edgar and Leila Stoy Davis, was born on August 1, 1901 in Madison County, Florida. He married the former Miss Cora "Dot" Beggs, who was born about 1900 in Madison. He graduated from the University of Florida, College of Law. Davis left many legacies such as the Florida Highway Patrol Station in Madison. He was the "founding father" of the Madison Bank and at his death was the senior law partner in the law firm of Davis, Browning and Schnitker. Sen. Davis was prominent in politics as a member of the "Pork Chop Gang" in the Florida legislature and proud of it. For ten years this group of rural legislators ran the Florida Senate, the House, and in the process, the state. He co-sponsored a bill to

¹ *New Enterprise* (newspaper), January 2, 1901.

² *Sarasota Herald-Tribune*, March 6, 1958; *Who's Who and What to See in Florida*, <http://fulltext.fcla.edu/DLData/SF/SFO>

**United States Department of the Interior
National Park Service**

**NATIONAL REGISTER OF HISTORIC PLACES
CONTINUATION SHEET**

Section number 8 Page 3

**W. T. DAVIS BUILDING, MADISON,
MADISON COUNTY, FLORIDA**

establish the Florida Junior College system. One of his proudest accomplishments was getting North Florida Junior College located in Madison. But, getting the junior college located in his hometown also ended his 20-years in the senate because his senate district also included Taylor County which also wanted the junior college. Mr. Davis and his father were the only father and son in state history to serve as senate presidents.

ARCHITECTURAL CONTEXT

The Commercial Style includes a building type known as the Two-Part Commercial Block that was common with small-scale masonry buildings in the United States between 1850 and 1950. The building façades, whether of two or three stories, are clearly delineated into two zones of use: retail store-fronts on the first story, and banks of symmetrically arranged windows at the second and third stories, indicative of office or domestic use. The first story included expanses of plate glass display store fronts, with transoms often included. The buildings typically rely on an eclectic selection of historic stylistic references to provide architectural distinction. Ornament is evidenced with distinctive brick work, parapets often sculpted or stepped, and windows with groupings of sashes, or the use of artistic sashes.³

The Mesker Brothers Iron Works, known also as the Mesker Brothers Front Builders, in St. Louis, Missouri, fabricated the sculpted sheet metal façade of the W.T. Davis Building. Two Mesker family firms competed to manufacture sculpted sheet metal exteriors for buildings since the 1880s. The Mesker Brothers Iron Works was operated by two brothers in St. Louis, Frank and Bernard. Founded in 1880, the business stayed in the family until 1960, and continued under the name until the 1980s. Another brother George worked for his father, John Bernard Mesker (1823-1899) in Evansville, Indiana, for J.B. Mesker and Son. Another brother, John Henry Mesker, worked there too. The senior John Bernard Mesker was a German immigrant who had trained as a metal worker in Cincinnati, formed his own business in 1844, and in 1874 started galvanizing iron for buildings as J.B. Mesker and Son. Oldest son Bernard left the firm thinking he would prospect for silver in the west, but instead traveled to St. Louis and formed Mesker Brothers Iron Works in 1880. From then until 1910 they produced a prodigious amount of formed sheet-metal building fronts, concentrating after that on metal windows and related items. George continued to work with his father until he established his own business in 1885, George L. Mesker and Company. George's business became the largest of its kind in the country, and continued to serve the façade or "front" market after 1910 when Mesker Brothers Iron Works shifted away from them.⁴ Both Mesker businesses made good use of attractive catalogs for marketing their lines of production, and dominated the American market.

The use of sheet metal for architectural ornament began in the 1870s, and in the following decades it supplanted iron as the metal of choice for most architectural work. One of steel's advantages is that it was stronger than

³ Richard Longstreth, The Buildings of Main Street, AltaMira Press, Walnut Creek, California: 2000, p.24-53.

⁴ "Three Brothers, Two Businesses Add Up to Architecture Galore," Historic Illinois, Vol.28, No.6, April 2006, p.2-7.

**United States Department of the Interior
National Park Service**

**NATIONAL REGISTER OF HISTORIC PLACES
CONTINUATION SHEET**

Section number 8 Page 4

**W. T. DAVIS BUILDING, MADISON,
MADISON COUNTY, FLORIDA**

iron and could be rolled and stamped into large ornamental sheets, by the end of the nineteenth century it replaced iron for cornices, building fronts and other architectural design features. Galvanized sheet metal provided an economical means of architectural ornamentation. This was particularly appealing to smaller communities such as Madison where professional architectural services were scarce or nonexistent. Because sheet metal was so light weight, it was suitable for both new and existing buildings of frame or masonry construction.

The Mesker Brothers made plate-steel columns for building fronts, relief molded sheet metal panels, and rock-faced sheet metal sidings, and well as galvanized iron columns that had been popular since the 1870s. The brothers had a catalog, "Mesker and Bro.: Manufacturers of Complete House Fronts," that featured suggested designs and shaped metal forms. Design motifs that referenced the Classical Revival predominated, and capitals, entablature, cornices, brackets, and lettered signs were elements featured. Step-by-step instructions as to how the owner of a building could assemble the façade exterior themselves were included.

For the pre-fabricated sheet metal materials to be attached to the exterior of buildings, wooden backings were attached to the building shell. When intricate wooden frames were required, the company provided a pattern so the wood could be sawn at the construction site. Once the wooden backing was installed, the metal panels were installed from the bottom up. Panels were shipped from St. Louis marked on the back to match detailed installation instructions. The panels were nailed into place and overlapped by the following metal sheet. They patented a technique for overlapping the edges so as to keep rain out and reduce the need for fasteners, thus allowing the metal to expand and contract.⁵

Between 1885 and 1896, the Mesker Brothers had 196 contracts listed in Florida. Of these sales, 26 were for "complete house fronts" like that of the W. T. Davis Building. The other jobs were for cornices, window hoods, storefront columns, or other less elaborate items in the Mesker Brothers catalog.

The Illinois Historic Preservation Agency maintains a database of Mesker projects statewide, with hopes of national recognition of their significance.

ARCHITECTURAL SIGNIFICANCE

The W.T. Davis Building is an excellent example of a masonry Commercial Style, Two-Part Block Building with original fixed-glass store fronts across the first story for retail occupants, and windows across the second story which was dedicated for other uses. The first story is divided into three bays defined by three original entrances with recessed double doors on the two ends, and a single door flush with the central bay. The

⁵ Darius Bryika, "Mesker Brothers: Behind the Iron Curtain," Mesker Brother Blog on WordPress.com, June 28, 2013, p.2.

**United States Department of the Interior
National Park Service**

**NATIONAL REGISTER OF HISTORIC PLACES
CONTINUATION SHEET**

Section number 8 Page 5

**W. T. DAVIS BUILDING, MADISON,
MADISON COUNTY, FLORIDA**

recessed entries are flanked by canted display windows and transoms. The retention of the original canted entries is rare among downtown commercial properties in Florida.

The galvanized sheet-metal façade on the W. T. Davis Building has several markers to confirm that it was constructed by the Mesker Brothers. Two markers read “Mesker Bro’s Front Builders St. Louis, Mo.” and another reads the same but is simpler in design. The front of the W. T. Davis building is one of few buildings that is covered with sheet metal in Florida, and the only building to combine cast iron columns and a pressed metal façade in Madison and adjacent counties. The W.T. Davis Building is a local landmark due to the elaborate level of ornamentation, and it retains a high degree of historic integrity.

**United States Department of the Interior
National Park Service**

**NATIONAL REGISTER OF HISTORIC PLACES
CONTINUATION SHEET**

Section number 9 Page 1 **W.T. DAVIS BUILDING, MADISON,
MADISON COUNTY, FLORIDA**

BIBLIOGRAPHY

Bryjka, Darius, "Three Brothers, Two Businesses Add Up to Business Galore," Historic Illinois, Vol.28, No.6, April 2006.

Brykja, Darius, "Mesker Brothers: Behind the Iron Curtain," Wordpress.com, June 28, 2013.

"Got Mesker?" Illinois Historic Preservation Agency, Springfield, Illinois, September 2008.

Florida Master Site File, "First Baptist Church of Madison," MD45, National Register nomination, 1978.

Florida Master Site File, "Jordan-Beggs House," MD184, National Register nomination, 1997.

Longstreth, Richard The Buildings of Main Street, AltaMira Press, Walnut Creek, California: 2000.

New Enterprise (newspaper), January 2, 1901.

Sanborn Maps, Madison, Florida, 1903; 1909; 1917.

Sarasota Herald-Tribune, March 6, 1958.

Who's Who and What to See in Florida; <http://fulltext.fcla.edu/DLData/SF/SFO>

**United States Department of the Interior
National Park Service**

NATIONAL REGISTER OF HISTORIC PLACES CONTINUATION SHEET

Section number 10 Page 1

**W. T. DAVIS BUILDING, MADISON,
MADISON COUNTY, FLORIDA**

LEGAL BOUNDARY DESCRIPTION

Block 27, Town of Madison, Lot Number 178 OR 485 PG 331

Parcel #00-00-00-3705-000-000

BOUNDARY JUSTIFICATION

This property is historically associated with the W.T. Davis Building.

**United States Department of the Interior
National Park Service**

**NATIONAL REGISTER OF HISTORIC PLACES
CONTINUATION SHEET**

Section number Photos Page 1 **W.T. DAVIS BUILDING, MADISON,
MADISON COUNTY, FLORIDA**

PHOTOGRAPHS

1. W. T. Davis Building, 196 South Range Street, Madison
2. Madison County, Florida
3. Ann McLeod
4. August 2014
5. Street view, east façade, facing west
6. Photo #1 of 10

Items 1-4 are the same for the remaining photographs

5. East façade store fronts, facing southwest
6. Photo #2 of 10

5. Second story, east facade, facing west
6. Photo #3 of 10

5. South elevation, southeast corner, facing northwest
6. Photo #4 of 10

5. South elevation entrance, facing north
6. Photo #5 of 10

5. Hallway in archives room, looking north
6. Photo #6 of 10

5. First floor, south half, museum space, looking west
6. Photo #7 of 10

5. Museum space, store front and entry, looking east
6. Photo #8 of 10

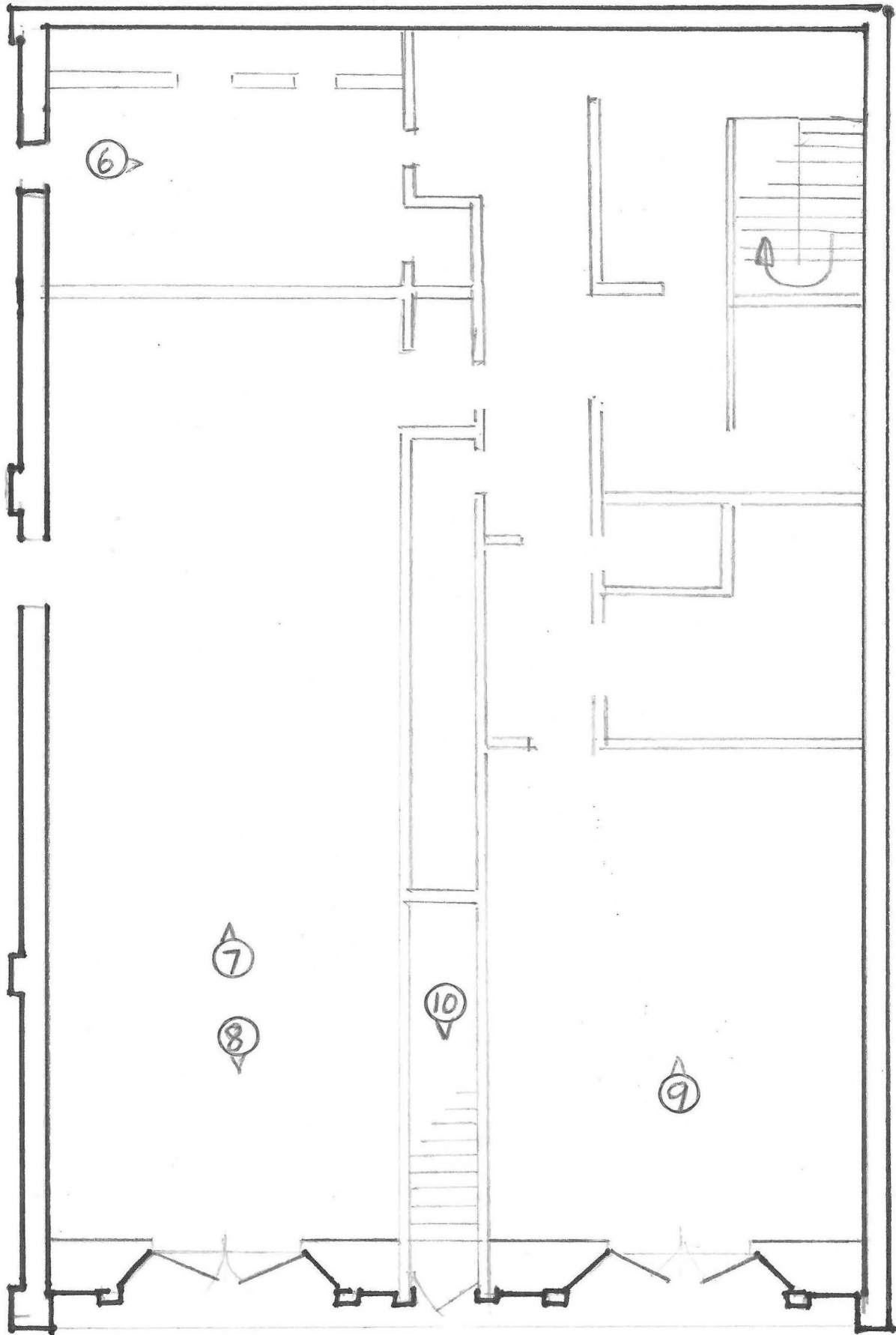
**United States Department of the Interior
National Park Service**

**NATIONAL REGISTER OF HISTORIC PLACES
CONTINUATION SHEET**

Section number Photos Page 2 **W.T. DAVIS BUILDING, MADISON,
MADISON COUNTY, FLORIDA**

5. First floor, north half, theater space, looking west
6. Photo #9 of 10

6. Central stairway to second floor, facing east
7. Photo #10 of 10



5

6

7

8

10

9

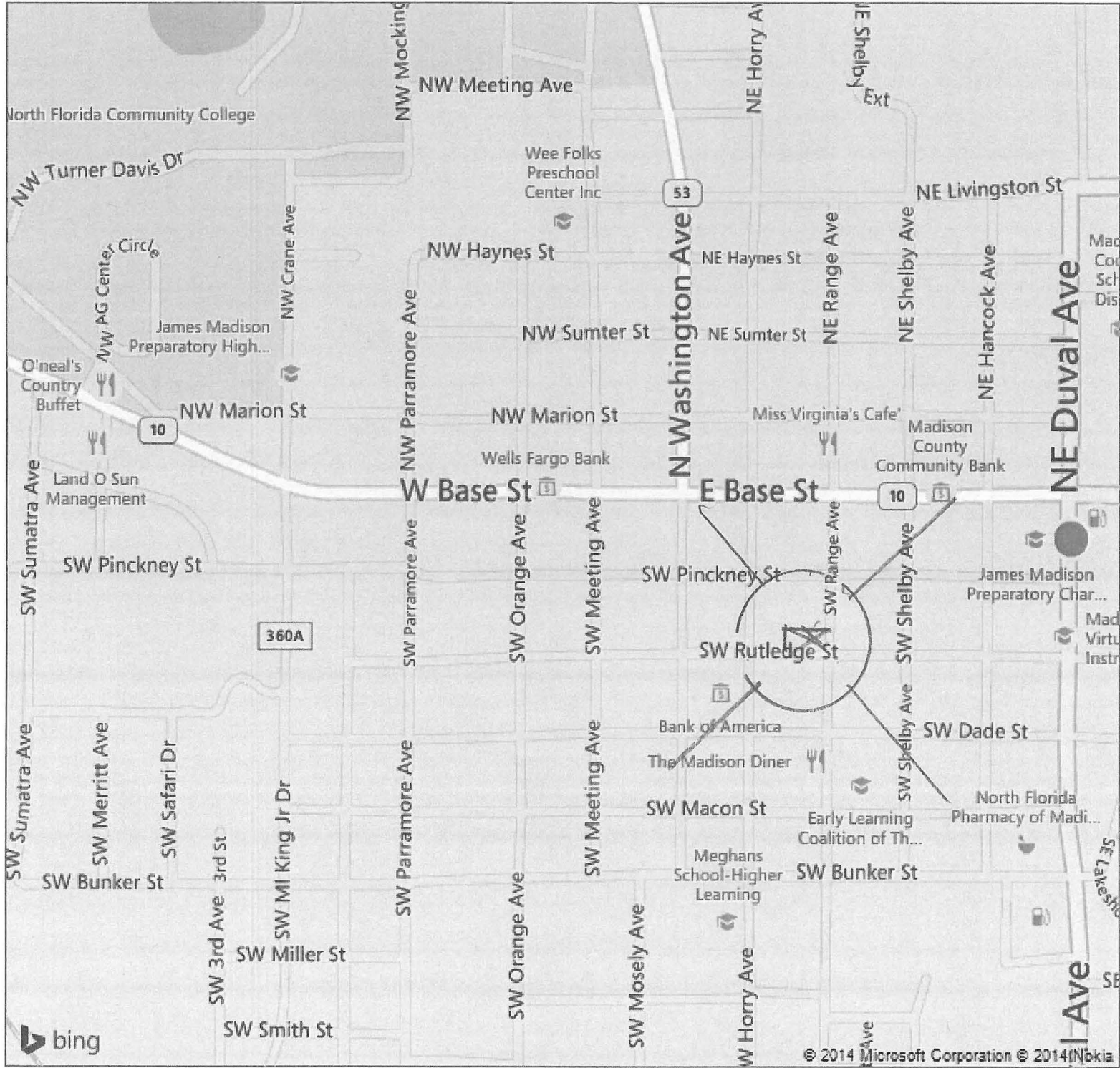
2

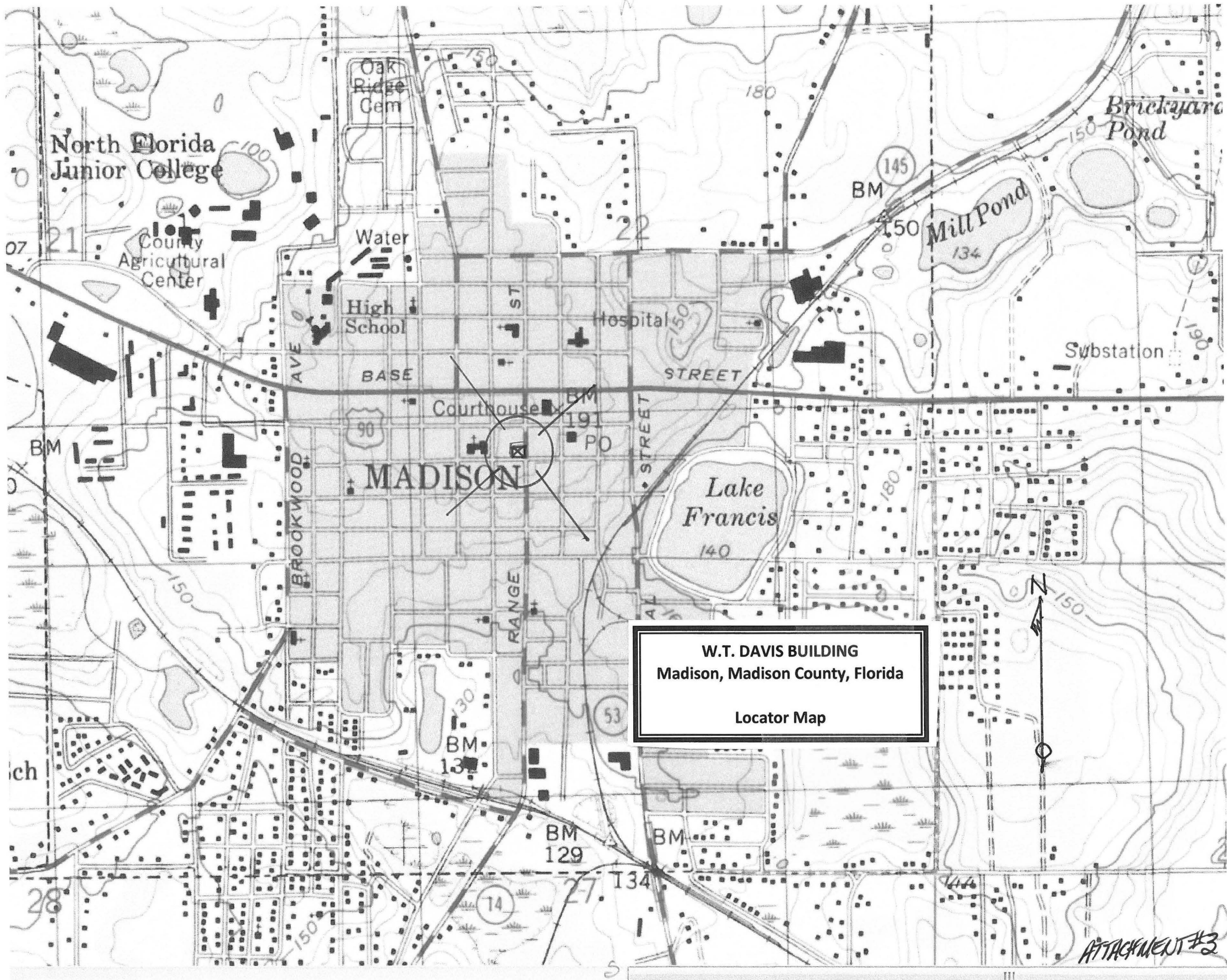
4

W.T. DAVIS BUILDING
Madison, Madison County, Florida
Floor Plan & Photo Diagram

3

1





W.T. DAVIS BUILDING
Madison, Madison County, Florida

Locator Map



W.T. DAVIS BUILDING
Madison, Madison County, Florida

Site Map





W. T. DAVIS

TREASURES MUSEUM

PHOTOGRAPHIC TREASURES
OF
MADISON COUNTY

RURAL AREA THEATER

LittlePir
850-2

TREASURES MUSEUM

PHOTOGRAPHIC TREASURES
OF
MADISON COUNTY 

The
RURAL AREA

THE
TREASURES
OF
MADISON COUNTY
MUSEUM

THE
TREASURES
OF
MADISON COUNTY
MUSEUM

200



W. T. DAVIS

THE GRAPHIC TREASURES
OF
MADISON COUNTY

RURAL AREA THEATER





ST. DAVID

THE
TREASURES
OF
MADISON COUNTY
MUSEUM

OPEN



Sorry We're
CLOSED



WARNING:
OUR FAMILY
TREE IS
FULL OF
NUTS





SON COUNTY
TARK

Give a Gift
of
Madison
History

For Sale

EXIT

THE
TREASURES
OF
MADISON COUNTY
MUSEUM

MARKET

AMERICAN RED CROSS
UNIFORMS







UNITED STATES DEPARTMENT OF THE INTERIOR
NATIONAL PARK SERVICE

NATIONAL REGISTER OF HISTORIC PLACES
EVALUATION/RETURN SHEET

REQUESTED ACTION: NOMINATION

PROPERTY NAME: Davis, W.T., Building

MULTIPLE NAME:

STATE & COUNTY: FLORIDA, Madison

DATE RECEIVED: 1/30/15 DATE OF PENDING LIST: 3/05/15
DATE OF 16TH DAY: 3/20/15 DATE OF 45TH DAY: 3/17/15
DATE OF WEEKLY LIST:

REFERENCE NUMBER: 15000074

REASONS FOR REVIEW:

APPEAL: N DATA PROBLEM: N LANDSCAPE: N LESS THAN 50 YEARS: N
OTHER: N PDIL: N PERIOD: N PROGRAM UNAPPROVED: N
REQUEST: Y SAMPLE: N SLR DRAFT: N NATIONAL: N

COMMENT WAIVER: N

ACCEPT RETURN REJECT 3.17.2015 DATE

ABSTRACT/SUMMARY COMMENTS:

Astoria Lighthouse

RECOM./CRITERIA Accept C

REVIEWER J. Gabbart DISCIPLINE _____

TELEPHONE _____ DATE _____

DOCUMENTATION see attached comments Y/N see attached SLR

If a nomination is returned to the nominating authority, the nomination is no longer under consideration by the NPS.



FLORIDA DEPARTMENT of STATE

RICK SCOTT
Governor

KEN DETZNER
Secretary of State

January 23, 2015

J. Paul Loether, Deputy Keeper and Chief,
National Register and National Historic Landmark Programs
Department of the Interior
1201 Eye Street, N.W., 8th Floor
Washington, D.C. 20005

Dear Mr. Loether:

The enclosed disks contain the true and correct copy of the nomination for the **W.T. Davis Building (FMSF #8MD187), in Madison County**, to the National Register of Historic Places. The related materials (digital images, maps, and site plan) are included.

Please do not hesitate to contact me at (850) 245-6333 if you have any questions or require any additional information.

Sincerely,

Desiree Estabrook
Historic Preservation Supervisor, Survey & Registration
Bureau of Historic Preservation

Division of Historical Resources

R.A. Gray Building • 500 South Bronough Street • Tallahassee, Florida 32399

850.245.6300 • 850.245.6436 (Fax) flheritage.com

Promoting Florida's History and Culture VivaFlorida.org

