



COLUMBUS HISTORIC DISTRICT COLUMBUS, INDIANA
PHOTO BY CYNTHIA D. LYNCH, JAN. 1980
NEGATIVE FILED AT PRESERVE TO ENJOY, 524 THIRD STREET,
COLUMBUS, IND.

PHOTO ONE of 29

Looking north on Washington Street from 2nd Street.
At the left is the Bartholomew County Courthouse (1-01)
and immediately north of it is Cesar Pelli's Courthouse
Center (2-01), a modern shopping mall. Buildings on
right form south end of the Washington Street commercial
area.

JAN 6 - 1982



COLUMBUS HISTORIC DISTRICT, COLUMBUS, INDIANA
PHOTO BY LAURA S. JONES; SEPT. 1979
NEGATIVE FILED AT PRESERVE TO ENJOY, 524 Third Street,
Columbus

PHOTO TWO

View south from 6th Street, looking down Washington at the Columbus commercial area. I.O.O.F. Building is first building at left (9-07, 1893). First building on right (4-06, 1897) was originally a U.S. Post Office from 1897 to 1910. At the end of Washington the 1874 Courthouse (1-01, 1874-74) is visible.

JAN 6 - 1982



COLUMBUS HISTORIC DISTRICT, COLUMBUS INDIANA
PHOTO BY CYNTHIA D. LYNCH, JAN. 1980
NEGATIVE FILED AT PRESERVE TO ENJOY, 524 THIRD STREET,
COLUMBUS IND.

PHOTO THREE

JAN 6 - 1982

View looking west on 5th Street from Franklin. At the left is Columbus City Hall, designed by Columbus architect Charles Spartzell. (7-05, 1895). The art deco style building at center of photo is the Rio Theater (8-02, 1930), and the large Queen Anne block with oriels is the outstanding Irwin Block (8-03, c.1890) which is perhaps the best commercial building of this style in Indiana, according to the Indiana Historic Sites & Structures Inventory.



COLUMBUS HISTORIC DISTRICT, COLUMBUS INDIANA
PHOTO BY CYNTHIA D. LYNCH, JAN.1980
NEGATIVE FILED AT PRESERVE TO ENJOY, 524 THIRD STREET,
COLUMBUS IN.

PHOTO FOUR

View looking northeast at the north side of 5th Street from Franklin. Italianate structure at left is the Storey Home, (19-01, 1864), renovated by the Miller family in the early 1970's for community use as a Visitor's Center. Contemporary building in center is I.M.Pei's Library (19-02, 1969), which faces a large plaza. At the far right is the Irwin Home (29-01, 1864 & 1910) in Arts & Crafts style which blends beautifully with Pei's modernism.

JAN 6 - 1982



COLUMBUS HISTORIC DISTRICT, COLUMBUS, INDIANA
PHOTO BY LAURA S. JONES, SEPT. 1979
NEGATIVE FILED AT PRESERVE TO ENJOY, 524 THIRD STREET,
COLUMBUS INDIANA

PHOTO FIVE

View looking west at the Irwin Home on 5th Street from the gardens. The Arts & Crafts exterior was designed by Henry Philips in 1910, a remodeling of an earlier structure. The formal gardens, also designed by Philips, were modeled after gardens in Pompeii. Tower at left is First Christian Church.

JAN 6 - 1982



COLUMBUS HISTORIC DISTRICT, COLUMBUS IN.
PHOTO BY CYNTHIA D. LYNCH, JAN. 1980
NEGATIVE FILED AT PRESERVE TO ENJOY, 524 THIRD STREET,
COLUMBUS, IN.

PHOTO SIX

View looking southwest at south side of 5th Street east of Franklin. Library plaza is in foreground; at extreme left is part of Henry Moore's "Large Arch" monumental sculpture (a gift from the Miller's); across 5th Street is Eliel Saarinen's church (18-01, 1942), the first non-historical ecclesiastical structure in America. The Courthouse tower rises in the center distance; on the right is the Columbus City Hall built in 1895.

JAN 6 - 1982



COLUMBUS HISTORIC DISTRICT, COLUMBUS INDIANA
PHOTO BY LAURA S. JONES, SEPT. 1979
NEGATIVE FILED AT PRESERVE TO ENJOY, 524 THIRD STREET,
COLUMBUS INDIANA

PHOTO SEVEN

View looking southwest at west side of Franklin from 7th. The Federal style Samuel Harris House (8-05, 1853) and the Italianate William O. Hogue House (8-06, 1870) at right were restored by the Miller family and today serve as commercial offices and an interior design studio. This pair of houses (known as "Franklin Square") are among the most elaborately restored in the District.

JAN 6 - 1982



COLUMBUS HISTORIC DISTRICT, COLUMBUS INDIANA
PHOTO BY LAURA S. JONES, SEPT. 1979
NEGATIVE FILED AT PRESERVE TO ENJOY, 524 THIRD STREET,
COLUMBUS INDIANA

PHOTO EIGHT

View looking north-northwest at west side of Franklin north of 8th. At left is Perry-Dunlap house (11-02, late 19th Century), with Eastlake style porch typical of work done in the 1890's. To the right are 2 Queen Anne houses (11-03 & 11-04); 11-03 was recently restored by its owner-occupants. Note ornamental iron fence.

JAN 6 - 1982



COLUMBUS HISTORIC DISTRICT, COLUMBUS INDIANA

PHOTO BY LAURA S. JONES, SEPT. 1979

NEGATIVE FILED AT PRESERVE TO ENJOY, 524 THIRD STREET,
COLUMBUS IN.

PHOTO NINE

View looking northeast on Franklin Street north of 9th. The brick Italianate structure is the Gent House (23-09, 1873). The ornate window hoods and decorative glass transoms make this residence one of the more unusual among the District Italianates. Note the ornamental iron fence. North of the Gent house is an early 20th century Colonial Revival (23-10, c. 1900) It is this mixing of architectural styles that is a hallmark of the District.

JAN 6 - 1982



COLUMBUS HISTORIC DISTRICT, COLUMBUS INDIANA
PHOTO BY LAURA S. JONES, SEPT.1979
NEGATIVE FILED AT PRESERVE TO ENJOY, 524 THIRD STREET,
COLUMBUS IN.

PHOTO TEN

View looking west at west side of Franklin Street north of 13th. Cross plan cottages, one extensively altered, contribute to more than 1/4th of residential structures in the District; Most constructed in the early 1880's. Photo shows the varying degrees of preservation or alteration that exist in the District. (15-09, 15-10, 15-11, & 15-12).

JAN 6 - 1982



COLUMBUS HISTORIC DISTRICT, COLUMBUS INDIANA
PHOTO BY CYNTHIA D. LYNCH, JAN. 1980
NEGATIVE FILED AT PRESERVE TO ENJOY, 524 THIRD ST.,
COLUMBUS IND.

PHOTO ELEVEN

View looking east at south side of 4th Street, east of Lafayette.

Brick building at right (27-06) is Railroadmen's Boarding House, which dates from the coming of the railroad in the mid-19th century. In center are two cross plan cottages with bay windows. Across Pearl st. is the Italaianate Hollowell House (40-11).

JAN 6 - 1982



COLUMBUS HISTORIC DISTRICT, COLUMBUS INDIANA
PHOTO BY CYNTHIA D. LYNCH, JAN. 1980
NEGATIVE FILED AT PRESERVE TO ENJOY, 524 THIRD ST.,
COLUMBUS INØ.

PHOTO TWELVE

View looking northeast at the east side of Lafayette,
north of intersection with 7th.

Italianate Adam Keller house (31-06) was the home of a
prominent Columbus builder and is still in the Keller
family. Lafayette Avenue in this block contains large
frame and brick residences, contrasting with the blocks
of small structures and close spacing.

JAN 6 - 1982



COLUMBUS HISTORIC DISTRICT, COLUMBUS INDIANA
PHOTO BY LAURA S. JONES, SEPT. 1979
NEGATIVE FILED AT PRESERVE-TO ENJOY, 524 THIRD STREET,
COLUMBUS, IND.

PHOTO THIRTEEN

View looking northwest at west side of Lafayette north of 7th. A less common type of pattern book house (21-04) popular in the 1870's. The lacy jig-sawn porch trim is quite unusual in its delicacy. Note the shallow set-back distance of houses from sidewalk.

JAN 6 - 1982



COLUMBUS HISTORIC DISTRICT, COLUMBUS INDIANA

PHOTO BY LAURA S. JONES, SEPT. 1979

NEGATIVE FILED AT PRESERVE TO ENJOY, 524 THIRD STREET,
COLUMBUS IND.

PHOTO FOURTEEN

View looking west-northwest at the west side of Lafayette north of 11th. Buildings 25-02, 25-03, 25-04. Cross plan cottage at far left is quite unusual in the degree of surface ornamentation; Free Classic style house in center and Queen Anne on far right typify the variety that is found in the district's residential area.

JAN 6 - 1982



COLUMBUS HISTORIC DISTRICT, COLUMBUS INDIANA
PHOTO BY BYNTHIA D. LYNCH, JAN. 1980
NEGATIVE FILED AT PRESERVE TO ENJOY, 524 THIRD ST.,
COLUMBUS, IND.

PHOTO FIFTEEN

View looking west at the north side of 7th street,
towards Lafayette Avenue.

Two fine Italianate residences grace the intersection
of 7th and Lafayette (31-06, 21-02). At the far left
the spire of the Victorian Gothic First Presbyterian
Church is visible (21-10).

JAN 6 - 1982



COLUMBUS HISTORIC DISTRICT, COLUMBUS INDIANA
PHOTO BY LAURA S. JONES, SEPT. 1979
NEGATIVE FILED AT PRESERVE TO ENJOY, 524 THIRD ST.,
COLUMBUS IND.

PHOTO SIXTEEN

View looking northeast at north side of 9th Street.
Three shotgun-type cottages. (33-01,33-02, 33-03). This
is the second most common type of small house in the
District, with cross plan cottage most prevalent. These
small homes with one door and one window on the front
facade were once very common.

JAN 6 - 1982



COLUMBUS HISTORIC DISTRICT, COLUMBUS INDIANA
PHOTO BY LAURA S. JONES, SEPT. 1979
NEGATIVE FILED AT PRESERVE TO ENJOY, 524 THIRD ST.,
COLUMBUS IND.

PHOTO SEVENTEEN

View looking northeast at the east side of Peral street
south of 8th.

Italianate house in foreground (44-15) and at far left
(44-17) are typical of the more substantial homes built
during the 1870's and 1880's by families of means. 20th
century porches have been added to most of them.

JAN 6 - 1982



COLUMBUS HISTORIC DISTRICT, COLUMBUS, INDIANA
PHOTO BY LAURA S. JONES, SEPT. 1979
NEGATIVE FILED AT PRESERVE TO ENJOY, 524 THIRD STREET,
COLUMBUS, IND.

PHOTO EIGHTEEN

View south on Pearl Street from 8th street. At extreme right is the Old Washington School (31-05, 1887) designed by Charles Sparrell as Columbus' first High School. The structure, long vacant, has recently been purchased for renovation into "luxury" apartments. At the south end of Pearl is the campus of Central Junior High School.

JAN 6 - 1982



COLUMBUS HISTORIC DISTRICT, COLUMBUS INDIANA
PHOTO BY CYNTHIA D. LYNCH, JAN. 1980
NEGATIVE FILED AT PRESERVE TO ENJOY, 524 THIRD ST.,
COLUMBUS IND.

PHOTO NINETEEN

View looking southwest from 13th Street at the west side of Pearl.

Two highly ornamental cross-plan cottages (36-03, 36-04) display the degree of complexity that intersecting gables can reach. To the far left, an outstanding Free Classic style residence (36-02) stands.

JAN 6 - 1982



COLUMBUS HISTORIC DISTRICT, COLUMBUS INDIANA
PHOTO BY LAURA S. JONES, SEPT. 1979
NEGATIVE FILED AT PRESERVE TO ENJOY, 524 THIRD ST.,
COLUMBUS IND.

PHOTO TWENTY

View looking north up Pearl Street from 14th.
Photo shows the physical barrier of the railroad tracks
which form the northern boundary of Franklin, Lafayette
and Pearl Streets. Park-like tree shaded streets are
common in the district.

JAN 6 - 1982



COLUMBUS HISTORIC DISTRICT, COLUMBUS INDIANA
PHOTO BY CYNTHIA D. LYNCH, JAN. 1980
NEGATIVE FILED AT PRESERVE TO ENJOY, 524 THIRD STREET
COLUMBUS IN.

PHOTO TWENTY ONE

View looking north west at the north side of 7th, west of Pearl. Exuberant structure at right is the Frank Coats house (44-03, c.1895), the finest Queen Anne residence in the District. Coats was a partner in the prosperous construction firm Dunlap & Coats. Brick house at far left (44-01, c.1865) is the only gothic revival residence of this size, and was built by Col. John A. Keith, who organized the 21st Indiana regiment in the Civil War.

JAN 6 - 1982



COLUMBUS HISTORIC DISTRICT, COLUMBUS INDIANA
PHOTO BY CYNTHIA D. LYNCH, JAN 1980
NEGATIVE FILED AT PRESERVE TO ENJOY, 524 THIRD ST.,
COLUMBUS IND.

PHOTO TWENTY TWO

View looking north up Sycamore street from south side
of Third.

Two story frame structure (52-01) dates from the 1890's
and is fortunate to retain its decorative siding material.
Looking up Sycamore, one can see the spires from st.
Peter's and St. Bartholomew Churches (41-10, 56-10).

JAN 6 - 1982



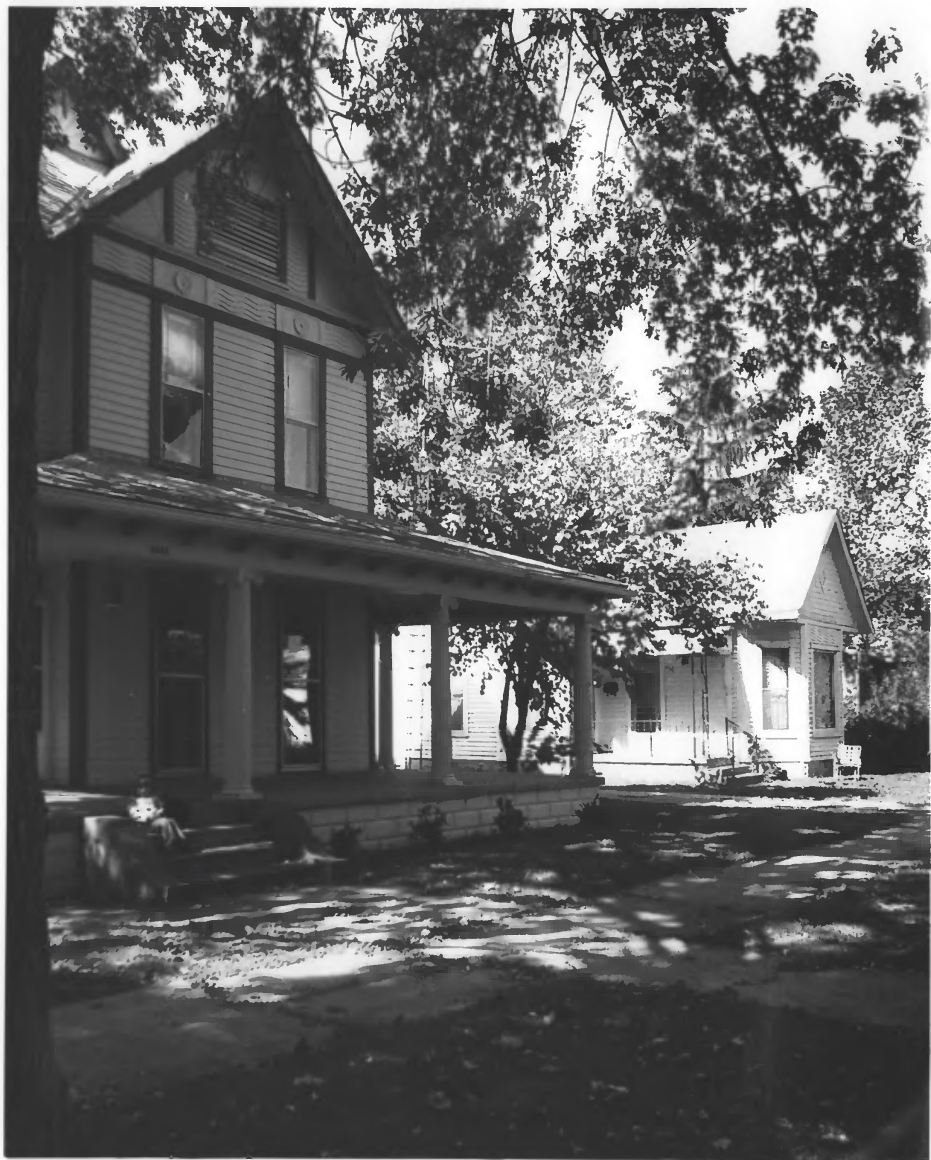
COLUMBUS HISTORIC DISTRICT, COLUMBUS INDIANA
PHOTO BY LAURA S. JONES, SEPT. 1979
NEGATIVE FILED AT PRESERVE TO ENJOY, 524 THIRD ST.,
COLUMBUS IND.

PHOTO TWENTY THREE

View looking southeast at southeast corner of 5th and Sycamore.

St. Peter's Lutheran Church (53-03, 1903) and, to the far left, St. Peter's School (53-04, 1940). The Victorian Gothic church was one of the last great churches to be constructed in a historic style in the District. The school, beautifully detailed in stone and glazed brick, forms the eastern edge of the district at 5th street.

JAN 6 - 1982



COLUMBUS HISTORIC DISTRICT, COLUMBUS INDIANA
PHOTO BY LAURA S. JONES, SEPT. 1979
NEGATIVE FILED AT PRESERVE TO ENJOY, 524 Third St.,
COLUMBUS IND.

PHOTO TWENTY FOUR

View looking northwest at the west side of Sycamore north of 10th Street.

House at left (47-03, c.1885) is a fine example of a large and well-maintained Queen Anne. To the right is another decorated cross plan cottage.



COLUMBUS HISTORIC DISTRICT, COLUMBUS INDIANA
PHOTO BY LAURA S. JONES, SEPT. 1979
NEGATIVE FILED AT PRESERVE TO ENJOY, 524 THIRD ST.,
COLUMBUS IND.

PHOTO TWENTY FIVE

View looking southeast at east side of Sycamore south of 11th. Small commercial building was a grocery (59-14, 1884) but is today operated as a clothing store. The frame building is nearly unchanged from the original; small shops like this occur throughout the residential areas of the district. Two types of cross plan cottages are shown, the earlier, flat facade type and the later type with "cut away" corners (see description).

JAN 6 - 1982



COLUMBUS HISTORIC DISTRICT, COLUMBUS INDIANA
PHOTO BY LAURA S. JONES, SEPT. 1979
NEGATIVE FILED AT PRESERVE TO ENJOY, 524 THIRD ST.,
COLUMBUS IND.

PHOTO TWENTY SIX

View looking west at the west side of Sycamore north of 12th. Well preserved row of shotgun-type houses. Although altered with asbestos siding, these tiny residences retain their ornamental trim and the repeated rhythm of the closely-spaced forms continues to set the character of the streetscape.

JAN 6 - 1982



COLUMBUS HISTORIC DISTRICT, COLUMBUS INDIANA
PHOTO BY LAURA S. JONES, SEPT. 1979
NEGATIVE FILED AT PRESERVE TO ENJOY, 524 THIRD ST.,
COLUMBUS IND.

PHOTO TWENTY SEVEN

View looking west at the west side of Chestnut, north of 6th. Two outstanding structures: the Greek Revival cottage in center (55-05, 1867) is one of very few such remaining structures from the middle of the century. This cottage is well-preserved with all stylistic elements intact. To the right is an ornate shotgun-type residence (55-06) with an exuberant porch.

JAN 6 - 1982



COLUMBUS HISTORIC DISTRICT, COLUMBUS INDIANA
PHOTO BY LAURA S. JONES, SEPT. 1979
NEGATIVE FILED AT PRESERVE TO ENJOY, INC. 524 3RD,
COLUMBUS IND.

PHOTO TWENTY EIGHT

View looking southeast at east side of Chestnut south
of 8th.

Small cottages flank a larger carpenter-builder structure
on Chestnut. (64-08, 64-09, 64-10) The many-gabled
structures create an unmistakable rythm that pervades
most of the residential areas.

JAN 6 - 1982

WASHINGTON STREET, WEST SIDE

Keyed to Continuation Sheets
2 & 3.

PROOF SHEET /

JAN 6 " 1982

WASHINGTON STREET, WEST SIDE



W. Side Washington

PROOF SHEET 2

WASHINGTON STREET, EAST SIDE

Keyed to Continuation Sheets
4 & 5.

JAN 6 - 1932



5-02 C



5-03 C



5-04 AC



5-05 AC

WOODEN SAFETY FILM SHEET

WOODEN SAFETY FILM SHEET

WOODEN SAFETY FILM SHEET

WOODEN SAFETY FILM SHEET

WOODEN SAFETY FILM SHEET



WOODEN SAFETY FILM SHEET

WOODEN SAFETY FILM SHEET

WOODEN SAFETY FILM SHEET

WOODEN SAFETY FILM SHEET

WOODEN SAFETY FILM SHEET

WOODEN SAFETY FILM SHEET



WOODEN SAFETY FILM SHEET

WOODEN SAFETY FILM SHEET

WOODEN SAFETY FILM SHEET

WOODEN SAFETY FILM SHEET

WOODEN SAFETY FILM SHEET

WOODEN SAFETY FILM SHEET

WOODEN SAFETY FILM SHEET

WOODEN SAFETY FILM SHEET

WOODEN SAFETY FILM SHEET

WOODEN SAFETY FILM SHEET

WOODEN SAFETY FILM SHEET

WOODEN SAFETY FILM SHEET

WOODEN SAFETY FILM SHEET

WOODEN SAFETY FILM SHEET

WOODEN SAFETY FILM SHEET

WOODEN SAFETY FILM SHEET

WOODEN SAFETY FILM SHEET

WOODEN SAFETY FILM SHEET



WOODEN SAFETY FILM SHEET

WOODEN SAFETY FILM SHEET

WOODEN SAFETY FILM SHEET

WOODEN SAFETY FILM SHEET

WOODEN SAFETY FILM SHEET

WOODEN SAFETY FILM SHEET

WOODEN SAFETY FILM SHEET

WOODEN SAFETY FILM SHEET

WOODEN SAFETY FILM SHEET

WOODEN SAFETY FILM SHEET

WOODEN SAFETY FILM SHEET

WOODEN SAFETY FILM SHEET



WOODEN SAFETY FILM SHEET

WOODEN SAFETY FILM SHEET

WOODEN SAFETY FILM SHEET

WOODEN SAFETY FILM SHEET

WOODEN SAFETY FILM SHEET

WOODEN SAFETY FILM SHEET



→ 31A

→ 32

→ 32A

→ 33

→ 33A

→ 34

→ 34A

→ 35

WASHINGTON STREET, EAST SIDE
Keyed to Continuation Sheet 6

PROOF SHEET 4 JAN 6 - 1982



→ 31A

→ 32

→ 32A

→ 33

→ 33A

→ 34

→ 34A

→ 35

KODAK SAFETY FILM 5063

KODAK SAFETY FILM 5063

KODAK SAFETY FILM 5063

KODAK SAFETY FILM 5063

KODAK SAFETY FILM 5063



37-11



37-11 C



38-06
C



38-06



38-07



38-07 C

KODAK SAFETY FILM 5063

KODAK SAFETY FILM 5063

LAFAYETTE AVENUE, EAST SIDE
LAFAYETTE
 Keyed to Continuation Sheet 22
 PROOF SHEET 17
 JAN 6 - 1982



38-08 C



38-08



38-09



38-09 C



TROND STREET, NORTH SIDE
Refer to Continuation Sheet 42
PROOF SHEET 39
JAN 6 - 1902



FOURTH STREET, SOUTH SIDE

Keyed to Continuation Sheet 46

PROOF SHEET 43

JAN 6 - 1982



FIFTH STREET, NORTH SIDE

Keyed to Continuation Sheet 47

PROOF SHEET 44

JAN 6 - 1962



FIFTH STREET, SOUTH SIDE

Keyed to Continuation Sheet 48 -
49
PROOF SHEET 45

JAN 8 - 1922



SEVENTH STREET, NORTH SIDE
Keyed to Continuation Sheet 51
PROOF SHEET 47

JAN 6 - 1982



SEVENTH STREET, SOUTH SIDE
Keyed to Continuation Sheet 52
PROOF SHEET 48

JAN 6 - 1982



EIGHTH STREET, NORTH SIDE

Keyed to Continuation Sheet 53

PROOF SHEET 49

JAN 6 - 1982



EIGHTH STREET, SOUTH SIDE
Keyed to Continuation Sheet 54
PROOF SHEET 50

JAN 6 - 1962



NINTH STREET, NORTH SIDE

Keyed to Continuation Sheet 55

PROOF SHEET 51

JAN 6 - 1982



NINTH STREET, SOUTH SIDE

Keyed to Construction Sheet 55

PROOF SHEET 52

AS B - 1982



TENTH STREET, NORTH SIDE
Keyed to Continuation Sheet 57
PROOF SHEET 53

JAN 6 - 1982



TENTH STREET, SOUTH SIDE

Keyed to Continuation Sheet 58

PROOF SHEET 54

JAN 6 - 1902



58-16-C



58-17



58-17



58-18-C



58-19



58-15-C

ELEVENTH STREET, NORTH SIDE

Keyed to Continuation Sheet 59

Proof Sheet 55

JAN 8 - 1952



ELEVENTH STREET, SOUTH SIDE

Keyed to Continuation Sheet 59

PROOF SHEET 56

JAN 6 - 1922



TWELFTH STREET, SOUTH SIDE

Keyed to Construction Sheet 63

PROOF SHEET 57

JAN 5 - 1912



THIRTEENTH STREET, NORTH SIDE
Keyed to Continuation Sheet 61

PROOF SHEET 58



THIRTEENTH STREET, SOUTH SIDE
Keyed to Continuation Sheet 61



FOURTEENTH STREET, NORTH SIDE
Continuation Sheet 61

(Below)

FOURTEENTH STREET, SOUTH SIDE
Continuation Sheet 61 JAN 6 - 1982

