



WEIG
LIM
10
TON

East Riley Creek Bridge

Belleville, Kansas

Larry Joehms

May 26, 1986

Kansas State Historical Society

West approach looking east

1 of 8



East Riley Creek Bridge

Belleville, Kansas

Harry Gochins

May 26, 1986

Kansas State Historical Society

East approach looking west

2 of 8



East Riley Creek Bridge

Belleville, Kansas

Larry Johnson

May 26, 1986

Kansas State Historical Society

East approach looking west

3y8

A black and white photograph showing a close-up of a metal beam. The beam is dark and has a textured surface. In the center, the name "JONES & LAUGHLINS" is stamped in a bold, sans-serif font. The beam is part of a larger structure, with other metal components visible above and below it. The background is bright and out of focus.

JONES & LAUGHLINS

East Riley Creek Bridge
Bellville, Kansas

Larry Johnson

May 26, 1986

Kansas State Historical Society

Chord detail

4 of 8

A black and white photograph showing a close-up of a heavy metal beam. The beam is dark and has a rough, textured surface. A large, rounded rivet is visible on the left side of the beam. To the right of the rivet, a metal bracket or support is attached to the beam. The background is blurred, showing some light-colored, possibly metallic, structures. The text "SMITH & LAUGHLINS" is embossed on the beam, oriented vertically.

SMITH & LAUGHLINS

East Riley Creek Bridge

Belleville, Kansas

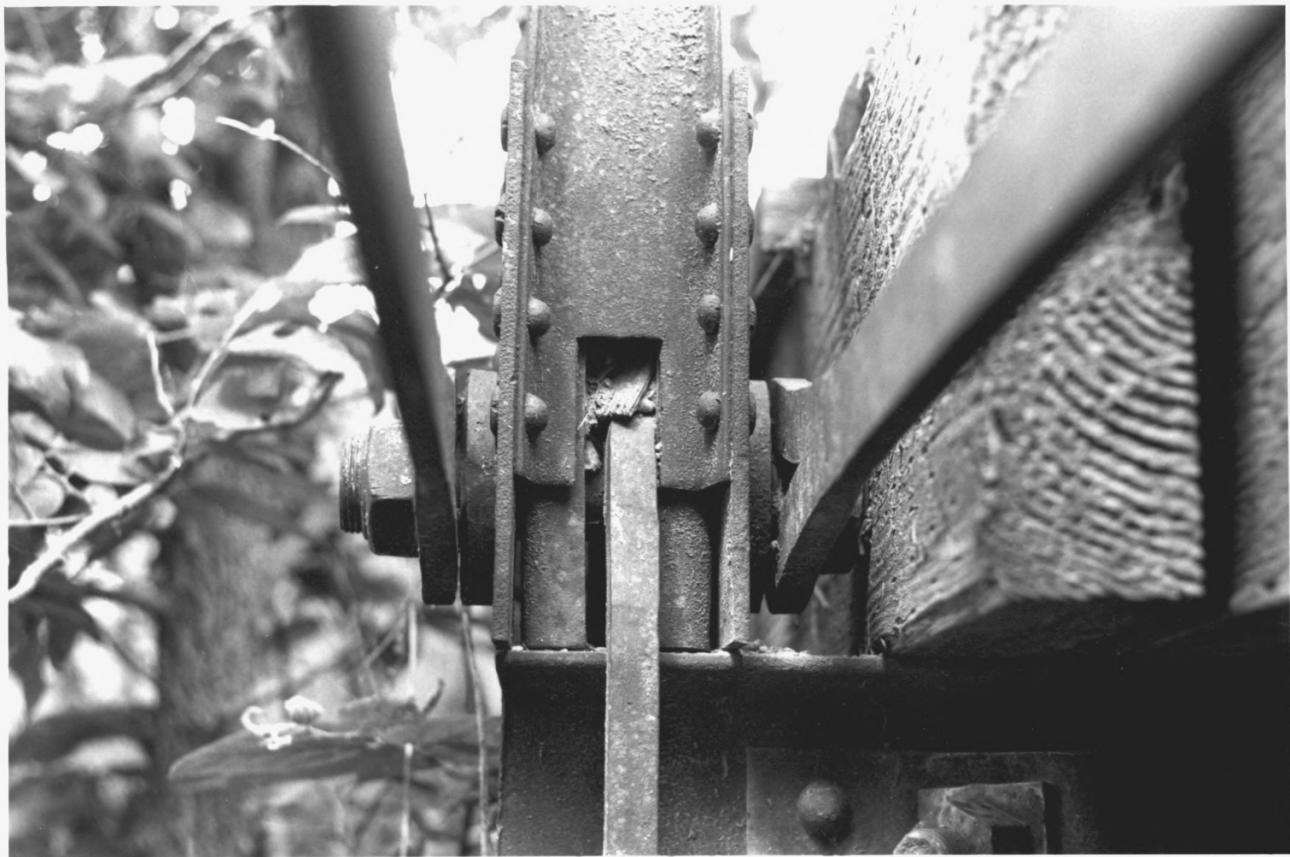
Harry Joachim

May 26, 1986

Kansas State Historical Society

Chord detail

5 of 8



East Riley Creek Bridge

Bellville, Kansas

Larry Johnson

May 26, 1986

Kansas State Historical Society

Bottom Chord Connector

6 of 8



East Riley Creek Bridge

Bellville, Kansas

Larry Johnston

May 26, 1986

Kansas State Historical Society

of Chad Connor

7 of 8



East Riley Creek Bridge

Bellville, Kansas

Larry Johnson

May 20, 1972

Kansas State Historical Society

Bottom Street Connection

Page 8