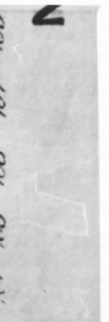
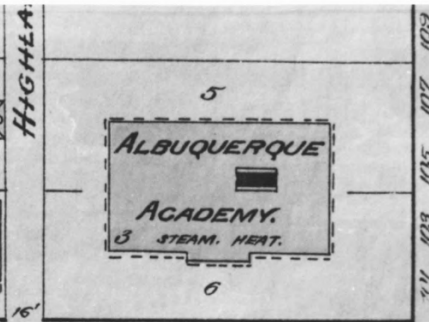
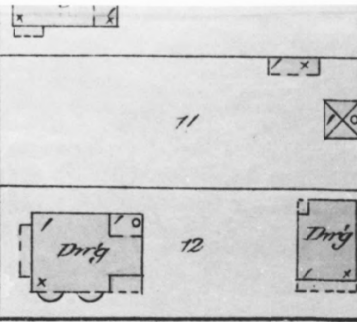
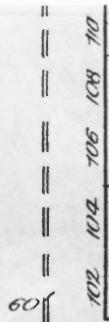
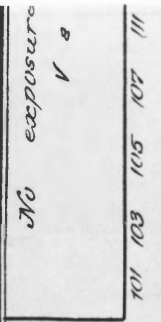
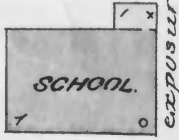
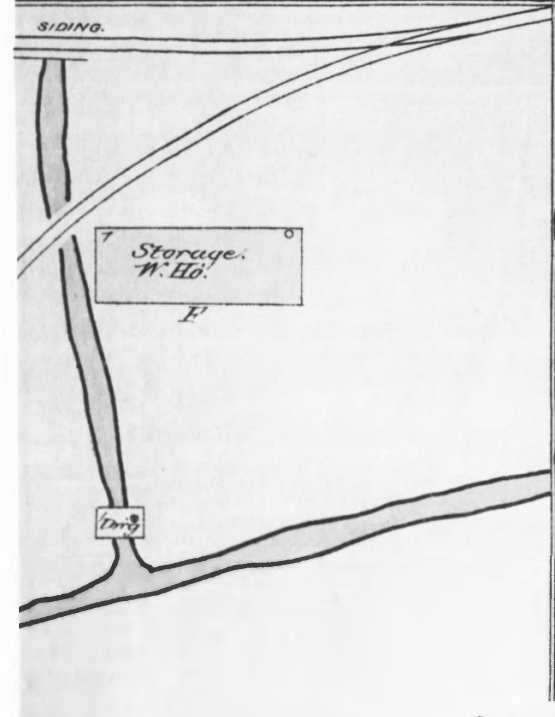


N. of San Felipe Hotel.

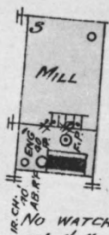


6TH ST

No exposure

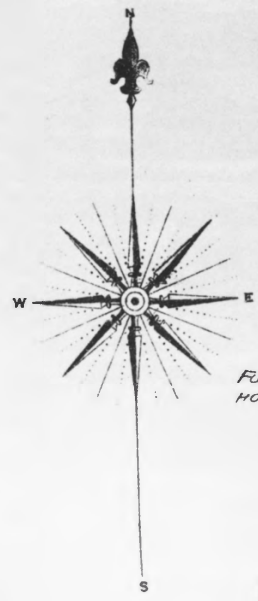


No exposure



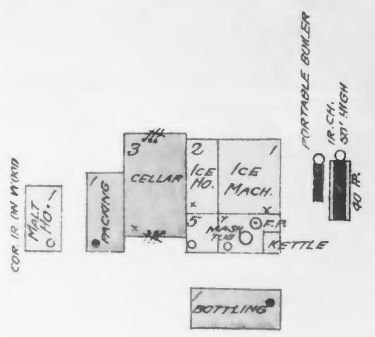
CHAS. MAUSART'S MILL.

- 3RD ST. SHAFTING & BINS.
 - 1ST FL'R. 4 SETS ROLLS.
 - 1 RUN STONE.
 - 1 EUREKA SEPARATOR.
 - 2ND FL'R. 1 MIDDINGS PURIFIERS.
 - 3 FLOUR DRESSERS.
 - 3RD " 1 SCALPING MACH.
 - 5 FLOUR DRESSERS.
- NO WATCHMAN. FUEL: COAL. LIGHTS: ENCLOSED LANTERNS.
50' 1 1/2" HOSE, WATER PUMPED FROM WELL. F.P. IN ENG. RM.



SOUTH WESTERN BREWING & ICE CO.

FUEL: COAL. LARD OIL LIGHTS. NO WATCHMAN. WATER FROM WELL. HOSE TO REACH ALL PARTS OF BREWERY.



Map Division
29

Southwestern Brewery & Ice Co.
Albuquerque, N. M.

Richard Federici April 29, 1977
State Planning Office
Santa Fe, N. M.

Reproduction of section of
Albuquerque fire insurance
map Sanborn & Co., 1891.

MAR 30 1978 MAY 19 1977

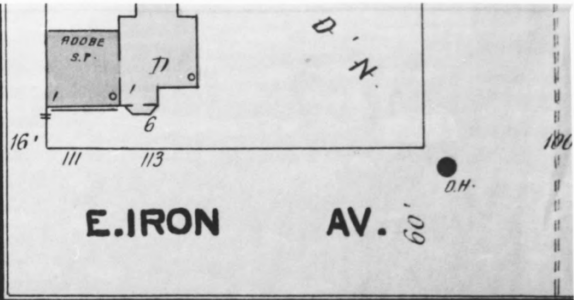
Bernalillo County

HEAT: STOVES. LIGHTS: OIL & GAS.

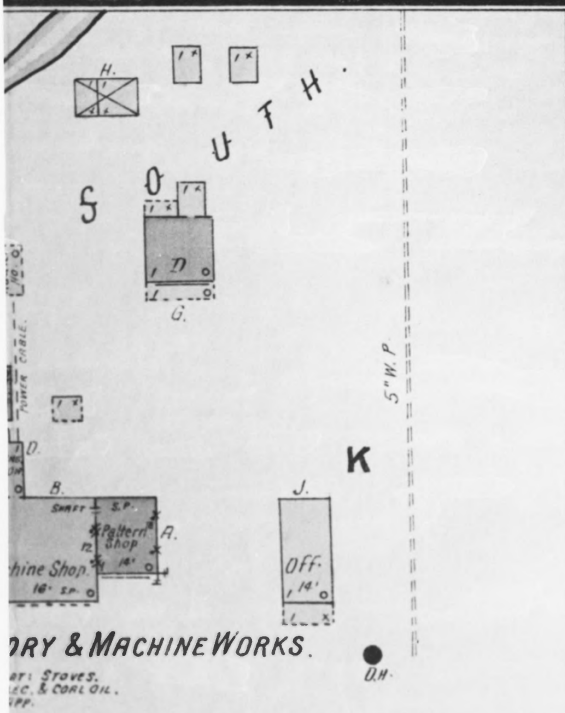
ARMUJO & BRO'S ADD.
23

NEW YORK

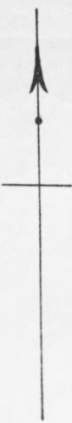
ROAD.
One Mile E. of R.R. Depot.



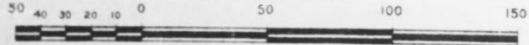
X P O S U R E . 60'



2 D.H.
5\" W.P.



Scale of Feet.

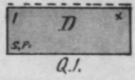
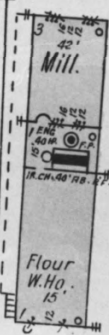


N O E X P O S U R E .

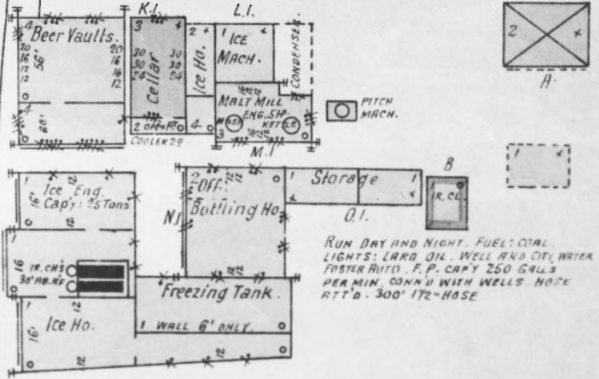
CH. MAUSARD'S MILL.

NO WATCHMAN. FUEL: COAL. LIGHTS:
ENCLOSED LANTERNS. WATER PUMPED
FROM WELL. F.P. 50\"/>

- BST: SHAFING AND BINS.
- 1ST: 4 SETS ROLLS. 1 FEED MILL.
1 RUN STONE. 1 FLOUR PACKER.
1 EUREKA SEPARATOR.
- 2ND: 1 CASE PURIFIER.
- 3RD: 2 FLOUR DRESSERS.
1 SCALPING MACHINE.
2 FLOUR DRESSERS.
1 GYRATOR.



SOUTH-WESTERN BREWING & ICE CO.



Map Division
29
Library of Congress

RUN DAY AND NIGHT. FUEL: COAL.
LIGHTS: LAMP OIL. WELL AND CITY WATER
FILTER AUTO. F.P. CAPY 250 GALLS
PER MIN. CONDU WITH WELLS. HOSE
ATT'D. 300\"/>

N O E X P O S U R E .

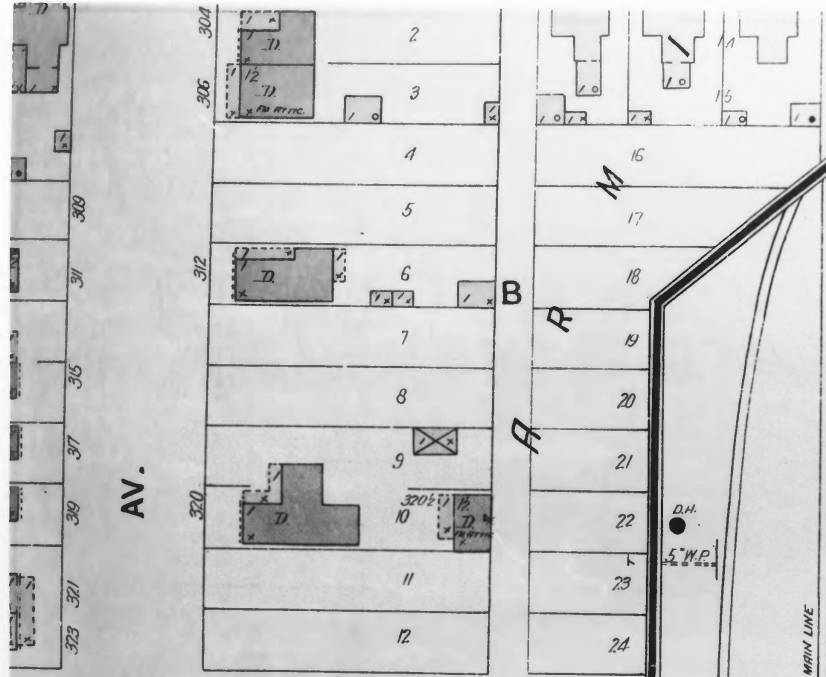
Southwestern Brewery & Ice co.
Albuquerque, N. M.
Richard Federici April 29, 1977
State Planning Office
Santa Fe, N. M.

Reproduction of section of
Albuquerque fire insurance
(map), Sanborn & Co., 1902.

MAR 30 1978

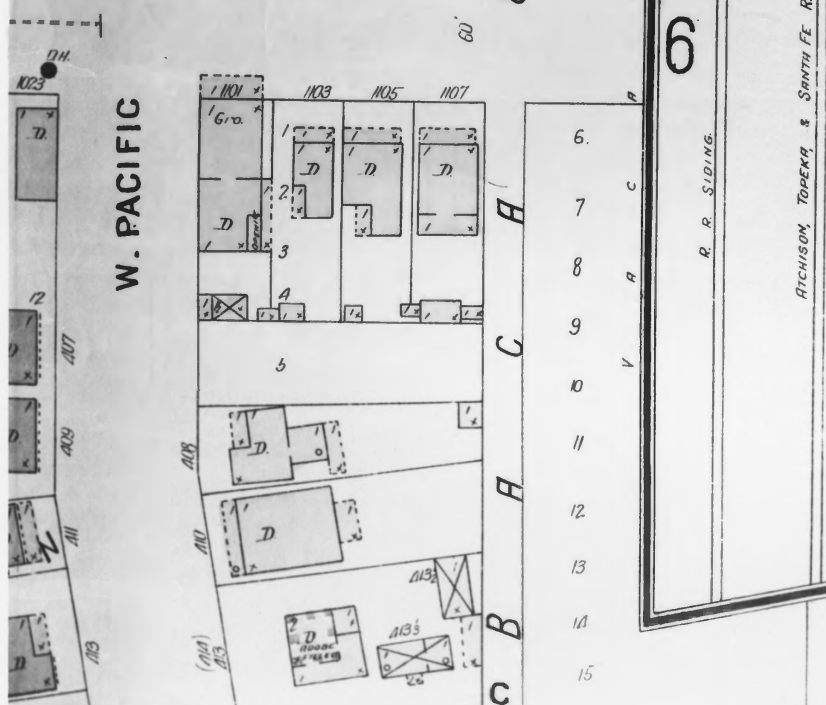
MAY 19 1977

Bernalillo County



AV.

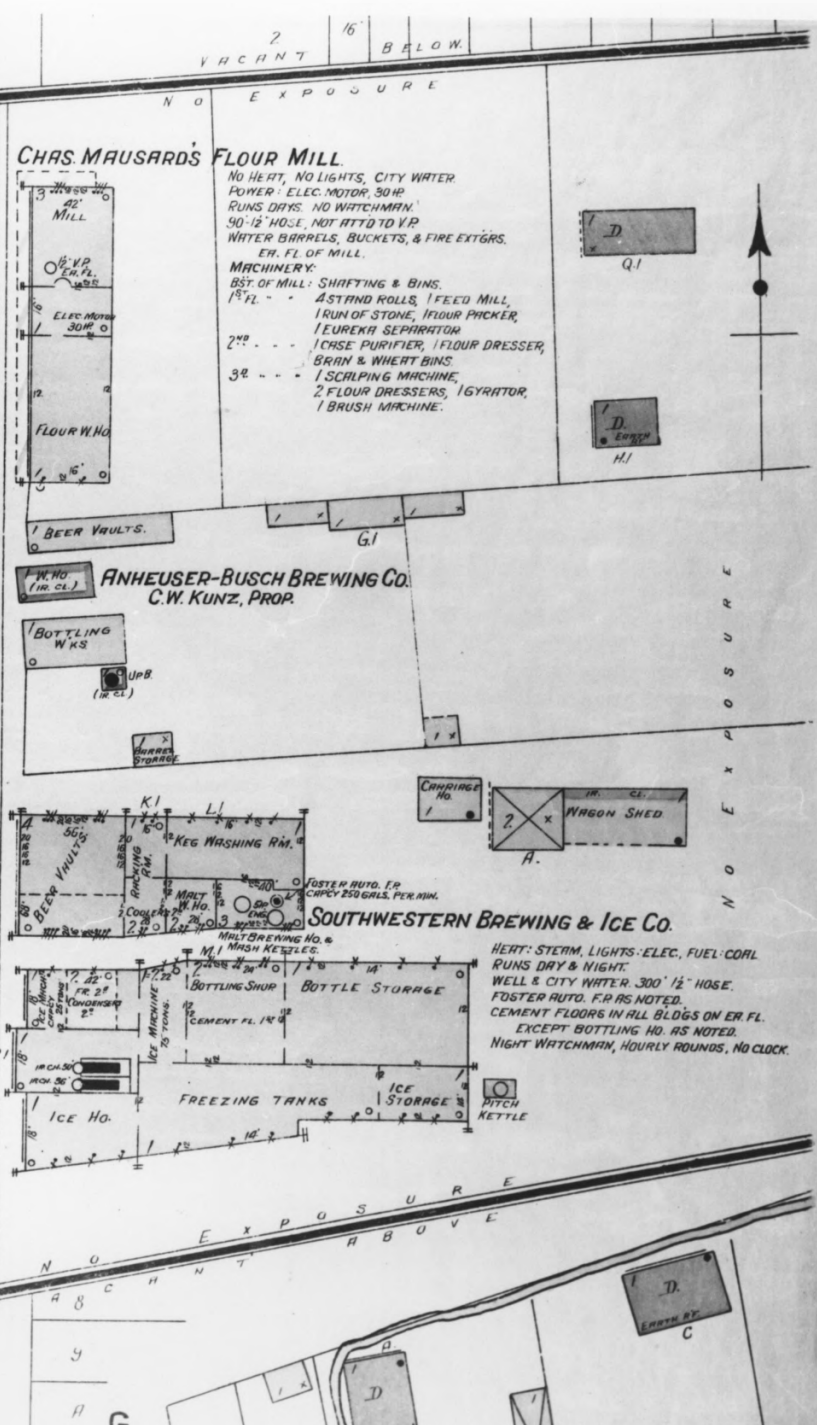
W. PACIFIC



(NICI)

ATCHISON, TOPEKA, & SANTA FE R.R. MAIN LINE

R. R. SIDING



Southwestern Brewery & Ice Co.
Albuquerque, N. M.

Richard Federici April 29, 1977
State Planning Office
Santa Fe. N. M.

Reproduction of section of
Albuquerque fire insurance
map, Sanborn & Co., 1908.

MAR 30 1978 MAY 19 1977

Bernalillo County



HOME OF GEORGIA BEER

SOUTHERN
SERVES
THE SOUTH

ENGINE HOUSE

Southwestern Brewery & Ice Co.
Albuquerque, N. M.

Richard Federici June 4, 1973
State Planning Office

Santa Fe, N. M.

MAR 30 1978

View of stock house
looking southeast.

Photo. #1. **5** MAY 19 1977

Bernalillo County



S.W. BREWERY & ICE CO.
1899

HOME OF GEORGIA BEER

LENGTH BETWEEN BULKHEADS 42 8

HOUSE

Southwestern Brewery & Ice Co.
Albuquerque, N. M.
Richard Federici June 4, 1973
State Planning Office

MAY 19 1977

Santa Fe, N. M.
View of stock house
looking northeast.

Photo. #2. **5**

MAR 30 1978

BERNALILLO

County



Southwestern Brewery & Ice Co.
Albuquerque, N. M.

Richard Federici June 4, 1973
State Planning Office

MAR 30 1978

Santa Fe, N. M.

View of brew house and
stock house looking west.

Photo. #3. 85

MAY 19 1977

Bernalillo County



ENGINE HOUSE

Southwestern Brewery & Ice Co.
Albuquerque, N. M.
Richard Federici Feb. 2, 1975
State Planning Office

MAR 30 1978

Santa Fe, N. M.

View of engine house
looking east.

Photo. #4. 25

MAY 19 1977

BERNALILLO County



Southwestern Brewery & Ice Co.
Albuquerque N. M.

Richard Federici Feb. 2, 1975
State Planning Office

~~SANTA FE, N. M.~~

View of ice house, boiler
house, engine house and
stock house looking northeast.

Photo. #5. 5 MAY 19 1977

Bernalillo County