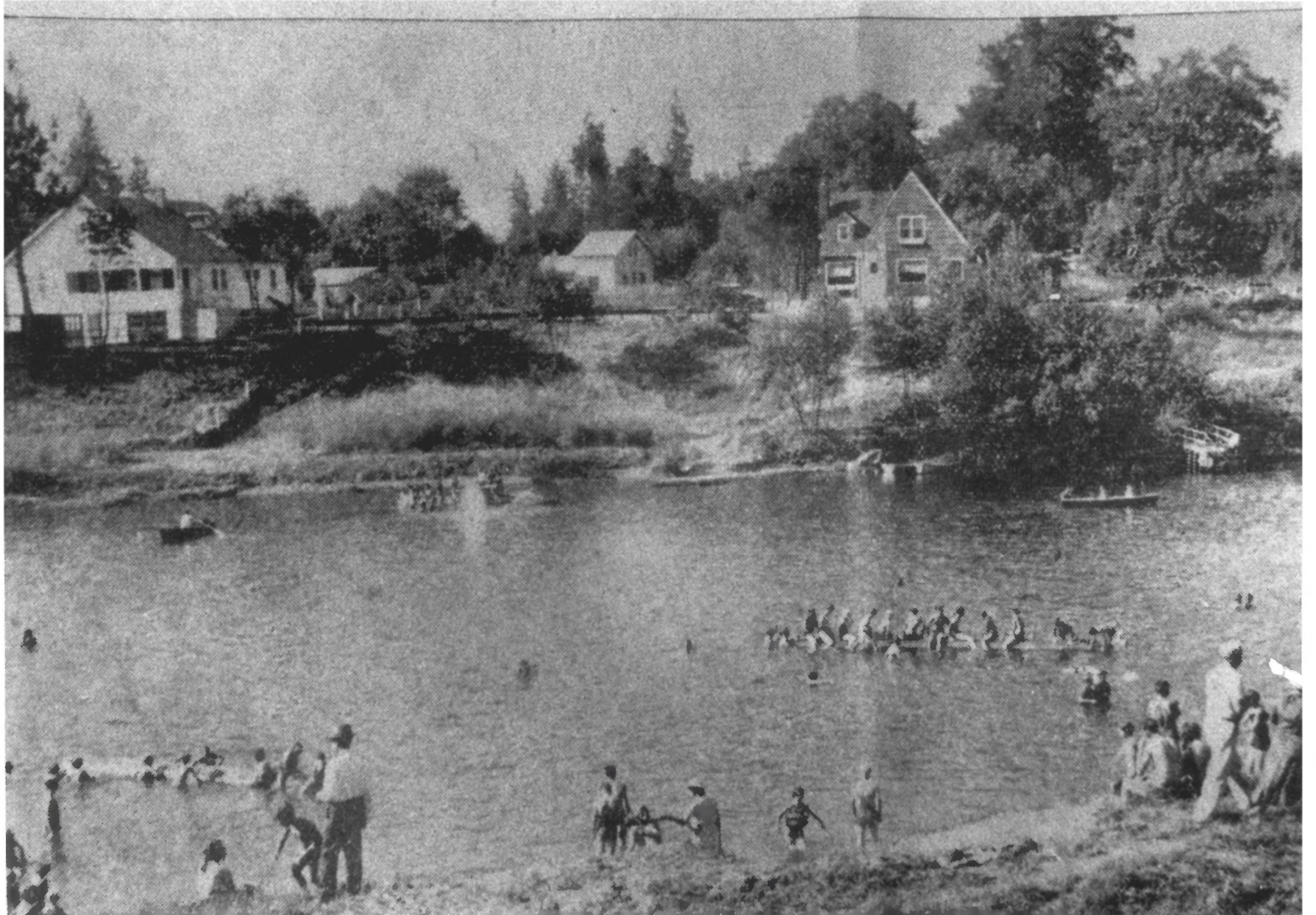


CLARK - McLonnell Hse
GRANTS PASS, OR
JOSADIKINI' COUNTRY

1/14





CLARK - McCONNELL HSS

GRANTS PASS, OR

YOSEMITE COUNTY

$\frac{3}{14}$



CLARK-McCONNELL HSS
GRANTS PASS, OR
YOSEMITE COUNTY

9/14



CLARK - McCONNELL HSE

GRANTS PASS, OR

JOSQUINA County

5/14



CLARK-McCONNELL HSS
GRANTS PASS, OR
TOSHANA COUNTY
6/19



CLARK-McCONNELL HSS

GRANTS PASS, OR
JOSAMITHA COUNTY

7/14



CLARK-McCONNELL HSS

GRANTS PASS, OR

JOSAPHINE COUNTY

8/14



CLARK-MCCONNELL H&F

GRANTS PASS, OR

Josannina' country

9/14



CLARK - McCONNELL #5

GRANTS PASS, OR

Tosawinina County

10/14



CLARK - McCONNELL HSS

GRANTS PASS, OR

Josaphine County

" / 14



CLARK-McCONNELL H&S

GRANTS PASS, OR
JOSEPHINE COUNTY

12/14

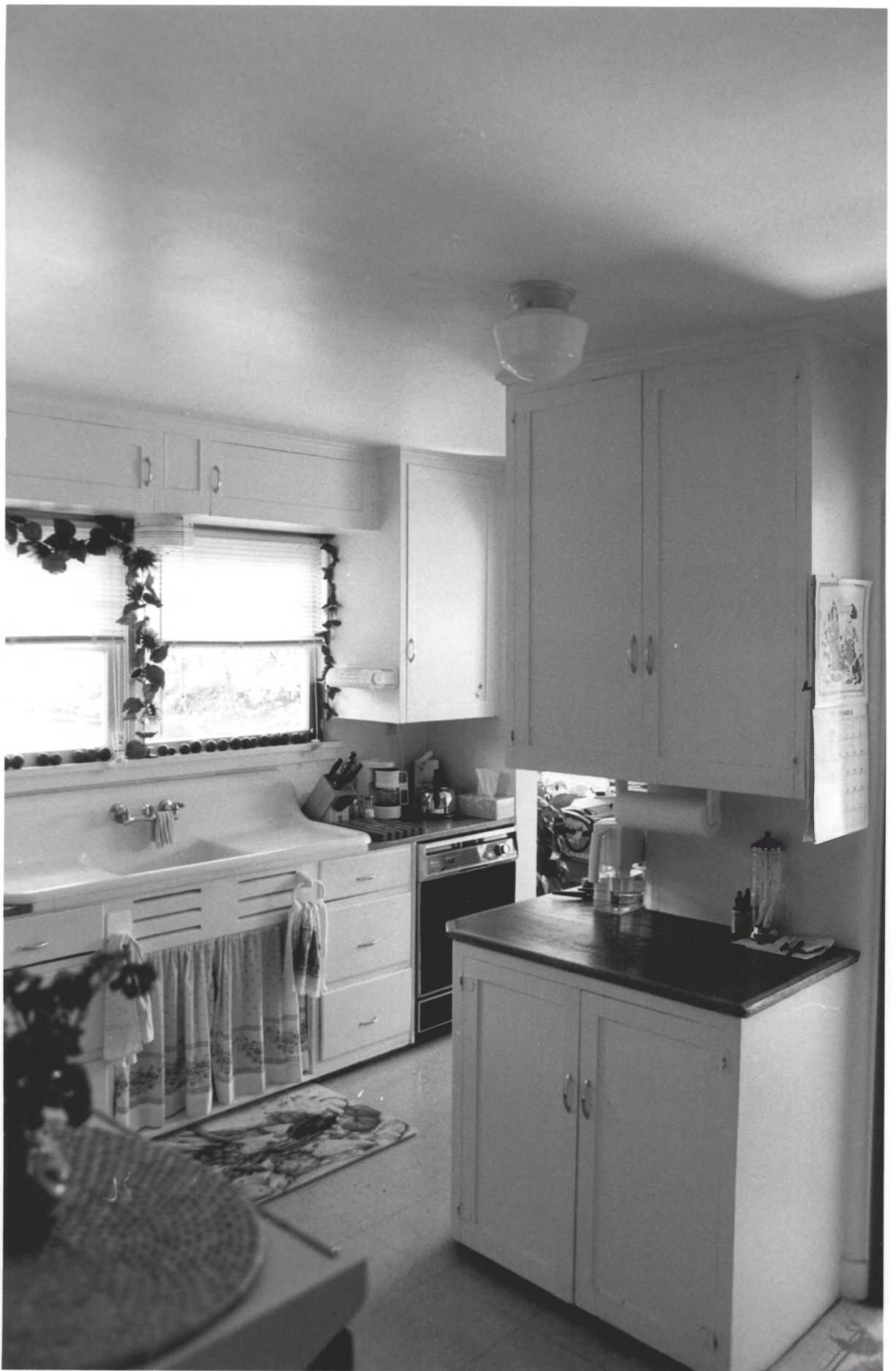


CLARK-McCONNELL HSS

GRANTS PASS, OR

JOSEPHINE COUNTY

13/14



CLARK-McCONNELL HSS

GRANTS PASS, OR

Josaminta County

14 / 14