



88-7-32

Bennington Railroad Station

Bennington, Vermont

Credit: Hugh H. Henry

Date: June 1987

Negative filed at Vermont Division
for Historic Preservation

South elevation; view looking
northwest.

Photograph 1



88A-32

Bennington Railroad Station
Bennington, Vermont

Credit: Hugh H. Henry

Date: June 1987

Negative filed at Vermont Division
for Historic Preservation

West and south elevations; view
looking northeast.

Photograph 2



88A-32

Bennington Railroad Station
Bennington, Vermont
Credit: Hugh H. Henry
Date: June 1987
Negative filed at Vermont Division
for Historic Preservation
East and north elevations; view
looking southwest.
Photograph 3



88A-32

Bennington Railroad Station
Bennington, Vermont

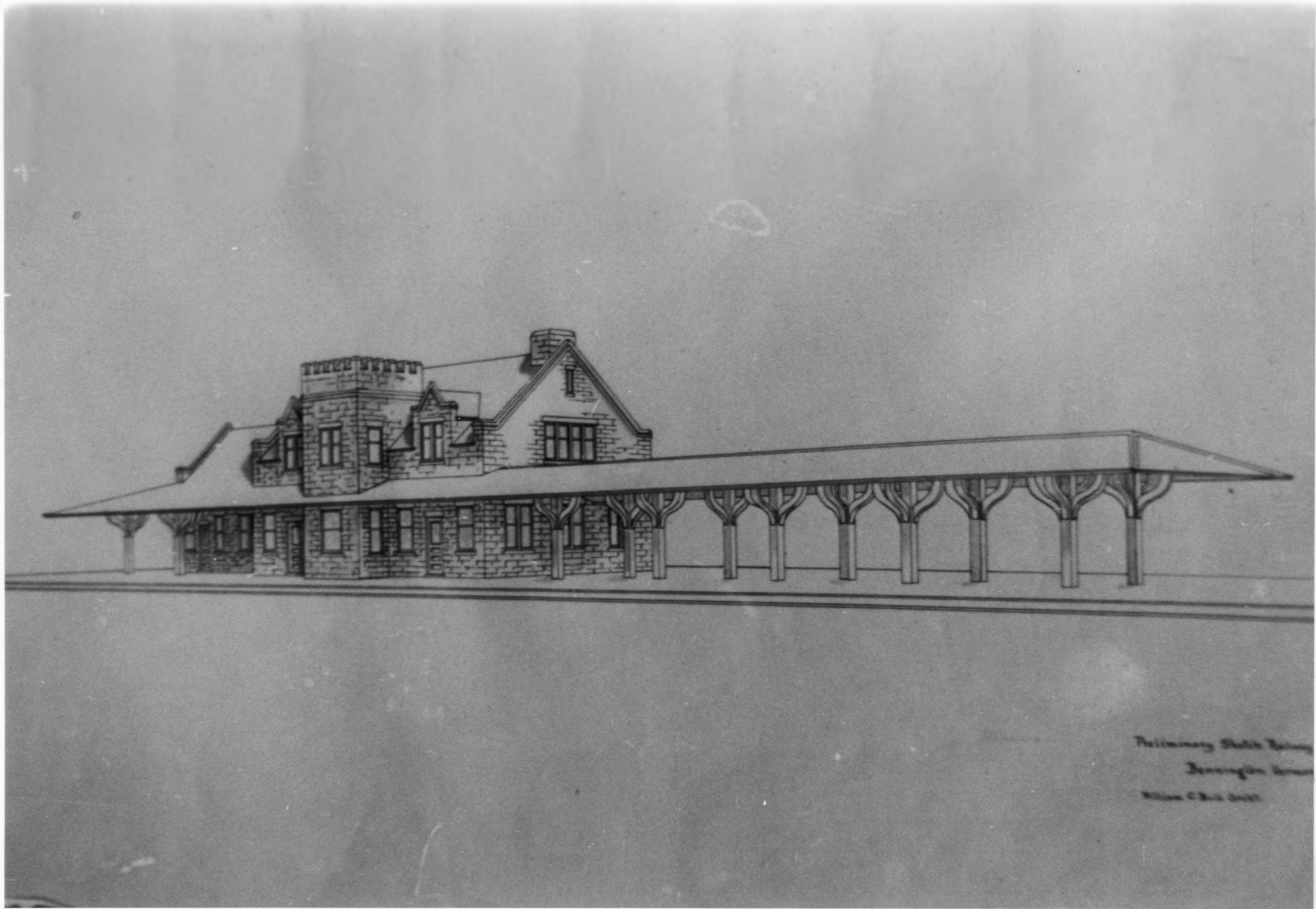
Credit: Hugh H. Henry

Date: June 1987

Negative filed at Vermont Division
for Historic Preservation

Porte-cochere on east facade; view
looking northwest.

Photograph 4



Preliminary Station Building
Birmingham, Ala.
William C. Hall, Architect

86-7-67

Bennington Railroad Station
Bennington, Vermont
Credit: Weichert-Isselhardt Collection
Date: c. 1897
Negative filed at Vermont Division for
Historic Preservation
Preliminary sketch of west and south
elevations by W. C. Bull, architect.
Photograph 5



86-7-67

Bennington Railroad Station
Bennington, Vermont
Credit: Weichert-Isselhardt Collection
Date: c. 1910
Negative filed at Vermont Division for
Historic Preservation
South and east elevations; view look-
ing northwest.
Photograph 6