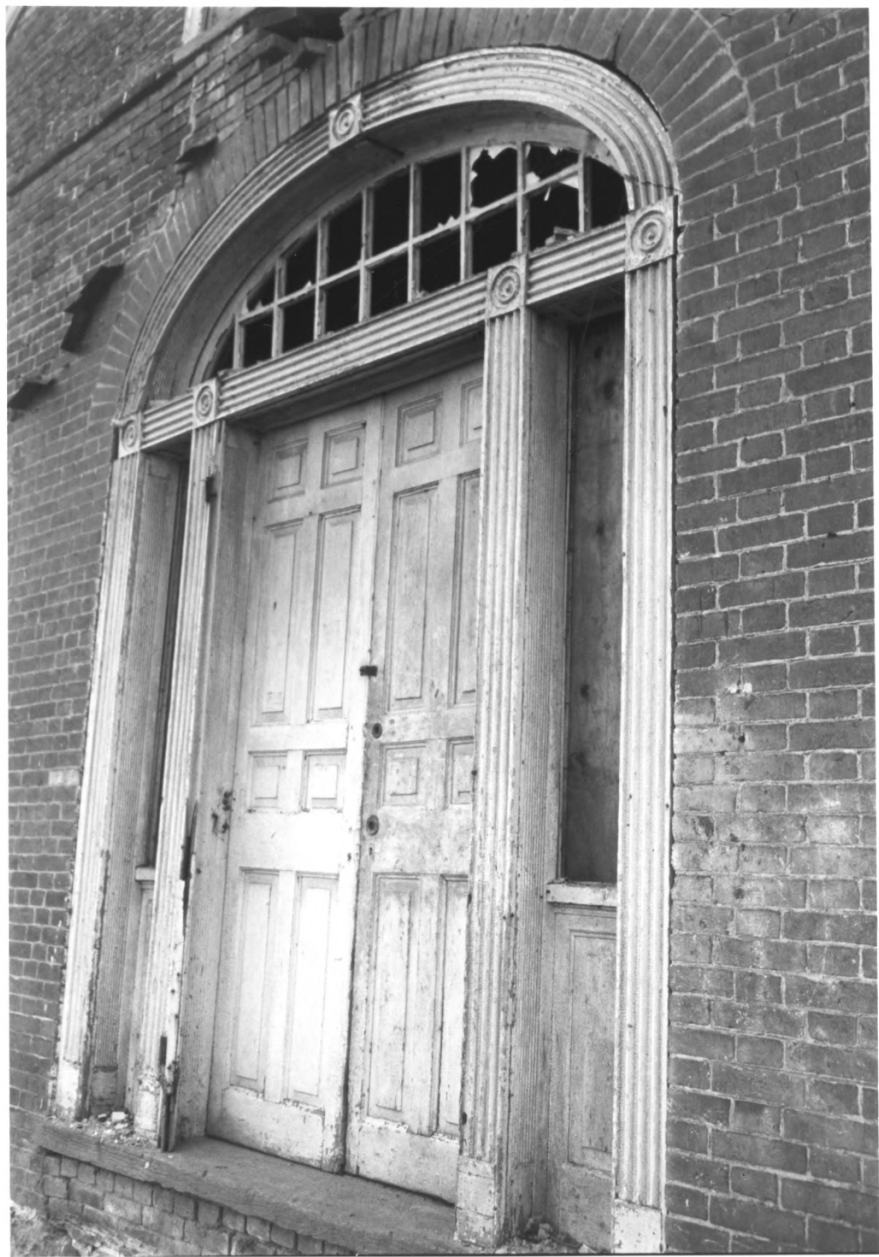


Innes House  
Fayette County, Kentucky

Richard S. DeCamp, Historic Commission  
253 Market Street  
Lexington, Kentucky 40508  
November 1982

Photo 1 of 8  
View of house looking northwest



Innes House  
Fayette County, Kentucky

Richard S. DeCamp, Historic Commission  
253 Market Street  
Lexington, KY 40508  
November 1982

Photo 2 of 8  
Front door of Innes House



Innes House  
Fayette County, Kentucky

Richard S. DeCamp, Historic Commission  
253 Market Steet  
Lexington, Kentucky 40508  
November 1982

Photo 3 of 8  
Palladian window above front doorway



Innes House  
Fayette County, Kentucky

Richard S. DeCamp, Historic Commission  
253 Market Street  
Lexington, Kentucky 40508  
November 1982

Photo 4 of 8  
Arched doorway and windows on Innes  
House looking east.





Innes House  
Fayette County, Kentucky

Richard S. DeCamp, Historic Commission  
253 Market Street  
Lexington, KY 40508  
November 1982

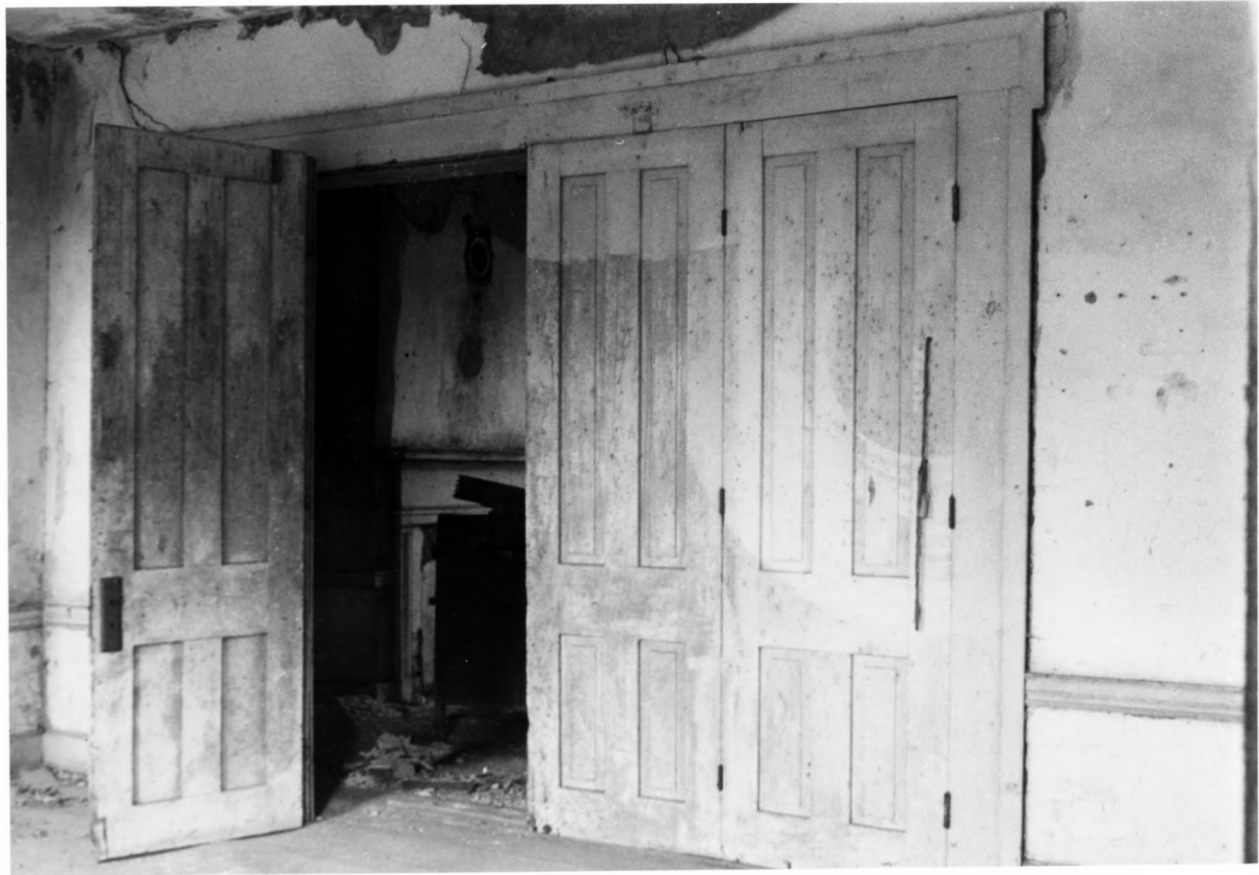
Photo 5 of 8  
Mantel and presses in Innes House first  
floor room.



Innes House  
Fayette County, Kentucky

Richard S. DeCamp, Historic Commission  
253 Market Street  
Lexington, Kentucky 40508  
November 1982

Photo 6 of 8  
Mantel in first floor room in Innes House



Innes House  
Fayette County, Kentucky

Richard S. DeCamp, Historic Commission  
253 Market Street  
Lexington, Kentucky 40508  
November 1982

Photo 7 of 8  
Double folding doors on lower floor of  
Innes House.



Innes House  
Fayette County, Kentucky

Richard S. DeCamp, Historic Commission  
253 Market Street  
Lexington, Kentucky 40508  
November 1982

Photo 8 of 8  
Stairway, decorative stepends, chair  
rails, and doorframes in Innes House.