



Downtown Commercial District  
Fayette County, Kentucky

Richard S. DeCamp, Historic Commission  
253 Market Street  
Lexington, KY 40508  
April 1983

Photo 1 of 47  
200 block of West Main Street looking  
northeast.



Downtown Commercial District  
Fayette County, Kentucky

Richard S. DeCamp, Historic Commission  
253 Market Street  
Lexington, KY 40508  
April 1983

Photo 2 of 47  
309-315 W. Main Street looking north.  
Fa-LDT-122



Downtown Commercial District  
Fayette County, Kentucky

Richard S. DeCamp, Historic Commission  
253 Market Street  
Lexington, KY 40508  
April 1983

Photo 3 of 47  
Main Street looking northeast.



Downtown Commercial District  
Fayette County, Kentucky

Richard S. DeCamp, Historic Commission  
253 Market Street  
Lexington, KY 40508  
April 1983

Photo 4 of 47  
259-65 W. Main Street looking northwest.  
Fa-LDT-93





Downtown Commercial District  
Fayette County, Kentucky

Richard S. DeCamp, Historic Commission  
253 Market Street  
Lexington, KY 40508  
April 1983

Photo 5 of 47  
Fayette County Courthouse looking northwest.  
Fa-LDT-110



Downtown Commercial District  
Fayette County, Kentucky

Richard S. DeCamp, Historic Commission  
253 Market Street  
Lexington, KY 40508  
April 1983

Photo 6 of 47  
100 block of West Main Street looking west.



Downtown Commercial District  
Fayette County, Kentucky

Richard S. DeCamp, Historic Commission  
253 Market Street  
Lexington, KY 40508  
April 1983

Photo 7 of 47  
159-67 West Main Street looking northeast.  
Fa-LDT-108



Downtown Commercial District  
Fayette County, Kentucky

Richard S. DeCamp, Historic Commission  
253 Market Street  
Lexington, KY 40508  
April 1983

Photo 8 of 47  
145-51 West Main Street looking northwest.  
Fa-LDT-104





Downtown Commercial District  
Fayette County, Kentucky

Richard S. DeCamp, Historic Commission  
253 Market Street  
Lexington, KY 40508  
April 1983

Photo 9 or 47  
127-29 West Main Street looking  
northwest. Fa-LDT-108



MONDELLIS' Bar

Jewellers  
WATCHES  
JEWELRY



3 GUYS  
AND GALS  
STANDARDS



Downtown Commercial District  
Fayette County, Kentucky

Richard S. DeCamp, Historic Commission  
253 Market Street  
Lexington, KY 40508  
April 1983

Photo 10 of 47  
115-19 West Main Street looking northeast.  
Fa-LDT-98



Downtown Commercial District  
Fayette County, Kentucky

Richard S. DeCamp, Historic Commission  
253 Market Street  
Lexington, KY 40508  
April 1983

Photo 11 of 47  
100 block of East Main Street looking  
northwest.

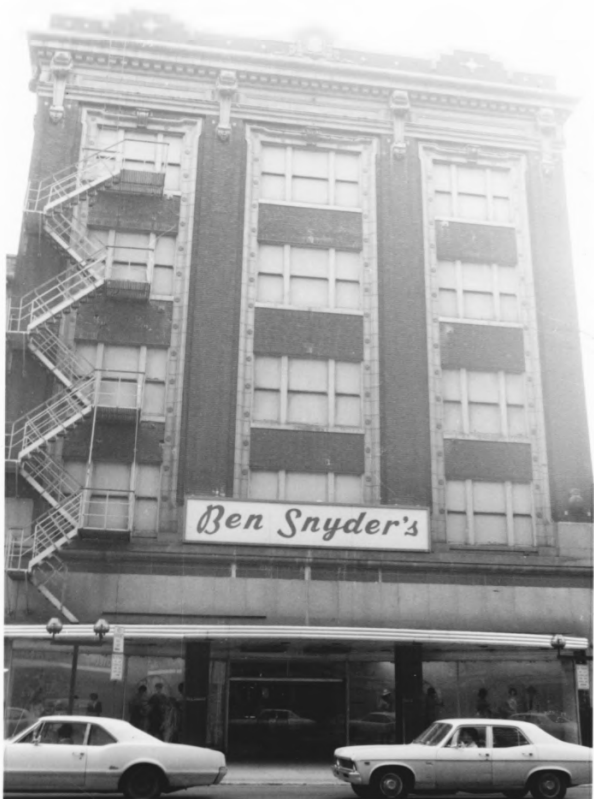


Downtown Commercial District  
Fayette County, Kentucky

Richard S. DeCamp, Historic Commission  
253 Market Street  
Lexington, KY 40508  
April 1983

Photo 12 of 47  
101-109 East Main Street looking northwest  
Fa-LDT-63





*Ben Snyder's*

Downtown Commercial District  
Fayette County, Kentucky

Richard S. DeCamp, Historic Commission  
253 Market Street  
Lexington, KY 40508  
April 1983

Photo 13 of 47  
113-17 East Main Street looking north.  
Fa-LDT-66



Downtown Commercial District  
Fayette County, Kentucky

Richard S. DeCamp, Historic Commission  
253 Market Street  
Lexington, KY 40508  
April 1983

Photo 14 of 47  
141-43 East Main Street looking northwest  
Fa-LDT-73



Downtown Commercial District  
Fayette County, Kentucky

Richard S. DeCamp, Historic Commission  
253 Market Street  
Lexington, KY 40508  
April 1983

Photo 15 of 47  
139 E. Main Street looking northwest.  
Fa-LDT-73



L.T. Davis  
OFFICE EQUIPMENT CO.  
*Remington*  
OFFICE MACHINES  
SALES • SERVICE • SUPPLIES  
316 W. SHORT

W. SHORT

Downtown Commercial District  
Fayette County, Kentucky

Richard S. DeCamp, Historic Commission  
253 Market Street  
Lexington, KY 40508  
April 1983

Photo 16 of 47  
300 block of West Short Street





Downtown Commercial District  
Fayette County, Kentucky

Richard S. DeCamp, Historic Commission  
253 Market Street  
Lexington, KY 40508  
April 1983

Photo 17 of 47  
300 West Short Street looking southwest.  
Fa-LDT-174



Downtown Commercial District  
Fayette County, Kentucky

Richard S. DeCamp, Historic Commission  
253 Market Street  
Lexington, KY 40508  
April 1983

Photo 18 of 47  
310-14 West Short Street looking south.  
Fa-LDT-176



Downtown Commercial District  
Fayette County, Kentucky

Richard S. DeCamp, Historic Commission  
253 Market Street  
Lexington, KY 40508  
April 1983

Photo 19 of 47  
316-18 West Short Street looking south.  
Fa-LDT-178



Downtown Commercial District  
Fayette County, Kentucky

Richard S. DeCamp, Historic Commission  
253 Market Street  
Lexington, KY 40508  
April 1983

Photo 20 of 47  
315-307 West Short Street looking north.  
Fa-LDT-177





Downtown Commercial District  
Fayette County, Kentucky

Richard S. DeCamp, Historic Commission  
253 Market Street  
Lexington, KY 40508  
April 1983

Photo 21 of 47  
269-75 West Short Street looking northwest.  
Fa-LDT-173



Downtown Commercial District  
Fayette County, Kentucky

Richard S. DeCamp, Historic Commission  
253 Market Street  
Lexington, KY 40508  
April 1983

Photo 22 of 47  
259-67 West Short Street looking northwest.  
Fa-LDT-171



Downtown Commercial District  
Fayette County, Kentucky

Richard S. DeCamp, Historic Commission  
253 Market Street  
Lexington, KY 40508  
April 1983

Photo 23 of 47  
249 West Short Street looking north.  
Fa-LDT-170



Downtown Commercial District  
Fayette County, Kentucky

Richard S. DeCamp, Historic Commission  
253 Market Street  
Lexington, KY 40508  
April 1983

Photo 24 of 47  
215-219 West Short Street looking north  
Fa-LDT-166





Downtown Commercial District  
Fayette County, Kentucky

Richard S. DeCamp, Historic Commission  
253 Market Street  
Lexington, KY 40508  
April 1983

Photo 25 of 47  
201-11 West Short Street looking north.  
Fa-LDT-165



Downtown Commercial District  
Fayette County, Kentucky

Richard S. DeCamp, Historic Commission  
253 Market Street  
Lexington, KY 40508  
April 1983

Photo 26 of 47  
100 block of West Short Street looking  
northwest.



Downtown Commercial District  
Fayette County, Kentucky

Richard S. DeCamp, Historic Commission  
253 Market Street  
Lexington, KY 40508  
April 1983

Photo 27 of 47  
159-67 West Short Street looking northwest.  
Fa-LDT-164



WANT OFFERS  
SALE OR  
LEASE

ALL INFORMATION  
PLEASE CONTACT  
BUDY HARRIS  
PHONE 602-241402

TRANSYLVANIA  
COMPANY

SALE OR LEASE

SALE OR LEASE

Downtown Commercial District  
Fayette County, Kentucky

Richard S. DeCamp, Historic Commission  
253 Market Street  
Lexington, KY 40508

Photo 28 of 47  
100 block of West Short Street looking  
northwest.





Downtown Commercial District  
Fayette County, Kentucky

Richard S. DeCamp, Historic Commission  
253 Market Street  
Lexington, KY 40508  
April 1983

Photo 29 of 47  
101-05 West Short Street looking north.  
Fa-LDT-156



Downtown Commercial District  
Fayette County, Kentucky

Richard S. DeCamp, Historic Commission  
253 Market Street  
Lexington, KY 40508  
April 1983

Photo 30 of 47  
102-120 West Short Street looking southwest.  
Fa-LDT-155



Downtown Commercial District  
Fayette County, Kentucky

Richard S. DeCamp, Historic Commission  
253 Market Street  
Lexington, KY 40508  
April 1983

Photo 31 of 47  
East side of 100 block of North Limestone 100  
looking northwest.



Downtown Commercial District  
Fayette County, Kentucky

Richard S. DeCamp, Historic Commission  
253 Market Street  
Lexington, KY 40508  
April 1983

Photo 32 of 47  
West side of 100 block of North Limestone  
looking southwest.





Downtown Commercial District  
Fayette County, Kentucky

Richard S. DeCamp, Historic Commission  
253 Market Street  
Lexington, KY 40508  
April 1983

Photo 33 of 47  
West side of North Limestone between  
Short and Church streets looking north.



Downtown Commercial District  
Fayette County, Kentucky

Richard S. DeCamp, Historic Commission  
253 Market Street  
Lexington, KY 40508  
April 1983

Photo 34 of 47  
159 North Limestone looking north.  
Fa-LDT-119



Downtown Commercial District  
Fayette County, Kentucky

Richard S. DeCamp, Historic Commission  
253 Market Street  
Lexington, KY 40508  
April 1983

Photo 35 of 47  
108-14 Church Street looking west.  
Fa-LDT-239

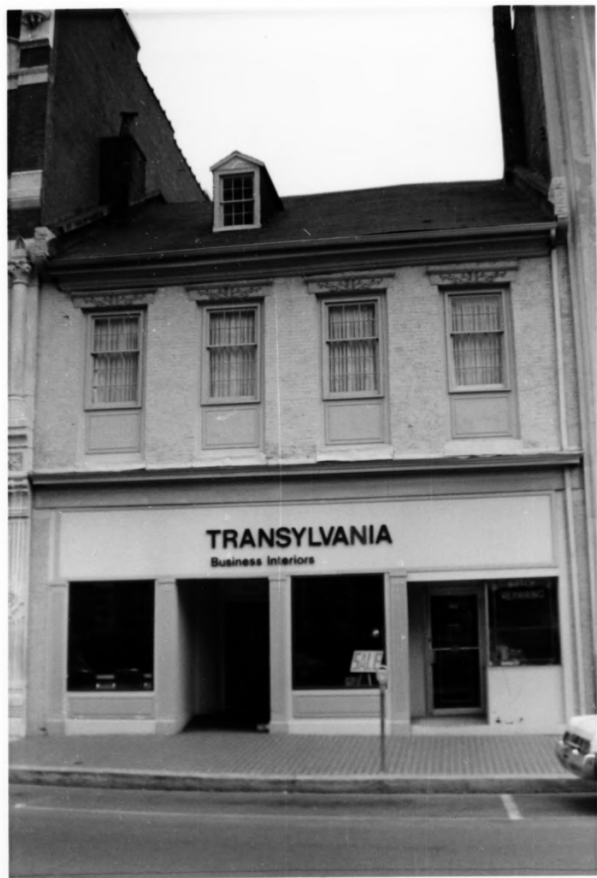


Downtown Commercial District  
Fayette County, Kentucky

Richard S. DeCamp, Historic Commission  
253 Market Street  
Lexington, KY 40508  
April 1983

Photo 36 of 47  
West side of North Upper Street between  
Short and Main Streets looking southeast





**TRANSYLVANIA**  
Business Interiors

Downtown Commercial District  
Fayette County, Kentucky

Richard S. DeCamp, Historic Commission  
253 Market Street  
Lexington, KY 40508  
April 1983

Photo 37 of 47  
110-12 North Upper Street looking east  
Fa-LDT-193



Downtown Commercial District  
Fayette County, Kentucky

Richard S. DeCamp, Historic Commission  
253 Market Street  
Lexington, KY 40508  
April 1983

Photo 38 of 47  
122-24 North Upper Street looking southeast  
Fa-LDT-195



Downtown Commercial District  
Fayette County, Kentucky

Richard S. DeCamp, Historic Commission  
253 Market Street  
Lexington, KY 40508  
April 1983

Photo 39 of 47  
114-16 North Upper Street looking southeast  
Fa-LDT-194

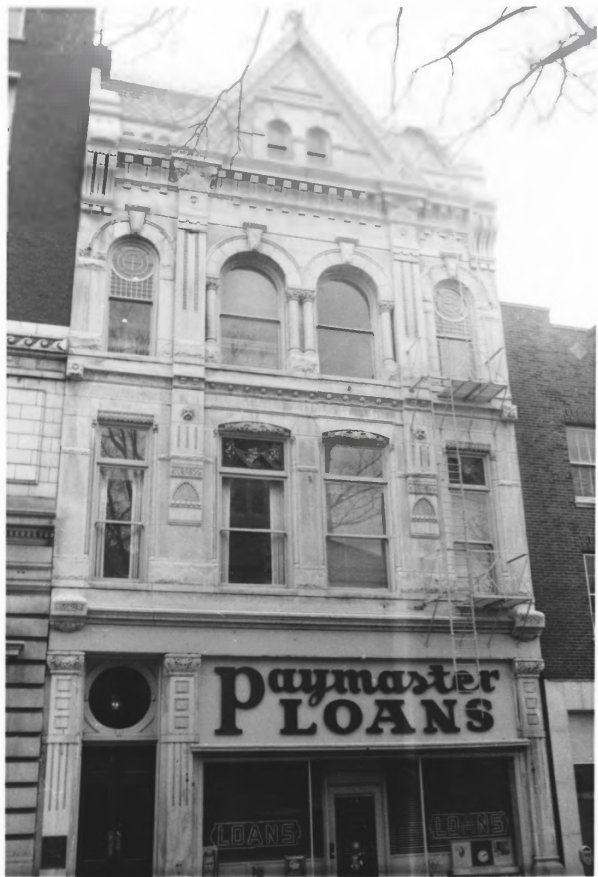


Downtown Commercial District  
Fayette County, Kentucky

Richard S. DeCamp, Historic Commission  
253 Market Street  
Lexington, KY 40508  
April 1983

Photo 40 of 47  
West side of Cheapside between Short and  
Main Streets





Paymaster  
**LOANS**

LOANS

LOANS

Downtown Commercial District  
Fayette County, Kentucky

Richard S. DeCamp, Historic Commission  
253 Market Street  
Lexington, KY 40508  
April 1983

Photo 41 of 47  
111-13 Cheapside looking northwest.  
Fa-LDT-21



Downtown Commercial District  
Fayette County, Kentucky

Richard S. DeCamp, Historic Commission  
253 Market Street, LG  
Lexington, KY 40508  
April 1983

Photo 42 of 47  
West side of North Mill Street between  
Main and Short streets



Downtown Commercial District  
Fayette County, Kentucky

Richard S. DeCamp, Historic Commission  
253 Market Street  
Lexington, KY 40508  
April 1983

Photo 43 of 47  
East side of North Mill Street between  
Main and Short streets



Downtown Commercial District  
Fayette County, Kentucky

Richard S. DeCamp, Historic Commission  
253 Market Street  
Lexington, KY 40508  
April 1983

Photo 44 of 47  
125 North Mill Street looking west  
Fa-LDT-141





Downtown Commercial District  
Fayette County, Kentucky

Richard S. DeCamp, Historic Commission  
253 Market Street  
Lexington, KY 40508  
April 1983

Photo 45 of 47  
115-17 North Mill Street looking west  
Fa-LDT-139



Downtown Commercial District  
Fayette County, Kentucky

Richard S. DeCamp, Historic Commission  
253 Market Street  
Lexington, KY 40508  
April 1983

Photo 46 of 47  
119 North Mill Street looking northwest  
Fa-LDT-140



Downtown Commercial District  
Fayette County, Kentucky

Richard S. DeCamp, Historic Commission  
253 Market Street  
Lexington, KY 40508  
April 1983

Photo 47 of 47  
108-110 North Mill Street looking  
northeast  
Fa-LDT-137



LAW OFFICES

HADDIX & SMITH  
WAXING & CLEANING

Downtown Commercial District  
Fayette County, Kentucky

115-17 Cheapside  
Fa-LDT-22





Downtown Commercial District  
Fayette County, Kentucky

112 North Mill Street  
Fa-LDT-23



Downtown Commercial District  
Fayette County, Kentucky

116-18 North Mill Street  
Fa-LDT-23



JOHN G. KING  
INSURANCE

INSURANCE  
ALL TYPES

KENTUCKY FINANCE  
LOANS

Downtown Commercial District  
Fayette County, Kentucky

125-27 Cheapside  
Fa-LDT-24



Downtown Commercial District  
Fayette County, Kentucky

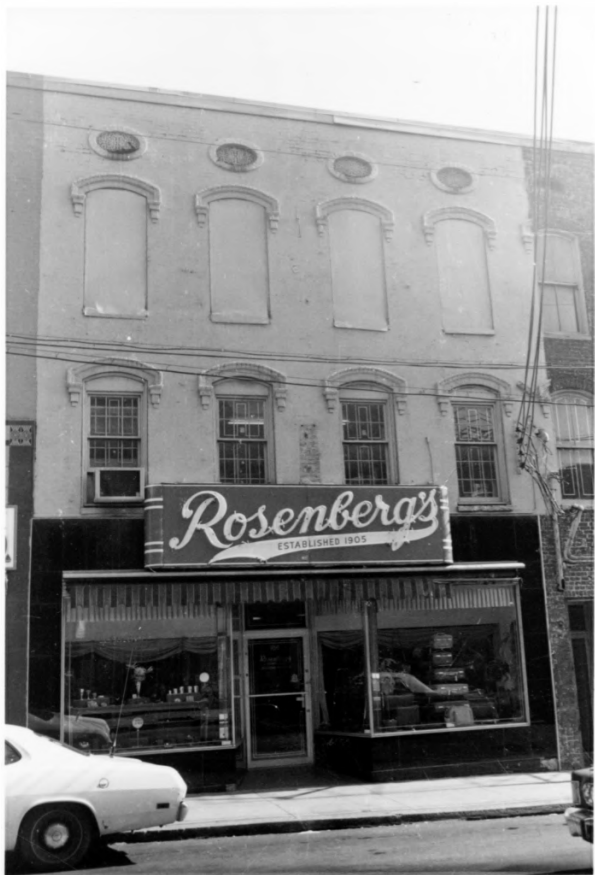
119-23 Cheapside  
Fa-LDT-23





Downtown Commercial District  
Fayette County, Kentucky

129-31 Cheapside  
Fa-LDT-25



Downtown Commercial District  
Fayette County, Kentucky

106-108 North Limestone  
Fa-LDT-28



Downtown Commercial District  
Fayette County, Kentucky

109-13 North Limestone  
Fa-LDT-29



Downtown Commercial District  
Fayette County, Kentucky

110-12 North Limestone  
Fa-LDT-30





Downtown Commercial District  
Fayette County, Kentucky

122 North Limestone  
Fa-LDT-31



Downtown Commercial District  
Fayette County, Kentucky

124-28 North Limestone  
Fa-LDT-32



FAYETTE FINANCE CO.

*Signature Loans*  
AUTO - FURNITURE

 *Tanya's*  
JEWELERS-ENGRAVERS

Watches  
JEWELRY  
WATCHES  
&  
JEWELRY

Downtown Commercial District  
Fayette County, Kentucky

130-32 North Limestone  
Fa-LDT-33



Downtown Commercial District  
Fayette County, Kentucky

135-37 North Limestone  
Fa-LDT-34





Downtown Commercial District  
Fayette County, Kentucky

131-33 North Limestone  
Fa-LDT-34



LIMESTONE  
BUILDING

LIMESTONE BUILDING

ONE  
WAY

Downtown Commercial District  
Fayette County, Kentucky

134 North Limestone  
Fa-LDT-35



Downtown Commercial District  
Fayette County, Kentucky

139-43 North Limestone  
Fa-LDT-36



Downtown Commercial District  
Fayette County, Kentucky

149-53 North Limestone  
Fa-LDT-41





Merit

FURNITURE INC.

SOUTHLAND  
HOTEL

STATTON

MARCAIQUIN

Downtown Commercial District  
Fayette County, Kentucky

155 North Limestone  
Fa-LDT-42



Downtown Commercial District  
Fayette County, Kentucky

111 East Main Street.

Fa-LDT-65



Downtown Commercial District  
Fayette County, Kentucky

123-25 East Main Street.

Fa-LDT-67



*Pal* OPTICAL  
COMPANY

Downtown Commercial District  
Fayette County, Kentucky

129-31 East Main Street.

Fa-LDT-68





Downtown Commercial District  
Fayette County, Kentucky

133 East Main Street  
Fa-LDT-69



Downtown Commercial District  
Fayette County, Kentucky

135 East Main Street.

Fa-LDT-70



Downtown Commercial District  
Fayette County, Kentucky

137 East Main Street.

Fa-LDT-71



Downtown Commercial District  
Fayette County, Kentucky

145-49 East Main Street.

Fa-LDT-74





Downtown Commercial District  
Fayette County, Kentucky

101-03 West Main Street.

Fa-LDT-95



Downtown Commercial District  
Fayette County, Kentucky

Skuller's clock at 115-19 West Main Street.  
Fa-LDT-99



Downtown Commercial District  
Fayette County, Kentucky

General Morgan statue in Courthouse  
Square. Fa-LDT-111



Downtown Commercial District  
Fayette County, Kentucky

Fountain on Courthouse Square.  
Fa-LDT-112



SCHULTE-UN



WEST →

STARTING  
POINT  
FROM  
LEXINGTON  
ON ALL  
HIGHWAYS



Downtown Commercial District  
Fayette County, Kentucky

Camel marker on Courthouse Square.  
Fa-LDT-113



Downtown Commercial District  
Fayette County, Kentucky

Breckinridge statue in Courthouse Square.

Fa-LDT-114



Downtown Commercial District  
Fayette County, Kentucky

301-305 W. Main Street  
Fa-LDT-121



Downtown Commercial District  
Fayette County, Kentucky

109 North Mill Street

Fa-LDT-138





Downtown Commercial District  
Fayette County, Kentucky

121 North Mill Street  
Fa-LDT-141



**1ST FINANCE  
LOANS**

NO PARKING  
24 HOURS  
NO PARKING  
24 HOURS

107  
1ST FINANCY CO.

Downtown Commercial District  
Fayette County, Kentucky

107 West Short Street  
Fa-LDT-157



Downtown Commercial District  
Fayette County, Kentucky

109-115 West Short Street  
Fa-LDT-158



BUCKLEY  
OF AMERICA  
INSURANCE

One Eleven

NO  
PARKING  
ON LOT  
SIDE  
STREET

Downtown Commercial District  
Fayette County, Kentucky

109-115 West Short Street  
Fa-LDT-158





Downtown Commercial District  
Fayette County, Kentucky

129-31 West Short Street  
Fa-LDT-159



Downtown Commercial District  
Fayette County, Kentucky

133 West Short Street  
Fa-LDT-160



Downtown Commercial District  
Fayette County, Kentucky

155-57 West Short Street  
Fa-LDT-163



Downtown Commercial District  
Fayette County, Kentucky

307-09 West Short Street  
Fa-LDT-175





Downtown Commercial District  
Fayette County, Kentucky

108 North Upper Street  
Fa-LDT-207



347

OPEN  
10-5  
MON-SAT

ALICE'S  
BOOK STORE  
TRADE BOOK'S TRADE  
OF ALL  
UNDERIR KINDS  
DONOT

Downtown Commercial District  
Fayette County, Kentucky

147 North Limestone  
Fa-LDT-238