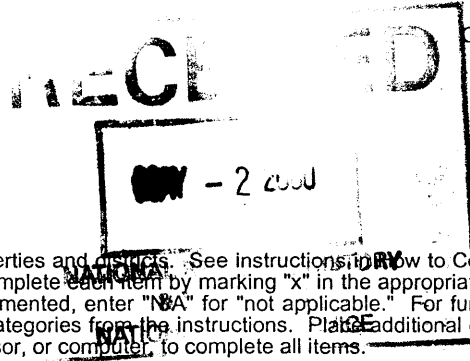


United States Department of the Interior
National Park Service

NATIONAL REGISTER OF HISTORIC PLACES
REGISTRATION FORM



This form is for use in nominating or requesting determinations for individual properties and districts. See instructions on how to complete the National Register of Historic Places Registration Form (National Register Bulletin 16A). Complete each item by marking "x" in the appropriate box or by entering the information requested. If any item does not apply to the property being documented, enter "N/A" for "not applicable." For functions, architectural classification, materials, and areas of significance, enter only categories and subcategories from the instructions. Place additional entries and narrative items on continuation sheets (NPS Form 10-900a). Use a typewriter, word processor, or computer, to complete all items.

1. Name of Property

historic name INTERLACHEN HALL

other names/site number _____

2. Location

street & number 215 Atlantic Ave.

N/A not for publication

city or town Interlachen

N/A vicinity

state FLORIDA code FL county Putnam code 107 zip code 32148

3. State/Federal Agency Certification

As the designated authority under the National Historic Preservation Act, as amended, I hereby certify that this nomination request for determination of eligibility meets the documentation standards for registering properties in the National Register of Historic Places and meets the procedural and professional requirements set forth in 36 CFR Part 60. In my opinion, the property meets does not meet the National Register criteria. I recommend that this property be considered significant nationally statewide locally. (See continuation sheet for additional comments.)

Just Snyder Matthews 4/25/2000
Signature of certifying official/Title Date

Florida State Historic Preservation Officer, Division of Historical Resources
State or Federal agency and bureau

In my opinion, the property meets does not meet the National Register criteria. (See continuation sheet for additional comments.)

Signature of certifying official/Title Date

State or Federal agency and bureau

4. National Park Service Certification

I hereby certify that the property is:

- entered in the National Register See continuation sheet
- determined eligible for the National Register See continuation sheet.
- determined not eligible for the National Register See continuation sheet.
- removed from the National Register.
- other, (explain) _____

Robert A. Beall
Signature of the Keeper

Date of Action 6.2.00

5. Classification

Ownership of Property
(Check as many boxes as apply)

- private
- public-local
- public-State
- public-Federal

Category of Property
(Check only one box)

- buildings
- district
- site
- structure
- object

Number of Resources within Property
(Do not include any previously listed resources in the count)

Contributing	Noncontributing	
1	0	buildings
0	0	sites
0	0	structures
0	0	objects
1	0	total

Name of related multiple property listings
(Enter "N/A" if property is not part of a multiple property listing.)

"N/A"

Number of contributing resources previously listed in the National Register

0

6. Function or Use

Historic Functions
(Enter categories from instructions)

SOCIAL: meeting hall

Current Functions
(Enter categories from instructions)

SOCIAL: meeting hall

7. Description

Architectural Classification
(Enter categories from instructions)

OTHER: frame vernacular

Materials
(Enter categories from instructions)

foundation BRICK
walls WOOD

roof METAL
other _____

Narrative Description

(Describe the historic and current condition of the property on one or more continuation sheets.)

8. Statement of Significance

Applicable National Register Criteria

(Mark "x" in one or more boxes for the criteria qualifying the property for National Register listing.)

- A** Property is associated with events that have made a significant contribution to the broad patterns of our history.
- B** Property is associated with the lives of persons significant in our past.
- C** Property embodies the distinctive characteristics of a type, period, or method of construction or represents the work of a master, or possesses high artistic values, or represents a significant and distinguishable entity whose components lack individual distinction.
- D** Property has yielded, or is likely to yield information important in prehistory or history.

Criteria Considerations

(Mark "x" in all the boxes that apply.)

Property is:

- A** owned by a religious institution or used for religious purposes.
- B** removed from its original location.
- C** a birthplace or grave.
- D** a cemetery.
- E** a reconstructed building, object, or structure.
- F** a commemorative property.
- G** less than 50 years of age or achieved significance within the past 50 years

Narrative Statement of Significance

(Explain the significance of the property on one or more continuation sheets.)

9. Major Bibliographical References

Bibliography

Cite the books, articles, and other sources used in preparing this form on one or more continuation sheets.)

Previous documentation on file (NPS):

- preliminary determination of individual listing (36 CFR 36) has been requested
- previously listed in the National Register
- previously determined eligible by the National Register
- designated a National Historic Landmark
- recorded by Historic American Buildings Survey # _____
- recorded by Historic American Engineering Record

Areas of Significance

(Enter categories from instructions)

SOCIAL HISTORY

ARCHITECTURE

Period of Significance

1892-1950

Significant Dates

1892

Significant Person

N/A

Cultural Affiliation

N/A

Architect/Builder

unknown

Primary location of additional data:

- State Historic Preservation Office
- Other State Agency
- Federal agency
- Local government
- University
- Other

Name of Repository

Interlachen Hall
Name of Property

Putnam Co., FL
County and State

10. Geographical Data

Acreeage of Property less than one acre

UTM References

(Place additional references on a continuation sheet.)

1	1	7	4	1	3	5	8	0	3	3	7	7	2	0	0
	Zone		Easting						Northing						
2															

3															
	Zone		Easting						Northing						
4															

See continuation sheet

Verbal Boundary Description

(Describe the boundaries of the property on a continuation sheet.)

Boundary Justification

(Explain why the boundaries were selected on a continuation sheet.)

11. Form Prepared By

name/title Mary Lou Dawson/Robert O. Jones, Historic Sites Specialist

organization Bureau of Historic Preservation date April 2000

street & number R.A. Gray Building, 500 S. Bronough Street telephone (850) 487-2333

city or town Tallahassee state Florida zip code 32399-0250

Additional Documentation

Submit the following items with the completed form:

Continuation Sheets

Maps

- A **USGS map** (7.5 or 15 minute series) indicating the property's location.
- A **Sketch map** for historic districts and properties having large acreage or numerous resources.

Photographs

Representative **black and white photographs** of the property.

Additional items

(check with the SHPO or FPO for any additional items)

Property Owner

(Complete this item at the request of SHPO or FPO.)

name Town of Interlachen

street & number 311 Atlantic Ave. telephone 904-684-3811

city or town Interlachen state FL zip code 32158

Paperwork Reduction Act Statement: This information is being collected for applications to the National Register of Historic Places to nominate properties for listing or determine eligibility for listing, to list properties, and amend listings. Response to this request is required to obtain a benefit in accordance with the National Historic Preservation Act, as amended (16 U.S.C. 470 et seq.).

Estimated Burden Statement: Public reporting burden for this form is estimated to average 18.1 hours per response including time for reviewing instructions, gathering and maintaining data, and completing and reviewing the form. Direct comments regarding this burden estimate or any aspect of this form to the Chief, Administrative Services Division, National Park Service, P.O. Box 37127, Washington, DC 20013-7127; and the Office of Management and Budget, Paperwork Reductions Projects (1024-0018), Washington, DC 20503.

United States Department of the Interior
National Park Service

NATIONAL REGISTER OF HISTORIC PLACES
CONTINUATION SHEET

Section number 7 Page 1 INTERLACHEN HALL, INTERLACHEN,
PUTNAM COUNTY, FLORIDA

SUMMARY

Interlachen Hall is located at 215 Atlantic Avenue, Interlachen, Putnam County, Florida. The two-story frame building has horizontal wooden siding, a hip roof, and was built in 1892. The main façade has a first story incised porch with four large square columns.

SETTING

Interlachen is a small town with a population of about 1400. It is located fifteen miles directly west of the Putnam County seat, Palatka. The town is laid out on a grid, which is modified by several lakes, and a diagonal railroad route. The lot that Interlachen Hall occupies, however, is not rectangular because the railway cuts the northern boundary at a diagonal. The small community is predominately single homes on large lots, and mature trees occupy most lots. A main thoroughfare, State Road 20 runs east/west through the town, and County Road 315 runs north/south east of the earliest platted development. State Road 20 skirts the northern edge of the earliest platted development; however, historic development and resources are present north of the road. The railroad tracks have been taken up and a broad meridian park has taken its place.

PHYSICAL DESCRIPTION

Exterior

Interlachen Hall is a two-story frame vernacular structure with Italianate Style elements. The rectangular hall is oriented north to south and rests upon brick piers. The windows are filled with tall 2/2, double-hung wooden sashes (7' tall by 2'6" wide).

The main (north) façade has a recessed front concrete porch that spans the elevation (Photo #1). The centrally located main entry is two wooden doors with two panels filled with boards set diagonally (Photos #2&7). A single window is to the west of the entrance, and a single door is to the east, where a single window originally was located. Four large square chamfered columns are evenly spaced across the porch, supporting the second story. The columns have capitals formed from large molding. Paneled piers with cornice tops occupy the bottom third of the columns. The second story has two windows aligned with the window and single door on the first story. A sign reading "Interlachen Hall 1892" is centered between the windows (Photo #3). The enclosed eaves have four pairs of large sculpted brackets.

The east elevation contains four windows on the first story (Photo #4). Five windows are on the second story; four aligned with those on the first story, and one is within the overhang of the front porch. A brick internal chimney pierces the roof at the center of the elevation. The chimney's location prevents the fenestration from being symmetrical, shifting the center windows to the south. Six pairs of brackets are within the eaves. Visible to the south of the main block is a one-story shed extension with one small square fixed-light window. It has a metal roof, and rests on concrete piers on concrete pads.

United States Department of the Interior
National Park Service

**NATIONAL REGISTER OF HISTORIC PLACES
CONTINUATION SHEET**

Section number 7 Page 2 **INTERLACHEN HALL, INTERLACHEN,
PUTNAM COUNTY, FLORIDA**

The south (rear) elevation contains the one-story shed extension off-center to the east. The extension has a pair of two small fixed light windows (Photo #5). On the main block, a single window is in the wall to the west. The second story contains two windows. Marks indicate where four pairs of brackets within the eaves have been removed.

The west elevation has the fenestration pattern similar to that on the east with two exceptions (Photo #6). On the first story, the northern most window is not present, and on the second story, the second from the south window is occupied by a single door. A single flight metal stairwell accesses the door. The pairs of eaves brackets have been removed from the elevation.

Interior

The original wooden floors remain, as do the tongue and groove ceiling, and vertical tongue and groove wainscoting. Some of the plaster walls have been replaced with sheet rock. The staircase, main doors, and all wooden trim is original. Within the main double doors is an entry hall (Photo #7). Two bathrooms and a dog-leg stairway are located on the west side of this hall. The original town jail was once located under the stairs where the bathroom is currently. An interior door to the east provides access to a small room that contains the single exterior door in the north wall (Photo #8). The room has wainscoting dating from the 1970s when the building was used as a library. Through a door south of the entry hall is the great/assembly room that contains benches, chairs and tables (Photo #9). Two square wooden posts are along the central axis of the room to support the second story. In the northeast corner is an iron stove beside an enclosed chimney (Photo #10). Remaining in the room is a massive table with ornate legs that was used by the original town council. To the south of the great room is the kitchen which is located in the one-story shed addition (Photo #11). It has particle board walls and acoustic tile ceiling.

The second floor consists of a great room with a stage riser at the south end (Photo #12). The floor is accessed by a dog-leg wooden stairway with balustrade on the second floor supported by carved newels and balusters (Photos #13&14). The wooden floors, wainscoting, ceiling, and trim are original. Damaged lath and plaster walls above the wainscoting still exist behind contemporary wood paneling.

ALTERATIONS

A kitchen was added onto the back of the hall, probably in the 1940s. The interior door into the kitchen was the location of an original window in the south elevation. Interlachen Hall housed the local library starting in 1973. This change in use resulted in the addition of the single door into the main porch. The original wooden porch floor was removed and replaced with concrete and ramp in 1976 to provide wheelchair access. In 1988 a rolled asphalt roof was added, and some damaged interior plaster walls were repaired. The brackets in the eaves probably were removed from the south and west elevations when the roof was repaired in 1988. In 1998, the asphalt on the roof was replaced with metal, restoring the historic character of that feature.

**United States Department of the Interior
National Park Service**

**NATIONAL REGISTER OF HISTORIC PLACES
CONTINUATION SHEET**

Section number 8 Page 1 **INTERLACHEN HALL, INTERLACHEN,
PUTNAM COUNTY, FLORIDA**

SUMMARY

Interlachen Hall is nominated to the National Register for its significance on the local level under Criteria A and C in the areas of Social History and Architecture. The Interlachen Hall has functioned as the city government and community meeting center since its construction in 1892. The frame vernacular building was the town's first and only municipal, community meeting hall building through the historic period, and was given distinction by its large columns and Italianate Style elements, and the extensive use of pine lumber on the interior.

HISTORIC AND ARCHITECTURAL CONTEXT

In the 1870s, the ports at Tampa and Charlotte Harbor were the natural ports for trade with Cuba, and the State of Florida encouraged commercial development by donating land for railroad construction to these ports. The Florida Southern Railroad began construction in 1880, from Palatka, to Gainesville, to Port Charlotte. The state gave acreage to the railroad company in increments as the line was put into operation. The railroad earned money by selling the property along their corridor, and encouraged the development of towns along the route. The rail route generally followed the older Palatka-Micanopy road. An intersecting road to Ft. Brooks (Highway 315) was chosen as a logical place for the company to put a depot. Mr. Oliver H. Parker owned a 160 acres where Interlachen is now. In exchange for the company platting his land, he gave them 6 blocks of the plat. The plat was created in 1880 by W.C. Valentine. The newly platted community at the intersection of Ft. Brook's Road and the Palatka-Micanopy Road was initially called Blue Pond. The name Interlachen, "between the lakes," was adopted about 1882. The lakes were Blue Pond, soon renamed Lake Lagonda, to the south, and Lake Chipco on the north. The town grew once the depot was built, and rail service began in August of 1881. The Florida Southern Railroad operated until 1903 when they transferred all properties to the Atlantic Coast Line.

Local investors were interested in a commercial center for their local agricultural products. Out of state investors from Springfield, Ohio, and Boston, wanted a quiet resort community, and speculative land sales. By the early 1890s, Interlachen had three hotels and was the center of commerce for citrus growers. The Lagonda Hotel, in operation by December of 1886, was a meeting place for some local organizations. A company of Springfield businessmen built another hotel, the Interlachen Hotel, in the middle of town, and adjacent to the railroad. Interlachen was known as a quiet resort community.

The portion of Block #9 where Interlachen Hall is located was subject to fast, speculative buying. Benjamin J. Grooms bought the lot for \$100.00 on February 17, 1882. It was bought from George G. Decker who had purchased it and a larger portion of the block the same day for \$75. Grooms was in the grocery business. He brought his clerk, C. C. Barbour, into the grocery firm as a partner, and they built the Grooms and Barbour Store in Interlachen in the winter of 1883-84. It was in a good central location, and Barbour operated the store and quickly became part of Interlachen society. He began hosting Democratic Party meetings in the store. Grooms was forced to declare bankruptcy in 1890, and his properties were sold to pay the creditors. On

**United States Department of the Interior
National Park Service**

**NATIONAL REGISTER OF HISTORIC PLACES
CONTINUATION SHEET**

Section number 8 Page 2 **INTERLACHEN HALL, INTERLACHEN,
PUTNAM COUNTY, FLORIDA**

May 12, 1890, the Town of Interlachen acquired its first property, Grooms' lot, for \$375 in the court-directed sale. The Grooms and Barbour grocery store was valued at \$275 to \$300. This store was converted into the first Interlachen Town Hall.

Architectural Context

Frame vernacular construction techniques and forms are used by lay or self-taught builders. The techniques and forms reflect available skills, materials, environment, and the preferences of the owners and builders. The industrial revolution permitted a standardization of building materials and parts, which exerted a pervasive influence over vernacular building design. Popular magazines disseminated information about building trends and styles throughout the country, and railroads provided affordable distribution of manufactured building products.

Italianate Style architecture was popular from the 1840's – 1880s, and was a Romantic, Eclectic form of building. It incorporated numerous elements in Italian farm houses and Renaissance building within American construction, including the use of decorative brackets within eaves. Tall, narrow, frequently arched windows, usually with 1/1, or 2/2 muntin divisions within the sash, and usually with hooded or pedimented tops. Porches, cornices and windows were subject to ornamental treatments. Columns, whether classic or chamfered square, were slender.

HISTORIC AND ARCHITECTURAL SIGNIFICANCE

On November 9, 1890, the first town hall "went up in flames very mysteriously," a Gainesville newspaper reported. On the site of the original town hall, the now existing Interlachen Hall was completed in 1892, and became the second town hall.

The first floor contained the town offices, jail, and meeting room. The second floor, an open, high ceilinged room, with a raised stage for speakers or entertainers, was available for use by the community. After 1900, when the last of the large hotels had burned, it was the only meeting room in town. The second floor had other functions. Performers on the Chautauqua circuit made many appearances. Although Saturday night was Dance Night, sometimes Thursday nights were also. Minnie Pearl is the most famous person to have entertained there.

The block directly to the east of Interlachen Hall has always been an open field. In the early years, political rallies and barbecue dinners were held there. Beginning in the 1920s, the field was used for baseball. If rain interfered with any of these events, the people took refuge at Interlachen Hall.

The following newspaper accounts from the Palatka newspaper and others demonstrate the uses of Interlachen Hall:

United States Department of the Interior
National Park Service

**NATIONAL REGISTER OF HISTORIC PLACES
CONTINUATION SHEET**

Section number 8 Page 3 **INTERLACHEN HALL, INTERLACHEN,
PUTNAM COUNTY, FLORIDA**

October 1, 1893, THE DAILY NEWS, (Palatka)

“A group of Interlachen citizens led by Pastor Clarence Mellor met in Town Hall on September 3rd in order to draft plans to build a sanctuary for the Methodist Church.”

Friday, August 21, 1896, THE DAILY NEWS

“The democrats of Interlachen met at the City Hall last Week and organized a ‘Free Silver, Bryant and Sewall Club’.”

Tuesday, September 13, 1921. THE DAILY NEWS

“The young people enjoyed a jolly good time at the Hall Tuesday evening at a ‘tacky party,’ The costumes worn being clever and original, and some mirth provoking stunts were rendered by the young people.”

Thursday, December 1, 1921, THE DAILY NEWS

“Thanksgiving day passed very pleasantly here; a number of family dinner parties were enjoyed by those participating, and a community dinner in the Hall, ... attracted many from both town and country. A very interesting and well-rendered program by the public school children followed the dinner.”

Thursday, January 12, 1922, INTERLACHEN NEWS

“A combination musical show and minstrel performance given Friday evening in the Hall by a traveling troupe of young men drew a full house, ... Later, relieved of their makeup, the young musicians furnished most excellent music for dancing. The dance was repeated on Saturday night with a number of young people from nearby towns coming to enjoy the occasion.”

Friday, April 2, 1926, INTERLACHEN NEWS

“The Ladies’ Aid Society had a very pleasant and financially successful supper and food sale Friday evening at the Hall,”

Friday, May 13, 1926, INTERLACHEN NEWS

“The local Chamber of Commerce met on Friday evening in the Town Hall to discuss school and civic needs of the community at large.”

November 6, 1931, THE WEEKLY NEWS, (Interlachen)

“The Tourist club held their first get-together at the Town hall on Tuesday evening last.”

**United States Department of the Interior
National Park Service**

**NATIONAL REGISTER OF HISTORIC PLACES
CONTINUATION SHEET**

Section number 8 Page 4 **INTERLACHEN HALL, INTERLACHEN,
PUTNAM COUNTY, FLORIDA**

Many organizations met in Interlachen Hall. The following list outlines this variety:

Bert Hodge Post of the American Legion	The Tourist Club
The Sunshine Club	Young Peoples Christian Endeavor
Putnam County Poultry Club	Interlachen Women's Club
B & PW Club	The Epworth League
Interlachen Lodge #254 F & AM	The Interlachen Literary Club
The McKinley & Hobart "Shouters"	The Ladies Afternoon Club
The Chamber of Commerce	The Orange Growers Association
The Boy Scouts	The Poultry Social Club
County Federation of Women's Clubs	The Ladies Aid Society
The Grape Growers Association	The Hancock Club
Thalien Club	The Interlachen Social Club
The Free Silver, Bryant & Sewall Club	

The Interlachen Hall was the first, and throughout the historic period, the only municipal, community meeting hall for the Town of Interlachen. The two story frame vernacular building was designed with several unique elements which gave it distinctiveness and style. The building's size and use of four large square columns on the first story gave it a formal and imposing appearance. The tall, narrow windows, and brackets under the eaves on a hip roof gave the building an Italianate Style elements. The building's interior is a distinctive and fine example of a period when Florida's long leaf pine lumber was plentiful and a common material for local construction. The unpainted wooden floors, vertical wainscoting, and tongue and groove ceilings on both floors, in combination with the paneled main doors and carved stairway newels and balusters, give the interior a prominent texture and feel. With the building's high degree of architectural integrity, workmanship and materials, it is an excellent example of vernacular frame construction with eclectic style elements.

United States Department of the Interior
National Park Service

**NATIONAL REGISTER OF HISTORIC PLACES
CONTINUATION SHEET**

Section number 9 Page 1 **INTERLACHEN HALL, INTERLACHEN,
PUTNAM COUNTY, FLORIDA**

BIBLIOGRAPHY

The Daily News (Palatka newspaper), August 21, 1896; September 13, 1921; December 1, 1921;

“Historic Preservation in Interlachen Florida,” College of Architecture, University of Florida, July 1990.

Interlachen News (Interlachen newspaper), January 12, 1922; April 2, 1926; May 13, 1926

Jacobs, Harry, “Interlachen Memories,” unpublished. Copy with Interlachen Historical Society.

Putnam County Property Appraiser’s Office.

Topper, Sean, “Interlachen Hall Restoration Project,” University of Florida, December 30, 1993.

The Weekly News (Interlachen newspaper), November 6, 1931

**United States Department of the Interior
National Park Service**

**NATIONAL REGISTER OF HISTORIC PLACES
CONTINUATION SHEET**

Section number 10 Page 1 **INTERLACHEN HALL, INTERLACHEN,
PUTNAM COUNTY, FLORIDA**

VERBAL BOUNDARY DESCRIPTION

Parcel #0090-0030, Block #9, Interlachen Map Book 1, pages 8, 9.

BOUNDARY JUSTIFICATION

This boundary encompasses the property historically associated with the Interlachen Hall.

**United States Department of the Interior
National Park Service**

**NATIONAL REGISTER OF HISTORIC PLACES
CONTINUATION SHEET**

Section number _____ Photos _____ Page 1 **INTERLACHEN HALL, INTERLACHEN,
PUTNAM COUNTY, FLORIDA**

PHOTOGRAPHIC LIST

1. Interlachen Hall, 125 Atlantic Ave., Interlachen
2. Putnam County, Florida
3. Mary Lou Dawson
4. Dawson, Historical Society of Interlachen
5. November 1997
6. Main (north) façade, facing south
7. Photo #1 of 14

Items 1-5 are the same for the following photographs.

6. Porch details, looking southwest
7. Photo #2 of 14

6. Detail of façade second story, looking southeast
7. Photo #3 of 14

6. East and north elevations, looking southwest
7. Photo #4 of 14

6. South elevation, looking north
7. Photo #5 of 14

6. West elevation, looking east
7. Photo #6 of 14

6. Interior entry hall with main doors, looking north
7. Photo #7 of 14

6. East front room, looking south
7. Photo #8 of 14

6. Main room, looking northwest
7. Photo #9 of 14

6. Main room, looking northwest
7. Photo #10 of 14

**United States Department of the Interior
National Park Service**

**NATIONAL REGISTER OF HISTORIC PLACES
CONTINUATION SHEET**

Section number _____ Photos _____ Page 2

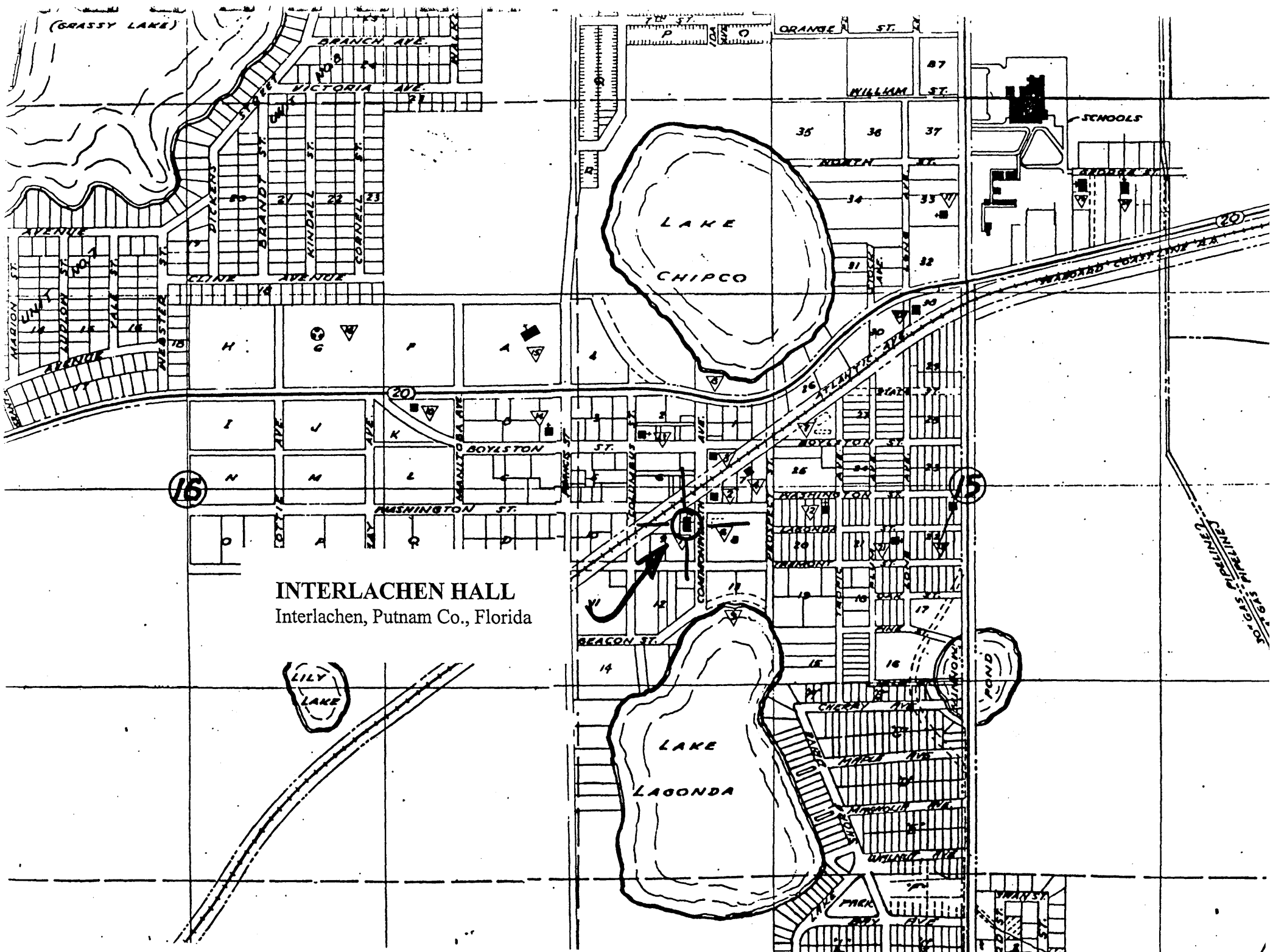
**INTERLACHEN HALL, INTERLACHEN,
PUTNAM COUNTY, FLORIDA**

- 6. Kitchen, looking southwest
- 7. Photo #11 of 14

- 6. Second floor meeting hall, looking north
- 7. Photo #12 of 14

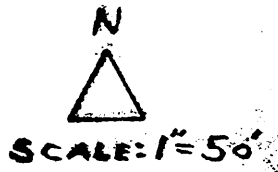
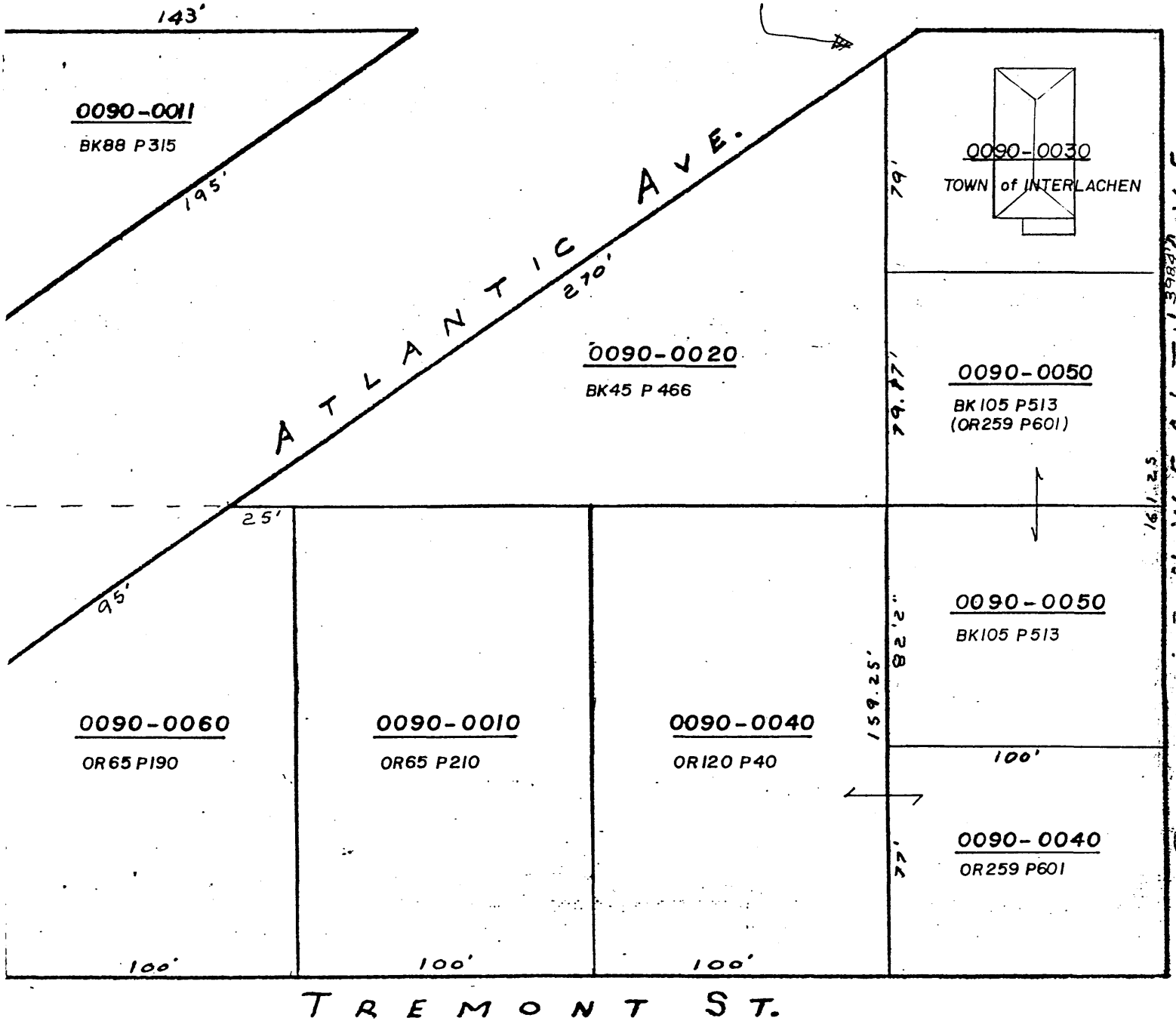
- 6. Stairway railing and balusters, looking northwest
- 7. Photo #13 of 14

- 6. Detail of newel and balusters, looking southeast
- 7. Photo #14 of 14

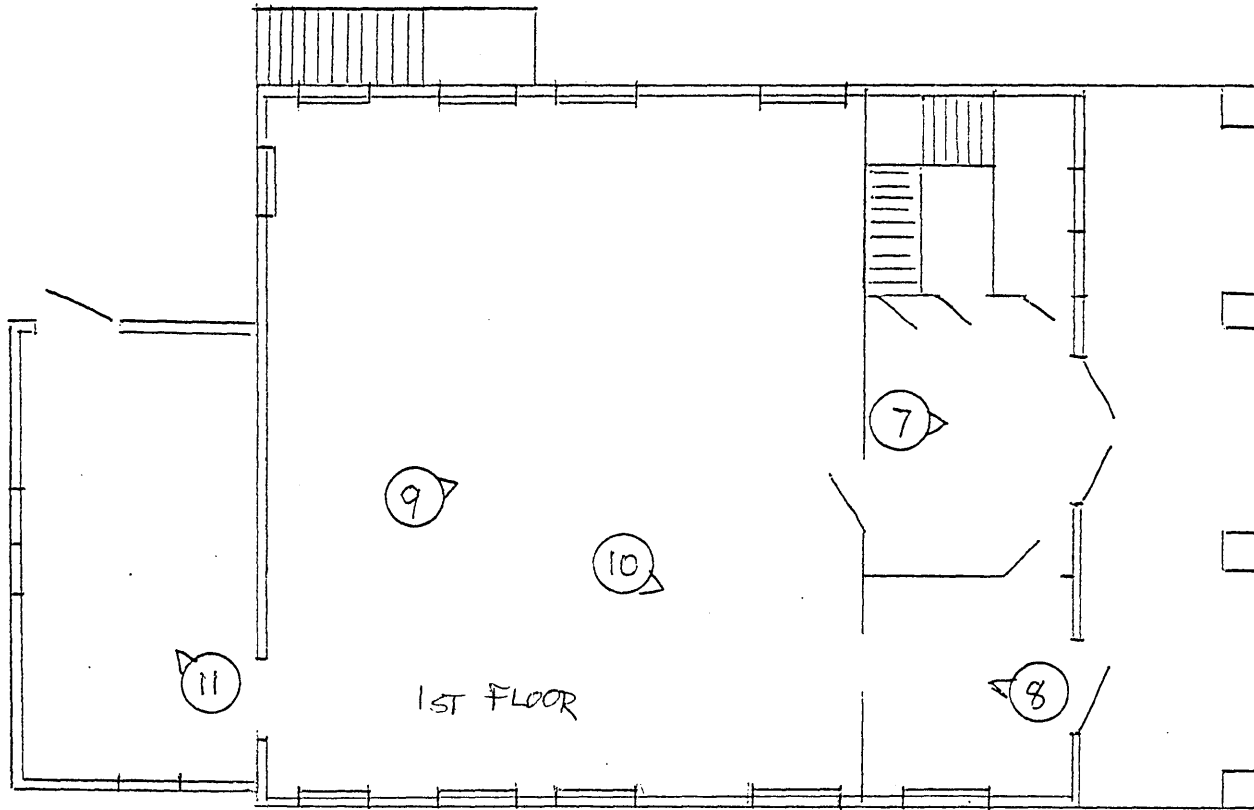
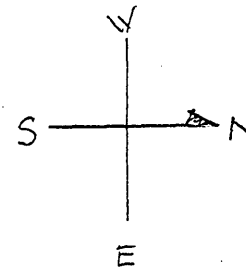


INTERLACHEN HALL
Interlachen, Putnam Co., Florida

INTERLACHEN HALL, INTERLACHEN
PUTNAM COUNTY, FLORIDA



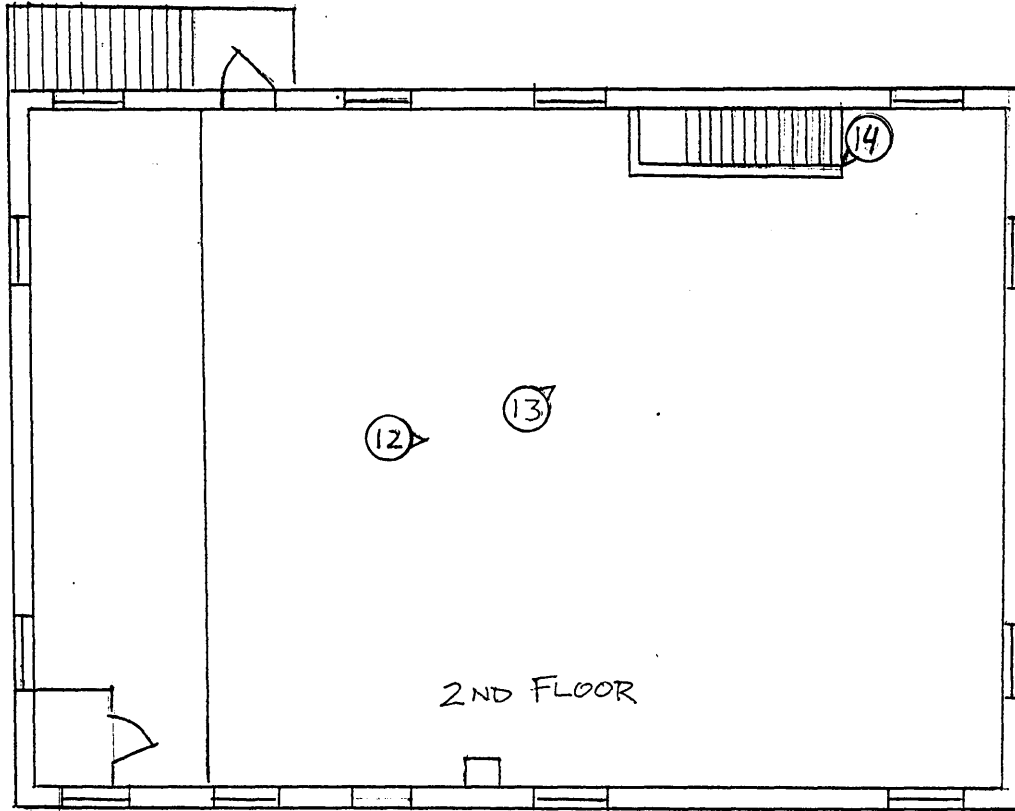
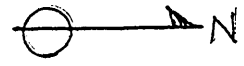
INTERLACHEN - BLOCK 9



INTERLACHEN HALL
Interlachen, Putnam County, Florida

Floor Plan & Photo Diagram
(not to scale)

4



INTERLACHEN HALL
Interlachen, Putnam Co., FL

Floor Plan & Photo Diagram
(not to scale)