

STANDING STRUCTURES SURVEY

Site Number #3

I. PARISH Rapides

MUNICIPALITY N/A

USGS QUAD Rapides, LA

Township 4N Range 1W Section 83

TYPE OF PROPERTY Residence

NAME (common) (Vanderlick House)

NAME (historic) Geneva

ADDRESS Hwy, 496, @ 2½ miles from
 Alexandria vic.

DATE OF CONSTRUCTION 1829; c.1850

II. 1. Condition Good

2. Style Federal - Greek Revival

3. Floor Plan See below

4. Building Material Wood frame

Photos attached

III. Physical description of property and historic significance

Geneva is a galleried house four rooms wide with a central chimney** There is also a c.1850 rear "L" wing. Evidently the original front gallery was replaced in about 1850. The front entrance with its transom and side lights was also installed in about 1850. The house features two Adamesque mantels and a Greek Revival aedicule style mantel in the rear wing. The Adamesque mantels, with their panels, multiple moldings, and molded pilasters, feature the area's most elaborate Federal woodwork. Aside from the mantels and the six panel doors, the interiors are plain.

(**chimney top removed)

Since 1850 two rear rooms have been appended, aluminum siding has been installed, and a false gallery has been added. The aluminum siding and the rear appendages have had little visual impact. And despite the false gallery, the Neo-Classical style of Geneva remains discernible. Also, the present front steps are modern replacements.

To the rear of the house is a c.1900 board and batten shed. It helps establish Geneva's identity as a plantation house by showing that even modest plantation houses had outbuildings. It is listed as a contributing element.

UTMs: 15/546320/3464320

IV. Recorded by N/A

Date

For

V. Sources consulted N/A

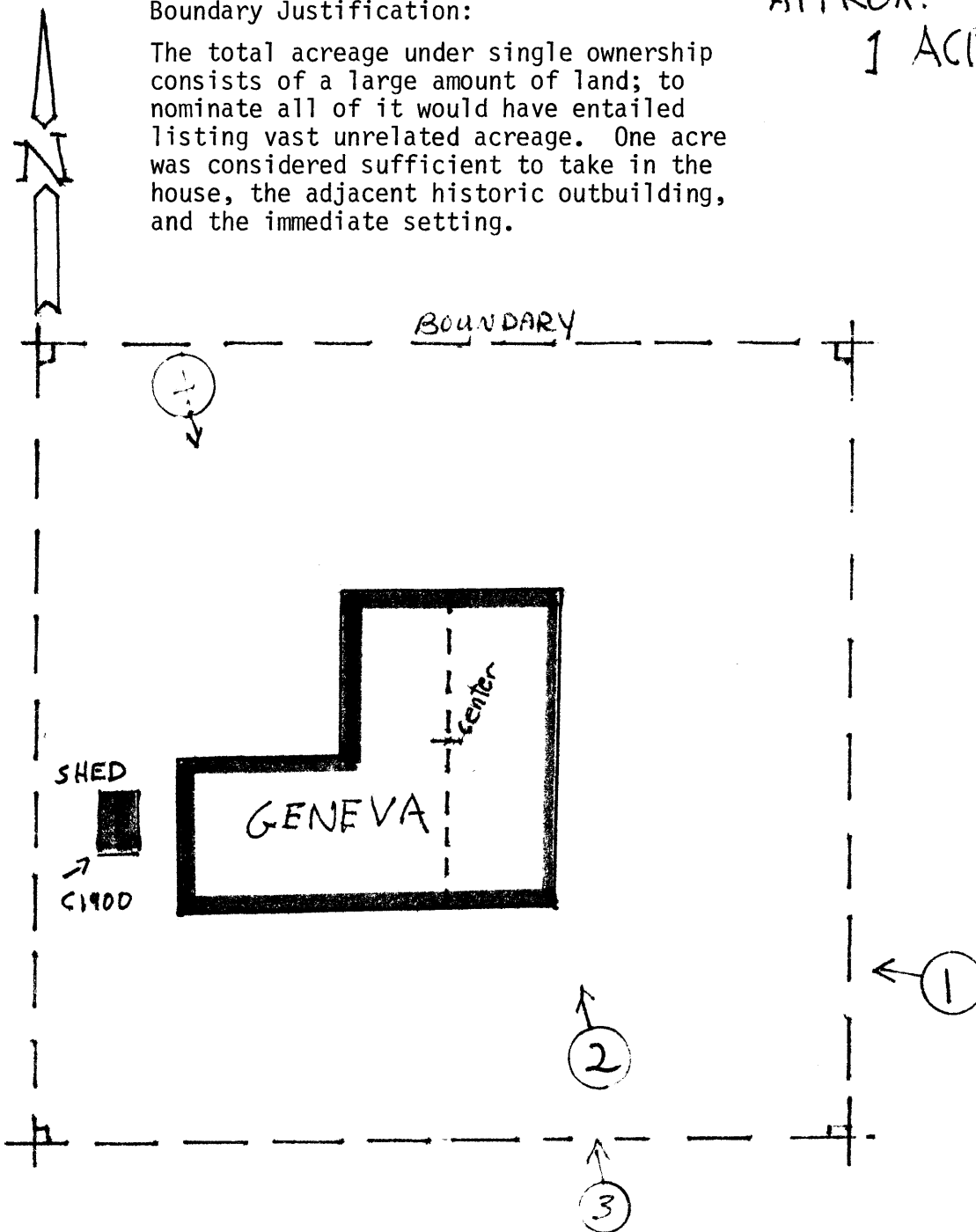
Bayou Rapides Thematic Nomination
Rapides Parish, LA

Boundary Justification:

The total acreage under single ownership consists of a large amount of land; to nominate all of it would have entailed listing vast unrelated acreage. One acre was considered sufficient to take in the house, the adjacent historic outbuilding, and the immediate setting.

APPROX.

1 ACRE



BOUNDARIES COMPRISE A 200' BY 200' SQUARE WHICH FOLLOWS THE CARDINAL DIRECTIONS & WHICH CENTERS ON THE MIDDLE OF THE ROOF RIDGE OF THE MAIN BLOCK OF THE HOUSE

NOT TO SCALE