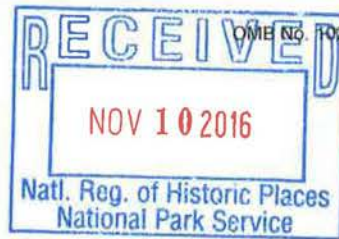


United States Department of the Interior
National Park Service



895

National Register of Historic Places Registration Form

This form is for use in nominating or requesting determinations for individual properties and districts. See instructions in National Register Bulletin, *How to Complete the National Register of Historic Places Registration Form*. If any item does not apply to the property being documented, enter "N/A" for "not applicable." For functions, architectural classification, materials, and areas of significance, enter only categories and subcategories from the instructions. Place additional certification comments, entries, and narrative items on continuation sheets if needed (NPS Form 10-900a).

1. Name of Property

historic name Brainerd Bungalow Historic District

other names/site number _____

Name of Multiple Property Listing "Chicago Bungalows" - Multiple Property Listing

(Enter "N/A" if property is not part of a multiple property listing)

2. Location

street & number Roughly bounded by: North: 89th Street, East: S. May Street,
South: 95th Street, West: S. Loomis Street

not for publication

city or town Chicago

vicinity

state Illinois

county IL

zip code Cook

3. State/Federal Agency Certification

As the designated authority under the National Historic Preservation Act, as amended,

I hereby certify that this nomination ___ request for determination of eligibility meets the documentation standards for registering properties in the National Register of Historic Places and meets the procedural and professional requirements set forth in 36 CFR Part 60.

In my opinion, the property meets ___ does not meet the National Register Criteria. I recommend that this property be considered significant at the following level(s) of significance: ___ national ___ statewide local

Applicable National Register Criteria: ___ A ___ B C ___ D

[Signature] Signature of certifying official / Title: Deputy State Historic Preservation Officer Date 11-01-16

Illinois Historic Preservation Agency
State or Federal agency/bureau or Tribal Government

In my opinion, the property ___ meets ___ does not meet the National Register criteria.

Signature of commenting official _____ Date _____

Title _____ State or Federal agency/bureau or Tribal Government _____

4. National Park Service Certification

I hereby certify that this property is:

entered in the National Register ___ determined eligible for the National Register

___ determined not eligible for the National Register ___ removed from the National Register

___ other (explain: by Barbara Wyatt 12-27-16)

Signature of the Keeper

Date of Action

Brainerd Bungalow District
Name of Property

Cook County, Illinois
County and State

4. National Park Service Certification

I hereby certify that this property is:

entered in the National Register

determined eligible for the National Register

determined not eligible for the National Register

removed from the National Register

other (explain:) _____

Signature of the Keeper

Date of Action

Brainerd Bungalow Historic District
Name of Property

Cook County, Illinois
County and State

5. Classification

Ownership of Property
(Check as many boxes as apply.)

- private
- public - Local
- public - State
- public - Federal

Category of Property
(Check only **one** box.)

- building(s)
- district
- site
- structure
- object

Number of Resources within Property
(Do not include previously listed resources in the count.)

Contributing	Noncontributing	
585	511	Buildings
0	1	Site (Park)
		Structures
		Objects
586	512	Total

Number of contributing resources previously listed in the National Register

0

6. Function or Use

Historic Functions
(Enter categories from instructions.)

Domestic/Single Dwelling

Domestic/Multiple Dwelling

Education/School

Current Functions
(Enter categories from instructions.)

Domestic/Single Dwelling

Domestic/Multiple Dwelling

Education/School

Park

7. Description

Architectural Classification
(Enter categories from instructions.)

Other: Chicago Bungalow/Craftsman

Materials
(Enter categories from instructions.)

foundation: Concrete

walls: Brick

roof: Asbestos and Asphalt Shingles

other: _____

Brainerd Bungalow Historic District

Name of Property

Cook County, Illinois

County and State

Narrative Description

(Describe the historic and current physical appearance and condition of the property. Describe contributing and noncontributing resources if applicable. Begin with a **summary paragraph** that briefly describes the general characteristics of the property, such as its location, type, style, method of construction, setting, size, and significant features. Indicate whether the property has historic integrity).

Summary Paragraph

The Brainerd Bungalow Historic District is located in Community Area 73 on the southwest side of Chicago in the Washington Heights community, approximately 14 miles from the city's commercial center. The district is roughly bounded by S. May Street to the east, 95th Street to the south, S. Loomis Street to the west, and 89th Street to the north. The following areas are encompassed:

- S. Loomis Street: 9200, 9300, & 9400 blocks
- S. Ada Street: 9000, 9200, 9300 & 9400 blocks
- S. Throop Street: 8900, 9000, 9200, 9300, 9400 blocks
- S. Elizabeth Street: 8900, 9000, 9200, 9300 & 9400 blocks
- S. Racine Avenue: 8900, 9000, 9100, 9200, 9300 & 9400 blocks
- S. May Street: 8900 blocks

Brick Chicago bungalows form the bulk of the district, accounting for 505 of the 528 total contributing primary structures. The overall breakdown of contributing buildings in the district is as follows:

- 15 brick multi-unit apartment buildings
- 4 brick two-flats
- 3 brick two-story single-family homes
- 1 school on the east side of the 9000 S. Elizabeth St. block
- 57 garages built between 1915 and 1931 and belonging to contributing primary structures

There are 52 bungalows that are considered non-contributing to the district due to insensitive alterations. Other non-contributing single-family structures (41) were built outside of the period of significance mostly in the 1940s and 1950s and include brick two-story homes, Cape Cods, and ranch-style homes. The majority of garages (418 of a total 475) are non-contributing. The park bounded by 91st and 92nd Streets, between Throop St. and Racine Ave was established outside of the period of significance and is also non-contributing. The primary era of development in the district was between 1915 and 1931, with 1927 marking the peak of construction. As a result, the patterns of growth are consistent with those of the era, both in terms of individual construction and larger-scale speculative development, underscoring the district's significance as a part of the larger nationwide trend in home construction. Accordingly, the predominant style chosen for single-family residences in the neighborhood was the bungalow, particularly the brick Chicago bungalow. Multifamily dwellings constructed in the era, whether brick two-flats or brick multi-unit apartment buildings, exhibit limestone accents and similar aesthetic features, particularly in materials and ornamentation. The result is a district that is strongly cohesive and unified.

Narrative Description

Brick Chicago bungalows form the bulk of the Brainerd Bungalow Historic district and make up the majority of the primary structures built within the period of significance. The district has 42 known architects, though a few of those architects dominated the district. Over 250 homes in the district did not use an architect, but instead used already-existing plans. Although a variety of architects, developers, and architectural plans contributed to the design and construction of the district, it maintained a uniform scale and cohesiveness throughout its periods of rapid growth with common features such as low-pitched roofs with overhanging eaves, banded or grouped fenestration, decorative brickwork and limestone detailing.

Brainerd Bungalow District

Name of Property

Cook County, Illinois

County and State

The Brainerd Bungalow Historic District contains 93 primary buildings constructed outside of the period of significance, and other non-contributing buildings have been altered in ways that are not easily reversible, rendering them non-contributing to the district. As is typical in most bungalow neighborhoods, there are some dormer additions and attic expansions. If dormers are set far enough back to leave the original façade intact, they do not affect the historic character of the building to the extent that it will be non-contributing. A total of 52 bungalows with dormer/attic/second story additions are conspicuous and/or too large to maintain the original appearance of the primary façade, and are thus non-contributing. An example of a noncontributing dormer is found at 9310 S. Ada (IMAGE 1), and a second story addition can be seen at 9425 S. Loomis (IMAGE 2). The remaining 528 contributing primary structures in the district—which include bungalows, two-flats, multi-unit apartment buildings and a school building—retain much of their original fabric and appearance, as outlined by the registration requirements of the Chicago Bungalow Multiple Property Listing. In addition to these contributing primary structures, there are also 57 contributing brick garages built within the period of significance that maintain much of their original fabric and appearance.

SITE AND SETTING

Brainerd is part of the Washington Heights Community Area, located within Lake Township in Chicago. Washington Heights shares its boundaries with five other community areas: Auburn Gresham to the north, Roseland to the east, Morgan Park to the south, and Beverly to the west. The Brainerd neighborhood is just west of the I-94 Dan Ryan Expressway, and bounded by 89th Street to the north, Princeton Park (Eggleston Avenue) to the east, 95th Street to the south, and S. Beverly Boulevard to the west. The neighborhood has a natural division along S. Vincennes Avenue, which is wider and busier than any other interior streets in the neighborhood, and runs parallel to railroad tracks and an industrial corridor, breaking the continuity of housing. The proposed Brainerd Bungalow Historic District is located in the central-western portion of the neighborhood.

Brainerd is a quiet, tree-lined neighborhood and remains insulated from heavy traffic with homes set back on their lots that do not front onto larger, bordering streets around the periphery of the neighborhood. The proposed Brainerd Bungalow Historic District is largely made up of one-way streets (all of the north-south streets), which prevent traffic and high speed driving through the neighborhood and increases safety for the families who live here. Brainerd Park is located roughly in the center of this portion of Brainerd, and contains fields where baseball, softball, football and soccer teams regularly play, as well as basketball and tennis courts and a playground. There is also a field house building with meeting rooms for the community, which was constructed after the period of significance and is non-contributing to the district. Although the park space has been a feature of the neighborhood since it was originally laid out in the 1910s as it was never gridded out for development like the surrounding streets in the neighborhood, it was established outside of the period of significance and is a non-contributing site. Just north of the park is a high school, which is a contributing structure.

There are 43 block faces within the Brainerd Bungalow Historic District, each containing between 12 and 20 individual lots. The variation in the number of lots is largely due to a difference in street lengths (for example, all streets between 94th and 95th Streets are considerably shorter than all streets between 92nd and 93rd Streets). Lot sizes in the district range from 25 feet wide to 60 feet wide, but the average size of interior lots is approximately 25 feet wide and 125 feet deep. Corner lots and lots occupied by two-flats and multi-unit dwellings are generally wider. All buildings in the district face east or west, with the exception of some primary entrances to multi-unit apartment buildings located along 90th, 91st, 92nd, and 94th Streets. North-south streets in the district are designated one-way traffic and are approximately 30 feet wide. The right-of-way on each block face includes street lawns fronting the street pavement, as well as sidewalks, which are consistently around four feet in depth. The majority of buildings are set back between 15 to 20 feet from the street.

The remaining garages in the district are a mix of brick and frame structures, generally measuring twenty-two by

Brainerd Bungalow District

Name of Property

Cook County, Illinois

County and State

twenty-two feet. Many (418) are not contributing as they have been altered extensively, have been replaced, or have been demolished. Generally, they occupy the rear portion of most lots, with garages on interior lots facing the alleys, and some garages on corner lots facing out onto the street. While they are simple, utilitarian structures, many have face brick that matches the house that they belong to. Sometimes the face brick faces the yard, sometimes it faces outward to the alley, and sometimes the only visible brick is Chicago common brick. Fifty-seven brick garages built during the period of significance that retain their integrity and belong to contributing buildings in the district are also considered contributing structures, such as the garage at 9304 S. Racine (IMAGE 3).

MATERIALS AND STYLISTIC VARIATION

Overview

Bungalow neighborhoods, typically diverse in terms of the occupations and ethnic makeup of their populations, were also commonly the result of a patchwork effort of developers and architects. Some of the most active architects in the district include Sammons, Braucher, McClellan, Joneke, and Johnson. Many of these architects worked on entire block faces—often in conjunction with a single developer—and most had contributed to other Chicago Bungalow Historic Districts in the city, such as North Mayfair, West Chatham, and Rogers Park Manor, and Auburn Gresham. Despite the undeniable influence of a handful of architects and developers, a wide range of speculators and homeowners contributed to the district as a whole, and many developers worked without the direct involvement of an architect using easily purchased and replicated plans. This has left a distinct but cohesive stamp on the neighborhood.

While bungalows make up the bulk of the buildings in the district, there are also a number of multi-family residential structures. Two-flats and larger apartment buildings were built alongside bungalows in the 1910s and 20s and can be found on many streets in the area. Because many were built during the same period and often by the same developers and architects, their style, setbacks, and materials contribute to the varied yet rhythmic streetscapes. Features such as projecting bays, grouped fenestration, creative and decorative brickwork, and limestone detailing help to visually connect them to neighboring bungalows, while allowing them to remain distinct. An example of this can be seen in the two-flats from the 9210 and 9212 S. Ada where the buildings have similar forms and set-back entranceways, but each has distinct brick patterning, slightly varied parapet designs, and unique limestone detailing. Many preferred to purchase two-flats during this period (and even today) because they stretched beyond the concept of the single family home while reflecting the basic bungalow floor plan on each floor while helping to defray homeownership costs or provide housing for extended families.

The contributing bungalows in the district are one-and-one-half story structures that manifest all of the typical details and forms mentioned. Flat bays with offset entrances (IMAGE 4) are the most common style of bungalow, followed by polygonal bays (IMAGE 5). The flat bay is the simplest of the Chicago bay types, as the façade has no projection and the windows are flush with the wall. When paired with an offset porch, as most are in this district, the flat bay generally features a set of ribbon windows in a grouping of three or four into a single architectural frame. This type of bay is associated with more modest Chicago bungalows and typically has very little ornamentation. Polygonal bays—some with three sides and some with five—are also common in the district. The three-sided bays generally have little ornamentation and side entrances, and encompass the entire front of the bungalow. Five-sided bays in the district tend to protrude significantly from the façade wall and have offset entrances. On some streets, such as the 9000 and 9200 blocks of S. Racine, the bays are used as a focal point to showcase art glass windows and elaborate detailing. Open front porches are a rarity in the district, likely because these porches were typically built in the 1910s and the majority of the area was developed in the 1920s. Entrances are either located on the primary façade but offset, or they are found along the side of the bungalow.

Most of the bungalows have a typical, low-pitched, hipped roof that adds a horizontal emphasis to the building, though there is some variation in the rooflines, especially at the northern end of the district. Many bungalows along

Brainerd Bungalow District
 Name of Property

Cook County, Illinois
 County and State

the 8900 blocks of Elizabeth, May, Racine, and Throop have frame gabled roofs, often with a clipped peak (IMAGE 6). To add some interest to street faces, developers often alternated pointed gable roofs with clipped gables or gabled roofs with hipped roofs. The majority of the roofs in the district are covered in either modern asphalt tile or asphalt sheet roofing over what was likely original asbestos shingle roofing.

Brick is, without a doubt, the most common material used in the neighborhood for both contributing and non-contributing structures. Buildings occupying corner lots are usually clad in face brick on both street-facing elevations, although many corner lots were developed in the 1940s and 1950s. These corner lots developed after the period of significance consist of two-story homes, cape cods, or ranches, which maintain the rhythm and setbacks of the bungalows that dominate the rest of the street. Buildings resting on interior lots feature face brick only on the primary façade, though it wraps around the corners to the side walls. By wrapping the face brick in this way, it gives the illusion to passersby that it clads the entire structure—an illusion further aided by the close grouping of the buildings. Face brick in the district ranges from tans to yellows to deep reds and browns, as is typical of bungalow districts, and is used decoratively as a means to give each home character, despite the similar massing and layout designs. Secondary materials include: limestone, used for brackets, window lintels and sills, copings, and decorative accents throughout the district; and wood elements used to construct gables, doors, window frames, and back porches, most of which are now enclosed.

While some of the bungalows and lot sizes are slightly larger than others, the general sizing and spacing of bungalows is consistent—the range in bungalow sizes can be seen in the inventory below, but differences are not dramatic. Even multi-family buildings and homes built after the period of significance, such as cape cods and raised ranches, are to scale with contributing buildings, appealing to the same tradition of working class homeowners.

Complete Inventory for the Bungalow Historic District

Please note:

C=Contributing

NC=Non-Contributing

Only contributing garages are included on the inventory. All garages are italicized and garage dates reflect the dates found on sundry permits, not the dates of completion.

Status	Number	Street	Building Type	Owner	Architect	Contractor	Net Area	Cost	Final Report (date)	Notes
S. LOOMIS STREET										
C	9201-3	S. Loomis	Multi-Unit	x	x	x	x	x	c. 1927	
<i>C</i>	<i>9201-3</i>	<i>S. Loomis</i>	<i>Garage</i>	<i>x</i>	<i>x</i>	<i>x</i>	<i>x</i>	<i>x</i>	<i>7/29/26</i>	
NC	9205	S. Loomis	Single Family	x	x	x	x	x	c. 1899	Massing + Cladding Altered
C	9211-9213	S. Loomis	Multi-Unit	x	x	x	x	x	c. 1928	
<i>C</i>	<i>9211-9213</i>	<i>S. Loomis</i>	<i>Garage</i>	<i>x</i>	<i>x</i>	<i>x</i>	<i>x</i>	<i>x</i>	<i>c. 1928</i>	
C	9215	S. Loomis	Chicago Bungalow	Kelly	x	Kocher	24x42x20	5500	4/30/20	
C	9219	S. Loomis	Chicago Bungalow	Kelly	x	Kocher	24x42x20	5500	4/30/20	
C	9223	S. Loomis	Chicago Bungalow	x	x	x	x	x	c. 1919	

Brainerd Bungalow District
 Name of Property

Cook County, Illinois
 County and State

C	9225	S. Loomis	Chicago Bungalow	x	x	x	x	x	c. 1927	
C	9229	S. Loomis	Chicago Bungalow	Kelly	x	Kocher	24x42x20	5500	4/30/20	
C	9233	S. Loomis	Chicago Bungalow	Kelly	x	Kocher	24x42x20	5500	4/30/20	
NC	9239	S. Loomis	Ranch	x	x	x	x	x	c. 1954	Out of P.O.S.
C	9241	S. Loomis	Chicago Bungalow	Ready	Kocher	Westin	24x47x20	5000	6/11/20	
C	9243	S. Loomis	Chicago Bungalow	Ready	Kocher	Westin	24x47x20	5000	6/1/20	
C	9249	S. Loomis	Chicago Bungalow	Watson	Watson	Zeymer Bros	24x60x20	4500	2/27/27	
C	9251	S. Loomis	Brick Two-story	R. Greenleaf	x	C. Schleyer	26x22x28	8000	6/3/25	
NC	9255	S. Loomis	Brick Two-story	x	x	x	x	x	c. 1948	Out of P.O.S.
C	9300	S. Loomis	Chicago Bungalow	Ready	Kocher	Paulsen	25x48x20	5000	1/7/21	
C	9301	S. Loomis	Chicago Bungalow	Joronski	Striff	Klarich	26x65x18	9000	11/6/30	
C	9301	S. Loomis	Garage	x	x	x	x	x	c. 1930	
C	9306	S. Loomis	Chicago Bungalow	Stein	owner	Kemper	22x60x18	5750	5/4/27	
NC	9307	S. Loomis	Cape Cod	x	x	x	x	x	c. 1940s	Out of P.O.S.
C	9310	S. Loomis	Chicago Bungalow	Kelly	x	Westin	24x42x20	5500	4/28/20	
C	9311	S. Loomis	Chicago Bungalow	Kelly	x	Westin	24x42x20	5500	4/28/20	
C	9315	S. Loomis	Chicago Bungalow	Wightman		Bloomberg	25x60x18	6000	5/16/27	
C	9318	S. Loomis	Brick Two-Flat	x	x	x	x	x	c. 1921	
C	9318	S. Loomis	Garage	x	x	x	x	x	c. 1930	
C	9320	S. Loomis	Chicago Bungalow	Ready	Kocher	Westin	24x42x20	5000	6/16/20	
C	9321	S. Loomis	Brick Two-story	x	x	x	x	x	c. 1926	
C	9322	S. Loomis	Chicago Bungalow	Ready	Kocher	Westin	24x42x20	5000	6/16/20	
C	9325	S. Loomis	Chicago Bungalow	E. Holmes	Lund	Nelson	25x48x20	5500	4/27/20	
C	9326	S. Loomis	Chicago Bungalow	x	x	x	x	x	c. 1920	
C	9327	S. Loomis	Chicago Bungalow	E. Holmes	Lund	Nelson	25x48x20	5500	4/27/20	
C	9330	S. Loomis	Chicago Bungalow	Schmaza	x	Erlandson	24x65x18	6000	11/7/27	
C	9330	S. Loomis	Garage	x	x	x	x	x	c. 1927	
C	9333	S. Loomis	Chicago Bungalow	J. Jonkers	Stolt and Larsen	J Gjaltema	25x65x20	8000	5/10/28	
C	9334	S. Loomis	Chicago Bungalow	x	x	x	x	x	c. 1922	
C	9335	S. Loomis	Chicago Bungalow	Ready	Kocher	Paulsen	24x43x20	4500	1/7/20	
C	9338	S. Loomis	Chicago Bungalow	x	x	x	x	x	c. 1921	
C	9339	S. Loomis	Chicago Bungalow	Ready	Kocher	Paulsen	24x43x20	4500	1/7/20	

Brainerd Bungalow District
 Name of Property

Cook County, Illinois
 County and State

C	9340	S. Loomis	Chicago Bungalow	Watson	x	Zeymer Bros	24x53x18	4000	3/7/27	
C	9343	S. Loomis	Chicago Bungalow	Watson	x	Zeymer Bros	24x53x18	4000	3/7/27	
C	9343	S. Loomis	Garage	x	x	x	x	x	c. 1927	
C	9344	S. Loomis	Chicago Bungalow	Watson	x	Zeymer Bros	24x53x18	4000	3/7/27	
C	9346	S. Loomis	Chicago Bungalow	x	x	x	x	x	c. 1927	
C	9347	S. Loomis	Chicago Bungalow	Westen	Lund	Scaberg	28x43x18	3500	7/3/19	
C	9347	S. Loomis	Garage	x	x	x	x	x	c. 1919	
C	9349	S. Loomis	Chicago Bungalow	Jonkers	Stolt and Larsen	Gjaltema	25x65x20	8000	5/10/27	
C	9349	S. Loomis	Garage	x	x	x	x	x	c. 1927	
NC	9350	s. Loomis	Chicago Bungalow	Jonkers	Stolt and Larsen	Gjaltema	25x65x20	8000	5/10/27	2 nd Story Addition
C	9353	S. Loomis	Chicago Bungalow	Jonkers	Stolt and Larsen	Gjaltema	25x65x20	8000	5/10/27	
C	9354	S. Loomis	Chicago Bungalow	Porshed	Lund	Lindstrom	23x40x20	3000	12/17/15	
C	9357	S. Loomis	Chicago Bungalow	M. Cusack	Ap Stoff	Schleyer	24x34x27	10000	3/31/25	
C	9357	S. Loomis	Garage	x	x	x	x	x	c. 1925	
C	1408-10	W. 94 th (end of Loomis)	Multi-Unit	x	x	x	x	x	c. 1929	
C	9403	S. Loomis	Chicago Bungalow	Mortinsen	JE Bacon	J Braehl	24x50x18	6000	4/12/20	
C	9405	S. Loomis	Chicago Bungalow	Mortinsen	JE Bacon	J Braehl	24x50x18	6000	4/12/20	
C	9409	S. Loomis	Chicago Bungalow	x	x	x	x	x		
C	9415	S. Loomis	Chicago Bungalow	Lenon	Lund	Brandstum	26x46x18	3000	7/2/17	
NC	9419	S. Loomis	Ranch	x	x	x	x	x	c. 1962	Out of P.O.S.
NC	9421	S. Loomis	Ranch	x	x	x	x	x	c. 1963	Out of P.O.S.
NC	9425	S. Loomis	Chicago Bungalow	Wightman		Bloomberg	25x60x20	6500	7/30/27	2 nd Story Addition
C	9429	S. Loomis	Chicago Bungalow	x	x	x	x	x	c. 1921	
NC	9433	S. Loomis	Ranch	x	x	x	x	x	c. 1952	Out of P.O.S.
C	9435	S. Loomis	Chicago Bungalow	Mortinsen	JE Bacon	J Braehl	24x58x18	6500	4/21/20	
C	9439	S. Loomis	Chicago Bungalow	Mortinsen	JE Bacon	J Braehl	25x58x18	6500	4/21/20	
NC	9445	S. Loomis	Ranch	x	x	x	x	x	c. 1959	Out of P.O.S.
S. ADA STREET										
C	9000	S. Ada	Multi-Unit	x	x	x	x	x	c. 1928	
C	9004	S. Ada	Chicago Bungalow	VanDam	x	Radke	24x45x18	5000	6/30/24	
C	9008	S. Ada	Chicago Bungalow	VanDam	x	Radke	24x45x18	5000	6/30/24	

Brainerd Bungalow District

Cook County, Illinois

Name of Property

County and State

C	9012	S. Ada	Chicago Bungalow	x	x	x	x	x	c. 1924	
C	9014	S. Ada	Chicago Bungalow	McCarthy	Allison	Chopp	24x50x20	5000	4/12/25	
C	9018	S. Ada	Chicago Bungalow	McCarthy	Allison	Chopp	24x50x20	5000	4/12/25	
NC	9020	S. Ada	Chicago Bungalow	Henry Eden	Hoake	CA Krammer	24x62x20	5000	8/4/24	Attic Expansion
NC	9024	S. Ada	Chicago Bungalow	x	x	x	x	x	c. 1924	2 nd Story Addition
C	9028	S. Ada	Chicago Bungalow	Wightman		Bloomberg	24x58x18	5500	3/30/27	
NC	9030	S. Ada	Chicago Bungalow	VanDam	Braucher	Gjaltema	24x50x10	7000	11/3/25	2 nd Story Addition
C	9034	S. Ada	Chicago Bungalow	VanDam	Braucher	Gjaltema	24x50x10	7000	11/3/25	
C	9038	S. Ada	Chicago Bungalow	Wightman		Bloomberg	24x58x18	5500	3/30/27	
C	9040	S. Ada	Chicago Bungalow	Wightman		Bloomberg	24x58x18	5500	3/30/27	
C	9042	S. Ada	Chicago Bungalow	Wightman		Bloomberg	24x58x18	5500	3/30/27	
NC	9046	S. Ada	Chicago Bungalow	Wightman		Bloomberg	24x58x18	5500	3/30/27	Dormer Addition
NC	9050	S. Ada	Brick Two-Flat	x	x	x	x	x	c. 1960	Out of P.O.S.
C	9056	S. Ada	Multi-Unit	E. Fribel	Newhouse	Beemsterboen	x	x	2/20/27	
C	9001-5	S. Ada	Multi-Unit	J. Zach	J. Hoche	Englehart Construction Co.	61x111x28	25,000	10/24/28	9054-9058 on Zoning Map
C	9001-5	S. Ada	Garage	x	x	x	x	x	5/28/28	
C	9007	S. Ada	Chicago Bungalow	Wightman	x	Bloomberg	24x50x18	6000	4/7/27	
C	9007	S. Ada	Garage	x	x	x	x	x	c. 1927	
C	9011	S. Ada	Chicago Bungalow	VanDam	x	Gjaltema	22x47x18	7000	8/4/26	
C	9013	S. Ada	Chicago Bungalow	VanDam	x	Gjaltema	22x47x18	7000	8/4/26	
C	9017	S. Ada	Chicago Bungalow	VanDam	x	Gjaltema	22x47x18	7000	8/4/26	
C	9021	S. Ada	Chicago Bungalow	x	x	x	x	x		
C	9023	S. Ada	Brick Two-Story	VanDam	x	x	x	x	c. 1925	
C	9027	S. Ada	Chicago Bungalow	VanDam	x	x	x	x	x	
C	9031	S. Ada	Chicago Bungalow	Jake & Harry VanDam	x	J. Gjaltema	22x47x18	7000	8/4/26	
C	9035	S. Ada	Chicago Bungalow	Jake & Harry VanDam	x	J. Gjaltema	22x47x18	7000	8/4/26	
C	9037	S. Ada	Chicago Bungalow	J&H VanDam	Lauty & Christenson	J. Gjaltema	25x50x20	7000	9/22/26	
C	9041	S. Ada	Chicago Bungalow	J&H VanDam	Lauty & Christenson	J. Gjaltema	25x50x20	7000	9/22/26	
C	9043	S. Ada	Chicago Bungalow	J&H VanDam	Lauty & Christenson	J. Gjaltema	25x50x20	7000	9/22/26	

Brainerd Bungalow District
 Name of Property

Cook County, Illinois
 County and State

C	9051	S. Ada	Multi-Unit	C.A. Kramer	Sammons	Owner	31x89x28	25,000	9/24/30	
C	9200	S. Ada	Multi-Unit	x	x	x	x	x	c. 1927	
NC	9201	S. Ada	Brick Two-Flat	x	x	x	x	x	c. 1958	Out of P.O.S.
N/A	9204	S. Ada	Vacant Lot	x	x	x	x	x	N/A	Vacant Lot
NC	9205	S. Ada	Brick Two-Flat	x	x	x	x	x	c. 1958	Out of P.O.S.
C	9207-9	S. Ada	Multi-Unit	EJ Nieuburnt	Nicholson	V Schaflein	40x57x26x20x36	16000	5/13/31	
C	9210	S. Ada	Brick Two-Flat	Anderson	BA Strieff	x	24x60x27	12000	10/24/28	
C	9210	S. Ada	Garage	x	x	x	x	x	8/23/28	
C	9212	S. Ada	Chicago Bungalow	Berenders	AP Strafe	J Vacci	25x55x20	1000	9/14/28	
C	9213	S. Ada	Chicago Bungalow	Jane	Allison	McCabe	24x54x18	6000	11/6/30	
C	9215	S. Ada	Chicago Bungalow	Berenders	AP Strafe	J Vacci	25x55x20	1000	9/14/28	
NC	9216	S. Ada	Brick Two-Flat	x	x	x	x	x	c. 1963	Out of P.O.S.
NC	9219	S. Ada	Ranch	x	x	x	x	x	c. 1951	Out of P.O.S.
C	9220	S. Ada	Chicago Bungalow	Berenders	AP Strafe	J Vacci	25x55x20	1000	9/14/28	
C	9223	S. Ada	Multi-Unit	Kloosterman	Lund	V Schaflein	24x56x28	12000	11/3/27	
C	9225	S. Ada	Brick Two-Flat	Kloosterman	Allison	V Schaflein	24x63x30	15000	11/3/27	
C	9226	S. Ada	Chicago Bungalow	W. J. Wightman	x	Blommaert	23x58x18	6000	7/6/27	
C	9228	S. Ada	Chicago Bungalow	W. J. Wightman	x	Blommaert	23x58x18	6000	7/6/27	
C	9229	S. Ada	Chicago Bungalow	Wm. J. Wightman	McClellan	Blommaert	25x58x20	6000	7/6/27	
C	9232	S. Ada	Chicago Bungalow	W. J. Wightman	x	Blommaert	23x58x18	6000	7/6/27	
C	9233	S. Ada	Chicago Bungalow	Wm. J. Wightman	McClellan	Blommaert	25x58x20	6000	7/6/27	
C	9234	S. Ada	Chicago Bungalow	W. J. Wightman	x	Blommaert	23x58x18	6000	7/6/27	
C	9235	S. Ada	Chicago Bungalow	Wm. J. Wightman	McClellan	Blommaert	25x58x20	6000	7/6/27	
C	9238	S. Ada	Chicago Bungalow	W. J. Wightman	x	Blommaert	23x58x18	6000	7/6/27	
C	9239	S. Ada	Chicago Bungalow	Wm. J. Wightman	McClellan	Blommaert	25x58x20	6000	7/6/27	
C	9240	S. Ada	Chicago Bungalow	W. J. Wightman	x	Blommaert	23x58x18	6000	7/6/27	
C	9241	S. Ada	Chicago Bungalow	Wm. J. Wightman	McClellan	Blommaert	25x58x20	6000	7/6/27	
C	9242	S. Ada	Chicago Bungalow	W. J. Wightman	x	Blommaert	23x58x18	6000	9/6/27	
C	9245	S. Ada	Chicago Bungalow	Wm. J. Wightman	McClellan	Blommaert	25x58x20	6000	7/6/27	
C	9246	S. Ada	Chicago Bungalow	x	x	x	x	x	x	
C	9247	S. Ada	Chicago Bungalow	Wm. J. Wightman	McClellan	Blommaert	25x58x20	6000	7/6/27	
C	9250	S. Ada	Chicago Bungalow	W. J. Wightman	x	Blommaert	23x58x18	6000	7/6/27	

Brainerd Bungalow District
Name of Property

Cook County, Illinois
County and State

C	9250	S. Ada	Garage	x	x	x	x	x	c. 1927	
C	9251	S. Ada	Chicago Bungalow	Wm. J. Wightman	McClellan	Blommaert	25x58x20	6000	7/6/27	
C	9252	S. Ada	Chicago Bungalow	W. J. Wightman	x	Blommaert	23x58x18	6000	7/6/27	
C	9252	S. Ada	Garage	x	x	x	x	x	7/28/30	
C	9253	S. Ada	Chicago Bungalow	Wm. J. Wightman	McClellan	Blommaert	25x58x20	6000	7/6/27	
C	9256	S. Ada	Chicago Bungalow	W. J. Wightman	x	Blommaert	25x58x18	8000	7/6/27	
C	9256	S. Ada	Garage	x	x	x	x	x	c. 1927	
C	9257	S. Ada	Chicago Bungalow	W. J. Wightman	McClellan	Blommaert	25x58x20	8000	7/6/27	
C	9300	S. Ada	Chicago Bungalow	x	x	x	x	x	c. 1928	
C	9304	S. Ada	Chicago Bungalow	Bertman and Sons	Redderson	V Schaflin	26x62x20	5500	1/7/27	
NC	9310	S. Ada	Chicago Bungalow	x	x	x	x	x	c. 1928	Dormer Addition
C	9312	S. Ada	Chicago Bungalow	M. Markston	x	Owner	24x60x18	9000	2/20/28	
C	9314	S. Ada	Chicago Bungalow	VanDam	x	Grahmer	25x56x18	7500	12/2/26	
NC	9318	S. Ada	Chicago Bungalow	Bertman and Sons	Redderson	V Schaflin	26x62x20	5500	1/7/27	Attic Expansion
C	9322	S. Ada	Chicago Bungalow	Nenbrauer	Hocker	Owner	23x52x20	7500	10/20/26	
C	9326	S. Ada	Chicago Bungalow	Bertman and Sons	Redderson	V Schaflin	26x62x20	5500	1/7/27	
C	9328	S. Ada	Chicago Bungalow	Wm. J. Wightman	E. G. McClellan	Blommerst	23x58x20	7000	6/23/27	
C	9332	S. Ada	Chicago Bungalow	Wm. J. Wightman	E. G. McClellan	Blommerst	23x58x20	7000	6/23/27	
C	9332	S. Ada	Garage	x	x	x	x	x	c. 1927	
C	9334	S. Ada	Chicago Bungalow	Wm. J. Wightman	E. G. McClellan	Blommerst	23x58x20	7000	6/23/27	
C	9334	S. Ada	Garage	x	x	x	x	x	c. 1927	
C	9338	S. Ada	Chicago Bungalow	Wm. J. Wightman	E. G. McClellan	Blommerst	23x58x20	7000	6/23/27	
C	9338	S. Ada	Garage	x	x	x	x	x	c. 1927	
C	9342	S. Ada	Chicago Bungalow	Wm. J. Wightman	E. G. McClellan	Blommerst	23x58x20	7000	6/23/27	
C	9342	S. Ada	Garage	x	x	x	x	x	c. 1927	
C	9344	S. Ada	Chicago Bungalow	Wm. J. Wightman	E. G. McClellan	Blommerst	23x58x20	7000	6/23/27	
C	9344	S. Ada	Garage	x	x	x	x	x	c. 1927	
C	9348	S. Ada	Chicago Bungalow	Wm. J. Wightman	E. G. McClellan	Blommerst	23x58x20	7000	6/23/27	
C	9348	S. Ada	Garage	x	x	x	x	x	c. 1927	
C	9350	S. Ada	Chicago Bungalow	Wm. J. Wightman	E. G. McClellan	Blommerst	23x58x20	7000	6/23/27	
C	9354	S. Ada	Chicago Bungalow	Wightman	x	Blommaert	23x58x18	6500	7/6/27	
NC	9358	S. Ada	Chicago Bungalow	Wightman	x	Blommaert	25x58x18	8000	7/6/27	Dormer Addition
NC	9400	S. Ada	Brick Two-Story	x	x	x	x	x	c. 1942	

Brainerd Bungalow District
Name of Property

Cook County, Illinois
County and State

C	9401	S. Ada	Chicago Bungalow	Wm. J. Wightman	McClellan	C.A. Blommaert	24x58x20	7000	4/22/27	
C	9404	S. Ada	Chicago Bungalow	Wightman	McClellan	C.A. Blommaert	24x58x20	7000	4/22/27	
C	9405	S. Ada	Chicago Bungalow	Wm. J. Wightman	McClellan	C.A. Blommaert	24x58x20	7000	4/22/27	
C	9406	S. Ada	Chicago Bungalow	Wm J. Wightman	McClellan	C. A. Blommerst	24x58x20	7000	4/22/27	
C	9408	S. Ada	Chicago Bungalow	Wm J. Wightman	McClellan	C. A. Blommerst	24x58x20	7000	4/22/27	
C	9409	S. Ada	Chicago Bungalow	Wm. J. Wightman	McClellan	C.A. Blommaert	24x58x20	7000	4/22/27	
C	9411	S. Ada	Chicago Bungalow	Wm. J. Wightman	McClellan	C.A. Blommaert	24x58x20	7000	4/22/27	
C	9412	S. Ada	Chicago Bungalow	Wm J. Wightman	McClellan	C. A. Blommerst	24x58x20	7000	4/22/27	
C	9413	S. Ada	Chicago Bungalow	Wm. J. Wightman	McClellan	C.A. Blommaert	24x58x20	7000	4/22/27	
C	9414	S. Ada	Chicago Bungalow	Wm J. Wightman	McClellan	C. A. Blommerst	24x58x20	7000	4/22/27	
C	9417	S. Ada	Chicago Bungalow	Wm. J. Wightman	McClellan	C.A. Blommaert	24x58x20	7000	4/22/27	
C	9418	S. Ada	Chicago Bungalow	Wm J. Wightman	McClellan	C. A. Blommerst	24x58x20	7000	4/22/27	
C	9420	S. Ada	Chicago Bungalow	Wm J. Wightman	McClellan	C. A. Blommerst	24x58x20	7000	4/22/27	
C	9420	S. Ada	Garage	x	x	x	x	x	c. 1927	
C	9421	S. Ada	Chicago Bungalow	Wm. J. Wightman	McClellan	C.A. Blommaert	24x58x20	7000	4/22/27	
C	9423	S. Ada	Chicago Bungalow	Wm. J. Wightman	McClellan	C.A. Blommaert	24x58x20	7000	4/22/27	
C	9424	S. Ada	Chicago Bungalow	Wm J. Wightman	McClellan	C. A. Blommerst	24x58x20	7000	4/22/27	
C	9425	S. Ada	Chicago Bungalow	Wm. J. Wightman	McClellan	C.A. Blommaert	24x58x20	7000	4/22/27	
C	9426	S. Ada	Chicago Bungalow	Wm J. Wightman	McClellan	C. A. Blommerst	24x58x20	7000	4/22/27	
C	9429	S. Ada	Chicago Bungalow	Wm. J. Wightman	McClellan	C.A. Blommaert	24x58x20	7000	4/22/27	
C	9430	S. Ada	Chicago Bungalow	Wm J. Wightman	McClellan	C. A. Blommerst	24x58x20	7000	4/22/27	
C	9431	S. Ada	Chicago Bungalow	Wm. J. Wightman	McClellan	C.A. Blommaert	24x58x20	7000	4/22/27	
C	9431	S. Ada	Garage	x	x	x	x	x	c. 1927	
C	9432	S. Ada	Chicago Bungalow	Wm J. Wightman	McClellan	C. A. Blommerst	24x58x20	7000	4/22/27	
C	9435	S. Ada	Garage	x	x	x	x	x	c. 1927	
C	9435	S. Ada	Chicago Bungalow	Wm. J. Wightman	McClellan	C.A. Blommaert	24x58x20	7000	4/22/27	
NC	9436	S. Ada	Ranch	x	x	x	x	x	c. 1949	Out of P.O.S.
C	9437	S. Ada	Chicago Bungalow	Wm. J. Wightman	McClellan	C.A. Blommaert	24x58x20	7000	4/22/27	
C	9437	S. Ada	Garage	x	x	x	x	x	c. 1927	
C	9441	S. Ada	Chicago Bungalow	x	x	x	x	x	c. 1927	
C	9441	S. Ada	Garage	x	x	x	x	x	c. 1927	
C	9442-4	S. Ada	Multi-Unit	Ahern	Stelt	G Schalterm	45x60x28	20000	9/26/27	

Brainerd Bungalow District
Name of Property

Cook County, Illinois
County and State

C	9442-4	S. Ada	Garage	x	x	x	x	x	c. 1927	
C	9443	S. Ada	Chicago Bungalow	Wm. J. Wightman	McClellan	C.A. Blommaert	24x58x20	7000	4/22/27	
S. THROOP STREET										
NC	8910	S. Throop	Chicago Bungalow	A. O. Drews	Braucher	Owner	24x58x20	5000	12/10/26	Dormer Addition
C	8914	S. Throop	Chicago Bungalow	Healy	Johnk	Gutrich	23x37x20	5000	3/24/26	
C	8914	S. Throop	Garage	x	x	x	x	x	c. 1926	
C	8916	S. Throop	Chicago Bungalow	A. O. Drews	Braucher	Val Dehafflin	24x53x20	6500	9/26/27	
C	8920	S. Throop	Chicago Bungalow	Healy	Johnk	Gutrich	23x37x20	5000	3/24/26	
C	8924	S. Throop	Chicago Bungalow	Healy	Johnk	Gutrich	23x37x20	5000	3/24/26	
C	8928	S. Throop	Chicago Bungalow	Healy	Johnk	Gutrich	23x37x20	5000	3/24/26	
C	8930	S. Throop	Chicago Bungalow	Healy	Johnk	Gutrich	23x37x20	5000	3/24/26	
C	8934	S. Throop	Chicago Bungalow	Healy	Johnk	Gutrich	23x37x20	5000	3/24/26	
C	8936	S. Throop	Chicago Bungalow	Healy	Johnk	Gutrich	23x37x20	5000	3/24/26	
N/A	8942	S. Throop	Vacant Lot	x	x	x	x	x	N/A	Vacant Lot
C	8944	S. Throop	Chicago Bungalow	A. Tulander	x	S. Monson	24x58x18	7000	5/13/27	
C	8948	S. Throop	Chicago Bungalow	A. Tulander	x	S. Monson	24x58x18	7000	5/13/27	
C	8950	S. Throop	Chicago Bungalow	Healy	Johnk	Gutrich	23x37x20	5000	3/24/26	
C	8954	S. Throop	Multi-Unit	x	x	x	x	x	c. 1930	
NC	8908	S. Throop	Park / Open Land	x	x	x	x	x	3/24/26	Outside of P.O.S.
C	8915	S. Throop	Chicago Bungalow	Healy	Johnk	Gutrich	23x37x20	5000	3/24/26	
C	8921	S. Throop	Chicago Bungalow	Healy	Johnk	Gutrich	23x37x20	5000	3/24/26	
C	8923	S. Throop	Chicago Bungalow	Healy	Johnk	Gutrich	23x37x20	5000	3/24/26	
C	8925	S. Throop	Chicago Bungalow	Healy	Johnk	Gutrich	23x37x20	5000	3/24/26	
C	8929	S. Throop	Chicago Bungalow	Healy	Johnk	Gutrich	23x37x20	5000	3/24/26	
C	8931	S. Throop	Chicago Bungalow	Healy	Johnk	Gutrich	23x37x20	5000	3/24/26	
C	8935	S. Throop	Chicago Bungalow	Healy	Johnk	Gutrich	23x37x20	5000	3/24/26	
C	8939	S. Throop	Chicago Bungalow	Healy	Johnk	Gutrich	23x37x20	5000	3/24/26	
C	8941	S. Throop	Chicago Bungalow	Healy	Johnk	Gutrich	23x37x20	5000	3/24/26	
NC	8945	S. Throop	Chicago Bungalow	x	x	x	x	x	c. 1926	Attic Expansion
C	8949	S. Throop	Chicago Bungalow	Wright	Burgman	Burgman	23x58x18	6750	5/12/27	
C	8951	S. Throop	Chicago Bungalow	x	x	x	x	x	c. 1922	

Brainerd Bungalow District
Name of Property

Cook County, Illinois
County and State

C	8959	S. Throop	Multi-Unit	x	x	x	x	x	c. 1927	
C	9000	S. Throop	Multi-Unit	D.J. McGarry	Sammons	J.B. Aanodt & Sons	54x111x27	29000	4/22/29	
C	9006	S. Throop	Chicago Bungalow	Kramer	Braucher	Owner	21x50x20	5000	7/27/26	
C	9010	S. Throop	Chicago Bungalow	Kramer	Braucher	Owner	21x50x20	5000	7/27/26	
C	9012	S. Throop	Chicago Bungalow	Kramer	Braucher	Owner	21x50x20	5000	7/27/26	
C	9016	S. Throop	Chicago Bungalow	Kramer	Braucher	Owner	21x50x20	5000	7/27/26	
C	9020	S. Throop	Chicago Bungalow	Kramer	Braucher	Owner	21x50x20	5000	7/27/26	
C	9024	S. Throop	Chicago Bungalow	Kramer	Braucher	Owner	21x50x20	5000	7/27/26	
C	9026	S. Throop	Chicago Bungalow	Kramer	Braucher	Owner	21x50x20	5500	9/19/27	
C	9028	S. Throop	Chicago Bungalow	x	x	x	x	x	c. 1926	
C	9032	S. Throop	Chicago Bungalow	Kramer	Braucher	Owner	21x50x20	5000	7/27/26	
C	9034	S. Throop	Chicago Bungalow	Kramer	Braucher	Owner	21x50x20	5000	7/27/26	
C	9038	S. Throop	Chicago Bungalow	Kramer	Braucher	Owner	21x50x20	5000	7/27/26	
C	9040	S. Throop	Chicago Bungalow	Kramer	Braucher	Owner	21x50x20	5000	7/27/26	
C	9044	S. Throop	Chicago Bungalow	Kramer	Braucher	Owner	21x50x20	5000	7/27/26	
C	9025	S. Throop	Fort Dearborn Elementary School Building	Board of Education	J.C. Christianse n	H. A. Hanson Const.	155x242x46	500,000	2/17/28	
NC	9200	S. Throop	Single family	x	x	x	x	x	c. 1950	Out of P.O.S.
NC	9201	S. Throop	Ranch	x	x	x	x	x	c. 1948	Out of P.O.S.
NC	9203	S. Throop	Cape Cod	x	x	x	x	x	c. 1941	Out of P.O.S.
C	9206	S. Throop	Chicago Bungalow	Collins	x	Kramer	24x50x17	5600	4/7/24	
C	9206	S. Throop	Garage	x	x	x	x	x	c. 1924	
C	9207	S. Throop	Chicago Bungalow	Axel Sivaissou	G. McClenna n	Val Schafflin	23x58x20	6500	11/18/27	
C	9208	S. Throop	Chicago Bungalow	Collins	x	Kramer	24x50x17	5600	4/7/24	
C	9211	S. Throop	Chicago Bungalow	Kramer	Kramer	x	24x57x18	5500	4/19/27	
C	9211	S. Throop	Garage	x	x	x	x	x	c. 1927	
C	9212	S. Throop	Chicago Bungalow	x	x	x	x	x	c. 1924	
C	9215	S. Throop	Chicago Bungalow	Williams Bros	Koster	Williams Bros	24x28x15	4000	1/4/24	
C	9216	S. Throop	Chicago Bungalow	J. Collins	Allison	Kramer	24x44x20	5000	6/2/15	
C	9217	S. Throop	Chicago Bungalow	Kramer	Kramer	CA Kramer	24x57x18	5500	4/22/29	
C	9218	S. Throop	Chicago Bungalow	J. Collins	Allison	Kramer	24x44x20	5000	6/2/15	

Brainerd Bungalow District

Cook County, Illinois

Name of Property

County and State

C	9219	S. Throop	Chicago Bungalow	Schelling r	Sammons	Tryner Bros.	25x62x20	4500	1/8/27	
C	9220	S. Throop	Chicago Bungalow	J. Collins	Allison	Kramer	24x44x20	5000	6/2/15	
C	9223	S. Throop	Chicago Bungalow	Kramer	Kramer	x	24x57x18	5500	4/19/27	
C	9226	S. Throop	Chicago Bungalow	Collins	x	Johnson	24x60x18	8000	9/30/26	
C	9229	S. Throop	Chicago Bungalow	John D. G. Kramer	x	CA Kramer	24x50x18	5500	9/26/27	
C	9230	S. Throop	Chicago Bungalow	Collins	x	Johnson	24x60x18	8000	9/30/26	
C	9231	S. Throop	Chicago Bungalow	J. Muth	x	Edw. Chopp	21x45xblank	5000	6/30/27	
C	9232	S. Throop	Chicago Bungalow	E. Hardin	McClellan	A. Federeci	23x59x18	6000	1/2/29	
N/A	9233	S. Throop	Vacant Lot	x	x	x	x	x	N/A	Vacant Lot
C	9236	S. Throop	Chicago Bungalow	J Anders	Christensen	Gjaltema	23x63x20	5000	6/20/28	
C	9237	S. Throop	Chicago Bungalow	J Anders	Christensen	Gjaltema	25x63x20	5000	6/20/28	
C	9238	S. Throop	Chicago Bungalow	Collins	x	Kramer	25x47x10	5700	1/4/24	
C	9238	S. Throop	Garage	x	x	x	x	x	9/23/23	
C	9241	S. Throop	Chicago Bungalow	J. Giles	Lautz & Christensen	Owner	25x52x20	6000	1/8/27	
NC	9242	S. Throop	Chicago Bungalow	J. Giles	Christensen	Owner	25x52x20	6000	1/8/27	Attic Expansion
C	9245	S. Throop	Chicago Bungalow	J. Giles	Lautz & Christensen	Owner	25x52x20	6000	1/8/27	
C	9246	S. Throop	Chicago Bungalow	Collins	x	Kramer	24x47x16	5000	6/5/23	
C	9248	S. Throop	Chicago Bungalow	Collins	x	Kramer	24x47x16	5000	6/5/23	
C	9249	S. Throop	Chicago Bungalow	Dahlberg	Sammons	Rundberg	23x67x20	7000	5/13/27	
C	9251	S. Throop	Chicago Bungalow	Dahlberg	Sammons	Rundberg	23x67x20	7000	5/13/27	
C	9252	S. Throop	Chicago Bungalow	x	x	x	x	x	c. 1924	
C	9255	S. Throop	Chicago Bungalow	Kramer	Kramer	x	24x57x18	5500	4/19/27	
C	9256	S. Throop	Chicago Bungalow	K. O. Karlson	x	Axel Berglund	33x62x18	9000	2/25/27	
NC	9257	S. Throop	Cape Cod	x	x	x	x	x	c. 1940	Out of P.O.S.
C	9300	S. Throop	Chicago Bungalow	J. Batric	Lund	W. Petersen	32x51x20	6000	7/17/24	
C	9301	S. Throop	Chicago Bungalow	Wightman	McClellan	Blommerst	25x58x29	7500	9/26/27	
C	9310	S. Throop	Garage	x	x	x	x	x	c. 1927	
C	9305	S. Throop	Chicago Bungalow	Wightman	McClellan	Blommerst	23x58x20	6500	12/21/27	
C	9306	S. Throop	Chicago Bungalow	Batch	x	W. Peterson	35x43x20	12000	11/6/26	
C	9307	S. Throop	Chicago Bungalow	Wightman	McClellan	Blommerst	23x58x20	6500	12/21/27	
C	9310	S. Throop	Chicago Bungalow	McClellan	x	McClellan	23x58x20	6550	12/21/27	

Brainerd Bungalow District
Name of Property

Cook County, Illinois
County and State

C	9311	S. Throop	Chicago Bungalow	Wightman	McClellan	Blommerst	23x58x20	6500	12/21/27	
C	9315	S. Throop	Brick Two-Flat	E. Zich	Les. Rose	Blommerst	24x52x30	10500	9/26/27	
NC	9316	S. Throop	Chicago Bungalow	x	x	x	x	x	c. 1927	Attic Expansion
C	9319	S. Throop	Chicago Bungalow	Wightman	x	Blommerst	23x58x18	7000	1/14/27	
C	9320	S. Throop	Chicago Bungalow	Wightman	McClellan	Bloomberg	23x58x20	7000	1/14/27	
C	9321	S. Throop	Chicago Bungalow	Wightman	x	Blommerst	23x58x18	7000	1/14/27	
C	9322	S. Throop	Chicago Bungalow	Wightman	McClellan	Bloomberg	23x58x20	7000	1/14/27	
C	9325	S. Throop	Chicago Bungalow	Wightman	x	Blommerst	23x58x18	7000	1/14/27	
C	9326	S. Throop	Chicago Bungalow	JB Threll and Co	x	RA Bennett	23x50x18	6000	6/2/25	
C	9327	S. Throop	Chicago Bungalow	Wightman	x	Blommerst	23x58x18	7000	1/14/27	
C	9327	S. Throop	Garage	x	x	x	x	x	c. 1927	
C	9331	S. Throop	Chicago Bungalow	Wightman	x	Blommerst	23x58x18	7000	1/14/27	
C	9332	S. Throop	Chicago Bungalow	J. Van Damm	Sammons	J. Gjoltema	25x63x20	5000	8/2/28	
C	9333	S. Throop	Chicago Bungalow	Wightman	x	Blommerst	23x58x18	7000	1/14/27	
C	9334	S. Throop	Chicago Bungalow	J. Van Damm	Sammons	J. Gjoltema	25x63x20	5000	8/2/28	
C	9337	S. Throop	Chicago Bungalow	Wightman	x	Blommerst	23x58x18	7000	1/14/27	
C	9338	S. Throop	Chicago Bungalow	J. Van Damm	Sammons	J. Gjoltema	25x63x20	5000	8/2/28	
C	9339	S. Throop	Chicago Bungalow	Wightman	x	Blommerst	23x58x18	7000	1/14/27	
NC	9340	S. Throop	Four Square	x	x	x	x	x	c. 1914	Out of P.O.S.
C	9343	S. Throop	Chicago Bungalow	Wightman	x	Blommerst	23x58x18	7000	1/14/27	
C	9345	S. Throop	Chicago Bungalow	Wightman	x	Blommerst	23x58x18	7000	1/14/27	
NC	9346	S. Throop	Cape Cod	x	x	x	x	x	c. 1940	Out of P.O.S.
C	9349	S. Throop	Chicago Bungalow	Wightman	x	Blommerst	23x58x18	7000	1/14/27	
C	9350	S. Throop	Chicago Bungalow	Wightman	McClellan	Bloomberg	23x58x20	7000	9/26/27	
C	9350	S. Throop	Garage	x	x	x	x	x	c. 1927	
NC	9351	S. Throop	Chicago Bungalow	Wightman	x	Blommerst	23x58x18	7000	1/14/27	2 nd Story Addition
C	9355	S. Throop	Chicago Bungalow	Wightman	x	Blommerst	23x58x18	7000	1/14/27	
NC	9357	S. Throop	Chicago Bungalow	Wightman	x	Blommerst	23x58x18	7000	9/26/27	Dormer Addition
C	9358	S. Throop	Chicago Bungalow	Wightman	McClellan	Bloomberg	23x58x20	7000	1/14/27	
C	9358	S. Throop	Garage	x	x	x	x	x	c. 1927	
C	9400	S. Throop	Chicago Bungalow	Wightman	x	Blommerst	23x58x18	7000	10/8/26	

Brainerd Bungalow District
Name of Property

Cook County, Illinois
County and State

C	9400	S. Throop	Garage	x	x	x	x	x	c. 1926	
C	9401	S. Throop	Chicago Bungalow	Wightman	x	Blommerst	23x58x18	7000	10/8/26	
C	9401	S. Throop	Garage	x	x	x	x	x	c. 1926	
C	9404	S. Throop	Chicago Bungalow	Wightman	McClellan	Blommerst	23x58x18	7000	10/8/20	
C	9405	S. Throop	Chicago Bungalow	Wightman	x	Blommerst	23x58x18	7000	10/8/26	
C	9407	S. Throop	Chicago Bungalow	Wightman	x	Blommerst	23x58x18	7000	10/8/26	
C	9408	S. Throop	Chicago Bungalow	Wightman	McClellan	Blommerst	23x58x18	7000	10/8/20	
NC	9410	S. Throop	Chicago Bungalow	Wightman	McClellan	Blommerst	23x58x18	7000	10/8/20	Attic Expansion
C	9411	S. Throop	Chicago Bungalow	Wightman	x	Blommerst	23x58x18	7000	10/8/26	
NC	9413	S. Throop	Chicago Bungalow	Wightman	x	Blommerst	23x58x18	7000	10/8/26	2 nd Story Addition
NC	9414	S. Throop	Chicago Bungalow	Wightman	McClellan	Blommerst	23x58x18	7000	10/8/20	2 nd Story Addition
C	9417	S. Throop	Chicago Bungalow	Wightman	x	Blommerst	23x58x18	7000	10/8/26	
C	9418	S. Throop	Chicago Bungalow	Wightman	McClellan	Blommerst	23x58x18	7000	10/8/20	
C	9419	S. Throop	Chicago Bungalow	Wightman	x	Blommerst	23x58x18	7000	10/8/26	
C	9420	S. Throop	Chicago Bungalow	Wightman	McClellan	Blommerst	23x58x18	7000	10/8/20	
C	9423	S. Throop	Chicago Bungalow	Wightman	x	Blommerst	23x58x18	7000	10/8/26	
C	9424	S. Throop	Chicago Bungalow	Wightman	McClellan	Blommerst	23x58x18	7000	10/8/20	
NC	9425	S. Throop	Chicago Bungalow	Wightman	x	Blommerst	23x58x18	7000	10/8/26	2 nd Story Addition
C	9426	S. Throop	Chicago Bungalow	Wightman	McClellan	Blommerst	23x58x18	7000	10/8/20	
C	9429	S. Throop	Chicago Bungalow	Wightman	x	Blommerst	23x58x18	7000	10/8/26	
C	9430	S. Throop	Chicago Bungalow	Wightman	McClellan	Blommerst	23x58x18	7000	10/8/20	
C	9431	S. Throop	Chicago Bungalow	Wightman	x	Blommerst	23x58x18	7000	10/8/26	
C	9432	S. Throop	Chicago Bungalow	Wightman	McClellan	Blommerst	23x58x18	7000	10/8/20	
NC	9435	S. Throop	Chicago Bungalow	Wightman	x	Blommerst	23x58x18	7000	10/8/26	Dormer Addition
C	9436	S. Throop	Chicago Bungalow	Wightman	McClellan	Blommerst	23x58x18	7000	10/8/20	
C	9437	S. Throop	Chicago Bungalow	Wightman	x	Blommerst	23x58x18	7000	10/8/26	
C	9438	S. Throop	Chicago Bungalow	Wightman	McClellan	Blommerst	23x58x18	7000	10/8/20	
C	9441	S. Throop	Chicago Bungalow	Wightman	x	Blommerst	23x58x18	7000	10/8/26	
C	9441	S. Throop	Garage	x	x	x	x	x	c. 1926	
NC	9442	S. Throop	Ranch	x	x	x	x	x	c. 1955	Out of P.O.S.
C	9443	S. Throop	Chicago Bungalow	Wightman	x	Blommerst	23x58x18	7000	10/8/26	

Brainerd Bungalow District
 Name of Property

Cook County, Illinois
 County and State

S. ELIZABETH STREET										
N/A	8902	S. Elizabeth	Vacant Lot	x	x	x	x	x	N/A	Vacant Lot
N/A	8908	S. Elizabeth	Vacant Lot	x	x	x	x	x	N/A	Vacant Lot
N/A	8911	S. Elizabeth	Vacant Lot	x	x	x	x	x	N/A	Vacant Lot
C	8913	S. Elizabeth	Chicago Bungalow	Healy	Johnson	Petersen	23x37x20	5000	3/26/26	
C	8917	S. Elizabeth	Chicago Bungalow	Healy	Johnson	Petersen	23x37x20	5000	3/26/26	
C	8919	S. Elizabeth	Chicago Bungalow	Healy	Johnson	Petersen	23x37x20	5000	3/26/26	
C	8923	S. Elizabeth	Chicago Bungalow	Healy	Johnson	Petersen	23x37x20	5000	3/26/26	
C	8924	S. Elizabeth	Chicago Bungalow	Healy	Johnson	Petersen	23x37x20	5000	3/26/26	
C	8925	S. Elizabeth	Chicago Bungalow	Healy	Johnson	Petersen	23x37x20	5000	3/26/26	
C	8928	S. Elizabeth	Chicago Bungalow	Healy	Johnson	Petersen	23x37x20	5000	3/26/26	
C	8929	S. Elizabeth	Chicago Bungalow	Healy	Johnson	Petersen	23x37x20	5000	3/26/26	
NC	8930	S. Elizabeth	Chicago Bungalow	Healy	Johnson	Petersen	23x37x20	5000	3/26/26	Dormer Addition
C	8931	S. Elizabeth	Chicago Bungalow	Healy	Johnson	Petersen	23x37x20	5000	3/26/26	
C	8934	S. Elizabeth	Chicago Bungalow	Healy	Johnson	Petersen	23x37x20	5000	3/26/26	
C	8935	S. Elizabeth	Chicago Bungalow	Healy	Johnson	Petersen	23x37x20	5000	3/26/26	
C	8936	S. Elizabeth	Chicago Bungalow	Healy	Johnson	Petersen	23x37x20	5000	3/26/26	
C	8939	S. Elizabeth	Chicago Bungalow	Healy	Johnson	Petersen	23x37x20	5000	3/26/26	
C	8940	S. Elizabeth	Chicago Bungalow	Healy	Johnson	Petersen	23x37x20	5000	3/26/26	
C	8941	S. Elizabeth	Chicago Bungalow	Healy	Johnson	Petersen	23x37x20	5000	3/26/26	
C	8942	S. Elizabeth	Chicago Bungalow	Healy	Johnson	Petersen	23x37x20	5000	3/26/26	
C	8943	S. Elizabeth	Chicago Bungalow	Healy	Johnson	Petersen	23x37x20	5000	3/26/26	
C	8946	S. Elizabeth	Chicago Bungalow	Healy	Johnson	Petersen	23x37x20	5000	3/26/26	
C	8947	S. Elizabeth	Chicago Bungalow	Healy	Johnson	Petersen	23x37x20	5000	3/26/26	
C	8948	S. Elizabeth	Chicago Bungalow	Healy	Johnson	Petersen	23x37x20	5000	3/26/26	
C	8949	S. Elizabeth	Chicago Bungalow	Healy	Johnson	Petersen	23x37x20	5000	3/26/26	
C	8950	S. Elizabeth	Chicago Bungalow	x	x	x	x	x	c.1927	
C	8953	S. Elizabeth	Chicago Bungalow	Healy	Johnson	Petersen	23x37x20	5000	3/26/26	
NC	8955	S. Elizabeth	Ranch	x	x	x	x	x	c. 1952	Out of P.O.S.
C	8956	S. Elizabeth	Multi-Unit	x	x	x	x	x	c. 1930	

Brainerd Bungalow District

Cook County, Illinois

Name of Property

County and State

C	8956	S. Elizabeth	Garage	x	x	x	x	x	c. 1930	
NC	8959	S. Elizabeth	Ranch	x	x	x	x	x	c. 1952	Out of P.O.S.
C	9200	S. Elizabeth	Chicago Bungalow	A. Schade	x	Smers Bros	24x60x18	7900	2/20/27	
C	9204	S. Elizabeth	Chicago Bungalow	A. Schade	x	Smers Bros	24x60x18	7900	2/20/27	
C	9206	S. Elizabeth	Chicago Bungalow	A. Schade	x	Smers Bros	24x60x18	7800	3/11/27	
C	9210	S. Elizabeth	Chicago Bungalow	A. Berender	x	John Vaci	24x48x18	5000	7/8/27	
C	9212	S. Elizabeth	Chicago Bungalow	VanDam	W.E, Sammons	Sjalim	24x51x20	6500	2/20/27	
NC	9214	S. Elizabeth	Brick Two-Story	x	x	x	x	x	c. 1948	Out of P.O.S.
C	9218	S. Elizabeth	Chicago Bungalow	A. Schade	x	Smerz Bros	24x60x18	7000	5/23/27	
C	9222	S. Elizabeth	Chicago Bungalow	A. Schade	x	Smerz Bros	24x60x18	7800	5/23/27	
C	9224	S. Elizabeth	Chicago Bungalow	A. Schade	x	Smerz Bros	24x60x18	7800	5/23/27	
C	9228	S. Elizabeth	Chicago Bungalow	x	x	x	x	x	c. 1927	
NC	9230	S. Elizabeth	Chicago Bungalow	x	x	x	x	x	c. 1927	Dormer Addition
C	9234	S. Elizabeth	Chicago Bungalow	A. Schade	x	Smerz Bros	24x60x18	7000	2/20/27	
C	9236	S. Elizabeth	Chicago Bungalow	A. Schade	x	Smerz Bros	24x60x18	7000	2/20/27	
C	9240	S. Elizabeth	Chicago Bungalow	Shade	Braucher	Smerz Bros	24x60x20	7800	4/2/27	
C	9242	S. Elizabeth	Chicago Bungalow	VanDam	Sommers	Sommers	24x56x18	6500	5/19/27	
C	9246	S. Elizabeth	Chicago Bungalow	VanDam	Sommers	Sommers	24x56x18	6500	5/19/27	
NC	9248	S. Elizabeth	Chicago Bungalow	VanDam	Sommers	Sommers	24x56x18	6500	c.1927	Dormer Addition
C	9250	S. Elizabeth	Chicago Bungalow	VanDam	Sommers	Sommers	24x56x18	6500	5/19/27	
C	9254	S. Elizabeth	Chicago Bungalow	VanDam	Sommers	Sommers	24x56x18	6500	5/19/27	
NC	9258	S. Elizabeth	Chicago Bungalow	VanDam	Sommers	Sommers	24x56x18	6500	5/19/27	2 nd Story Addition
C	9301	S. Elizabeth	Chicago Bungalow	VanDam	Sommers	Sommers	24x56x18	6500	5/19/27	
C	9302	S. Elizabeth	Chicago Bungalow	Wightman	x	Blommerst	23x58x18	7000	4/27/27	
C	9304	S. Elizabeth	Chicago Bungalow	Wightman	x	Blommerst	23x58x18	7000	4/27/27	
C	9305	S. Elizabeth	Chicago Bungalow	S. Korkman	Sammons	J. Diatscher	24x51x20	7000	4/27/27	
C	9306	S. Elizabeth	Chicago Bungalow	Wightman	x	Blommerst	23x58x18	7000	4/27/27	
C	9309	S. Elizabeth	Chicago Bungalow	S. Korkman	Sammons	J. Diatscher	24x51x20	7000	4/27/27	
C	9310	S. Elizabeth	Chicago Bungalow	Wightman	x	Blommerst	23x58x18	7000	4/27/27	
C	9311	S. Elizabeth	Chicago Bungalow	S. Korkman	Sammons	J. Diatscher	24x51x20	7000	4/27/27	
C	9314	S. Elizabeth	Chicago Bungalow	Wightman	x	Blommerst	23x58x18	7000	4/27/27	

Brainerd Bungalow District

Cook County, Illinois

Name of Property

County and State

NC	9315	S. Elizabeth	Chicago Bungalow	Wightman	x	Blommerst	23x58x18	7000	4/27/27	Dormer Addition
C	9317	S. Elizabeth	Chicago Bungalow	Wightman	McClellan	Blommerst	23x58x18	7000	4/25/27	
C	9318	S. Elizabeth	Chicago Bungalow	Wightman	McClellan	Blommerst	23x58x18	7000	4/25/27	
C	9320	S. Elizabeth	Chicago Bungalow	Wightman	McClellan	Blommerst	23x58x18	7000	4/25/27	
C	9321	S. Elizabeth	Chicago Bungalow	J. Cavanaugh	x	Bowen	24x43x18	5000	3/30/26	
C	9323	S. Elizabeth	Chicago Bungalow	J. Cavanaugh	x	Bowen	24x43x18	5000	3/30/26	
C	9324	S. Elizabeth	Chicago Bungalow	J. Cavanaugh	x	Bowen	24x43x18	5000	3/30/26	
C	9326	S. Elizabeth	Chicago Bungalow	J. Cavanaugh	x	Bowen	24x43x18	5000	3/30/26	
C	9327	S. Elizabeth	Chicago Bungalow	J. Cavanaugh	x	Bowen	24x43x18	5000	3/30/26	
C	9329	S. Elizabeth	Chicago Bungalow	J. Cavanaugh	x	Bowen	24x43x18	5000	3/30/26	
C	9330	S. Elizabeth	Chicago Bungalow	J. Cavanaugh	x	Bowen	24x43x18	5000	3/30/26	
NC	9333	S. Elizabeth	Chicago Bungalow	x	x	x	x	x	c. 1927	Dormer Addition
C	9334	S. Elizabeth	Chicago Bungalow	Wightman	x	Obrien and Sons	24x60x20	7600	8/23/27	
NC	9335	S. Elizabeth	Chicago Bungalow	x	x	x	x	x	c. 1927	Dormer Addition
C	9336	S. Elizabeth	Chicago Bungalow	x	x	x	x	x	c. 1927	
C	9339	S. Elizabeth	Chicago Bungalow	Wightman	x	Blommerst	23x58x18	7000	3/9/27	
C	9340	S. Elizabeth	Chicago Bungalow	Wightman	x	Blommerst	23x58x18	7000	3/9/27	
C	9342	S. Elizabeth	Chicago Bungalow	Wightman	x	Blommerst	23x58x18	7000	3/9/27	
C	9343	S. Elizabeth	Chicago Bungalow	Wightman	x	Blommerst	23x58x18	7000	3/9/27	
C	9345	S. Elizabeth	Chicago Bungalow	Wightman	x	Blommerst	23x58x18	7000	3/9/27	
C	9346	S. Elizabeth	Chicago Bungalow	Wightman	x	Blommerst	23x58x18	7000	3/9/27	
C	9347	S. Elizabeth	Chicago Bungalow	Wightman	x	Blommerst	23x58x18	7000	3/9/27	
C	9350	S. Elizabeth	Chicago Bungalow	Wightman	x	Blommerst	23x58x18	7000	3/9/27	
C	9351	S. Elizabeth	Chicago Bungalow	Wightman	x	Blommerst	23x58x18	7000	3/9/27	
C	9352	S. Elizabeth	Chicago Bungalow	Wightman	x	Blommerst	23x58x18	7000	3/9/27	
C	9353	S. Elizabeth	Chicago Bungalow	Wightman	x	Blommerst	23x58x18	7000	3/9/27	
C	9356	S. Elizabeth	Chicago Bungalow	Wightman	x	Blommerst	23x58x18	7000	3/9/27	
C	9357	S. Elizabeth	Chicago Bungalow	Wightman	x	Blommerst	23x58x18	7000	3/9/27	
C	9401	S. Elizabeth	Chicago Bungalow	Wightman	x	Blommerst	23x58x18	7000	3/11/27	
C	9402	S. Elizabeth	Chicago Bungalow	Wightman	x	Blommerst	23x58x18	7000	3/11/27	
C	9402	S. Elizabeth	Garage	x	x	x	x	x	c. 1927	

Brainerd Bungalow District
Name of Property

Cook County, Illinois
County and State

C	9404	S. Elizabeth	Chicago Bungalow	Wightman	x	Blommerst	23x58x18	7000	3/11/27	
NC	9405	S. Elizabeth	Chicago Bungalow	Wightman	x	Blommerst	23x58x18	7000	3/11/27	Attic Expansion
C	9406	S. Elizabeth	Chicago Bungalow	Wightman	x	Blommerst	23x58x18	7000	3/11/27	
C	9406	S. Elizabeth	Garage	x	x	x	x	x	c. 1927	
C	9409	S. Elizabeth	Chicago Bungalow	EJ Kelly	x	Schaflein	24x50x18	7000	1/15/20	
C	9410	S. Elizabeth	Chicago Bungalow	EJ Kelly	x	Schaflein	24x50x18	7000	1/15/20	
C	9410	S. Elizabeth	Garage	x	x	x	x	x	c. 1920	
NC	9412	S. Elizabeth	Chicago Bungalow	Wightman	x	Blommerst	23x58x18	7000	3/11/27	
C	9413	S. Elizabeth	Chicago Bungalow	EJ Kelly	x	Schaflein	24x50x18	7000	1/15/20	Dormer Addition
NC	9416	S. Elizabeth	Chicago Bungalow	Wightman	x	Blommerst	23x58x18	7000	3/11/27	Dormer Addition
C	9417	S. Elizabeth	Chicago Bungalow	EJ Kelly	Lund	Larsen	23x49x20	5800	12/7/25	
C	9418	S. Elizabeth	Chicago Bungalow	EJ Kelly	Lund	Larsen	23x49x20	5800	12/7/25	
C	9419	S. Elizabeth	Chicago Bungalow	EJ Kelly	Lund	Larsen	23x49x20	5800	12/7/25	
C	9422	S. Elizabeth	Chicago Bungalow	EJ Kelly	Lund	Larsen	23x49x20	5800	12/7/25	
C	9423	S. Elizabeth	Chicago Bungalow	EJ Kelly	Lund	Larsen	23x49x20	5800	12/7/25	
C	9424	S. Elizabeth	Chicago Bungalow	EJ Kelly	Lund	Larsen	23x49x20	5800	12/7/25	
C	9428	S. Elizabeth	Chicago Bungalow	EJ Kelly	Lund	Larsen	23x49x20	5800	12/7/25	
C	9429	S. Elizabeth	Chicago Bungalow	EJ Kelly	Lund	Larsen	23x49x20	5800	12/7/25	
C	9430	S. Elizabeth	Chicago Bungalow	EJ Kelly	Lund	Larsen	23x49x20	5800	12/7/25	
C	9430	S. Elizabeth	Garage	x	x	x	x	x	c. 1925	
NC	9431	S. Elizabeth	Chicago Bungalow	EJ Kelly	Lund	Larsen	23x49x20	5800	12/7/25	Dormer Addition
C	9434	S. Elizabeth	Chicago Bungalow	EJ Kelly	Lund	Larsen	23x49x20	5800	12/7/25	
C	9435	S. Elizabeth	Chicago Bungalow	EJ Kelly	Lund	Larsen	23x49x20	5800	12/7/25	
C	9436	S. Elizabeth	Chicago Bungalow	EJ Kelly	Lund	Larsen	23x49x20	5800	12/7/25	
C	9439	S. Elizabeth	Chicago Bungalow	EJ Kelly	Lund	Larsen	23x49x20	5800	12/7/25	
C	9440	S. Elizabeth	Chicago Bungalow	EJ Kelly	Lund	Larsen	23x49x20	5800	12/7/25	
C	9442	S. Elizabeth	Chicago Bungalow	EJ Kelly	Lund	Larsen	23x49x20	5800	12/7/25	
NC	9443	S. Elizabeth	Chicago Bungalow	EJ Kelly	Lund	Larsen	23x49x20	5800	12/7/25	Dormer Addition
S. RACINE AVENUE										
N/A	8900	S. Racine	Vacant Lot	x	x	x	x	x	N/A	Vacant Lot
N/A	8901	S. Racine	Vacant Lot	x	x	x	x	x	N/A	Vacant Lot

Brainerd Bungalow District
Name of Property

Cook County, Illinois
County and State

NC	8909	S. Racine	Ranch	x	x	x	x	x	c. 1973	Out of P.O.S.
N/A	8910	S. Racine	Vacant Lot	x	x	x	x	x	N/A	Vacant Lot
NC	8911	S. Racine	Ranch	x	x	x	x	x	c. 1973	Out of P.O.S.
C	8912	S. Racine	Chicago Bungalow	Matt J. Healy	Johnson	Peterson	23x37x20	5000	4/16/26	
C	8915	S. Racine	Chicago Bungalow	Matt J. Healy	Joneke	J. B. Gutrich	23x37x20	4500	8/23/26	
C	8916	S. Racine	Chicago Bungalow	Matt J. Healy	Johnson	Peterson	23x37x20	5000	4/16/26	
C	8917	S. Racine	Chicago Bungalow	Matt J. Healy	Joneke	J. B. Gutrich	23x37x20	4500	8/23/26	
NC	8918	S. Racine	Chicago Bungalow	Matt J. Healy	Johnson	Peterson	23x37x20	5000	4/16/26	Dormer Addition
C	8921	S. Racine	Chicago Bungalow	Matt J. Healy	Joneke	J. B. Gutrich	23x37x20	4500	8/23/26	
C	8922	S. Racine	Chicago Bungalow	Matt J. Healy	Johnson	Peterson	23x37x20	5000	4/16/26	
C	8923	S. Racine	Chicago Bungalow	Matt J. Healy	Joneke	J. B. Gutrich	23x37x20	4500	8/23/26	
C	8924	S. Racine	Chicago Bungalow	Matt J. Healy	Johnson	Peterson	23x37x20	5000	4/16/26	
NC	8927	S. Racine	Chicago Bungalow	Matt J. Healy	Joneke	J. B. Gutrich	23x37x20	4500	8/23/26	Dormer Addition
C	8928	S. Racine	Chicago Bungalow	Matt J. Healy	Johnson	Peterson	23x37x20	5000	4/16/26	
C	8929	S. Racine	Chicago Bungalow	Matt J. Healy	Joneke	J. B. Gutrich	23x37x20	4500	8/23/26	
C	8930	S. Racine	Chicago Bungalow	Matt J. Healy	Johnson	Peterson	23x37x20	5000	4/16/26	
C	8931	S. Racine	Chicago Bungalow	Matt J. Healy	Joneke	J. B. Gutrich	23x37x20	4500	8/23/26	
C	8934	S. Racine	Chicago Bungalow	Matt J. Healy	Johnson	Peterson	23x37x20	5000	4/16/26	
C	8935	S. Racine	Chicago Bungalow	Matt J. Healy	Joneke	J. B. Gutrich	23x37x20	4500	8/23/26	
C	8936	S. Racine	Chicago Bungalow	Matt J. Healy	Johnson	Peterson	23x37x20	5000	4/16/26	
C	8939	S. Racine	Chicago Bungalow	Matt J. Healy	Joneke	J. B. Gutrich	23x37x20	4500	8/23/26	
C	8940	S. Racine	Chicago Bungalow	Matt J. Healy	Johnson	Peterson	23x37x20	5000	4/16/26	
C	8941	S. Racine	Chicago Bungalow	Matt J. Healy	Joneke	J. B. Gutrich	23x37x20	4500	8/23/26	
NC	8942	S. Racine	Chicago Bungalow	Matt J. Healy	Johnson	Peterson	23x37x20	5000	4/16/26	Attic Expansion
NC	8943	S. Racine	Chicago Bungalow	Matt J. Healy	Joneke	J. B. Gutrich	23x37x20	4500	8/23/26	Dormer Addition
C	8946	S. Racine	Chicago Bungalow	Matt J. Healy	Johnson	Peterson	23x37x20	5000	4/16/26	
C	8947	S. Racine	Chicago Bungalow	Matt J. Healy	Joneke	J. B. Gutrich	23x37x20	4500	8/23/26	
C	8948	S. Racine	Chicago Bungalow	Matt J. Healy	Johnson	Peterson	23x37x20	5000	4/16/26	
C	8949	S. Racine	Chicago Bungalow	Matt J. Healy	Joneke	J. B. Gutrich	23x37x20	4500	8/23/26	
C	8952	S. Racine	Chicago Bungalow	Matt J. Healy	Johnson	Peterson	23x37x20	5000	4/16/26	
C	8955	S. Racine	Chicago Bungalow	Matt J. Healy	Joneke	J. B. Gutrich	23x37x20	4500	8/23/26	

Brainerd Bungalow District
Name of Property

Cook County, Illinois
County and State

NC	9000	S. Racine	Ranch	x	x	x	x	x	c. 1950	Out of P.O.S.
NC	9004	S. Racine	Cape Cod	x	x	x	x	x	c. 1951	Out of P.O.S.
C	9008	S. Racine	Chicago Bungalow	A. Lorenz	R.W. Stott	J.M. Old	21x60x18	6000	2/20/28	
NC	9010	S. Racine	Chicago Bungalow	A. J. Larsen	R.W. Stott	Owner	21x60x20	6000	6/20/28	Dormer Addition
C	9012	S. Racine	Chicago Bungalow	A. J. Larsen	R.W. Stott	Owner	21x60x20	6000	6/20/28	
C	9016	S. Racine	Chicago Bungalow	E W Larson	Stott	C J Larsen	21x60x20	6000	6/5/28	
C	9018	S. Racine	Chicago Bungalow	A J Larsen	Stalt Larsen Co.	Owner	20x60x20	6500	2/10/28	
C	9020	S. Racine	Chicago Bungalow	A O Prens	x	Val Schaflin	24x59x18	6500	2/16/28	
C	9024	S. Racine	Chicago Bungalow	O. Drews	x	Val Schaflin	24x59x18	7000	5/7/28	
C	9024	S. Racine	Garage	x	x	x	x	x	4/1/28	
C	9028	S. Racine	Chicago Bungalow	A. O. Drews	Braucher	Val Schaflin	24x60x18	6500	4/26/28	
C	9030	S. Racine	Chicago Bungalow	J. Rinkema	Braucher	C. A. Kramer	21x54x20	5000	4/25/29	
C	9032	S. Racine	Chicago Bungalow	J. Rinkema	Braucher	C. A. Kramer	21x54x20	5000	4/25/29	
C	9036	S. Racine	Chicago Bungalow	G H Van Dam	Sammons	Gjaltema	24x54x20	6500	12/21/27	
C	9040	S. Racine	Chicago Bungalow	G H Van Dam	Sammons	Gjaltema	24x54x20	6500	12/21/27	
C	9042	S. Racine	Chicago Bungalow	G H Van Dam	Sammons	Gjaltema	24x54x20	6500	12/21/27	
C	9046	S. Racine	Chicago Bungalow	G H Van Dam	Sammons	Gjaltema	24x54x20	6500	12/21/27	
C	9048	S. Racine	Chicago Bungalow	G H Van Dam	Sammons	Gjaltema	24x54x20	6500	12/21/27	
NC	9050	S. Racine	Style unclear, too altered	x	x	x	x	x	c. 1912	Too Altered
NC	9054	S. Racine	Ranch	x	x	x	x	x	c. 1955	Out of P.O.S.
NC	9058	S. Racine	Brick Two-Story	x	x	x	x	x	c. 1955	Out of P.O.S.
NC	9001	S. Racine	Frame house	x	x	x	x	x	c. 1912	Out of P.O.S.
C	9007	S. Racine	Chicago Bungalow	Healy	x	Petersen	23x40x18	5000	3/12/27	
C	9009	S. Racine	Chicago Bungalow	Healy	x	Petersen	23x40x18	5000	3/12/27	
C	9013	S. Racine	Chicago Bungalow	Healy	x	Petersen	23x40x18	5000	3/12/27	
NC	9015	S. Racine	Chicago Bungalow	x	x	x	x	x	x	Attic Expansion
C	9019	S. Racine	Chicago Bungalow	H. Bergstrom	Kocher & Larson	E. Sandstrom	24x61x18	5900	4/25/29	
C	9023	S. Racine	Chicago Bungalow	H. Bergstrom	Kocher & Larson	E. Sandstrom	24x61x18	5900	4/25/29	
C	9023	S. Racine	Garage	x	x	x	x	x	c. 1929	
C	9025	S. Racine	Chicago Bungalow	H. Luetgert	Albion	J. Old	21x54x20	6000	12/20/28	

Brainerd Bungalow District
Name of Property

Cook County, Illinois
County and State

NC	9027	S. Racine	Brick Two-Story	x	x	x	x	x	c. 1943	Out of P.O.S.
C	9031	S. Racine	Chicago Bungalow	Frank Malcott	Sammons	C.A. Kramer	21x50x18	6000	8/2/28	
C	9033	S. Racine	Chicago Bungalow	Healy	x	Petersen	23x40x18	5000	3/12/27	
C	9035	S. Racine	Chicago Bungalow	P. Leonard	Archer	W. Grill	21x55x20	4500	9/24/28	
C	9039	S. Racine	Chicago Bungalow	Johnson	Allison	Ringbloom Bros.	24x63x18	6000	10/28/28	
C	9041	S. Racine	Chicago Bungalow	Johnson	Allison	Ringbloom Bros.	24x63x18	6000	10/28/28	
NC	9045	S. Racine	Chicago Bungalow	Y. Tamiray	W. E. Sammons	Y. Tamiray	24x59x18	8000	3/1/29	2 nd Story Addition
C	9047	S. Racine	Chicago Bungalow	Y. Tamiray	W. E. Sammons	Y. Tamiray	24x59x18	8000	3/1/29	
C	9051	S. Racine	Chicago Bungalow	Y. Tamiray	W. E. Sammons	Y. Tamiray	24x59x18	8000	3/1/29	
NC	9055	S. Racine	Ranch	x	x	x	x	x	c. 1961	Out of P.O.S.
NC	9059	S. Racine	Ranch	x	x	x	x	x	c. 1961	Out of P.O.S.
C	9101	S. Racine	Chicago Bungalow	Robt Volk	x	R. Volk	23x37x20	3900	12/2/26	
C	9105	S. Racine	Chicago Bungalow	Robt Volk	x	R. Volk	23x37x20	3900	12/2/26	
C	9107	S. Racine	Chicago Bungalow	Robt Volk	x	R. Volk	23x37x20	3900	12/2/26	
C	9111	S. Racine	Chicago Bungalow	Robt Volk	x	R. Volk	23x37x20	3900	12/2/26	
C	9113	S. Racine	Chicago Bungalow	Robt Volk	x	R. Volk	23x37x20	3900	12/2/26	
C	9117	S. Racine	Chicago Bungalow	Robt Volk	x	R. Volk	23x37x20	3900	12/2/26	
C	9119	S. Racine	Chicago Bungalow	Robt Volk	x	R. Volk	23x37x20	3900	12/2/26	
NC	9123	S. Racine	Chicago Bungalow	Robt Volk	x	R. Volk	23x37x20	3900	12/2/26	2 nd Story Addition
C	9125	S. Racine	Chicago Bungalow	Robt Volk	x	R. Volk	23x37x20	3900	12/2/26	
C	9127	S. Racine	Chicago Bungalow	Robt Volk	x	R. Volk	23x37x20	3900	12/2/26	
NC	9131	S. Racine	Chicago Bungalow	Robt Volk	x	R. Volk	23x37x20	3900	12/2/26	2 nd Story Addition
C	9133	S. Racine	Chicago Bungalow	Robt Volk	x	R. Volk	23x37x20	3900	12/2/26	
C	9137	S. Racine	Chicago Bungalow	Robt Volk	x	R. Volk	23x37x20	3900	12/2/26	
C	9139	S. Racine	Chicago Bungalow	Robt Volk	x	R. Volk	23x37x20	3900	12/2/26	
C	9143	S. Racine	Chicago Bungalow	Robt Volk	x	R. Volk	23x37x20	3900	12/2/26	
C	9145	S. Racine	Chicago Bungalow	Robt Volk	x	R. Volk	23x37x20	3900	12/2/26	
C	9149	S. Racine	Chicago Bungalow	Robt Volk	x	R. Volk	23x37x20	3900	12/2/26	
C	9151	S. Racine	Chicago Bungalow	Robt Volk	x	R. Volk	23x37x20	3900	12/2/26	
C	9155	S. Racine	Chicago Bungalow	Robt Volk	x	R. Volk	23x37x20	3900	12/2/26	
C	9157	S. Racine	Chicago Bungalow	Robt Volk	x	R. Volk	23x37x20	3900	12/2/26	

Brainerd Bungalow District
Name of Property

Cook County, Illinois
County and State

NC	9200	S. Racine	Ranch	x	x	x	x	x	c. 1957	Out of P.O.S.
C	9201	S. Racine	Chicago Bungalow	Healy	Joneke	Gutrich	23x37x20	4500	7/3/26	
C	9201	S. Racine	Garage	x	x	x	x	x	6/22/29	
C	9203	S. Racine	Chicago Bungalow	Gustar Neilsen	Chas S Archer	C J Larson	25x62x18	7000	5/28/31	
C	9204	S. Racine	Chicago Bungalow	J. S. Moroat	R. W. Stott	John Brohl	23x64x20	7500	5/16/29	
C	9206	S. Racine	Chicago Bungalow	J. S. Moroat	R. W. Stott	John Brohl	23x64x20	7500	5/16/29	
C	9207	S. Racine	Chicago Bungalow	W. White	x	C. A. Kramer	24x64x18	6500	5/7/28	
C	9210	S. Racine	Chicago Bungalow	J. S. Moroat	R. W. Stott	John Brohl	23x64x20	7500	5/16/29	
C	9211	S. Racine	Chicago Bungalow	Edwin C. Erickson	A. G. Lund	Loris Host	24x64x18	7500	8/14/28	
C	9212	S. Racine	Chicago Bungalow	H. Bergstrom	Allison	E. Saundstrom	24x59x18	5500	4/25/29	
C	9213	S. Racine	Chicago Bungalow	A Kahlberg	x	G A Bergman	24x54x12	6000	5/8/28	
C	9216	S. Racine	Chicago Bungalow	H. Bergstrom	Allison	E. Saundstrom	24x59x18	5500	4/25/29	
C	9217	S. Racine	Chicago Bungalow	A. O. Drews	Braucher	G. Schalter	24x61x20	5000	1/2/29	
C	9218	S. Racine	Chicago Bungalow	C. J. Larsen	Nordlie	Owner	24x61x18	7000	4/25/29	
C	9219	S. Racine	Chicago Bungalow	P. Leonard	Lautz	W. Grill	24x63x30	5000	9/24/28	
C	9220	S. Racine	Chicago Bungalow	C. J. Larsen	Nordlie	Owner	24x61x18	7000	4/25/29	
NC	9221	S. Racine	Chicago Bungalow	Ohse Bros.	Sammons	Ohse Bros	24x63x20	9000	5/10/28	Dormer Addition
C	9224	S. Racine	Chicago Bungalow	J Noralt	Stolt	x	24x63x20	5500	10/28/29	
C	9226	S. Racine	Chicago Bungalow	J Noralt	Stolt	x	24x63x20	5500	10/28/29	
C	9227	S. Racine	Chicago Bungalow	C A Kramer	Allison	Owner	24x66x18	6500	5/28/31	
C	9230	S. Racine	Chicago Bungalow	John J. McCarthy	Sammons	Val Schaflin	21x57x21	5000	4/25/29	
C	9231	S. Racine	Chicago Bungalow	x	x	x	x	x	c. 1927	
C	9233	S. Racine	Chicago Bungalow	K Van Dam	Sammons	Gjalteman	26x51x20	6500	11/18/27	
C	9233	S. Racine	Garage	x	x	x	x	x	c. 1927	
C	9234	S. Racine	Chicago Bungalow	John J. McCarthy	Sammons	Val Schaflin	21x57x21	5000	4/25/29	
C	9236	S. Racine	Chicago Bungalow	John J. McCarthy	Sammons	Val Schaflin	21x57x21	5000	4/25/29	
C	9237	S. Racine	Chicago Bungalow	Martin Radlke	R. J. Zelinka	R. S. Strikzek	24x58x20	7500	2/5/29	
C	9238	S. Racine	Chicago Bungalow	John J. McCarthy	Sammons	Val Schaflin	21x57x21	5000	4/25/29	
C	9240	S. Racine	Chicago Bungalow	John J. McCarthy	Sammons	Val Schaflin	21x57x21	5000	4/25/29	
C	9241	S. Racine	Chicago Bungalow	McCarthy	Sammons	V Schaflein	21x57x21	5000	4/25/29	
C	9242	S. Racine	Chicago Bungalow	John J. McCarthy	Sammons	Val Schaflin	21x57x21	5000	4/25/29	

Brainerd Bungalow District

Cook County, Illinois

Name of Property

County and State

C	9243	S. Racine	Chicago Bungalow	D W Foos	Archer	W. Grill	24x48x20	6000	11/18/27	
C	9243	S. Racine	Garage	x	x	x	x	x	c. 1927	
C	9244	S. Racine	Chicago Bungalow	O. A. Drews	Braucher	Val Schaflein	24x61x18	5000	4/25/29	
NC	9247	S. Racine	Chicago Bungalow	Mr. Paul Urbau	Kocher & Larson	M.V.J.E. Old	26x56x20	6000	9/12/24	Dormer Addition
C	9248	S. Racine	Chicago Bungalow	Drews	Braucher	G Scholten	24x62x20	5500	6/18/29	
C	9250	S. Racine	Chicago Bungalow	A O Drews	Braucher	V Schaflein	24x63x18	5000	1/20/30	
C	9251	S. Racine	Chicago Bungalow	Strack	A.R. Durkin	Croos	24x41x20	7000	10/22/24	
C	9254	S. Racine	Chicago Bungalow	Victor J Johnson	L J Allison	Herbert Rodman	24x62x18	5000	9/17/30	
C	9255	S. Racine	Chicago Bungalow	Y. Tamray	Sammons	Y. Tamray	23x57x18	9000	5/29/29	
C	9258	S. Racine	Chicago Bungalow	Victor Jonson	Allison	M Kearich	25x65x18	6500	8/7/31	Last Bungalow Built
C	9258	S. Racine	Garage	x	x	x	x	x	4/24/31	
C	9259	S. Racine	Chicago Bungalow	Y. Tamray	Sammons	Y. Tamray	23x57x18	9000	5/29/29	
C	9258	S. Racine	Garage	x	x	x	x	x	c. 1929	
NC	9300	S. Racine	Chicago Bungalow	x	x	x	x	x	c. 1930	Attic Expansion
C	9301	S. Racine	Chicago Bungalow	Malfeldt	Sammons	V Schaflein	24x63x20	8000	6/28/29	
C	9301	S. Racine	Garage	x	x	x	x	x	c. 1929	
C	9304	S. Racine	Chicago Bungalow	Malfeldt	Sammons	Olson & Anderson	24x63x20	8000	6/28/29	
C	9304	S. Racine	Garage	x	x	x	x	x	c. 1929	
C	9305	S. Racine	Chicago Bungalow	Malfeldt	Sammons	V Schaflein	24x63x20	8000	6/28/29	
C	9305	S. Racine	Garage	x	x	x	x	x	c. 1929	
C	9306	S. Racine	Chicago Bungalow	J. Malfeldt	Sammons	Olson & Anderson	24x63x20	8000	4/25/28	
C	9307	S. Racine	Chicago Bungalow	Malfeldt	Sammons	Olson	24x63x20	8000	4/25/28	
NC	9310	S. Racine	Chicago Bungalow	J. Malfeldt	Sammons	Olson & Anderson	24x63x20	8000	4/25/28	Dormer Addition
C	9311	S. Racine	Chicago Bungalow	Wightman	Kramer	Gustavson	23x60x20	7500	9/7/27	
C	9313	S. Racine	Chicago Bungalow	Heinsinger & Wagner Bros	x	D Heinz	24x58x18	6000	6/8/27	
C	9314	S. Racine	Chicago Bungalow	J. Malfeldt	Sammons	Olson & Anderson	24x63x20	8000	4/25/28	
C	9315	S. Racine	Chicago Bungalow	x	x	x	x	x	c. 1927	
C	9316	S. Racine	Chicago Bungalow	J. Malfeldt	Sammons	Olson & Anderson	24x63x20	8000	4/25/28	
C	9319	S. Racine	Chicago Bungalow	x	x	x	x	x	c. 1927	

Brainerd Bungalow District
Name of Property

Cook County, Illinois
County and State

C	9320	S. Racine	Chicago Bungalow	K. Kloosterman	J. Roeddinge r	Val Schefflein	23x51x20	5000	7/2/26	
C	9322	S. Racine	Chicago Bungalow	K. Kloosterman	J. Roeddinge r	Val Schefflein	23x51x20	5000	7/2/26	
C	9323	S. Racine	Chicago Bungalow	x	x	x	x	x	c. 1927	
C	9325	S. Racine	Chicago Bungalow	x	x	x	x	x	c. 1927	
C	9325	<i>S. Racine</i>	<i>Garage</i>	<i>x</i>	<i>x</i>	<i>x</i>	<i>x</i>	<i>x</i>	<i>c. 1927</i>	
C	9326	S. Racine	Chicago Bungalow	K. Kloosterman	J. Roeddinge r	Val Schefflein	23x51x20	5000	7/2/26	
C	9328	S. Racine	Chicago Bungalow	K. Kloosterman	J. Roeddinge r	Val Schefflein	23x51x20	5000	7/2/26	
NC	9329	S. Racine	Chicago Bungalow	x	x	x	x	x	c. 1927	Dormer Addition
C	9331	S. Racine	Chicago Bungalow	x	x	x	x	x	c. 1927	
C	9332	S. Racine	Chicago Bungalow	K. Kloosterman	J. Roeddinge r	Val Schefflein	23x51x20	5000	7/2/26	
C	9334	S. Racine	Chicago Bungalow	K. Kloosterman	J. Roeddinge r	Val Schefflein	23x51x20	5000	7/2/26	
C	9335	S. Racine	Chicago Bungalow	x	x	x	x	x	c. 1927	
C	9337	S. Racine	Chicago Bungalow	x	x	x	x	x	c. 1927	
NC	9338	S. Racine	Chicago Bungalow	K. Kloosterman	x	V Schaflein	23x51x18	6000	9/10/26	2 nd Story Addition
C	9340	S. Racine	Chicago Bungalow	K. Kloosterman	x	V Schaflein	23x51x18	6000	9/10/26	
C	9341	S. Racine	Chicago Bungalow	x	x	x	x	x	c. 1927	
C	9343	S. Racine	Chicago Bungalow	Kloosterman	x	V Schaflein	23x51x18	6000	9/10/26	
C	9344	S. Racine	Chicago Bungalow	K. Kloosterman	x	V Schaflein	23x51x18	6000	9/10/26	
C	9345	S. Racine	Chicago Bungalow	x	x	x	x	x	c. 1927	
C	9346	S. Racine	Chicago Bungalow	K. Kloosterman	x	V Schaflein	23x51x18	6000	9/10/26	
NC	9349	S. Racine	Chicago Bungalow	x	x	x	x	x	c. 1927	Dormer Addition
C	9350	S. Racine	Chicago Bungalow	K. Kloosterman	x	V Schaflein	23x51x18	6000	9/10/26	
C	9351	S. Racine	Chicago Bungalow	x	x	x	x	x	c. 1927	
NC	9352	S. Racine	Chicago Bungalow	K. Kloosterman	x	V Schaflein	23x51x18	6000	9/10/26	Attic Expansion
C	9355	S. Racine	Chicago Bungalow	x	x	x	x	x	c. 1927	
C	9355	<i>S. Racine</i>	<i>Garage</i>	<i>x</i>	<i>x</i>	<i>x</i>	<i>x</i>	<i>x</i>	<i>c. 1927</i>	
NC	9356	S. Racine	Ranch	x	x	x	x	x	c. 1955	Out of P.O.S.

Brainerd Bungalow District
 Name of Property

Cook County, Illinois
 County and State

C	9357	S. Racine	Chicago Bungalow	x	x	x	x	x	c. 1927	
C	9357	S. Racine	Garage	x	x	x	x	x	c. 1927	
NC	9400	S. Racine	Cape Cod	x	x	x	x	x	c. 1951	Out of P.O.S.
NC	9404	S. Racine	Chicago Bungalow	A Schade	Braucher	Smerz Bros	24x62x20	8000	10/25/28	Dormer Addition
C	9406	S. Racine	Chicago Bungalow	A Schade	Braucher	Smerz Bros	24x62x20	8500	5/23/28	
C	9410	S. Racine	Chicago Bungalow	A Schade	Braucher	Smerz Bros	24x62x20	8500	5/23/28	
C	9412	S. Racine	Chicago Bungalow	Stein	Stein	Kramer	23x58x18	6500	6/8/27	
C	9412	S. Racine	Garage	x	x	x	x	x	c. 1927	
C	9416	S. Racine	Chicago Bungalow	A Schade	Braucher	Smerz Bros	24x57x20	7500	11/29/26	
C	9418	S. Racine	Chicago Bungalow	A Schade	x	Smerz Bros	24x58x18	7600	11/29/26	
NC	9420	S. Racine	Chicago Bungalow	A Schade	x	Smerz Bros	24x58x18	7850	7/2/26	Attic Expansion
NC	9422	S. Racine	Chicago Bungalow	A Schade	x	Smerz Bros	24x58x18	7850	7/2/26	Dormer Addition
C	9426	S. Racine	Chicago Bungalow	A Schade	x	Smerz Bros	24x58x18	7850	7/2/26	x
C	9430	S. Racine	Chicago Bungalow	A Schade	x	Smerz Bros	24x58x18	7850	7/2/26	x
C	9434	S. Racine	Chicago Bungalow	A Schade	x	Smerz Bros	24x58x18	7850	7/2/26	
C	9436	S. Racine	Chicago Bungalow	A Schade	x	Smerz Bros	24x58x18	7850	7/2/26	
C	9440	S. Racine	Chicago Bungalow	A Schade	x	Smerz Bros	24x58x18	7850	7/2/26	
C	9442	S. Racine	Chicago Bungalow	A Schade	x	Smerz Bros	24x58x18	7850	7/2/26	
										-
S. MAY STREET										
N/A	8902	S. May	Alley							
NC	8908	S. May	Ranch	x	x	x	x	x	c. 1973	Out of P.O.S.
NC	8910	S. May	Ranch	x	x	x	x	x	c. 1973	Out of P.O.S.
C	8912	S. May	Chicago Bungalow	M J Healy	Joneke	F B Gutrich	23x37x20	4500	8/23/26	
C	8916	S. May	Chicago Bungalow	M J Healy	Joneke	F B Gutrich	23x37x20	4500	8/23/26	
C	8918	S. May	Chicago Bungalow	M J Healy	Joneke	F B Gutrich	23x37x20	4500	8/23/26	
C	8922	S. May	Chicago Bungalow	M J Healy	Joneke	F B Gutrich	23x37x20	4500	8/23/26	
C	8924	S. May	Chicago Bungalow	M J Healy	Joneke	F B Gutrich	23x37x20	4500	8/23/26	
C	8928	S. May	Chicago Bungalow	M J Healy	Joneke	F B Gutrich	23x37x20	4500	8/23/26	
C	8930	S. May	Chicago Bungalow	M J Healy	Joneke	F B Gutrich	23x37x20	4500	8/23/26	
C	8934	S. May	Chicago Bungalow	M J Healy	Joneke	F B Gutrich	23x37x20	4500	8/23/26	

Brainerd Bungalow District
Name of Property

Cook County, Illinois
County and State

8. Statement of Significance

Applicable National Register Criteria

(Mark "x" in one or more boxes for the criteria qualifying the property for National Register listing.)

- A Property is associated with events that have made a significant contribution to the broad patterns of our history.
- B Property is associated with the lives of persons significant in our past.
- C Property embodies the distinctive characteristics of a type, period, or method of construction or represents the work of a master, or possesses high artistic values, or represents a significant and distinguishable entity whose components lack individual distinction.
- D Property has yielded, or is likely to yield, information important in prehistory or history.

Criteria Considerations

(Mark "x" in all the boxes that apply.)

Property is:

- A Owned by a religious institution or used for religious purposes.
- B removed from its original location.
- C a birthplace or grave.
- D a cemetery.
- E a reconstructed building, object, or structure.
- F a commemorative property.
- G less than 50 years old or achieving significance within the past 50 years.

Areas of Significance

(Enter categories from instructions.)

Architecture

Period of Significance

1915 - 1931

Significant Dates

N/A

Significant Person

(Complete only if Criterion B is marked above.)

N/A

Cultural Affiliation (if applicable)

N/A

Architect/Builder

Sammons, William E., McClellan, Edward G.,
Braucher, Joneke, Johnson, et al.

Brainerd Bungalow District

Name of Property

Cook County, Illinois

County and State

Statement of Significance Summary Paragraph (Provide a summary paragraph that includes level of significance, applicable criteria, justification for the period of significance, and any applicable criteria considerations).

The Brainerd Bungalow Historic District meets the National Register Criteria outlined in the Chicago Bungalow Multiple Property Listing. With 528 contributing primary resources, 505 of which are brick Chicago bungalows, and possessed of a high degree of original architectural and urban integrity, the district meets National Register Criterion C for local significance by embodying the characteristics of a distinctive type, period and method of residential construction—the bungalow. Early Chicago bungalow neighborhoods like Brainerd offered working class families the opportunity to own solid, thoughtfully designed homes and build communities within a quiet residential setting. While there was a wide range of architects, developers, builders, and ethnicities contributing to the tapestry of Brainerd, the steady, rhythmic streetscapes create a strong and consistent architectural fabric in the community. Brainerd was an opportunity for bungalow architects and developers to promote the attributes of the functioning, well-built, yet affordable Chicago bungalow.

The Brainerd Bungalow Historic District maintains a strictly residential urban pattern in sharp contrast to Chicago's nineteenth century communities, where residential and commercial and industrial activities overlapped in the built environment. Thus, Brainerd and other bungalow neighborhoods, with their distinctive land use patterns that anticipated Chicago's 1923 adoption of comprehensively zoned land uses and building restrictions, also represent a distinctive type as encompassed by National Register Criterion C. For Criterion C the years of significance are 1915 to 1931, indicating the dates of construction of the first and last significant buildings in the district. Other structures, such as the Fort Dearborn Elementary School (9025 S. Throop Street), multi-unit buildings, and brick two-flats built within the period of significance and possessing adequate architectural integrity are also contributing structures within this district.

HISTORICAL SUMMARY

The development of the Brainerd neighborhood in the 1910s and 1920s was characterized by the rise and enormous popularity of Chicago bungalow neighborhoods between 1907 and the early 1930s. During the first three decades of the twentieth century, Chicago's population doubled as an additional 1.5 million residents settled into the city. During this same period, the number of owner-occupied housing units in Chicago rose from 86,435 in 1900 to 261,750 in 1930. The tens of thousands of one-and-one-half story brick bungalows built in the city's outlying neighborhoods during this time stood at the forefront of the expansion of single-family homeownership. Built together, many times in entire blocks to form a veritable belt around the center city, the unprecedented form of the Chicago bungalow created an entirely novel form of Chicago urbanism.

Early Land Development

The Brainerd neighborhood is located in Washington Heights, a merger of several early settlements. The area was predominantly farmland from the 1830s to 1860s and referred to as North Blue Island when John Blackstone purchased his 9,000 acres in 1839 from what is currently 91st to 115th between Halsted Street and Western Avenue. A tribe of Potawatomi Indians remained in the area until a treaty devised by the U.S. government forced them to leave in 1844 and move to Kansas and Oklahoma.¹ That same year, Blackstone sold the land to Thomas Morgan, a native of Surrey, England, for \$5,450.²

The earliest known non-native settlers in the vicinity were DeWitt Lane, who owned a log cabin near 103rd and Seeley in 1832; Norman Rexford, whose home and tavern were at 91st and Vincennes Rd in 1834; and Jefferson Gardner, original owner of a house at 100th and Beverly, also in 1834.³ More settlers came to the area during the 1840s and 50s, and in the 1860s, Irish and German railroad workers settled near 103rd and Vincennes near "the Crossing" of the Rock Island

¹ A Succinct History of the Ridge. David Herriott, The Beverly Review, Jan 7, 1954.

² Chicago Fact Book Consortium, ed. *Local Community Fact Book: Chicago Metropolitan Area, 1990*. 1995.

³ "Washington Heights once called North Blue Island." Southtown Economist, March 30, 1977.

Brainerd Bungalow District

Name of Property

Cook County, Illinois

County and State

Railroad and the Panhandle Line (Pittsburgh, Cincinnati and St. Louis Railroad). Settlement of the Ridge region began in earnest once Calumet Township was organized in 1862, and included what is now Morgan Park, Washington Heights, Brainerd, Mount Greenwood, and all of Beverly Hills (now Beverly).⁴

By 1874, Washington Heights had enough residents to incorporate. In 1883, the Fernwood subdivision of Washington Heights was registered between 99th and 103rd Streets—the southeast portion—and had over 185 houses by 1885. Other areas, like the portion that would soon become Brainerd, were much slower to grow due to a lack of transit in the early and mid-1880s.⁵

In 1887, the Beverly Hills branch of the Rock Island Railroad lead E. L. Brainerd to grade a right of way and erect a station at 89th and Loomis Streets.⁶ These railroads hastened the drainage of the swampy areas and made way for more settlement,⁷ and in 1890, Washington Heights and Brainerd were annexed to the city of Chicago.⁸ By 1893, E. L. Brainerd built Brainerd Hall across from the station, and 25 families were then living in the district, bounded by 87th and 95th Streets, Vincennes Road and Ashland Avenue. By 1900 “the heights” area of Washington Heights had developed separately as a settlement for upper-income residents and was renamed Beverly.⁹

In 1902, E. L. Brainerd and other early settlers decided to form a community organization called the Men’s Club of Brainerd, then changed its name to Brainerd Improvement Club a year later in order to permit women. The neighborhood at this time was described by one Brainerd pioneer as “the good old days, when Brainerd real estate sold for \$10 a front foot, when there were no paved streets, sewers, or water systems, the few sidewalks were wooden, and a kerosene lamp on the Rock Island Station platform was the only street light in the district.”¹⁰ But apparently, some early residents didn’t feel the same fondness for muddy shoes and dark roads. The first gas lines were piped in 1905 from 79th and Halsted Streets and telephones were installed in 1907, along with the first community store. In 1912, the Chicago Surface Lines extended street car service from 79th Street to the city limits, and in 1913, the Racine Avenue car was extended to 87th Street. Finally, in 1929, the Ashland Avenue line was extended to 95th Street. Loomis was the first street to be paved in 1913, but paving was not picked up again until 1925, when streets north of the Rock Island tracks were completed. Streets south of the tracks were paved in 1927, and finally electric streetlights were installed from 1928 to 1929.¹¹

The Bungalow Years

In the 1920s, the Brainerd neighborhood was taken over by brick Chicago bungalows—a reflection the city’s booming growth during the first three decades of the century and the need to construct affordable housing. While many areas of the city responded either with luxury high-rise apartments or, at the other end of the spectrum, blocks of tenement housing, these new districts of single-family homes provided an alternative, accessible form of living for the middle classes and new populations of immigrants seeking the American dream. Between 1910 and 1930, Chicago developers built tens of thousands of one and one-and-one-half-story brick bungalows on large tracts of land previously occupied by farms and prairie fields.¹² Developers began appealing directly to apartment house residents declaring that for the amount they were paying in rent they could actually own a home. These new bungalow neighborhoods represented a major innovation in Chicago urbanism where a new style of house, unprecedented in the previous century, provided Chicago homebuyers of moderate means with extraordinary levels of domestic comfort made possible through innovative systems of heating, plumbing, and electricity.

⁴ “A Succinct History of the Ridge.” David Herriott, *The Beverly Review*, Jan 7, 1954.

⁵ “Washington Heights.” *Encyclopedia of Chicago* online. Accessed Mar 23, 2016.

⁶ “Brainerd Civic Group to Mark 30th Birthday” *Chicago Daily Tribune*, Mar 5, 1933, p. SB2.

⁷ Chicago Fact Book Consortium, ed. *Local Community Fact Book: Chicago Metropolitan Area, 1990*. 1995.

⁸ “Washington Heights.” *Encyclopedia of Chicago* online. Accessed Mar 23, 2016.

⁹ *Ibid.*

¹⁰ “Brainerd Civic Group to Mark 30th Birthday” *Chicago Daily Tribune*, Mar 5, 1933, p. SB2.

¹¹ *Ibid.*

¹² Homer Hoyt, *One Hundred Years of Land Values in Chicago*, (Chicago: University of Chicago Press, 1933), 245.

Brainerd Bungalow District

Name of Property

Cook County, Illinois

County and State

The bungalow form became a housing style that was national in scope, featured in popular magazines like *Ladies Home Journal*, *Good Housekeeping*, and *The Craftsman*, as well as in pattern books from Aladdin Homes of Bay City, Michigan, and Radford Architectural Company of Chicago. Building kits by Sears Roebuck, Montgomery Ward, and other companies encouraged further popularization of the form. Because Chicago's population was growing so quickly during the peak of the bungalow's popularity, the bungalow form is especially well represented in Chicago.

The first Chicago bungalows in the Brainerd Bungalow Historic District sprouted up in 1915, but building moved at a trickling pace in the 1910s, with a handful of homeowners hiring an architect with the last name Allison, who built a few bungalows along the 9200 block of S. Throop, and A. G. Lund, who built a handful along the 9300 and 9400 blocks of S. Loomis. Brainerd was not heavily populated until the 1920s, when increased accessibility to transportation, affordable housing, and access to jobs made the neighborhood attractive to families looking to escape congested sections of the city. Hundreds of building permits were issued in the mid to late 1920s in Brainerd—peaking in 1927—and it was not until the collapse of the home building market and the onset of the Great Depression that bungalow construction quickly tapered.¹³ This is typical in bungalow districts throughout the city and shows a trend of modest bungalow forms in the 1910s that grow increasingly more decorative into the 1920s before coming to a screeching halt right around 1930. The fact that so much of the district came to exist in a matter of just a few years and that a handful of architects dominated many of these street faces has created an even more cohesive effect in terms of building style and materials.

The homes in the district adhered to the unwritten rules regarding uniform setbacks and regular spacing between buildings that provided a feeling of continuity and community, and indeed many residents even worked at the same places. Fort Dearborn Elementary was completed in 1928 to accommodate the hundreds of families flooding into the area, and streetlights were added in 1928-29.¹⁴ Because of the slowed growth during the Depression, many corner lots were still vacant in the mid-1930s and some street faces in the district, such as the east side of the 9200 block of Elizabeth, were only about half developed before the housing crash and are therefore not contributing to the district.¹⁵ Building began to rebound in the 1940s, and even homes built outside of the period of significance (post-1931) have similar massing and setbacks, maintaining the rhythm of the streetscapes; ranches and cape cods are constructed of materials like brick and limestone, keeping in harmony with their neighboring Chicago bungalows.

Trends of Architects and Developers in the District

While the Chicago bungalows in the Brainerd area did little to counter the criticism over the general uniformity arising from building bungalows packed tightly onto adjacent city lots, the benefit to standardized construction was obvious. The average cost to construct one of these brick bungalows was only around \$5,000-\$7,000, and the earliest bungalows constructed in the 1910s in Brainerd cost only \$3,000-\$3,500.¹⁶ This was a great deal for developers, especially if they bought up several lots at a time and acted as their own contractor, as many did in Brainerd. Chicago bungalows typically measured around 24'x50'x20'¹⁷—and sold for \$8,000-\$9,000 each¹⁸—still a manageable sum for the working class families moving to the area.

The most prolific architects in the district were William E. Sammons, who designed over 40 buildings with a variety of developers and contractors in the area; Braucher who worked on over 30 buildings with a various partners; Joneke, who worked exclusively with developer and Matthew J. Healy and contractor Gutrich on over 40 buildings; Johnson, who also

¹³ Chicago Ancient Building Permits, accessed on microfilm at the Chicago History Museum, Jan-July 2016.

¹⁴ Ibid, and "Brainerd Civic Group to Mark 30th Birthday." Chicago Daily Tribune; Mar 5, 1933; pg. SB2

¹⁵ 1936 Sanborn Fire Insurance Map

¹⁶ Chicago Ancient Building Permits, accessed on microfilm at the Chicago History Museum, Jan-July 2016.

¹⁷ Ibid.

¹⁸ Classified ad 15 – no title. (1925, Jul 26). Chicago Daily Tribune (1923-1963); and Classified ad 22 -- no title. (1927, Apr 17).

Brainerd Bungalow District

Name of Property

Cook County, Illinois

County and State

worked exclusively with developer Matt J. Healy, but with a contractor named Petersen, on 37 buildings; and Edward G. McClellan who worked almost exclusively with developer W. J. Wightman and contractor C. A. Blommaert on close to 70 buildings.

McClellan was a South-Side architect, with an office at 7441 S. Cottage Grove Ave. He also designed the Roberts Temple Church of God in Christ, a designated Chicago Landmark, and houses in the Jackson Park Highlands Chicago Landmark District and in the Beverly and Morgan Park neighborhoods. In 1929, he helped form the Chicago Associated Architects, which later expanded into other chapters around the city, and served as a member of its Board of Directors (Jacques J. Kocher, another prominent architect in Brainerd, was also a charter member who served on the Board of Directors, as were Lund and Lautz, who each designed a handful of bungalows in the district). McClellan designed numerous mixed-use buildings in a variety of architectural styles, including many pre- and post-World War II houses for the Federal Housing Administration in Chicago and the south suburbs.¹⁹ In the Brainerd district, McClellan designed bungalows on the 9200, 9300, and 9400 blocks of Throop; on the 9200, 9300, and 9400 blocks of Ada; and along the 9300 block of Elizabeth. He did work in 1920 on Throop and then returned 7 years later to reconnect with Wightman and Bloomberg to build out the other streets.

Sammons worked on bungalows on the 9000 block of Ada; the 9200 block of Throop; the 9000, 9200 and 9300 blocks of Racine; and on the 9300 block of Elizabeth. Technically, he was a structural engineer, and operated his business from his home at 3522 W. 60th Place for forty-five years before he died at age eighty-two in 1967. All of Sammons' work in Brainerd—including large multi-unit buildings at 9051 S. Ada and 9000 S. Throop—was done at the height of the building boom, from 1927-1930. Most of the bungalows he designed have a hipped roof, polygonal bay, grouped windows, brick and limestone details, and an offset front entrance—typical and slightly more elaborate details on bungalows built at the end of the 1920s.

While there is a uniformity that comes from building a single housing type along entire street faces, Chicago bungalows have subtle stylistic shifts to distinguish them from their neighbors, and developers and architects certainly play within the architectural boundaries. In order to distinguish homes when developing an entire street face or block at a time, Sammons would often vary the limestone detailing and brick color with homes that otherwise have the same shapes, roofs, dormers, and battered brick piers, in order to distinguish them. Brick colors ranged from a saturated yellow to light and dark browns. Most of his bungalows also have brick soldier courses either running straight across the tops of grouped bay windows or bending around the tops of arched windows that topped bay windows. When Sammons wove arched windows into his designs, they were usually single arched windows above the sides of the bay windows, and fixed, divided bisected (or trisected) arched windows that topped the grouped windows on the front of the bays. These soldier courses also ran over basement windows along the bay, many of which have since been filled in with glass block for safety reasons, a common practice in most bungalow districts. Limestone copings top the wing walls—many of which are in surprisingly good condition, and limestone detailing, such as keystones above windows, adds further character to the homes. Limestone planter brackets sit under grouped windows on the fronts of his polygonal bays (originally there would have been limestone planters resting on these, but very few remain in the city due to cracking or theft), keystones and Prairie-style patterns worked into the brickwork throughout the primary façade (IMAGE 7).

In 1920, MJ Healy bought up 14 lots on the 8900 block of S. May and worked with architect Joneke to build a street face of alternating square bay bungalows with offset entrances and bungalows with front entrances and framed, street-facing clipped gables (IMAGE 8). While we see some framed gables in other bungalow neighborhoods, they are not nearly as typical as hipped roofs for this building type, and the developer's decision to alternate between hipped roofs and gables is a way to play with the form while keeping the handsome rhythm of the street face. Another advantage of incorporating framed gable roofs is that it provided an alternative interior layout option while keeping construction costs at a modest \$4500—the cost the rest of the bungalows along this street.²⁰ This extension of space effectively eliminated the need for dormers as a means of expanding attic or second floor living area. The first floors of the gabled bungalows have offset, recessed entrances and identical to those of neighboring bungalows with hipped roofs and dormers.

¹⁹ "Designers of North Side to Form New Body." Chicago Daily Tribune. September 9, 1930. P. 30.

²⁰ Chicago Ancient Building Permits, accessed on microfilm at the Chicago History Museum, Jan-July, 2016

Brainerd Bungalow District

Name of Property

Cook County, Illinois

County and State

While many bungalows followed more common trends with this housing type, there were some anomalies. A unique Tudor revival bungalow variation can be found at 9343 S. Loomis Street—an unusual expression of half timbering in a large, street facing frame gable (IMAGE 9); and William J. Wightman, the most prolific developer in the district, broke with trends at 9401 S. Elizabeth to build an unusual side gable bungalow with an open front porch and central entrance with groupings of three windows on either side—the only one of its kind in the district (IMAGE 10). As with the alternating gable options mentioned above, this playing with form while keeping a standard footprint (in this case, Wightman’s standard 23’x58’x18’) offered a lucky home buyer the option to have a more unique design while keeping Wightman’s construction costs the same as his more typical Chicago bungalow forms.²¹ Other distinct variations include the prominent use of leaded glass in certain areas in the district—especially in clusters of homes on the 9000 and 9200 blocks of S. Racine. The bay windows at 9047 S. Racine have groupings of casements and hopper windows with stunning, remarkably intact organic forms and pink and green glass in each pane (IMAGE 11). Organic designs are relatively common in the stained glass patterns in Brainerd, though some homes also have Prairie-style forms with a variety of geometric shapes adorning the casements and hoppers.

A Growing Community

The first cluster of Chicago bungalows in the district were built in the central portion of the district on the 9200 block of S. Throop, perhaps due to its location next to the park. 9216, 9218, and 9220 S. Throop were all completed on June 2nd, 1915 for \$5000 each. Bungalows built a little later were constructed for even less than this, but likely that was due to price drops for developing entire street faces at once. These first three bungalows were developed by J. Collins, who built a few more bungalows on the same street years later. Collins worked with architect Allison and contractor Kramer, who did a lot of work in the district through the coming years. The 9200 block of S. Throop is not included in the 1920 U.S. Census, but the next bungalow to be built, completed on December 17th of the same year at 9354 S. Loomis for just \$3,000, was picked up by the Census and lists the inhabitants as George and Magdalena Paschold, a husband and wife born in Saxony and Belgium. They were no longer working at ages 65 and 63, so they had the whole place to themselves, unlike the Kuebler family a few doors down at 9416 Loomis, where the parents and their six children, ranging from ages 17 to 5 months, crammed into two bedrooms. All the Kueblers were born in Illinois and Fred, the father, worked in construction, with the only additional income coming in from their oldest daughter, who was a bookkeeper.

Most of the bungalows in the district were inhabited by first generation Americans, their parents emigrated from countries including Ireland, France, Sweden, Luxembourg, Germany, Belgium, Saxony, Holland and Canada, Austria, Italy, and Scotland. Most homeowners were born in Illinois or other Midwestern states, though some had also themselves come directly from the countries listed above. Occupations in the neighborhood included machinist, salesman, clerk, barber, laborer, stenographer, carpenter, bookkeeper, truck driver, printer, and mechanic. While young women still living with their families were sometimes stenographers or book keepers, their mothers often did not work, indicating the shifting roles of women at this time.²²

Fort Dearborn School

In 1926, the City of Chicago cleared the way to build a new school at the “Elizabeth, Throop, 90th and 91st site” (9025 S. Throop Street) in the southeastern portion of Brainerd (IMAGE 12). The sandy colored brick neoclassical school building took the place of the old Gresham Branch on the north side of 89th Street, which was too small and out of the way for growing neighborhood. Construction of the 155’x242’x46’ building was completed for \$500,000 on the last day of February in 1928²³. The school’s first principal, Gilbert H. Wilkinson, stayed at the helm until 1933.²⁴

The school, called the Fort Dearborn School from its inception, was designed by architect John C. Christensen, appointed

²¹ Ibid.

²² 1920 Census. Chicago Ward 32, District 2026.

²³ Chicago Ancient Building Permits, accessed on microfilm at the Chicago History Museum, Jan-July, 2016

²⁴ Forms found in the Chicago Public School files at the Chicago History Museum. No additional sources were cited on the forms.

Brainerd Bungalow District

Name of Property

Cook County, Illinois

County and State

the Board of Education's architect in 1921. This former Deputy Commissioner of Buildings had a passion for innovative and distinctive architecture for public schools, which he felt was sorely needed in order to excite more learning. One journalist described Chicago's public school buildings before Christensen as being "as attractive architecturally as a pickle factory—and just about as inspiring."²⁵ Christensen's ambitious new vision allowed for dozens of distinctive new school buildings to open in 1928 alone, bringing the number of elementary school seats up to 507,402 that year, accommodating what would be by far the largest enrollment numbers in Chicago's history.²⁶ Christensen was also the architect of nearby Ted Lenart Regional Gifted Center (formerly Hookway Elementary School) in Auburn Gresham, and Clara Barton Elementary School in the West Chatham neighborhood. Both of those schools are also contributing resources to Chicago Bungalow Historic Districts. All three of these schools use the same architectural plans, though Fort Dearborn uses the sandy colored brick vs. the red brick used to construct the other two schools.

Overcrowding revisited the neighborhood in the early 1970s and resulted in the construction of an addition to Fort Dearborn School at 91st Street and Vincennes Avenue (IMAGES 13-16), as well as mobile classrooms that were ill equipped to handle a community suddenly bursting at the seams. Fort Dearborn School was originally built to accommodate 800 students, but in the mid-1960s, the community made a dramatic shift from an older, white, Catholic community to a younger African American community with young children.²⁷ With more density per household as well as a neighborhood that had maximized its housing stock over the past half century by building on previously empty lots, the population shift was intense. The permanent addition, located at the southwest portion of the school is entirely distinct from the original 1920s building, which retains its original fenestration and detailing. The primary façade of the school (east side) is unaffected by the addition, which starts at the rear portion of the south façade and wraps around the back, western façade.

Brainerd Park

Brainerd Park is bounded by 91st St. to the north, Racine Ave. to the east, 92nd St. to the south, and Throop St. to the west. The demand for recreational space increased when the population soared between 1920 and 1930—a nearly 80% increase in the area. The Ridge Park District, one of 22 independent park boards consolidated into the Chicago Park District in 1934, began to design this parkland in the Brainerd neighborhood. In 1932, the Ridge Park District attempted to purchase property in the neighborhood that was owned by the Chicago Board of Education—a piece of land adjacent to Fort Dearborn School that had always acted as a green space, but had never been developed into a proper park. The Board of Education was agreeable, and the Ridge Park District quickly authorized the purchase of benches and a back-stop for the site. Unfortunately, financial difficulties delayed the transaction. By the time the Chicago Park District was created in 1934, the Ridge Park District had made only an initial down payment on the property. Three years later, in 1937, a delegation from the Brainerd Improvement Association approached the Chicago Park District commissioners, urging them to acquire and develop the park. The Chicago Park District finalized the land purchase the following year. The Chicago Park District quickly began improvements, installing outdoor athletic facilities and constructing a small field house.²⁸

While the Park District's completion date is outside of the period of significance for the area, and is therefore a non-contributing site, the land had never been built on and was always intended to be used as communal recreational space. The fact that every other street around it had been divided into tightly packed lots for development, and because it was adjacent to the school, implies that it was never intended for residential development and was indeed part of a larger plan for the neighborhood. The original field house was taken down in the 1970s and a new structure was built to accommodate growing programming needs for children. The 1970s structure is non-contributing to the district.

Washington Heights from the Great Depression to Present Day

²⁵ "Make Every New School Original is New Method" Chicago Daily Tribune, Jan 22, 1922, p. 22.

²⁶ "Schools Open Tuesday; Ready for Half Million" Chicago Daily Tribune, Aug 29, 1928, p. 29.

²⁷ "Brainerd's Schools in Turmoil" Chicago Tribune, Oct 24, 1971. p. SCL_A6

²⁸ Chicago Park District website. <http://www.chicagoparkdistrict.com/parks/Brainerd-Park/#p0vid4ule2>

Brainerd Bungalow District

Name of Property

Cook County, Illinois

County and State

Brainerd is part of the larger neighborhood of Washington Heights, which tells a story typical of most south side neighborhoods in Chicago. Between the years 1920 to 1930, Washington Heights' population more than doubled to 18,000 residents, then growth slowed through the Depression and World War II. After the war, construction of single-family homes picked up again, and the neighborhood filled in many of the empty lots to reach residential maturity and a population of 25,000 by 1950. Several prominent figures grew up in south side bungalows during these post-war years, including Chicago's Mayor Richard M. Daley, First Lady Michelle Obama, and Richard H. Driehaus. Driehaus, a philanthropist who grew up on the 9200 block of S. Elizabeth St. in the Brainerd Bungalow Historic District, has been a fierce advocate for preserving the Chicago bungalow style and has helped homeowners to maintain these homes through his generous grants, administered by the Historic Chicago Bungalow Association.

As with many south side neighborhoods in the 1950s, demographics began to shift as African Americans moved into Washington Heights, especially east of Halsted Street. The population swelled to 30,000 by 1960, and while the majority of homeowners were still of Irish, Germans, and Swedes, 12% of Washington Heights was African Americans.²⁹ The West Leg extension of the Dan Ryan Expressway, more commonly known as I-57, also cut through the southern half of the community, dividing the area and displacing several long-time residents.

White flight began in earnest in the 1960s, and 2/3rds of white residents left Washington Heights. African Americans had previously been forced to live in certain cramped pockets of the city and finally were able to spread out into other areas of the city to look for better homes and jobs. In fact, 25,000 African Americans moved into the neighborhood during this decade—young families replacing the older white residents who had already raised their children in the previous decades. By 1980, almost all of the white residents had left, but the population level remained relatively stable.³⁰

The 1990s was the first time the neighborhood had seen a population drop, but the number of residents still remained high at 32,000—higher than it had ever been when only white residents of European descent European residents dominated the neighborhood. At this point, only about 400 non-black residents remained—100 were Hispanic, 20 were Asian, and the remaining 300 or so were white. While young families dominated the area for the past three decades, African American homeowners remained in their homes for decades, like their European predecessors, and were now into their 60s. As of 1989, the neighborhood remained middle class, with the annual median family income about \$6000 above the city-wide average, and the percentage of families living below the poverty line was about half that of the city. More than three-fourths of the homes were owner-occupied.³¹

The 2000s showed some decline in the median household income, which, as of 2013, was around \$2,000 less than the median average of Chicago. The median age is now late-30s to mid-40s, and the number of family households is a bit lower than the city average.³² There are three Metra commuter rail stops and a CTA redline stop at 95th street is also available along the Dan Ryan Expressway in nearby Roseland. An abandoned railroad line that ran along the southwestern edge of the community was acquired by the Chicago Park District and converted into the Major Taylor Trail in 2007. It runs between the Dan Ryan Woods in Beverly and the Whistler woods in suburban Riverdale, connecting six neighborhoods and crossing the Calumet River and I-57.³³ Washington Heights also boasts the Woodson Regional Branch of the Chicago Public Library at 95th and Halsted. Woodsen houses the extraordinary Vivian G. Harsh Research Collection of Afro-American History and Literature, the largest African American history and literature collection in the Midwest, which documents the black experience with a strong focus on Chicago.³⁴

9. Major Bibliographical References

²⁹ Local Community Fact Book, Chicago Metropolitan Area 1990. Edited by The Chicago Fact Book Consortium, The University of Illinois at Chicago.

³⁰ Ibid.

³¹ Ibid.

³² City Data website. <http://www.city-data.com/neighborhood/Washington-Heights-Chicago-IL.html>

³³ Chicago Park District website. <http://www.chicagoparkdistrict.com/parks/major-taylor-bike-trail/>

³⁴ Chicago Public Library Website. <http://www.chipublib.org/vivian-g-harsh-research-collection/>

Brainerd Bungalow District

Name of Property

Cook County, Illinois

County and State

Bibliography (Cite the books, articles, and other sources used in preparing this form.)

**See works cited in footnotes as well as:*

Abbott, Edith. *The Tenements of Chicago, 1908-1935* (Chicago: University of Chicago Press, 1936).

Biggott, Joseph C. *From Cottage to Bungalow, Houses and the Working Class in Metropolitan Chicago, 1869-1929* (Chicago: University of Chicago Press, 2001).

Building Brick Association of America. *One Hundred Bungalows* (Boston: Rogers & Manson, 1912).

Clark, Clifford Edward Jr. *The American Family Home, 1800-1960* (Chapel Hill: University of North Carolina Press, 1986).

Comstock, William T. *Bungalows, Camps and Mountain Houses* (New York: William T. Comstock, 1908).

Eyre, Wilson. "The Purpose of the Bungalow," *Country Life in America*, 19 (February, 1911).

Hoyt, Homer. *One Hundred Years of Land Values in Chicago* (Chicago: University of Chicago Press, 1933).

Jacobsen, James E. "Des Moines Residential Growth and Development, 1900-1942; The Bungalow and the Square House," *Multiple Property Documentation Form*, (June, 2000).

King, Anthony D. *The Bungalow. The Production of a Global Culture* (London: Routledge & Kegan Paul, 1984).

Lancaster, Clay. *The American Bungalow* (New York: Abbeville Press, 1985).

Pacyga, Dominic A. and Charles Shanabruch, Editors, *The Chicago Bungalow*, (Chicago: Arcadia Publishing, 2001).

Prosser, Daniel J. "Chicago and the Bungalow Boom of the 1920s," *Chicago History*, 10 (Summer 1981).

Radford Architectural Company. *Radford's Artistic Bungalows* (Chicago: The Radford Architectural Company, 1908).

Riley, Phil M. "What is a Bungalow," *Country Life in America* 22 (July 15, 1912): 11-12, 48.

Saylor, Henry H. *Bungalows: Their Design, Construction and Furnishing, with Suggestions also for Camps, Summer Homes and Cottages of Similar Character* (New York: McBride, Winston & Company, 1911).

Sinkevitch, Alice. *AIA Guide to Chicago* (New York: Harcourt, Brace & Company, 1993).

Stickley, Gustav. *Craftsman Homes, 1909, Reprint*, (New York: Random House, 1995).

Webb, Warfield. "Why Bungalows Are So Popular," *Keith's Magazine* 33 (April 1915).

White, Charles E. *The Bungalow Book* (New York: MacMillan Company, 1923).

Winter, Robert. *The California Bungalow* (Los Angeles: Hennessey & Ingalls, 1980).

Wright, Gwendolyn. *Moralism and the Model Home; Domestic Conflict and Cultural Conflict in Chicago, 1873-1913* (Chicago: University of Chicago Press, 1980).

Brainerd Bungalow District
Name of Property

Cook County, Illinois
County and State

Previous documentation on file (NPS):

- preliminary determination of individual listing (36 CFR 67 has been requested)
- previously listed in the National Register
- previously determined eligible by the National Register
- designated a National Historic Landmark
- recorded by Historic American Buildings Survey # _____

- recorded by Historic American Engineering Record # _____
- recorded by Historic American Landscape Survey # _____

Primary location of additional data:

- State Historic Preservation Office
 - Other State agency
 - Federal agency
 - Local government
 - University
 - Other
- Name of repository: Chicago History Museum; Harold Washington Public Library, Chicago

Historic Resources Survey Number (if assigned):

10. Geographical Data

Acreage of Property App. 129

(Do not include previously listed resource acreage; enter "Less than one" if the acreage is .99 or less)

Latitude/Longitude Coordinates

Datum if other than WGS84: _____
(enter coordinates to 6 decimal places)

1	<u>41°43'55.05"N</u> Latitude	<u>87°39'31.11"W</u> Longitude	3	<u>41°43'18.40"N</u> Latitude	<u>87°39'6.31"W</u> Longitude
2	<u>41°43'55.53"N</u> Latitude	<u>87°39'7.21"W</u> Longitude	4	<u>41°43'18.18"N</u> Latitude	<u>87°39'30.63"W</u> Longitude

Verbal Boundary Description (Describe the boundaries of the property.)

*See map of Brainerd Bungalow Historic District on the following page. All crossed out properties or street faces are noncontributing to the district, and the thick line surrounding the streets indicates the district boundaries. Images included separately with the nomination are all keyed to a map as well.

The district is roughly bounded by S. May Street to the east, 95th Street to the south, S. Loomis Street to the west, and 89th Street to the north. The following areas are encompassed:

- S. Loomis Street: 9200, 9300, & 9400 blocks
- S. Ada Street: 9000, 9200, 9300 & 9400 blocks
- S. Throop Street: 8900, 9000, 9200, 9300, 9400 blocks
- S. Elizabeth Street: 8900, 9000, 9200, 9300 & 9400 blocks
- S. Racine Avenue: 8900, 9000, 9100, 9200, 9300 & 9400 blocks
- S. May Street: 8900 blocks

Boundary Justification (Explain why the boundaries were selected.)

The district boundaries were determined by the criteria in the Chicago Bungalow Multiple Property Listing (MPL). Street faces are required to have a 2/3rds majority of contributing Chicago Bungalows.

Both 89th Street and 95th Street were hard lines between different periods of development in the district, and properties on the other sides of those lines were developed in the decades after the period of significance. The boundaries on the east

Brainerd Bungalow District
Name of Property

Cook County, Illinois
County and State

and west sides of the district were determined by a lack of critical mass of contributing bungalows. Some streets had no bungalows or were developed in the 1940s-60s. Others had Chicago bungalows, but did not have the majority needed to satisfy the requirements in the MPL.

11. Form Prepared By

name/title Carla Bruni, Angela Pauldine, John Schulte date July 15, 2016
organization Historic Chicago Bungalow Association telephone 847-401-3587
street & number 53 W. Jackson Blvd. #1122 email carlabruni@gmail.com
city or town Chicago state IL zip code 60604

Additional Documentation

Submit the following items with the completed form:

- **GIS Location Map (Google Earth or BING)**
- **Local Location Map**
- **Site Plan**
- **Floor Plans (As Applicable) N/A**
- **Photo Location Map** (Include for historic districts and properties having large acreage or numerous resources. Key all photographs to this map and insert immediately after the photo log and before the list of figures).

Photographs:

Submit clear and descriptive photographs. The size of each image must be 3000x2000 pixels, at 300 ppi (pixels per inch) or larger. Key all photographs to the sketch map. Each photograph must be numbered and that number must correspond to the photograph number on the photo log. For simplicity, the name of the photographer, photo date, etc. may be listed once on the photograph log and doesn't need to be labeled on every photograph.

Photo Log

Name of Property: Brainerd Bungalow Historic District
City or Vicinity: Chicago
County: Cook **State:** Illinois
Photographer: Carla Bruni
Date Photographed: January – June 2016

Description of Photograph(s) and number, include description of view indicating direction of camera:

Photo 1 of 35:	8900 Block of S. Throop (West Side, Facing Northwest)
Photo 2 of 35	8900 Block of S. Throop (East Side, Facing Northeast)
Photo 3 of 35	8900 Block of S. Elizabeth (West Side, Facing Northeast)
Photo 4 of 35	8900 Bloc, of S. Elizabeth (East Side, Facing Northeast)
Photo 5 of 35	8900 Block of S. Racine (West Side, Facing Southwest)
Photo 6 of 35	8900 Block of Racine (East Side, Facing Southeast)

Brainerd Bungalow District

Cook County, Illinois

Name of Property

County and State

Photo 7 of 35	8900 Block of S. May (West Side, Facing Northwest)
Photo 8 of 35	1300 Block of 91st (North Side, Facing Northeast)
Photo 9 of 35	9000 Block of S. Ada (West Side, Facing Southwest)
Photo 10 of 35	9000 Block of S. Ada (East Side, Facing Southeast)
Photo 11 of 35	9000 Block of S. Throop (West Side, Facing Southwest)
Photo 12 of 35	9000 Block of S. Throop (East Side, Facing Southeast)
Photo 13 of 35	9000 Block of S. Elizabeth (West Side, Facing Southwest)
Photo 14 of 35	9000 Block of S. Elizabeth (East Side, Facing Southeast)
Photo 15 of 35	9000 Block of S. Racine (West Side, Facing Southwest)
Photo 16 of 35	9000 Block of S. Racine (East Side, Facing Southeast)
Photo 17 of 35	9100 Block of S. Racine (West Side, Facing Southwest)
Photo 18 of 35	9100 Block of S. Racine (East Side, Facing Northeast)
Photo 19 of 35	9200 Block of S. Loomis (East Side, facing Southeast)
Photo 20 of 35	9200 Block of S. Ada (West Side, Facing Northwest)
Photo 21 of 35	9200 Block of S. Ada (East Side, Facing Northeast)
Photo 22 of 35	9200 Block of S. Throop (West Side, Facing Northwest)
Photo 23 of 35	9200 Block of S. Throop (East Side, Facing Southeast)
Photo 24 of 35	9200 Block of S. Elizabeth (West Side, Facing Northwest)
Photo 25 of 35	9200 Block of S. Racine (West Side, Facing Northwest)
Photo 26 of 35	9300 Block of S. Loomis (West Side, Facing Northwest)
Photo 27 of 35	9300 Block of S. Ada (West Side, Facing Southwest)
Photo 28 of 35	9300 Block of S. Throop (East Side, Facing Northeast)
Photo 29 of 35	9300 Block of S. Elizabeth (West Side, Facing Northwest)
Photo 30 of 35	9300 Block of S. Racine (East Side, Facing Southeast)
Photo 31 of 35	9400 Block of S. Loomis (East Side, Facing Southeast)
Photo 32 of 35	9400 Block of S. Ada (East Side, Facing Southeast)
Photo 33 of 35	9400 Block of S. Throop (West Side, Facing Northwest)
Photo 34 of 35	9400 Block of S. Elizabeth (West Side, Facing Northwest)
Photo 35 of 35	9400 Block of S. Racine (West Side, Facing Northwest)

Paperwork Reduction Act Statement: This information is being collected for applications to the National Register of Historic Places to nominate properties for listing or determine eligibility for listing, to list properties, and to amend existing listings. Response to this request is required to obtain a benefit in accordance with the National Historic Preservation Act, as amended (16 U.S.C.460 et seq.).

Estimated Burden Statement: Public reporting burden for this form is estimated to average 100 hours per response including time for reviewing instructions, gathering and maintaining data, and completing and reviewing the form. Direct comments regarding this burden estimate or any aspect of this form to the Office of Planning and Performance Management, U.S. Dept. of the Interior, 1849 C. Street, NW, Washington, DC

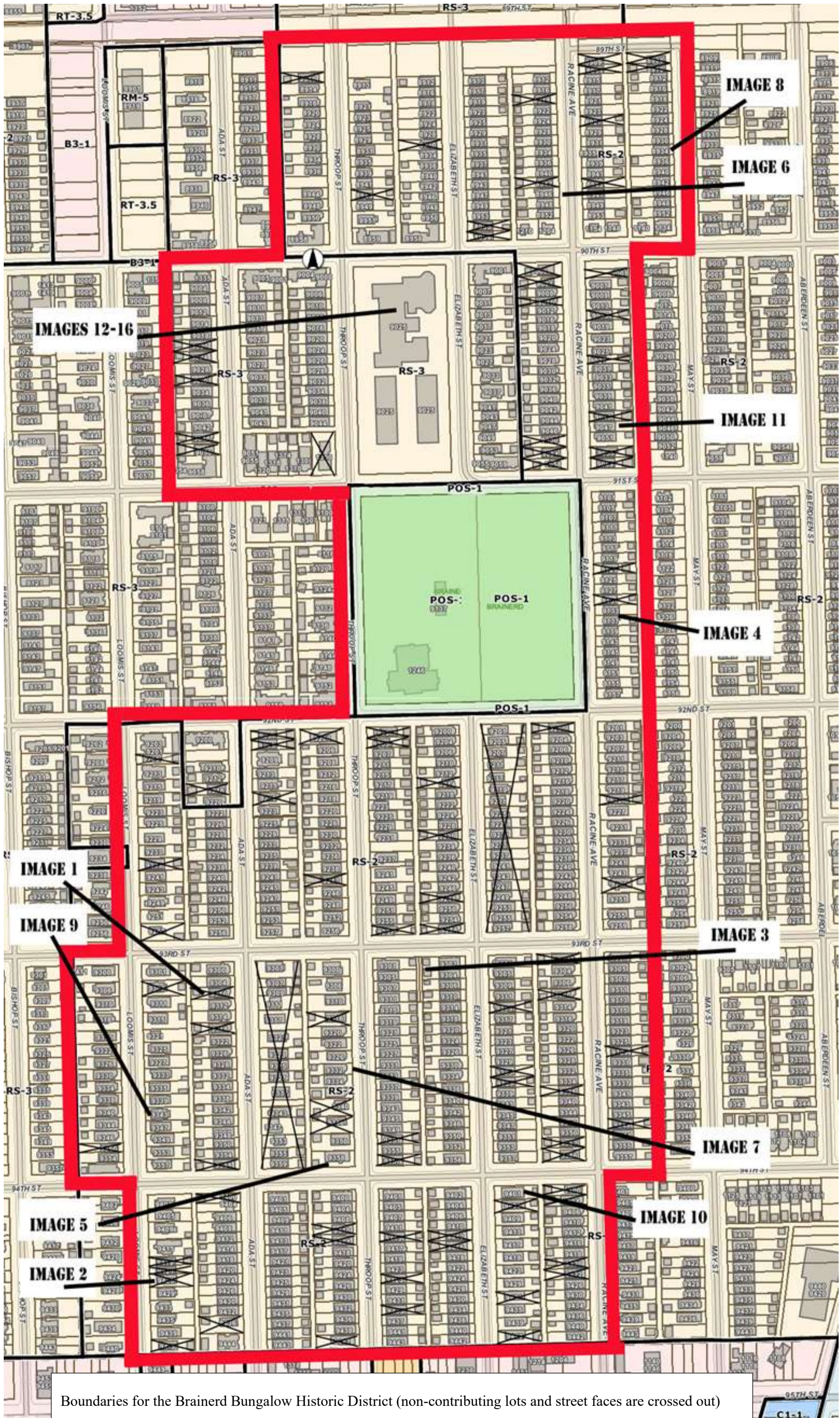
Brainerd Bungalow District
Name of Property

Cook County, Illinois
County and State



Brainerd Bungalow District
Name of Property

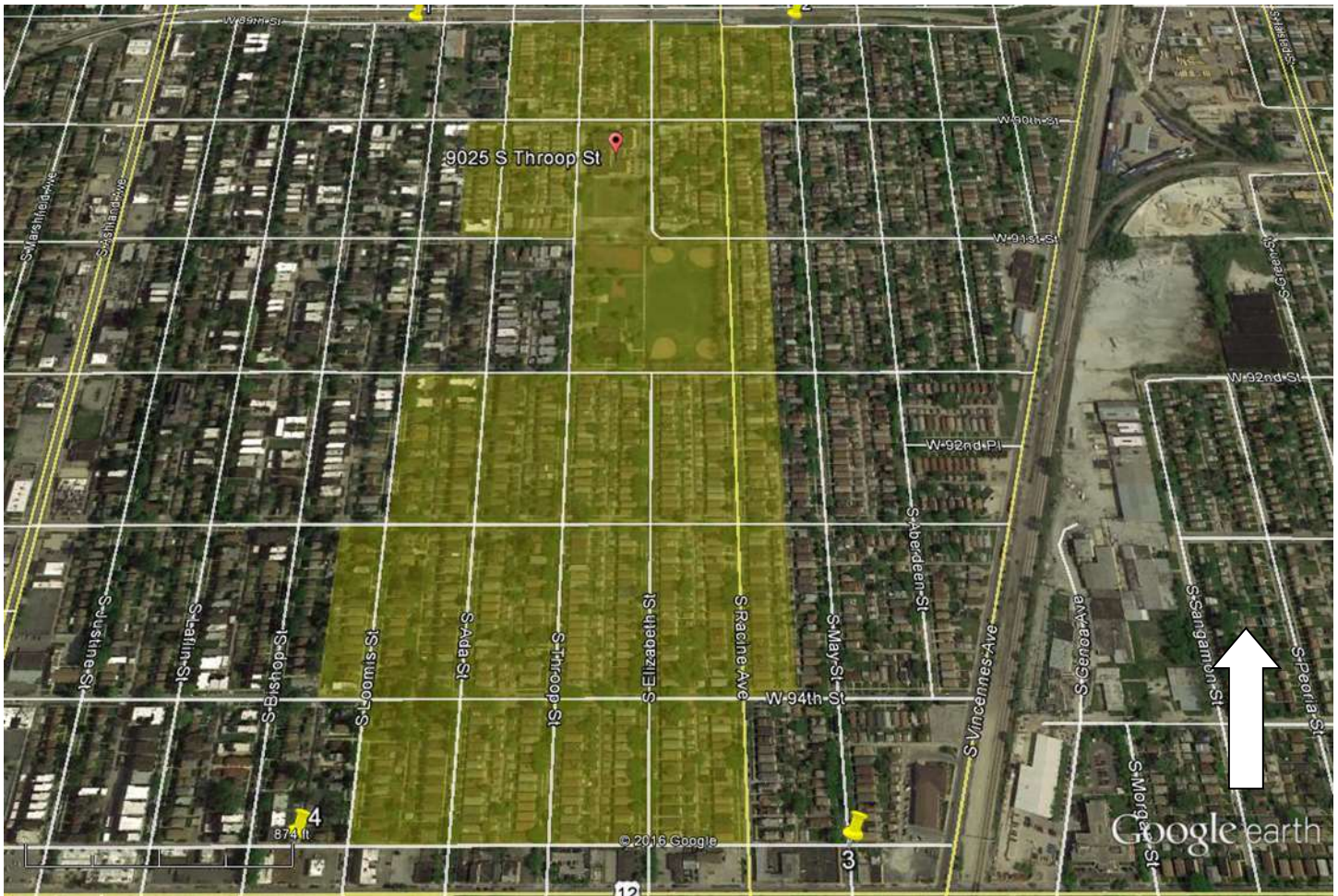
Cook County, Illinois
County and State



Boundaries for the Brainerd Bungalow Historic District (non-contributing lots and street faces are crossed out)

Brainerd Bungalow District
Name of Property

Cook County, Illinois
County and State



Brainerd Bungalow Historic District
Latitude/Longitude Coordinates

- | | |
|------------------|---------------|
| 1. 41°43'55.05"N | 87°39'31.11"W |
| 2. 41°43'55.53"N | 87°39'7.21"W |
| 3. 41°43'18.40"N | 87°39'6.31"W |
| 4. 41°43'18.18"N | 87°39'30.63"W |

Brainerd Bungalow District

Name of Property

Cook County, Illinois

County and State

IMAGES

Image 1 of 16: An example of a bungalow that is noncontributing due to a dormer addition at 9310 S. Ada.

Image 2 of 16: An example of a bungalow that is noncontributing due to a second-story addition at 9425 S. Loomis.

Image 3 of 16: An example of a contributing garage at 9304 S. Racine.

Image 4 of 16: Flat bays with offset entrances, like these at 9133 and 9137 S. Racine, are the most common style of bungalow in the district.

Image 5 of 16: Three-sided polygonal bays are the second most common bungalow form in the district.

Image 6 of 16: Frame gabled roofs and clipped peaks along the 8900 block of S. Racine.

Image 7 of 16: Example of Sammon's bungalows along the 9300 block of S. Throop with arched entryways, battered piers, and varying brick colors.

Image 8 of 16: An example of alternating rooflines to create more diversity on a bungalow block. Along 8900 S. May, varying roof lines and square bay bungalows with offset entrances alternate with bungalows with front entrances and framed, street-facing, clipped gables.

Image 9 of 16: A unique Tudor revival-style bungalow variation can be found at 9343 S. Loomis Street.

Image 10 of 16: A unique open front porch with side gable and a large dormer at 9401 S. Elizabeth Street.

Image 11 of 16: The bay windows at 9047 S. Racine have groupings of casements and hopper windows with stunning, remarkably intact organic forms and pink and green glass in each pane. Most of the leaded glass that remains in the district has similar designs and coloring.

Image 12 of 16: Historical photo of Fort Dearborn School

Image 13 of 16: Fort Dearborn School in 2016

Image 14 of 16: Beginning of school addition on southwest portion of façade

Image 15 of 16: School addition from different angle, facing northeast.

Image 16 of 16: Rear of school showing where transition from addition to original building at parking lot.

Paperwork Reduction Act Statement: This information is being collected for applications to the National Register of Historic Places to nominate properties for listing or determine eligibility for listing, to list properties, and to amend existing listings. Response to this request is required to obtain a benefit in accordance with the National Historic Preservation Act, as amended (16 U.S.C.460 et seq.).

Estimated Burden Statement: Public reporting burden for this form is estimated to average 100 hours per response including time for reviewing instructions, gathering and maintaining data, and completing and reviewing the form. Direct comments regarding this burden estimate or any aspect of this form to the Office of Planning and Performance Management, U.S. Dept. of the Interior, 1849 C. Street, NW, Washington, DC.

United States Department of the Interior
National Park Service

National Register of Historic Places Continuation Sheet

Brainerd Bungalow Historic District

Name of Property

Cook County, IL

County and State

N/A

Name of multiple listing (if applicable)

Section number Additional Documentation Page 47

List of Figures

(Resize, compact, and paste images of maps and historic documents in this section. Place captions, with figure numbers above each image. Orient maps so that north is at the top of the page, all document should be inserted with the top toward the top of the page.)

IMAGE 1: An example of a bungalow that is noncontributing due to a dormer addition at 9310 S. Ada



United States Department of the Interior
National Park Service

National Register of Historic Places Continuation Sheet

Brainerd Bungalow Historic District

Name of Property

Cook County, IL

County and State

N/A

Name of multiple listing (if applicable)

Section number Additional Documentation

Page 48

IMAGE 2: An example of a bungalow that is noncontributing due to a second-story addition at 9425 S. Loomis.



United States Department of the Interior
National Park Service

National Register of Historic Places Continuation Sheet

Brainerd Bungalow Historic District

Name of Property

Cook County, IL

County and State

N/A

Name of multiple listing (if applicable)

Section number Additional Documentation Page 49

IMAGE 3: An example of a contributing garage at 9304 S. Racine.



United States Department of the Interior
National Park Service

National Register of Historic Places Continuation Sheet

Brainerd Bungalow Historic District

Name of Property

Cook County, IL

County and State

N/A

Name of multiple listing (if applicable)

Section number Additional Documentation Page 50

IMAGE 4: Flat bays with offset entrances, like these at 9133 and 9137 S. Racine, are the most common style of bungalow in the district.



United States Department of the Interior
National Park Service

National Register of Historic Places Continuation Sheet

Brainerd Bungalow Historic District

Name of Property

Cook County, IL

County and State

N/A

Name of multiple listing (if applicable)

Section number Additional Documentation Page 51

IMAGE 5: Three-sided polygonal bays are the second most common bungalow form in the district (9300 block of S. Throop).



United States Department of the Interior
National Park Service

National Register of Historic Places Continuation Sheet

Brainerd Bungalow Historic District

Name of Property

Cook County, IL

County and State

N/A

Name of multiple listing (if applicable)

Section number Additional Documentation

Page 52

IMAGE 6: Frame gabled roofs and clipped peaks along the 8900 block of S. Racine.



United States Department of the Interior
National Park Service

National Register of Historic Places Continuation Sheet

Brainerd Bungalow Historic District

Name of Property

Cook County, IL

County and State

N/A

Name of multiple listing (if applicable)

Section number Additional Documentation Page 53

IMAGE 7: Example of Sammon's bungalows along the 9300 block of S. Throop with arched entryways, battered piers, and varying brick colors.



United States Department of the Interior
National Park Service

National Register of Historic Places Continuation Sheet

Brainerd Bungalow Historic District

Name of Property

Cook County, IL

County and State

N/A

Name of multiple listing (if applicable)

Section number Additional Documentation Page 54

IMAGE 8: An example of alternating rooflines to create more diversity on a bungalow block. Along 8900 S. May, varying roof lines and square bay bungalows with offset entrances alternate with bungalows with front entrances and framed, street-facing, clipped gables.



United States Department of the Interior
National Park Service

National Register of Historic Places Continuation Sheet

Brainerd Bungalow Historic District
Name of Property
Cook County, IL
County and State
N/A
Name of multiple listing (if applicable)

Section number Additional Documentation Page 55

IMAGE 9: A unique Tudor revival-style bungalow variation can be found at 9343 S. Loomis Street.



United States Department of the Interior
National Park Service

National Register of Historic Places Continuation Sheet

Brainerd Bungalow Historic District

Name of Property

Cook County, IL

County and State

N/A

Name of multiple listing (if applicable)

Section number Additional Documentation Page 56

IMAGE 10: A unique open front porch with side gable and a large dormer at 9401 S. Elizabeth Street.



IMAGE 11: The bay windows at 9047 S. Racine have groupings of casements and hopper windows with stunning, remarkably intact organic forms and pink and green glass in each pane.

United States Department of the Interior
National Park Service

National Register of Historic Places Continuation Sheet

Brainerd Bungalow Historic District
Name of Property
Cook County, IL
County and State
N/A
Name of multiple listing (if applicable)

Section number Additional Documentation Page 57



United States Department of the Interior
National Park Service

National Register of Historic Places Continuation Sheet

Brainerd Bungalow Historic District

Name of Property

Cook County, IL

County and State

N/A

Name of multiple listing (if applicable)

Section number Additional Documentation Page 58

IMAGE 12: Historical photo of Fort Dearborn School (exact date unknown), primary façade, facing northeast.



United States Department of the Interior
National Park Service

National Register of Historic Places Continuation Sheet

Brainerd Bungalow Historic District

Name of Property
Cook County, IL

County and State

N/A

Name of multiple listing (if applicable)

Section number Additional Documentation Page 59

IMAGE 13: Fort Dearborn School in 2016, primary façade, facing northwest.



United States Department of the Interior
National Park Service

National Register of Historic Places Continuation Sheet

Brainerd Bungalow Historic District

Name of Property

Cook County, IL

County and State

N/A

Name of multiple listing (if applicable)

Section number Additional Documentation Page 60

IMAGE 14: Beginning of school addition at recessed southwest portion of south façade.



United States Department of the Interior
National Park Service

National Register of Historic Places Continuation Sheet

Brainerd Bungalow Historic District
Name of Property
Cook County, IL
County and State
N/A
Name of multiple listing (if applicable)

Section number Additional Documentation Page 61

IMAGE 15: School addition from different angle, facing northeast.



United States Department of the Interior
National Park Service

National Register of Historic Places Continuation Sheet

Brainerd Bungalow Historic District
Name of Property
Cook County, IL
County and State
N/A
Name of multiple listing (if applicable)

Section number Additional Documentation Page 62

IMAGE 16: Rear of school (west façade) showing where transition from addition to original building at parking lot.



















W 91st
ERD

Google









9006




TOW ZONE

SCHOOL DAYS
7AM-4:30 PM
TOW ZONE

FORT DEARBORN
ELEMENTARY SCHOOL
PARKING NOT
PERMITTED HERE











Brainerd
Park

0 0 0 0 0



3115

9149



2211

2213



5502













1306



9354

9354

9350









9405

9406



E75 9518







8400

UNITED STATES DEPARTMENT OF THE INTERIOR
NATIONAL PARK SERVICE

NATIONAL REGISTER OF HISTORIC PLACES
EVALUATION/RETURN SHEET

Requested Action:

Property Name:

Multiple Name:

State & County:

Date Received: 11/10/2016 Date of Pending List: 12/12/2016 Date of 16th Day: 12/27/2016 Date of 45th Day: 12/27/2016 Date of Weekly List: 1/5/2017

Reference number:

Nominator:

Reason For Review:

- | | | |
|---|--|---|
| <input type="checkbox"/> Appeal | <input type="checkbox"/> PDIL | <input type="checkbox"/> Text/Data Issue |
| <input type="checkbox"/> SHPO Request | <input type="checkbox"/> Landscape | <input type="checkbox"/> Photo |
| <input type="checkbox"/> Waiver | <input type="checkbox"/> National | <input type="checkbox"/> Map/Boundary |
| <input type="checkbox"/> Resubmission | <input type="checkbox"/> Mobile Resource | <input type="checkbox"/> Period |
| <input checked="" type="checkbox"/> Other | <input type="checkbox"/> TCP | <input type="checkbox"/> Less than 50 years |
| | <input type="checkbox"/> CLG | |

Accept Return Reject 12/27/2016 Date

Abstract/Summary Comments:

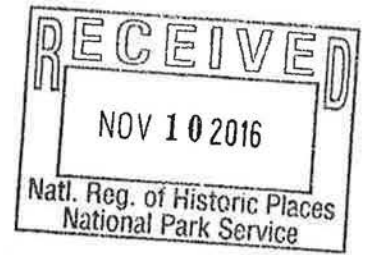
Recommendation/ Criteria:

Reviewer Barbara Wyatt Discipline Historian

Telephone (202)354-2252 Date _____

DOCUMENTATION: see attached comments : No see attached SLR : No

If a nomination is returned to the nomination authority, the nomination is no longer under consideration by the National Park Service.



November 2, 2016

Ms. Barbara Wyatt
National Register of Historic Places Program
National Park Service, Department of the Interior
1201 Eye Street, NW (2280)
Washington, DC 20005

Dear Ms. Wyatt:

Enclosed are the disks that contain the true and correct copies of the National Register nominations recommended for nomination by the Illinois Historic Sites Advisory Council at its October 28, 2016 meeting and signed by the Deputy State Historic Preservation Officer:

Marquette Apartments, Peoria, Peoria County
Turkey Hill Grange Hall, Belleville, St. Clair County
Edward D. Brigham House, Glencoe, Cook County
William and Jennette Sloane House, Elmhurst, DuPage County
Potter and Barker Grain Elevator, La Fox, Kane County
Brainerd Bungalow Historic District, Chicago, Cook County

PLEASE NOTE THAT THE PACKAGE ALSO CONTAINS THE FOLLOWING:

Middletown Historic District (Additional Documentation), Alton, Madison County

Approved at the June 24, 2016 meeting

North Geneva Historic District (Additional Documentation and Boundary Decrease), Geneva, Kane County, IL
Central Geneva Historic District (Additional Documentation and Boundary Increase), Geneva, Kane County, IL

Please contact me at 217/785-4324 if you need any additional information. Thank you for your attention to this matter.

Sincerely,

Andrew Heckenkamp, Coordinator
Survey and National Register program

enclosures

1 Old State Capitol Plaza
Springfield IL 62701

ILLINOISHISTORY.GOV