



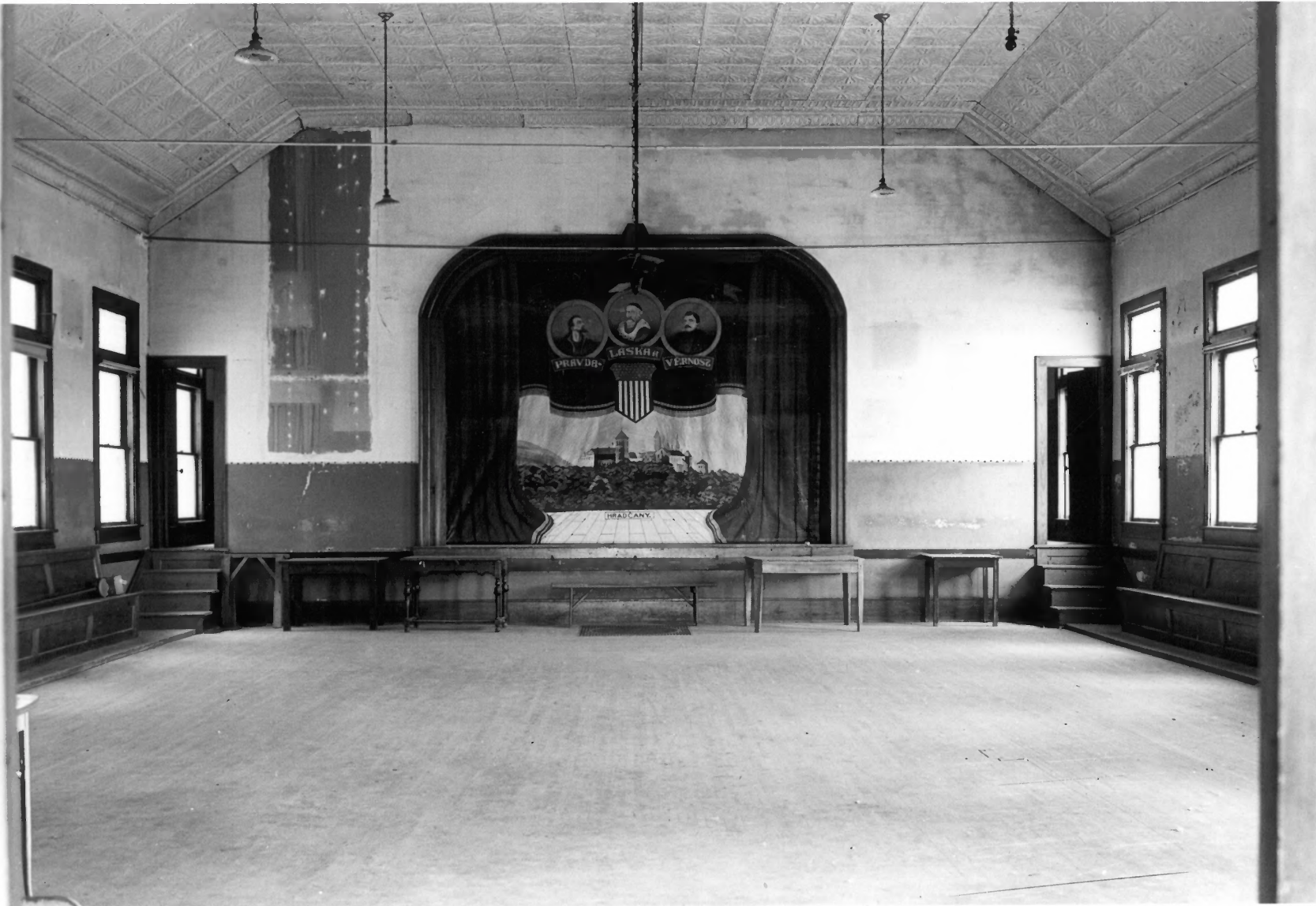
Photo # 2 of 2

Řád Jan Kollár čis. 101 Z. Č. B. J.
rural Pawnee County, Nebraska

NeHBS # PW00-50

Photo by Carol A. Ahlgren, July 1988
Nebraska State Historical Society (8807/1:6)

general view of the building in its setting,
looking northwest



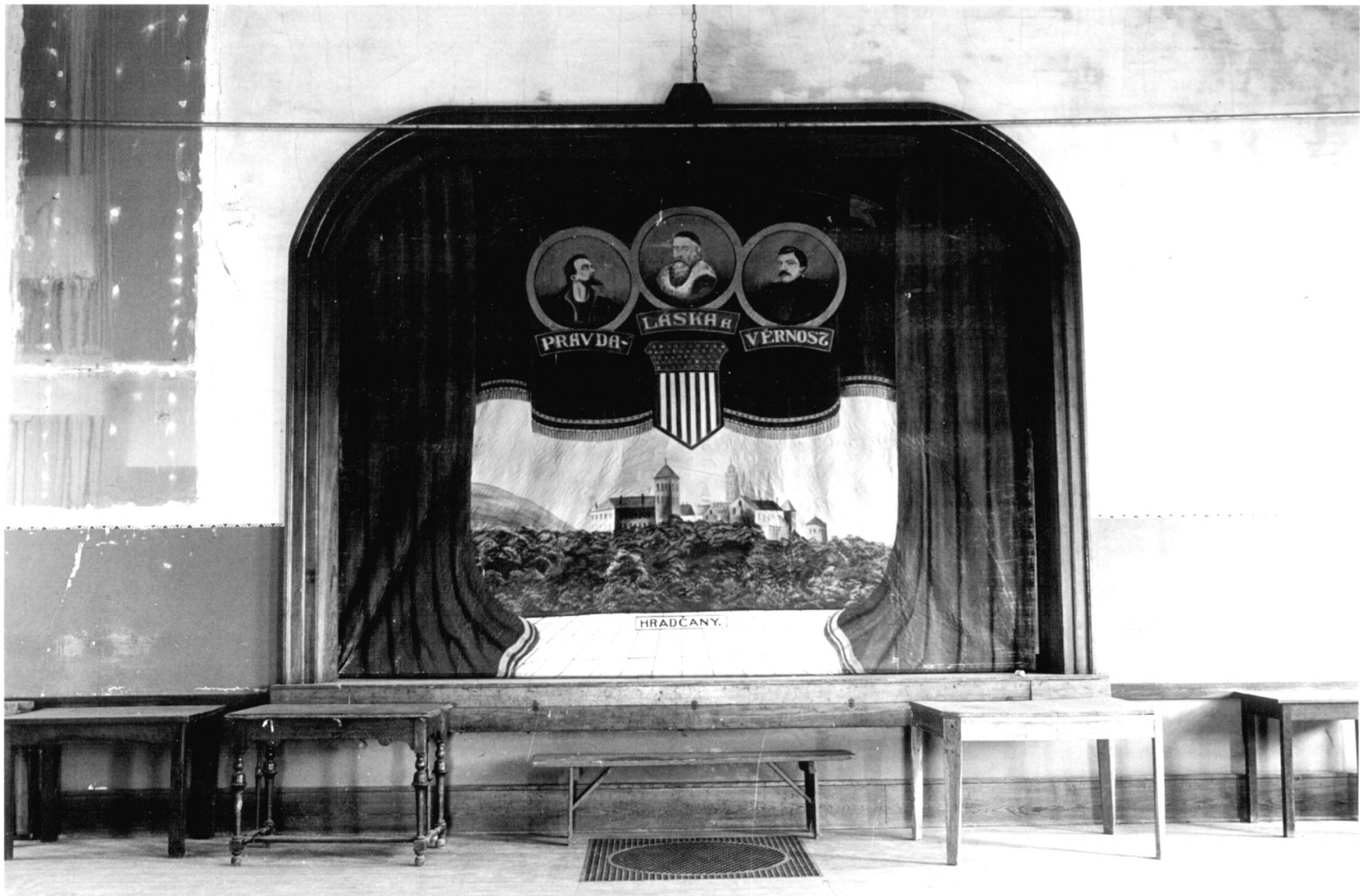
RESTRICTED PHOTO # 1 of 2

Řád Jan Kollár čis. 101 Z.Č.B. J.
rural Pawnee County, Nebraska

WeHBS # FW00-50

Photo by Carol A. Ahlgren, July 1988
Nebraska State Historical Society (8807/1:23)

View of the hall looking north toward the stage



PRAVDA

LASKA

VERNOŠ



HRADČANY

RESTRICTED PHOTO # Z of Z

Řád Jan Kollár čis. 101 Z.Č.B. J.
rural Pawnee County, Nebraska

NeHBS # PW00-50

Photo by Carol A. Ahlgren, July 1988
Nebraska State Historical Society (8807/1:19)

Detail view of the proscenium arch and
stage curtain, looking north.

Photo # 1 of 2

Řád Jan Kollár čis 101 Z.Č.B.J.
rural Pawnee County, Nebraska

NeHS # PW00-50

Photo by Carol A. Ahlgren, July 1988
Nebraska State Historical Society (8807/1:3)

View of the south facade, looking north.

