

United States Department of the Interior
National Park Service

RECEIVED

SEP 22 1988

National Register of Historic Places
Registration Form

NATIONAL
REGISTER

This form is for use in nominating or requesting determinations of eligibility for individual properties or districts. See instructions in *Guidelines for Completing National Register Forms* (National Register Bulletin 16). Complete each item by marking "x" in the appropriate box or by entering the requested information. If an item does not apply to the property being documented, enter "N/A" for "not applicable." For functions, styles, materials, and areas of significance, enter only the categories and subcategories listed in the instructions. For additional space use continuation sheets (Form 10-900a). Type all entries.

1. Name of Property

historic name Keachi Store
other names/site number _____

2. Location

street & number LA Highways 5 and 789 N/A not for publication
city, town Keachi N/A vicinity
state Louisiana code LA county DeSoto code 031 zip code 71046

3. Classification

| | | | |
|---|---|-------------------------------------|------------------|
| Ownership of Property | Category of Property | Number of Resources within Property | |
| <input checked="" type="checkbox"/> private | <input checked="" type="checkbox"/> building(s) | Contributing | Noncontributing |
| <input type="checkbox"/> public-local | <input type="checkbox"/> district | <u>1</u> | _____ buildings |
| <input type="checkbox"/> public-State | <input type="checkbox"/> site | _____ | _____ sites |
| <input type="checkbox"/> public-Federal | <input type="checkbox"/> structure | _____ | _____ structures |
| | <input type="checkbox"/> object | _____ | _____ objects |
| | | <u>1</u> | <u>0</u> Total |

Name of related multiple property listing: N/A
Number of contributing resources previously listed in the National Register 0

4. State/Federal Agency Certification

As the designated authority under the National Historic Preservation Act of 1966, as amended, I hereby certify that this nomination request for determination of eligibility meets the documentation standards for registering properties in the National Register of Historic Places and meets the procedural and professional requirements set forth in 36 CFR Part 60. In my opinion, the property meets does not meet the National Register criteria. See continuation sheet.
Leslie P. Tassin September 19, 1988
Signature of certifying official Leslie P. Tassin, LA State Historic Preservation Officer, Dept of Culture, Recreation and Tourism Date
State or Federal agency and bureau _____

In my opinion, the property meets does not meet the National Register criteria. See continuation sheet.
Signature of commenting or other official _____ Date _____
State or Federal agency and bureau _____

5. National Park Service Certification

I, hereby, certify that this property is:
 entered in the National Register. Andrew Byer 10/20/88
 See continuation sheet.
 determined eligible for the National Register. See continuation sheet.
 determined not eligible for the National Register.
 removed from the National Register.
 other, (explain:) _____
Signature of the Keeper _____ Date of Action _____

6. Function or Use

Historic Functions (enter categories from instructions)

COMMERCE/trade

Current Functions (enter categories from instructions)

Vacant/Not in use

7. Description

Architectural Classification
(enter categories from instructions)Greek Revival

Materials (enter categories from instructions)

foundation brickwalls weatherboard

roof asphaltother

Describe present and historic physical appearance.

The Keachi Store (c.1850) is a frame, temple-style, Greek Revival commercial building located in the small crossroads community of Keachi in rural DeSoto Parish. Although there are some late nineteenth century alterations and some cosmetic deterioration, the store retains its Greek Revival character-defining elements.

The Keachi Store is a conventional mid-nineteenth century commercial building with sales space in the front and living quarters to the rear. (It is not known if the living quarters were ever actually lived in.) Although the store appears to be only one story from the front, the sales space is in fact two stories high, and the rear living space occupies two full floors with a fireplace on each. All this is contained within a unified temple form culminating in a four column projecting portico with a full entablature and strong architraves marking the upper edges of the tympanum. The facade has a very large central door flanked by a pair of massive windows. Flanking the front wall is a pair of pilasters which echo the columns, with their boldly molded capitals and pronounced necking. The pilasters are cut with a sawtooth pattern to enable them to fit snugly against the front clapboarded wall. This might lead one to assume that the pilasters, and indeed the entire classical style portico, are a later addition. But the building's framing system is consistent throughout, demonstrating that there was always a portico.

The present interior is largely the result of a remodeling in the late nineteenth century. At that time a mezzanine balcony with octagonal columns and a simple Italianate balustrade was added on all four sides of the sales space. A pair of winding staircases at the rear of the sales space gave access to the upper (balcony) level. Also, in the late nineteenth century many of the doors and windows were repaired or reworked and a small side wing was added. Much of this reworking was done with reused 1850s materials, and hence it is difficult to tell exactly what was done to the windows and doors, although the openings themselves were retained.

In the twentieth century portions of the winding staircases were removed and the lower portions of the front columns were boxed in due to rot.

As is obvious from the pictures accompanying this submission, the above mentioned alterations have had minimal impact on the store's strong Greek Revival temple-style character.

See continuation sheet

8. Statement of Significance

Certifying official has considered the significance of this property in relation to other properties:

nationally statewide locally

Applicable National Register Criteria A B C D

Criteria Considerations (Exceptions) A B C D E F G N/A

Areas of Significance (enter categories from instructions)

Architecture

Period of Significance

c.1850

Significant Dates

c.1850

Cultural Affiliation

N/A

Significant Person

N/A

Architect/Builder

unknown

State significance of property, and justify criteria, criteria considerations, and areas and periods of significance noted above.

The Keachi Store is of state significance in the area of architecture as an outstanding example both of the Greek Revival and of a Louisiana country store. Firstly, it is exemplary of the Greek Revival rage for articulating any and all building types in the form of a Greek temple. Andrew Jackson Downing complained of the American tendency of the 1830s and '40s to build copious Greek temples for everything from churches, to banks, to insane asylums, to homes, and even privies. How Americans loved that form! As far as the State Historic Preservation Office is aware, the Keachi Store is the only remaining country store in Louisiana which features this kind of Grecian articulation. Presumably there were once many more in crossroads communities across the state. Secondly, the Keachi Store stands far above other Louisiana country stores, most of which date from the late nineteenth century or later, and most of which are humble unpretentious structures with no architectural refinement.

The Keachi Store also should be viewed within its local historic context. DeSoto Parish was settled principally in the two or three decades prior to the Civil War and is one of three parishes (other than New Orleans) considered to be major centers of Greek Revival architecture in the state. Although many examples from this architectural flowering have been lost, including the impressive Keachi Female College, an astounding number survive. DeSoto boasts about twenty residential examples of the style, four churches, a Masonic hall, and the Keachi Store. This special heritage represents the parish's architectural apogee, and the temple-fronted Keachi Store is an important part of this identity.

See continuation sheet

9. Major Bibliographical References

DeSoto Parish Historic Structures Survey, Louisiana State Historic Preservation Office.

Previous documentation on file (NPS): N/A

- preliminary determination of individual listing (36 CFR 67) has been requested
- previously listed in the National Register
- previously determined eligible by the National Register
- designated a National Historic Landmark
- recorded by Historic American Buildings Survey # _____
- recorded by Historic American Engineering Record # _____

See continuation sheet

Primary location of additional data:

- State historic preservation office
- Other State agency
- Federal agency
- Local government
- University
- Other

Specify repository: _____

10. Geographical Data

Acreage of property less than one acre

UTM References

A

| | |
|---|---|
| 1 | 5 |
|---|---|

| | | | | | |
|---|---|---|---|---|---|
| 4 | 1 | 4 | 6 | 4 | 0 |
|---|---|---|---|---|---|

| | | | | | | |
|---|---|---|---|---|---|---|
| 3 | 5 | 6 | 1 | 5 | 0 | 0 |
|---|---|---|---|---|---|---|

Zone Easting Northing

B

| | |
|--|--|
| | |
|--|--|

| | | | | | |
|--|--|--|--|--|--|
| | | | | | |
|--|--|--|--|--|--|

| | | | | | |
|--|--|--|--|--|--|
| | | | | | |
|--|--|--|--|--|--|

Zone Easting Northing

C

| | |
|--|--|
| | |
|--|--|

| | | | | | |
|--|--|--|--|--|--|
| | | | | | |
|--|--|--|--|--|--|

| | | | | | |
|--|--|--|--|--|--|
| | | | | | |
|--|--|--|--|--|--|

D

| | |
|--|--|
| | |
|--|--|

| | | | | | |
|--|--|--|--|--|--|
| | | | | | |
|--|--|--|--|--|--|

| | | | | | |
|--|--|--|--|--|--|
| | | | | | |
|--|--|--|--|--|--|

See continuation sheet

Verbal Boundary Description Please refer to enclosed property plat map. Boundary lines follow property lines and are outlined in yellow.

See continuation sheet

Boundary Justification Boundary lines follow property lines.

See continuation sheet

11. Form Prepared By

ASSISTED BY KEACHI HERITAGE FOUNDATION

name/title National Register Staff
organization Division of Historic Preservation date July 1988
street & number P. O. Box 44247 telephone 504/342-8160
city or town Baton Rouge state Louisiana zip code 70804

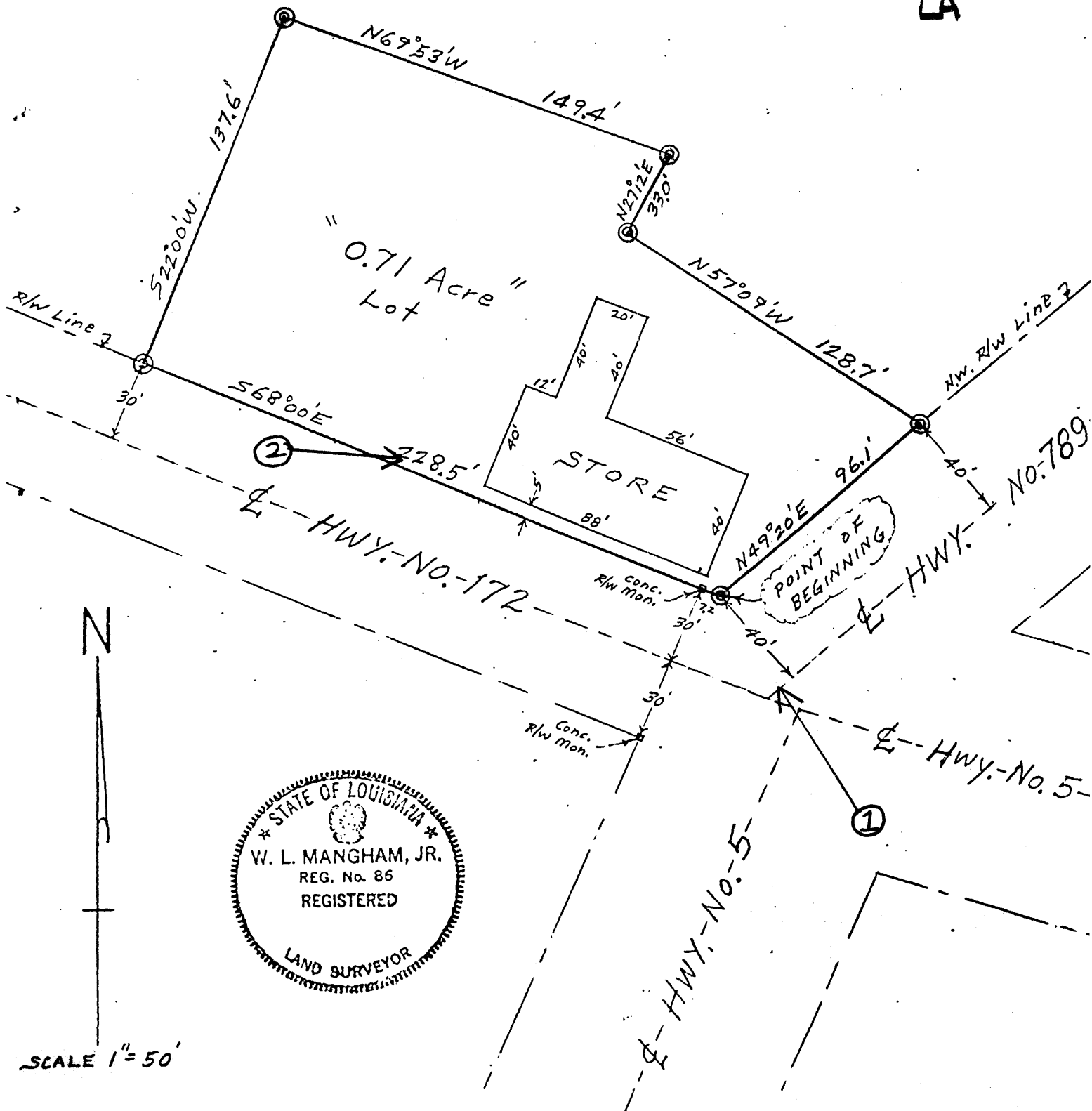
Current Owner: William Bailey Peyton III
819 Lovette Blvd., Houston, TX 77006

Helen Wyatt Danbreun et al

Keachi Store

De Soto Parish

LA



NOTE: POINT OF BEGINNING is approximately 2500' South & 1450' West of NE corner of Section 21, T14N, R15W.

⊙ - indicates Angle Iron set at all Lot corners.

PLAT SHOWING
Survey of 0.71 Acre Lot in
the Town of Keatchie, being
in the SW 1/4 of NE 1/4 of Section
21, T14N, R15W,
De Soto Parish, La.
Surveyed August 24, 1974
by W. L. Mangham, Jr.
P.E.G. SURVEYOR No. 86