



AERIAL VIEW

Bennett - Williams House
608 West Sixth Street
The Dalles, OR 97058

1 of 15 (supplementary)

Aerialview, looking south

Jerry Jeffers Photo 1985
Negative: E. Don Williams
608 West Sixth Street
The Dalles, OR 97058



GAZEBO

Bennett - Williams House
608 West Sixth Street
The Dalles, OR 97058

2 of 15 (supplementary)

View, looking south westerly from
gazebo addition toward historic garage

Jerry Jeffers Photo 1985
Negative: E. Don Williams
608 West Sixth Street
The Dalles, OR 97058



Bennett - Williams House
608 West Sixth Street
The Dalles, OR 97058

3 of 15 (supplementary)

Interior view of entry stairhall,
looking north east

Jerry Jeffers Photo 1985
Negative: E. Don Williams
608 West Sixth Street
The Dalles, OR 97058



Bennett - Williams House
608 West Sixth Street
The Dalles, OR 97058

4 of 15 (supplementary)

Interior view of diningroom,
looking west

Jerry Jeffers Photo 1900
Negative: E. Don Williams
608 West Sixth Street
The Dalles, OR 97058



Bennett - Williams House
608 West Sixth Street
The Dalles, OR 97058

5 of 15 (supplementary)

Interior view of master bedroom
suite upstairs, looking south west

Jerry Jeffers Photo 1985
Negative: E. Don Williams
608 West Sixth Street
The Dalles, OR 97058



Bennett - Williams House
608 West Sixth Street
The Dalles, OR 97058

6 of 15 (supplementary)

Interior view, upstairs bedroom

Jerry Jeffers Photo 1985
Negative: E. Don Williams
608 West Sixth Street
The Dalles, OR 97058



VIEW OF HOUSE
TAKEN APPROXIMATELY 1905

Bennett - Williams House
608 West Sixth Street
The Dalles, OR 97058

7 of 15
East and north elevations from
Sixth Street

Historic View, c. 1905
Negative: E. Don Williams
608 West Sixth Street
The Dalles, OR 97058



DETAIL OF CUPOLA

Bennett - Williams House
608 West Sixth Street
The Dalles, OR 97058

8 of 15

Detail of features above the caves,
north (principal) elevation

Jerry Jeffers Photo 1985
Negative: E. Don Williams
608 West Sixth Street
The Dalles, OR 97058



EAST & NORTH VIEW
FROM WEST THIRD PLACE

Bennett - Williams House
608 West Sixth Street
The Dalles, OR 97058

9 of 15

Looking south from traffic island
at junction of West Third Place and
Sixth Street showing full extent of
generous full-block site.

Jerry Jeffers Photo 1985
Negative: E. Don Williams
608 West Sixth Street
The Dalles, OR 97058



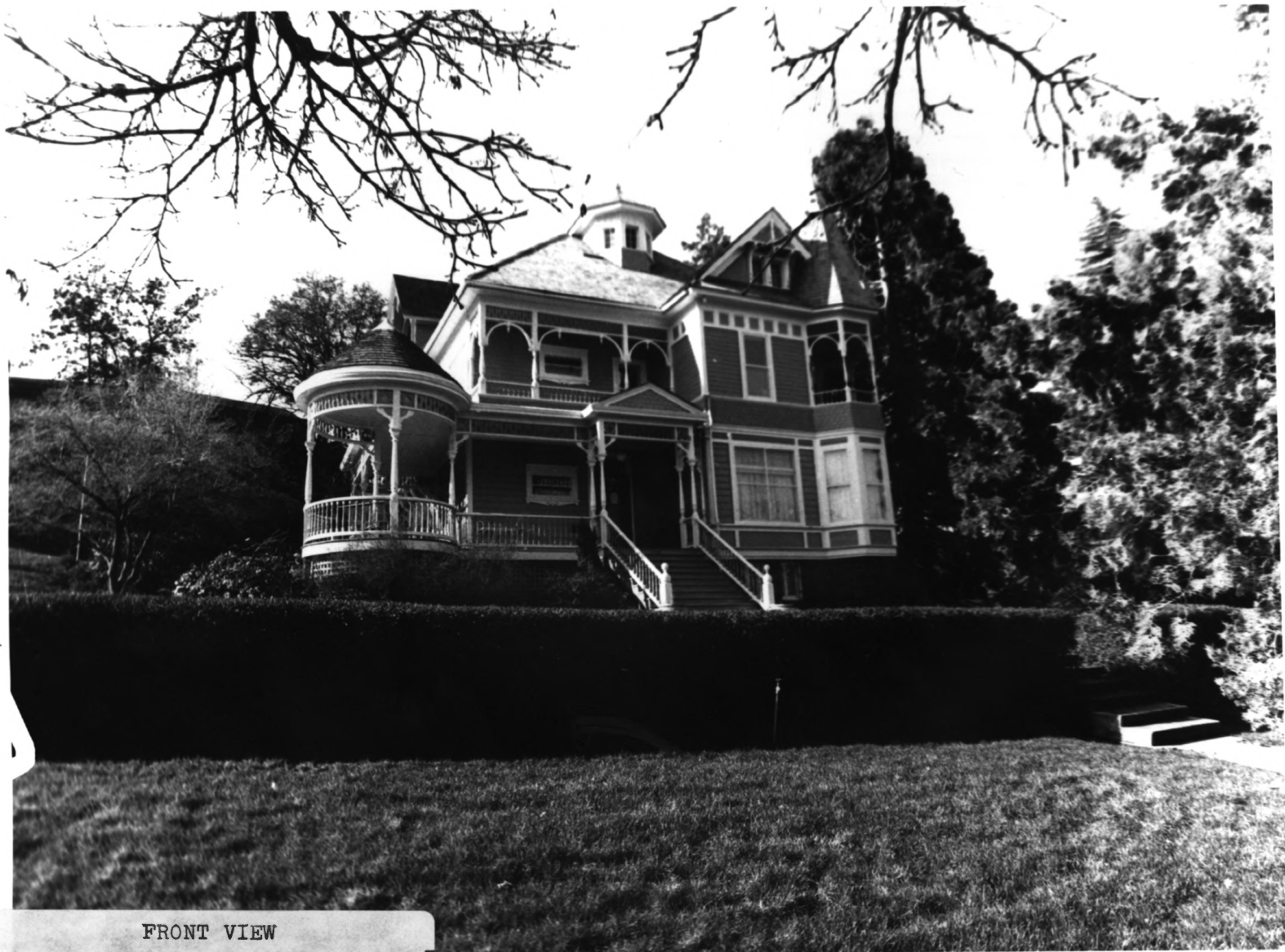
FRONT & SIDE VIEW
CORNER OF TREVIT & WEST SIXTH

Bennett - Williams House
608 West Sixth Street
The Dalles, OR 97058

10 of 15

East and north elevations from parking strip along Sixth Street. Note historic wrought iron railing atop low masonry wall.

Jerry Jeffers Photo 1985
Negative: E. Don Williams
608 West Sixth Street
The Dalles, OR 97058



FRONT VIEW
FROM WEST SIXTH

Bennett - Williams House
608 West Sixth Street
The Dalles, OR 97058

11 of 15

North (principal) facade. Note privet
hedge demar^cates innermost front yard.
^

Jerry Jeffers Photo 1985
Negative: E. Don Williams
608 West Sixth Street
The Dalles, OR 97058



WEST & SOUTH SIDES
SHOWING GAZEBO

Bennett - Williams House
608 West Sixth Street
The Dalles, OR 97058

12 of 15

West and south (rear) elevations
showing compatible gazebo addition.

Jerry Jeffers Photo 1985
Negative: E. Don Williams
608 West Sixth Street
The Dalles, OR 97058



GAZEBO

Bennett - Williams House
608 West Sixth Street
The Dalles, OR 97058

13 of 15

Looking south westerly at compatible
gazebo addition to rear elevation.
Garage in background.

Jerry Jeffers Photo 1985
Negative: E. Don Williams
608 West Sixth Street
The Dalles, OR 97058



EAST VIEW
FROM TREVIT STREET

Bennett - Williams House
608 West Sixth Street
The Dalles, OR 97058

14 of 15

East elevation from Trevitt Street.

Jerry Jeffers Photo 1985
Negative: E. Don Williams
608 West Sixth Street
The Dalles, OR 97058



DETAILING FRONT STEPS

Bennett - Williams House
608 West Sixth Street
The Dalles, OR 97058

15 of 15

Looking southeasterly at north porch.
note basement of native quarry - faced
random - range ashlar.

Jerry Jeffers Photo 1985
Negative: E. Don Williams
608 West Sixth Street
The Dalles, OR 97058