



Photo 1/16

The Esplanade

3015 N. Pennsylvania Street

Indianapolis, IN

View from West; Unit 5.

Photo: John Moyer,

1982



RESTORATION CONSTRUCTION

*The Acquisition  
& Restoration  
Corporation*

317-637-1266

Photo 2/16

The Esplanade

3015 N. Pennsylvania Street

Indianapolis, IN

Angled View of North facade

from West; Unit 7.

Photo: John Moyer,

1982

70

ESPLANADE APTS.  
305 N. PENNSYLVANIA ST.

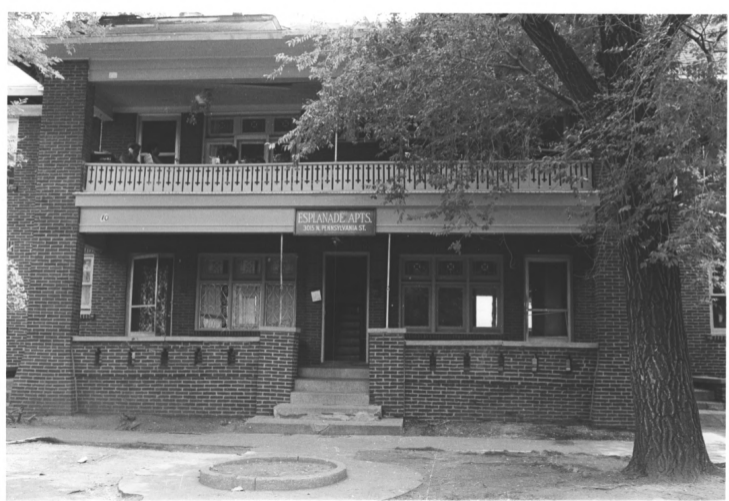


Photo 3/16

The Esplanade

3015 North Pennsylvania Street  
Indianapolis, IN

Center North facade from North;  
Units 9-12.

Photo: John Moyer,

1982



Photo 4/15

The Esplanade

3015 North Pennsylvania Street

Indianapolis, IN

Detail: Bay window from  
Northeast; Unit 6.

Photo: John Moyer, 1982.





Photo 5/16

The Esplanade

3015 North Pennsylvania Street

Indianapolis, IN

Detail: Entrance and solarium  
from East; Unit 4.

Photo: John Moyer, 1982.



Photo 6/15

The Esplanade

3015 North Pennsylvania Street

Indianapolis, IN

General view from South.

Photo: John Moyer, 1982.



Photo 7/16

The Esplanade

3015 North Pennsylvania Street

Indianapolis, IN

South garage facade from South-  
west.

Photo: John Moyer, 1982.



Photo 8/15

The Esplanade

3015 North Pennsylvania Street

Indianapolis, IN

North garage facade from North-  
west.

Photo: John Moyer, 1982.





Photo: 9/16

The Esplanade

3015 North Pennsylvania Street

Indianapolis, IN

Courtyard, elevated view from  
Southwest.

Photo: John Moyer, 1982.



Photo 10/16

The Esplanade

3015 North Pennsylvania Street

Indianapolis, IN

South courtyard facade from  
South.

Photo: John Moyer, 1982.

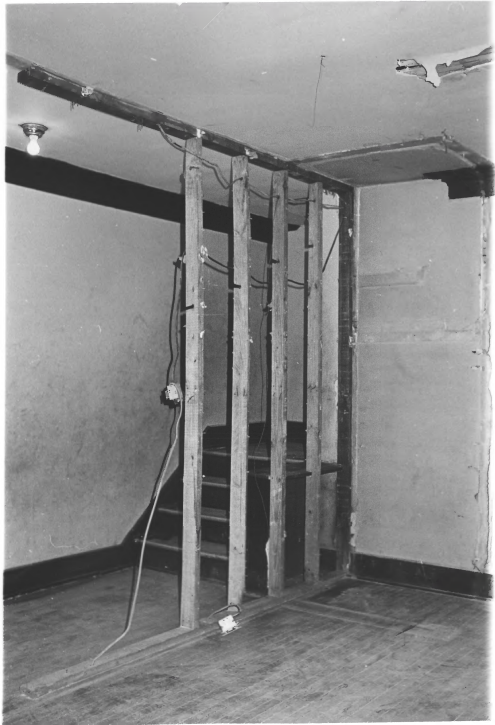


Photo 11/16

The Esplanade

3015 North Pennsylvania Street

Indianapolis, IN

Interior: Typical 1st floor  
staircase; Unit 4.

Photo: John Moyer, 1982.



Photo 12/16

The Esplanade

3015 North Pennsylvania Street  
Indianapolis, IN

Interior: Typical living room  
fireplace; Unit 4.

Photo: John Moyer, 1982.





Photo 13/16

The Esplanade

3015 North Pennsylvania Street  
Indianapolis, IN

Interior: Typical dining room;  
Unit 4.

Photo: John Moyer, 1982.



Photo 14/16

The Esplanade

3015 North Pennsylvania Street  
Indianapolis, IN

Interior: Typical 2nd floor  
bedroom; Unit 4.

Photo: John Moyer, 1982.



Photo 15/16

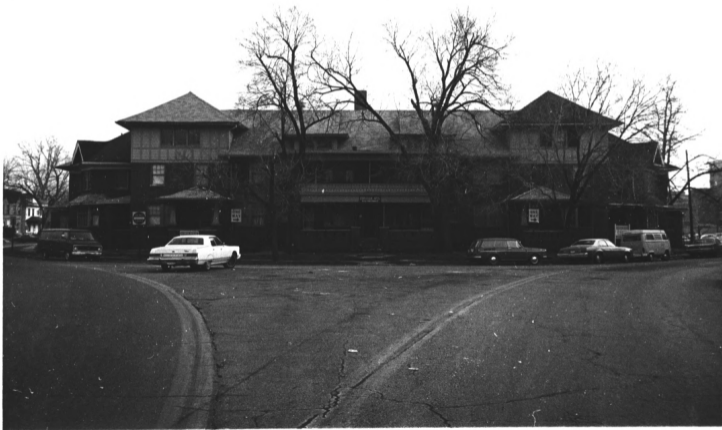
The Esplanade

3015 North Pennsylvania Street

Indianapolis, IN

Interior: Typical linen closet;  
Unit 4.

Photo: John Moyer, 1982.



The Esplanade Apartments

Indianapolis, Indiana

John Moyer 1982

View down Pennsylvania Street, camera :  
facing south

Photo #16 of 16