



SMITH FIELDS, ALLEN COUNTY, INDIANA #1



SMITH FIELD, ALLEN COUNTY, INDIANA *#2



SMITH FIELD, ALLEN COUNTY, INDIANA *3



SMITH FIELD, ALLEN COUNTY, INDIANA #4



SMITH FIELD, ALLEN COUNTY, INDIANA *5



SMITH FIELD, ALLEN COUNTY, INDIANA * 1/2



SMITH FIELD, ALLEN COUNTY, INDIANA #7



SMITH FIELD, ALLEN COUNTY, INDIANA

#8



SMITH FIELD, ALLEN COUNTY, INDIANA *9



SMITH FIELD, ALLEN COUNTY, INDIANA #10



SMITH FIELD, ALLEN COUNTY, INDIANA #11



ELEV. 834

SMITH FIELD, ALLEN COUNTY, INDIANA #12

ELEV. 834



SMITH FIELD, ALLEN COUNTY, INDIANA #13



SMITH FIELD, ALLEN COUNTY, INDIANA #14



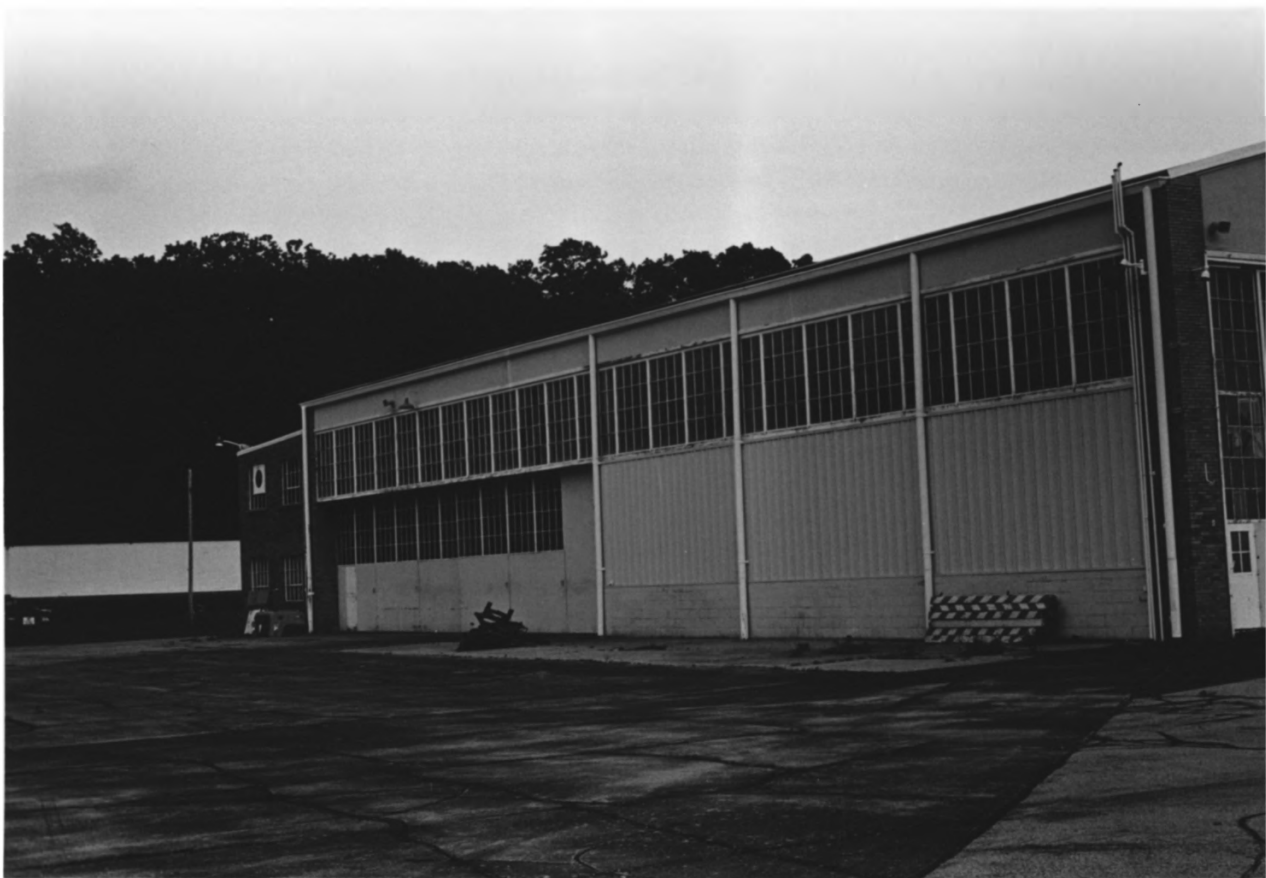
SMITH FIELD, ALLEN COUNTY, INDIANA #15



SMITH FIELD, ALLEN COUNTY, INDIANA #14



SMITH FIELD, ALLEN COUNTY, INDIANA *17



SMITH FIELD, ALLEN COUNTY, INDIANA #18



SMITH FIELD, ALLEN COUNTY, INDIANA #19



SMITH FIELD, ALLEN COUNTY, INDIANA #20



SMITH FIELD, ALLEN COUNTY, INDIANA #21



SMITH FIELD, ALLEN COUNTY, INDIANA #22



SMITH FIELD, ALLEN COUNTY, INDIANA #23



SMITH FIELD, ALLEN COUNTY, INDIANA #24



SMITH FIELD, ALLEN COUNTY, INDIANA *25



SMITH FIELD, ALLEN COUNTY, INDIANA #26



SMITH FIELD, ALLEN COUNTY, INDIANA #27



SMITH FIELD, ALLEN COUNTY, INDIANA #28



SMITH FIELD, ALLEN COUNTY, INDIANA #29



SMITH FIELD, ALLEN COUNTY, INDIANA #30



SMITH FIELD, ALLEN COUNTY, INDIANA *31



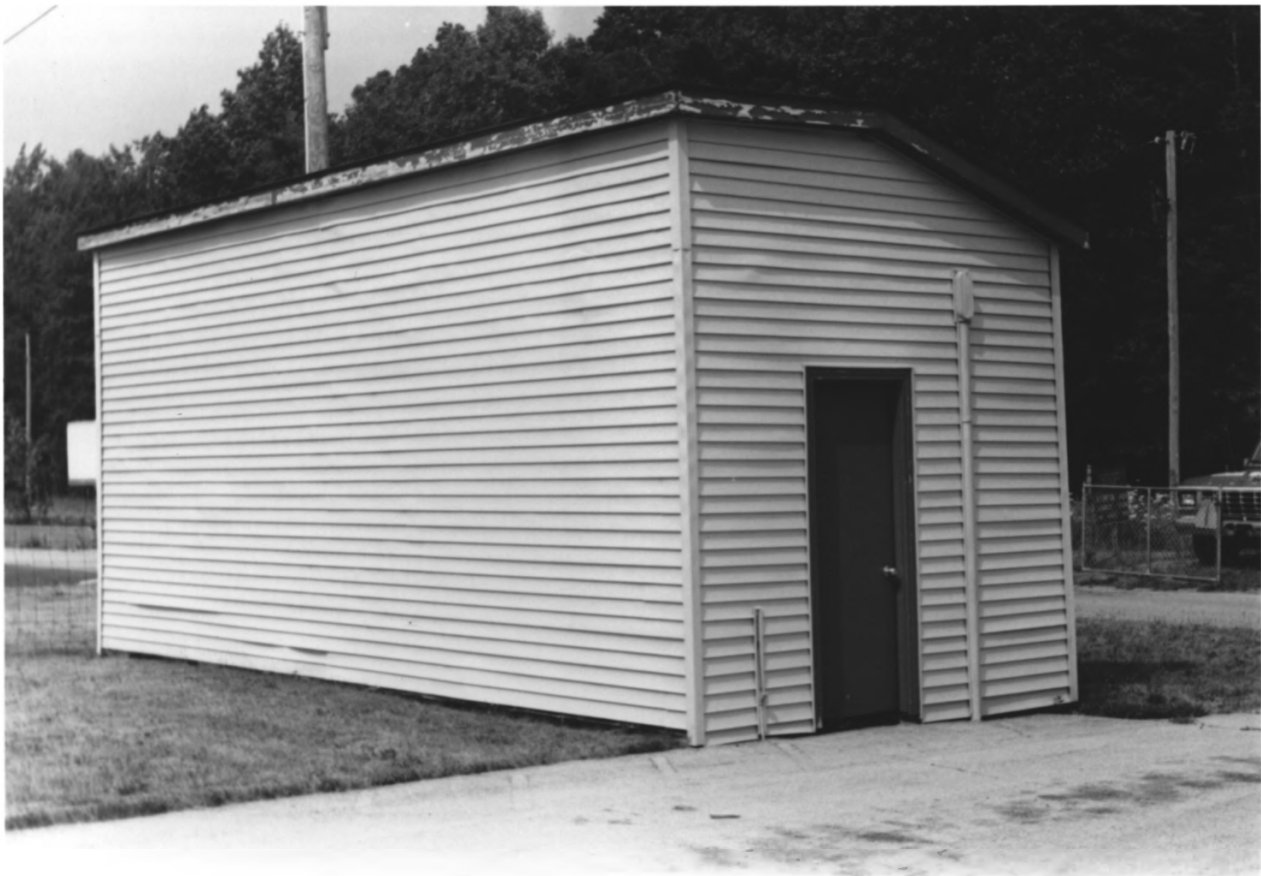
SMITH FIELD, ALLEN COUNTY, INDIANA #32



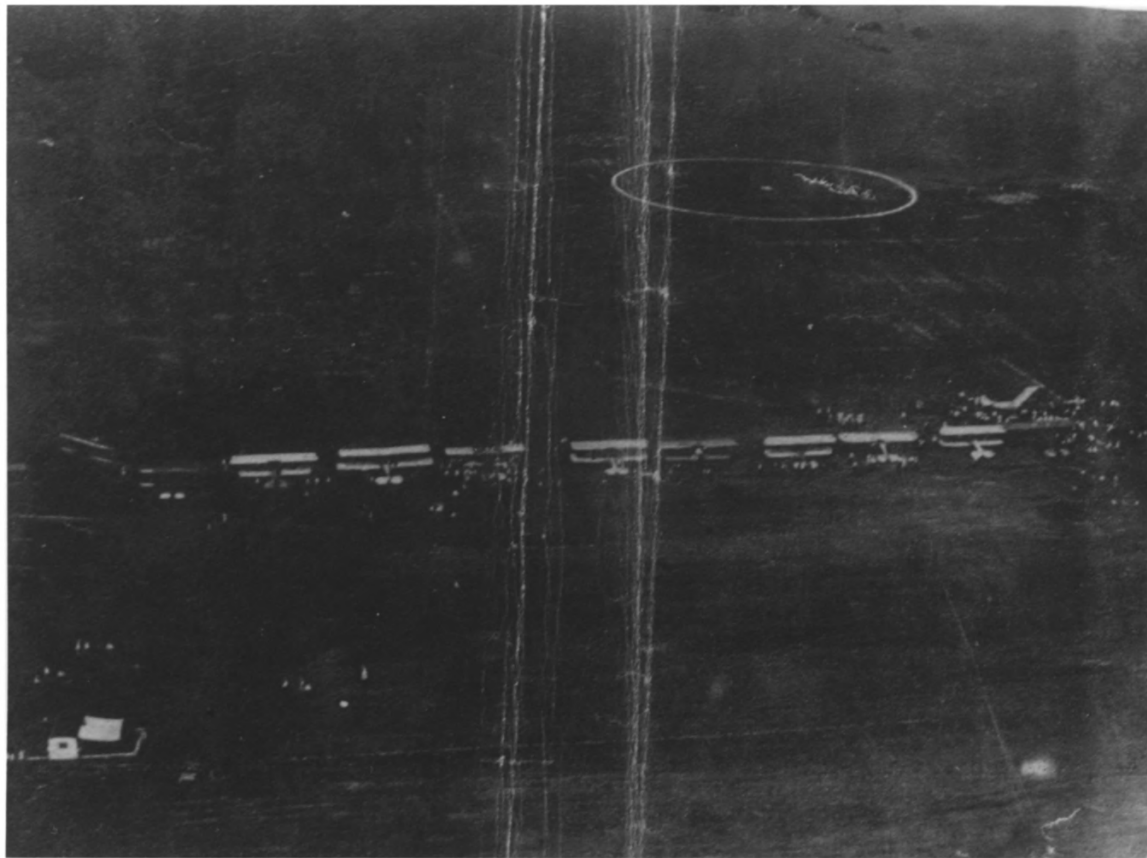
SMITH FIELD, ALLEN COUNTY, INDIANA #33



SMITH FIELD, ALLEN COUNTY, INDIANA #34



SMITH FIELD, ALLEN COUNTY, INDIANA #35



SMITH FIELD, ALLEN COUNTY, INDIANA #36



17

SMITH FIELD, ALLEN COUNTY, INDIANA #37



THE CROWD WAS THERE—This picture shows a group of the curious who hung around long after the shadows began to fall, feasting their eyes upon the giant birds of the sky which hold such fascination to the pavement wanderer.

SMITH FIELD, ALLEN COUNTY, INDIANA

#38

At 65 Miles per Hour

LANDING GEAR

MUST REST UPWARD THRUST OF
35000 LB. EQUIVALENT
2000 LB. PILE-DRIVER BLOW
on a BUMP LIKE THIS

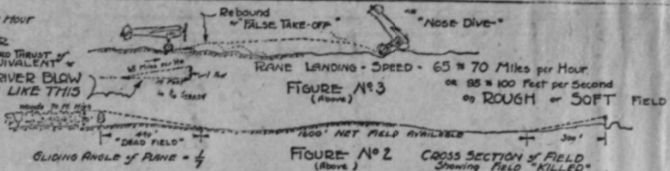


FIGURE No 3
(Above)

FIGURE No 2
(Above)

CROSS SECTION of FIELD
Showing FIELD "KILLED"
by OBSTRUCTIONS.

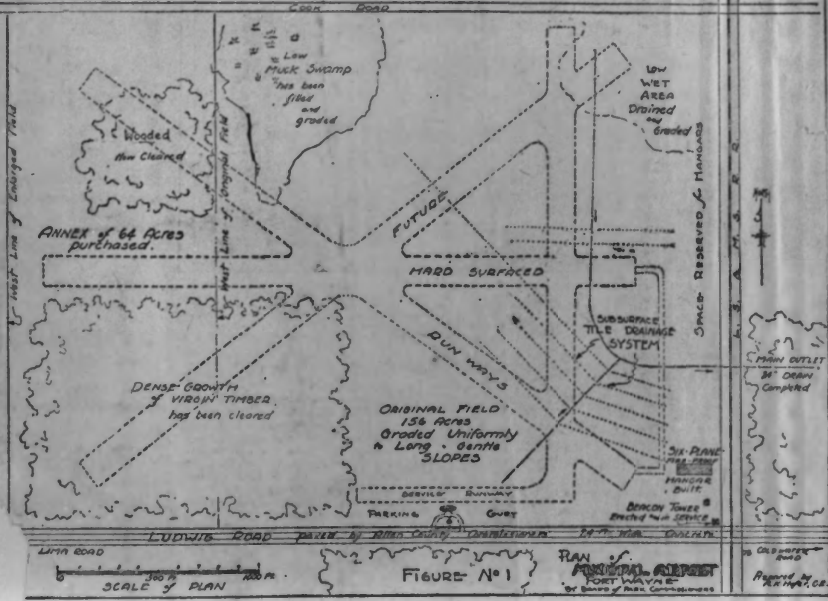


FIGURE No 1

PLAN of AIRPORT
FOOTWAYS
By Board of Public Commissioners

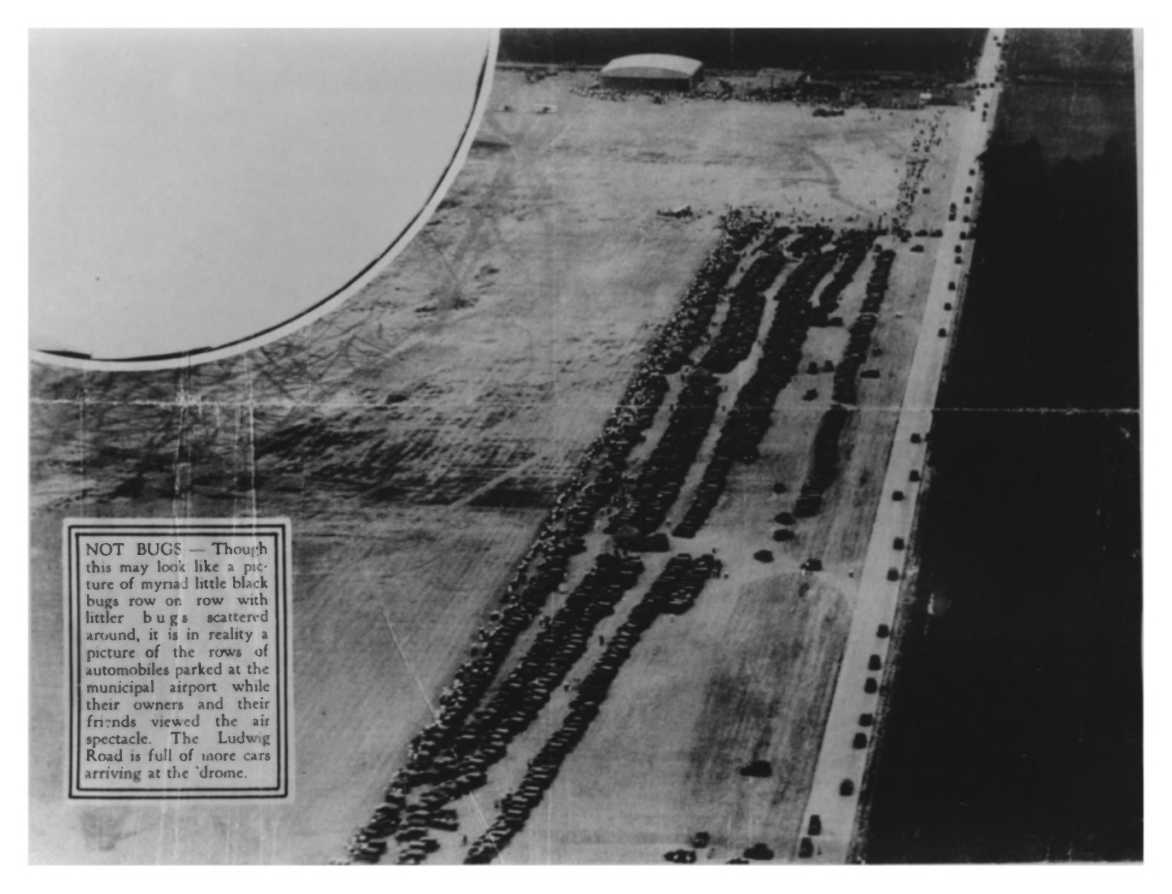
Approved by
R. N. HAYES, C.E.

SMITH FIELD, ALLEN COUNTY, INDIANA #39



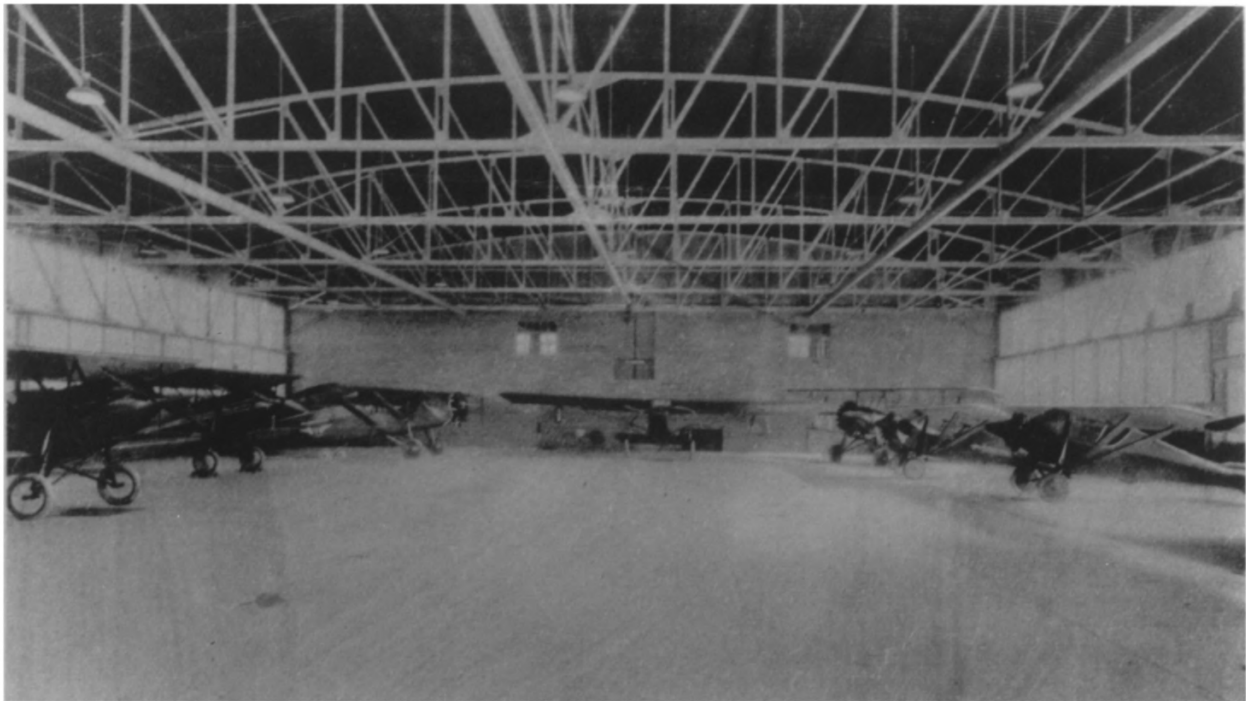
SMITH FIELD, ALLEN COUNTY, INDIANA

#40

An aerial, black and white photograph of a large parking lot. The lot is filled with rows of cars, which appear as small dark shapes from this high angle. The cars are organized into several long, parallel lines. In the upper left corner, a large, light-colored, curved structure, likely the nose or tail of an airplane, is partially visible. The ground is a mix of dirt and paved areas. The overall scene depicts a busy parking area at an airport.

NOT BUGS — Though this may look like a picture of myriad little black bugs row on row with littler bugs scattered around, it is in reality a picture of the rows of automobiles parked at the municipal airport while their owners and their friends viewed the air spectacle. The Ludwig Road is full of more cars arriving at the 'drome.

SMITH FIELD, ALLEN COUNTY, INDIANA #41

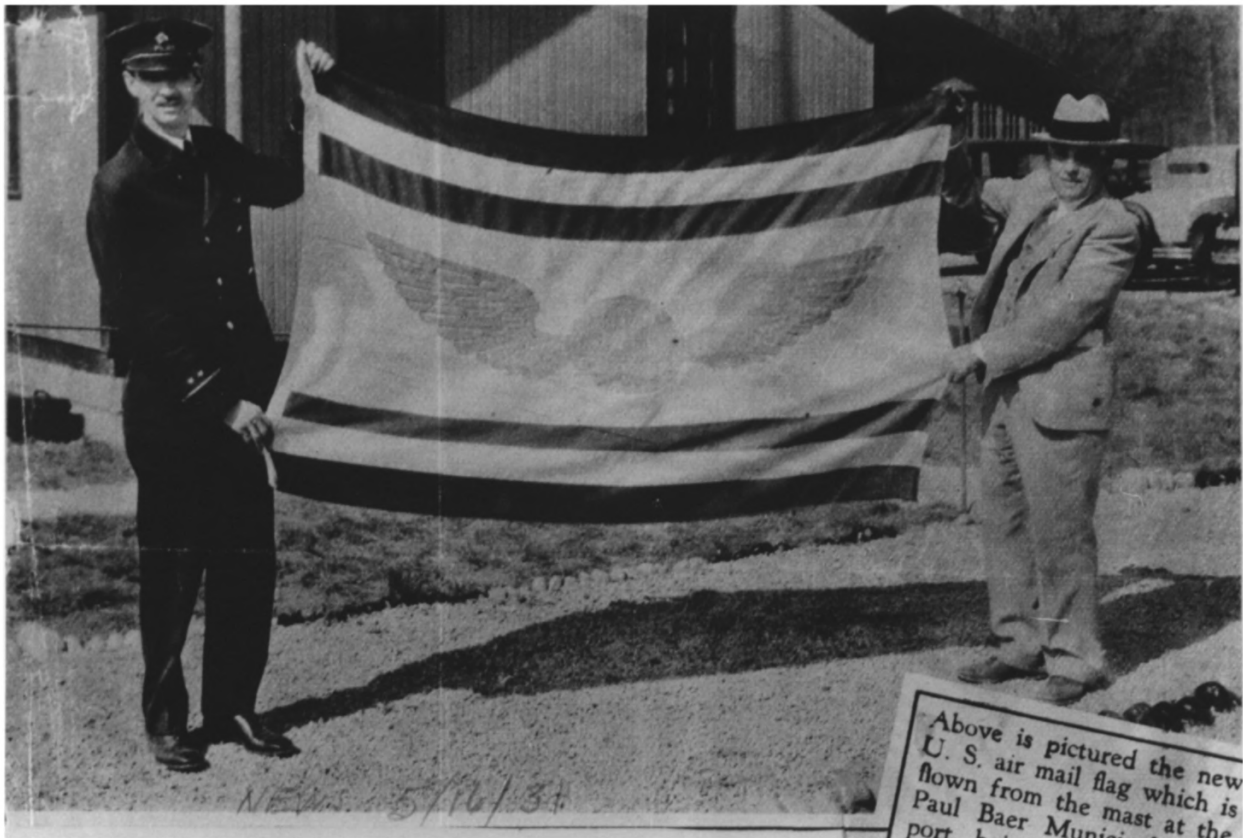


SMITH FIELD, ALLEN COUNTY, INDIANA

#42



SMITH FIELD, ALLEN COUNTY, INDIANA #43



Above is pictured the new
U. S. air mail flag which is
flown from the mast at the
port of Paul Baer Municipi...

NEWS 5/16/34

SMITH FIELD, ALLEN COUNTY, INDIANA #44



SMITH FIELD, ALLEN COUNTY, INDIANA #45

APR-4-1931 - NEWS



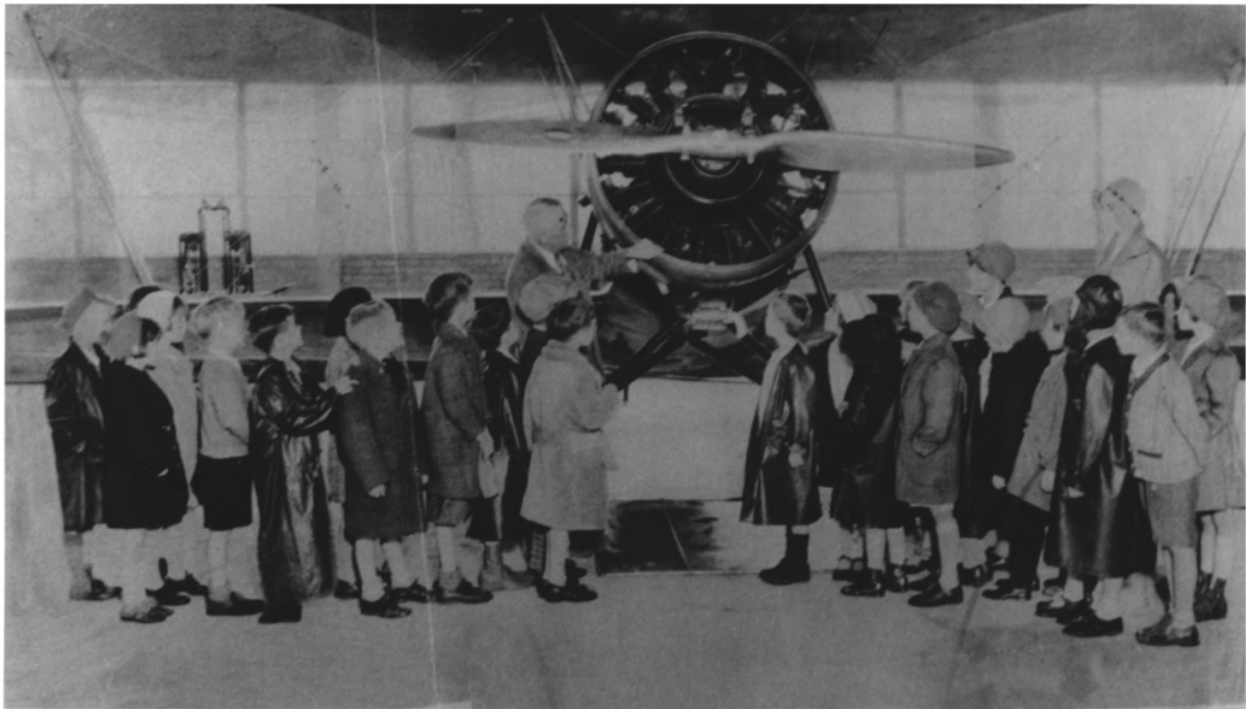
THE BOYS OF THE FORT WAYNE MODEL AIRPLANE LEAGUE,

Who Were Taken on an Educational Tour at the Paul Baer Municipal Airport Recently, Are Pictured Above. Officials Who Conducted the Tour Can Be Seen the Right of the Photo. They Are, Left to Right: Capt. Robert R. Bartel, Lieut. George Hill, John S. Slater, Pilot Harold Preston, E. K. Ackerman, K. W. Winger and Stanley Gunther—Staff Photo.



SMITH FIELD, ALLEN COUNTY, INDIANA

#46



SMITH FIELD, ALLEN COUNTY, INDIANA

#47

NEWS 5/16/31

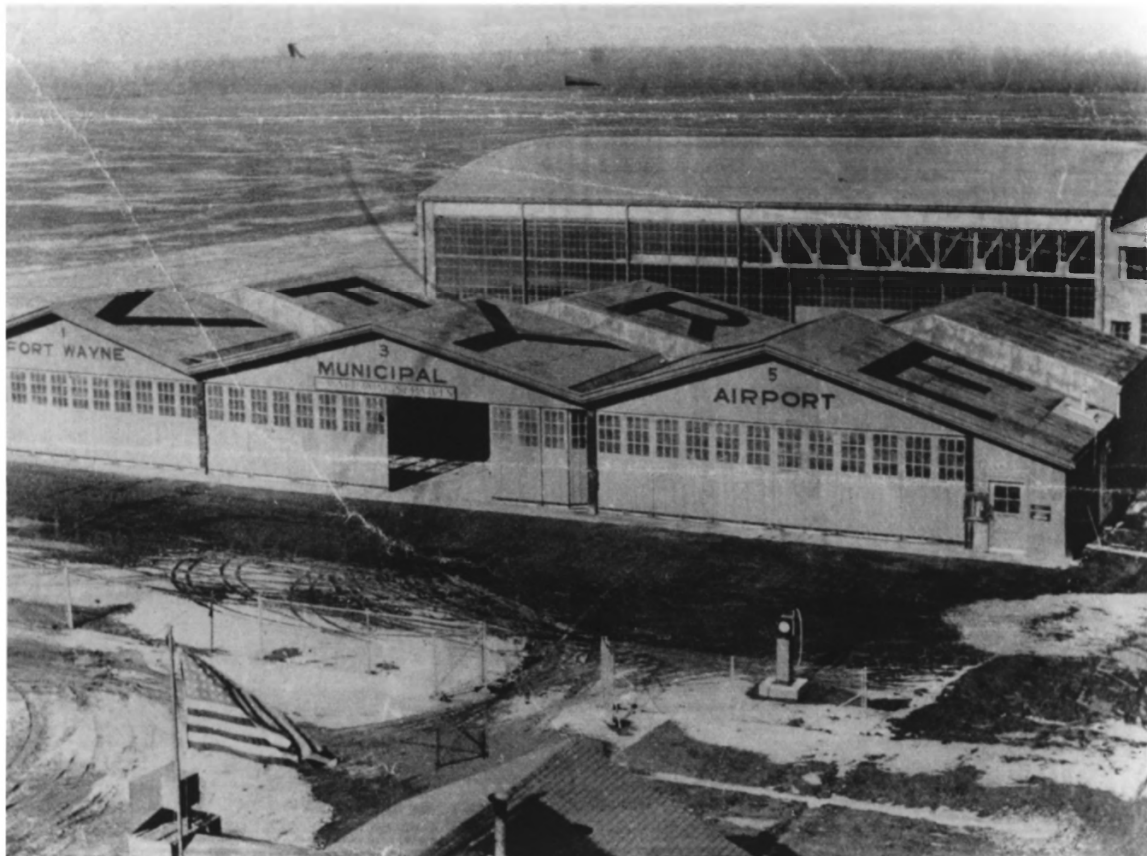


SMITH FIELD, ALLEN COUNTY, INDIANA #48



SMITH FIELD, ALLEN COUNTY, INDIANA

#49



SMITH FIELD, ALLEN COUNTY, INDIANA *50

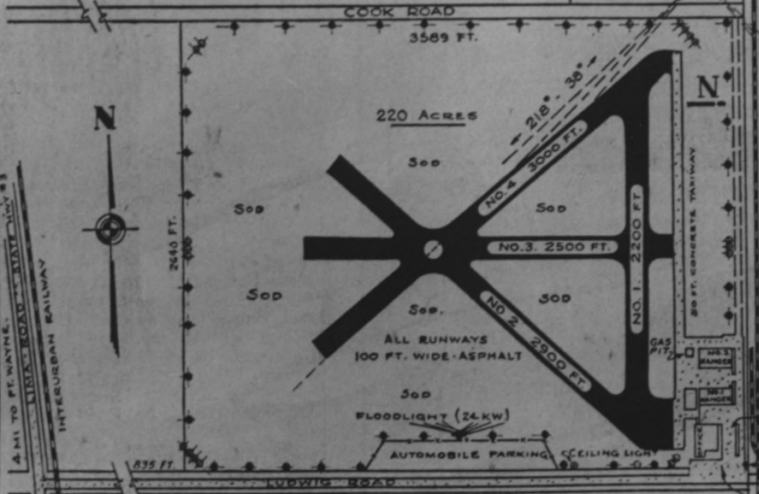
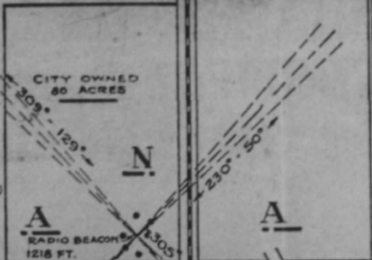


SMITH FIELD, ALLEN COUNTY, INDIANA *51

364 A
 REVISED 11-25-36.
FORT WAYNE

MUNICIPAL AIRPORT
 FORT WAYNE, INO.

CART. C. F. CORNISH FIELD MANAGER.



- FACILITIES**
- ELECTRIC BOUNDARY LIGHTS
 - ELECTRIC RANGE LIGHTS
 - REVOLVING BEACON
 - FLOOD LIGHTS
 - RADIO PHONE WAJZ 218
 - RADIO BEACON, F.W. "
 - HARD SURFACED RUNWAYS
 - HEAVED HANGERS
 - MODERN OFFICES
 - GOVT. APPROVED REPAIR STATION
 - PAVED PARKING AREA.
 - RESTAURANT
 - SLEEPING QUARTERS
 - JANITARY REST ROOMS
 - WEATHER SERVICE.
 - GAS & OIL SERVICE
 - TRAINED PERSONNEL
 DAY & NIGHT
 - 10 MINUTES TO CITY
 - AUTO GAS.
 - 24" REVOLVING BEACON
 & GREEN FLASHER
 4265 FT.

4 MI. TO FT. WAYNE.
 AIRCRAFT ROAD STATE HIGHWAY 83
 INTERURBAN RAILWAY

5 MI. TO FT. WAYNE
 COLUMBIAN ROAD

● BOUNDARY LIGHTS ○ RANGE LIGHTS

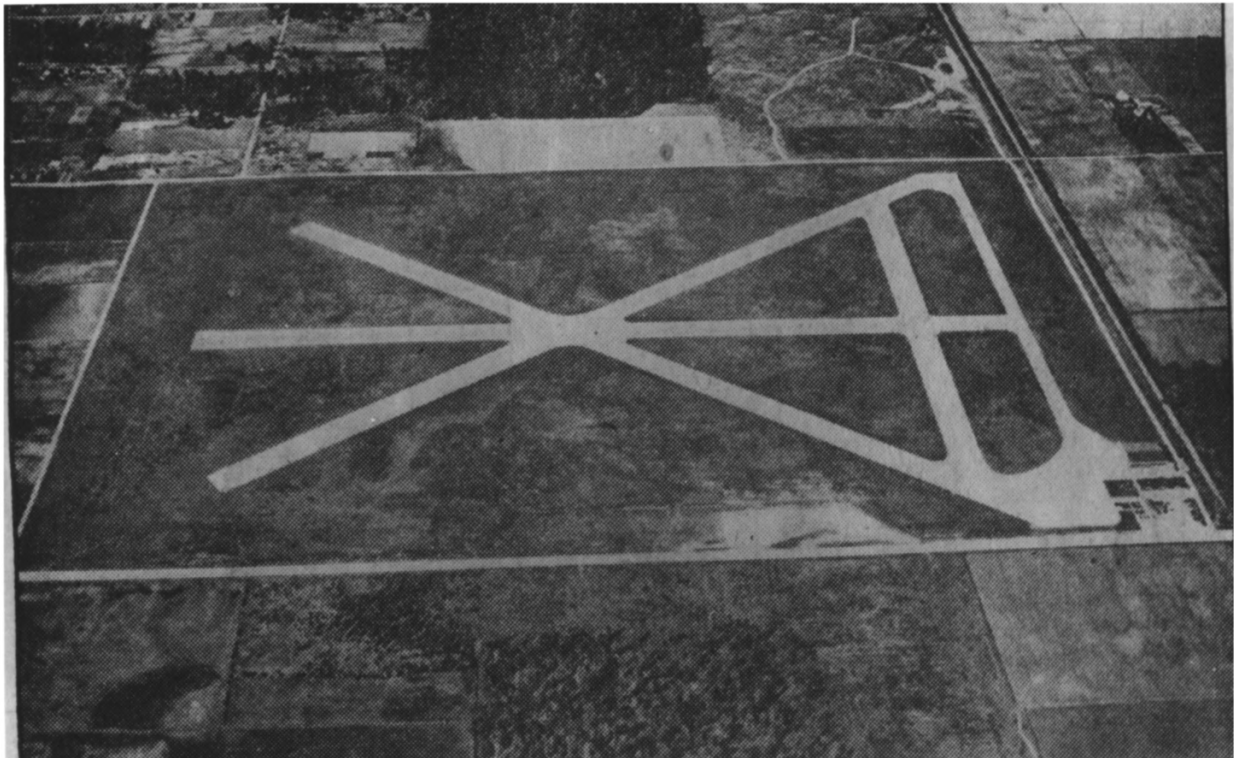
NOTE 1: RADIO BEACON OPERATES UPON REQUEST ONLY

PAVED PARKING AREA

SMITH FIELD, ALLEN COUNTY, INDIANNA #52



SMITH FIELD, HULLEN COUNTY, INDIANA *53

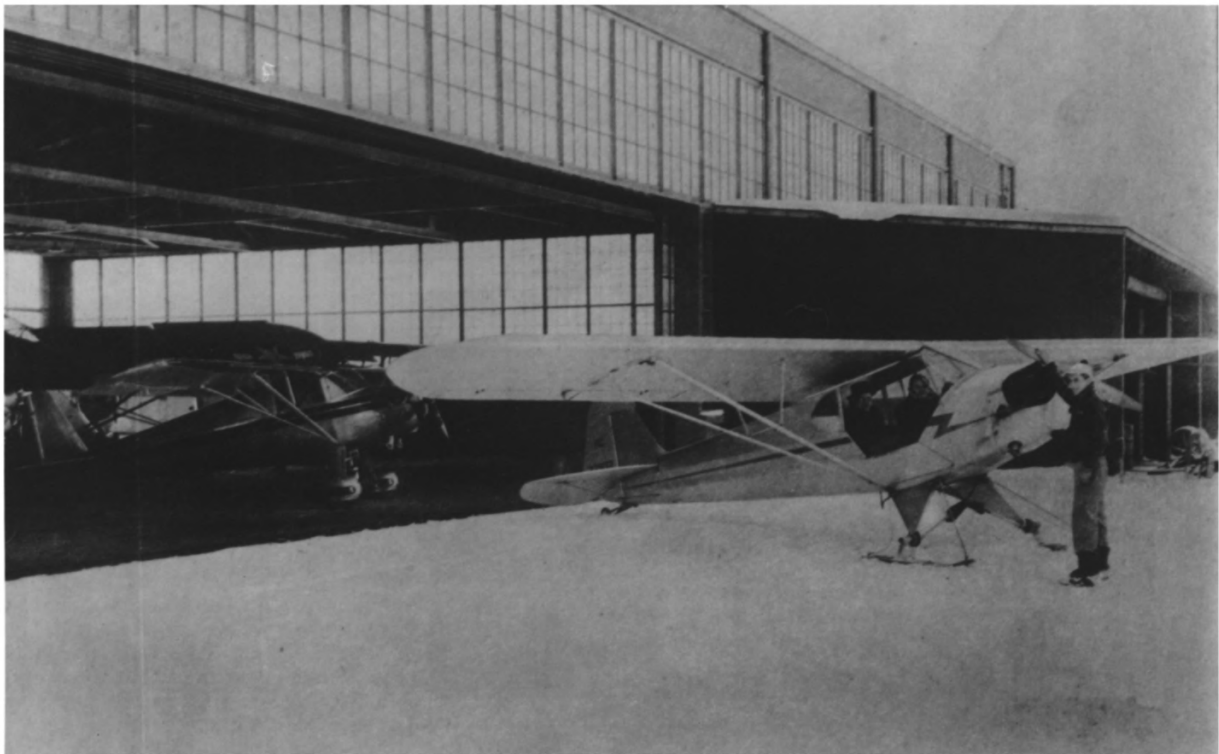


SMITH FIELD, ALLEN COUNTY, INDIANA #54

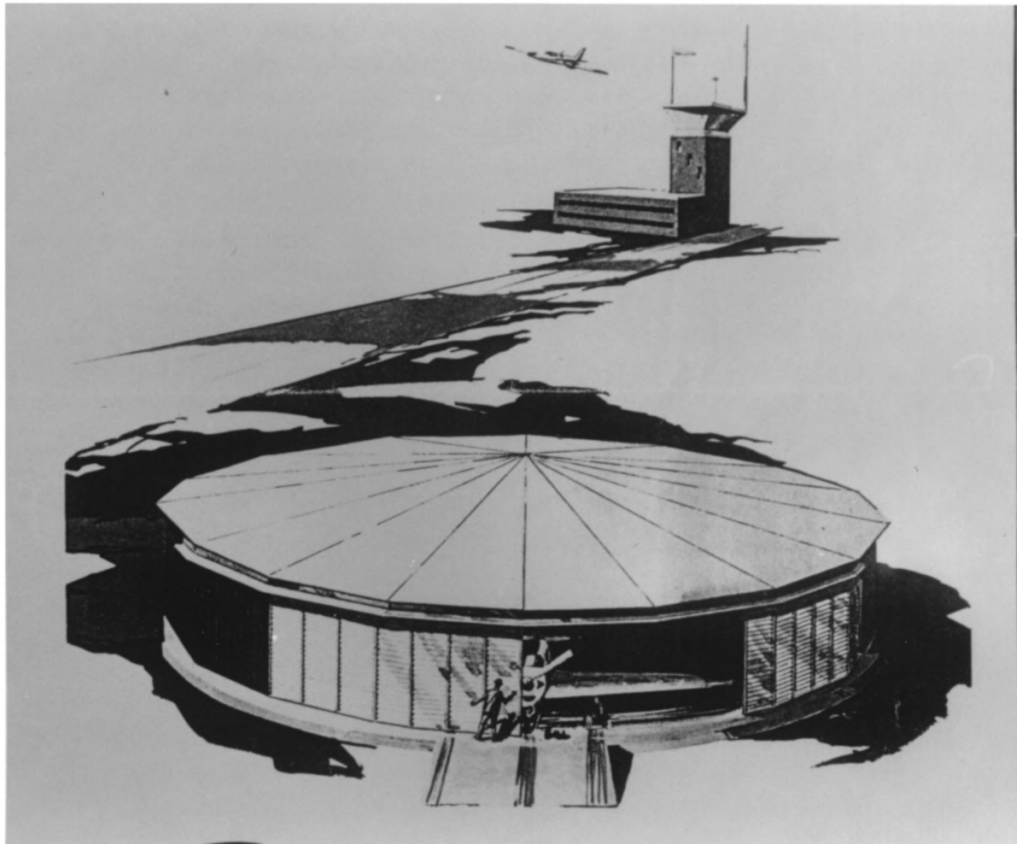


With a little tilting,
the hangar accommodates
many private
planes.

SMITH FIELD, ALLEN COUNTY, INDIANNA *556



SMITH FIELD, ALLEN COUNTY, INDIANA *56



SMITH FIELD, ALLEN COUNTY, INDIANA #57