



CENTRAL Walgreen AGENCY DRUGS

Walgreen DRUGS AGENCY



Albert Lea Commercial Historic  
District (Streetscape)

Albert Lea, Minnesota

Susan Roth

September 1986

Minnesota Historical Society,  
690 Cedar St., St. Paul, 55101

Looking south along west

Broadway between William  
and Main

08823/2



Albert Lea Commercial Historic  
District (Streetscape)

Albert Lea, Minnesota

Susan Roth

September 1986

Minnesota Historical Society,  
690 Cedar St., St. Paul, 55101

Looking north along east side  
Broadway between William  
and Clark

08823/10



Radio Shack

TRADES OFFICE PRODUCTS

SPORTS-WEAR STORE

THE OFFICE

LUXE MAN  
GIVE AWAY

Paul Grawe  
The Original

Albert Lea Commercial Historic  
District (Streetscape)

Albert Lea, Minnesota

Susan Roth

September 1986

Minnesota Historical Society,  
690 Cedar St., St. Paul, 55101

Looking south along west  
Broadway between Clark  
and William

08823/19



Albert Lea Commercial Historic  
District (Streetscape)

Albert Lea, Minnesota

Susan Roth

September 1986

Minnesota Historical Society,  
690 Cedar St., St. Paul, 55101

Looking south along east side  
of Broadway between Clark  
and William

08823/6





Albert Lea Commercial Historic  
District (Streetscape)

Albert Lea, Minnesota

Susan Roth

September 1986

Minnesota Historical Society,  
690 Cedar St., St. Paul, 55101

Looking south along east

Broadway between Fountain  
and Water

08823/5



Albert Lea Commercial Historic  
District (Streetscape)

Albert Lea, Minnesota

Susan Roth

September 1986

Minnesota Historical Society,  
690 Cedar St., St. Paul, 55101

Looking south along east side  
of Broadway between William  
and Main

08823/8



Paul  
Clothiers

WISBARD

Computer Center

DRUGS

Bill's Wash & Dry

NORTH  
13  
←

NORTH  
65  
→

TO  
35 90  
→

Albert Lea Commercial Historic  
District (Streetscape)

Albert Lea, Minnesota

Norene Roberts

January 1986

Minnesota Historical Society,  
690 Cedar St., St. Paul, 55101

Looking north along west side  
Broadway between Main and  
William

08290/17



ble Bool Store

Radio Shack

LEE  
WAGNICH

Tiger City Sports

Louthold's

THE OTHER

Albert Lea Commercial Historic  
District (Streetscape)

Albert Lea, Minnesota

Norene Roberts

January 1986

Minnesota Historical Society,  
690 Cedar St., St. Paul, 55101

Looking north along west

Broadway between William and  
Clark

08290/13





Gumbles

COAST TO COAST STORES



UNIQUE

Albert Lea Commercial Historic  
District (Streetscape)

Albert Lea, Minnesota

Norene Roberts

January 1986

Minnesota Historical Society,  
690 Cedar St., St. Paul, 55101

Looking northwest at northside  
of West Clark

08290/4



Albert Lea Commercial Historic  
District (Streetscape)

Albert Lea, Minnesota

Norene Roberts

January 1986

Minnesota Historical Society,  
690 Cedar St., St. Paul, 55101

Looking north along west side of  
Broadway between Clark and  
Water

08290/3



Albert Lea Commercial Historic  
District (Streetscape)

Albert Lea, Minnesota

Norene Roberts

January 1986

Minnesota Historical Society,  
690 Cedar St., St. Paul, 55101

Looking north along east side of  
Broadway between Clark and  
Water

08290/5



Albert Lea Commercial Historic  
District (Wedge-Jones Building/  
Lembke Department Store)

Albert Lea, Minnesota

Susan Roth

September 1986

Minnesota Historical Society,  
690 Cedar St., St. Paul, 55101

Streetscape-looking southwest  
along west side Broadway  
south of Main.

08823/12





Bible Book Store

Bible Book Store

Radio Shack

WORLD OF BOOKS

Tiger City Sports

Painting Pros

Albert Lea Commercial Historic  
District (Woolworth Building  
(NON-CONTRIBUTING) 135-148  
South Broadway #30)

Albert Lea, Minnesota

Susan Roth

September 1986

Minnesota Historical Society,  
690 Cedar St., St. Paul, 55101

Looking northwest

08823/3



Forsberg SHOES PLYMOUTH

Forsberg SHOES PLYMOUTH

3

HARBET BATER  
AUTO-LIFE  
& FIRE-HEALTH

HARBET BATER  
AUTO-LIFE  
& FIRE-HEALTH

HARBET BATER  
AUTO-LIFE  
& FIRE-HEALTH

RENTAL

Albert Lea Commercial Historic  
District (First National  
Bank, 139 South Broadway #23)

Albert Lea, Minnesota

Norene Roberts

October 1985

Minnesota Historical Society,  
690 Cedar St., St. Paul, 55101

Looking northeast

08225/4



INTERSTATE POWER COMPANY



Albert Lea Commercial Historic  
District (Southern Minnesota  
Gas and Electric Company,  
100 North Broadway #5)

Albert Lea, Minnesota

Norene Roberts

July 1984

Minnesota Historical Society,  
690 Cedar St., St. Paul, 55101

Looking northwest

07052/13



ports

2

MENS

Leuthold's

LADIES

THE OTHER Music Store

Leuthold's Anniversary Sale

OPEN 10:00 AM - 6:00 PM

Albert Lea Commercial Historic  
District (Armstrong Block  
118-126 South Broadway #27)

Albert Lea, Minnesota

Norene Roberts

October 1985

Minnesota Historical Society,  
690 Cedar St., St. Paul, 55101

Looking west

08220/20





Benson's



MEDICAL  
ARTS

DENTIST

2

Albert Lea Commercial Historic  
District (Henry J. Harm  
Jewelry Store, 211 South  
Broadway #32)

Albert Lea, Minnesota

Norene Roberts

July 1984

Minnesota Historical Society,  
690 Cedar St., St. Paul, 55101

Looking east

07046/2



HERBERGERS

NORTH NORTH  
13 65  
← →

TO  
39 98  
→

SORENSEN APPL & TV

SORENSEN APPL & TV

NEPTUNES  
PET SHOP



Albert Lea Commercial Historic  
District (Left: Skinner-  
Chamberline Store, 223-241  
South Broadway #35; Right:  
Upin Building, 243-245 South  
Broadway (NON-CONTRIBUTING)  
#36 )

Albert Lea, Minnesota

Norene Roberts

July 1984

Minnesota Historical Society,

690 Cedar St., St. Paul, 55101

Looking northeast

07046/6



Minnesota  
Festival  
Theatre

No Right Turn

Albert Lea Commercial Historic  
District (Fireman's Hall and  
Masonic Lodge, 143-147 North  
Broadway #6)

Albert Lea, Minnesota

Norene Roberts

July 1984

Minnesota Historical Society,  
690 Cedar St., St. Paul, 55101

Looking southwest

07052/6



Albert Lea Commercial Historic  
District (Beatrice Bessesen  
Theatre Building, 220-222  
South Broadway #42)

Albert Lea, Minnesota

Norene Roberts

July 1984

Minnesota Historical Society,  
690 Cedar St., St. Paul, 55101

Looking west

07046/3





Albert Lea Commercial Historic  
District (Albert Lea City Hall  
(1903), 202 North Broadway #2)

Albert Lea, Minnesota

Norene Roberts

July 1984

Minnesota Historical Society,  
690 Cedar St., St. Paul, 55101

Looking east

07052/8



Albert Lea Commercial Historic  
District (Albert Lea State  
Bank, 201-203 South Broadway  
#31)

Albert Lea, Minnesota

Norene Roberts

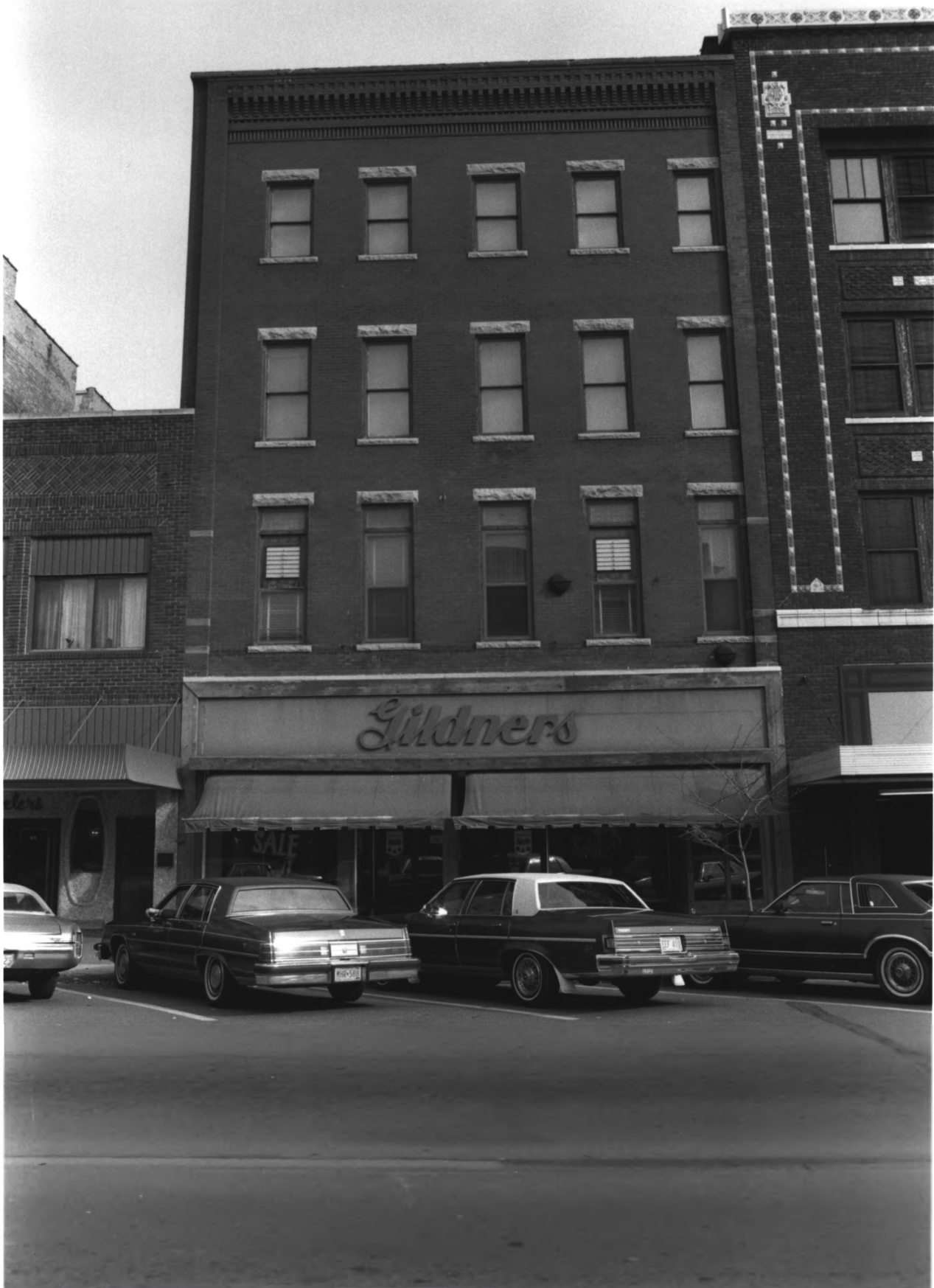
October 1985

Minnesota Historical Society,

690 Cedar St., St. Paul, 55101

Looking southeast

08223/8



*Giddners*

SALE

Albert Lea Commercial Historic  
District (North Annex to  
Skinner-Chamberlin Store,  
219 South Broadway #34)

Albert Lea, Minnesota

Norene Roberts

October 1985

Minnesota Historical Society,  
690 Cedar St., St. Paul, 55101

Looking east

08223/5



UNIQUE

MERRILL'S  
POP  
CORN

BIBLE HOUSE

NO  
LEFT  
TURN

Albert Lea Commercial Historic  
District (Dry goods and  
grocery store, 101 North  
Broadway #12)

Albert Lea, Minnesota

Norene Roberts

July 1984

Minnesota Historical Society,  
690 Cedar St., St. Paul, 55101

Looking northwest

07052/12





Albert Lea Commercial Historic  
District (Wedge-Spicer Drug  
Store, 104 South Broadway  
#24)

Albert Lea, Minnesota

Norene Roberts

July 1984

Minnesota Historical Society,  
690 Cedar St., St. Paul, 55101

Looking southwest

07052/14



HERBERGERS

NORTH 13  
←

NORTH 65  
→

TO

35 90  
→

13 55

S

Albert Lea Commercial Historic  
District (Streetscape)

Albert Lea, Minnesota

Norene Roberts

January 1986

Minnesota Historical Society,  
690 Cedar St., St. Paul, 55101

Looking north along east side  
of Broadway between Main and  
William

08290/16



Shoes

ANDERSENS FA

BY PAIR  
REGULAR PRICE  
29 PAIR  
OR SALE  
ONLY

2 HOUR  
NO PARKING  
EXCEPT  
FOR  
LOADING  
UNLOADING  
OR  
DELIVERY

Albert Lea Commercial Historic  
District (Commercial  
Building, 238 South Broadway  
#45)

Albert Lea, Minnesota

Norene Roberts

July 1984

Minnesota Historical Society,  
690 Cedar St., St. Paul, 55101

Looking west

07046/4



Albert Lea Commercial Historic  
District (Commercial Building,  
216-218 South Broadway #41)

Albert Lea, Minnesota

Norene Roberts

October 1985

Minnesota Historical Society,  
690 Cedar St., St. Paul, 55101

Looking west

08223/12





ON'S

2 HOUR PARKING  
11:00 AM - 5:00 PM

Andersens  
Hallmark

5 MINUTE PHOTO DEVELOPING

Kelly's

Albert Lea Commercial Historic  
District (Harness Shop, 214  
South Broadway, #41)

Albert Lea, Minnesota

Norene Roberts

October 1985

Minnesota Historical Society,  
690 Cedar St., St. Paul, 55101

Looking west

08223/11

THE OTHER *Music* STORE

KOPET MUSIC

 **ound-A-Round**

... PRODUCTS



Albert Lea Commercial Historic  
District (Commercial Building,  
112-114 South Broadway #26)

Albert Lea, Minnesota

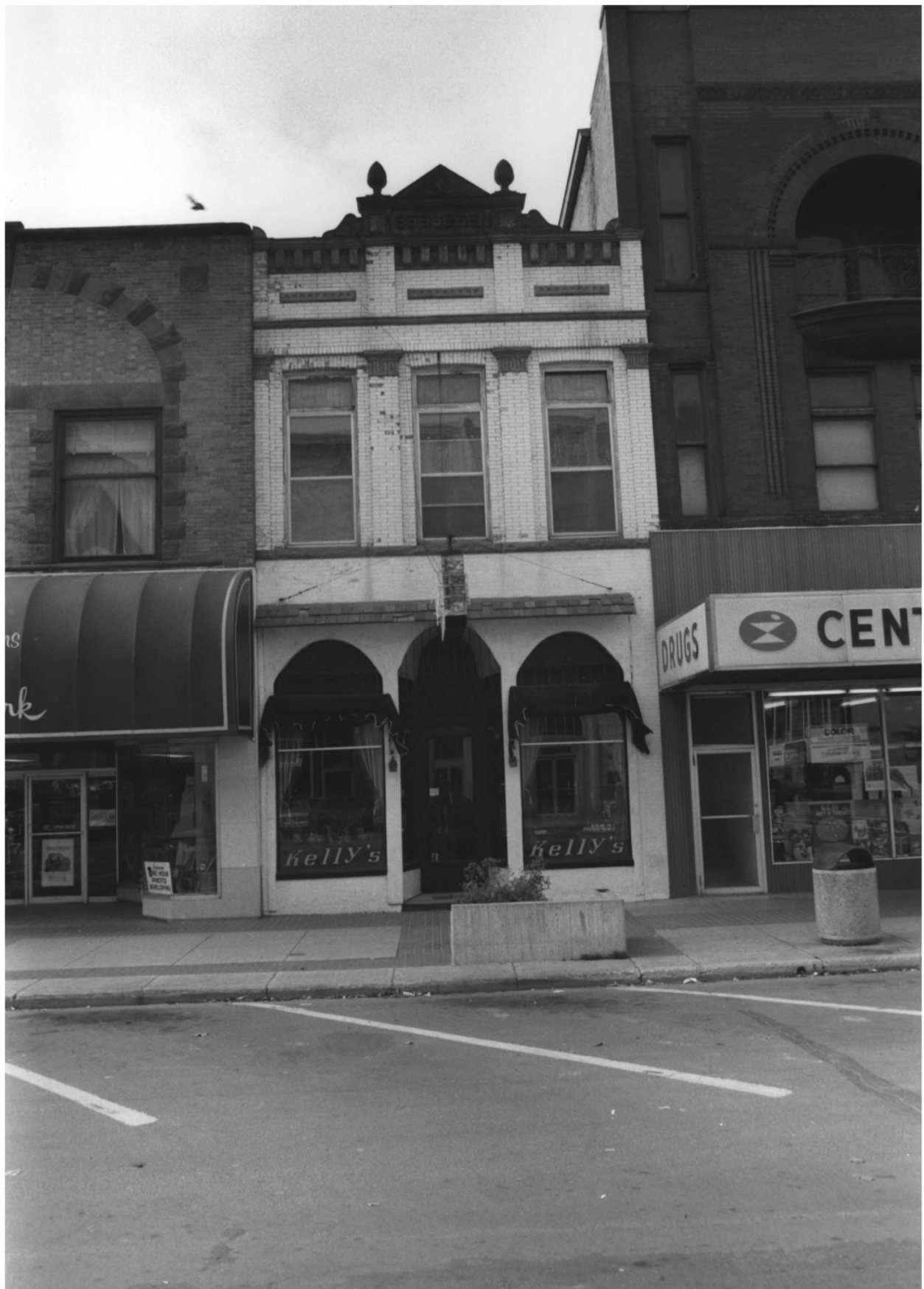
Norene Roberts

October 1985

Minnesota Historical Society,  
690 Cedar St., St. Paul, 55101

Looking west

08220/19



Albert Lea Commercial Historic  
District (Bessesen Building,  
208 South Broadway #39)

Albert Lea, Minnesota

Norene Roberts

October 1985

Minnesota Historical Society,  
690 Cedar St., St. Paul, 55101

Looking West

08223/10



*Courty Manor*

*Bridals / Studio / Uniforms*



NO PARKING  
EXCEPT  
2 HR. MAX.  
10:00 AM TO 6:00 PM  
MON-FRI

\$79.95  
FOR THE  
7TH ANNIVERSARY  
SALE

UNIFORM  
shop  
UPSTAIRS

EYC 865

GIRTHRIGHT

Albert Lea Commercial Historic  
District (Butcher Shop, 137  
South Broadway #22)

Albert Lea, Minnesota

Norene Roberts

January 1986

Minnesota Historical Society,  
690 Cedar St., St. Paul, 55101

Looking east

08290/9



**hack**  
DEALER

RONICS

JOHNNY'S



*Tiger City Sports*

SPORTING GOODS

adidas



CSM 548



Albert Lea Commercial Historic  
District (Blackmer Building,  
128 South Broadway #23)

Albert Lea, Minnesota

Norene Roberts

October 1985

Minnesota Historical Society,  
690 Cedar St., St. Paul, 55101

Looking west

08225/1



LIVAN'S  
PRINT CO.

HAPPY HOUSE CANDIES

PLYMOUTH SHOES

HAMMER, DANIELSEN & WESTLAND  
CERTIFIED PUBLIC ACCOUNTANTS

1893

Albert Lea Commercial Historic  
District (Center Left: Bakery,  
127 South Broadway #19; Center  
Right: Boot and shoe store,  
129 South Broadway #20)

Albert Lea, Minnesota

Norene Roberts

July 1984

Minnesota Historical Society,  
690 Cedar St., St. Paul, 55101

Looking east

07052/15



NORTH  
MINNESOTA  
13  
←

NORTH  
65  
→

TO  
35 90  
→

H  
E  
R  
B  
E  
R  
G  
E  
R  
S

DRUG

Wick Oak Store

Herberg

Albert Lea Commercial Historic  
District (Streetscape)

Albert Lea, Minnesota

Norene Roberts

January 1986

Minnesota Historical Society,  
690 Cedar St., St. Paul, 55101

Looking north down center of  
Broadway between Main and  
William

08290/15