



NATIONAL HOTEL
PARKING

PUBLIC
PARKING

11
27

PEPPER

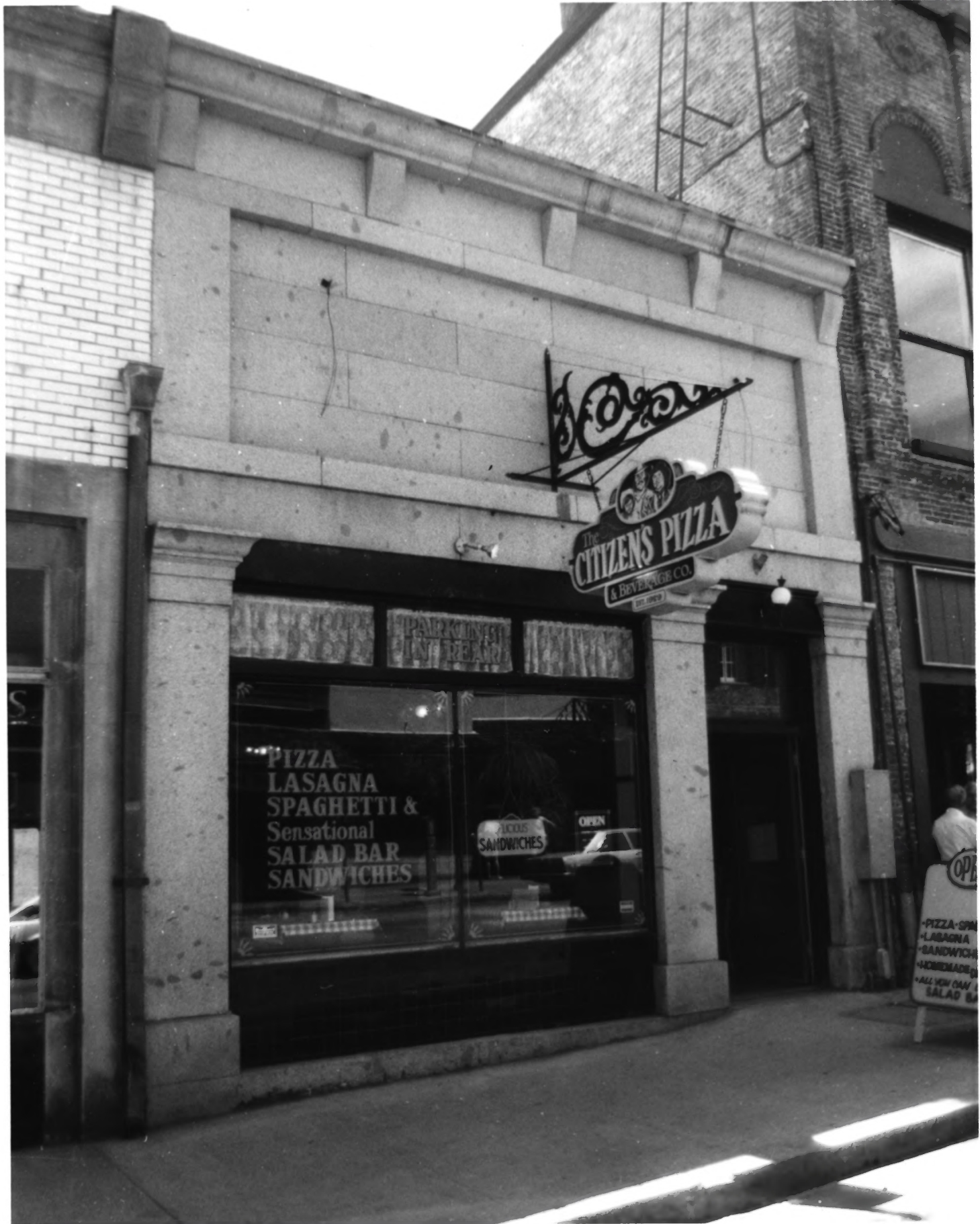
National Hotel 211 Broad St.
Nevada City, CA Downtown Hist. Dist.
Photo & Neg., Bob Wyckoff May, 1985
View facing southwest at corner of Broad St.
and National Alley
B-1

#1 of 62



Alpha Hardware 210 Broad St.
Newada City, CA Downtown Hist. Dist.
Photo & Neg., Bob Wyckoff May, 1985
View facing north
B-2

#2 of 62



Coca-Cola

The CITIZENS PIZZA
& BEVERAGE CO.
EST. 1927

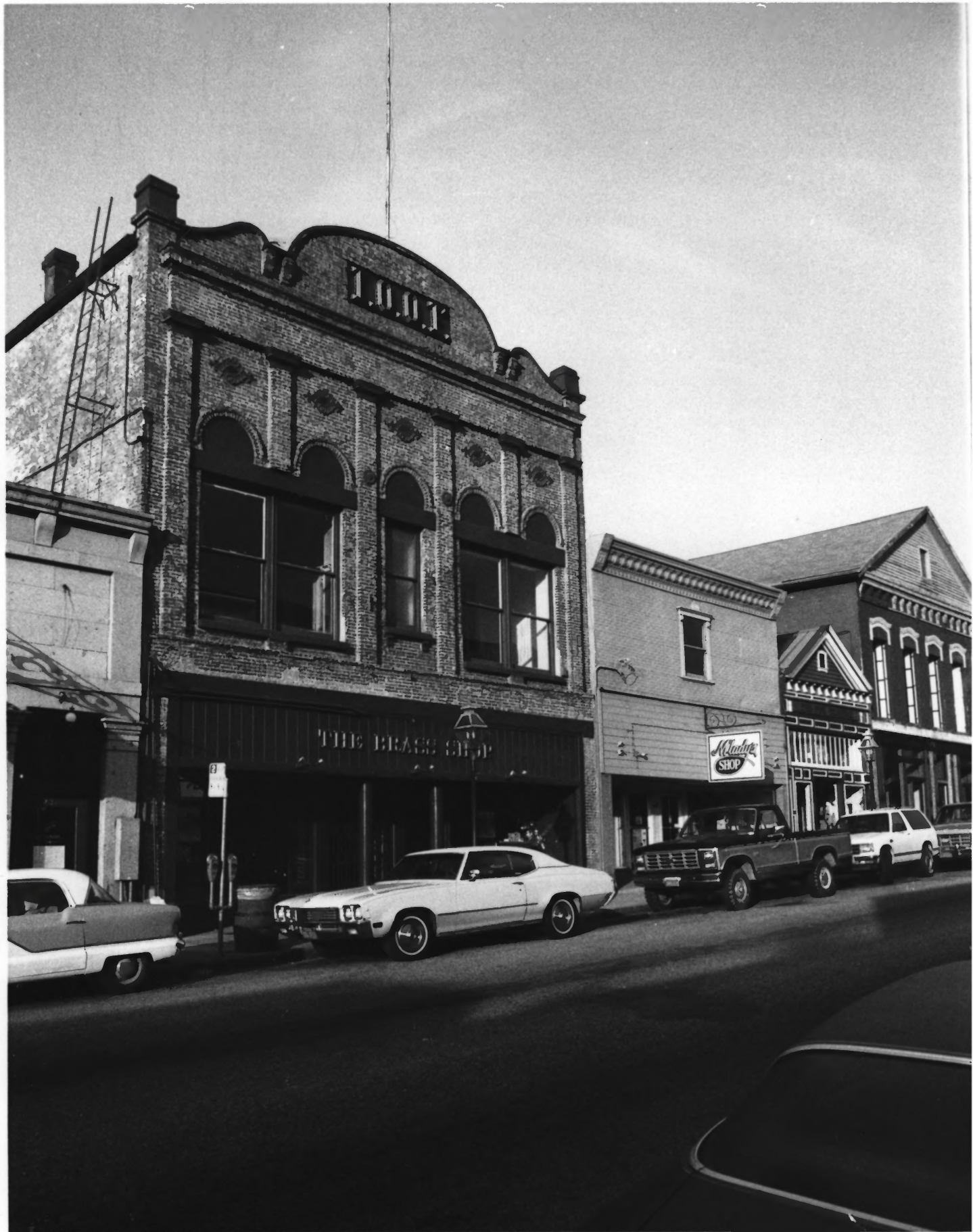
PIZZA
LASAGNA
SPAGHETTI &
Sensational
SALAD BAR
SANDWICHES

PIZZAS
SANDWICHES

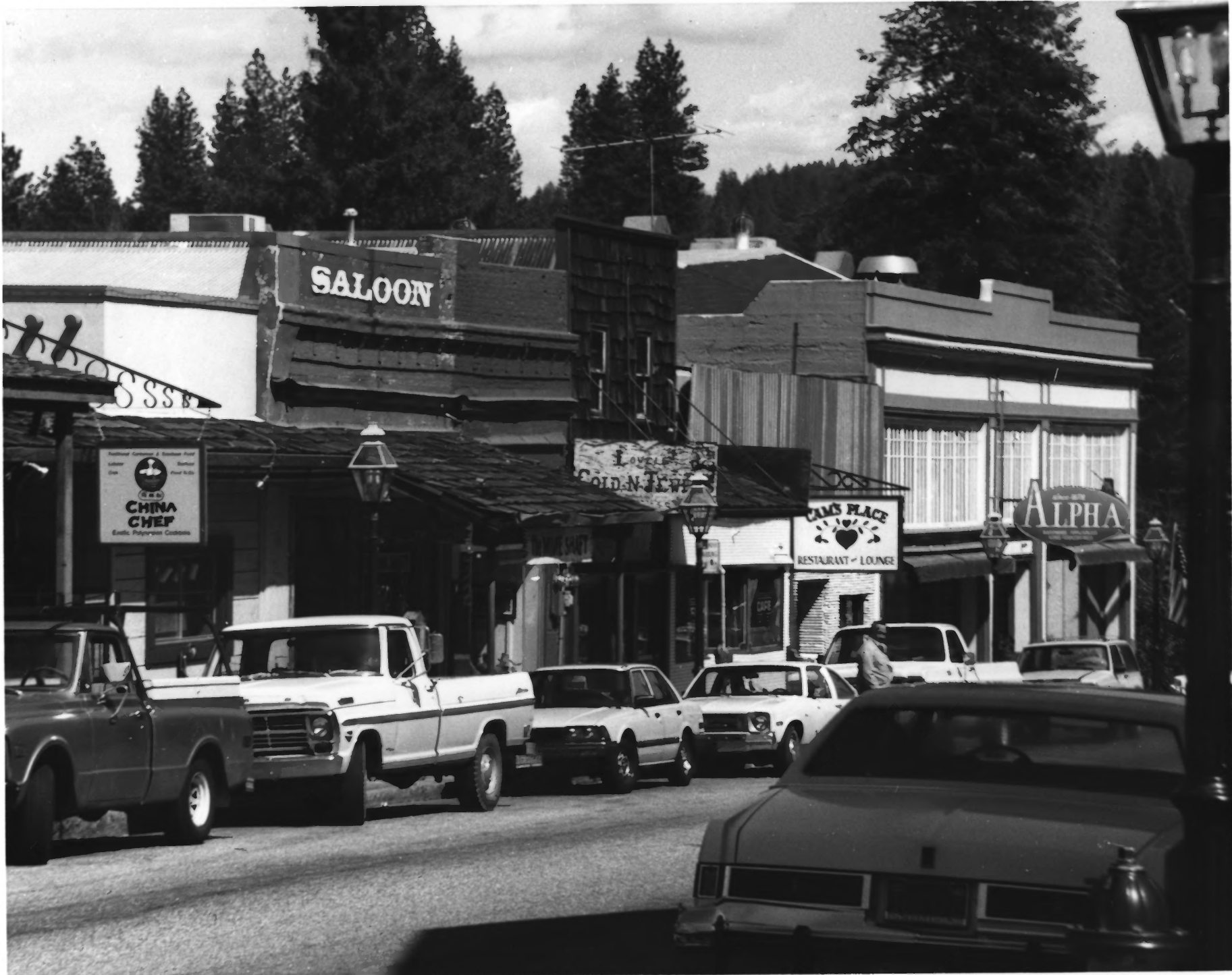
OPEN

OP
-PIZZA-SPIN
-LASAGNA
-SANDWICHES
-HOMEMADE
-ALL NEW CAV
-SALAD BAR

Citizen's Pizza 221 Broad St.
Nevada City, CA Downtown Hist. Dist.
Photo & Neg., Bob Wyckoff May, 1985
View from Broad St. facing south
B-5



200 Block of Broad St.
(left to right) I.O.O.F. Hall; M'Lady's;
Fur Traders #2; Eddy's
Nevada City, CA Downtown Hist. Dist.
Photo & Neg. Bob Wyckoff May, 1985
View facing southwest
B-7; B-9; B-11; B-13



SALOON

HOSS'S

Authentic Cantonese & Szechwan Food
Lunch Dinner
Dessert Fried Rolls
CHINA CHEF
Exotic Polynesian Cocktails

LOVE
GOLD-N-JEWEL

CAM'S PLACE
RESTAURANT - LOUNGE

ALPHA



200 Block of Broad St.
(left to right) China Chef; Mine Shaft;
Family Barber Shop; Lowell's Jewelry Store;
Cam's Place; Alpha Hardware
Nevada City, CA Downtown Hist. Dist.
Photo & Neg. Bob Wyckoff May, 1985
View facing northeast
B-12; B-10; B-8; B-6; B-4; B-2

5 of 62



Eddy's 233 Broad St.
Nevada City, CA Downtown Hist. Dist.
Photo & Neg., Bob Wyckoff May, 1985
View facing south
B-13



Kidd, Knox Building 228-236 Broad St.
Nevada City, CA Downtown Hist. Dist.
Photo & Neg. Bob Wyckoff May, 1985
View facing northeast
B-14

THE INDEPENDENT



STATE BOARD
of
EQUILIZATION

DOSPICK'S
FURNITURE

NOVAKS
FURNITURE



300 Block of Broad St.
(left to right) Union Building;
Prospector's Furniture; Novak's
Nevada City, CA Downtown Hist. Dist.
Photo & Neg. Bob Wyckoff May, 1985
View facing southwest
B-15; B-17; B-19



THE
Button
Works
1896

THE
BUTTON
WORKS
1896

The Button Works
Nevada City, CA
Photo & Neg.,
View facing north
B-16

300 Broad St.
Downtown Hist. Dist.
Bob Wyckoff May, 1985



300 Block of Broad St.
(left to right) Apple Faire; Cirino's; Cafe
Les-Stace; Antique Emporium; McGee's
Nevada City, CA Downtown Hist. Dist.
Photo & Neg. Bob Wyckoff May, 1985
View facing southwest
B-21; B-23; B-25; B-27; B-29



HARTUNG BUILDING SUPPLY

HONEY TREAT
YOGURT
& ICE CREAM

300 Block of Broad St.
(left to right) The Fudgery and Broadway
Beauty Shop; Honey Treat Yogurt Shop
Nevada City, CA Downtown Hist. Dist.
Photo & Neg. Bob Wyckoff May, 1985
View facing northwest
B-20; B-18



300 Block of Broad St.
(left to right) Sierra Hats and Caps;
Merrill's Real Estate; Utopian Stone;
The Fudgery
Nevada City, CA Downtown Hist. Dist.
Photo & Neg. Bob Wyckoff May, 1985
B-26; B-24; B-22; B-20
View facing northwest



300 Block of Broad St.

(left to right) Selaya's; Posh Nosh; The
Third Whale

Nevada City, CA Downtown Hist. Dist.

Photo & Neg. Bob Wyckoff May, 1985

View facing northwest

B-32; B-30; B-28



McGee's and City Hall

Nevada City, CA

Downtown Hist. Dist.

Photo & Neg.

Bob Wyckoff

May, 1985

View facing south

B-29; B-31



400 Broad St.

Nevada City, CA

Downtown Hist. Dist.

Photo & Neg.

Bob Wyckoff

May, 1985

View facing north

B-34



New York Hotel

Nevada City, CA

Downtown Hist. Dist.

Photo and Neg.

Bob Wyckoff

May, 1985

View facing northeast

B-36



The Fur Traders

CONVERSE MARKET

6-11-6

99
1.99
1.39

Fur Traders #1 and Bonanza

Nevada City, CA Downtown Hist. Dist.

Photo & Neg. Bob Wyckoff May, 1985

B-33; B-35

View facing southwest



NEWARK CITY ENGINEERING CO.

WATER
SUPPLY

NEWARK CITY ENGINEERING CO.

400 Block of Broad St.

(left to right) Antiques/^American Art;
Nevada City Engineering Co.; Darlene Crowley
Nevada City, CA Downtown Hist. Dist.
Photo & Neg. Bob Wyckoff May, 1985

View facing northwest

B-40; B-39; B-38



EST. 1865

NEVA A

Historical marker text, partially illegible.

Nevada Theater

Nevada City, CA

Downtown Hist. Dist.

Photo & Neg.

Bob Wyckoff

May, 1985

View facing south

B-37



Pennsylvania Fire House No. 2
Nevada City, CA Downtown Hist. Dist.
Photo & Neg. Bob Wyckoff May, 1985
View facing northeast
B-41



SOLID
WOOD
FURNITURE

COUNTRY CABINETS
FINE FURNITURE

OAK
FURNITURE

OLD POST OFFICE

OTHER

CRAFT
SHOPS
ENTRANCE

Old Post Office Craft Shop 200 Commercial St.
Nevada City, CA Downtown Hist. Dist.
Photo & Neg. Bob Wyckoff May. 1985
View facing northeast
C-42



Bank of America
Nevada City, CA
Photo & Neg.
View facing west
C-43

210 Commercial St.
Downtown Hist. Dist.
Bob Wyckoff May, 1985



Love Your Feet 228 Commercial St.
Nevada City, CA Downtown Hist. Dist.
Photo & Neg. Bob Wyckoff May. 1985
View facing north
C-44



1864

CHIEF CRAZY HORSE INN

CHIEF
CRAZY
HORSE
INN

Chief Crazy Horse

Nevada City, CA

Downtown Hist. Dist.

Photo & Neg.

Bob Wyckoff

May, 1985

View facing north

C-45



ASTANVIL'S
RESTAURANT

2 HOUR
PARKING
9 AM - 6 PM

LIVE ENTERTAINMENT
RESTAURANT

RESTAURANT
MEXITAL
RESTAURANT

Decorative architectural elements on the cornice of the brick building on the right.

200 Block of Commercial St.

(left to right) Framlstayl's Bar and
Restaurant; Commercial St. side of
Masonic Hall

Nevada City, CA Downtown Hist. Dist.

Photo & Neg. Bob Wyckoff May, 1985

View facing southwest toward Pine St.

C-46; P-78

25 of 62

The
LAW OFFICE
OF
DREHMANN & VAN NOTE

Gray  Goose
LAW OFFICES

224

225



Gray Goose and Sitting Bull Leather
Nevada City, CA Downtown Hist. Dist.
Photo & Neg. Bob Wyckoff May, 1985
View facing northeast
C-48; C-47



BOEN WOODS

BOOKS CALLE

THE OLD STORE

THE OLD STORE

THE OLD STORE

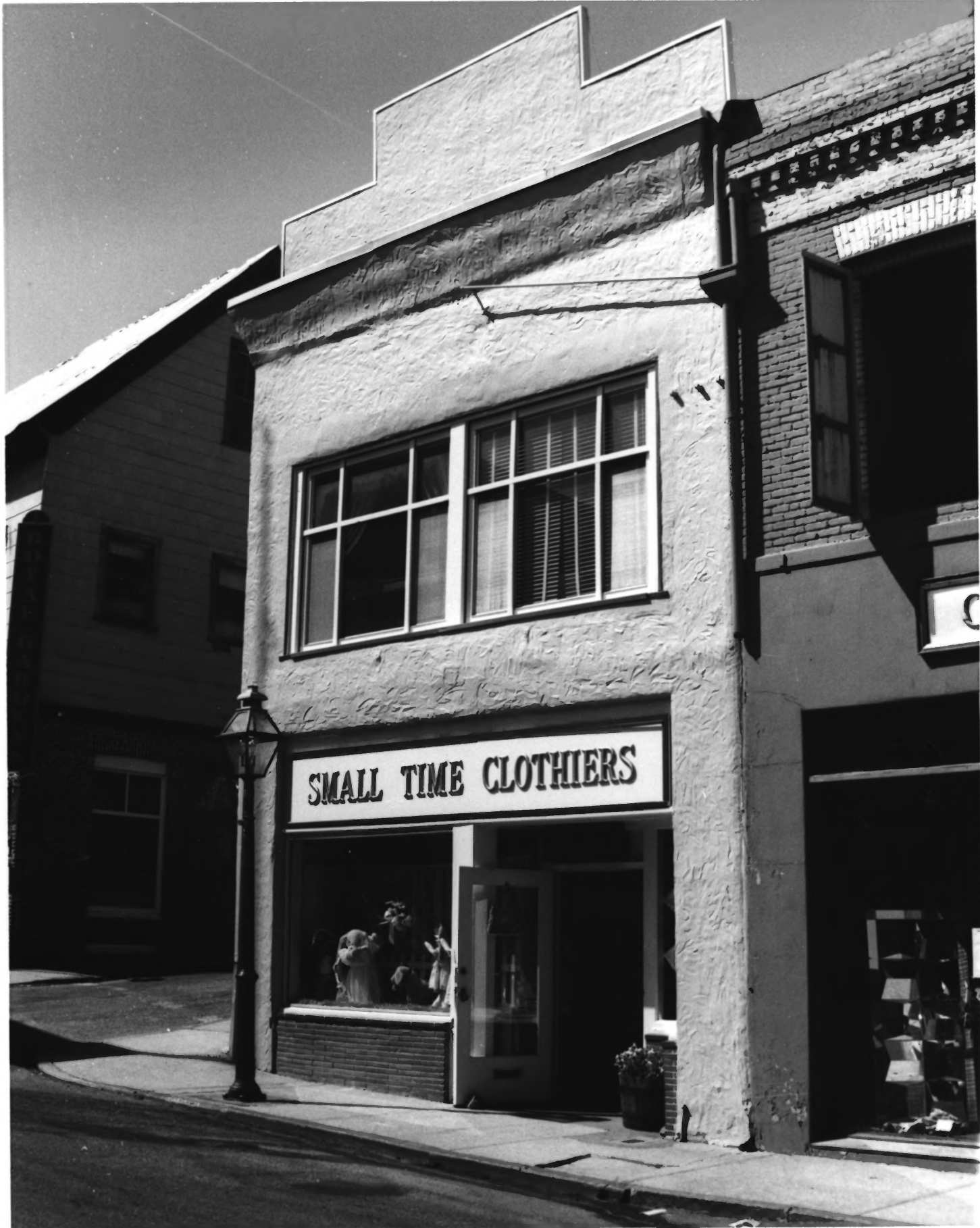
200 Block of Commercial St.
(left to right) Osborn & Woods; Transcript
Bldg.; Gray Goose; WestAmerica Bank;
South Yuba Canal Bldg.

Nevada City, CA Downtown Hist. Dist.

View facing northeast

C-50; C-49; C-48; M-60; M-61

Photo & Neg. Bob Wyckoff May, 1985



SMALL TIME CLOTHIERS

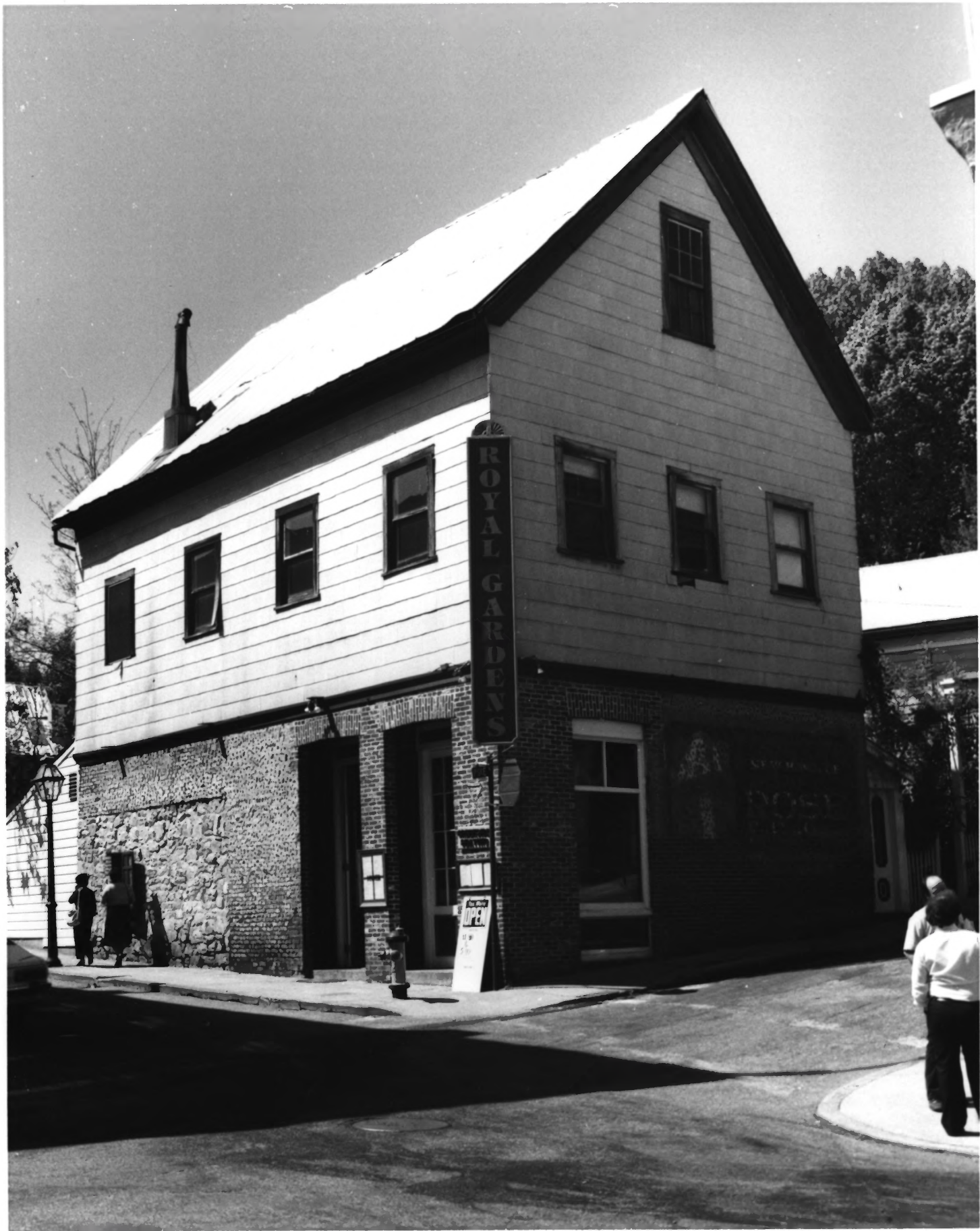
246 Commercial St.

Nevada City, CA Downtown Hist. Dist.

Photo & Neg. Bob Wyckoff May, 1985

View facing north

C-51



Royal Gardens

Nevada City, CA Downtown Hist. Dist.

Photo & Neg. Bob Wyckoff May, 1985

View facing northwest

C-52



300 Block of Commercial St.
(left to right) vacant buildings at 309,
311, 313, and 315 Commercial St.
Nevada City, CA Downtown Hist. Dist.
Photo & Neg. Bob Wyckoff May, 1985
C-53; C-54; C-55; C-57
View facing southwest

CRYSTAL RAINBOW
ROCK SHOP

OPEN WEEKENDS



Crystal Rainbow Rock Shop

Nevada City, CA Downtown Hist. Dist.

Photo & Neg. Bob Wyckoff May. 1985

View facing north

X-95



Sierra Mountain Coffees; The Gallery
Nevada City. CA Downtown Hist. Dist.
Photo & Neg. Bob Wyckoff May, 1985
View facing northeast
C-58; C-56



The Burrito Factory

Nevada City, CA Downtown Hist. Dist.

Photo & Neg. Bob Wyckoff May, 1985

View facing southwest

C-59



Jill's Hair Garage

Nevada City, CA Downtown Hist. Dist.

Photo & Neg. Bob Wyckoff May, 1985

View facing south

X-96

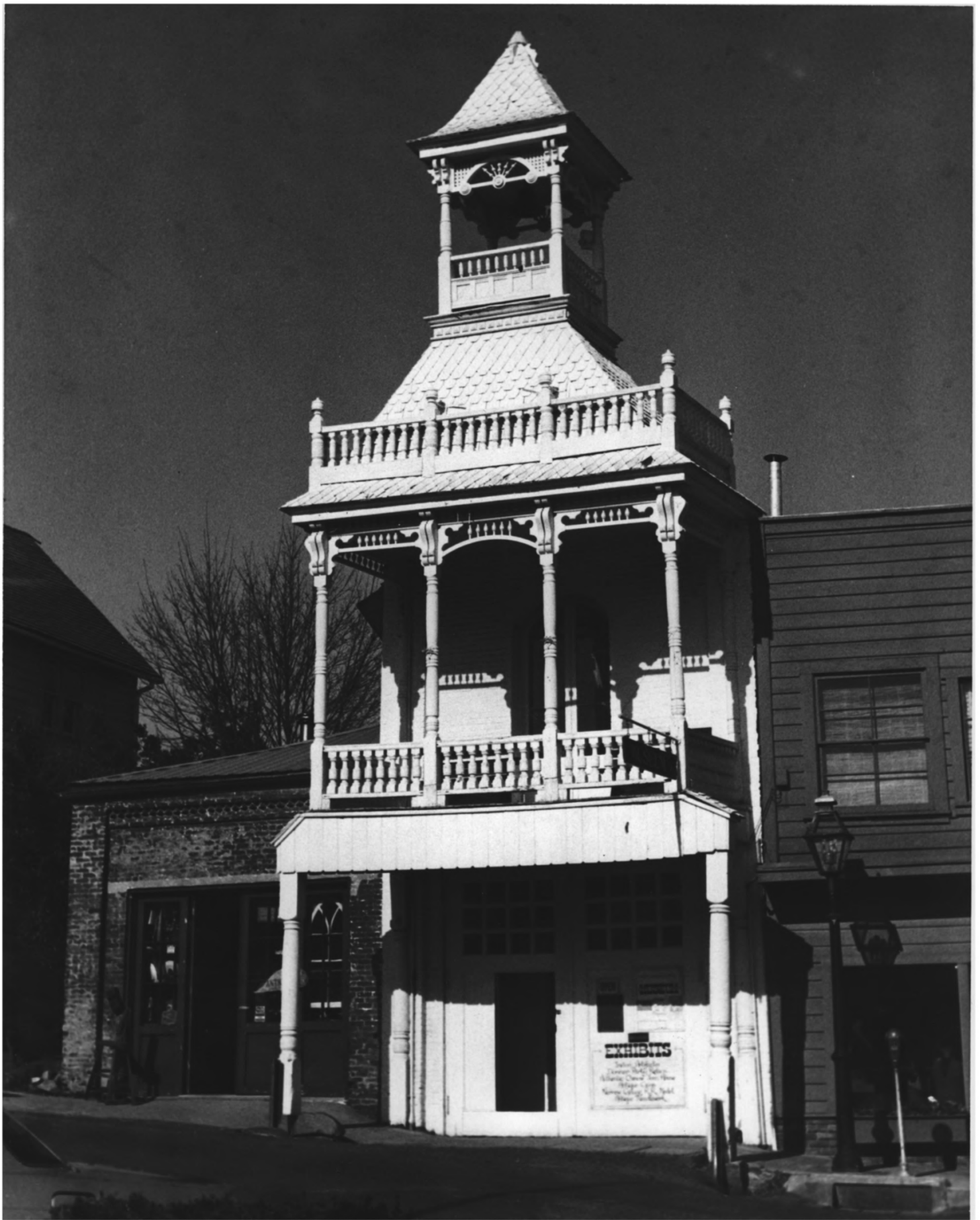


South Yuba Canal Bldg.; Ott's Assay Office
Nevada City, CA Downtown Hist. Dist.
Photo & Neg. Bob Wyckoff May, 1985
View facing east
M-61; M-60

#35 of 62



200 Block of Main St.
(left to right) Firehouse Museum; Knitting
Loom; Shaw's Antiques; WestAmerica Bank
Nevada City, CA Downtown Hist. Dist.
Photo & Neg. Bob Wyckoff May, 1985
View facing east
M-65; M-64; M-63; M-62



200^B Block of Main St.

(left to right) Antiques; Firehouse Museum; Knitting Loom

Nevada City, CA Downtown Hist. Dist.

Photo & Neg. Bob Wyckoff May, 1985

View facing east

M-66; M-65; M-64



200 Block of Main St.
(left to right) Mackay's Realty; Michael's
Restaurant; Antiques
Nevada City, CA ^Downtown Hist. Dist.
Photo & Neg. Bob Wyckoff May, 1985
View facing northeast
M-68; M-67; M-66



200 Block of Main St.
(left to right) Berliner's Office Bldg.;
Mackay's Realty
Nevada City, CA Downtown Hist. Dist.
Photo & Neg. Bob Wyckoff May, 1985
M-69; M-68
View from southeast.



230 Main St.
Nevada City, CA
Photo & Neg.
View facing east
M-70

Downtown Hist. Dist.
Bob Wyckoff May, 1985



First Baptist Church

Nevada City, CA Downtown Hist, Dist.

Photo & Neg. Bob Wyckoff May, 1985

View facing southeast

M-71



THE
WAGGONER
CENTER
professional offices

Carey D. Shover, Attorney at Law

SEBECO Computer Systems, Inc.

Spaulding
Cummings
Attorneys

RESERVED
PARKING
ONLY

Waggoner House

Nevada City, CA

Downtown Hist. Dist.

Photo & Neg.

Bob Wyckoff

May, 1985

View facing northeast

M-72



203 S. Pine St.
Nevada City, CA
Photo & Neg.
View facing east
P-73

Downtown Hist. Dist.
Bob Wyckoff May, 1985



100 Block of S. Pine St.
(left to right) Misty Mountain; Mama Sue's
Restaurant; Union Bldg.
Nevada City, CA Downtown Hist. Dist.
Photo & Neg. Bob Wyckoff May, 1985
P-74; P-76; B-15
View facing northwest



EXPRESS
MART

EXPRESS
VIDEO

ARCADE

PARKING ONLY

SSAN

Express Mart

Nevada City, CA

Downtown Hist. Dist.

Photo & Neg.

Bob Wyckoff

May, 1985

View facing east

P-75



Elks Club

Nevada City, CA

Photo & Neg.

View facing west

P-77

Downtown Hist. Dist.

Bob Wyckoff May, 1985



Masonic Hall; Kidd, Knox Bldg.
Nevada City, CA Downtown Hist. Dist.
Photo & Neg. Bob Wyckoff May, 1985
View facing southeast
P-78; B-14



John L. Larue Bldg.

Nevada City, CA

Downtown Hist. Dist.

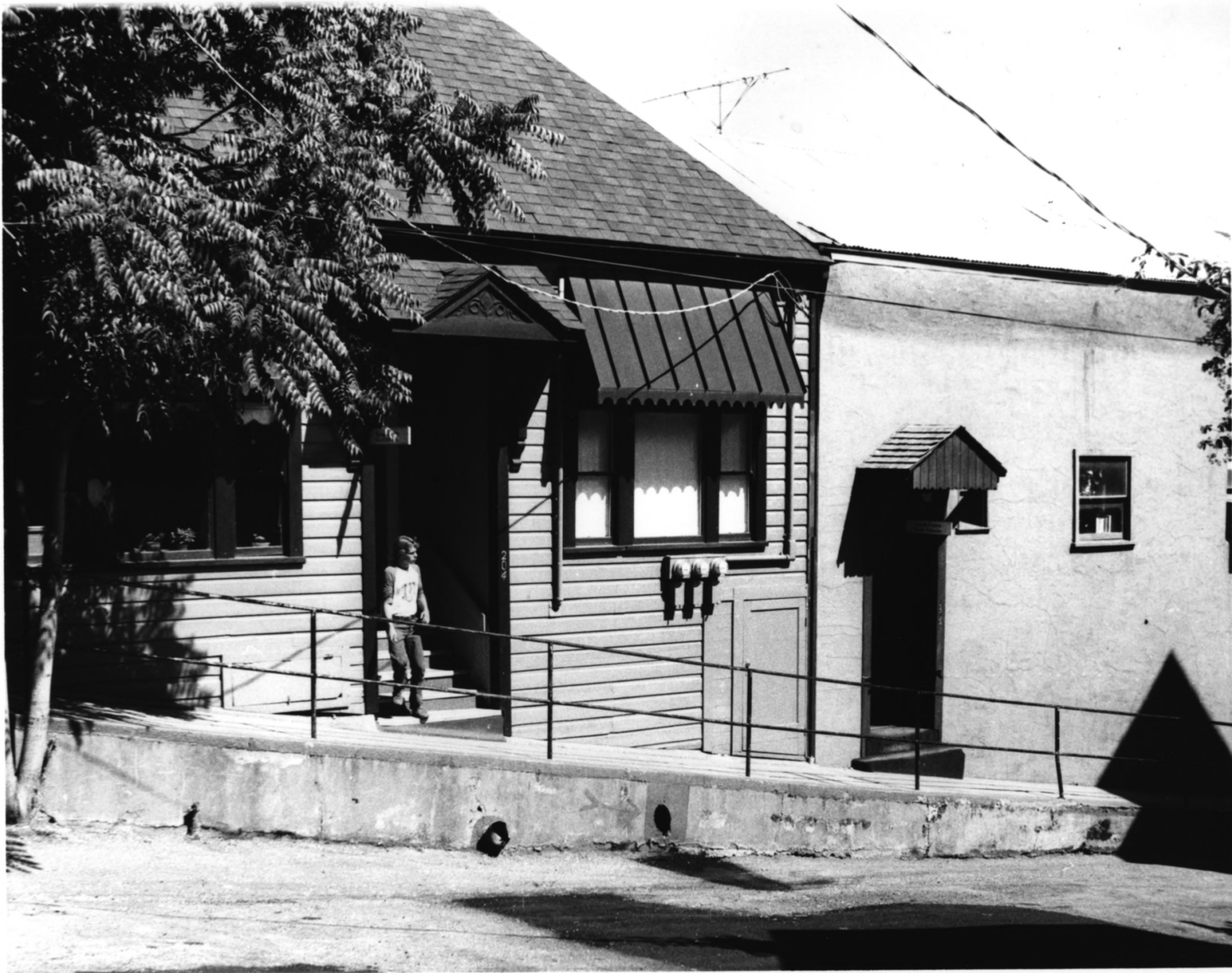
Photo & Neg.

Bob Wyckoff

May, 1985

View facing west

P-79



202-204 N. Pine St.

Nevada City, CA Downtown Hist. Dist.
Photo & Neg. Bob Wyckoff May, 1985

View facing east

P-80

PUBLIC LIBRARY

OPEN



Nevada City Public Library

Nevada City, CA Downtown Hist. Dist.

Photo & Neg. Bob Wyckoff May, 1985

View facing west

P-81



PROPERTY
SOLD
HERE

Clay's LAUNDRY

HARDWARE

EXTRA
WOOD

Clay's Laundry

Nevada City, CA

Downtown Hist. Dist.

Photo & Neg.

Bob Wyckoff

May, 1985

View facing northeast

S-82



300 Block of Spring St.
(left to right) Spring Street Cafe;
Heidelberger's Law Office
Nevada City, CA Downtown Hist. Dist.
Photo & Neg. Bob Wyckoff May, 1985
S-83; S-84
View facing southwest



320 Spring St.

Nevada City, CA

Downtown Hist. Dist.

Phot & Neg.

Bob Wyckoff

May, 1985

View facing north

S-85



FREDERICK
GARAGE

2



Nevada City Winery

Nevada City, CA Downtown Hist. Dist.

Photo & Neg. Bob Wyckoff May, 1985

View facing southwest

S-86

#54 of 62



American Victorian Museum

Nevada City, CA Downtown Hist. Dist.

Photo & Neg. Bob Wyckoff May, 1985

View facing southwest

S-87



OPEN
10:00 A.M. - 5:00 P.M.
MON. - THUR. 10

WALKER DISTRICT
LIBRARY
1000 W. 10TH ST.
WALKER, N.D.

WALKER DISTRICT
LIBRARY
1000 W. 10TH ST.
WALKER, N.D.

Searls Historical Library

Nevada City, CA Downtown Hist. Dist.

Photo & Neg. Bob Wyckoff May, 1985

View facing southeast

Ch-88



Nevada County Courthouse

Nevada City, CA Downtown Hist. Dist.

Photo & Neg. Bob Wyckoff May, 1985

View facing northwest

Ch-89



Beeson-Weatherall Offices

Nevada City, CA Downtown Hist. Dist.

Photo & Neg. Bob Wyckoff May, 1985

View facing southeast

Ch-92; Ch-90



Nevada County Courthouse Annex

Nevada City, CA Downtown Hist. Dist.

Photo & Neg. Bob Wyckoff May, 1985

View facing northwest

Ch-91



INTER-COUNTY
TITLE

CHURCH

NO PARKING
ANY TIME

Inter-County Title Co.

Nevada City, CA Downtown Hist. Dist.

Photo & Neg. Bob Wyckoff May, 1985

View facing southwest

Ch-93



St. Canice's Catholic Church
Nevada City, CA Downtown Hist. Dist.
Photo & Neg. Bob Wyckoff May, 1985
View facing southwest
W-94



Rear view of Hatfield Offices
Nevada City, CA Downtown Hist. Dist.
Photo & Neg. Bob Wyckoff May, 1985
View facing northwest from Coyote St.
M-70 (rear view)