



Broom's Bloom HA-1075

Hartford Co., MD

C. Weeks

9/91

Hartford Co. Planning Dept., Bel Air

View from house to SW

11/23



Broom's Bloom HA 10.75

Hartford Co, MD

C. weeds

a/a

Hartford Co. Planning Dept. Del. Air

House Fr. SW

2/23



Broom's Bloom HA-1075

Hartford Co. MD

C. Weeks

a/a

Hartford Co. Planning Dept, Bel air

Home fr. E

3/23



Brown's Bloom HA-1075

Hartford Co., MD

C. Weets

9/91

Hartford Co. Planning Dept Bel air

Done for N

4/23



Broom's Bloom HA-1075

Harford Co., MD

C. Weeks

9/91

Harford Co. Planning Dept. 1000 201

House fr. S.

5/23



Broom's Blossom HA-1075

Hartford Co., MD

C. Weeks 9/91

Hartford Co. Planning Dept., Bel Air

Detail c. 1747 section fr. S.

6/23



Broom's Bloom HA 1075

Hartford Co., MD

C. Weeks 9/91

Hartford Co. Planning Dept. Bel Air

Detail c. 1845 addition fr. S

7/23



Broom's Bloom HA-1075

Harford Co., MD

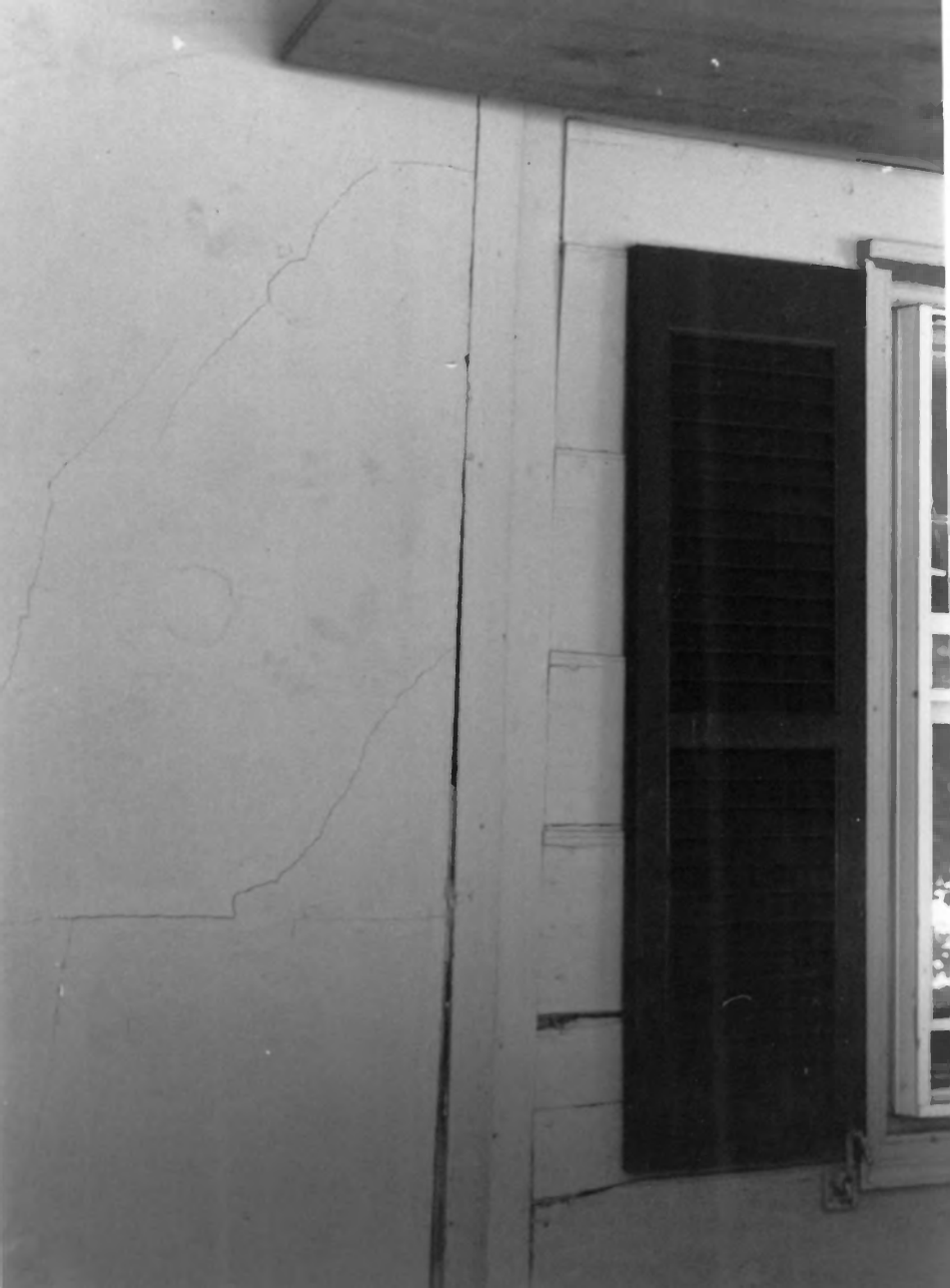
C. Weeks 9/91

Harford Co. Planner, Rest. Bel Air

Detail 1845 section fr. W

Shingles over clapboard

8/23



Broom, Blum HA-1075

Hartford Co, MD

C. Weeks 9/91

Hartford Co. Planning, Dent. Bel Air

Detail - c. 1745 & 1845 junction

9/23



Broom's Bloom NA-1075

Hanford Co, MD

C. weeks 9/91

Hanford Co. Planning Dept. Bel air

Parlor mantel (copy)

10/23



Broom, Bloom HA-1075

Hartford Co., MD

Hartford Co. Planning Dept. Bel Air

C-Weeks 9/91

Door from hall (c.1747) to c.1850 addition

11/23



Broom's Blum HA-1075

Hartford Co., MD

C. Weeks 9/91

Hartford Co. Planning Dept. Bel air

Hall mantel

12/23



Broom, Bloom HA-1075

Harford Co., MD

C. Weeks 9/91

Harford Co. Planning Dept. Rel air

Hall: mantel, orig. exterior chimes, stain

13/23



Bloom, Bloom HA 1075

Hartford Co, MD

C. Woods, 9/91

Hartford Co. Planning next Bel Air

Hall - market detail

14/23



Broom's Bloom HA - 1075

Hartford Co, MD

C. week, 9/91

Hartford Co. Planning Rept.

Hall - original (1747) stucco + later
weatherboarding

15/23



Broom's Bloom HA 1075

Hartford Co., MD

C. Weeks 9/91

Hartford Co. Planning Dept., Bel air

Detail: 1747 wall to L; c. 1845
addition to R

(from stairway)

16/23



Brown's Bloom MA-1075

Hartford Co, MD

C. Weeks 9/91

Hartford Co. Planning Dept, Bel Air

Stair fr. 2^d story

17/23



Broom's Bloom HA-1075

Hartford Co., MD

C. week, 9/91

Hartford Co. Planning, Reg. Bel air

Detail: 1747 corner post; 1845 addition

18/23



Broom's Bloom HIA-1075

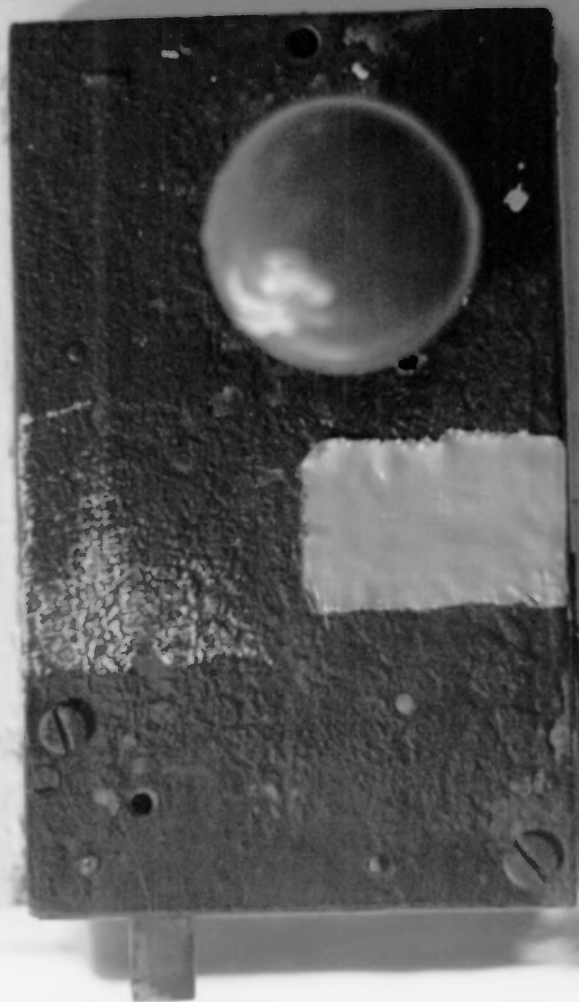
Harford Co., MD

C Weeks, 9/91

Harford Co. Planning Dept. Bel air

2nd story window detail

19/23



Broom, Bloom MA 1075

Hartford Co. MD

C. Weck, 9/91

Hartford Co. Planning Dept Bel Air

Lock M 1747 section

20/23



Brown's Blount HA 1075

Hartford Co., MD

C. Weeks 9/91

Hartford Co. Planning Dist. Bel Air

Chair rail 1741 section

21-23



Broom's Bloom HA-1075

Hartford Co, MD

C. Weeks 9/9~~8~~

Hartford Co. Planning Dept., Bel Air

Springhouse

29/23



ANN ANDERSON WEBSTER

DIED

MAY 21 1855

IN THE 40TH YEAR