

United States Department of the Interior
National Park Service



NATIONAL REGISTER OF HISTORIC PLACES
REGISTRATION FORM

NATIONAL
REGISTER

1. Name of Property

historic name: Missouri-Pacific Railroad Depot

other name/site number: DE0058

2. Location

street & number: Railroad Street

not for publication: N/A

city/town: McGehee

vicinity: N/A

state: AR county: Desha code: AR 041 zip code: 71654

3. Classification

Ownership of Property: Private

Category of Property: Building

Number of Resources within Property:

Contributing	Noncontributing	
<u>1</u>	<u> </u>	buildings
<u> </u>	<u> </u>	sites
<u> </u>	<u> </u>	structures
<u> </u>	<u> </u>	objects
<u>1</u>	<u>0</u>	Total

Number of contributing resources previously listed in the National Register: N/A

Name of related multiple property listing: Historic Railroad Depots of Arkansas, 1870-1940

=====

4. State/Federal Agency Certification

=====

As the designated authority under the National Historic Preservation Act of 1986, as amended, I hereby certify that this X nomination _____ request for determination of eligibility meets the documentation standards for registering properties in the National Register of Historic Places and meets the procedural and professional requirements set forth in 36 CFR Part 60. In my opinion, the property X meets _____ does not meet the National Register Criteria. _____ See continuation sheet.

Cathryn R. Byrd
Signature of certifying official

4-27-92
Date

Arkansas Historic Preservation Program
State or Federal agency and bureau

In my opinion, the property _____ meets _____ does not meet the National Register criteria. _____ See continuation sheet.

Signature of commenting or other official

Date

State or Federal agency and bureau

=====

5. National Park Service Certification

=====

I, hereby certify that this property is:

- ☒ entered in the National Register
_____ See continuation sheet.
☐ determined eligible for the
National Register
_____ See continuation sheet.
☐ determined not eligible for the
National Register
☐ removed from the National Register
_____ other (explain): _____

entered in the
National Register

Adrian Byrd 6/11/92

Signature of Keeper

Date
of Action

=====

6. Function or Use

=====

Historic: TRANSPORTATION

Sub: Rail-related

Current: VACANT/NOT IN USE

Sub: N/A

=====

7. Description

=====

Architectural Classification:

LATE 19TH AND 20TH CENTURY REVIVALS
CRAFTSMAN

Other Description: Mediterranean

Materials: foundation CONCRETE roof CERAMIC TILE
walls BRICK other Wood brackets

Describe present and historic physical appearance. X See continuation sheet.

=====

8. Statement of Significance

=====

Certifying official has considered the significance of this property in relation to other properties: Locally.

Applicable National Register Criteria: A, C

Criteria Considerations (Exceptions): N/A

Areas of Significance: TRANSPORTATION
ARCHITECTURE

Period(s) of Significance: 1910-1940 _____

Significant Dates: 1910 _____

Significant Person(s): N/A

Cultural Affiliation: N/A _____

Architect/Builder: Missouri-Pacific Railroad

State significance of property, and justify criteria, criteria considerations, and areas and periods of significance noted above.
X See continuation sheet.

**United States Department of the Interior
National Park Service**

**National Register of Historic Places
Continuation Sheet**

Section number 7 Page 1

Summary

The Missouri-Pacific Railroad Depot in McGehee is a single-story, brick masonry freight and passenger railroad depot designed in the Mediterranean/Craftsman transitional style that was growing in popularity among the railroad lines that traversed Arkansas during the early twentieth century, but especially for the Missouri-Pacific Railroad. Its plan is cruciform, with the telegrapher's bay projecting from its northeastern elevation balanced by a projecting bay opposite. An open porch is located at its southeastern end, beneath the hipped roof. Its hipped, red clay tile roof and brick walls are supported upon a continuous, cast concrete foundation.

Elaboration

The Missouri-Pacific Railroad Depot in McGehee is a single-story, brick masonry freight and passenger railroad depot designed in the Mediterranean/Craftsman transitional style that was growing in popularity among the railroad lines that traversed Arkansas during the early twentieth century, but especially for the Missouri-Pacific Railroad. Its plan is cruciform, with the telegrapher's bay projecting from its northeastern elevation balanced by a projecting bay opposite. An open porch is located at its eastern end, beneath the hipped roof. A single brick chimney, with its shoulders and cap coped in concrete, rises through the northwestern slope of the northwestern hipped roof. Its hipped, red clay tile roof and brick walls are supported upon a continuous, cast concrete foundation.

The northeastern or front elevation is composed of four principal wall bays and the open porch at the southeastern end. The wall bay to the west is blank except for a single rolling freight door, surmounted by a five-pane transom. The wall bay next toward the east is lighted by a single one-over-one wood sash window with a single-pane, horizontal transom, followed by a single-leaf entry with a transom, and three more windows of sash configuration identical to the one seen earlier. The central, projecting wall bay is lighted with three symmetrically-placed one-over-one wood sash windows. The final wall bay toward the east is lighted with two more one-over-one wood sash windows, each with a transom. The open porch roof to the southeast is supported upon two single, square wood posts set upon brick piers attached to the southeastern wall and two "L"-shaped brick piers coped with concrete -- one at each exterior corner -- each of which carries three square wood posts that rise to the roof plate. A later, hipped roof, single-story compatible addition is attached to the southeastern elevation.

The southwestern elevation opposite is also composed of four principal wall bays, with the open

**United States Department of the Interior
National Park Service**

**National Register of Historic Places
Continuation Sheet**

Section number 7 Page 2

porch at the southeastern end. The westernmost bay is punctuated only by a single rolling door. The wall bay toward the east is lighted by a single one-over-one wood sash window with a single-pane, horizontal transom, followed by two single-leaf entrances. The telegrapher's bay is lighted by two single one-over-one wood sash windows with transoms on its front face, while each of the side faces are lighted with single one-over-one wood sash windows. The parapeted, stepped wall dormer above is lighted by a single, central vent opening. The wall bay toward the east is lighted by two one-over-one wood sash windows with transoms flanking a single-leaf door with a transom.

The southeastern elevation is composed of the hipped porch roof and the wall of the enclosed portion of the structure recessed beneath. The wall is lighted with two single one-over-one wood sash windows flanking a central single-leaf entry, all of which are surmounted by horizontal, single-pane transoms. The northwestern elevation opposite is lighted by a pair of small, one-over-one wood sash windows, placed symmetrically in the elevation.

Significant exterior details include the large, Italianate brackets that adorn both the spreading cornice throughout the building and the wooden porch supports at the southeastern end; the concrete lintels and sills at most of the window and door openings; and the large, stepped, parapeted Spanish roof dormer above the telegrapher's bay on the northeastern elevation.

The Missouri-Pacific Depot in McGehee is currently unoccupied; however, its physical deterioration has been stabilized through the use of plywood panels over damaged doors and windows, and therefore it remains in good condition.

United States Department of the Interior
National Park Service

National Register of Historic Places Continuation Sheet

Section number 8 Page 1

Significance

Criteria A and C, local significance

McGehee, named for the family of Colonel Abner McGehee (a famous local "character" around the turn of the century), owes virtually its entire existence as a discernible community to the decision by the Missouri-Pacific Railroad to locate its regional railroad shops here in 1905. Even the physical plan of the downtown reflects this, as the entire original commercial district was laid out along the railroad tracks running north-south through the town. Though other industrial and manufacturing concerns established themselves in McGehee thereafter, the Missouri-Pacific Railroad continued to be the largest local employer through the 1930's.

The Missouri-Pacific Railroad Depot in McGehee was constructed c. 1910 as part of the Missouri-Pacific Railroad's ambitious campaign to expand their network of rail lines all over the country, and to establish the railroad's corporate identity through the exclusive use of the Italianate/Mediterranean style of architecture for its passenger and freight depots.

This passenger and freight railroad depot is associated with the Railroad Growth and Development in Arkansas, 1870-1940 historic context as a structure financed and erected under the auspices of one of the larger early twentieth-century railroads in the state. As such, it is eligible under Criterion A by virtue of those associations; however, with its Italianate cornice brackets, and formed-stone lintels, sills and watertable, the Missouri-Pacific Railroad Depot in McGehee is eligible not only under Criterion A, but also under Criterion C for its being such a good example of the Mediterranean/Craftsman transitional style.

=====

9. Major Bibliographical References

=====

See *Historic Railroad Depots of Arkansas, 1870-1940* Multiple Property Documentation Form, Section H.

___ See continuation sheet.

Previous documentation on file (NPS):

- _ preliminary determination of individual listing (36 CFR 67) has been requested.
- _ previously listed in the National Register
- _ previously determined eligible by the National Register
- _ designated a National Historic Landmark
- _ recorded by Historic American Buildings Survey # _____
- _ recorded by Historic American Engineering Record # _____

Primary Location of Additional Data:

- X State historic preservation office
- _ Other state agency
- _ Federal agency
- _ Local government
- _ University
- _ Other -- Specify Repository: _____

=====

10. Geographical Data

=====

Acreage of Property: Less than one

UTM References: Zone Easting Northing Zone Easting Northing

A	<u>15</u>	<u>648860</u>	<u>3721920</u>	B	___	___	___
C	___	___	___	D	___	___	___

___ See continuation sheet.

Verbal Boundary Description: ___ See continuation sheet.

Beginning at a point formed by the intersection of the eastern edge of Railroad Street with a perpendicular line running parallel with the depot's northern elevation and located approximately 50 feet to the north thereof, proceed easterly along said line for a distance of approximately 100 feet to its intersection with a perpendicular line running along the western edge of the Union Pacific Railroad tracks; thence proceed southerly along said line for a distance of 400 feet to its intersection with a perpendicular line running parallel with the depot's southern elevation; thence proceed westerly along said line for a distance of approximately 100 feet to its intersection with a perpendicular line running along the eastern edge of Railroad Street; thence proceed northerly along said line for a distance of approximately 400 feet to the point of beginning.

Boundary Justification: ___ See continuation sheet.

This boundary includes all the property historically-associated with this resource that retains its integrity.

=====

11. Form Prepared By

=====

Name/Title: Kenneth Story, National Register Coordinator

Organization: Arkansas Historic Preservation Program Date: April 17, 1992

Street & Number: 225 E. Markham, Suite 300 Telephone: (501) 324-9346

City or Town: Little Rock State: AR ZIP: 72201



IN REPLY REFER TO:

United States Department of the Interior

NATIONAL PARK SERVICE

P.O. BOX 37127

WASHINGTON, D.C. 20013-7127



Historic Railroad Depots of Arkansas MPS ARKANSAS

Date Listed

COVER Substantive Review

6/11/92

92000612 Blytheville, Leachville and Arkansas Southern Rail
road Depot--Leachville

6/11/92

92000608 Cotton Belt Railroad Depot--Fordyce

6/11/92

92000607 DeQueen and Eastern Railroad Depot--Dierks

6/11/92

92000617 Kansas City, Fort Scott and Memphis Railroad Depot

6/11/92

92000606 Kansas City--Southern Depot--Decatur

6/11/92

92000614 Louisiana and Northwest Railroad Depot--Magnolia

6/11/92

92000601 Missouri and North Arkansas Depot--Bellefonte

6/11/92

92000613 Missouri and North Arkansas Depot--Leslie

6/11/92

92000597 Missouri--Pacific Depot--Altus

Ret.

92000600 Missouri--Pacific Depot--Atkins

6/11/92

92000604 Missouri--Pacific Depot--Clarksville

6/11/92

92000619 Missouri--Pacific Depot--Newport

6/11/92

92000598 Missouri--Pacific Depot--Ozark

6/11/92

92000620 Missouri--Pacific Depot--Russellville

6/11/92

92000622 Missouri--Pacific Depot--Walnut Ridge

6/11/92

92000623 Missouri--Pacific Depot--Wynne

6/11/92

92000599 Missouri--Pacific Railroad Depot--Arkadelphia

6/11/92

92000602 Missouri--Pacific Railroad Depot--Benton

6/11/92

92000605 Missouri--Pacific Railroad Depot--Camden

6/11/92

92000609 Missouri--Pacific Railroad Depot--Gurdon

6/11/92

92000610 Missouri--Pacific Railroad Depot--Hope

6/11/92

92000611 Missouri--Pacific Railroad Depot--Hot Springs

6/11/92

92000615 Missouri--Pacific Railroad Depot--Malvern

6/11/92

92000616 Missouri--Pacific Railroad Depot--McGehee

6/11/92

92000618 Missouri--Pacific Railroad Depot--Nashville

6/11/92

92000621 Rock Island Depot--Weldon

6/11/92

92000603 Rock Island Railroad Depot--Booneville

6/11/92

94000192 Memphis, Paris and Gulf Railroad Depot

3/17/94

UNITED STATES DEPARTMENT OF THE INTERIOR
NATIONAL PARK SERVICE

NATIONAL REGISTER OF HISTORIC PLACES
EVALUATION/RETURN SHEET

REQUESTED ACTION: NOMINATION

PROPERTY NAME: Missouri--Pacific Railroad Depot--McGehee

MULTIPLE NAME: Historic Railroad Depots of Arkansas MPS

STATE & COUNTY: ARKANSAS, Desha

DATE RECEIVED: 4/30/92 DATE OF PENDING LIST: 5/15/92
DATE OF 16TH DAY: 5/30/92 DATE OF 45TH DAY: 6/14/92
DATE OF WEEKLY LIST:

REFERENCE NUMBER: 92000616

NOMINATOR: STATE

REASONS FOR REVIEW:

APPEAL: N DATA PROBLEM: N LANDSCAPE: N LESS THAN 50 YEARS: N
OTHER: N PDIL: N PERIOD: N PROGRAM UNAPPROVED: N
REQUEST: N SAMPLE: N SLR DRAFT: ☒ NATIONAL: N

COMMENT WAIVER: N

☒ ACCEPT ☐ RETURN ☐ REJECT 6/14/92 DATE

ABSTRACT/SUMMARY COMMENTS:

RECOM./CRITERIA
REVIEWER
DISCIPLINE
DATE

DOCUMENTATION see attached comments Y/N see attached SLR Y/N

CLASSIFICATION

____count ____resource type

STATE/FEDERAL AGENCY CERTIFICATION

FUNCTION

____historic ____current

DESCRIPTION

____architectural classification
____materials
____descriptive text

SIGNIFICANCE

Period Areas of Significance--Check and justify below

Specific dates Builder/Architect
Statement of Significance (in one paragraph)

____summary paragraph
____completeness
____clarity
____applicable criteria
____justification of areas checked
____relating significance to the resource
____context
____relationship of integrity to significance
____justification of exception
____other

BIBLIOGRAPHY

GEOGRAPHICAL DATA

____acreage ____verbal boundary description
____UTMs ____boundary justification

ACCOMPANYING DOCUMENTATION/PRESENTATION

____sketch maps ____USGS maps ____photographs ____presentation

OTHER COMMENTS

Questions concerning this nomination may be directed to

Phone

Signed

Date



MISSOURI-PACIFIC RAILROAD DEPOT (DE ØØ58)

MCGEE, DESHA CO., ARKANSAS

BARBARA LINDSEY-ALLEN

OCTOBER, 1990

NEGATIVE ON FILE AT AHPP

VIEW FROM NORTH



MISSOURI-PACIFIC RAILROAD DEPOT (DE ØØ58)

MCGEE, DESHA CO., ARKANSAS

BARBARA LINDSEY-ALLEN

OCTOBER, 1990

NEGATIVE ON FILE AT AHPP

VIEW FROM WEST



MISSOURI-PACIFIC RAILROAD DEPOT (DE0058)

McGENEE, DESHA CO., ARKANSAS

BARBARA LINDSEY-ALLEN

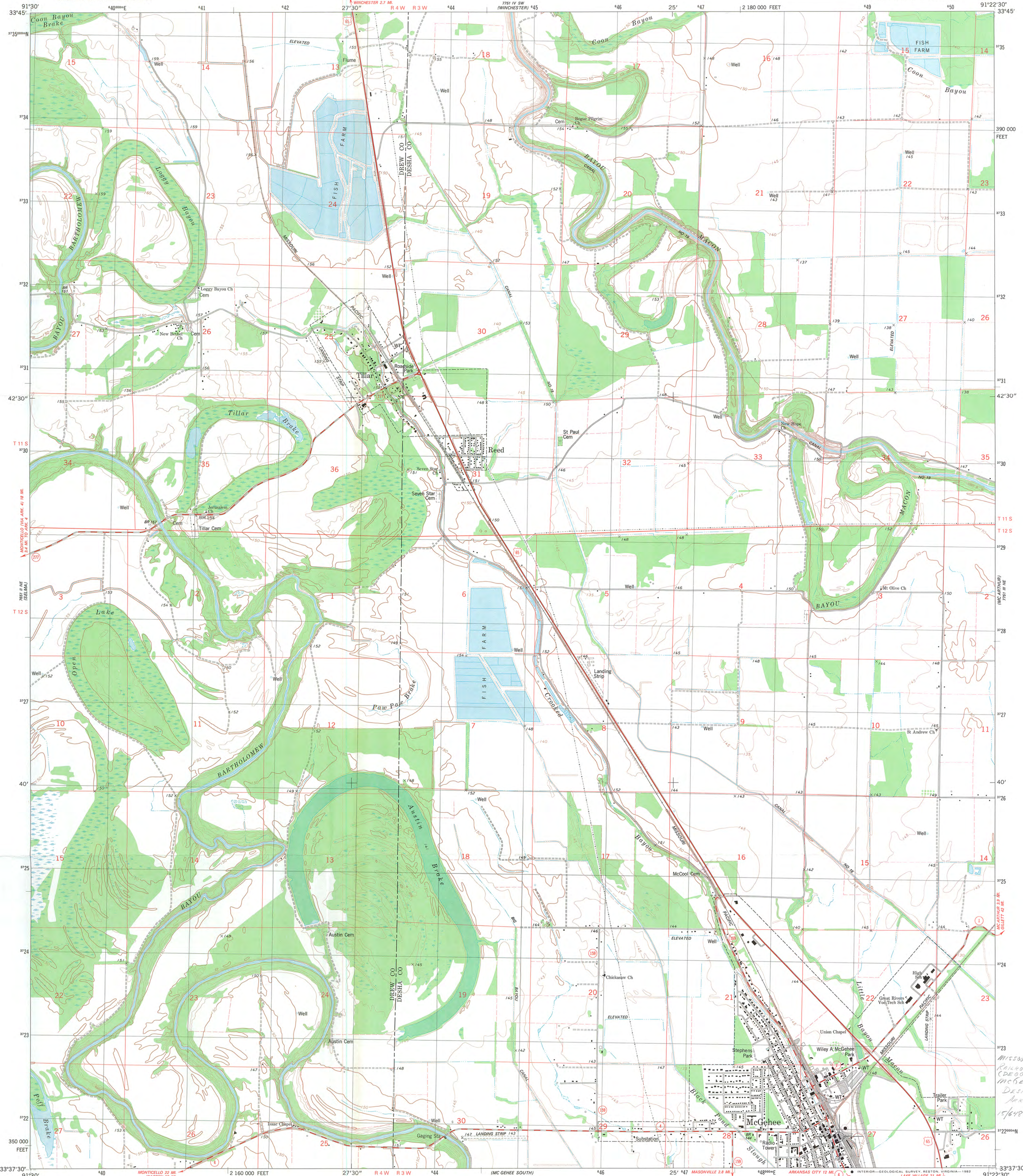
OCTOBER, 1990

NEGATIVE ON FILE AT AHPP

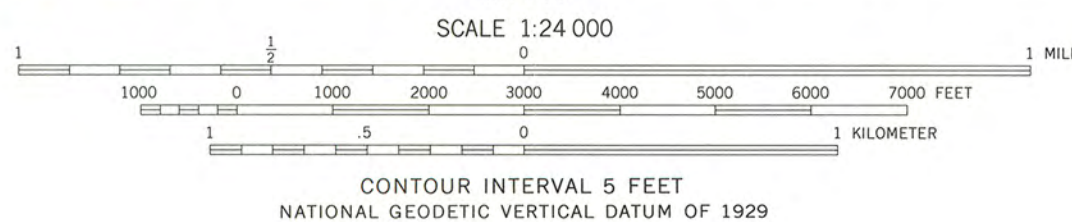
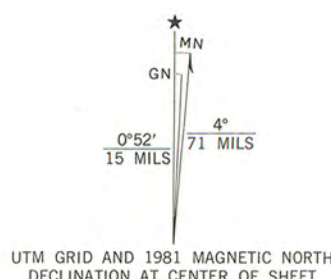
VIEW FROM SOUTHWEST

UNITED STATES
DEPARTMENT OF THE INTERIOR
GEOLOGICAL SURVEY

MC GEHEE NORTH QUADRANGLE
ARKANSAS
7.5 MINUTE SERIES (TOPOGRAPHIC)
NW/4 MC GEHEE 15' QUADRANGLE



Maped, edited, and published by the Geological Survey
Control by USGS, NOS/NOAA, and USCE
Topography by photogrammetric methods from aerial photographs
taken 1975-76. Field checked 1978. Map edited 1981
Projection and 10,000-foot grid ticks: Arkansas coordinate
system, south zone (Lambert conformal conic)
1000-meter Universal Transverse Mercator grid, zone 15
1927 North American Datum
To place on the predicted North American Datum 1983
move the projection lines 10 meters south and
12 meters east as shown by dashed corner ticks
Fine red dashed lines indicate selected fence and field lines where
generally visible on aerial photographs. This information is unchecked



ROAD CLASSIFICATION
Primary highway, hard surface
Secondary highway, hard surface
Unimproved road
Light-duty road, hard or improved surface
Interstate Route
U. S. Route
State Route

MC GEHEE NORTH, ARK.
NW/4 MC GEHEE 15' QUADRANGLE
N3337.5-W9122.5/7.5

1981

DMA 7751 III NW-SERIES V884